

# WHEEL BOLTS AND WHEEL NUTS

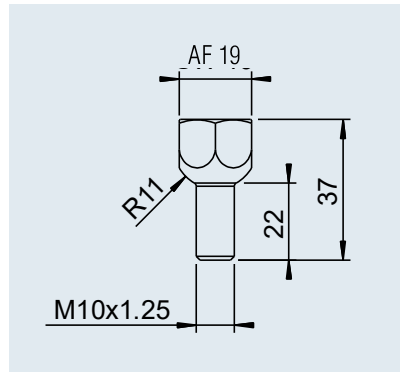
## TECHNOLOGY

**Wheel attachment:** Attachment for safe operation is largely dependent on matching the hubs and wheel connections as well as using the right fastening components with the prescribed tightening torque.

It is essential to coordinate the data of the axle, i.e. wheel connection and offset as well as the data of the wheel bolt, with your rim and tyre manufacturer.

## SURFACE TREATMENT

| Galvanised



### Ball-head wheel bolt M10 x 1.25

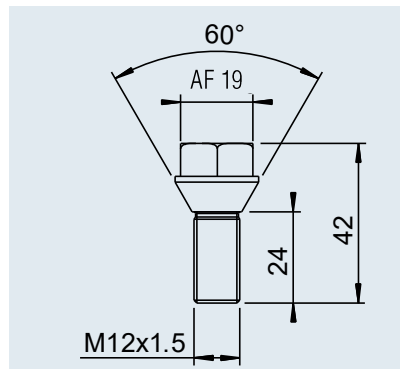
SAP: SHR RAD- KUG- M10X1,25X22

Part no. 208 892 00 10

Wrench size AF 19

Bolt quality 8.8

Maximum permitted tightening torque 52 Nm



### Taper-head wheel bolt M12 x 1.5

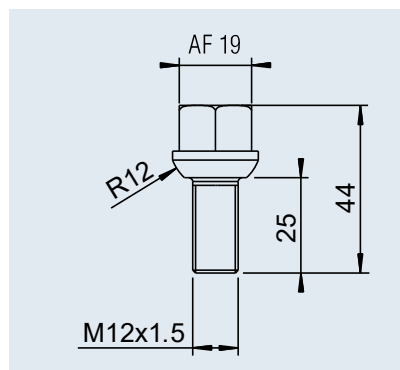
SAP: SHR RAD- KEG- M12X1,5X24

Part no. 208 167 00 18

Wrench size AF 19

Bolt quality 8.8

Maximum permitted tightening torque 90 Nm



### Ball-head wheel bolt M12 x 1.5

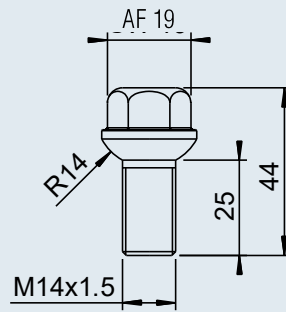
SAP: SHR RAD- KUG- M12X1,5X25

Part no. 208 167 00 20

Wrench size AF 19

Bolt quality 8.8

Maximum permitted tightening torque 90 Nm



#### Ball-head wheel bolt M14 x 1.5

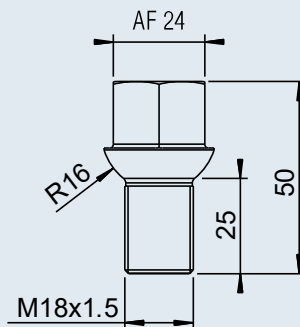
**SAP:** SHR RAD- KUG- M14X1,5X25 ZN12A

**Part no.** 208 167 00 02

**Wrench size** AF 19

**Bolt quality** 8.8

**Maximum permitted tightening torque** 150 Nm



#### Ball-head wheel bolt M18 x 1.5

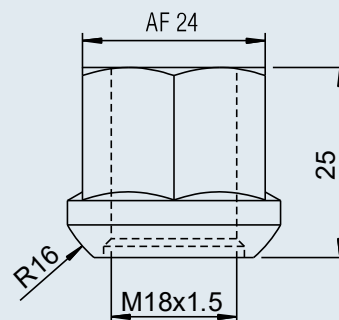
**SAP:** SHR RAD- KUG- M18X1,5X25

**Part no.** 218 568 00 06

**Wrench size** AF 24

**Bolt quality** 8.8

**Maximum permitted tightening torque** 325 Nm



#### Wheel nut M18 x 1.5

**SAP:** MU 74361-A18- 8 A3B (M18X1,5)

**Part no.** 701 202

**Wrench size** AF 24

**Bolt quality** 8.8

**Maximum permitted tightening torque** 325 Nm