



Mk5 Double Action Pump

MH5550 / MH5560 / MH5570

INSTALLATION & USER INSTRUCTIONS

Thank you for purchasing this Whale® product.

For over 40 years Whale® has led the way in the design and manufacture of freshwater and waste systems including:- plumbing, faucets, showers and pumps for low voltage applications. The company and its products have built a reputation for quality, reliability and innovation backed up by excellent customer service.

For information on our full product range visit: www.whalepumps.com

Please read carefully before installation and use.

To the Fitter:

Check that the product is suitable for the intended application. Follow these installation instructions and ensure all relevant personnel read the points listed below. Also ensure that these operating instructions are passed on to the end user. The manufacturer cannot be held responsible for claims arising from incorrect installation, unauthorised modification or misuse of the product.

To the User:

Read the points listed below before installation.

1. PRINCIPLES OF OPERATION

This pump is designed to manually remove standing water that is in the bilge of a boat.

2. APPLICATION

- This bilge pump is designed to exhaust standing water only.
- Output capacity depends on installation conditions and pumping rate. Users should be aware that the capacity may not be sufficient to cope with a rapid influx of water.
- If it is intended for use with any other liquid, it is the user's responsibility to ensure that the materials are fully compatible with the liquids to be used.
- A system of safe working practice should be applied to the installation, use and maintenance.

3. WARNINGS

Please note that the incorrect installation of this product may invalidate the warranty.

4. PARTS LIST

Whale® Mk 5 double action pump, handle, lanyard and installation instructions.

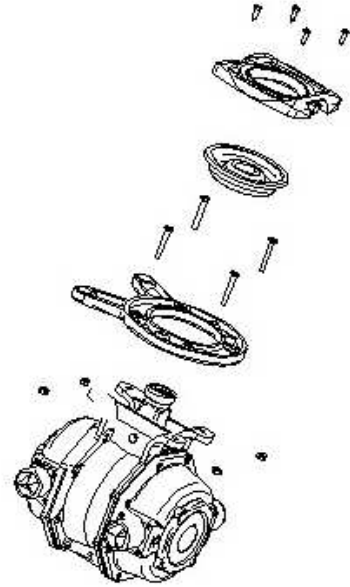
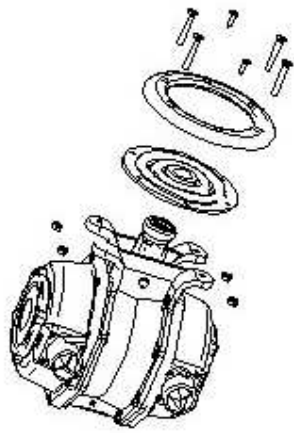
5. OPTIONAL EXTRAS

Skin Fitting for 38mm (1 1/2") Hose	SF5425
Top Entry Strainer	SB4222
Side Entry Strainer	SB5865
2 Way Diverter Valve for 38mm (1 1/2") hose	DV5606
90° Elbow	EB3488
Y Piece	YP6114
Non-Return Valve	LV1215

Extra Equipment available.

Underdeck (DP9905) & Through Bulkhead mounting kits (DP9906)

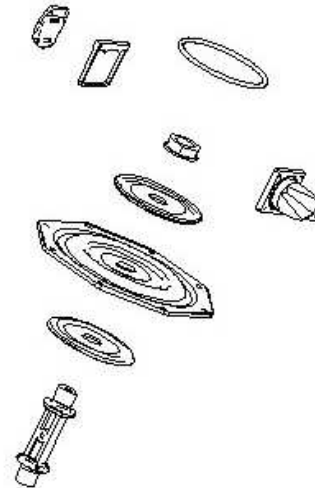
Follow the instructions enclosed with either of the deck plate kits



To change the diaphragms and valves (Service kit AK8060)

Follow the instructions enclosed with the Service kit.

Schematic shows one side only.



6. INSTALLATION

Before mounting the pump the following points should be considered.

Select a suitable position where the pump can be operated efficiently and comfortably, allowing unrestricted movement of the handle.

1. The 2 side top covers should be readily accessible in case of the pump choking.
2. The outlet valves can be replaced without removing the pump body.
3. The pump will work in any part of the boat, and the flow direction can be changed to increase the options available. **To change the flow direction**, remove the 16 screws holding on the covers, adjust and reassemble the pump as required. The valves should **not** be removed from the body during this operation.
4. The suction inlet should be in the deepest part of the bilge. The suction pipe should be arranged so that it will not suck against any flat surface. A Whale strainer is available for this purpose and will help to clear the last drop of water.
5. Check all fittings are of uniform bore, a restricted inlet makes pumping difficult and a restricted outlet can cause choking.
6. It is recommended that 38mm (1½") reinforced hose should be used for the installation.
7. It is recommended that the pump handle is stowed convenient to the pump.

Installing the Pump

1. Mark off and drill the 4 holes for the mounting bolts and mount the pump using 6mm (1/4") bolts.
2. Attach 38mm (1½") reinforced hose to the inlet and outlet ports, making sure that an airtight seal is made.
3. The outlet pipe should be terminated at a skin fitting, well above the water line, incorporating an anti-syphon loop. It is considered advisable that a sea cock is incorporated in the line to eliminate the risk of syphoning back.
4. Test the installation for air leaks, correct priming and discharge.

7. MAINTENANCE

A planned maintenance schedule of regular inspection is recommended. Rubber components are perishable and susceptible to damage. They should be inspected periodically and replaced as necessary. Spares kits are available from marine retailers.

During periodic shipboard inspections, the bilge pump **must be** visually inspected to confirm parts are in good condition, especially rubber parts and mounting arrangements. The pump should then be operated to show that it pumps water efficiently.

8. TROUBLE SHOOTING

If the pump fails to prime or chokes.

1. Check for air leaks or blockages in the inlet hose and its connections to the pump.
2. Remove the inspection covers and check for a torn diaphragm or dirt under the valves. Also check for distorted valves.
3. Check that the inlet hose is not collapsing under the suction of the pump or sucking against a flat surface.
4. The correct installation of the components supplied in this kit.
5. Check that the seacock is open, if fitted into the system

9. WINTERISING

If water is allowed to freeze in the system, serious damage to the pump and pipe work may occur. To avoid this damage, completely drain the water system during low temperatures.

10. SERVICE SUPPORT DETAILS

For installation or service advice please contact Whale® customer support:

Tel: +44 (0)28 9127 0531
Email: info@whalepumps.com
www.whalepumps.com

USA Tel: 1 616 897 9241
Email USA: usasales@whalepumps.com
www.whalepumps.com

11. STANDARDS APPLIED

Whale® manual bilge pumps are manufactured to International Standard EN ISO 15083. Lloyd's Register and US Coastguard approved.

12. PATENTS AND TRADEMARKS

WHALE®, is a registered trademark of Munster Simms Engineering Limited, Bangor, Northern Ireland trading as Whale.

13. WARRANTY

This Whale product is covered by 5 years warranty.

Please see the enclosed document for details of our statement of limited warranty.

©Copyright Whale 2016 - All rights reserved.

Whale's policy is one of continuous improvement and we reserve the right to change specifications without prior notice. Illustrations are for guidance purposes only.