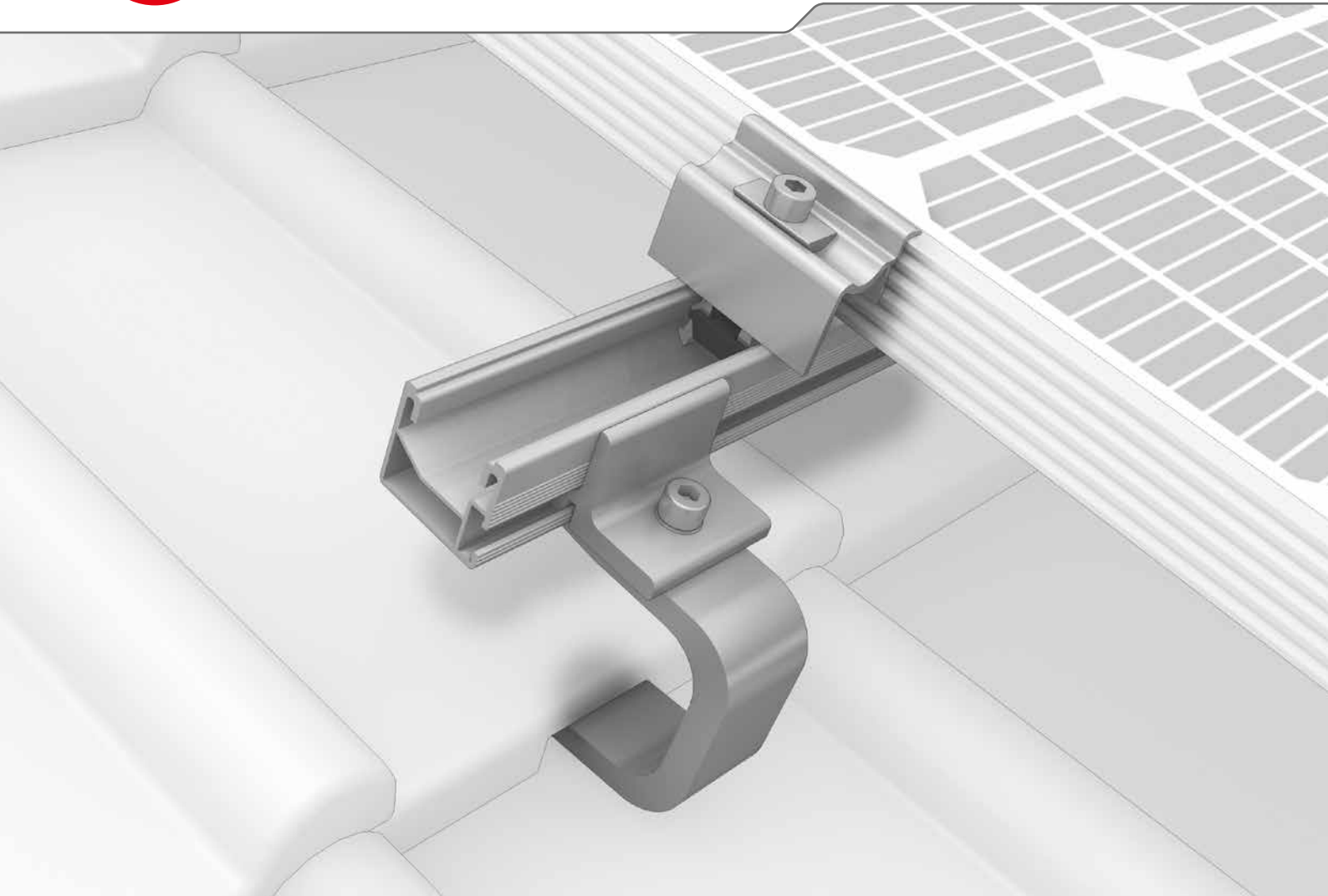
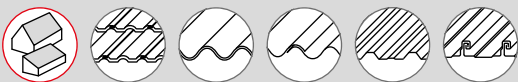




SingleRail System



- ▶ Quick and low-cost with direct lateral connections to the rail including customised height adjustment
- ▶ Secure snap-in assembly – without needing to be screwed into the base plate
- ▶ The SingleRail in combination with CrossHook roof hooks is very durable and versatile

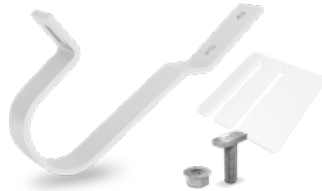


Roof fastenings



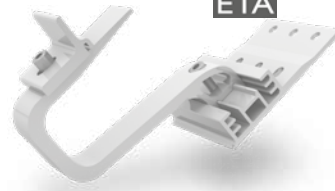
SingleHook 1.1

- ▶ For pantiles
- ▶ Easy height adjustment with slotted bore hole
- ▶ Also suitable for narrow rafters
- ▶ Connects directly to SingleRail



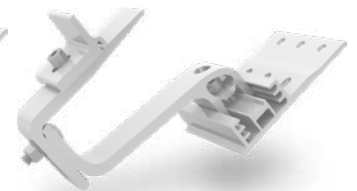
SingleHook FT

- ▶ For flat tiles and pantiles
- ▶ Applicable on small rafters and independent from rafters
- ▶ Connects directly to SingleRail



CrossHook 35

- ▶ For pantiles
- ▶ 3 height adjustments in the base plate
- ▶ Also suitable for narrow rafters



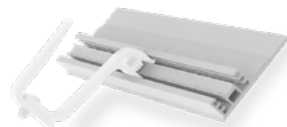
CrossHook 45

- ▶ For pantiles
- ▶ 3 height adjustments in the base plate
- ▶ Further height adjustment at the bracket itself.
- ▶ Also suitable for narrow rafters



SingleHook Vario

- ▶ For flat tiles and pantiles
- ▶ Height-adjustable at rail connection and battens
- ▶ Connects directly to SingleRail



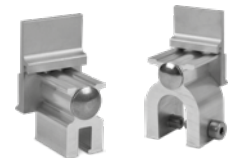
CrossBoard

- ▶ The easy solution for nogging, skylights etc.
- ▶ Complements CrossHook 35 and 45



Hanger bolts SR

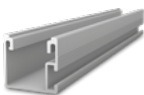
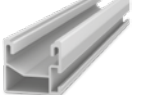
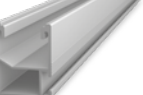
- ▶ For corrugated fibre cement roofing with wooden substructures
- ▶ With building approval

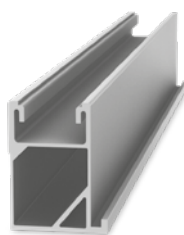
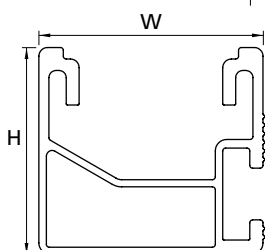


Standing seam clamps

- ▶ For many different seam types
- ▶ Direct lateral connection

Technical data

| SingleRail | Light 36 | 36 | 50 |
|-------------------|---|---|---|
| Figure |  |  |  |
| Material | Aluminium (EN AW-6063 T66) | | |
| W = width [mm] | 39.4 | 39.4 | 39 |
| H = height [mm] | 36 | 36 | 50 |
| Lengths [m] | 1.15/2.10/3.25/4.30/5.40 | 2.10/3.25/4.30/5.40 | 5.40 |
| Weight [kg/m] | 0.67 | 0.76 | 1.0 |
| Second rail layer | SingleRail or SolidRail | | |



SingleRail 63:
For heavy loads and large spans!