



BULAGGI

the Bag

AUTUMN-WINTER
2021-2022

{ PETA - APPROVED
VEGAN }



Timeless elegance with an extravagant touch

The BULAGGI 2021 winter collection includes two lines; Heritage and Passion. Familiar elements are mixed in such a way that they become freshly re-invented classics. One striking aspect is that we are not seeing any clearly defined colour palettes for this season – literally anything goes...

The disruptive events have also started a longing to feel comfortable. Traditional materials such as tweed, shearling, knitwear and velvet – materials that are not just classic but comfortable as well – play an important role this season. On the other hand we find sumptuous and feminine influences that are accentuated by soft pleats, patent and crocodile embossing.

After what has been an absolutely crazy year there has been an important shift towards sustainability and digitalization. BULAGGI has focused on what steps can be taken to further reduce their impact on the environment. Besides all bags being **100% Vegan** and carrying the PETA vegan certificate with great pride, you will find an expanded **eco-friendly collection** on pages 42-48. Now consisting of 5 groups, covering 16 models in 11 different colours.

'All BULAGGI bags are made from high-grade PU, vegan and certified by PETA. We have a keen eye for sustainability and our role in the fashion industry. All our bags feature a refined finish, so that women can use them over and over. Obviously our passion for colour, comfort and quality is key to each and every collection.'

Annemarieke Schouten-Walraven, owner and designer at BULAGGI.

04 - HERITAGE

17 - SPECIAL OFFER

20 - PASSION

35 - SPECIAL OFFER

42 - BULAGGI GOES GREEN



24

HELLO

AUTUMN

21/
22



11

49 - PARTY

52 - NOS

54 - POS

55 - INDEX

56 - CONTACT

HERITAGE

“where classics
meet the future”

Re-invented classics with a fresh twist. That's what this Autumn / Winter trend is all about. Obviously, the pandemic is affecting fashion and our attitude towards the fashion industry. The disruptive events of the past year have kindled a desire to feel comfortable. We long for stability and see this reflected in the upgrade of materials used in fashion collections.

We are seeing a huge shift towards traditional materials such as tweed, sheering, knitwear and velvet; materials that are not just classic, but comfortable as well. Tradition is distorted but strongly accentuated with classic prints such as pied de poule, checks and inspiration derived from refined tapestry. The colours are also timeless classics, such as cognac, dark blue, ochre and khaki. Colours that feel as if they have grown like stories or memories. They are never too flashy, but uplifting and harmonizing.



HERITAGE



MEGHAN



Meghan crossover - 31120



10 Black | 43 Dark blue | **65** Burnt orange

22x18x5 cm - 65 cm

Closes with topzip

Exterior: front pocket

Interior: 1 zip & 2 slit pockets



Meghan hobo - 31121



10 Black | **43** Dark blue | 65 Burnt orange

32x22x10 cm - 27 cm

Extra shoulderstrap

Closes with topzip

Exterior: back pocket

Interior: 1 zip & 2 slit pockets



Meghan shopper - 31122



10 Black | 43 Dark blue | 65 Burnt orange

34x30x10 cm - 24 cm

Extra shoulderstrap

Closes with topzip

Exterior: back pocket

Interior: 1 zip & 2 slit pockets

CHESTER



Chester crossover - 30984



60 Burgundy

22x15x8 cm - 65 cm

Exterior: back pocket

Interior: 1 zip & 1 slit pocket

GOBY

Goby handbag - 31101



43 Dark blue

26x18x8 cm - 10 cm

Extra shoulderstrap

Closes with topzip

Interior: 1 zip & 1 slit pocket



Goby shopper - 31102



43 Dark blue

32x30x10 cm - 18 cm

Extra shoulderstrap

Closes with topzip

Exterior: back pocket

Interior: 1 zip & 2 slit pockets

LAMMY



Lammy crossover - 31110



10 Black | 25 Cognac

30x18x8 cm - 65 cm

Closes with topzip

Exterior: back pocket

Interior: 1 zip & 2 slit pockets

Lammy hobo - 31111



10 Black | 25 Cognac

36x36x16 cm - 30 cm

Extra shoulderstrap

Closes with topzip

Exterior: back pocket

Interior: 1 zip & 2 slit pockets



TEDDY



Teddy shopper - 31119



10 Black | 66 Dusty pink

45x35x15 cm - 30 cm

Closes with topzip

Exterior: back pocket

Interior: 1 zip & 2 slit pockets

KATE



Kate saddlebag - 31105



10 Black | 43 Dark blue

19x18x7 cm - 65 cm

Closes with topzip

Exterior: back pocket

Interior: 1 zip & 1 slit pocket



Kate bun - 31106



10 Black | 43 Dark blue

31x27x15 cm - 26 cm

Extra shoulderstrap

Closes with topzip

Exterior: back pocket

Interior: 1 zip & 2 slit pockets



SAM



Sam handbag - 31126



10 Black | **25** Cognac

25x20x11 cm - 8 cm

Extra shoulderstrap

Closes with topzip

Exterior: back pocket

Interior: 1 zip & 1 slit pocket



Sam hobo - 31127



10 Black | **25** Cognac

31x30x12 cm - 26 cm

Closes with topzip

Exterior: back pocket

Interior: 1 zip & 2 slit pockets



Sam shopper - 31128



10 Black | **25** Cognac

28x30x10 cm - 10 cm

Extra shoulderstrap

Closes with topzip

Exterior: back pocket

Interior: 1 zip & 2 slit pockets

QUINCE



Quince clutch - 32643



10 Black | **25** Cognac | 66 Dusty pink

30x18x2 cm - 24 cm

Extra shoulderstrap

Exterior: back pocket

Interior: 1 zip & 1 slit pocket

Quince handbag - 31112



25 Cognac | 26 Taupe

25x18x10 cm - 10 cm

Extra shoulderstrap

Closes with topzip

Exterior: back pocket

Interior: 1 zip & 1 slit pocket



Quince crossover - 31113



25 Cognac | **26** Taupe

25x25x7 cm - 26 cm

Extra shoulderstrap

Closes with topzip

Exterior: back pocket

Interior: 1 zip & 2 slit pockets



Quince shopper - 31114



25 Cognac | **26** Taupe

30x29x12 cm - 27 cm

Closes with topzip

Exterior: back pocket

Interior: 1 zip & 2 slit pockets

FLAME



Flame crossover - 31107



25 Cognac | **43** Dark blue

30x23x4 cm - 65 cm

Closes with topzip

Exterior: back pocket

Interior: 1 zip & 2 slit pockets

Flame hobo - 31108



25 Cognac | **43** Dark blue

31x23x13 cm - 24 cm

Extra shoulderstrap

Closes with topzip

Exterior: back pocket

Interior: 1 zip & 2 slit pockets



Flame shopper - 31109



25 Cognac | **43** Dark blue

34x31x15 cm - 28 cm

Closes with topzip

Exterior: back pocket

Interior: mid compartment, 1 zip & 2 slit pockets

GINGER



Ginger hobo - 30957



33 Camel | **65** Burnt orange

30x27x10 cm - 35 cm

Closes with topzip

Interior: 1 zip & 2 slit pockets



Ginger shopper - 30958



33 Camel | 65 Burnt orange

34x23x11 cm - 12 cm

Extra shoulderstrap

Closes with topzip

Interior: 1 zip & 2 slit pockets



Ginger handbag - 30959



33 Camel | **65** Burnt orange

28x27x14 cm - 10 cm

Extra shoulderstrap

Interior: 1 zip & 2 slit pockets

BLOCK



Block crossover - 31064



10 Black | 25 Cognac | **54** Khaki

15x20x12 cm - 65 cm

Interior: 1 zip & 1 slit pocket



Block shopper - 31065



10 Black | **25** Cognac | 54 Khaki

29x22x12 cm - 15 cm

Extra shoulderstrap

Closes with topzip

Exterior: back pocket

Interior: 1 zip & 2 slit pockets



Block bucket - 31066



10 Black | 25 Cognac | 54 Khaki

30x24x12 cm - 65 cm

Exterior: back pocket

Interior: 1 zip & 2 slit pockets

LEO



Leo crossover - 31103



10 Black

22x18x6 cm - 65 cm

Closes with topzip

Exterior: back pocket

Interior: mid compartment, 1 zip & 1 slit pocket



Leo saddlebag - 31104



10 Black

23x17x9 cm - 65 cm

Interior: 1 zip & 1 slit pocket





SOPHIE



Sophie handbag + clutch - 50075



10 Black | **33** Camel | **66** Dusty pink

30x23x10 cm - 12 cm

Extra shoulderstrap

Closes with topzip

Interior: 1 zip & 1 slit pocket



**SPECIAL
OFFER**

GERBERA



Gerbera crossover - 30991



10 Black | 26 Taupe | 43 Dark blue

21,5x17x6 cm - 65 cm

Closes with topzip

Exterior: back pocket

Interior: 1 zip & 2 slit pockets

Gerbera crossover - 30992



10 Black | 26 Taupe | 43 Dark blue

29x27x4 cm - 65 cm

Closes with topzip

Exterior: back pocket

Interior: 1 zip & 2 slit pockets



Gerbera shopper - 30993



10 Black | 26 Taupe | 43 Dark blue

36x31x14 cm - 28 cm

Extra shoulderstrap

Closes with topzip

Exterior: back pocket

Interior: 1 zip & 2 slit pockets



PASSION

“An expression of our state of mind”

We have had time to think about a lot during this pandemic: what is important to me and what do I really need? This has led to an important shift towards sustainability and digitalization. Fashion is a form of self-determination, an expression of our state of mind. We will have to find a balance between changing trends and sustainability, between innovation and continuity.

We feel passionate about celebrating life again. No wonder that this story revolves around the colour closest to our heart; red. Sumptuous, feminine and sensual are the keywords which are represented in luxurious materials accentuated by soft pleats, patent and croc embossing.

We see minimalistic looks despite abundant decoration. Creating a dramatic yet feminine look with deeper shades and flashes of intense colour. Contrary to previous seasons, the colour palettes are not separated per theme, but they complement each other.



PASSION



ASTER



Aster crossover - 31077



10 Black | 43 Dark blue | 60 Burgundy

18x15x6 cm - 65 cm

Exterior: back pocket

Interior: 1 zip & 1 slit pocket

Aster hobo - 31078



10 Black | 43 Dark blue | 60 Burgundy

27x16x7 cm - 24 cm

Extra shoulderstrap

Closes with topzip

Exterior: back pocket

Interior: 1 zip & 1 slit pocket



Aster handbag - 31079



10 Black | 43 Dark blue | 60 Burgundy

28x21x12 cm - 6 cm

Extra shoulderstrap

Closes with topzip

Exterior: back pocket

Interior: 1 zip & 2 slit pockets

EDEN



Eden crossover - 31123



10 Black | **40** Blue

24x16x8 cm - 65 cm

Shoulderstrap 2 ways

Exterior: back pocket

Interior: 1 zip & 1 slit pocket

Eden handbag - 31124



10 Black | **40** Blue

27x23x13 cm - 10 cm

Extra shoulderstrap

Closes with topzip

Exterior: back pocket

Interior: 1 zip & 1 slit pocket



Eden teacosy - 31125



10 Black | **40** Blue

27x23x13 cm - 10 cm

Extra shoulderstrap

Closes with topzip

Exterior: back pocket

Interior: 1 zip & 2 slit pockets

Eden Laptopbag - 31089



10 Black

43x32x9 cm - 12 cm

Extra shoulderstrap

Closes with topzip

Exterior: back pocket & trolley slide

Interior: 1 zip & 1 slit pocket



MILOU



Milou crossover - 31135



23 Dark brown | 69 Red

28x20x3 cm - 65 cm

Exterior: back pocket

Interior: mid compartment, zip & 2 slit pockets



Milou hobo - 31136



23 Dark brown | 69 Red

34x29x12 cm - 36 cm

Extra shoulderstrap

Closes with topzip

Exterior: back pocket

Interior: 1 zip & 2 slit pockets



LARISSA



Larissa crossover - 31080



10 Black | **33** Camel | 54 Khaki | 69 Red

22x19x3 cm - 65 cm

Interior: 1 zip & 1 slit pocket

Larissa crossover - 31081

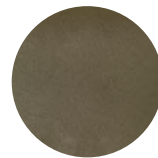


10 Black | 33 Camel | 54 Khaki | **69** Red

28x25x9 cm - 22 cm

Extra shoulderstrap

Interior: 1 zip & 1 slit pocket



Larissa shopper - 31082



10 Black | 54 Khaki | 69 Red

28/42x31x12 cm - 28 cm

Closes with topzip

Interior: 1 zip & 2 slit pockets



IRIS



Iris baquette - 31073



10 Black | 23 Dark brown | 69 Red
31x16x8 cm - 22 cm
Closes with topzip
Interior: 1 zip & 1 slit pockets

Iris crossover - 31074



10 Black | 23 Dark brown | 69 Red
26,5x18x10 cm - 65 cm
Closes with topzip
Exterior: back pocket
Interior: 1 zip & 1 slit pockets



Iris bucket - 31075



10 Black | 23 Dark brown | 69 Red
24x28x15 cm - 15 cm
Extra shoulderstrap
Closes with topzip
Exterior: back pocket
Interior: 1 zip & 2 slit pockets

Iris shopper - 31076



10 Black | 23 Dark brown | 69 Red
34x26x12 cm - 15 cm
Extra shoulderstrap
Closes with topzip
Exterior: back pocket
Interior: mid compartment, side compartment,
1 zip & 2 slit pockets



LIATRIS



Liatri crossover - 31086



33 Camel | 43 Dark blue | 69 Red
19x16x10 cm - 65 cm
Shoulderstrap 2 ways
Interior: 1 slit pocket



Liatri framebag - 32644



10 Black | 33 Camel | **43** Dark blue
23x14x8 cm
Extra shoulderstrap
Interior: 1 zip pocket



Liatri handbag - 31087



33 Camel | **43** Dark blue | 69 Red
28x25x10 cm - 10 cm
Extra shoulderstrap
Exterior: back pocket
Interior: 1 zip & 2 slit pockets

Liatri teacosy - 31088



33 Camel | 43 Dark blue | **69** Red
27x29x12 cm - 8 cm
Extra shoulderstrap
Closes with topzip
Exterior: back pocket
Interior: 1 zip & 2 slit pockets



CHAINY



Chainy half moon bag - 31132



10 Black | **60** Burgundy
22x19x6 cm - 65 cm
Adjustable shoulderstrap
Exterior: back pocket
Interior: 1 zip & 1 slit pocket



Chainy baquette - 31133



10 Black | **60** Burgundy
31x16x8 cm - 22 cm
Closes with topzip
Exterior: back pocket
Interior: 1 zip & 1 slit pocket





BULAGGI 30

LOTUS



Lotus saddlebag - 31098



25 Cognac | 33 Camel | 43 Dark blue

19x17x6 cm - 65 cm

Interior: 1 slit pocket



Lotus clutch - 32647



25 Cognac | **33** Camel | 43 Dark blue

25x14x2 cm - 26 cm

Extra shoulderstrap

Interior: 1 slit pocket



Lotus shopper - 31099



25 Cognac | **33** Camel | 43 Dark blue

28x31x11 cm - 21-27 cm

Adjustable shoulderstrap

Closes with topzip

Exterior: back pocket

Interior: 1 zip & 2 slit pockets

Lotus handbag - 31100



25 Cognac | 33 Camel | **43** Dark blue

28x24x12 cm - 12 cm

Extra shoulderstrap

Closes with topzip

Exterior: back pocket

Interior: 1 zip & 2 slit pockets



DEB



Deb crossover - 30996



62 Orange

30x22x1 cm - 65 cm

Closes with topzip

Exterior: back pocket

Interior: 1 zip pocket

Deb messenger - 30997



62 Orange

29x20x7 cm - 65 cm

Closes with topzip

Exterior: back pocket

Interior: mid compartment,

1 zip & 2 slit pockets



Deb hobo - 30998



62 Orange

34x35x13 cm - 29 cm

Closes with topzip

Exterior: back pocket

Interior: 1 zip & 1 slit pocket

BOUQUET



Bouquet crossover - 31092



10 Black

21x17x7 cm - 65 cm

Closes with topzip



Bouquet handbag - 31093



10 Black

24x21x9 cm - 8 cm

Extra shoulderstrap

Closes with topzip

Interior: 1 zip & 2 side compartments



ALICE



Alice crossover - 31115



10 Black | 66 Dusty pink | **83** Dark yellow

21,5x17x6 cm - 65 cm

Closes with topzip

Exterior: back pocket

Interior: 1 zip & 1 slit pocket

Alice crossover - 31116



10 Black | 66 Dusty pink | 83 Dark yellow

27x27x3 cm - 65 cm

Closes with topzip

Exterior: back pocket

Interior: 1 zip & 2 slit pockets



Alice hobo - 31117



10 Black | **66** Dusty pink | 83 Dark yellow

34x30x11 cm - 30 cm

Closes with topzip

Exterior: back pocket

Interior: 1 zip & 2 slit pockets

LISA



Lisa hobo - 50076



97= **10** Black | **33** Camel | **69** Red

30x30x11 cm - 26 cm

Extra shoulderstrap

Closes with topzip

Exterior: back pocket

Interior: 1 zip & 2 slit pockets

**SPECIAL
OFFER**

ANEMOON



Anemoon wallet - 10473



10 Black | **69** Red

19x10x2 cm

Closes with topzip

Interior: 1 zip & 3 slit pockets & card pockets

Anemoon half moon bag - 31083



10 Black | 66 Dusty pink | 69 Red | **83** Dark yellow

21x16x10 cm - 65 cm

Interior: 1 zip & 1 slit pocket



Anemoon crossover - 31084



10 Black | **66** Dusty pink | 69 Red | 83 Dark yellow

21x14x9 cm - 65 cm

Exterior: back pocket

Interior: 1 zip & 1 slit pocket

Anemoon handbag - 31085



10 Black | 66 Dusty pink | **69** Red | 83 Dark yellow

29x22x14 cm - 12 cm

Extra shoulderstrap

Closes with topzip

Exterior: back pocket

Interior: 2 side compartments, 1 zip & 1 slit pocket





QUINCE



Quince saddlebag - 30941

●
69 Red
23x19x8 cm - 12 cm
Extra shoulderstrap
Exterior: back pocket
Interior: 1 zip & 1 slit pocket



Quince clutch - 32632

●
69 Red
28x15x2 cm - 65 cm
Extra shoulderstrap
Closes with topzip
Interior: 1 zip & 2 slit pockets



Quince box bag - 32635

●
69 Red
20x12x4 cm - 26 cm
Extra shoulderstrap



Quince hobo - 30942

●
69 Red
36x28x10 cm - 32 cm
Closes with topzip
Exterior: back pocket
Interior: 1 zip & 1 slit pocket



Quince handbag - 30943

●
69 Red
32x24x12 cm - 15 cm
Extra shoulderstrap
Closes with topzip
Exterior: back pocket
Interior: mid compartment, 1 zip & 2 slit pockets

PEONY



Peony handbag - 30962



10 Black

29x21x10 cm - 11 cm

Extra shoulderstrap

Closes with topzip

Exterior: back pocket

Interior: 1 zip & 1 slit pocket



Peony shopper - 30963



10 Black

29x29x10 cm - 25 cm

Closes with topzip

Exterior: back pocket

Interior: 1 zip & 1 slit pocket



HEATHER



Heather crossover - 30989



10 Black | 65 Burnt orange | 66 Dusty pink

25x18x10 cm - 24 cm

Extra shoulderstrap

Closes with topzip

Exterior: back pocket

Interior: 1 zip & 2 slit pockets

Heather crossover - 31118



10 Black | 65 Burnt orange | 66 Dusty pink

29x27x4 cm - 65 cm

Closes with topzip

Exterior: back pocket

Interior: 1 zip & 2 slit pockets



Heather hobo - 30990



10 Black | 65 Burnt orange | 66 Dusty pink

32x34x14 cm - 31 cm

Adjustable shoulderstrap

Closes with topzip

Exterior: back pocket

Interior: mid compartment, 1 zip & 2 slit pockets

KAYLA



Kayla half moon bag - 30781



10 Black | **43** Dark blue

22x19x6 cm - 65 cm

Exterior: back pocket

Interior: 1 zip & 1 slit pocket



Kayla handbag - 30782



10 Black | **43** Dark blue

30x26x11 cm - 12 cm

Extra shoulderstrap

Closes with topzip

Exterior: back pocket

Interior: 1 zip & 2 slit pockets



BULAGGI goes green

We are aware of the increasing pressure on the environment, and of how this has led to a greater demand for more environmentally-friendly materials. Therefore we have been sourcing new materials that are also more acceptable from an environmental friendly perspective. We are very proud and satisfied that we have succeeded in finding a new eco-friendly, vegan material. This material is **water-based** and **solvent-free**.

Energy consumption and waste from by-products have been reduced significantly as compared to the traditional production process for synthetic leather.

Thanks to these savings in energy and the avoidance of solvents, the production of the bags is a **low-carbon process**. This contributes to the steps needed to protect our environment, not least because another benefit of this process is a huge saving on water with a **percentage of 70 (!)** compared to the traditional production methods.

16 models, divided over 5 groups, in 11 different colours, from our Autumn / Winter 2021 Collection have been produced in this eco-friendly way: the **Gauze, Basalt, Acorn, Cynthia & Rainbow**. You will find these bags on the following pages.

Besides this BULAGGI tries to take an extra step in the right direction **eco-friendly** wise with every collection. From our SS21 onwards we have realized a **plastic reduction of as much as 80%**! We have accomplished this by for example no longer using polybags but instead we now use recycled paper and/or dust bags. Also our bags are stuffed with recycled paper instead of plastics. For AW 21-22 we achieved an even higher percentage of nearly 90% less plastic than before.





BASALT



Basalt crossover - 31033



10 Black | 25 Cognac | 54 Khaki

18x16x6 cm - 65 cm

Closes with topzip

Exterior: back pocket

Interior: 1 zip pocket

eco friendly



Basalt crossover - 31034



10 Black | **25** Cognac | 54 Khaki

24x20x9 cm - 24 cm

Extra shoulderstrap

Closes with topzip

Exterior: back pocket

Interior: 1 zip & 1 slit pocket

eco friendly



Basalt shopper - 31036



10 Black | 25 Cognac | 54 Khaki

29x30x12 cm - 22 cm

Closes with topzip

Exterior: back pocket

Interior: 1 zip & 2 slit pockets

eco friendly



Basalt shopper - 31037



10 Black | 25 Cognac | **54** Khaki

33x27x13 cm - 14 cm

Extra shoulderstrap

Closes with topzip

Exterior: back pocket

Interior: mid compartment, 1 zip & 2 slit pockets

eco friendly

ACORN



Acorn shopper - 31021



10 Black | 25 Cognac
21/42x31x10 cm - 23 cm
Closes with topzip
Exterior: back pocket
Interior: 1 zip & 1 slit pocket
eco friendly



Acorn crossover - 31020



10 Black | 25 Cognac
16/33x23x9 cm - 17 cm
Extra shoulderstrap
Closes with topzip
Exterior: back pocket
Interior: side compartment, 1 zip pocket & 2 slit pockets
eco friendly





RAINBOW



Rainbow handbag - 31134

●
10 Black
26x20x14 cm - 12 cm
Extra shoulderstrap
Closes with topzip
Interior: side compartment,
1 zip+ 2 slit pockets
eco friendly



Rainbow clutch - 32649

●
10 Black
27x14,5x4 cm - 26 & 65 cm
Extra shoulderstrap
Interior: 1 slit pocket
eco friendly



Rainbow hobo - 31129

●
10 Black
27x26x6 cm - 29 cm
Closes with topzip
Interior: 1 zippocket
eco friendly



CYNTHIA



Cynthia half moon bag - 31095



10 Black | 43 Dark blue | **65** Burnt orange

22x19x6 cm - 65 cm

Exterior: back pocket

Interior: 1 zip & 1 slit pocket

eco friendly

Cynthia shopper - 31096



10 Black | 43 Dark blue | 65 Burnt orange

24/40x25x10 cm - 26 cm

Adjustable shoulderstrap

Closes with topzip

Exterior: back pocket

Interior: 1 zip & 1 slit pocket

eco friendly



Cynthia handbag - 31097



10 Black | **43** Dark blue | 65 Burnt orange

30x22,5x9,5 cm - 13 cm

Extra shoulderstrap

Closes with topzip

Exterior: back pocket

Interior: 1 zip & 1 slit pocket

eco friendly



GAUZE



Gauze crossover - 31010



10 Black

19x15x7 cm - 65 cm

Closes with topzip

Interior: 1 zip & 1 slit pocket

eco friendly

Gauze crossover - 31012



10 Black

23x23x7 cm - 65 cm

Exterior: back pocket

Interior: 1 zip & 1 slit pocket

eco friendly



Gauze hobo - 31011



10 Black

36x34x14 cm - 30 cm

Extra shoulderstrap

Closes with topzip

Exterior: back pocket

Interior: 1 zip & 1 slit pocket, side compartment

eco friendly



PARTY



Acacia mobile pocket - 10471



10 Black

11,5x18x1 cm - 65 cm

Extra shoulderstrap



Eden partybag - 32648



10 Black

18x17x8 cm - 8 cm

Extra shoulderstrap

1 slit pocket



Paw framebag - 32638



33 Camel | **40** Blue | 60 Burgundy

27x15x2 cm

Long & short shoulderstrap

Interior: 1 slit pocket



Waterfall clutch - 32646



10 Black | 43 Dark blue | **60** Burgundy

27x14,5x4 cm

Long & short shoulderstrap

Interior: 1 zip pocket



Bibis clutch - 32634



70 Gold | 72 Pewter

28x14x3 cm

Extra shoulderstrap

Closes with topzip

Interior: 1 zip & 1 slit pocket



Lotus clutch - 32647



25 Cognac | 33 Camel | 43 Dark blue

25x14x2 cm

Extra shoulderstrap

Interior: 1 slit pocket

PARTY



Stephi envelop - 32637



10 Black | 26 Taupe | **48** Dark purple
27x13x3 cm
Short & long shoulderstrap
Interior: 1 slit pocket



Aimy envelop - 32606



10 Black | 45 Purple | **60** Burgundy
24x11x2 cm
Short & long shoulderstrap
Interior: 1 slit pocket



Croc clutch - 32631



10 Black | 64 fuchsia
29x16x1 cm
Extra shoulderstrap
Exterior: back pocket



Maggy clutch - 32645



99 Multi
30x12x2 cm
Extra shoulderstrap
1 slit pocket



Wally minibag - 10474



10 Black
18x10x6 cm



Quince clutch - 32643



10 Black | 25 Cognac | **66** Dusty pink
30x18x2 cm - 24 cm
Extra shoulderstrap
Exterior: back pocket
Interior: 1 zip & 1 slit pocket

NOS



Pam clutch - 32547



10 Black | 43 Dark Blue | 47 Lilac | **56** Mint | 64 Fuchsia | **69** Red | 80 Natural

26x10x5 cm

long & short shoulderstrap

NOS



Suka clutch - 32508



10 Black | **34** Champagne | **43** Dark Blue | **71** Silver

26x10x5 cm

long & short shoulderstrap

NOS



Sabella envelope - 32489



10 Black | 18 Light Grey | 29 Sand | **43** Dark Blue | **61** Pastel Pink

27x12x4 cm

long & short shoulderstrap

NOS = Never Out of Stock

NOS



Bulaggi clutch - 32313



10 Black | **26** Taupe | 31 Bone | 34 Champagne | **42** Cobalt | 43 Dark Blue | 45 Purple |
47 Lilac | 60 Burgundy | 61 Pastel Pink | 64 Fuchsia | **69** Red | 71 Silver

22x11x5 cm

long & short shoulderstrap

NOS



Twiggy envelope - 32608



10 Black | **34** Champagne | **43** Dark Blue | 71 Silver

22x12x2 - 26 + 65 cm

long & short shoulderstrap

NOS



Jasmin box - 32600



71 Silver

17x10x4 - 26 +60 cm

long & short shoulderstrap

NOS

POS



Metal bagstand - 0100



Noteblock - 0008
10.5x14.5 cm



Clutch / wallet display - 0011



Logo block - 0090
22 cm

Showcards - 0095

16x18,5 cm
24x29.5 cm



INDEX AUTUMN-WINTER 2021-2022

Art.nr	colour	page
0008	POS - Noteblock	54
0011	POS - Clutch / wallet display	54
0090	POS - Logo block	54
0095	POS - Showcards	54
0100	POS - Metal bagstand	54
10471	10	50
10473	10 69	36
10474	10	51
30781	10 43	41
30782	10 43	41
30941	69	38
30942	69	38
30943	69	38
30957	33 65	13
30958	33 65	13
30959	33 65	13
30962	10	39
30963	10	39
30984	60	7
30989	10 65 66	40
30990	10 65 66	40
30991	10 26 43	18
30992	10 26 43	18
30993	10 26 43	18
30996	62	32
30997	62	32
30998	62	32
31010	10	48
31011	10	48
31012	10	48
31020	10 25	45
31021	10 25	45
31033	10 25 54	44
31034	10 25 54	44
31036	10 25 54	44
31037	10 25 54	44
31064	10 25 54	14
31065	10 25 54	14
31066	10 25 54	14
31073	10 23 69	27
31074	10 23 69	27
31075	10 23 69	27
31076	10 23 69	27
31077	10 43 60	22
31078	10 43 60	22
31079	10 43 60	22
31080	10 33 54 69	25
31081	10 33 54 69	25
31082	10 54 69	25
31083	10 66 69 83	36
31084	10 66 69 83	36
31085	10 66 69 83	36
31086	33 43 69	28
31087	33 43 69	28
31088	33 43 69	28
31089	10	23
31092	10	33
31093	10	33
31095	10 43 65	47
31096	10 43 65	47
31097	10 43 65	47

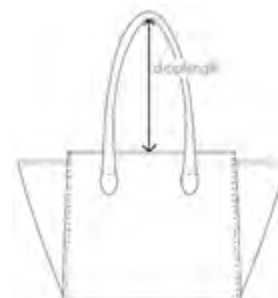
Art.nr	colour	page
31098	25 33 43	31
31099	25 33 43	31
31100	25 33 43	31
31101	43	7
31102	43	7
31103	10	15
31104	10	15
31105	10 43	9
31106	10 43	9
31107	25 43	12
31108	25 43	12
31109	25 43	12
31110	10 25	8
31111	10 25	8
31112	25 26	11
31113	25 26	11
31114	25 26	11
31115	10 66 83	34
31116	10 66 83	34
31117	10 66 83	34
31118	10 65 66	40
31119	10 66	8
31120	10 43 65	6
31121	10 43 65	6
31122	10 43 65	6
31123	10 40	23
31124	10 40	23
31125	10 40	23
31126	10 25	10
31127	10 25	10
31128	10 25	10
31129	10	46
31132	10 60	29
31133	10 60	29
31134	10	46
31135	23 69	24
31136	23 69	24
32313	10 31 34 42 43 45 47 60 61 64 69 71	52
32489	10 18 29 43 61	51
32508	10 34 43 71	51
32547	10 43 47 56 64 80	51
32600	71	52
32606	10 45 60	51
32608	10 34 71	52
32631	10 64	51
32632	69	38
32634	70 72	50
32635	69	38
32637	10 26 48	51
32638	33 40 60	50
32643	10 25 66	11 + 51
32644	10 33 43	28
32645	99	51
32646	10 43 60	50
32647	25 33 43	31 + 50
32648	10	50
32649	10	46
50075	10 33 66	17
50076	97= 10 33 69	35



BULAGGI colours farben kleuren colores	
10	Black Schwarz Zwart Negro
18	Light grey Hell Grau Lichtgrijs Gris claro
23	Dark Brown Dunkel Braun Donker bruin Marrón oscuro
25	Cognac Kognak Cognac Coñac
26	Taupe Taupe Taupe
29	Sand Sand Zand Arena
31	Bone Eierschale Creme Hueso
33	Camel Camel Camel Beige
34	Champagne Champagne Champagne Champán
40	Blue Blau Blauw Azul
42	Cobalt blue Kobalt Blau Kobaltblauw Azul Cobalto
43	Dark blue Dunkel Blau Donkerblauw Azul oscuro/Marino
45	Purple Violett Paars Violeta
47	Lilac Lila Lila Lila
48	Dark purple Dunkel violett Donker paars Violeta oscuro
54	Khaki green Khaki Grün Khaki groen Caqui verde
56	Mint Bla grün Mint Verde menta
60	Burgundy Wein Rot Bordeaux Burdeos
61	Pastel Pink Pastell Rosa Pastel roze Rosa pastel
62	Orange Orange Oranje Naranja
64	Fuchsia Fuchsia Fuchsia Fucsia
65	Burnt Orange Rost Roest Herrumbre
66	Dusty pink Alt Rosa Oud roze Rosa Viejo
69	Red Rot Rood Rojo
70	Gold Gold Goud Dorado
71	Silver Silber Zilver Plateado
72	Pewter Zinn Tin Estaño
80	Natural Naturel Naturel Natural
83	Dark yellow Dunkel Gelb Donker geel Amarillo oscuro
97	Assorted box Assorti Karton Assorti doos Caja surtida
99	Multi Multi Multi Multi

Grey: POS
 Green: ECO friendly
 Blue: NOS - Never Out of Stock
 Red: SPECIAL OFFER

Sizes: l x h x d - droplength (cm)
 Example: 35x34x14 cm - 20 cm



BULAGGI

the Bag



Bulaggi & More B.V. | Franciscusweg 227 | 1216 SE Hilversum | The Netherlands
phone + 31 35 621 27 57 | fax + 31 35 621 57 91
info@bulaggi.com | www.bulaggi.com

FOLLOW US:  Bulaggi The Bag Original |  @Bulaggi The Bag