

Parts Catalogue

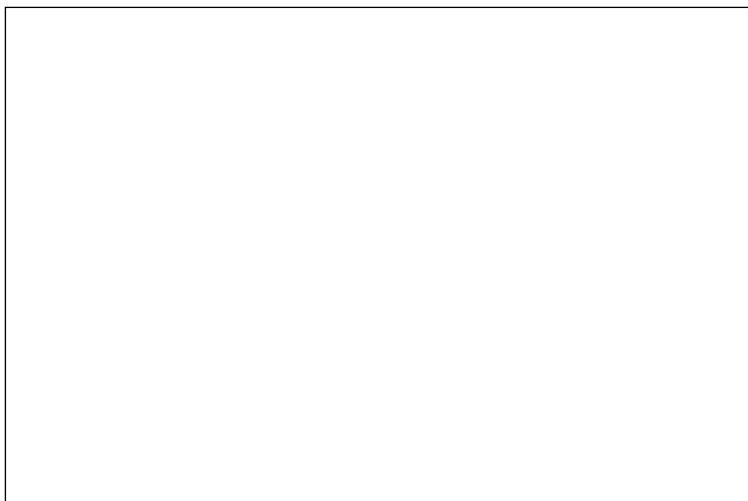
'19 KX85 DKF(AL)

(KX85-II)

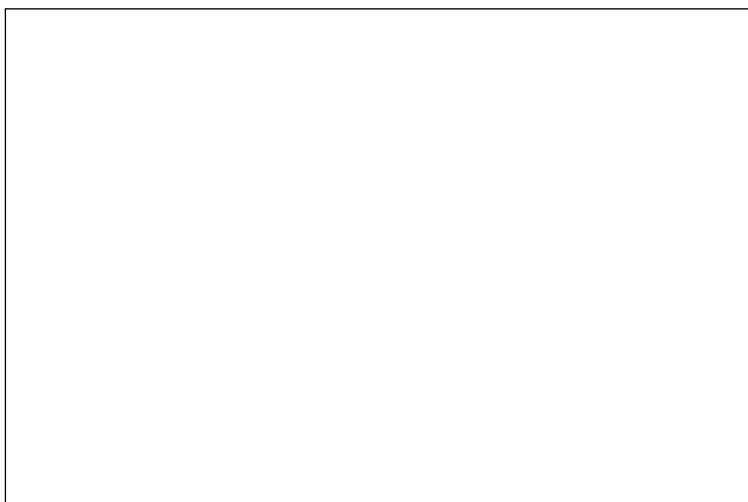
Year & Model	'19 KX85DKF
Color	1.LIME GREEN(777)
VIN No. Range	JKBKXFDC_KA011001 - (AS) JKBKX085DDA011001 -
Engine No. Range	KX085CE000001 -
Owner's Manual No.	99986-0091 99976-0138(E/F/G) 99976-0139(I/ES/NL)
Service Manual No.	99924-1470-06

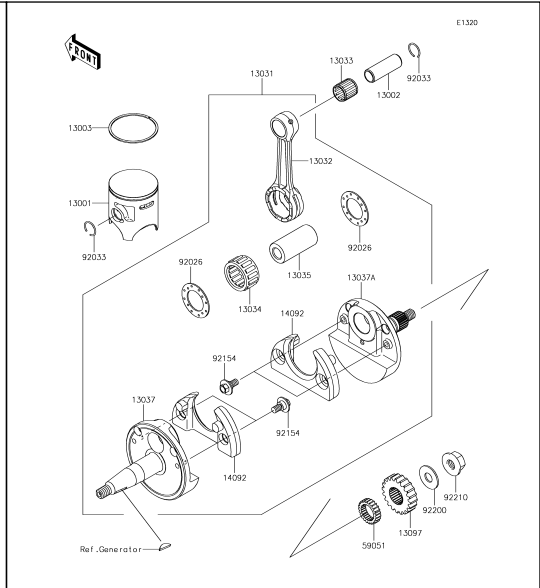
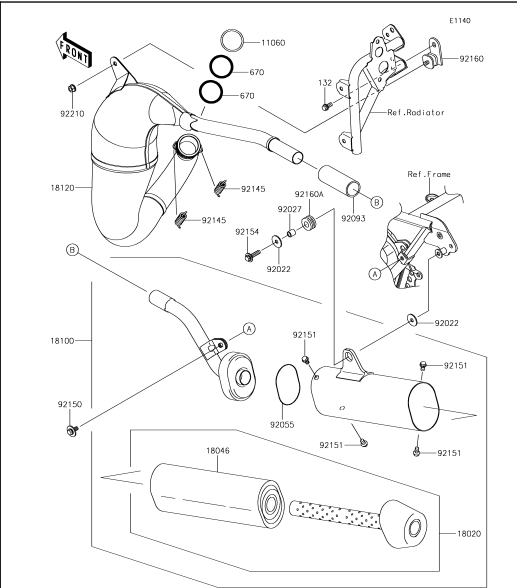
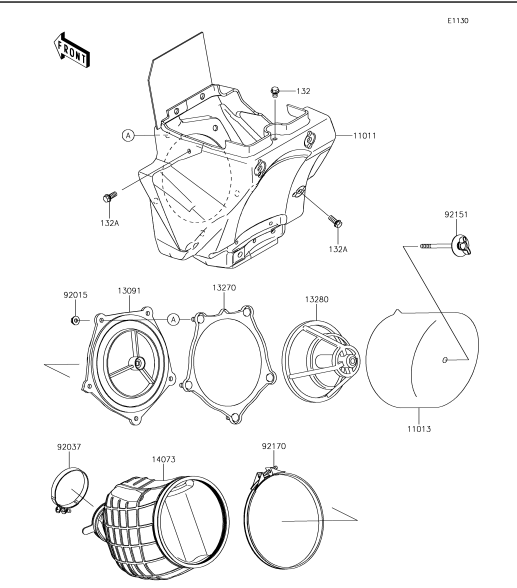
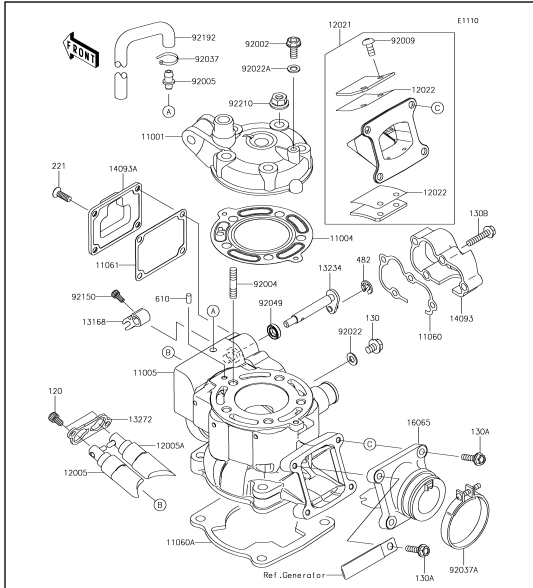
KX85DKF

Left Side View



Right Side View



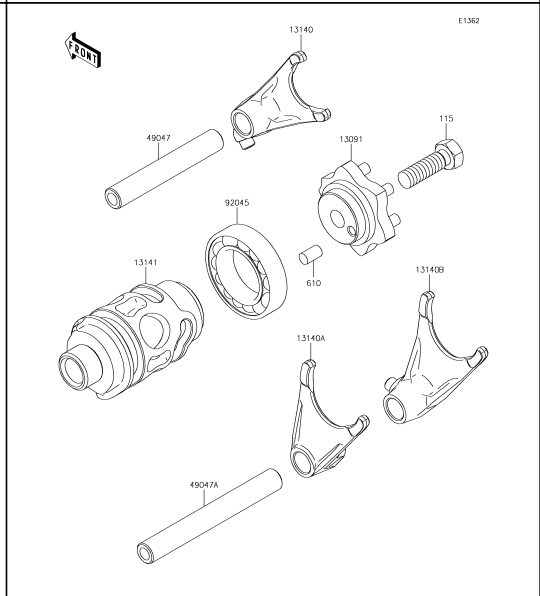
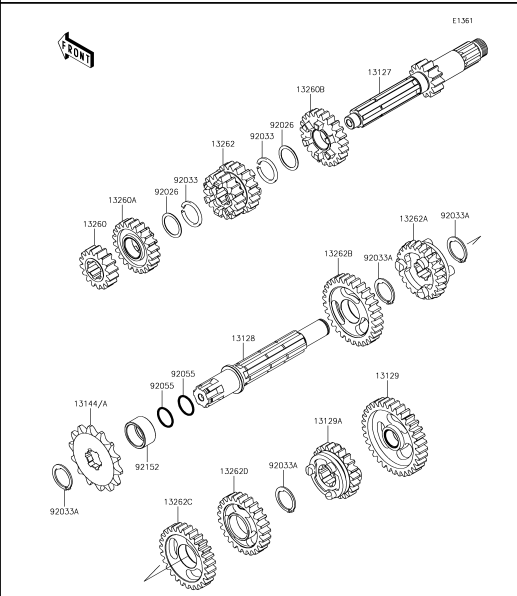
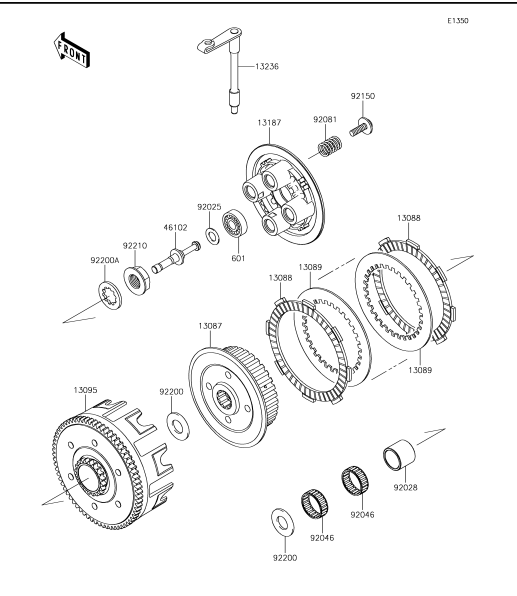
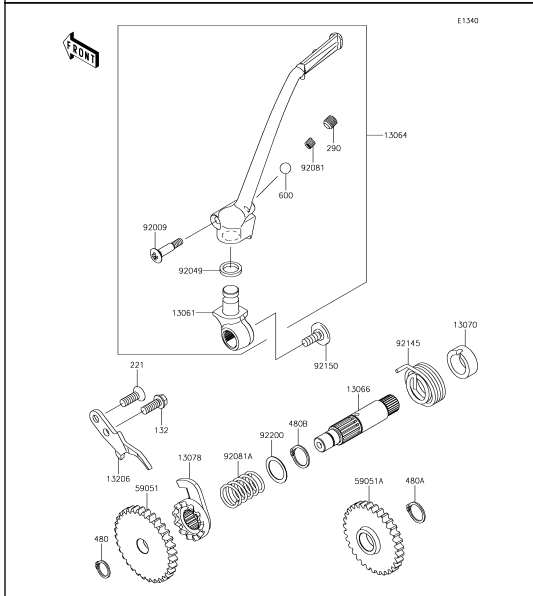


1 Cylinder Head/Cylinder

2 Air Cleaner

3 Muffler(s)

4 Crankshaft/Piston(s)

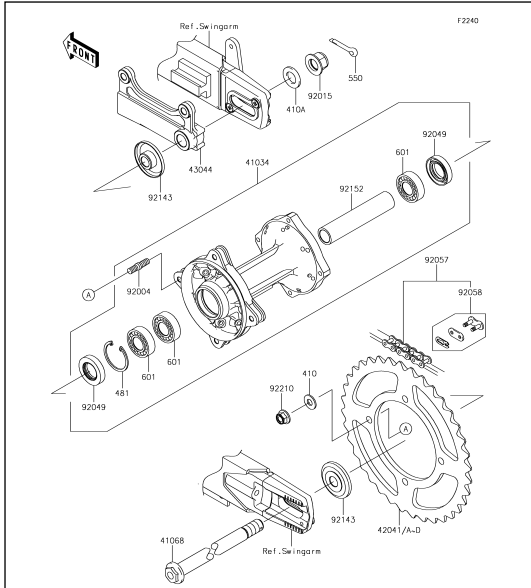


5 Kickstarter Mechanism

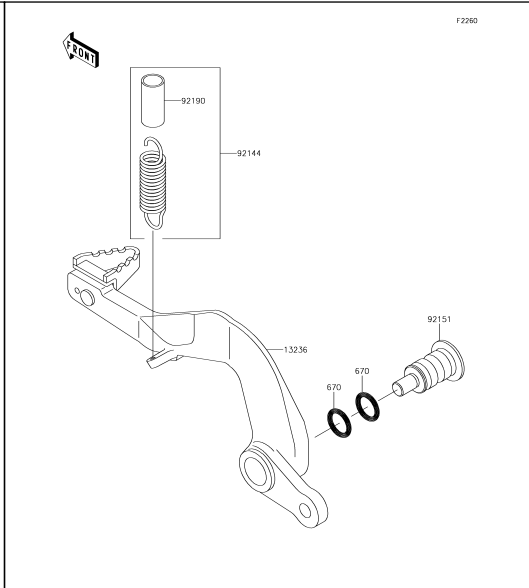
6 Clutch

7 Transmission

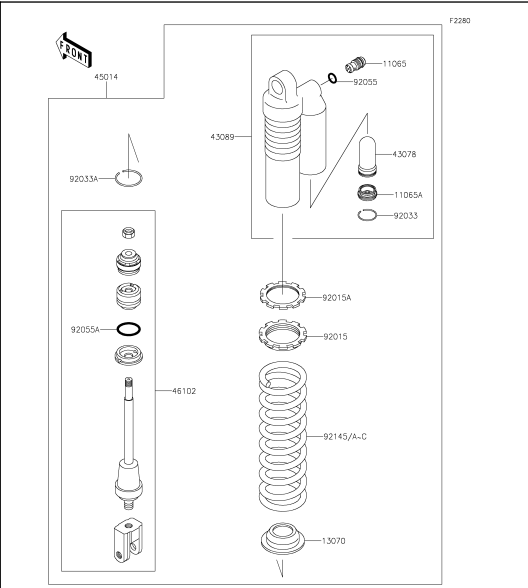
8 Gear Change Drum/Shift Fork(s)



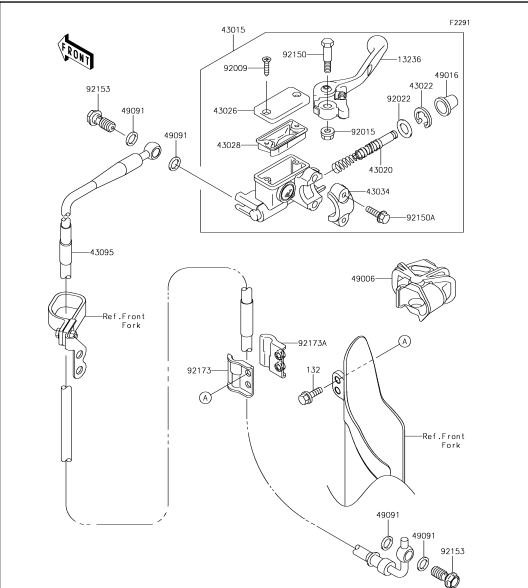
25 Rear Hub



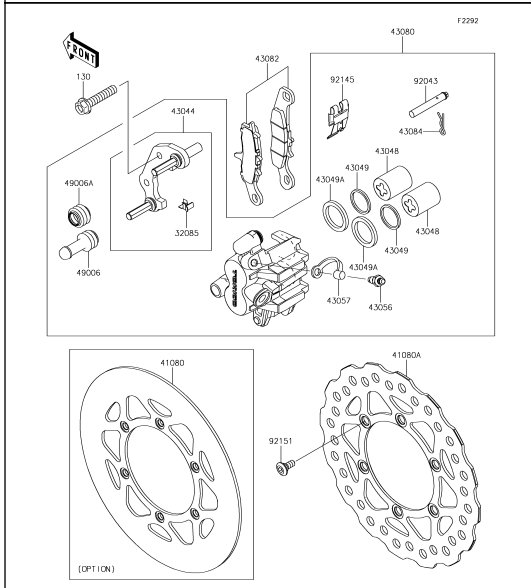
26 Brake Pedal



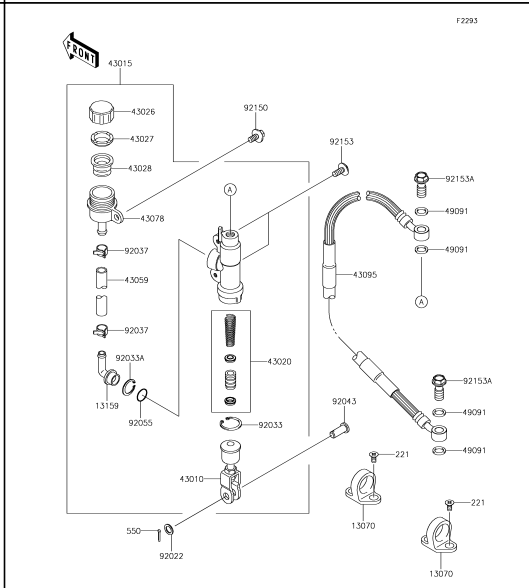
27 Shock Absorber(s)



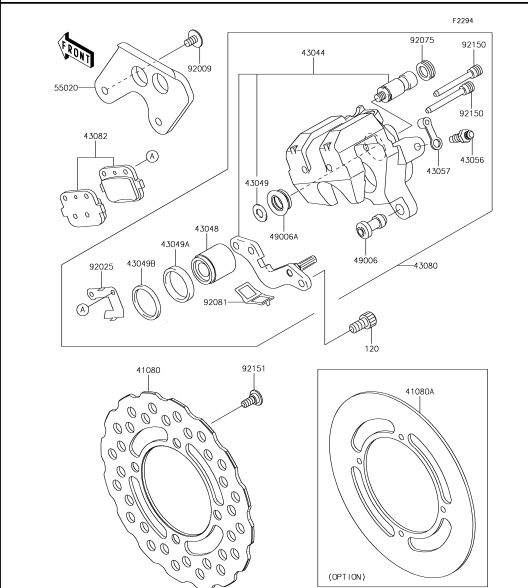
28 Front Master Cylinder



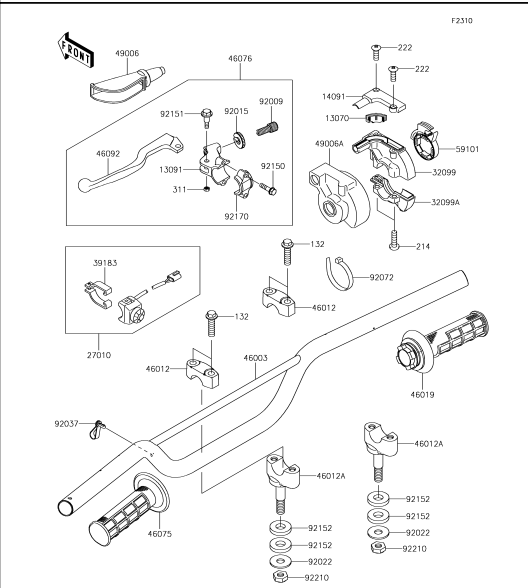
29 Front Brake



30 Rear Master Cylinder



31 Rear Brake



32 Handlebar

F2910

FRONT

92150

(58029)

W00

58029

41 Accessory

F2920

Owner's Manual
(Local Procurement)

99976/A

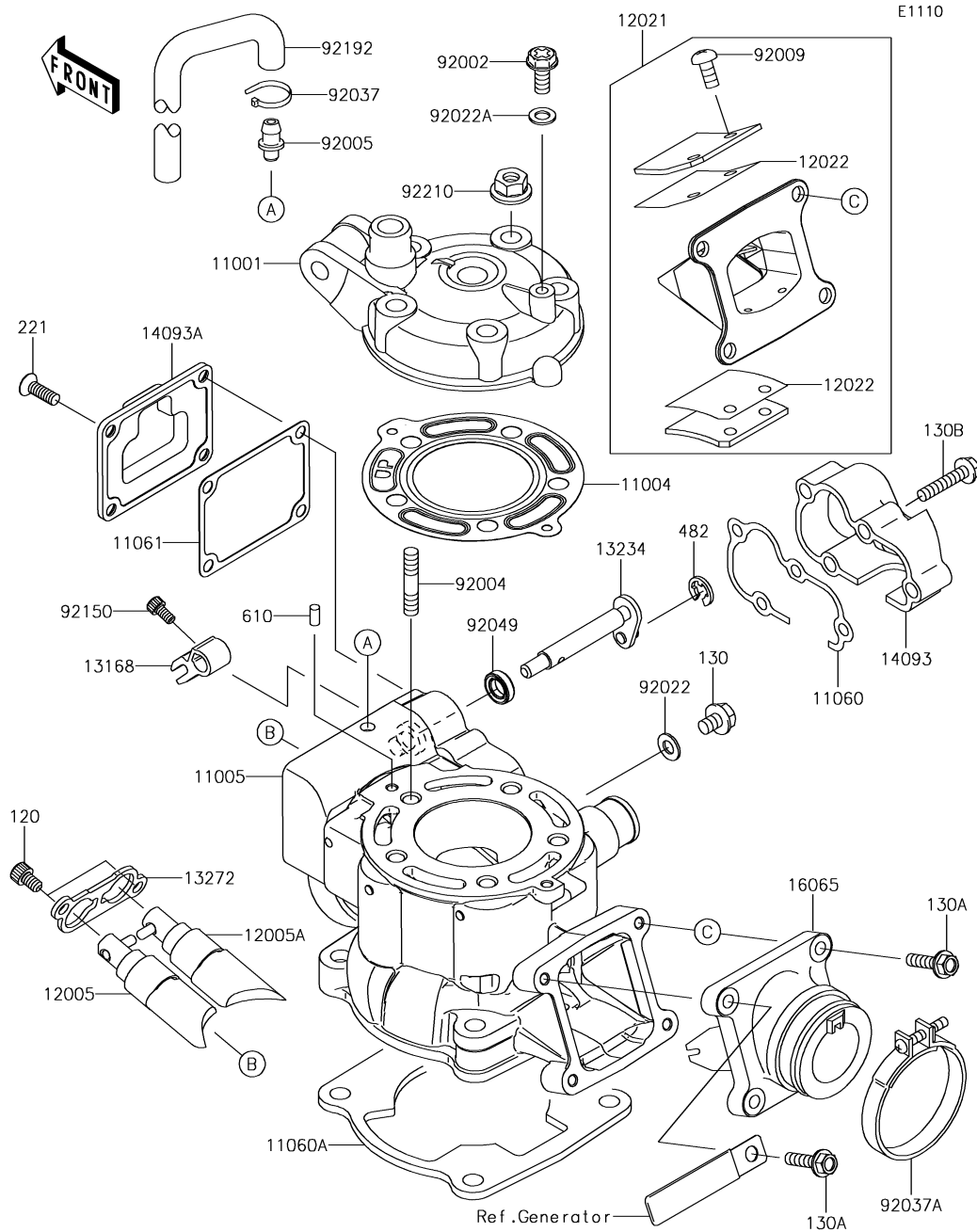
Ref.No.	Language
(99976)	English
	French
	German
	Italian
(99976A)	Spanish
	Dutch

Service Manual

99901
99924
99924
99953
99954
99955
99956

Ref.No.	Language
(99901)	Dutch
(99924)	English
(99953)	German
(99954)	French
(99955)	Italian
(99956)	Spanish

42 Manual(EU)



1. Cylinder Head/Cylinder

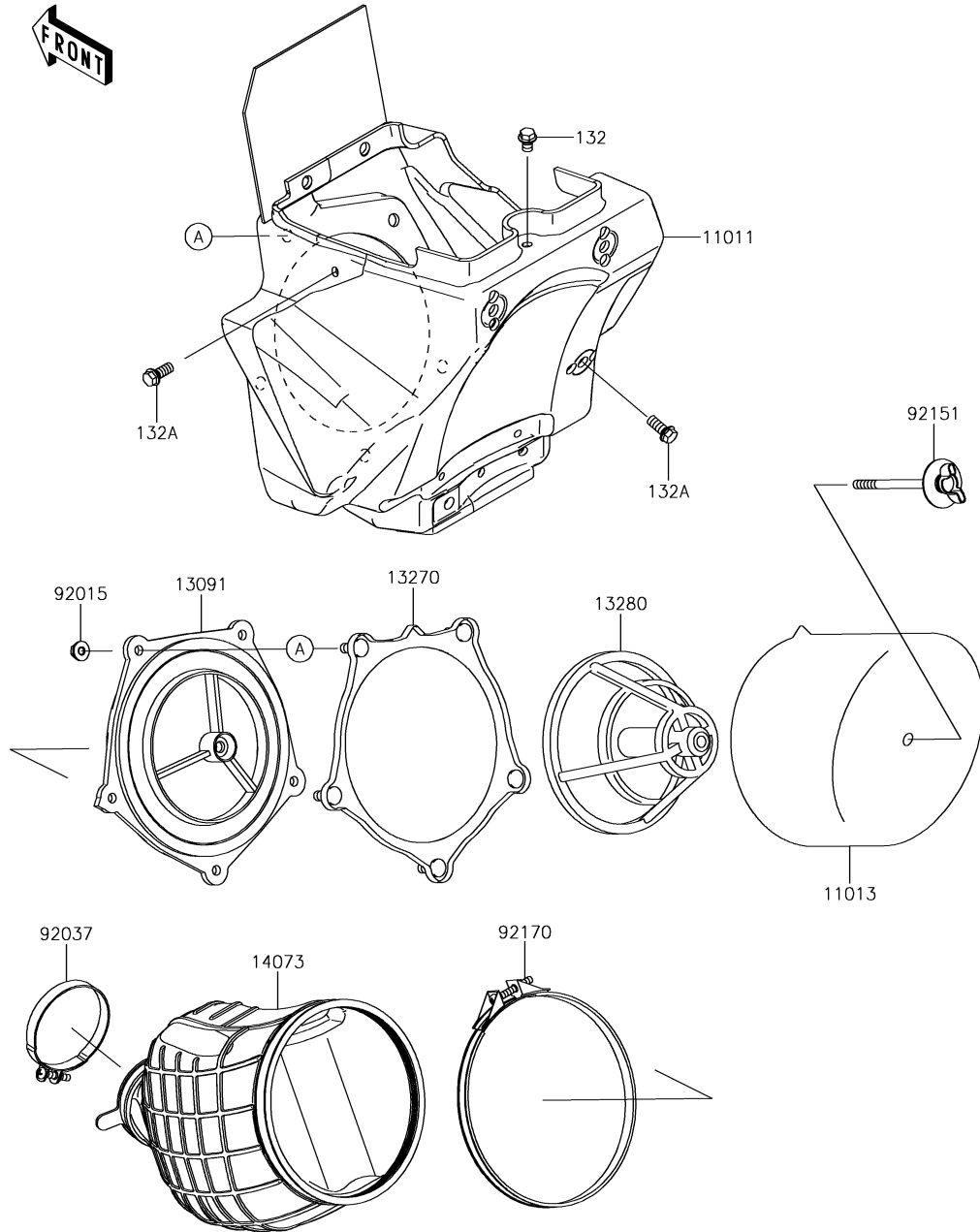
Ref. No.	Part No.	Description	Spec Code	Quantity	
				'19	DKF
11001	11001-0771	HEAD-CYLINDER		1	
11004	11004-0760	GASKET-HEAD		1	
11005	11005-0621	CYLINDER-ENGINE		1	
11060	11060-1778	GASKET,GOVERNOR COVER		1	
11060A	11060-1779	GASKET,CYLINDER BASE		1	
11061	11061-0889	GASKET		1	
12005	12005-0726	VALVE-EXHAUST		1	
12005A	12005-0728	VALVE-EXHAUST		1	
12021	12021-1123	VALVE-ASSY-REED		1	
12022	12022-1084	VALVE-REED		2	
13168	13168-0779	LEVER		1	
13234	13234-0048	SHAFT-COMP		1	
13272	13272-1450	PLATE		1	
14093	14093-0003	COVER		1	
14093A	14093-0046	COVER		1	
16065	16065-1372	HOLDER-CARBURETOR		1	
92002	92002-1222	BOLT,6X10		1	
92004	92004-1253	STUD,8X33		5	
92005	92005-0050	FITTING		1	
92009	92009-1014	SCREW,REED VALVE		4	
92022	92022-077	WASHER,6.1X12X1		1	
92022A	92022-304	WASHER,6.2X11X1		1	
92037	92037-1173	CLAMP		1	
92037A	92037-1843	CLAMP		1	
92049	92049-1238	SEAL-OIL,SD088144		1	
92150	92150-1888	BOLT,SOCKET,4X8		1	
92192	92192-0265	TUBE,L=426.3		1	
92210	92210-0076	NUT,8MM		5	
120	120CA0510	BOLT-SOCKET,5X10		2	
130	130AA0608	BOLT-FLANGED,6X8		1	
130A	130BA0520	BOLT-FLANGED,5X20		4	
130B	130BA0525	BOLT-FLANGED,5X25		4	
221	221AA0512	SCREW-CSK-CROS,5X12		4	
482	482J5000	CIRCLIP-TYPE-E,5MM		1	
610	610A0408	ROLLER,4X8		2	

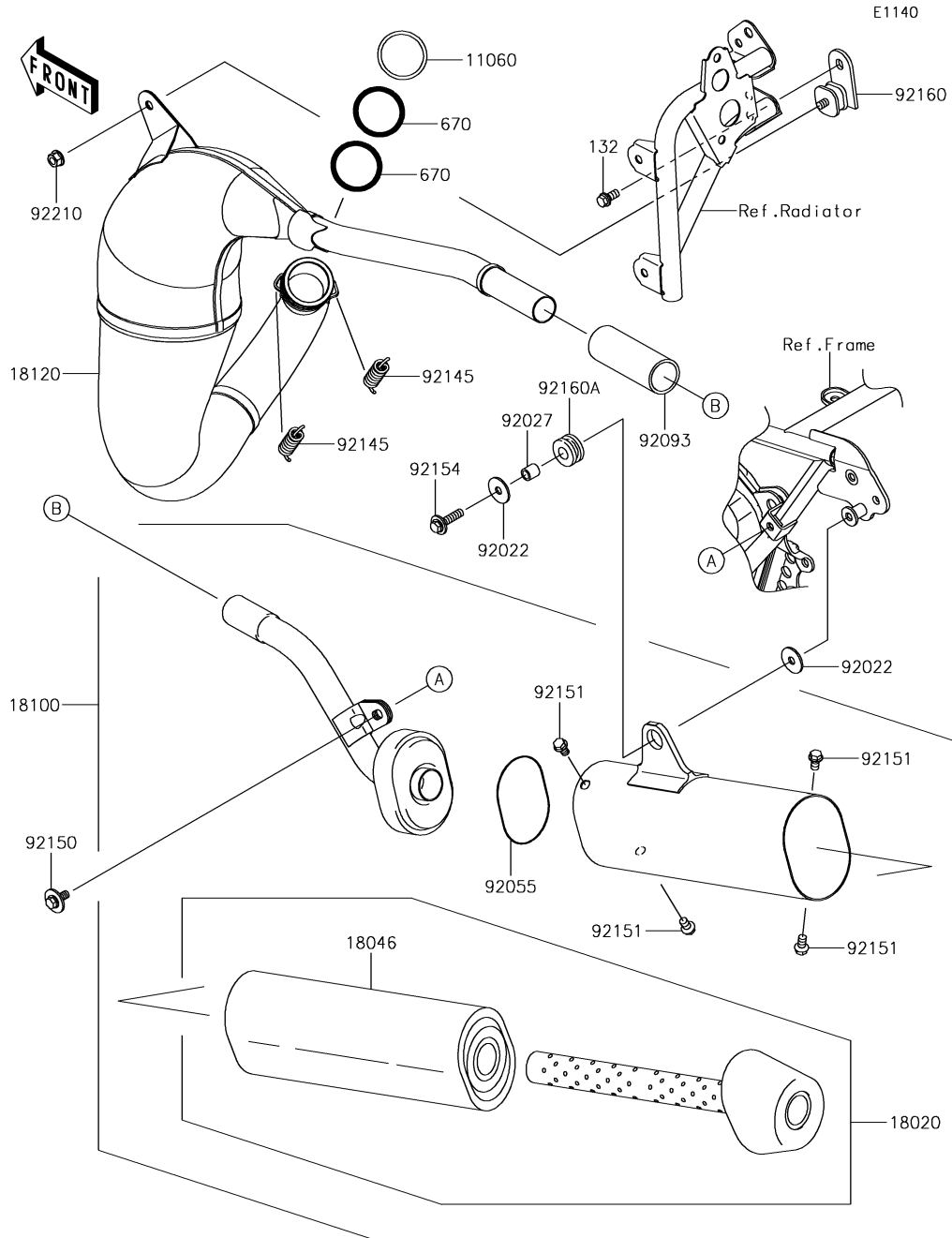
E1130

2. Air Cleaner

Ref. No.	Part No.	Description	Spec Code	Quantity			
				'19			
				DKF			

11011	11011-1612	CASE-AIR FILTER				1
11013	11013-0736	ELEMENT-AIR FILTER				1
13091	13091-1697	HOLDER				1
13270	13270-1905	PLATE,AIR FILTER				1
13280	13280-0768	HOLDER,ELEMENT				1
14073	14073-1785	DUCT				1
92015	92015-1259	NUT,FLANGED,5MM				5
92037	92037-1486	CLAMP,55MM				1
92151	92151-1256	BOLT,AIR FILTER				1
92170	92170-1194	CLAMP,126MM				1
132	132BA0608	BOLT-FLANGED-SMALL,6X8				1
132A	132BA0614	BOLT-FLANGED-SMALL,6X14				2

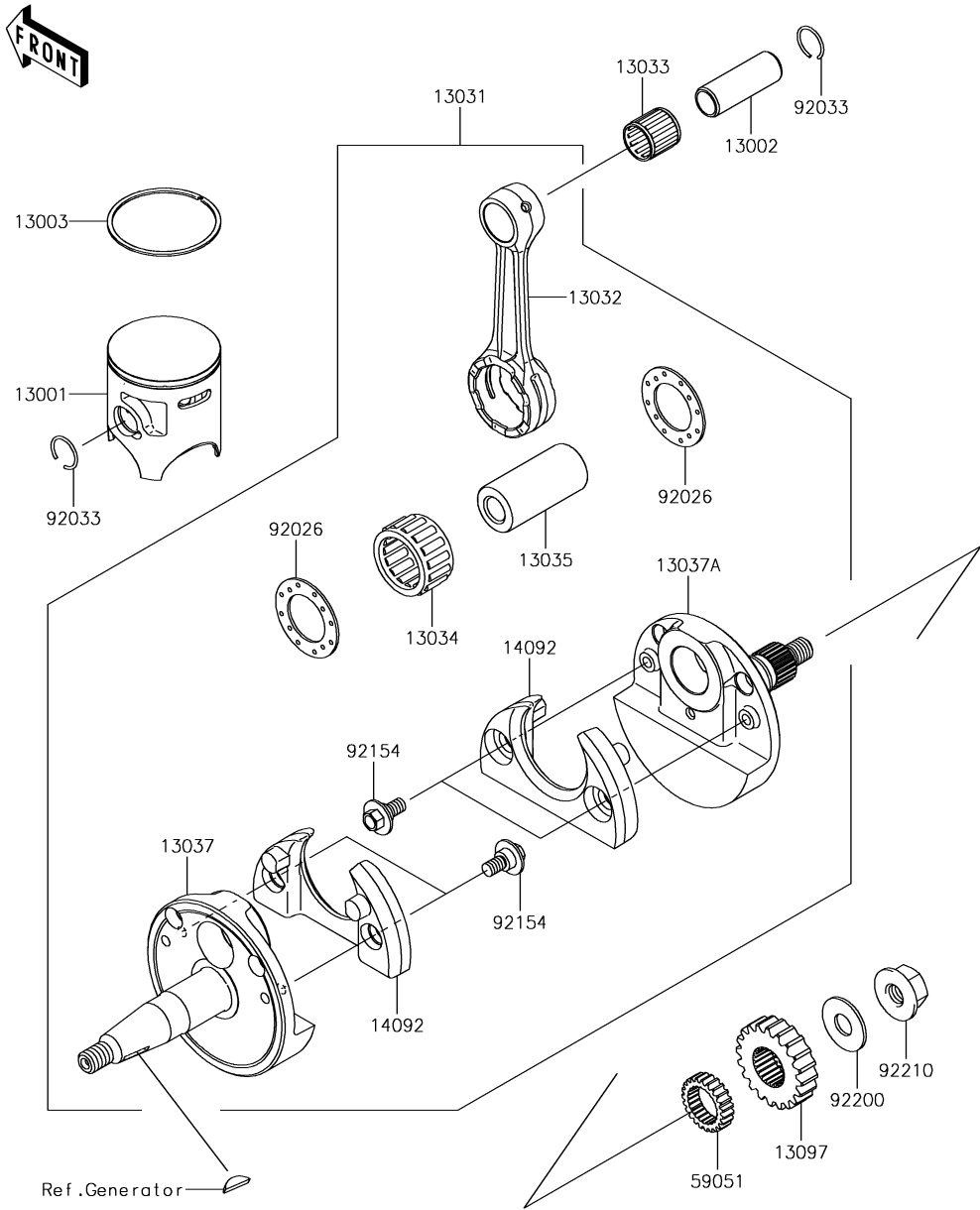




3. Muffler(s)

Ref. No.	Part No.	Description	Spec Code	Quantity			
				'19			
				DKF			
11060	11060-1842	GASKET,EXHAUST HOLDER					1
18020	18020-1272	BAFFLE					1
18046	18046-1559	WOOL					1
18100	18100-0016	BODY-ASSY-MUFFLER					1
18120	18120-0017	CHAMBER-EXHAUST					1
92022	92022-237	WASHER,6.5X22X1.6					2
92027	92027-120	COLLAR,6.8X10X10.5					1
92055	92055-1461	RING-O,BAFFLE PIPE					1
92093	92093-1200	SEAL,MUFFLER JOINT					1
92145	92145-1340	SPRING,EXHAUST CONNECTING					2
92150	92150-1392	BOLT,FLANGED,6X14,WASHER					1
92151	92151-1822	BOLT,FLANGED,6X10					4
92154	92154-0520	BOLT,FLANGED,6X25					1
92160	92160-1176	DAMPER,MUFFLER,FR					1
92160A	92160-1913	DAMPER					1
92210	92210-0630	NUT,FLANGED,6MM					1
132	132BA0612	BOLT-FLANGED-SMALL,6X12					1
670	670E3034	O RING					2

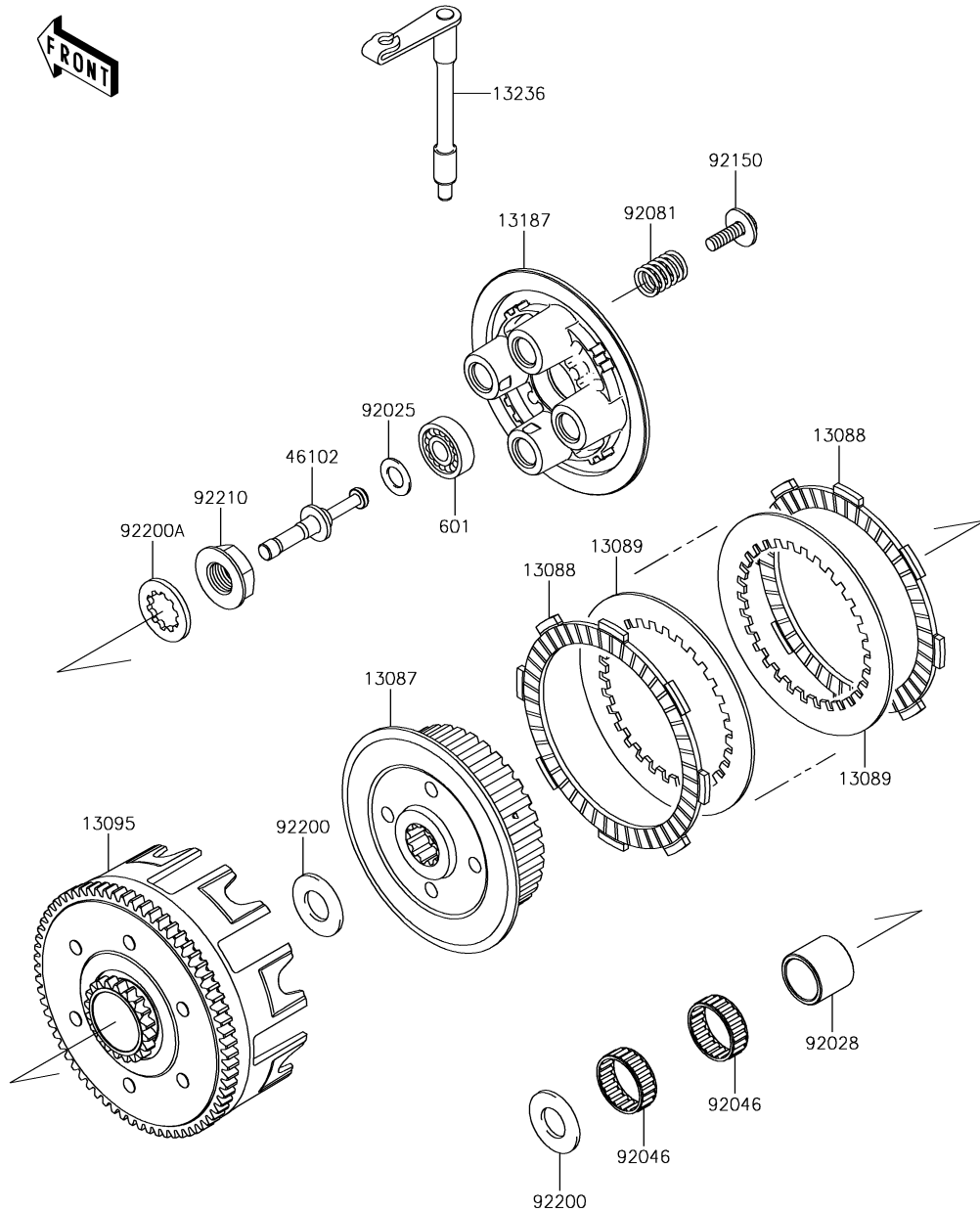
E1320



4. Crankshaft/Piston(s)

Ref. No.	Part No.	Description	Spec Code	Quantity			
				'19			
				DKF			
13001	13001-0744	PISTON-ENGINE			1		
13002	13002-0040	PIN-PISTON			1		
13003	13003-1441	RING-PISTON TOP			1		
13031	13031-0771	CRANKSHAFT-COMP			1		
13032	13032-1230	ROD-CONNECTING			1		
13033	13033-1060	BEARING-SMALL END			1		
13034	13034-0013	BEARING-BIG END,SKTZ 222916EGS			1		
13035	13035-1054	PIN-CRANK			1		
13037	13037-0796	CRANKSHAFT,LH			1		
13037A	13037-0798	CRANKSHAFT,RH			1		
13097	13097-1148	GEAR-PRIMARY SPUR,20T			1		
14092	14092-1081	COVER			2		
59051	59051-1146	GEAR-SPUR,PUMP,23T			1		
92026	92026-1136	SPACER,22.2X37X1.0			2		
92033	92033-0005	RING-SNAP			2		
92154	92154-1175	BOLT,FLANGED			4		
92200	92200-0213	WASHER,10.2X25X1.5			1		
92210	92210-0838	NUT,FLANGED,10MM			1		

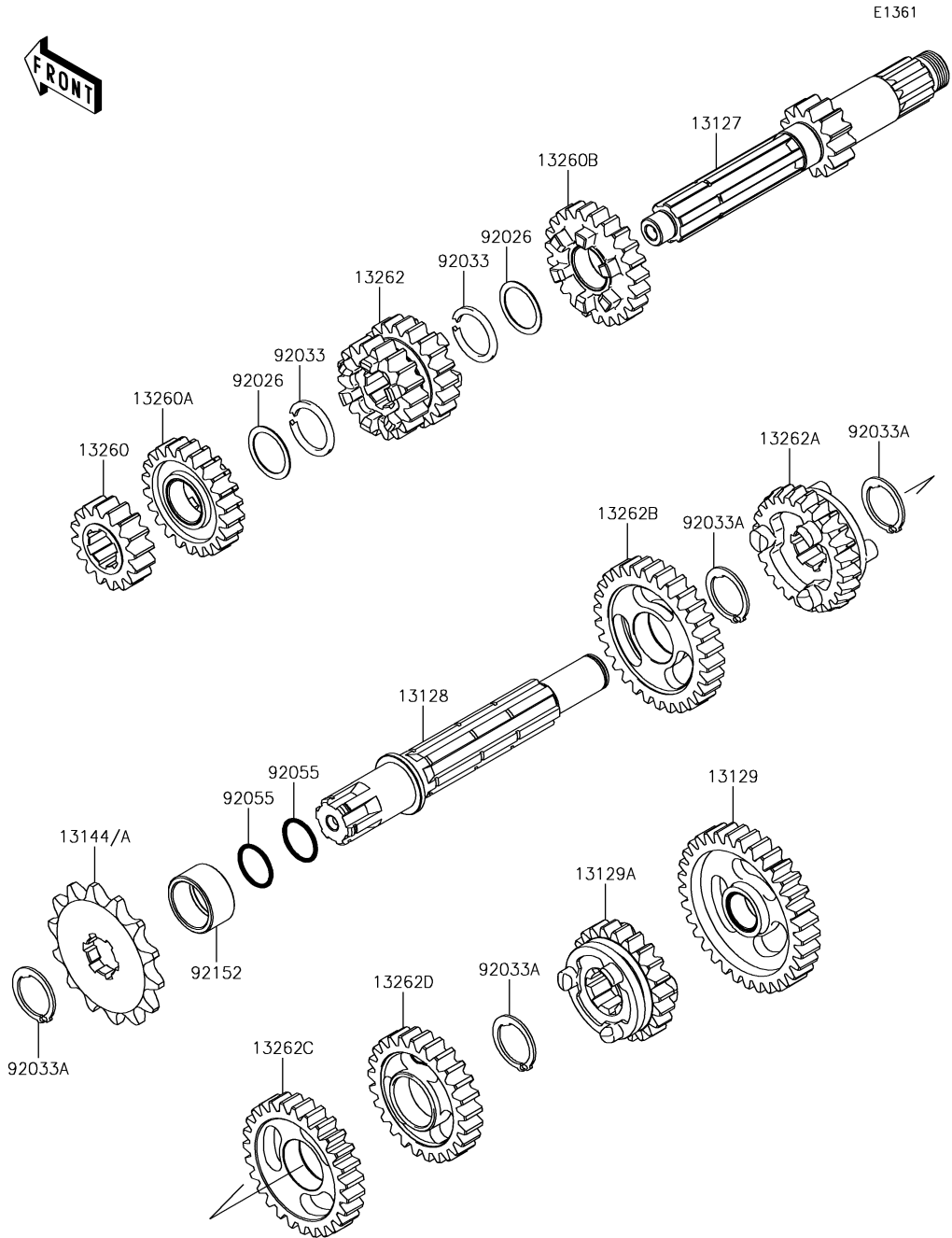
E1350



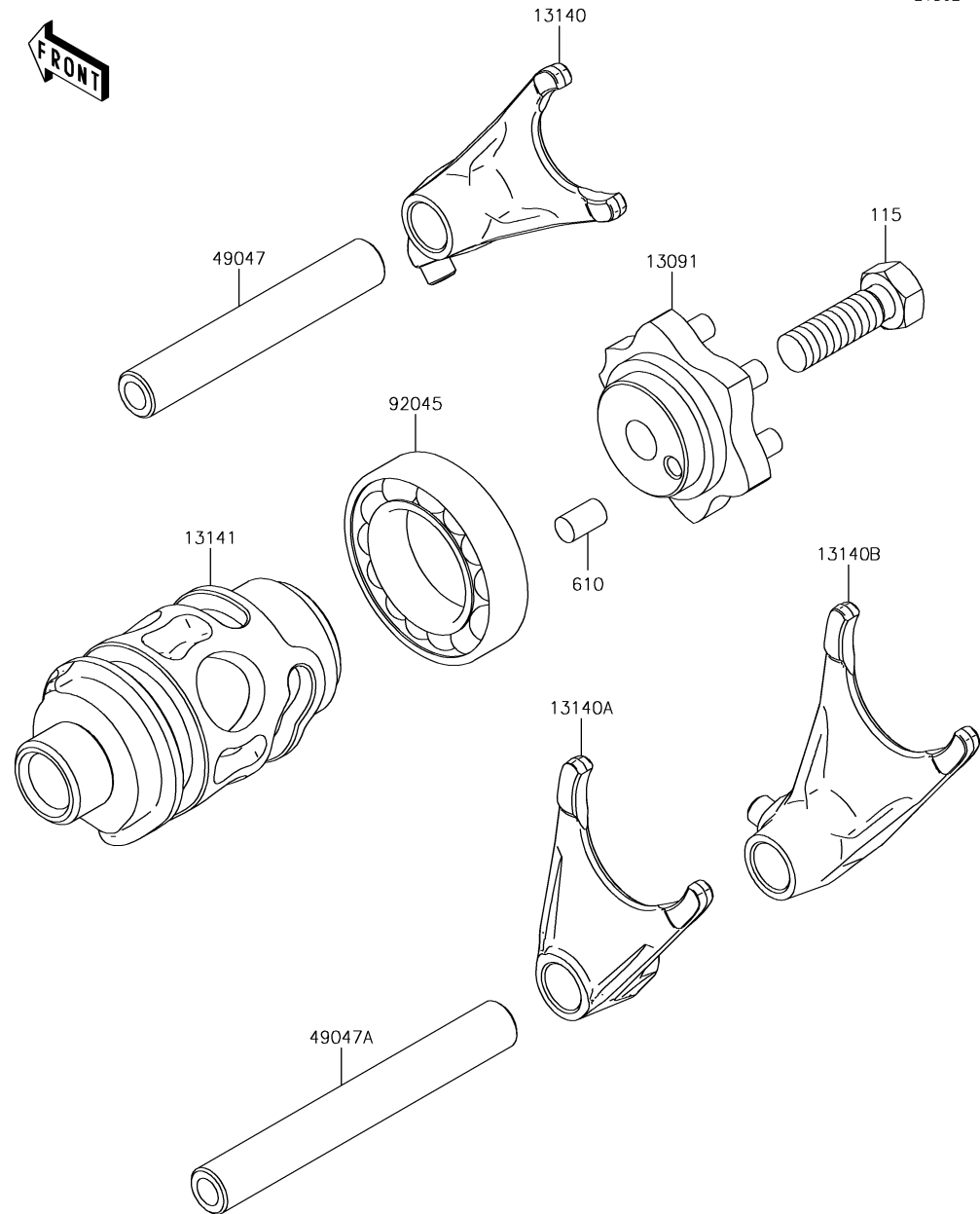
6. Clutch

Ref. No.	Part No.	Description	Spec Code	Quantity			
				'19			
13087	13087-1170	HUB-CLUTCH		1			
13088	13088-1016	PLATE-FRICTION,ID=91		6			
13089	13089-1120	PLATE-CLUTCH		5			
13095	13095-1406	HOUSING-COMP-CLUTCH		1			
13187	13187-1013	PLATE-CLUTCH OPERATING		1			
13236	13236-1298	LEVER-COMP,RELEASE		1			
46102	46102-1409	ROD,CLUTCH RELEASE		1			
92025	92025-1780	SHIM		1			
92028	92028-1811	BUSHING,20X25X21.1		1			
92046	92046-1254	BEARING-NEEDLE,KT252910EG		2			
92081	92081-1492	SPRING,CLUTCH		4			
92150	92150-1715	BOLT,6X20,WASHER		4			
92200	92200-1351	WASHER,20.3X33X2.0		2			
92200A	92200-1352	WASHER,20X30X2.6		1			
92210	92210-1113	NUT,16MM		1			
601	601A6001	BEARING-BALL		1			

7. Transmission



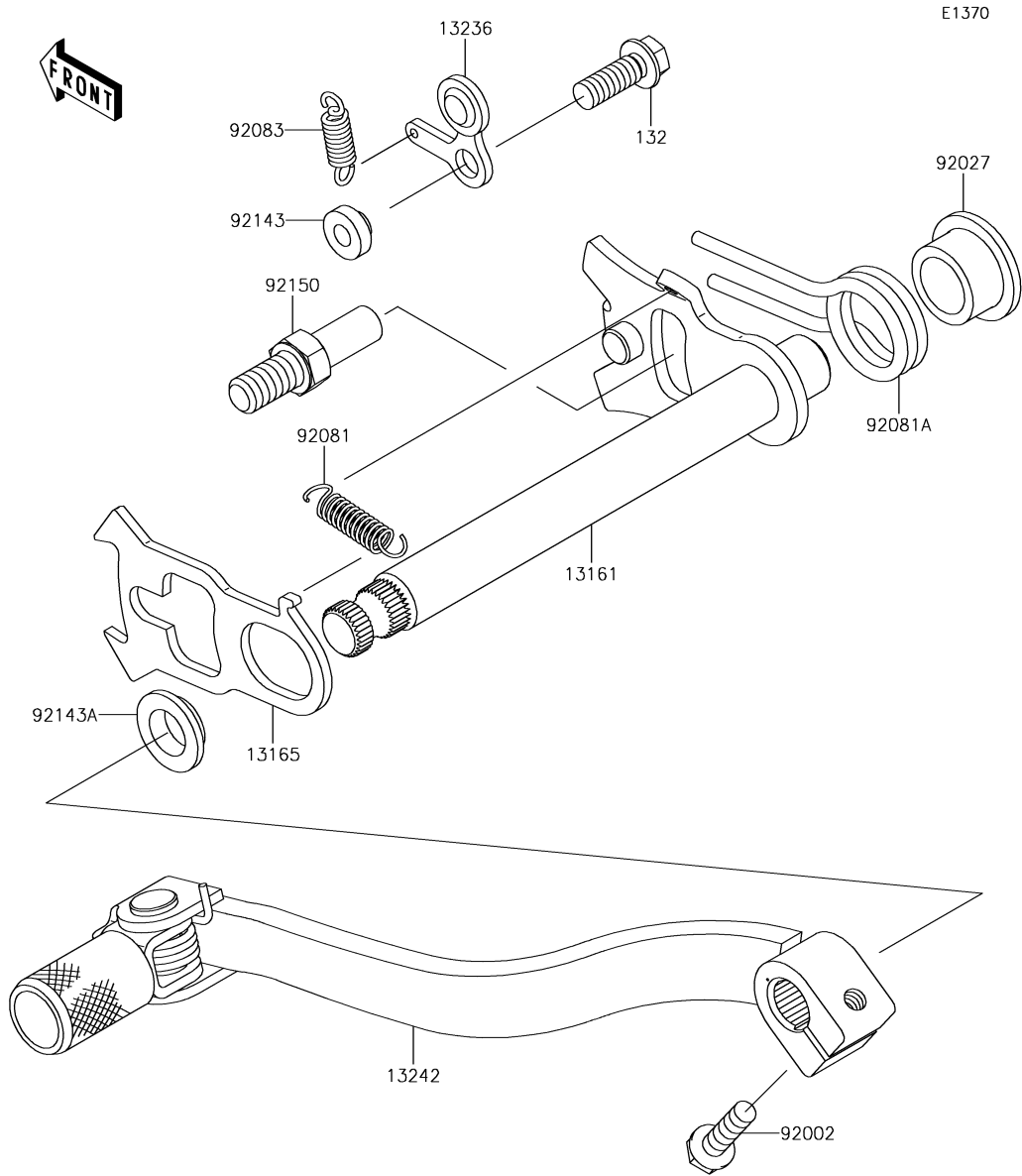
Ref. No.	Part No.	Description	Spec Code	Quantity			
				'19			
				DKF			
13127	13127-1261	SHAFT-TRANSMISSION INPUT,13T					1
13128	13128-0022	SHAFT-TRANSMISSION OUTPUT					1
13129	13129-1725	GEAR,OUTPUT LOW,33T					1
13129A	13129-1730	GEAR,OUTPUT 6TH,22T					1
13144	13144-0564	SPROCKET-OUTPUT,13T					1
13144A	13144-1022	SPROCKET-OUTPUT,14T (OPTION)					1
13260	13260-1014	GEAR,INPUT 2ND,16T					1
13260A	13260-1950	GEAR,INPUT 5TH,22T					1
13260B	13260-1951	GEAR,INPUT 6TH,23T					1
13262	13262-0180	GEAR,INPUT 3RD&4TH,18&20T					1
13262A	13262-0181	GEAR,OUTPUT 5TH,24T					1
13262B	13262-0298	GEAR,OUTPUT 2ND,30T					1
13262C	13262-0299	GEAR,OUTPUT 3RD,27T					1
13262D	13262-0300	GEAR,OUTPUT 4TH,25T					1
92026	92026-1602	SPACER,18X23X0.50					2
92033	92033-028	RING-SNAP					2
92033A	92033-1079	RING-SNAP,18MM					4
92055	92055-022	RING-O,17.5X1.5					2
92152	92152-0195	COLLAR,20X25X12.9					1



E1362

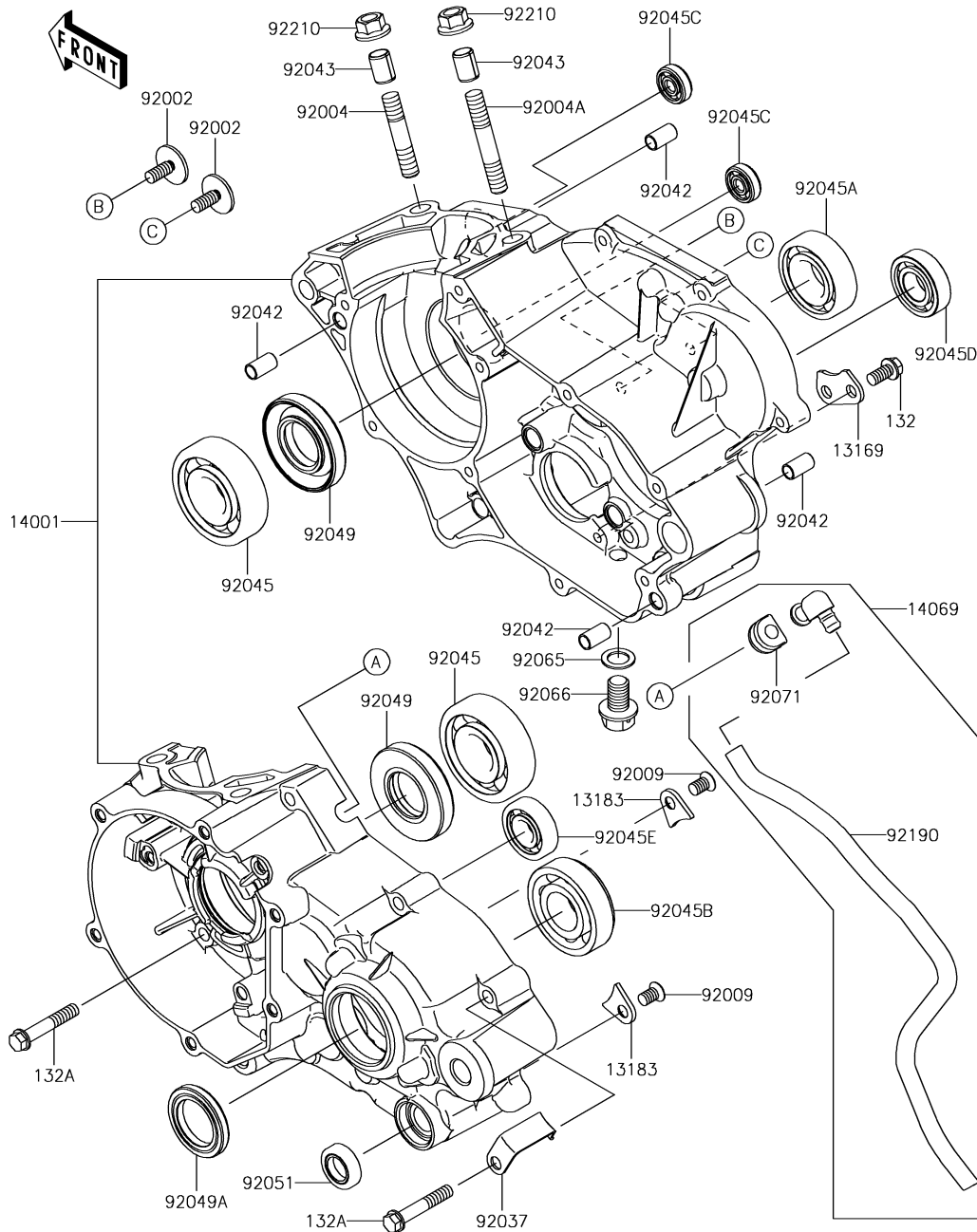
8. Gear Change Drum/Shift Fork(s)

Ref. No.	Part No.	Description	Spec Code	Quantity			
				'19			
13091	13091-1390	HOLDER,CHANGE DRUM				1	
13140	13140-1302	FORK-SHIFT,5TH&6TH				1	
13140A	13140-1303	FORK-SHIFT,2ND&3RD				1	
13140B	13140-1304	FORK-SHIFT,LOW&4TH				1	
13141	13141-1120	DRUM-CHANGE				1	
49047	49047-1063	ROD-SHIFT,5.9X10X64.5				1	
49047A	49047-1064	ROD-SHIFT,5.9X10X81				1	
92045	92045-1058	BEARING-BALL,6905Z				1	
115	115BA0825	BOLT-SMALL-UPSET,8X25				1	
610	610A0408	ROLLER,4X8				1	



Ref. No.	Part No.	Description	Spec Code	Quantity			
				'19			
				DKF			
13161	13161-0571	LEVER-COMP-CHANGE SHAFT					1
13165	13165-1114	PAWL,CHANGE LEVER					1
13236	13236-1152	LEVER-COMP,POSITION					1
13242	13242-0100	LEVER-ASSY-CHANGE,PEDAL					1
92002	92002-1237	BOLT,6X20					1
92027	92027-1940	COLLAR					1
92081	92081-076	SPRING,CHANGE LEVER					1
92081A	92081-1716	SPRING,CHANGE SHAFT RETURN					1
92083	92083-012	SPRING,CHANGE DRUM LEVER					1
92143	92143-1055	COLLAR					1
92143A	92143-1995	COLLAR					1
92150	92150-1467	BOLT,RETURN SPRING					1
132	132BA0616	BOLT-FLANGED-SMALL,6X16					1

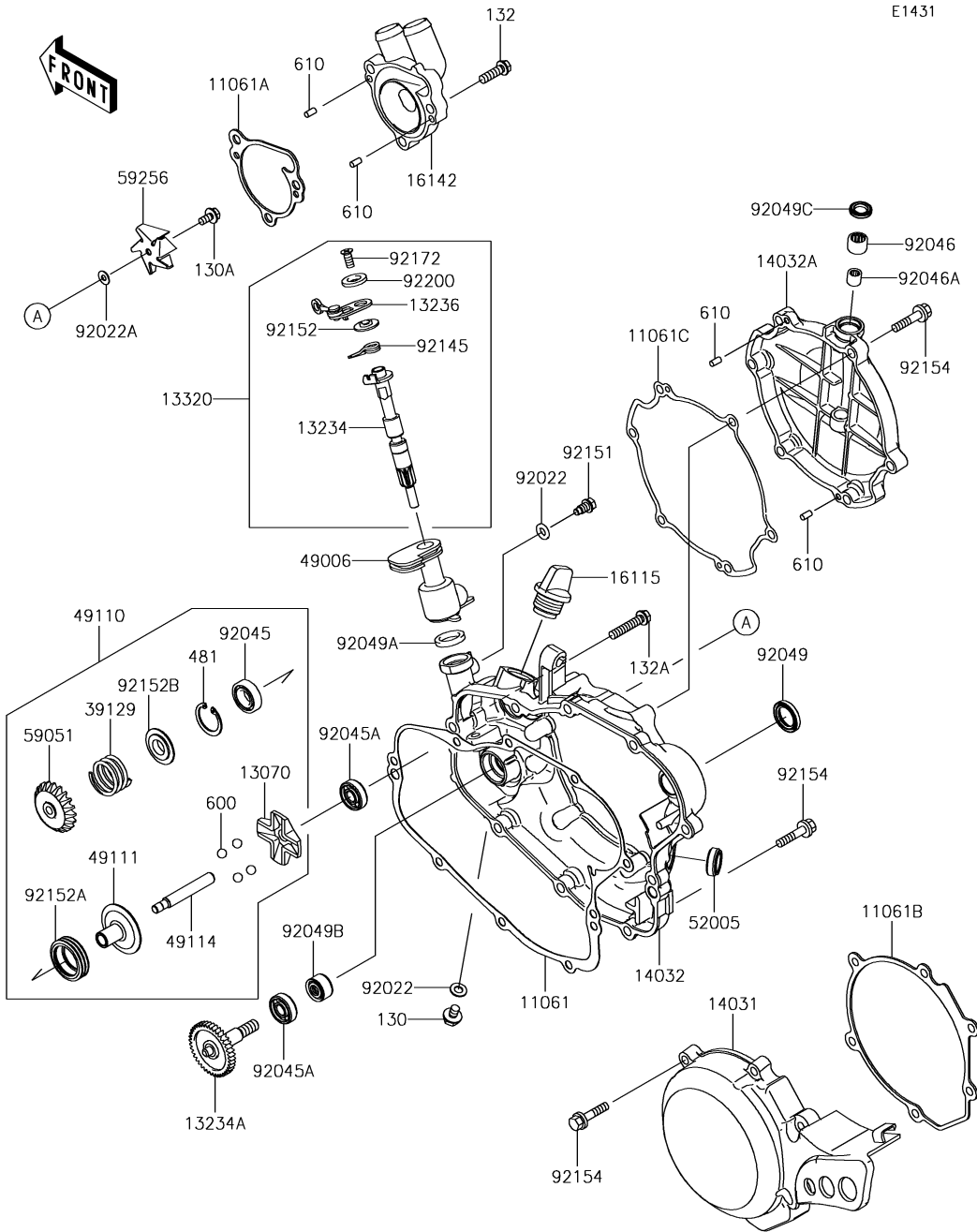
E1411



10. Crankcase

Ref. No.	Part No.	Description	Spec Code	Quantity	
				'19	DKF
13169	13169-012	PLATE,CHANGE DRUM		1	
13183	13183-1182	PLATE		2	
14001	14001-0681	SET-CRANKCASE		1	
14069	14069-1062	BREATHER		1	
92002	92002-1659	BOLT,6X16		2	
92004	92004-1252	STUD,8X28.5		2	
92004A	92004-1254	STUD,8X37		2	
92009	92009-1563	SCREW,6X10		2	
92037	92037-1318	CLAMP,HARNES		1	
92042	92042-007	PIN,DOWEL,6.3X8X14		4	
92043	92043-1264	PIN,8.2X10X14		2	
92045	92045-1059	BEARING-BALL,R-6304C3		2	
92045A	92045-1118	BEARING-BALL,6004TMB		1	
92045B	92045-1226	BEARING-BALL,6204		1	
92045C	92045-1304	BEARING-BALL,626MC3		2	
92045D	92045-1360	BEARING-BALL,TMB002		1	
92045E	92045-1450	BEARING-BALL,16101JRXC3		1	
92049	92049-1188	SEAL-OIL,SD20407GS		2	
92049A	92049-1292	SEAL-OIL,TC25375		1	
92051	92051-005	SEAL-OIL,TB13225.5		1	
92065	92065-058	GASKET,10.5X16X1		1	
92066	92066-1437	PLUG,DRAIN		1	
92071	92071-042	GROMMET,BREATHER		1	
92190	92190-1116	TUBE,6X9X330		1	
92210	92210-0076	NUT,8MM		4	
132	132BA0612	BOLT-FLANGED-SMALL,6X12		2	
132A	132BA0635	BOLT-FLANGED-SMALL,6X35		9	

E1431



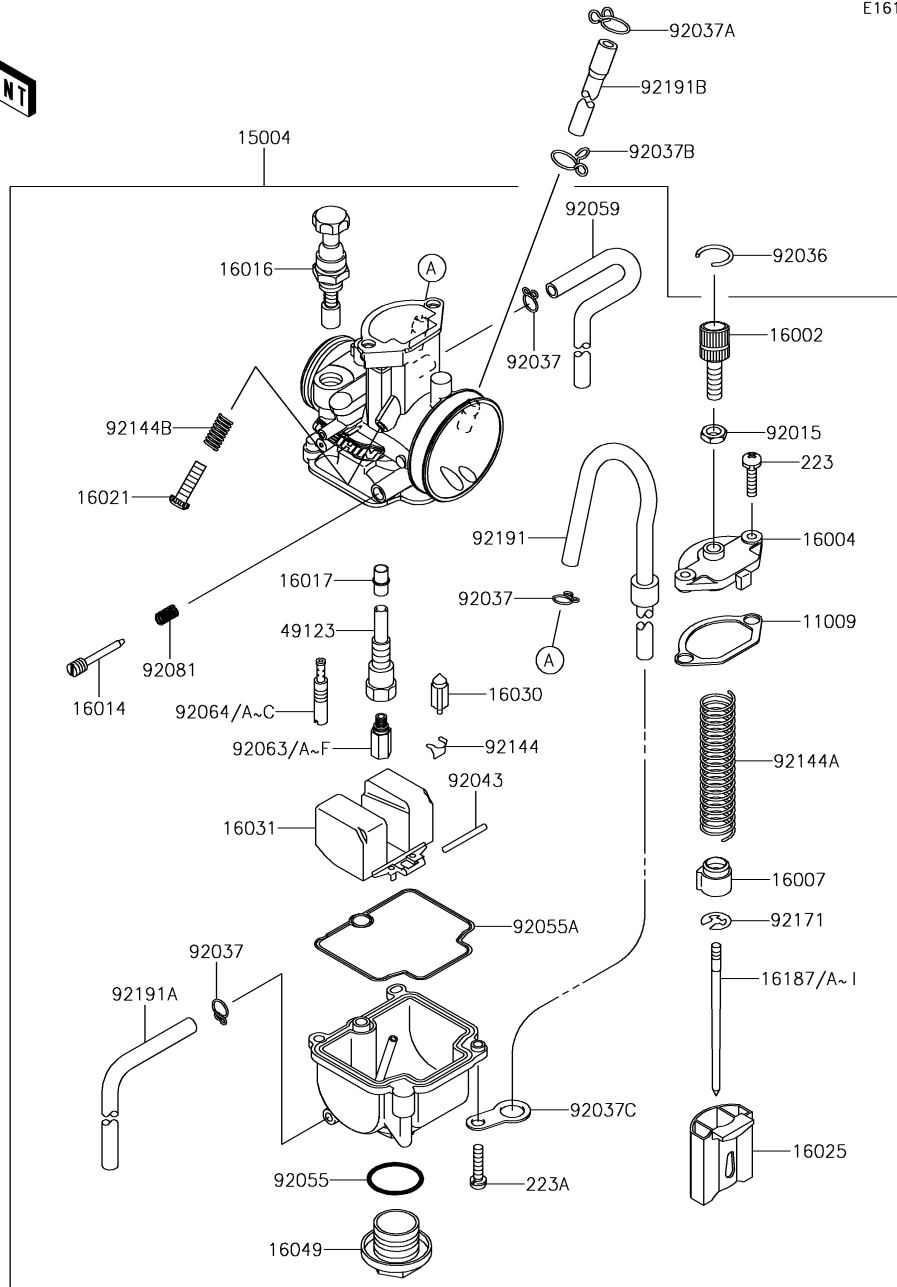
11-1. Engine Cover(s)

Ref. No.	Part No.	Description	Spec Code	Quantity			
				'19			
130	130AA0608	BOLT-FLANGED,6X8				1	
130A	130CA0510	BOLT-FLANGED,5X10				1	
132	132BA0620	BOLT-FLANGED-SMALL,6X20				3	
132A	132BA0630	BOLT-FLANGED-SMALL,6X30				1	
481	481J2400	CIRCLIP-TYPE-C,24MM				1	
600	600A1000	BALL-STEEL,5/16				4	
610	610A0408	ROLLER,4X8				4	

12. Carburetor



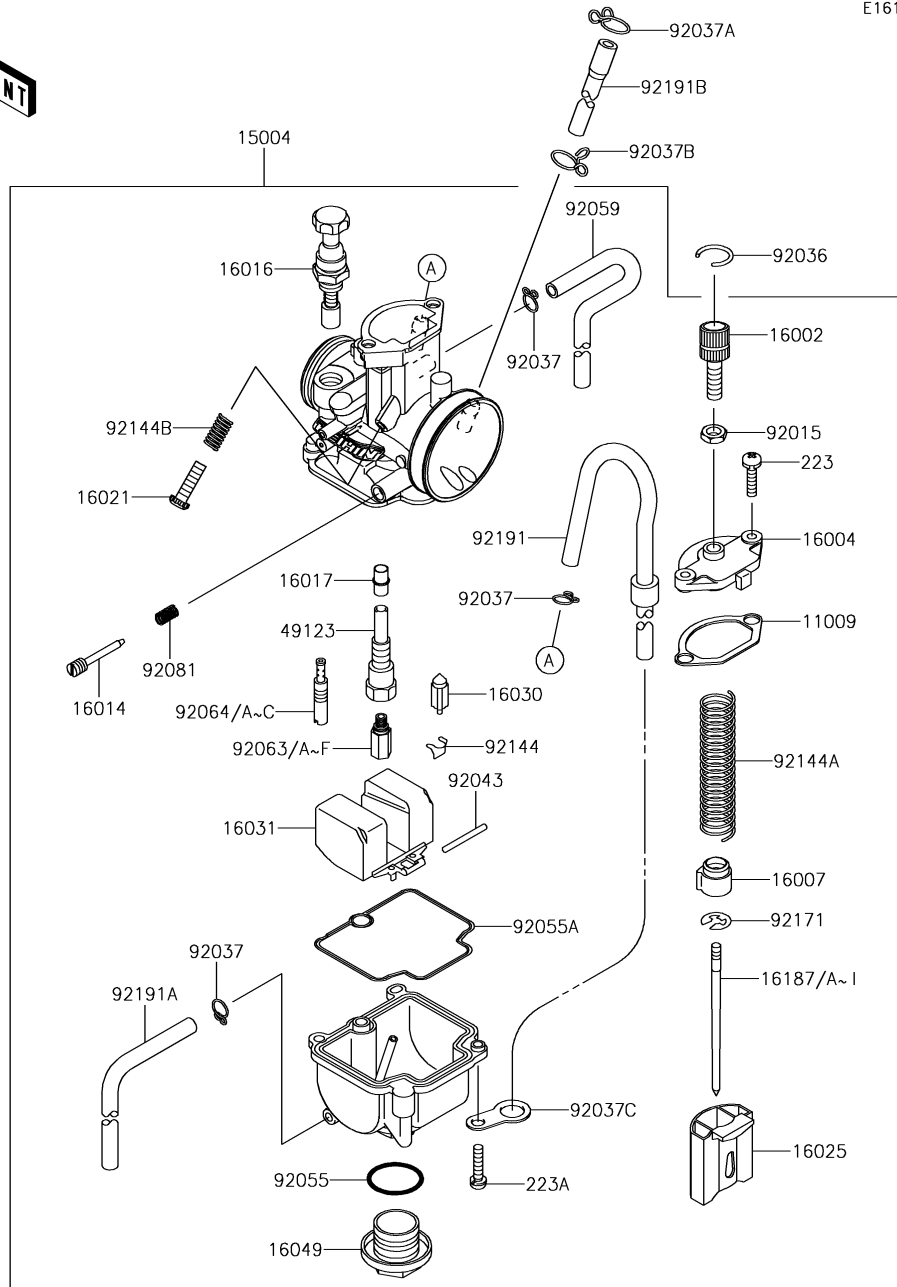
E1611



Ref. No.	Part No.	Description	Spec Code	Quantity			
				'19			
				DKF			
11009	11009-1759	GASKET,MIXING CHAMBER					1
15004	15004-0856	CARBURETOR-ASSY,PWK28					1
16002	16002-1056	ADJUSTER-CABLE					1
16004	16004-1065	CAP-CHAMBER,MIXING					1
16007	16007-1155	SEAT-SPRING,THROTTLE VALVE					1
16014	16014-1058	SCREW-PILOT AIR					1
16016	16016-1075	PLUNGER,STARTER					1
16017	16017-1431	JET-NEEDLE					1
16021	16021-1161	SCREW-THROTTLE STOP					1
16025	16025-1220	VALVE-THROTTLE,CA3.5					1
16030	16030-1064	VALVE-FLOAT					1
16031	16031-1065	FLOAT					1
16049	16049-1051	COVER-MAIN JET					1
16187	16187-0557	NEEDLE-JET,NRJA (OPTION)					1
16187A	16187-0558	NEEDLE-JET,NRJB (OPTION)					1
16187B	16187-0559	NEEDLE-JET,NRJC (OPTION)					1
16187C	16187-0560	NEEDLE-JET,NRJD (OPTION)					1
16187D	16187-0561	NEEDLE-JET,NRJE (OPTION)					1
16187E	16187-0562	NEEDLE-JET,NRKA (OPTION)					1
16187F	16187-0563	NEEDLE-JET,NRKB (OPTION)					1
16187G	16187-0564	NEEDLE-JET,NRKC (OPTION)					1
16187H	16187-0565	NEEDLE-JET,NRKD (OPTION)					1
16187I	16187-0566	NEEDLE-JET,NRKE (OPTION)					1
49123	49123-1054	HOLDER-MAIN JET					1
92015	92015-1574	NUT,CABLE ADJUST LOCK					1
92036	92036-018	RING-SNAP					1
92037	92037-1396	CLAMP,TUBE					3
92037A	92037-147	CLAMP,TUBE					1
92037B	92037-1712	CLAMP					1
92037C	92037-1969	CLAMP,HOSE					1
92043	92043-1207	PIN,FLOAT					1

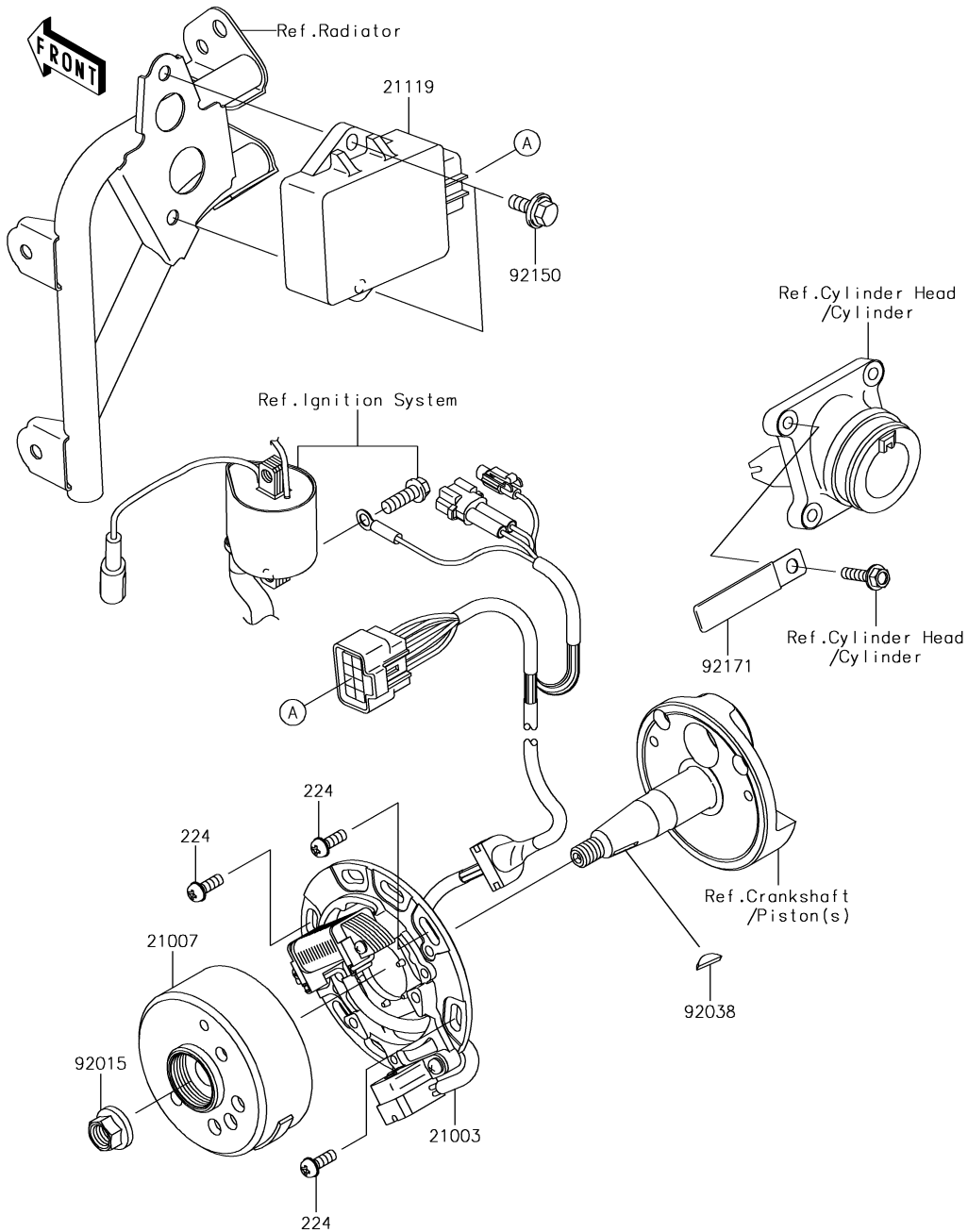


E1611



Ref. No.	Part No.	Description	Spec Code	Quantity			
				'19			
92055	92055-1167	RING-O,MAIN JET COVER				1	
92055A	92055-1389	RING-O,FLOAT CHAMBER				1	
92059	92059-1941	TUBE,4X7X360				1	
92063	92063-1338	JET-MAIN,#135 (OPTION)				1	
92063A	92063-1359	JET-MAIN,#138 (OPTION)				1	
92063B	92063-1360	JET-MAIN,#140				1	
92063C	92063-1361	JET-MAIN,#142 (OPTION)				1	
92063D	92063-1362	JET-MAIN,#145 (OPTION)				1	
92063E	92063-1363	JET-MAIN,#148 (OPTION)				1	
92063F	92063-1364	JET-MAIN,#150 (OPTION)				1	
92064	92064-1138	JET-PILOT,#35 (OPTION)				1	
92064A	92064-1139	JET-PILOT,#38				1	
92064B	92064-1140	JET-PILOT,#40 (OPTION)				1	
92064C	92064-1141	JET-PILOT,#42 (OPTION)				1	
92081	92081-1555	SPRING,ADJUST SCREW				1	
92144	92144-1178	SPRING,FLOAT VALVE				1	
92144A	92144-1566	SPRING,THROTTLE VALVE				1	
92144B	92144-1782	SPRING,THROTTLE STOP SCREW				1	
92171	92171-1323	CLAMP				1	
92191	92191-1243	TUBE,4X7X560				1	
92191A	92191-1591	TUBE,4X7X420				1	
92191B	92191-1610	TUBE				1	
223	223AB0414	SCREW-PAN-WS-CROS,4X14				2	
223A	223AB0416	SCREW-PAN-WS-CROS,4X16				2	

E1810



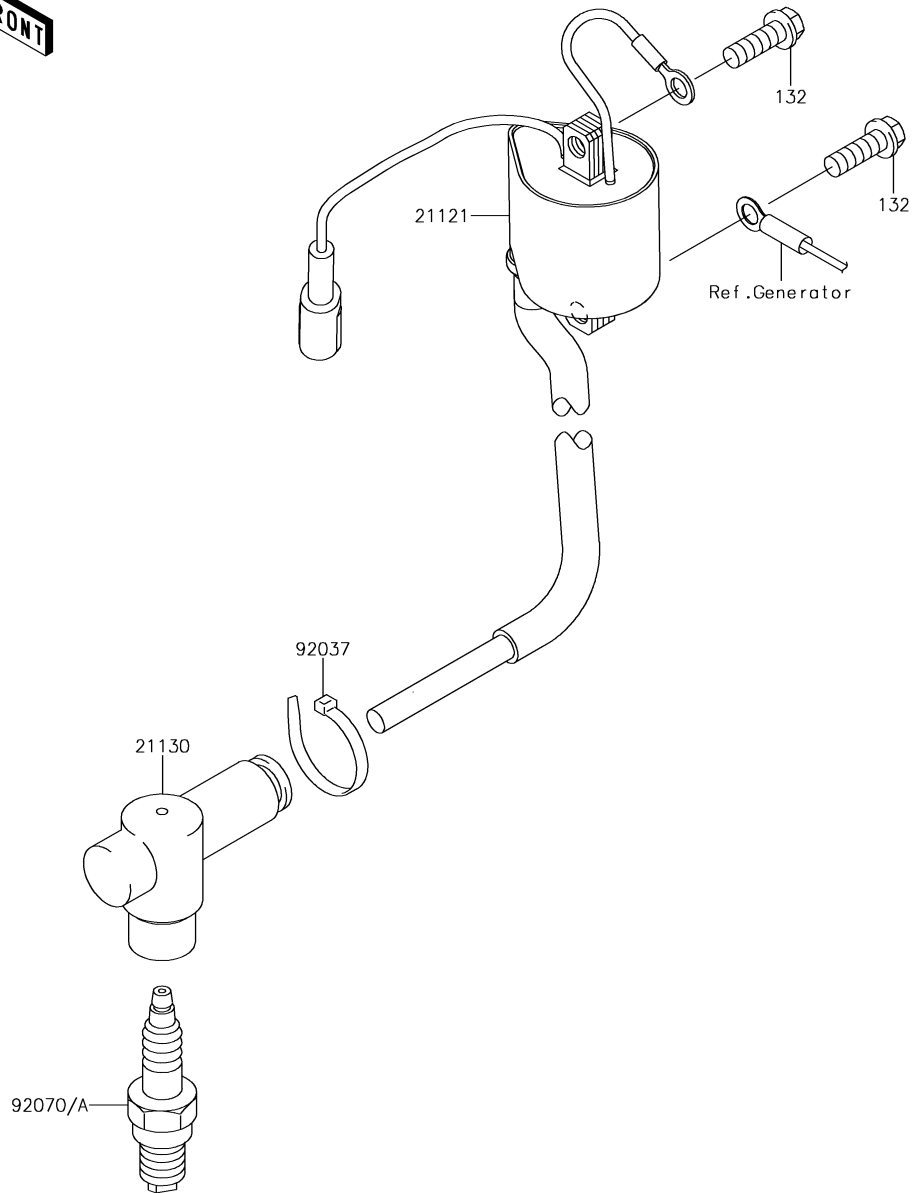
13. Generator

Ref. No.	Part No.	Description	Spec Code	Quantity			
				'19			
21003	21003-0150	STATOR				1	
21007	21007-0073	ROTOR				1	
21119	21119-0587	IGNITER				1	
92015	92015-077	NUT, FLANGED, 10MM				1	
92038	92038-001	KEY, WOODRUFF				1	
92150	92150-1506	BOLT, FLANGED, 6X16				2	
92171	92171-0652	CLAMP, L=60				1	
224	224AA0614	SCREW-PAN-WP-CROS, 6X14				3	

14. Ignition System

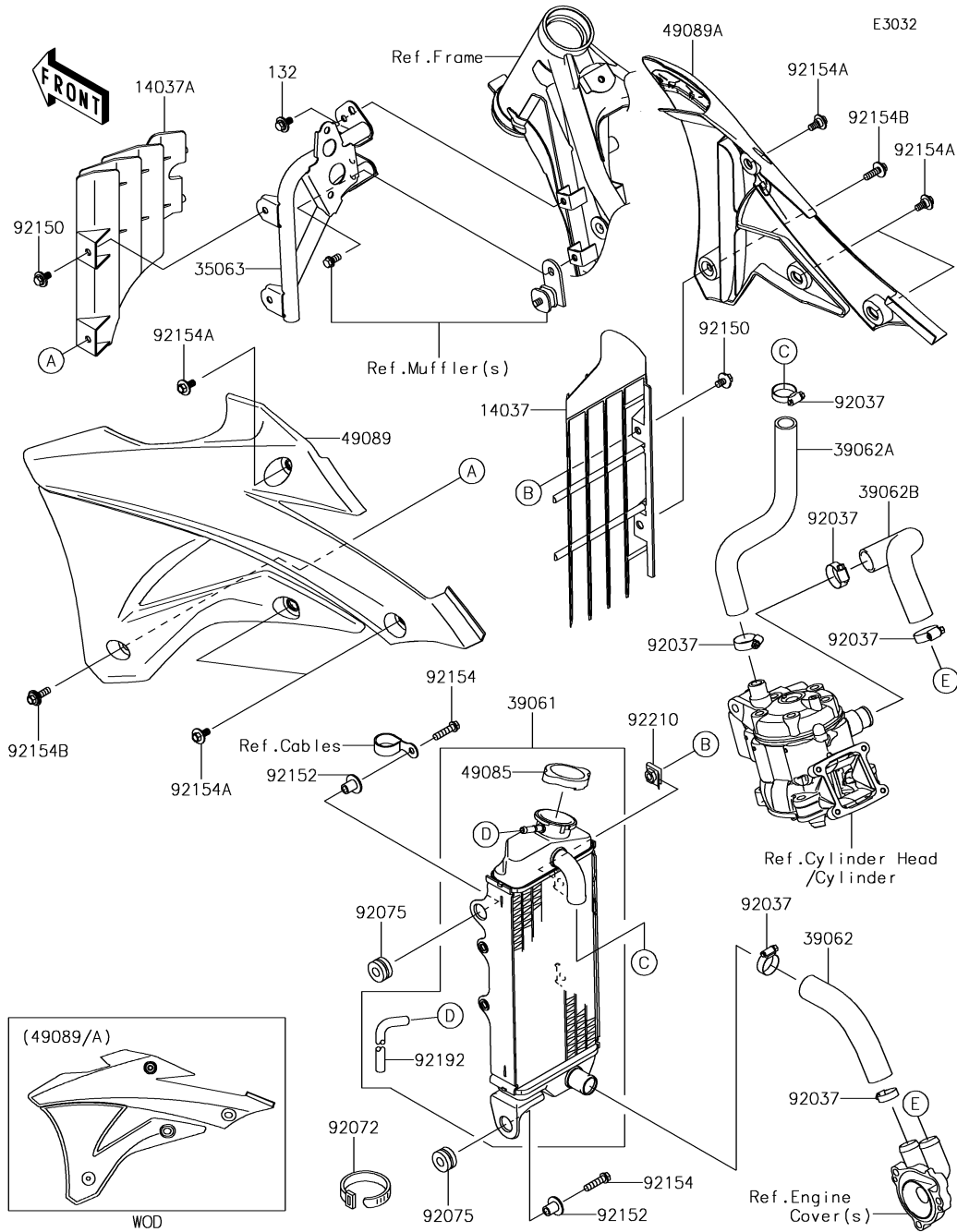


E1830



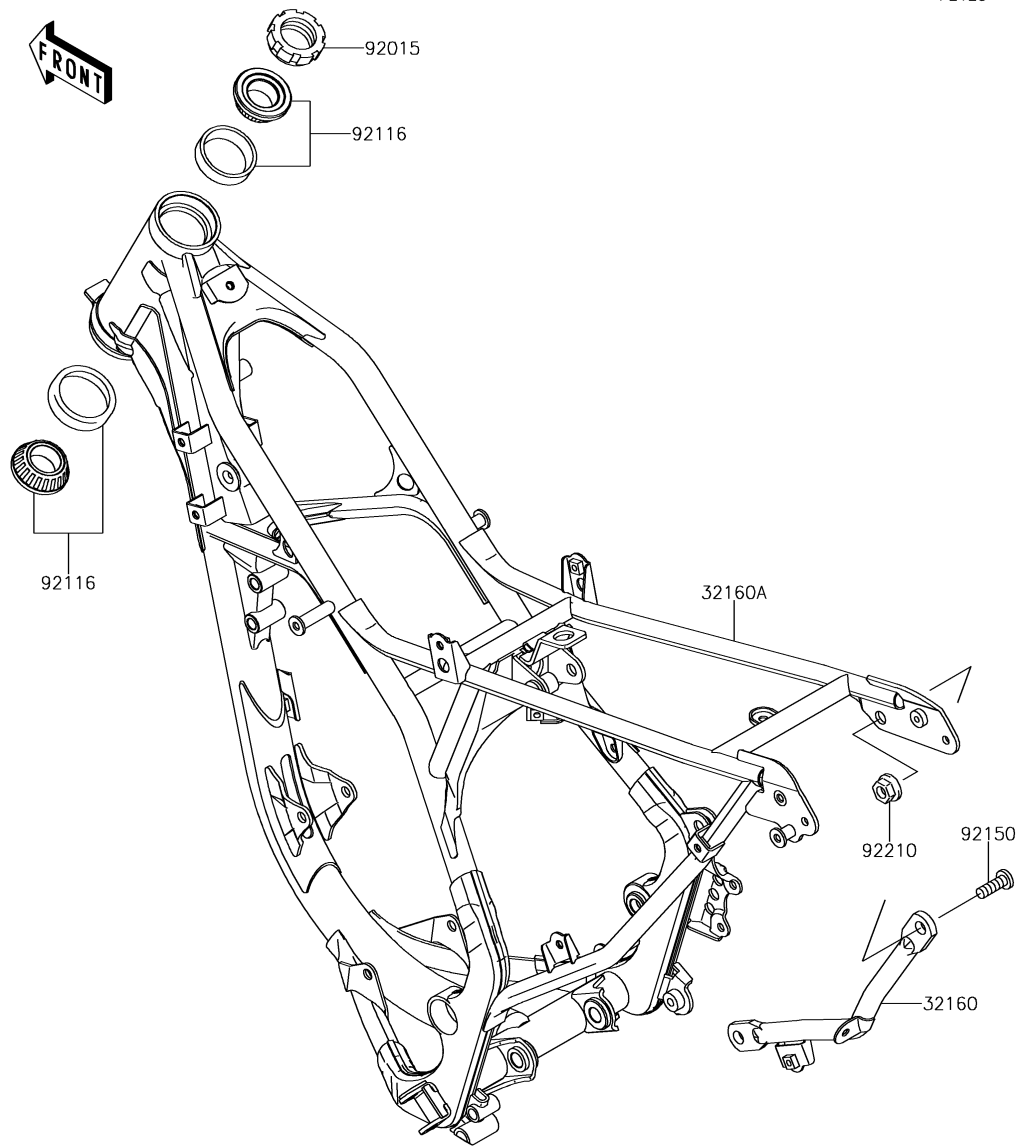
Ref. No.	Part No.	Description	Spec Code	Quantity			
				'19			
				DKF			

21121	21121-0722	COIL-IGNITION					1
21130	21130-1077	CAP-SPARK PLUG					1
92037	92037-1173	CLAMP					1
92070	92070-1228	PLUG-SPARK,BR9EVX(NGK),SOLID (OPTION)					1
92070A	92070-1241	PLUG-SPARK,R6252K-105NGK,SOLID					1
132	132BA0618	BOLT-FLANGED-SMALL,6X18					2



15. Radiator

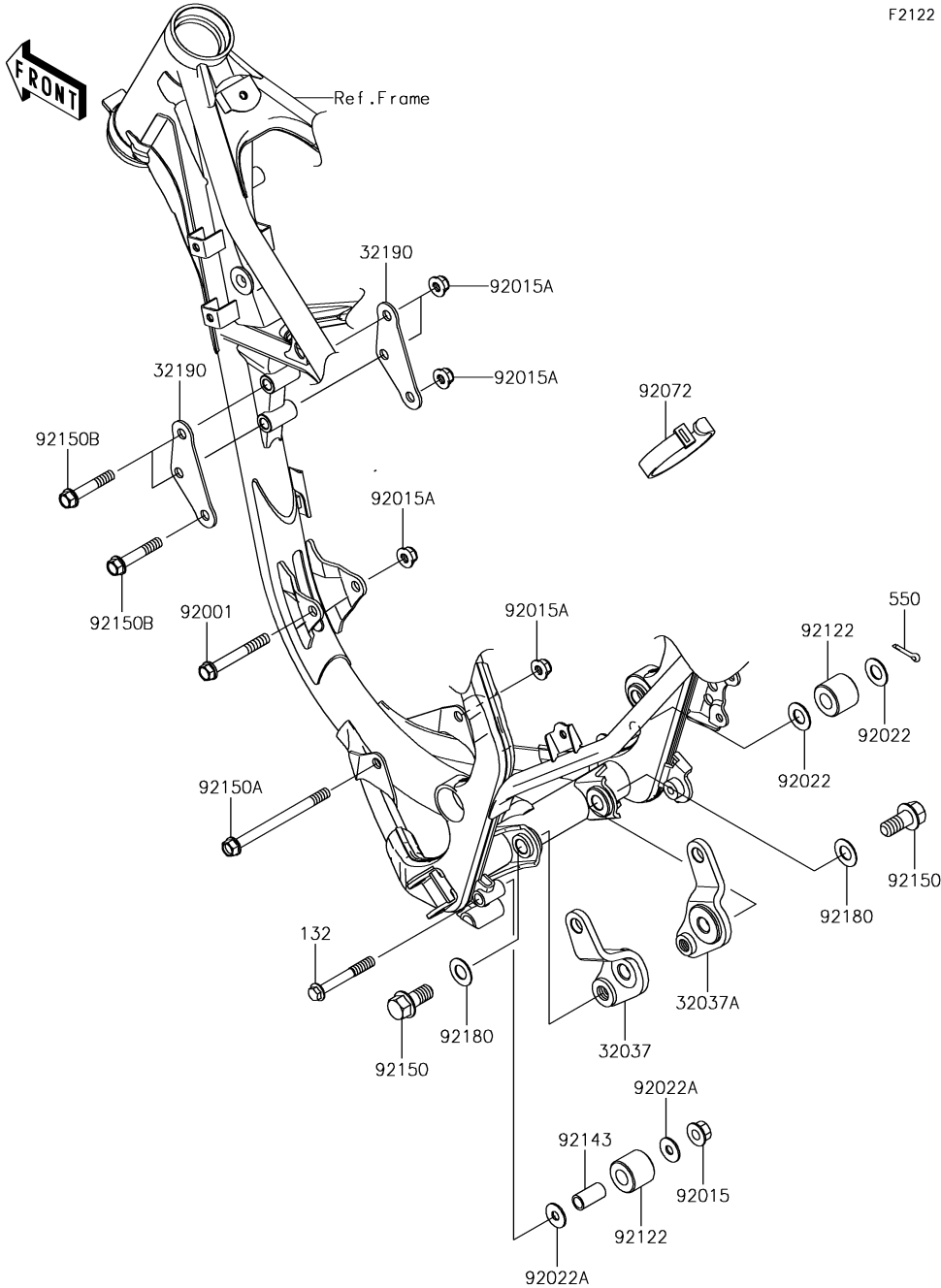
Ref. No.	Part No.	Description	Spec Code	Quantity	
				'19	DKF
14037	14037-0748-6C	SCREEN,RH,EBONY		1	
14037A	14037-1282-6C	SCREEN,LH,EBONY		1	
35063	35063-1137	STAY		1	
39061	39061-0592	RADIATOR-ASSY		1	
39062	39062-0646	HOSE-COOLING,RADIATOR-PUMP		1	
39062A	39062-1425	HOSE-COOLING,HEAD-RADIATOR		1	
39062B	39062-1712	HOSE-COOLING,CYLINDER PUMP		1	
49085	49085-0006	CAP-ASSY-PRESSURE		1	
49089	49089-0816-25M	SHROUD-ENGINE,LH,UP GRN+LO EBO		1	
49089A	49089-0817-25M	SHROUD-ENGINE,RH,UP GRN+LO EBO		1	
92037	92037-1589	CLAMP,COOLING HOSE		6	
92072	92072-056	BAND,L=186		1	
92075	92075-209	DAMPER		2	
92150	92150-1435	BOLT,6X12		2	
92152	92152-0666	COLLAR		2	
92154	92154-0520	BOLT,FLANGED,6X25		2	
92154A	92154-0546	BOLT,FLANGED,6X9		6	
92154B	92154-1268	BOLT,FLANGED,6X20		2	
92192	92192-1334	TUBE,6X9X700		1	
92210	92210-0867	NUT,CLIP,6MM		2	
132	132BA0612	BOLT-FLANGED-SMALL,6X12		1	



F2120

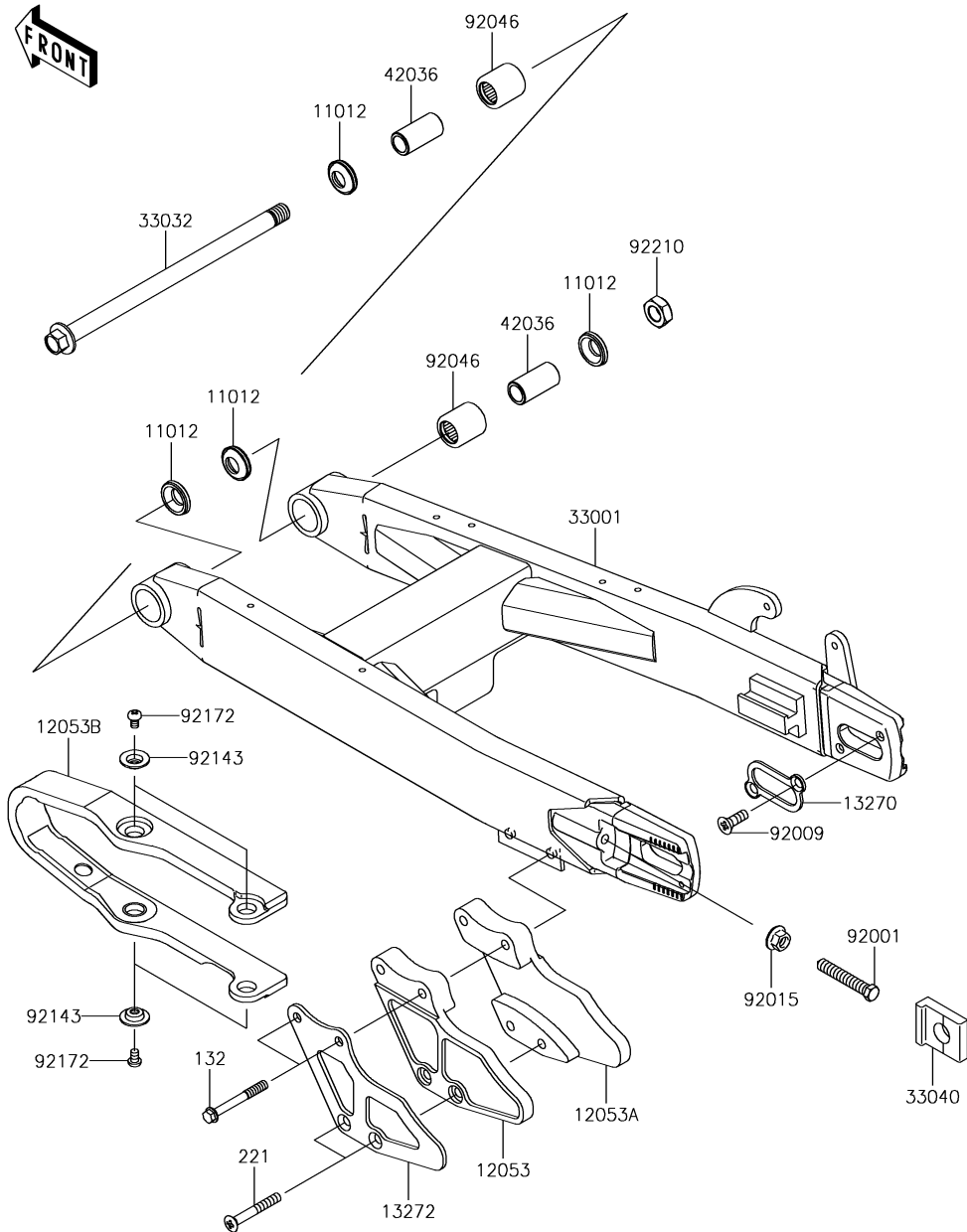
16. Frame

Ref. No.	Part No.	Description	Spec Code	Quantity			
				'19			
32160	32160-0670-18R	FRAME-COMP,SUB,F.S.BLACK					1
32160A	32160-0677-18R	FRAME-COMP,MAIN,F.S.BLACK					1
92015	92015-1684	NUT,STEERING STEM,25MM					1
92116	92116-1065	BEARING-ROLLER,H1-CAP32005JRRS					2
92150	92150-1221	BOLT,SOCKET,10X23					2
92210	92210-1080	NUT,LOCK,FLANGED,10MM					2



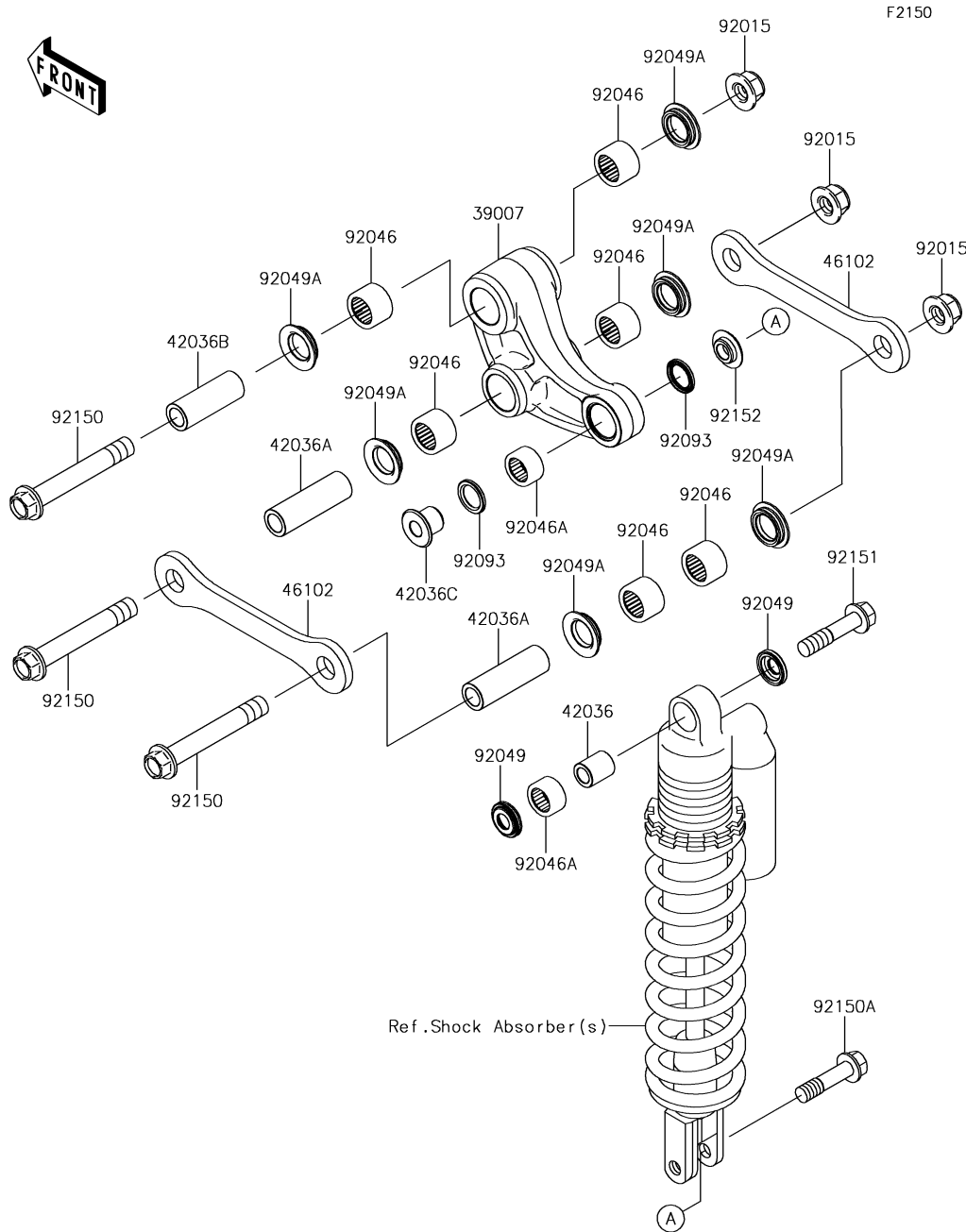
Ref. No.	Part No.	Description	Spec Code	Quantity			
				'19			
				DKF			
32037	32037-1552	BRACKET-SHOCKABSORBER					1
32037A	32037-1553	BRACKET-SHOCKABSORBER					1
32190	32190-1119	BRACKET-ENGINE,HEAD					2
92001	92001-1006	BOLT,FLANGED,8X63					1
92015	92015-1406	NUT,FLANGED,8MM					1
92015A	92015-1432	NUT,8MM					5
92022	92022-107	WASHER					2
92022A	92022-1561	WASHER,8.5X20X1.6					2
92072	92072-1293	BAND,L=140					4
92122	92122-1213	ROLLER,CHAIN GUIDE					2
92143	92143-1432	COLLAR,9.5X12.7X25					1
92150	92150-1359	BOLT,FLANGED,12X27					2
92150A	92150-1482	BOLT,FLANGED,8X105					1
92150B	92150-1487	BOLT,FLANGED,8X45					3
92180	92180-1060	SHIM,12.5X24X0.5					2
132	132BA0860	BOLT-FLANGED-SMALL,8X60					1
550	550AA2518	PIN-COTTER,2.5X18					1

F2141



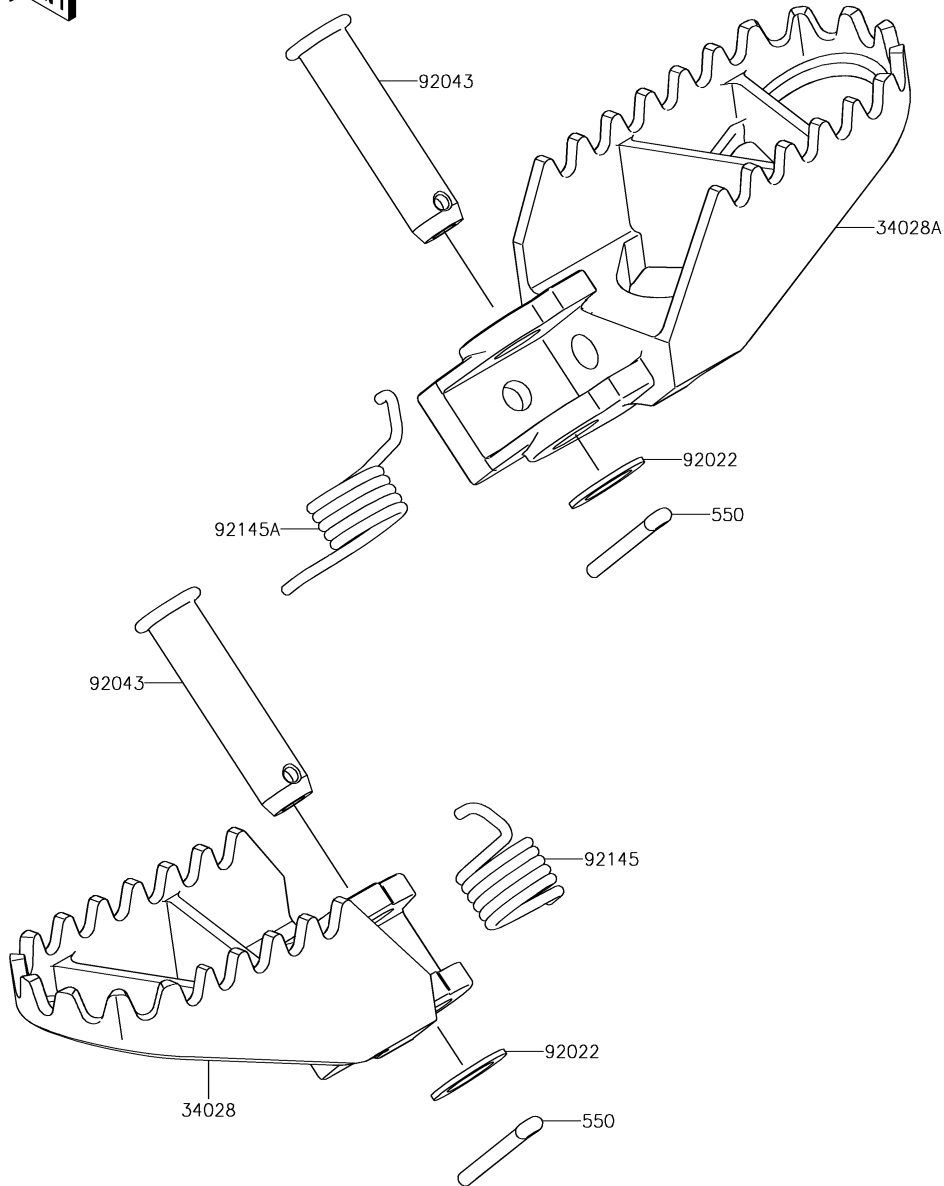
18. Swingarm

Ref. No.	Part No.	Description	Spec Code	Quantity			
				'19			
				DKF			
11012	11012-1263	CAP			4		
12053	12053-0209	GUIDE-CHAIN,RR,LH			1		
12053A	12053-0210	GUIDE-CHAIN,RR,RH			1		
12053B	12053-1414	GUIDE-CHAIN,FR			1		
13270	13270-1899	PLATE			2		
13272	13272-1446	PLATE,GUIDE CHAIN			1		
33001	33001-0611	ARM-COMP-SWING			1		
33032	33032-1161	SHAFT-SWING ARM			1		
33040	33040-0039	ADJUSTER-CHAIN			2		
42036	42036-1067	SLEEVE,SWING ARM,L=34			2		
92001	92001-1179	BOLT,8X46			2		
92009	92009-1828	SCREW,5X10			4		
92015	92015-1014	NUT,FLANGED,8MM			2		
92046	92046-1046	BEARING-NEEDLE			2		
92143	92143-1676	COLLAR			4		
92172	92172-0119	SCREW,5X8			4		
92210	92210-1249	NUT,LOCK,12MM			1		
132	132BA0650	BOLT-FLANGED-SMALL,6X50			2		
221	221AA0645	SCREW-CSK-CROS,6X45			2		



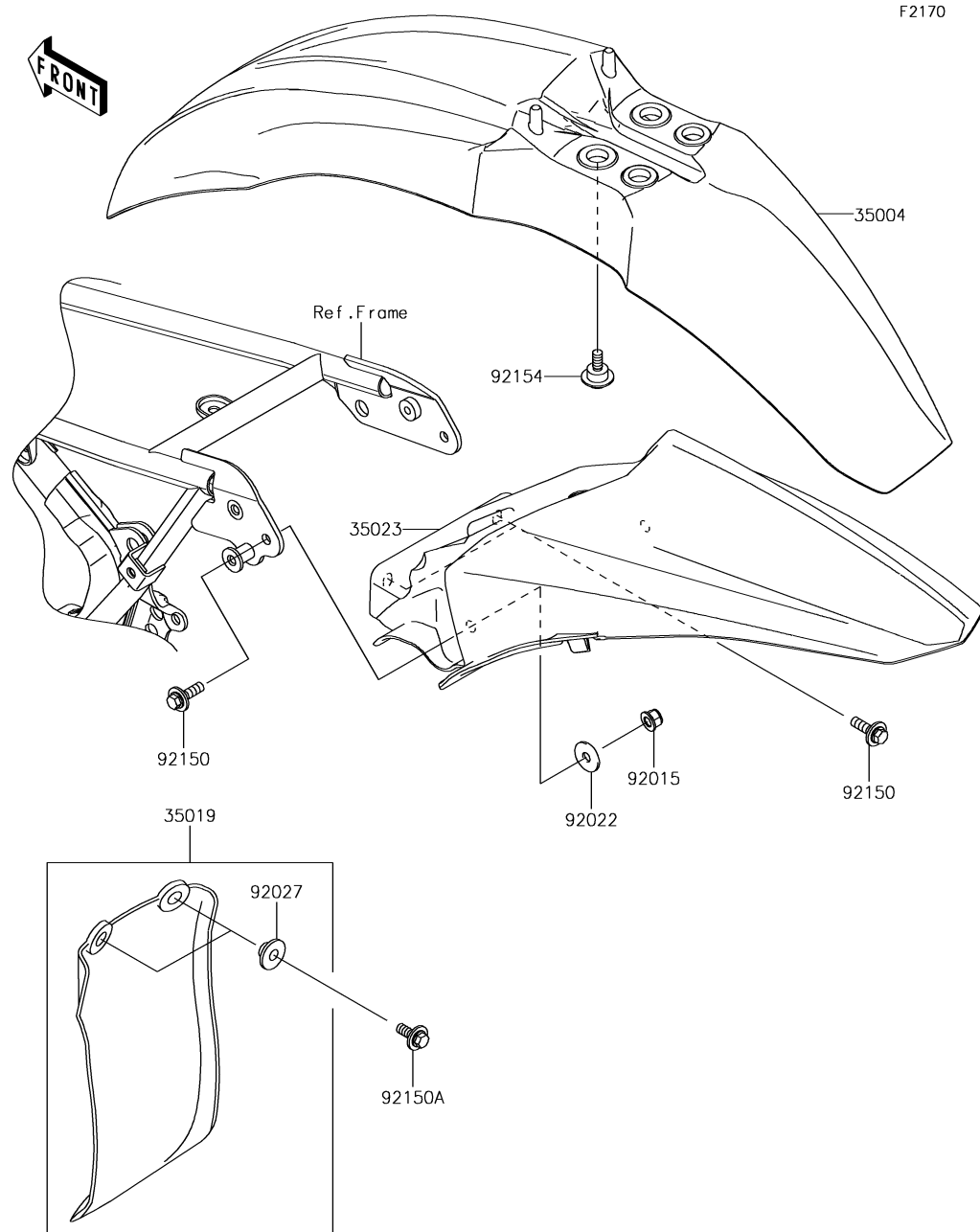
Ref. No.	Part No.	Description	Spec Code	Quantity			
				'19			
				DKF			
39007	39007-1262	ARM-SUSP,UNI TRAK					1
42036	42036-0030	SLEEVE,10X16X19.3					1
42036A	42036-1273	SLEEVE,12X18X57					2
42036B	42036-1274	SLEEVE,12X18X49					1
42036C	42036-1351	SLEEVE					1
46102	46102-1291	ROD,SUSPENSION					2
92015	92015-1433	NUT,LOCK,FLANGED,12MM					3
92046	92046-1144	BEARING-NEEDLE,18BM2416					6
92046A	92046-1192	BEARING-NEEDLE,16BM2212					2
92049	92049-0069	SEAL-OIL					2
92049A	92049-1328	SEAL-OIL					6
92093	92093-1436	SEAL					2
92150	92150-1412	BOLT,FLANGED,12X83					3
92150A	92150-1711	BOLT,FLANGED,10X40					1
92151	92151-1413	BOLT,FLANGED,10X45					1
92152	92152-1139	COLLAR					1

F2160



20. Footrests

Ref. No.	Part No.	Description	Spec Code	Quantity			
				'19			
34028	34028-1498-CE	STEP,LH,SILVER					1
34028A	34028-1499-CE	STEP,RH,SILVER					1
92022	92022-1829	WASHER,10.2X16X1					2
92043	92043-1643	PIN,10X37.5					2
92145	92145-0951	SPRING,STEP,LH					1
92145A	92145-0952	SPRING,STEP,RH					1
550	550S3020	PIN-COTTER,3.0X20					2



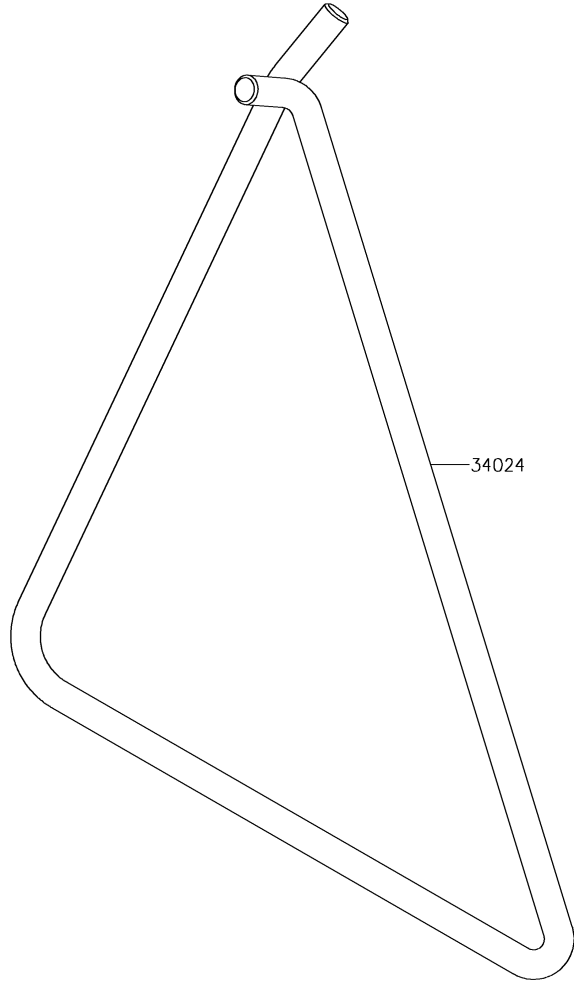
21. Fenders

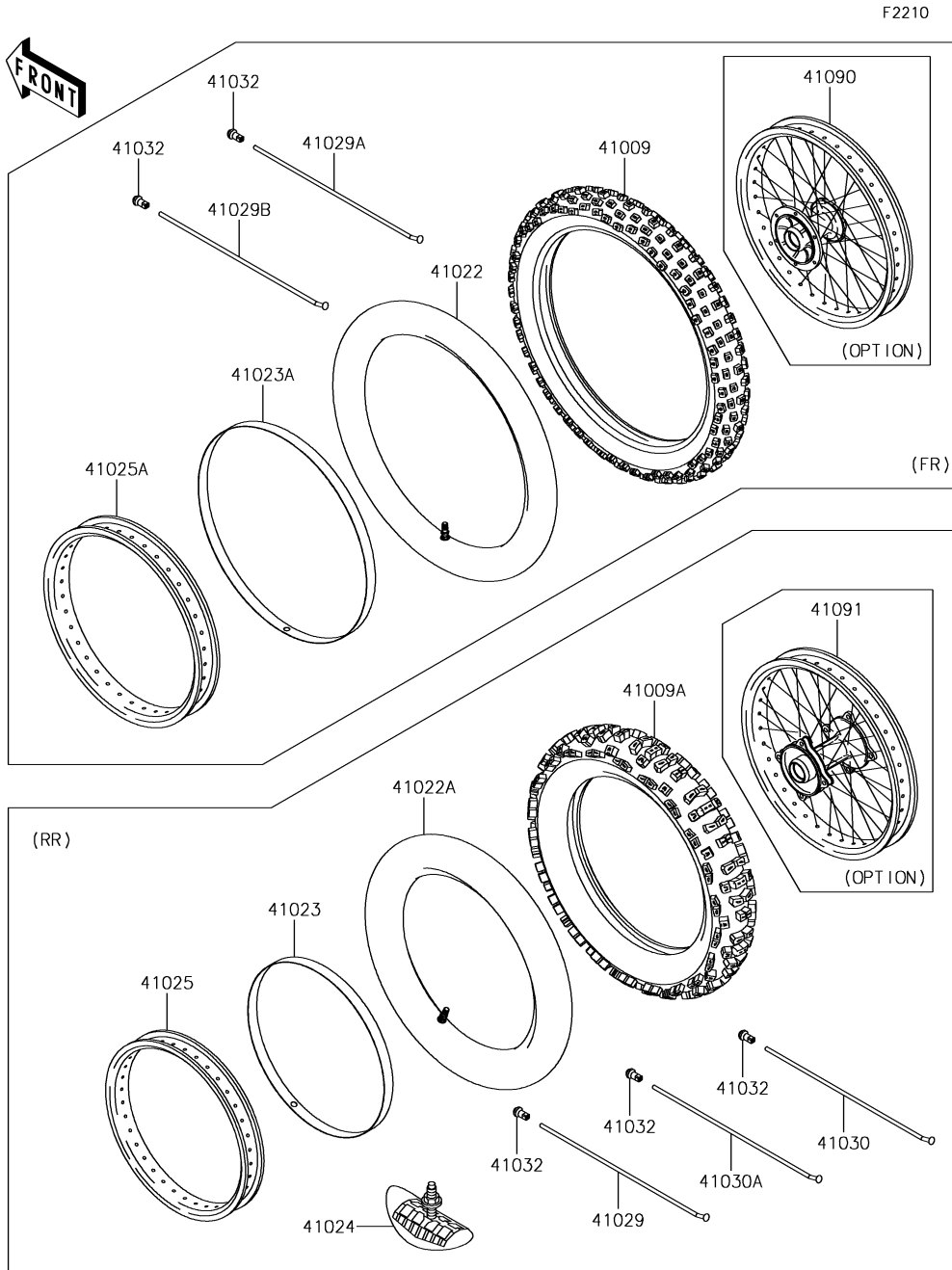
Ref. No.	Part No.	Description	Spec Code	Quantity			
				'19			
35004	35004-0329-290	FENDER-FRONT,L.GREEN					1
35019	35019-0080	FLAP,REAR FENDER					1
35023	35023-0374-290	FENDER-REAR,L.GREEN					1
92015	92015-1339	NUT,LOCK,FLANGED,6MM					2
92022	92022-125	WASHER,6.5X20X1.6					2
92027	92027-1757	COLLAR					2
92150	92150-1339	BOLT,FLANGED,6X20					4
92150A	92150-1506	BOLT,FLANGED,6X16					2
92154	92154-0972	BOLT,6X18.5					4

22. Stand(s)

F2190

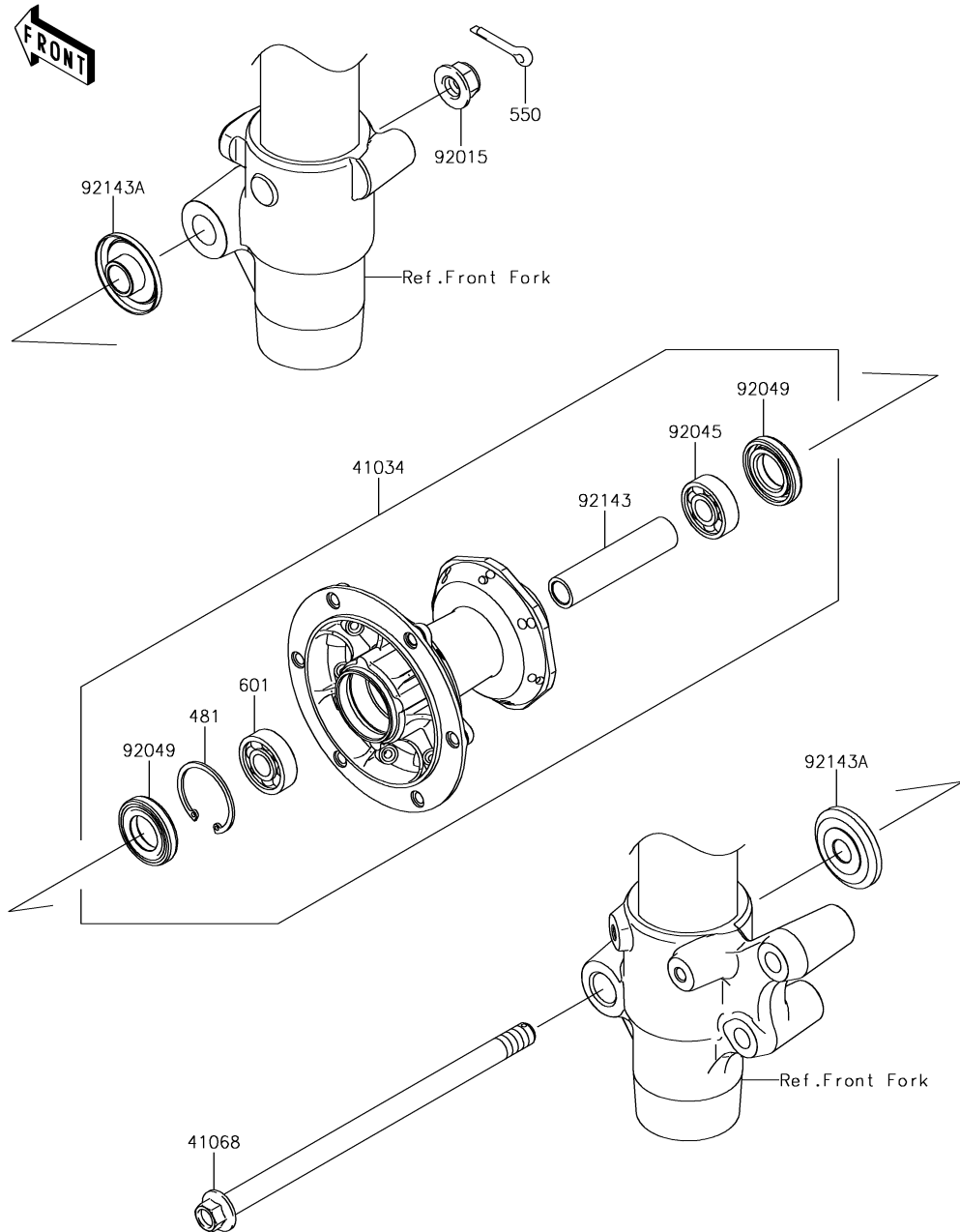
Ref. No.	Part No.	Description	Spec Code	Quantity			
				'19			
34024	34024-1404-18R	STAND-SIDE,F.S.BLACK					1





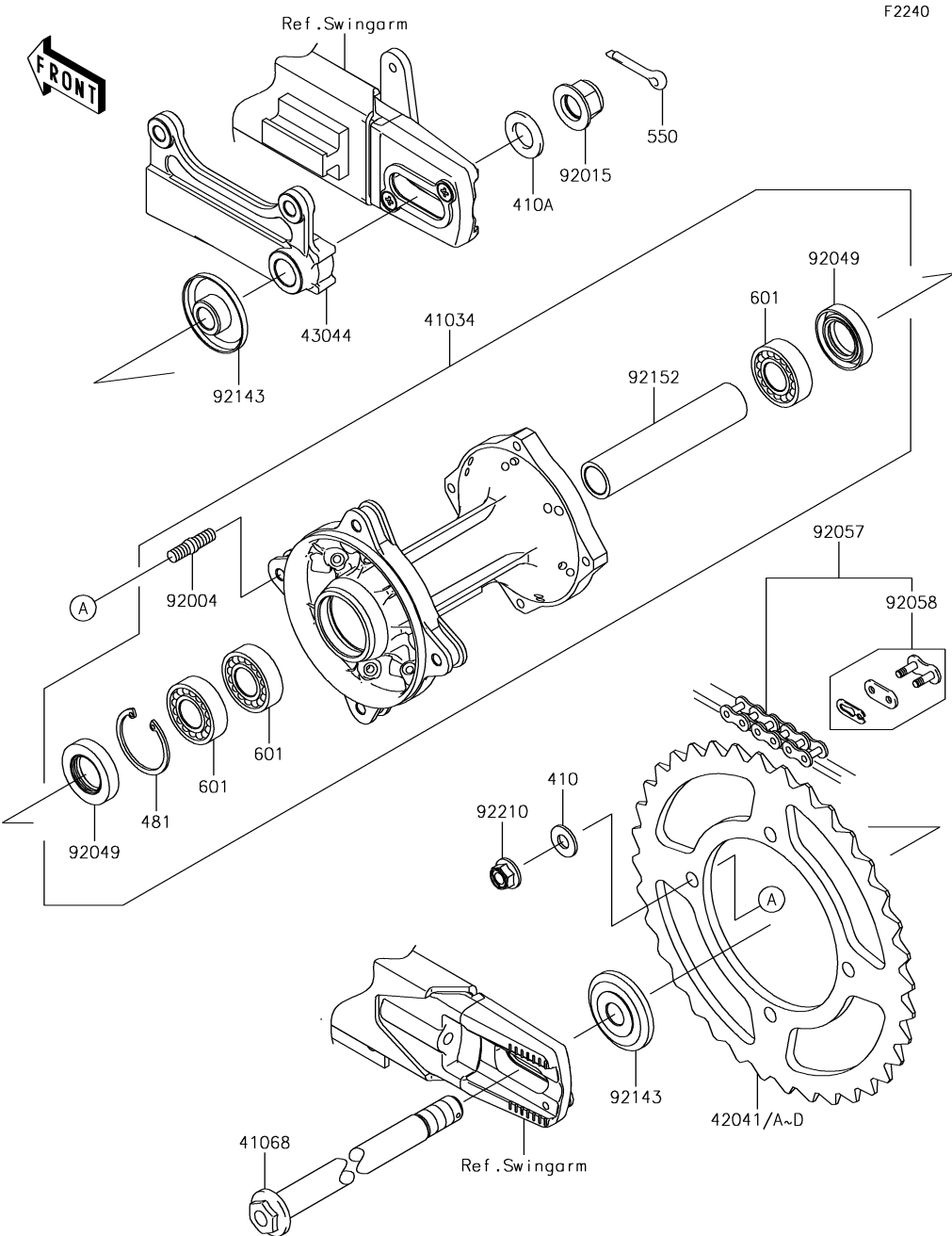
Ref. No.	Part No.	Description	Spec Code	Quantity			
				'19			
				DKF			
41009	41009-0555	TIRE,FR,70/100-19,MX51F(D)					1
41009A	41009-0556	TIRE,RR,90/100-16,MX51(D)					1
41022	41022-1121	TUBE-TIRE,FR,70/100-19(D)					1
41022A	41022-1122	TUBE-TIRE,RR,90/100-16(D)					1
41023	41023-1072	BAND-RIM,RR,90/100-16(D)					1
41023A	41023-1074	BAND-RIM,FR,90-100/90-19(D)					1
41024	41024-011	STOPPER-RIM,1.85-M(DUNLOP)					1
41025	41025-0337-WC	RIM,RR,1.85X16,BLACK					1
41025A	41025-0338-WC	RIM,FR,1.40X19,BLACK					1
41029	41029-1278	SPOKE-INNER,RR,179MMX170D					14
41029A	41029-1288	SPOKE-INNER,FR,RH,211MMX165D					14
41029B	41029-1289	SPOKE-INNER,FR,LH,207MMX165D					14
41030	41030-1151	SPOKE-OUTER,RR,RH,171MMX170D					7
41030A	41030-1161	SPOKE-OUTER,RR,LH,175MMX170D					7
41032	41032-1077	NIPPLE-SPOKE,8X9X20(+),STEEL					56
41090	41090-0103-WC	WHEEL,FR,1.40X19,BLACK (OPTION)					1
41091	41091-0018-WC	WHEEL,RR,1.85X16,BLACK (OPTION)					1

F2230



24. Front Hub

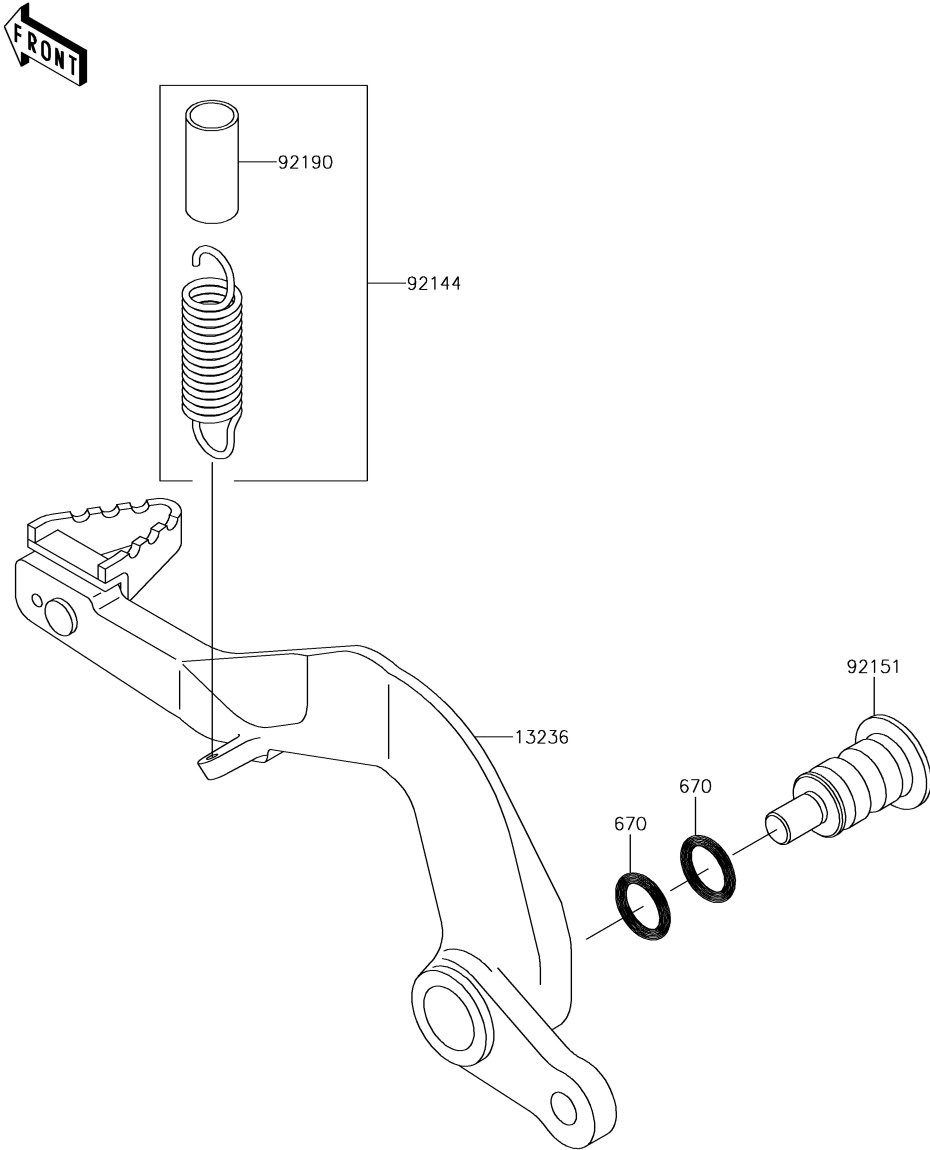
Ref. No.	Part No.	Description	Spec Code	Quantity			
				'19			
41034	41034-1310	DRUM-ASSY,FRONT BRAKE				1	
41068	41068-1333	AXLE,FR				1	
92015	92015-1433	NUT,LOCK,FLANGED,12MM				1	
92045	92045-1062	BEARING-BALL,TMB201LLUC3/2A				1	
92049	92049-1257	SEAL-OIL,TC20376.5				2	
92143	92143-1935	COLLAR,FR BRAKE DRUM,L=76				1	
92143A	92143-1936	COLLAR,FR AXLE,L=12				2	
481	481J3700	CIRCLIP-TYPE-C,37MM				1	
550	550AA2520	PIN-COTTER,2.5X20				1	
601	601B6301UU	BEARING-BALL,#6201UUC3				1	



25. Rear Hub

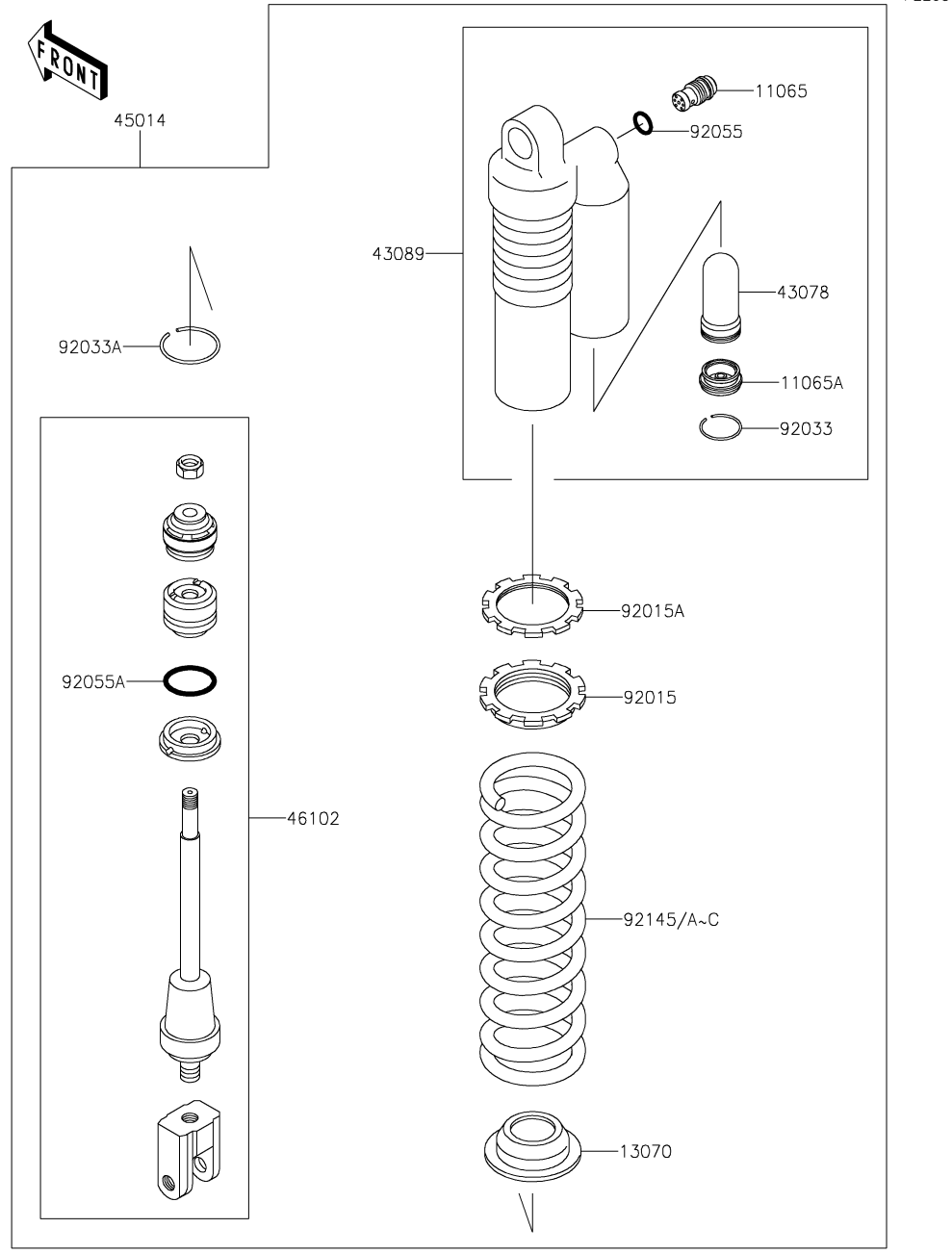
Ref. No.	Part No.	Description	Spec Code	Quantity			
				'19			
				DKF			
41034	41034-0570	DRUM-ASSY,REAR BRAKE			1		
41068	41068-1401	AXLE,RR			1		
42041	42041-1207	SPROCKET-HUB,49T (OPTION)			1		
42041A	42041-1228	SPROCKET-HUB,50T (OPTION)			1		
42041B	42041-1229	SPROCKET-HUB,51T			1		
42041C	42041-1245	SPROCKET-HUB,52T (OPTION)			1		
42041D	42041-1246	SPROCKET-HUB,53T (OPTION)			1		
43044	43044-1122	HOLDER-COMP-CALIPER			1		
92004	92004-0730	STUD,8X16			4		
92015	92015-1401	NUT,FLANGED,14MM			1		
92049	92049-1469	SEAL-OIL			2		
92057	92057-1497	CHAIN,DRIVE,DID420DS2X124L			1		
92058	92058-1086	JOINT-CHAIN,DRIVE			1		
92143	92143-1938	COLLAR,RR AXLE,L=12.5			2		
92152	92152-1090	COLLAR,RR BRAKE DRUM,L=95			1		
92210	92210-0493	NUT,FLANGED,LOCK,8MM			4		
410	410AA0800	WASHER-PLAIN-SMALL,8MM			4		
410A	410AA1400	WASHER-PLAIN-SMALL,14MM			1		
481	481J3500	CIRCLIP-TYPE-C,35MM			1		
550	550AA2520	PIN-COTTER,2.5X20			1		
601	601B6202UU	BEARING-BALL			3		

F2260



26. Brake Pedal

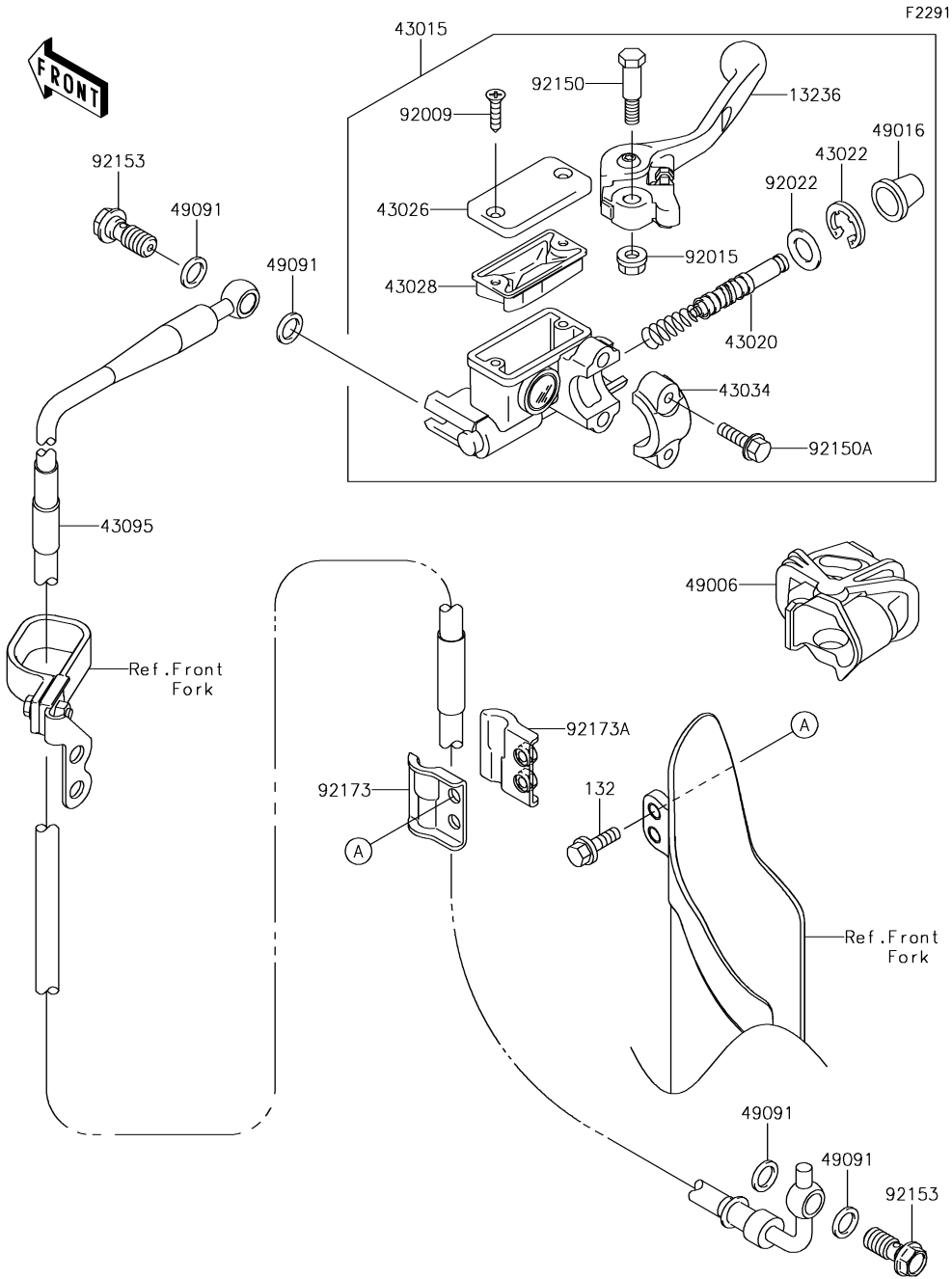
Ref. No.	Part No.	Description	Spec Code	Quantity			
				'19			
13236	13236-1353	LEVER-COMP,BRAKE PEDAL,ALUM.					1
92144	92144-1752	SPRING,BRAKE PEDAL RETURN					1
92151	92151-1572	BOLT,BRAKE PEDAL,8MM					1
92190	92190-1488	TUBE,13X16X25					1
670	670B2012	O RING,12MM					2



F2280

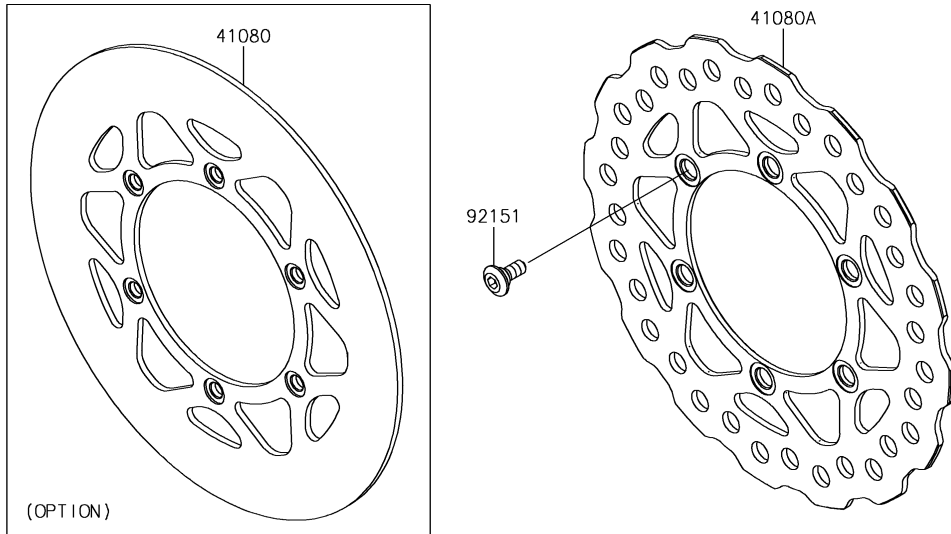
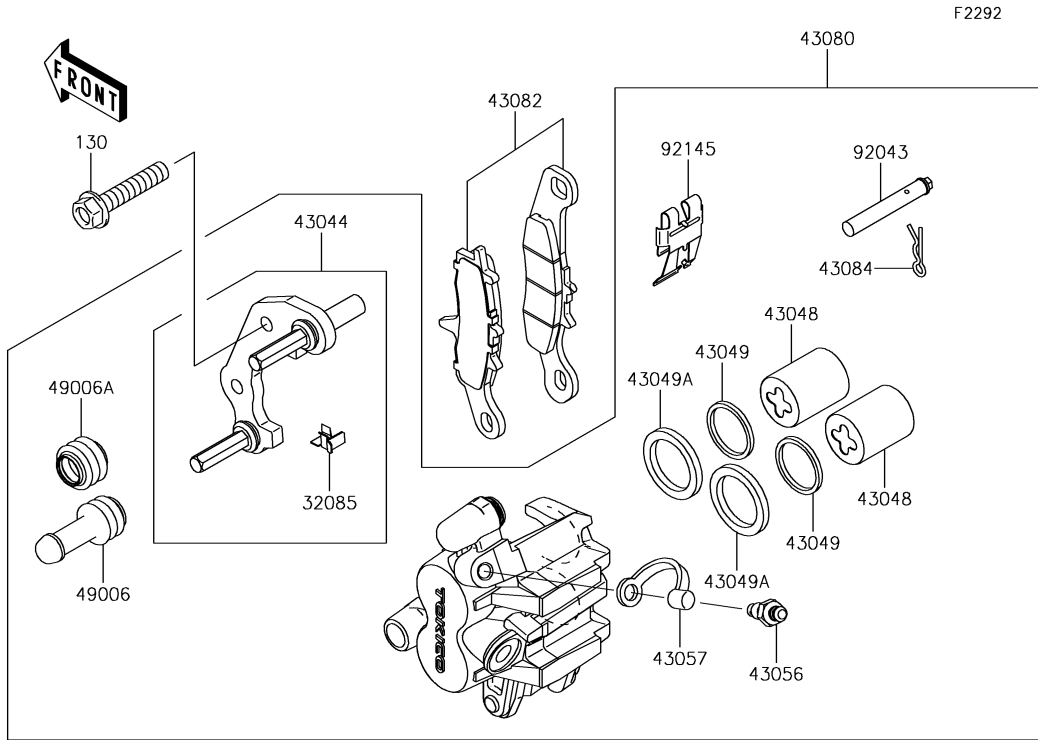
27. Shock Absorber(s)

Ref. No.	Part No.	Description	Spec Code	Quantity			
				'19			
11065	11065-0824-50Y	CAP,G.B.GREEN				1	
11065A	11065-1310	CAP,RESERVOIR				1	
13070	13070-1233	GUIDE,SPRING				1	
43078	43078-0568	RESERVOIR				1	
43089	43089-0029-499	CYLINDER-SHOCKABSORBER,A.BLACK				1	
45014	45014-0562-52M	SHOCKABSORBER,BLACK+GRN				1	
46102	46102-0618	ROD				1	
92015	92015-1679	NUT,SPRING ADJUST				1	
92015A	92015-1713	NUT,SPRING ADJUST LOCK				1	
92033	92033-1091	RING-SNAP,REARSHOCK				1	
92033A	92033-1211	RING-SNAP,SHOCKABSORBER				1	
92055	92055-0786	RING-O				1	
92055A	92055-1334	RING-O,ROD				1	
92145	92145-0954-10	SPRING,SHOCK,K=47N/MM,BLACK				1	
92145A	92145-0955-10	SPRING,SHOCK,K=43N/MM,BLACK (OPTION)				1	
92145B	92145-0956-10	SPRING,SHOCK,K=45N/MM,BLACK (OPTION)				1	
92145C	92145-0957-10	SPRING,SHOCK,K=49N/MM,BLACK (OPTION)				1	



28. Front Master Cylinder

Ref. No.	Part No.	Description	Spec Code	Quantity			
				'19			
				DKF			
13236	13236-0712	LEVER-COMP,FRONT BRAKE			1		
43015	43015-0170	CYLINDER-ASSY-MASTER			1		
43020	43020-0016	PISTON-COMP-BRAKE			1		
43022	43022-1010	STOPPER-BRAKE,PISTON			1		
43026	43026-0020	CAP-BRAKE,MASTER CYLINDER			1		
43028	43028-1067	DIAPHRAGM			1		
43034	43034-1110	HOLDER-BRAKE			1		
43095	43095-0769	HOSE-BRAKE,FR			1		
49006	49006-0078	BOOT,FRONT BRAKE LEVER			1		
49016	49016-1044	COVER-SEAL,MASTER CYLINDER			1		
49091	49091-0001	WASHER-SEAL,10.1X14.5X1.5			4		
92009	92009-1795	SCREW			2		
92015	92015-1528	NUT,FLANGED,6MM			1		
92022	92022-1814	WASHER			1		
92150	92150-1451	BOLT,LEVER SET			1		
92150A	92150-1452	BOLT			2		
92153	92153-1419	BOLT,OIL,L=23			2		
92173	92173-1177	CLAMP,BRAKE HOSE,LH			1		
92173A	92173-1178	CLAMP,BRAKE HOSE,RH			1		
132	132BA0616	BOLT-FLANGED-SMALL,6X16			2		

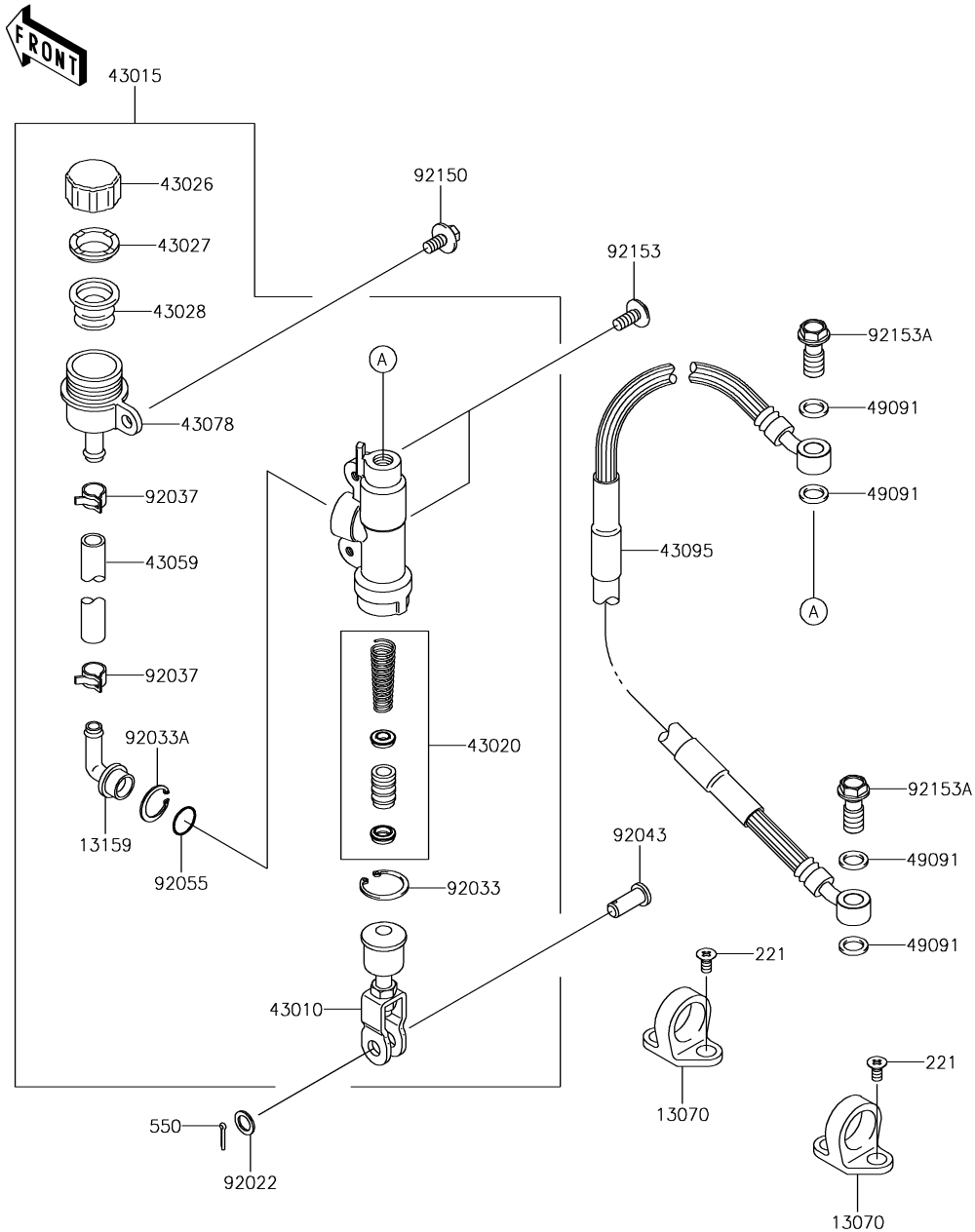


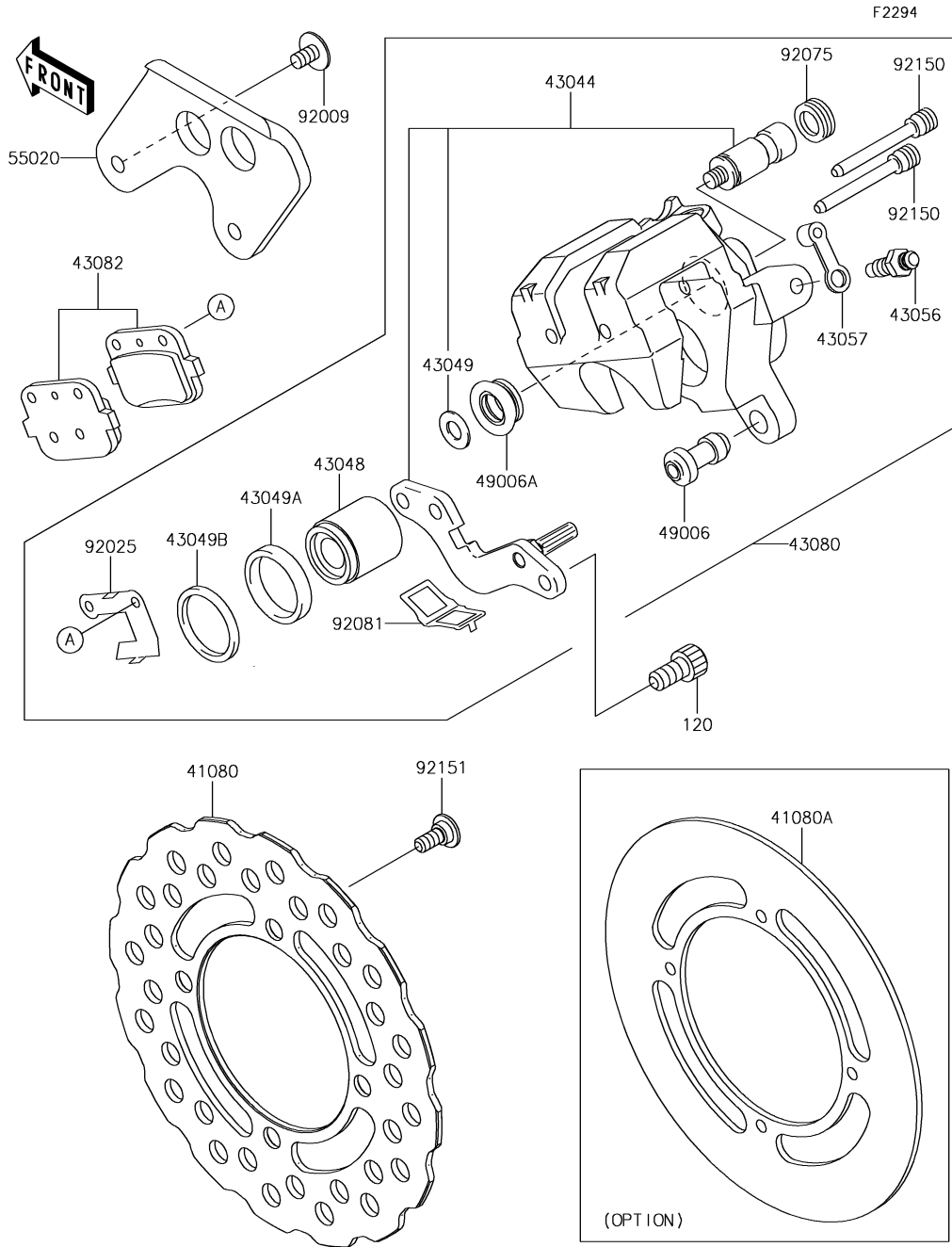
Ref. No.	Part No.	Description	Spec Code	Quantity			
				'19			
				DKF			
32085	32085-1437	STOPPER			1		
41080	41080-0112	DISC,FR (OPTION)			1		
41080A	41080-0118	DISC,FR			1		
43044	43044-1119	HOLDER-COMP-CALIPER,FR			1		
43048	43048-1083	PISTON-CALIPER			2		
43049	43049-1059	PACKING,PISTON			2		
43049A	43049-1090	PACKING,PISTON SEAL			2		
43056	43056-0007	BREATHER-BRAKE			1		
43057	43057-003	CAP-BREATHER			1		
43080	43080-0008	CALIPER-SUB-ASSY,FR,LH			1		
43082	43082-1196	PAD-ASSY-BRAKE			1		
43084	43084-003	CLAMP,PAD			1		
49006	49006-1054	BOOT,CALIPER			1		
49006A	49006-1055	BOOT,CALIPER			1		
92043	92043-1356	PIN,PAD			1		
92145	92145-1260	SPRING,PAD			1		
92151	92151-1799	BOLT,DISC PLATE,6MM			6		
130	130CA0840	BOLT-FLANGED,8X40			2		

F2293

30. Rear Master Cylinder

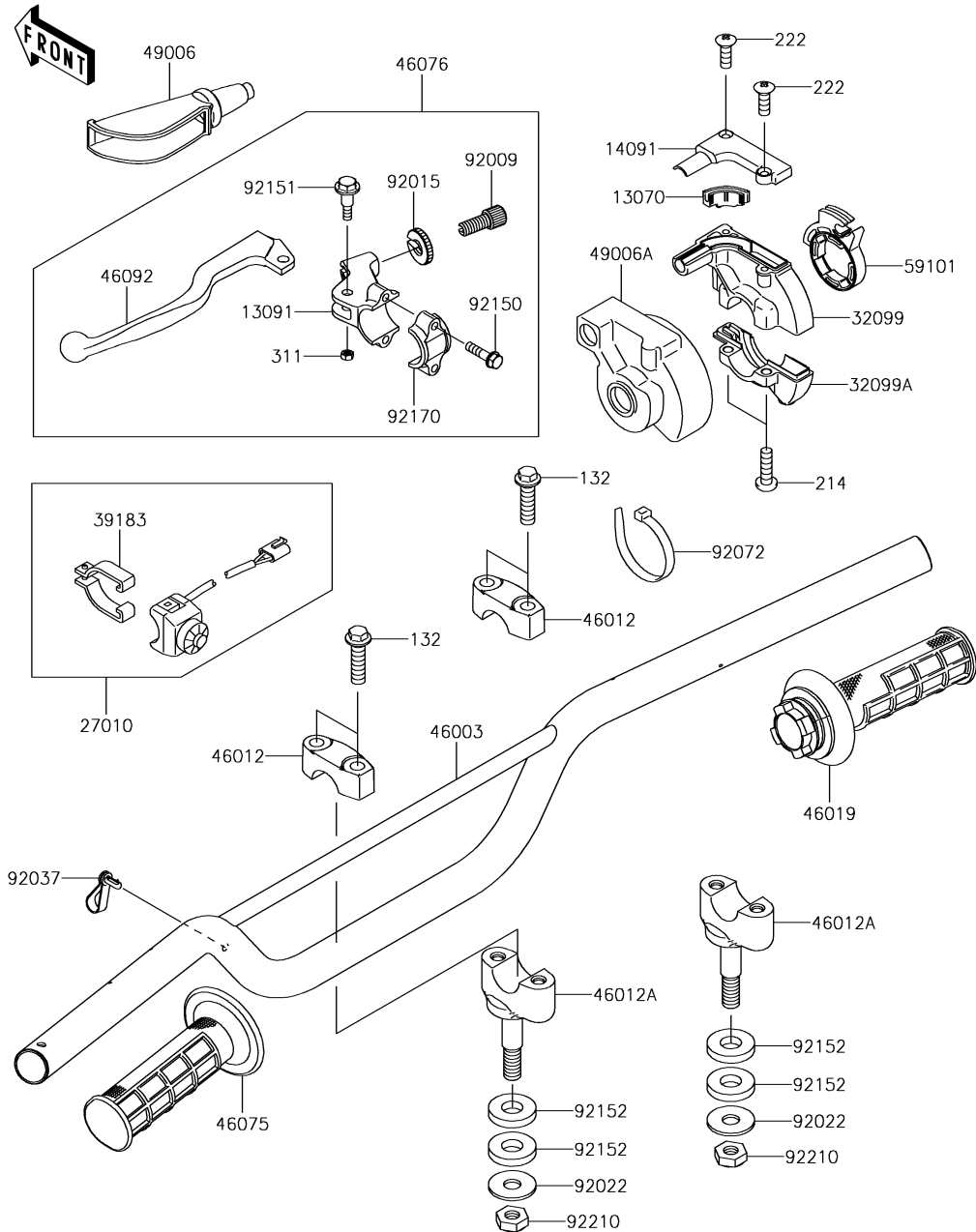
Ref. No.	Part No.	Description	Spec Code	Quantity	
				'19	DKF
13070	13070-1381	GUIDE,HOSE		2	
13159	13159-1056	CONNECTOR		1	
43010	43010-1079	ROD-ASSY-BRAKE		1	
43015	43015-1606	CYLINDER-ASSY-MASTER,RR		1	
43020	43020-1094	PISTON-COMP-BRAKE		1	
43026	43026-1058	CAP-BRAKE		1	
43027	43027-1052	PLATE-DIAPHRAGM		1	
43028	43028-1060	DIAPHRAGM		1	
43059	43059-1670	HOSE-BRAKE,RR MASTER CYLINDER		1	
43078	43078-1068	RESERVOIR		1	
43095	43095-0668	HOSE-BRAKE,RR,L=567		1	
49091	49091-0001	WASHER-SEAL,10.1X14.5X1.5		4	
92022	92022-1028	WASHER,8.5X13X1		1	
92033	92033-0079	RING-SNAP,20.9X24.6X1.2		1	
92033A	92033-1186	RING-SNAP,20.5MM		1	
92037	92037-1710	CLAMP		2	
92043	92043-0004	PIN		1	
92055	92055-0741	RING-O,14.8X2.4		1	
92150	92150-1340	BOLT,6X14		1	
92153	92153-1021	BOLT,SOCKET,6X14		2	
92153A	92153-1419	BOLT,OIL,L=23		2	
221	221AA0510	SCREW-CSK-CROS,5X10		4	
550	550AA2015	PIN-COTTER,2.0X15		1	





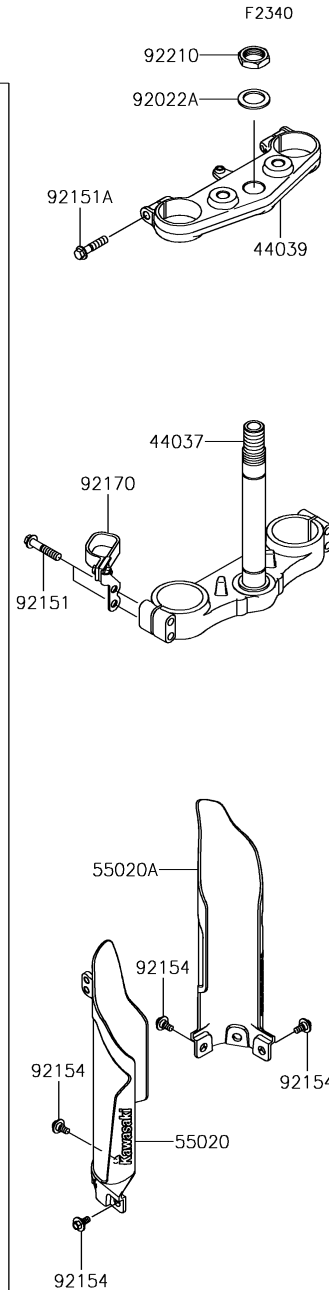
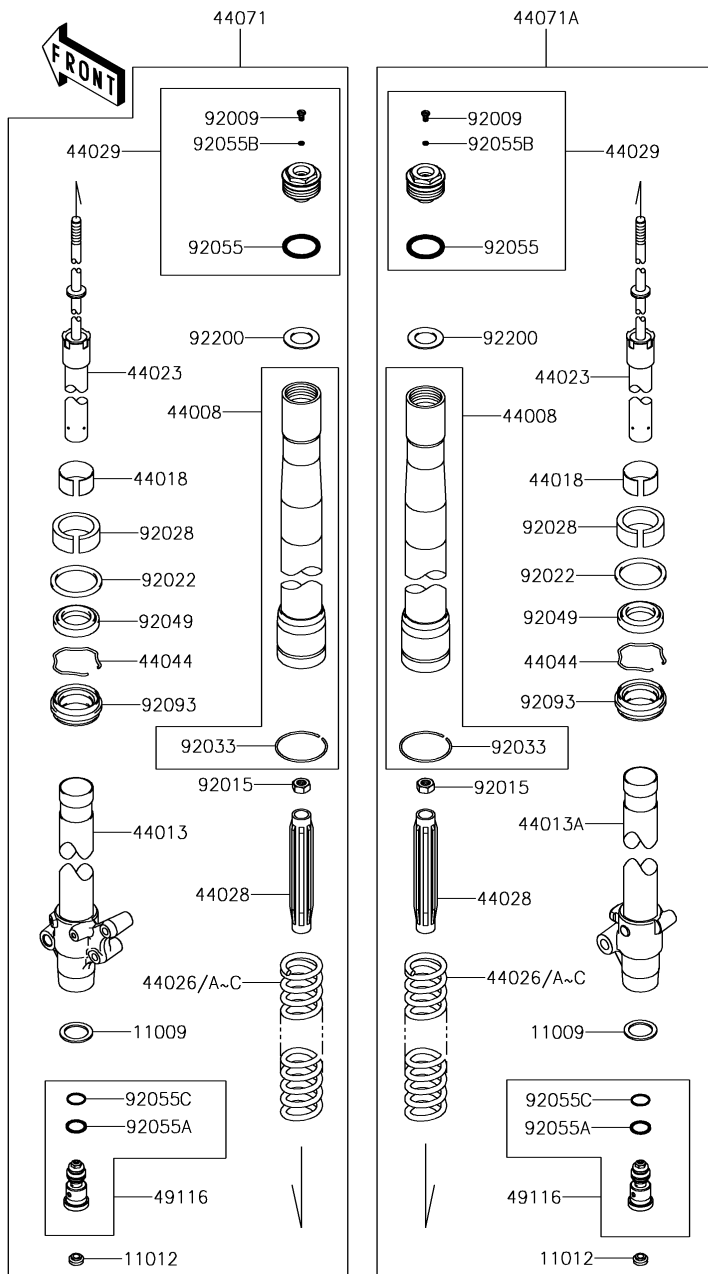
Ref. No.	Part No.	Description	Spec Code	Quantity			
				'19			
41080	41080-0170	DISC,RR		1			
41080A	41080-1493	DISC,RR (OPTION)		1			
43044	43044-1076	HOLDER-COMP-CALIPER,RR		1			
43048	43048-1064	PISTON-CALIPER		1			
43049	43049-1025	PACKING		1			
43049A	43049-1060	PACKING,PISTON SEAL		1			
43049B	43049-1061	PACKING,PISTON SEAL		1			
43056	43056-1055	BREATHER		1			
43057	43057-1001	CAP-BREATHER		1			
43080	43080-5134	CALIPER-SUB-ASSY,RR		1			
43082	43082-1205	PAD-ASSY-BRAKE		1			
49006	49006-1088	BOOT,CALIPER		1			
49006A	49006-1089	BOOT,CALIPER		1			
55020	55020-1247-6D	GUARD,CALIPER,BLACK		1			
92009	92009-1286	SCREW,6X10,WHITE		2			
92025	92025-1817	SHIM,PAD		1			
92075	92075-1414	DAMPER		1			
92081	92081-1502	SPRING,PAD		1			
92150	92150-1144	BOLT		2			
92151	92151-1799	BOLT,DISC PLATE,6MM		4			
120	120CA0816	BOLT-SOCKET,8X16		2			

F2310

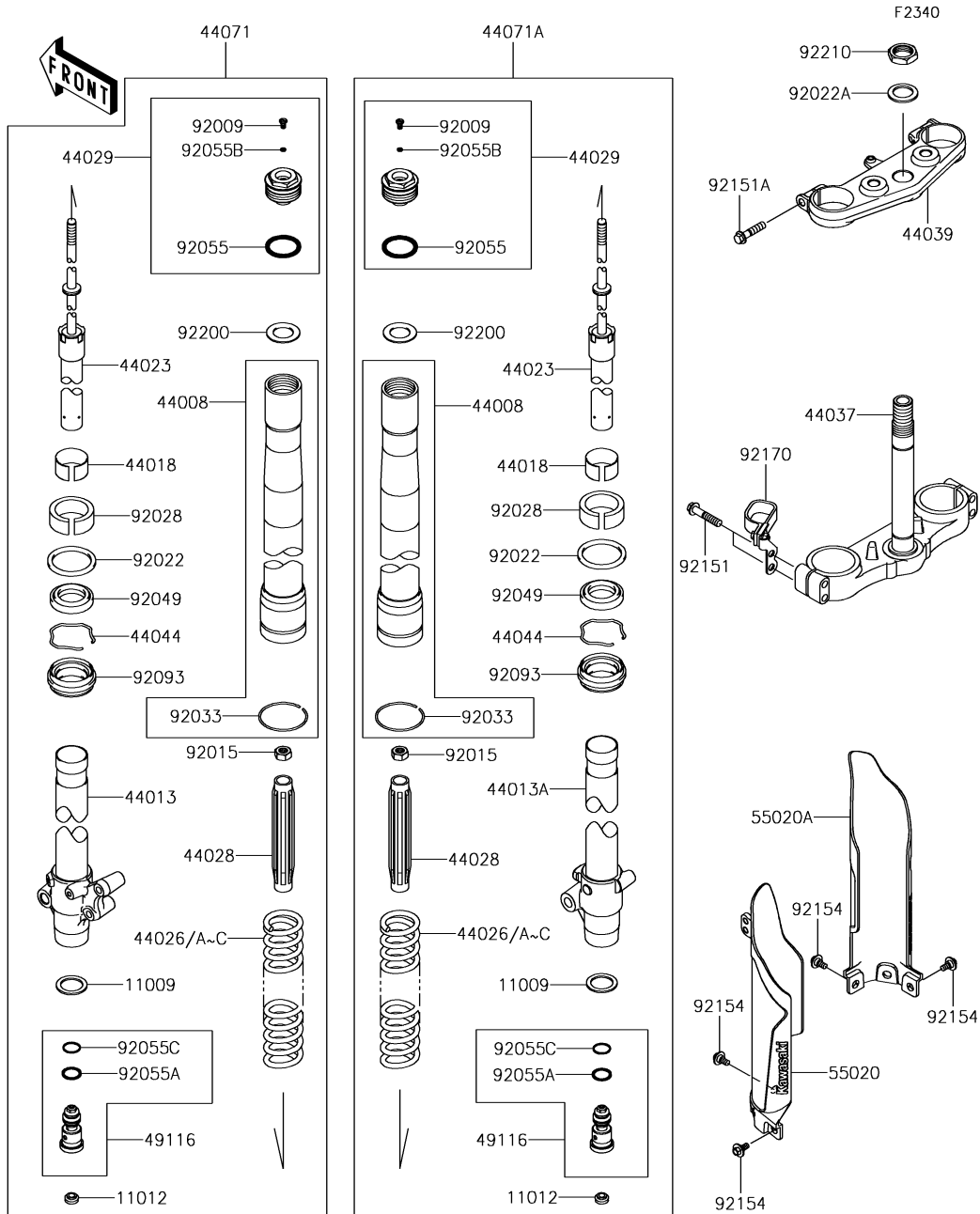


32. Handlebar

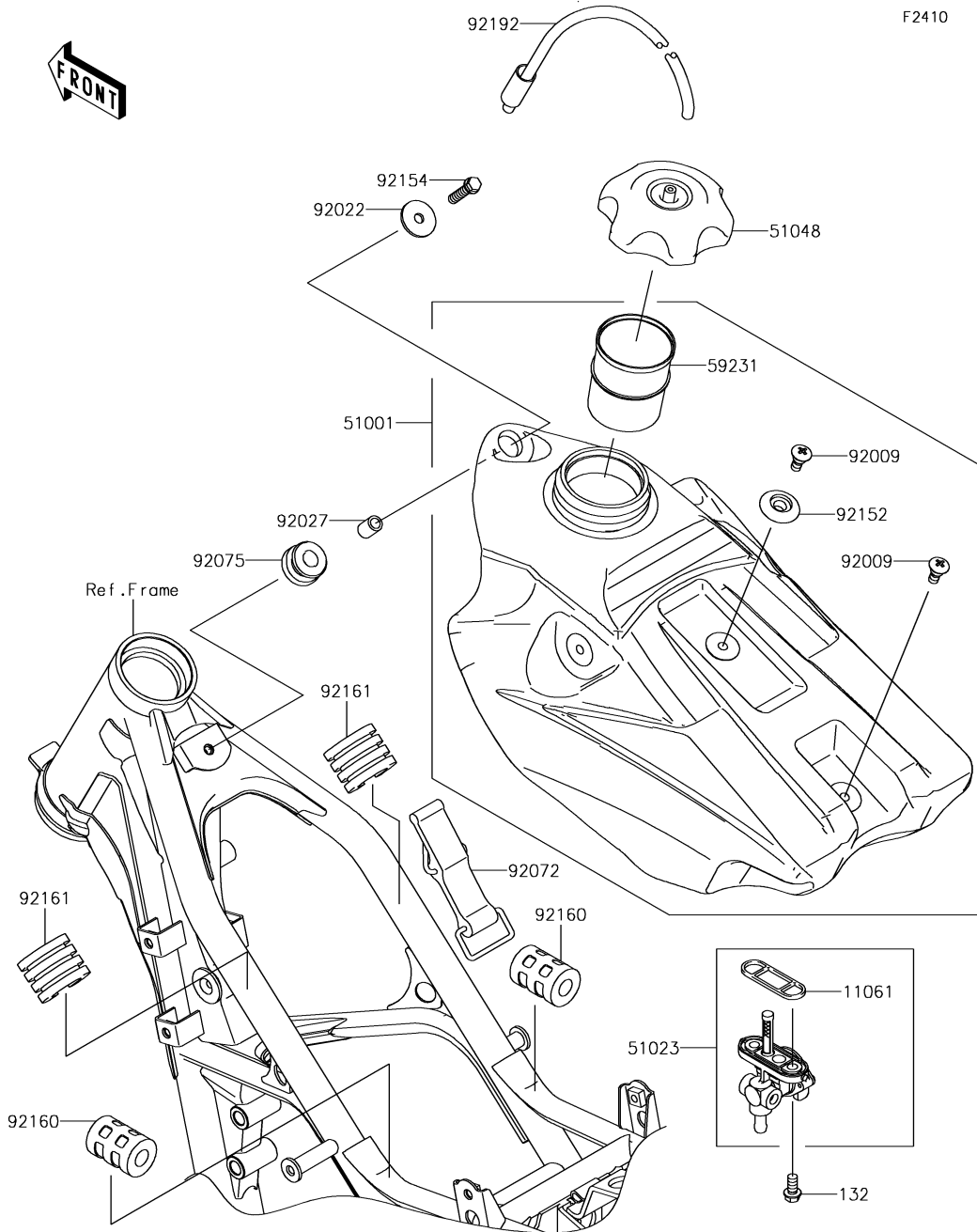
Ref. No.	Part No.	Description	Spec Code	Quantity			
				'19			
				DKF			
13070	13070-0083	GUIDE, THROTTLE			1		
13091	13091-1728	HOLDER, CLUTCH LEVER			1		
14091	14091-0873	COVER, THROTTLE CASE, UPP			1		
27010	27010-0047	SWITCH, ENGINE STOP			1		
32099	32099-0037	CASE, THROTTLE, UPP			1		
32099A	32099-0038	CASE, THROTTLE, LWR			1		
39183	39183-1059	BAND-ASSY, SWITCH			1		
46003	46003-0205-18R	HANDLE, F.S. BLACK			1		
46012	46012-0011-21	HOLDER-HANDLE, UPP, F. BLACK			2		
46012A	46012-0342-21	HOLDER-HANDLE, LWR, F. BLACK			2		
46019	46019-0023	GRIP-ASSY, THROTTLE			1		
46075	46075-0615	GRIP, LH			1		
46076	46076-1203	LEVER-ASSY-GRIP, CLUTCH			1		
46092	46092-1165	LEVER-GRIP, CLUTCH			1		
49006	49006-1017	BOOT, LEVER HOLDER			1		
49006A	49006-1097	BOOT, THROTTLE CASE			1		
59101	59101-0003	REEL, THROTTLE			1		
92009	92009-1476	SCREW, CABLE ADJUST, 8MM			1		
92015	92015-1596	NUT, CABLE ADJUST LOCK, 8MM			1		
92022	92022-1088	WASHER, 10.2X28X2			2		
92037	92037-1163	CLAMP, SPEED, L=58			1		
92072	92072-0055	BAND, L=100			1		
92150	92150-1474	BOLT			2		
92151	92151-1103	BOLT, LEVER SET, 5MM			1		
92152	92152-1716	COLLAR, 12.5X28X5			4		
92170	92170-1226	CLAMP, LEVER HOLDER			1		
92210	92210-1184	NUT, LOCK, 10MM			2		
132	132BA0835	BOLT-FLANGED-SMALL, 8X35			4		
214	214AB0518	SCREW-PAN+-, 5X18			2		
222	222AB0412	SCREW-CSK-RD-CROS, 4X12			2		
311	311AA0500	NUT-HEX, 5MM			1		



Ref. No.	Part No.	Description	Spec Code	Quantity	
				'19	DKF
11009	11009-1592	GASKET,FORK CYLINDER BOLT		2	
11012	11012-1692	CAP		2	
44008	44008-0068-KX	PIPE-FORK OUTER,SILVER		2	
44013	44013-0215	PIPE-FORK INNER,LH		1	
44013A	44013-0216	PIPE-FORK INNER,RH		1	
44018	44018-1058	PISTON-FORK		2	
44023	44023-0113	CYLINDER-SET-FORK		2	
44026	44026-1633	SPRING-FRONT FORK,K=2.75N/MM (OPTION)		2	
44026A	44026-1634	SPRING-FRONT FORK,K=2.84N/MM		2	
44026B	44026-1635	SPRING-FRONT FORK,K=2.94N/MM (OPTION)		2	
44026C	44026-1671	SPRING-FRONT FORK,K=2.65N/MM (OPTION)		2	
44028	44028-1090	GUIDE-FORK SPRING		2	
44029	44029-0024-50Y	SEAT-FORK SPRING,G.B.GREEN		2	
44037	44037-0139-21	HOLDER-FORK UNDER,F.BLACK		1	
44039	44039-0128-21	HOLDER-FORK UPPER,F.BLACK		1	
44044	44044-015	RING-SNAP		2	
44071	44071-1361-56D	DAMPER-ASSY,FORK,LH,SILVER		1	
44071A	44071-1362-56D	DAMPER-ASSY,FORK,RH,SILVER		1	
49116	49116-0038	VALVE-ASSY,BASE		2	
55020	55020-0896-6D	GUARD,FORK,LH,BLACK		1	
55020A	55020-0897-6D	GUARD,FORK,RH,BLACK		1	
92009	92009-1568	SCREW		2	
92015	92015-1839	NUT		2	
92022	92022-1275	WASHER,FRONT FORK		2	
92022A	92022-1873	WASHER,STEERING STEM		1	
92028	92028-1656	BUSHING		2	
92033	92033-0737	RING-SNAP		2	
92049	92049-1394	SEAL-OIL,FORK OUTER TUBE		2	
92055	92055-1123	RING-O		2	
92055A	92055-1156	RING-O		2	
92055B	92055-1441	RING-O,2.8X6.6X1.9		2	
92055C	92055-1502	RING-O,FORK VALVE		2	
92093	92093-1426	SEAL,FORK OUTER TUBE		2	
92151	92151-1877	BOLT,FLANGED,8X40		4	
92151A	92151-1878	BOLT,FLANGED,8X35		2	
92154	92154-0546	BOLT,FLANGED,6X9		6	
92170	92170-1810	CLAMP		1	

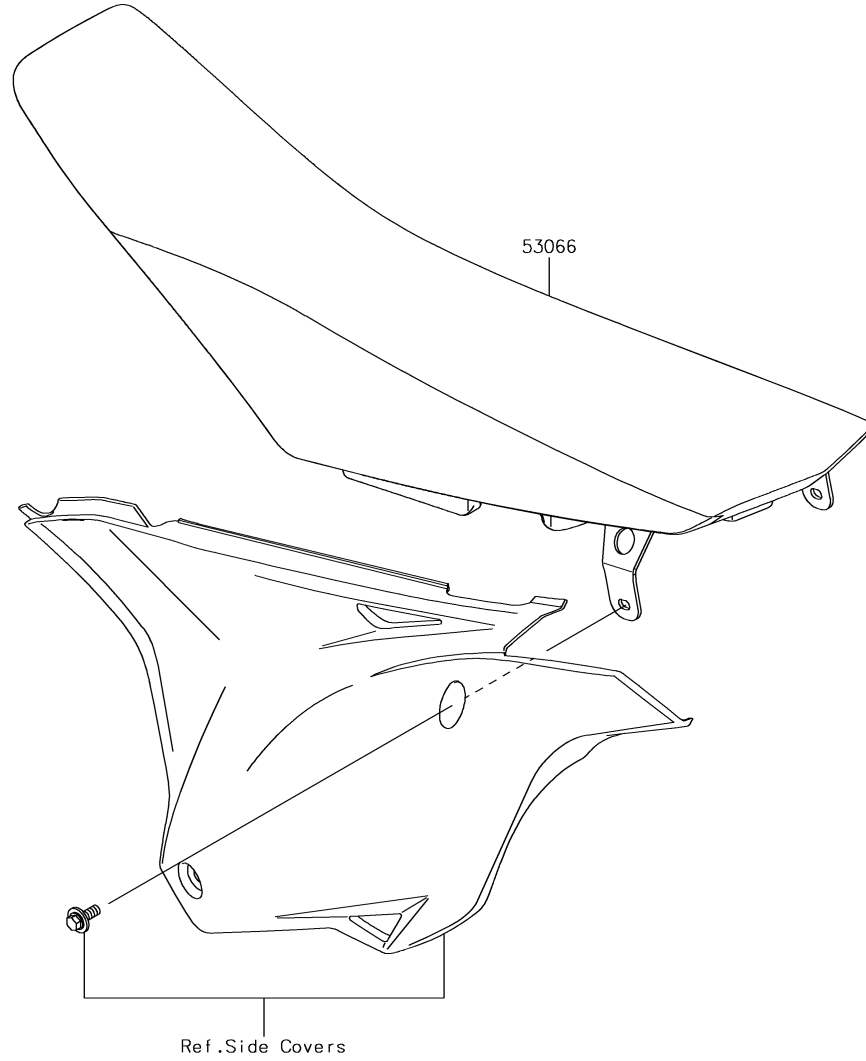


Ref. No.	Part No.	Description	Spec Code	Quantity			
				'19			
92200	92200-1655	WASHER				2	
92210	92210-1521	NUT,STEERING STEM,22MM				1	



Ref. No.	Part No.	Description	Spec Code	Quantity			
				'19			
				DKF			
11061	11061-0181	GASKET,FUEL TAP					1
51001	51001-0776	TANK-COMP-FUEL					1
51023	51023-0024	TAP-ASSY,FUEL					1
51048	51048-0009	CAP-ASSY-TANK,FUEL					1
59231	59231-0019	FILLER					1
92009	92009-1971	SCREW,6MM					2
92022	92022-1690	WASHER,6.5X24X2					1
92027	92027-1966	COLLAR,6.8X10X14					1
92072	92072-1229	BAND,FUEL TANK					1
92075	92075-1787	DAMPER					1
92152	92152-1346	COLLAR					1
92154	92154-0520	BOLT,FLANGED,6X25					1
92160	92160-1236	DAMPER,FUEL TANK					2
92161	92161-1175	DAMPER,FUEL TANK					2
92192	92192-0161	TUBE					1
132	132BA0612	BOLT-FLANGED-SMALL,6X12					2

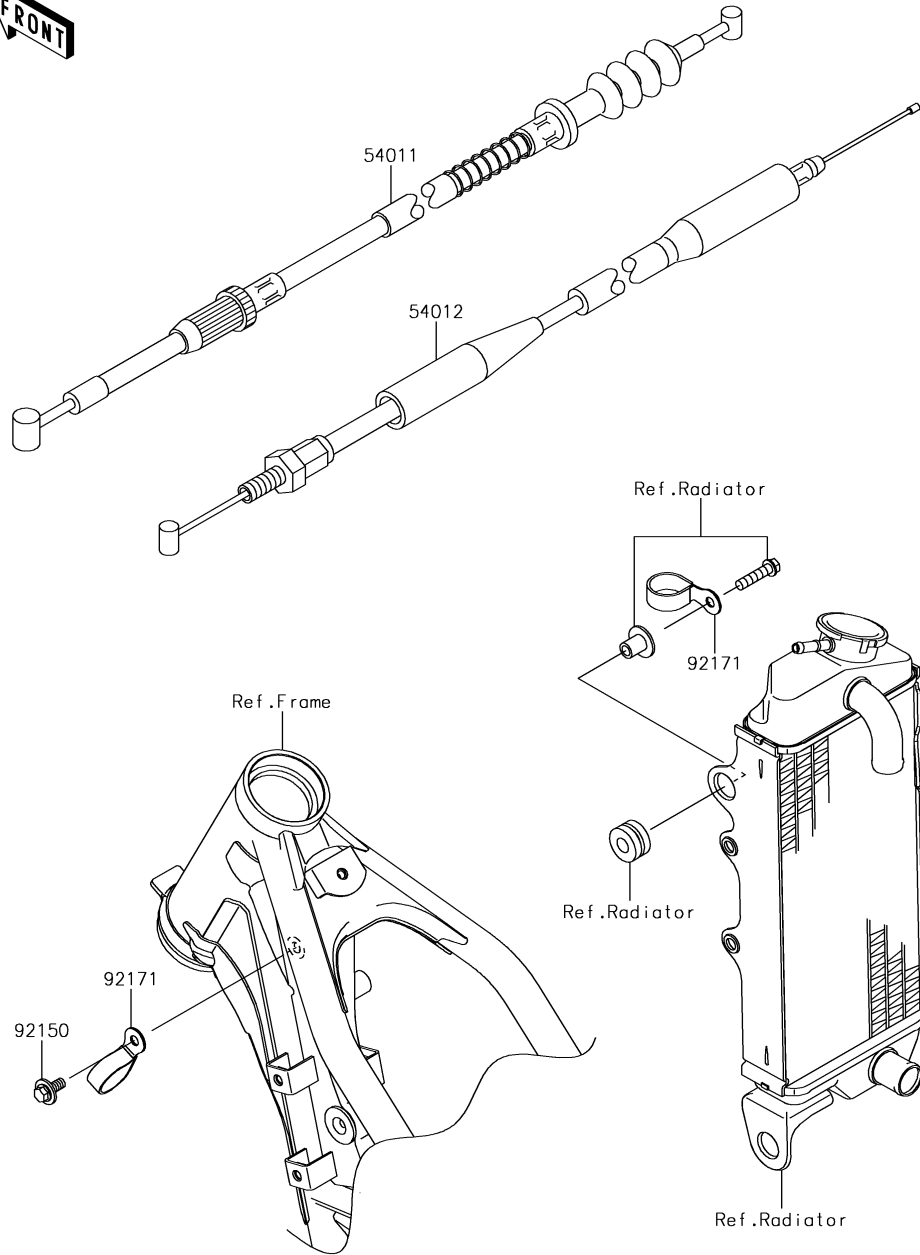
F2510



Ref. No.	Part No.	Description	Spec Code	Quantity			
				'19			
53066	53066-0455-49F	SEAT-ASSY, GREEN/BLACK					1



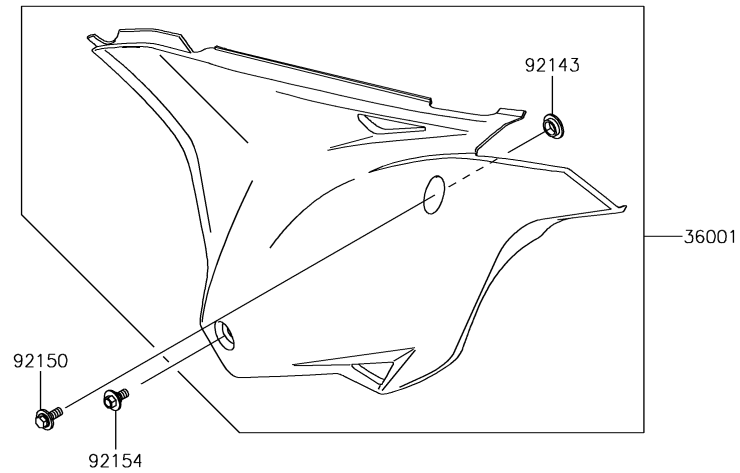
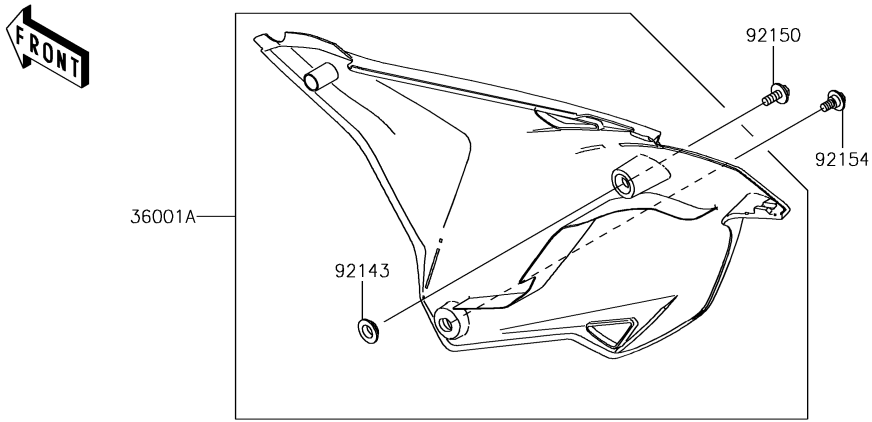
F2540



Ref. No.	Part No.	Description	Spec Code	Quantity			
				'19			
54011	54011-0572	CABLE-CLUTCH		1			
54012	54012-0595	CABLE-THROTTLE		1			
92150	92150-1340	BOLT,6X14		1			
92171	92171-1279	CLAMP		2			

37. Side Covers

F2611

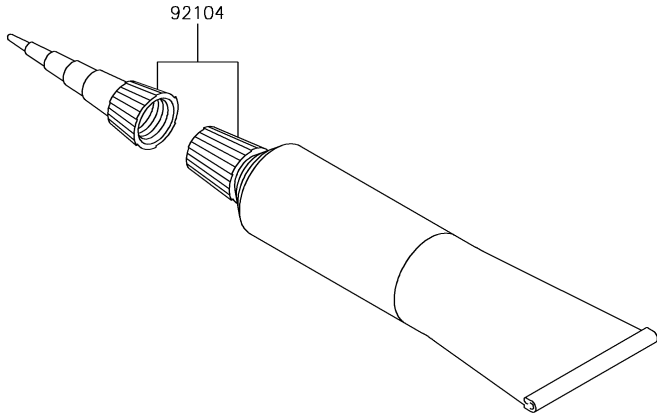
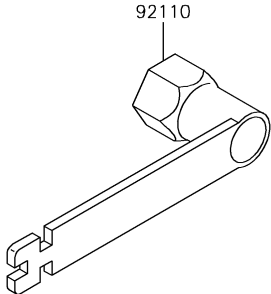


Ref. No.	Part No.	Description	Spec Code	Quantity			
				'19			
36001	36001-0591-266	COVER-SIDE,LH,B.WHITE					1
36001A	36001-0592-266	COVER-SIDE,RH,B.WHITE					1
92143	92143-1196	COLLAR					2
92150	92150-1506	BOLT,FLANGED,6X16					2
92154	92154-0546	BOLT,FLANGED,6X9					2

F2810

38. Owner's Tools

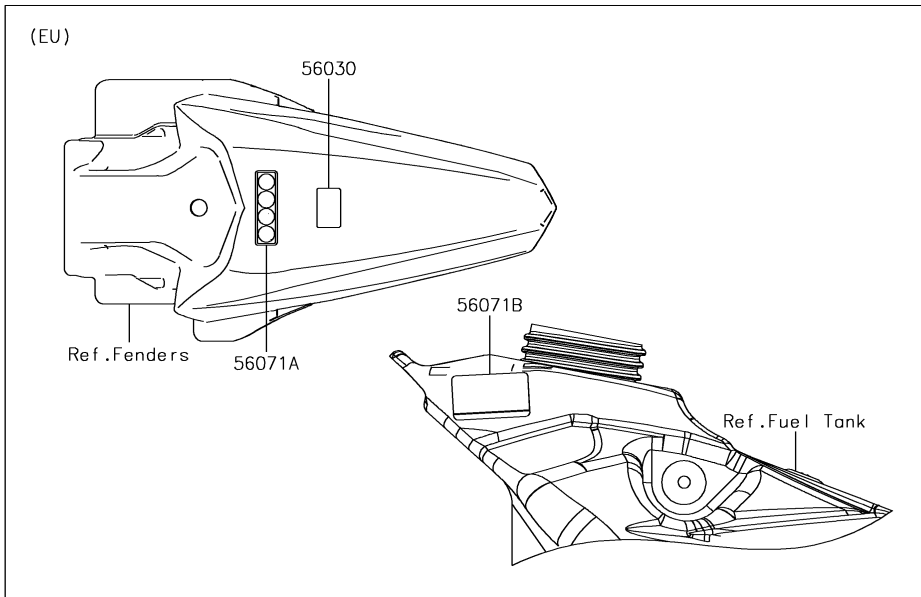
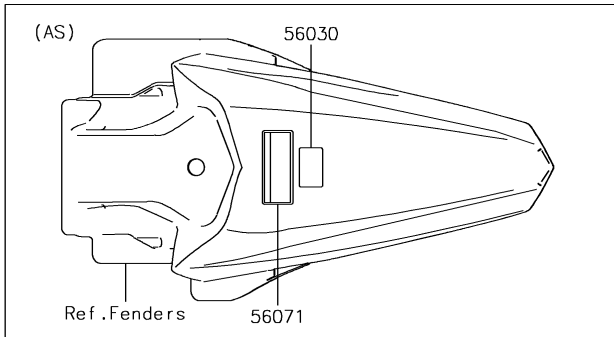
Ref. No.	Part No.	Description	Spec Code	Quantity			
				'19			
92104	92104-002	GASKET-LIQUID,TB1105B,SILVER		1			
92110	92110-0571	TOOL-WRENCH,PLUG,21MM		1			



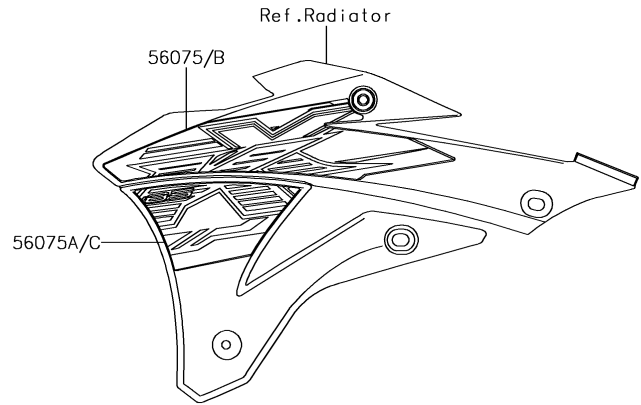
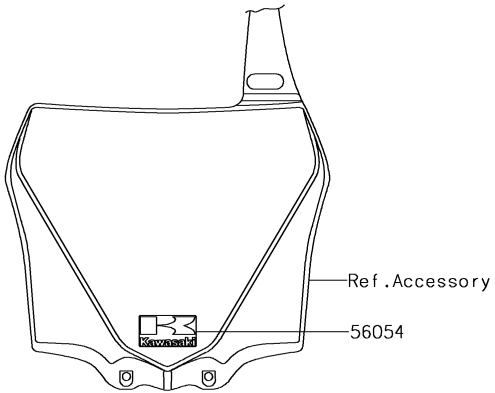
F2860

39. Labels

Ref. No.	Part No.	Description	Spec Code	Quantity				
				'19				
56030	56030-1230	LABEL,32:1						1
56071	56071-0028	LABEL-WARNING,IMPORTANT NOTICE						
		L_____	AS					1
56071A	56071-0416	LABEL-WARNING,RACE ONLY						
		L_____	EU					1
56071B	56071-0694	LABEL-WARNING,FUEL,E5/E10						
		L_____	EU					1



F2861

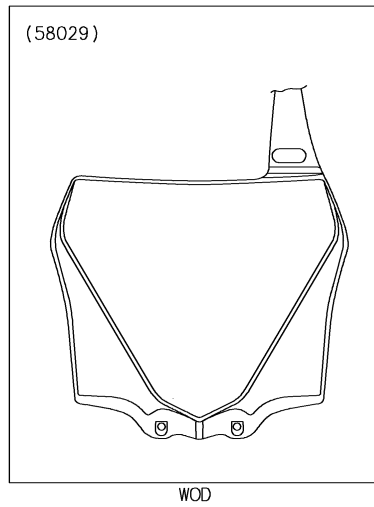
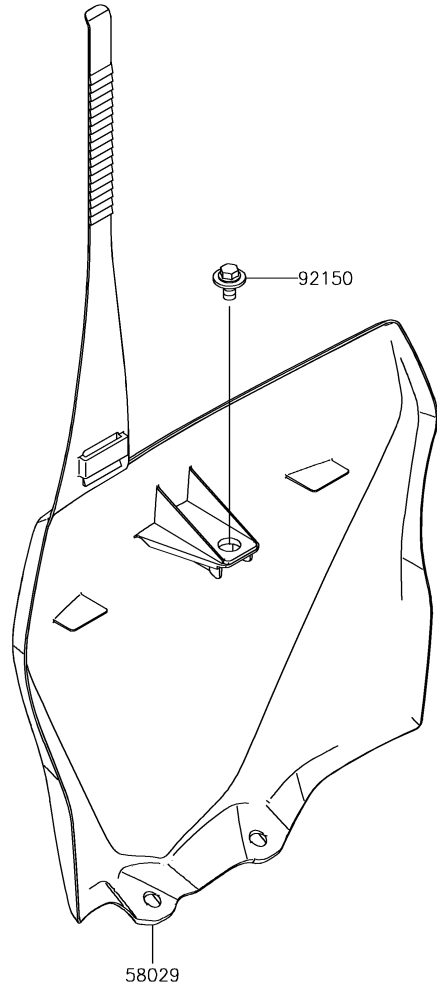


40. Decals

Ref. No.	Part No.	Description	Spec Code	Quantity				
				'19				
56054	56054-2260	MARK,NUMBER PLATE						1
56075	56075-4467	PATTERN,SHROUD,LH,UPP						1
56075A	56075-4468	PATTERN,SHROUD,LH,LWR						1
56075B	56075-4469	PATTERN,SHROUD,RH,UPP						1
56075C	56075-4470	PATTERN,SHROUD,RH,LWR						1

F2910

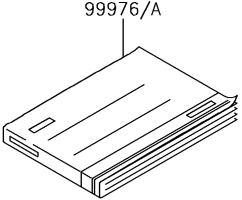
41. Accessory



Ref. No.	Part No.	Description	Spec Code	Quantity			
				'19			
58029	58029-0011-266	PLATE-NUMBER,B.WHITE					1
92150	92150-1435	BOLT,6X12					1

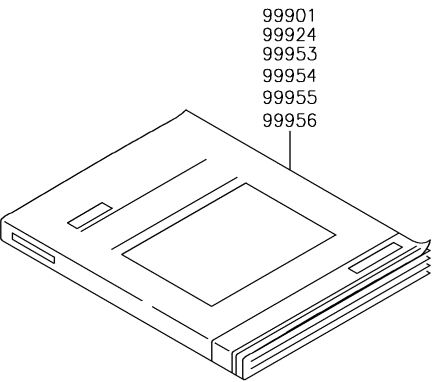
F2920

Owner's Manual
(Local Procurement)



Ref.No.	Language
(99976)	English
	French
	German
(99976A)	Italian
	Spanish
	Dutch

Service Manual



Ref.No.	Language
(99901)	Dutch
(99924)	English
(99953)	German
(99954)	French
(99955)	Italian
(99956)	Spanish

42. Manual(EU)

Ref. No.	Part No.	Description	Spec Code	Quantity			
				'19			
99901	99901-0041-06	SERVICE MANUAL,DUTCH					
		L_____	EU	1			
99924	99924-1470-06	SERVICE MANUAL,ENGLISH					
		L_____	EU	1			
99953	99953-1081-06	SERVICE MANUAL,GERMAN					
		L_____	EU	1			
99954	99954-1099-06	SERVICE MANUAL,FRENCH					
		L_____	EU	1			
99955	99955-1068-06	SERVICE MANUAL,ITALIAN					
		L_____	EU	1			
99956	99956-1056-06	SERVICE MANUAL,SPANISH					
		L_____	EU	1			
99976	99976-0138	OWNER'S MANUAL,EN/FR/DE,KX85C					
		L_____	EU	1			
99976A	99976-0139	OWNER'S MANUAL,IT/ES/NL,KX85C					
		L_____	EU	1			

'19 KX85 DKF

Numerical Parts Index

Part No.	Fig No.	Part No.	Fig No.	Part No.	Fig No.	Part No.	Fig No.	Part No.	Fig No.	Part No.	Fig No.
11001-0771	1	13088-1016	6	13272-1446	18	16187-0560	12	39062-0646	15	43027-1052	30
11004-0760	1	13089-1120	6	13272-1450	1	16187-0561	12	39062-1425	15	43028-1060	30
11005-0621	1	13091-1390	8	13280-0768	2	16187-0562	12	39062-1712	15	43028-1067	28
11009-1592	33	13091-1697	2	132BA0608	2	16187-0563	12	39129-1022	11	43034-1110	28
11009-1759	12	13091-1728	32	132BA0612	10	16187-0564	12	39183-1059	32	43044-1076	31
11011-1612	2	13095-1406	6	132BA0612	15	16187-0565	12	41009-0555	23	43044-1119	29
11012-1263	18	13097-1148	4	132BA0612	3	16187-0566	12	41009-0556	23	43044-1122	25
11012-1692	33	130AA0608	1	132BA0612	34	18020-1272	3	41022-1121	23	43048-1064	31
11013-0736	2	130AA0608	11-1	132BA0614	2	18046-1559	3	41022-1122	23	43048-1083	29
11060-1778	1	130BA0520	1	132BA0616	28	18100-0016	3	41023-1072	23	43049-1025	31
11060-1779	1	130BA0525	1	132BA0616	5	18120-0017	3	41023-1074	23	43049-1059	29
11060-1842	3	130CA0510	11-1	132BA0616	9	21003-0150	13	41024-011	23	43049-1060	31
11061-0122	11	130CA0840	29	132BA0618	14	21007-0073	13	41025-0337-WC	23	43049-1061	31
11061-0181	34	13127-1261	7	132BA0620	11-1	21119-0587	13	41025-0338-WC	23	43049-1090	29
11061-0184	11	13128-0022	7	132BA0630	11-1	21121-0722	14	41029-1278	23	43056-0007	29
11061-0194	11	13129-1725	7	132BA0635	10	21130-1077	14	41029-1288	23	43056-1055	31
11061-0869	11	13129-1730	7	132BA0650	18	214AB0518	32	41029-1289	23	43057-003	29
11061-0889	1	13140-1302	8	132BA0835	32	221AA0510	30	41030-1151	23	43057-1001	31
11065-0824-50Y	27	13140-1303	8	132BA0860	17	221AA0512	1	41030-1161	23	43059-1670	30
11065-1310	27	13140-1304	8	13320-0002	11	221AA0618	5	41032-1077	23	43078-0568	27
115BA0825	8	13141-1120	8	14001-0681	10	221AA0645	18	41034-0570	25	43078-1068	30
12005-0726	1	13144-0564	7	14031-0580	11	222AB0412	32	41034-1310	24	43080-0008	29
12005-0728	1	13144-1022	7	14032-0041	11	223AB0414	12-1	41068-1333	24	43080-5134	31
12021-1123	1	13159-1056	30	14032-0578	11	223AB0416	12-1	41068-1401	25	43082-1196	29
12022-1084	1	13161-0571	9	14037-0748-6C	15	224AA0614	13	41080-0112	29	43082-1205	31
12053-0209	18	13165-1114	9	14037-1282-6C	15	27010-0047	32	41080-0118	29	43084-003	29
12053-0210	18	13168-0779	1	14069-1062	10	290CA0808	5	41080-0170	31	43089-0029-499	27
12053-1414	18	13169-012	10	14073-1785	2	311AA0500	32	41080-1493	31	43095-0668	30
120CA0510	1	13183-1182	10	14091-0873	32	32037-1552	17	41090-0103-WC	23	43095-0769	28
120CA0816	31	13187-1013	6	14092-1081	4	32037-1553	17	41091-0018-WC	23	44008-0068-KX	33
13001-0744	4	13206-1066	5	14093-0003	1	32085-1437	29	410AA0800	25	44013-0215	33
13002-0040	4	13234-0008	11	14093-0046	1	32099-0037	32	410AA1400	25	44013-0216	33
13003-1441	4	13234-0048	1	15004-0856	12	32099-0038	32	42036-0030	19	44018-1058	33
13031-0771	4	13234-1103	11	16002-1056	12	32160-0670-18R	16	42036-1067	18	44023-0113	33
13032-1230	4	13236-0023	11	16004-1065	12	32160-0677-18R	16	42036-1273	19	44026-1633	33
13033-1060	4	13236-0712	28	16007-1155	12	32190-1119	17	42036-1274	19	44026-1634	33
13034-0013	4	13236-1152	9	16014-1058	12	33001-0611	18	42036-1351	19	44026-1635	33
13035-1054	4	13236-1298	6	16016-1075	12	33032-1161	18	42041-1207	25	44026-1671	33
13037-0796	4	13236-1353	26	16017-1431	12	33040-0039	18	42041-1228	25	44028-1090	33
13037-0798	4	13242-0100	9	16021-1161	12	34024-1404-18R	22	42041-1229	25	44029-0024-50Y	33
13061-1712	5	13260-1014	7	16025-1220	12	34028-1498-CE	20	42041-1245	25	44037-0139-21	33
13064-0073	5	13260-1950	7	16030-1064	12	34028-1499-CE	20	42041-1246	25	44039-0128-21	33
13066-1097	5	13260-1951	7	16031-1065	12	35004-0329-290	21	43010-1079	30	44044-015	33
13070-0083	32	13262-0180	7	16049-1051	12	35019-0080	21	43015-0170	28	44071-1361-56D	33
13070-1233	27	13262-0181	7	16065-1372	1	35023-0374-290	21	43015-1606	30	44071-1362-56D	33
13070-1309	11	13262-0298	7	16115-018	11	35063-1137	15	43020-0016	28	45014-0562-52M	27
13070-1314	5	13262-0299	7	16142-1144	11	36001-0591-266	37	43020-1094	30	46003-0205-18R	32
13070-1381	30	16187-0300	7	16187-0557	12	36001-0592-266	37	43022-1010	28	46012-0011-21	32
13078-1004	5	13270-1899	18	16187-0558	12	39007-1262	19	43026-0020	28	46012-0342-21	32
13087-1170	6	13270-1905	2	16187-0559	12	39061-0592	15	43026-1058	30	46019-0023	32

'19 KX85 DKF

Numerical Parts Index

Part No.	Fig No.	Part No.	Fig No.	Part No.	Fig No.	Part No.	Fig No.	Part No.	Fig No.	Part No.	Fig No.
46075-0615	32	56054-2260	40	92015-1406	17	92037-147	12	92055-1334	27	92143-1935	24
46076-1203	32	56071-0028	39	92015-1432	17	92037-1486	2	92055-1389	12-1	92143-1936	24
46092-1165	32	56071-0416	39	92015-1433	19	92037-1589	15	92055-1441	33	92143-1938	25
46102-0618	27	56071-0694	39	92015-1433	24	92037-1710	30	92055-1461	3	92143-1995	9
46102-1291	19	56075-4467	40	92015-1528	28	92037-1712	12	92055-1502	33	92144-1178	12-1
46102-1409	6	56075-4468	40	92015-1574	12	92037-1843	1	92057-1497	25	92144-1566	12-1
480J1200	5	56075-4469	40	92015-1596	32	92037-1969	12	92058-1086	25	92144-1752	26
480J1500	5	56075-4470	40	92015-1679	27	92038-001	13	92059-1941	12-1	92144-1782	12-1
480J1600	5	58029-0011-266	41	92015-1684	16	92042-007	10	92063-1338	12-1	92145-0089	11
481J2400	11-1	59051-1026	5	92015-1713	27	92043-0004	30	92063-1359	12-1	92145-0951	20
481J3500	25	59051-1146	4	92015-1839	33	92043-1207	12	92063-1360	12-1	92145-0952	20
481J3700	24	59051-1147	5	92022-077	1	92043-1264	10	92063-1361	12-1	92145-0954-10	27
482J5000	1	59051-1412	11	92022-077	11	92043-1356	29	92063-1362	12-1	92145-0955-10	27
49006-0078	28	59101-0003	32	92022-1028	30	92043-1643	20	92063-1363	12-1	92145-0956-10	27
49006-1017	32	59231-0019	34	92022-107	17	92045-0010	11	92063-1364	12-1	92145-0957-10	27
49006-1054	29	59256-1064	11	92022-1088	32	92045-1058	8	92064-1138	12-1	92145-1058	5
49006-1055	29	600A0800	5	92022-125	21	92045-1059	10	92064-1139	12-1	92145-1260	29
49006-1088	31	600A1000	11-1	92022-1275	33	92045-1062	24	92064-1140	12-1	92145-1340	3
49006-1089	31	601A6001	6	92022-1380	11	92045-1118	10	92064-1141	12-1	92150-1144	31
49006-1097	32	601B6202UU	25	92022-1561	17	92045-1226	10	92065-058	10	92150-1221	16
49006-1313	11	601B6301UU	24	92022-1690	34	92045-1304	10	92066-1437	10	92150-1339	21
49016-1044	28	610A0408	1	92022-1814	28	92045-1305	11	92070-1228	14	92150-1340	30
49047-1063	8	610A0408	11-1	92022-1829	20	92045-1360	10	92070-1241	14	92150-1340	36
49047-1064	8	610A0408	8	92022-1873	33	92045-1450	10	92071-042	10	92150-1359	17
49085-0006	15	670B2012	26	92022-237	3	92046-0046	11	92072-0055	32	92150-1392	3
49089-0816-25M	15	670E3034	3	92022-304	1	92046-1046	18	92072-056	15	92150-1412	19
49089-0817-25M	15	92001-1006	17	92025-1780	6	92046-1144	19	92072-1229	34	92150-1435	15
49091-0001	28	92001-1179	18	92025-1817	31	92046-1192	19	92072-1293	17	92150-1435	41
49091-0001	30	92002-1222	1	92026-1136	4	92046-1217	11	92075-1414	31	92150-1451	28
49110-0014	11	92002-1237	9	92026-1602	7	92046-1254	6	92075-1787	34	92150-1452	28
49111-1064	11	92002-1659	10	92027-120	3	92049-002	11	92075-209	15	92150-1467	9
49114-0005	11	92004-0730	25	92027-1757	21	92049-0069	19	92081-020	5	92150-1474	32
49116-0038	33	92004-1252	10	92027-1940	9	92049-1188	10	92081-076	9	92150-1482	17
49123-1054	12	92004-1253	1	92027-1966	34	92049-1238	1	92081-122	5	92150-1487	17
51001-0776	34	92004-1254	10	92028-1656	33	92049-1257	24	92081-1492	6	92150-1506	13
51023-0024	34	92005-0050	1	92028-1811	6	92049-1262	11	92081-1502	31	92150-1506	21
51048-0009	34	92009-1014	1	92033-0005	4	92049-1292	10	92081-1555	12-1	92150-1506	37
52005-0019	11	92009-1286	31	92033-0079	30	92049-1328	19	92081-1716	9	92150-1673	5
53066-0455-49F	35	92009-1476	32	92033-028	7	92049-1366	11	92083-012	9	92150-1711	19
54011-0572	36	92009-1563	10	92033-0737	33	92049-1394	33	92093-1200	3	92150-1715	6
54012-0595	36	92009-1568	33	92033-1079	7	92049-1414	11	92093-1426	33	92150-1888	1
55020-0896-6D	33	92009-1607	5	92033-1091	27	92049-1468	5	92093-1436	19	92151-1103	32
55020-0897-6D	33	92009-1795	28	92033-1186	30	92049-1469	25	92104-002	38	92151-1180	11
55020-1247-6D	31	92009-1828	18	92033-1211	27	92051-005	10	92110-0571	38	92151-1256	2
550AA2015	30	92009-1971	34	92036-018	12	92055-022	7	92116-1065	16	92151-1413	19
550AA2518	17	92015-077	13	92037-1163	32	92055-0741	30	92122-1213	17	92151-1572	26
550AA2520	24	92015-1014	18	92037-1173	1	92055-0786	27	92143-1055	9	92151-1799	29
550AA2520	25	92015-1259	2	92037-1173	14	92055-1123	33	92143-1196	37	92151-1799	31
550S3020	20	92015-1339	21	92037-1318	10	92055-1156	33	92143-1432	17	92151-1822	3
56030-1230	39	92015-1401	25	92037-1396	12	92055-1167	12-1	92143-1676	18	92151-1877	33

Accessory	41
Air Cleaner	2
Brake Pedal	26
Cables	36
Carburetor	12/12-1
Clutch	6
Crankcase	10
Crankshaft/Piston(s)	4
Cylinder Head/Cylinder	1
Decals	40
Engine Cover(s)	11/11-1
Engine Mount	17
Fenders	21
Footrests	20
Frame	16
Front Brake	29
Front Fork	33/33-1
Front Hub	24
Front Master Cylinder	28
Fuel Tank	34
Gear Change Drum/Shift Fork(s)	8
Gear Change Mechanism	9
Generator	13
Handlebar	32
Ignition System	14
Kickstarter Mechanism	5
Labels	39
Manual(EU)	42
Muffler(s)	3
Owner's Tools	38
Radiator	15
Rear Brake	31
Rear Hub	25
Rear Master Cylinder	30
Seat	35
Shock Absorber(s)	27
Side Covers	37
Stand(s)	22
Suspension	19
Swingarm	18

Tires	23
Transmission	7

Kawasaki Heavy Industries, Ltd.
Motorcycle & Engine Company

Part No. 99912-0222-01

©2018, Kawasaki Heavy Industries, LTD

'19 KX85 DKF(AL)

(KX85-II)