

SHELBY BROTHERS

SIZE GUIDE





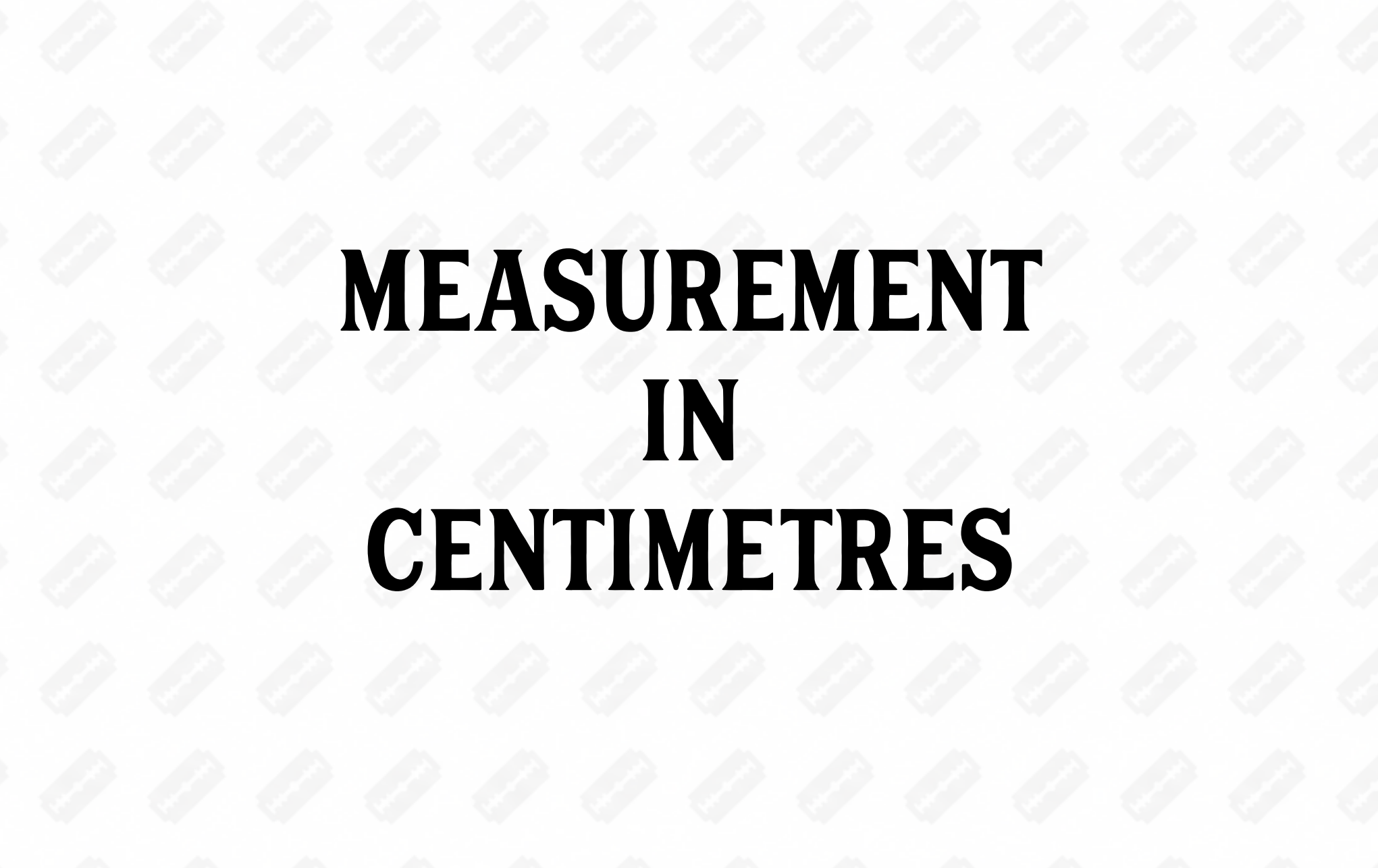
CONTENTS

CENTIMETRES

PART 1: SUITS	4-5
PART 2: WAISTCOATS	6
PART 3: TROUSERS	7

INCHES

PART 1: SUITS	9-10
PART 2: WAISTCOATS	11
PART 3: TROUSERS	12

The background of the slide features a repeating pattern of light grey rulers, oriented diagonally from the top-left to the bottom-right. Each ruler shows markings for centimeters and millimeters.

MEASUREMENT IN CENTIMETRES



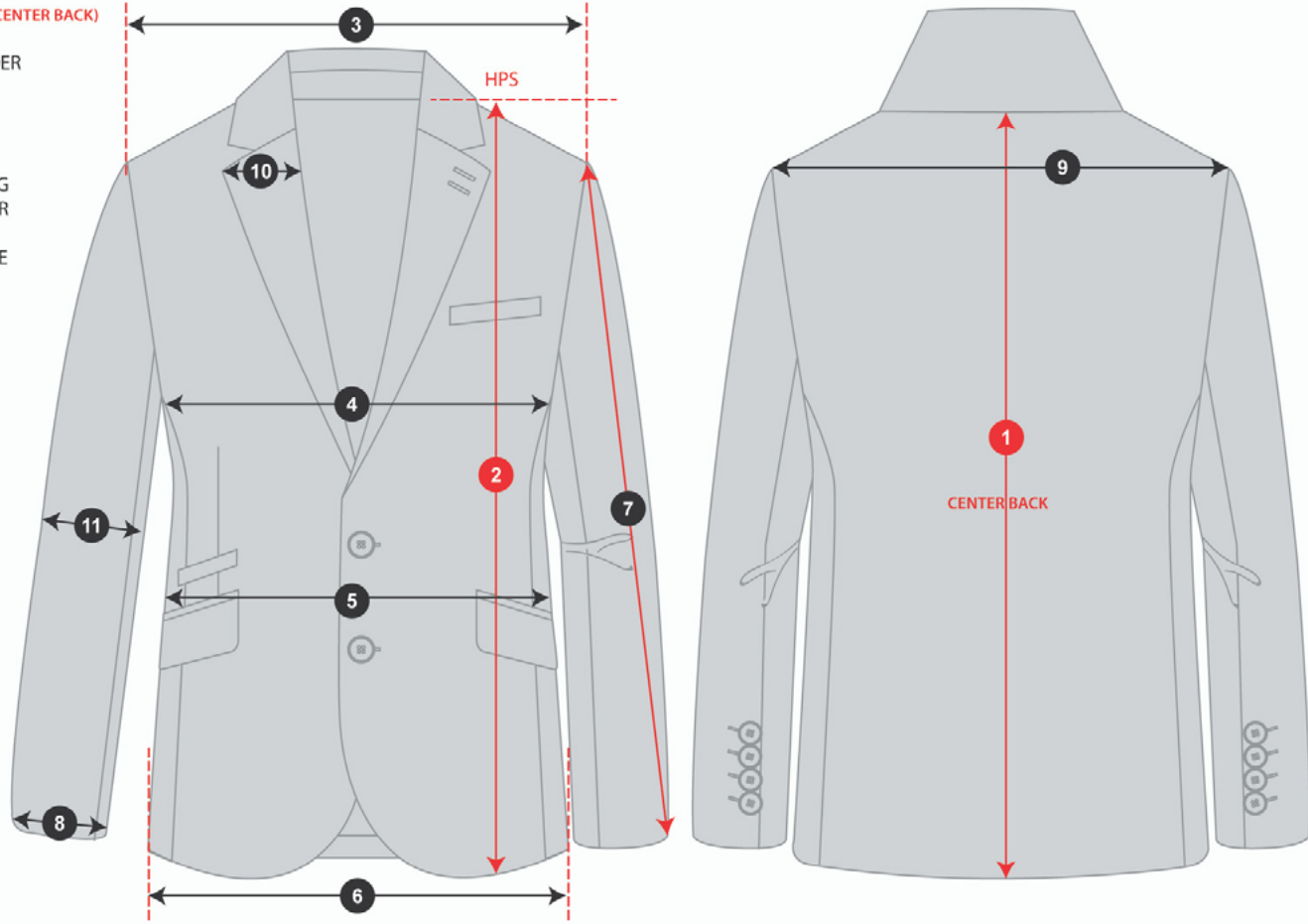
PART 1: SUITS

MEASUREMENTS
IN CENTIMETRES

DIMENSION
TOLERANCE: ± 0.5 CM

	UK SIZE	34	36	38	40	42	44	46	48	50	52
	EU SIZE	44	46	48	50	52	54	56	58	60	62
FRONT LENGHT		73,5	74,5	75,5	76,5	77,5	78,5	80	81	82	83
BACK LENGHT		71	72	73	74	75	76	77	78	79	80
SHOULDER		44	45	46	47,5	48,5	50	51	52,5	53,5	54,5
CHEST (1/2)		50	52	54	56	58	60	62,5	64,5	66,5	68,5
WAIST (1/2)		43	45	47	49	51,5	53,5	56	58	60	62
BOTTOM		50,5	52	54	56	58	60	62,5	64,5	66,5	68,5
SLEEVE LENGHT		64	64,5	65	65,5	66	66,5	67	67,5	68	68,5
SLEEVE OPENING		12,7	13	13,2	13,5	13,7	14	14,2	14,5	14,7	15

1. BACK LENGTH (CENTER BACK)
2. FRONT LENGTH
3. FRONT SHOULDER
4. CHEST 1/2
5. WAIST 1/2
6. BOTTOM 1/2
7. SLEEVE LENGTH
8. SLEEVE OPENING
9. BACK SHOULDER
10. LAPEL WIDTH
11. MIDDLE SLEEVE





PART 2: WAISTCOATS

MEASUREMENTS
IN CENTIMETRES

DIMENSION
TOLERANCE: ± 0.5 CM

	UK SIZE	34	36	38	40	42	44	46	48	50	52
	EU SIZE	44	46	48	50	52	54	56	58	60	62
FRONT LENGHT		62	63,5	65	66	67,5	68,5	70	71	72,5	73,5
BACK LENGHT		57	58,5	59,5	61	62	63,5	65	66	67,5	68,5
SHOULDER		10	10,5	11	11,5	12	12,5	13	13,5	14	14,5
CHEST (1/2)		45,5	47,5	50	52	54	56	58	60	62	64
WAIST (1/2)		44,5	46,5	49	51	53	55	57	59	61	63
BOTTOM		45,5	47,5	50	52	54	56	58	60	62	64
SLEEVE LENGHT		35	36	37	38	39	40	41	42	43	44
SLEEVE OPENING		28	29	30	31	32	33,5	34,5	35,5	36,5	37,5



PART 3: TROUSERS

MEASUREMENTS
IN CENTIMETRES

DIMENSION
TOLERANCE: ± 0.5 CM

	UK SIZE	34	36	38	40	42	44	46	48	50	52
	EU SIZE	44	46	48	50	52	54	56	58	60	62
WAIST		74	79	84	89	94	99	104	109	114	119
FRONT RISE (NOT INCL W'BAND)		22	22,5	23	23,5	24	24,5	25	25,5	26,5	27
BACK RISE (NOT INCL W'BAND)		35	36	37	38	39	40	41	42	43	44
THIGH (2.5 CMS BELOW CROTCH)		30	31	32	33	34	35	36	37	38	39
HIP (20 CMS BELOW W'BAND CIRCULAR)		96	100	105	109	113	118	122	126	130	134
INSIDE LEG REGULAR		81,5	81,5	81,5	81,5	81,5	81,5	81,5	81,5	81,5	81,5
KNEE (1/2 AT INSIDE LEG)		20	20,5	21	21,5	22,5	23	23,5	24	24,5	25
HEM WIDTH		17	17,5	18	18,5	19	19,5	20	20,5	20,5	21

The background of the image features a repeating pattern of light gray razor icons, oriented diagonally from the top-left to the bottom-right. The text is centered and reads:

**MEASUREMENT
IN
INCHES**

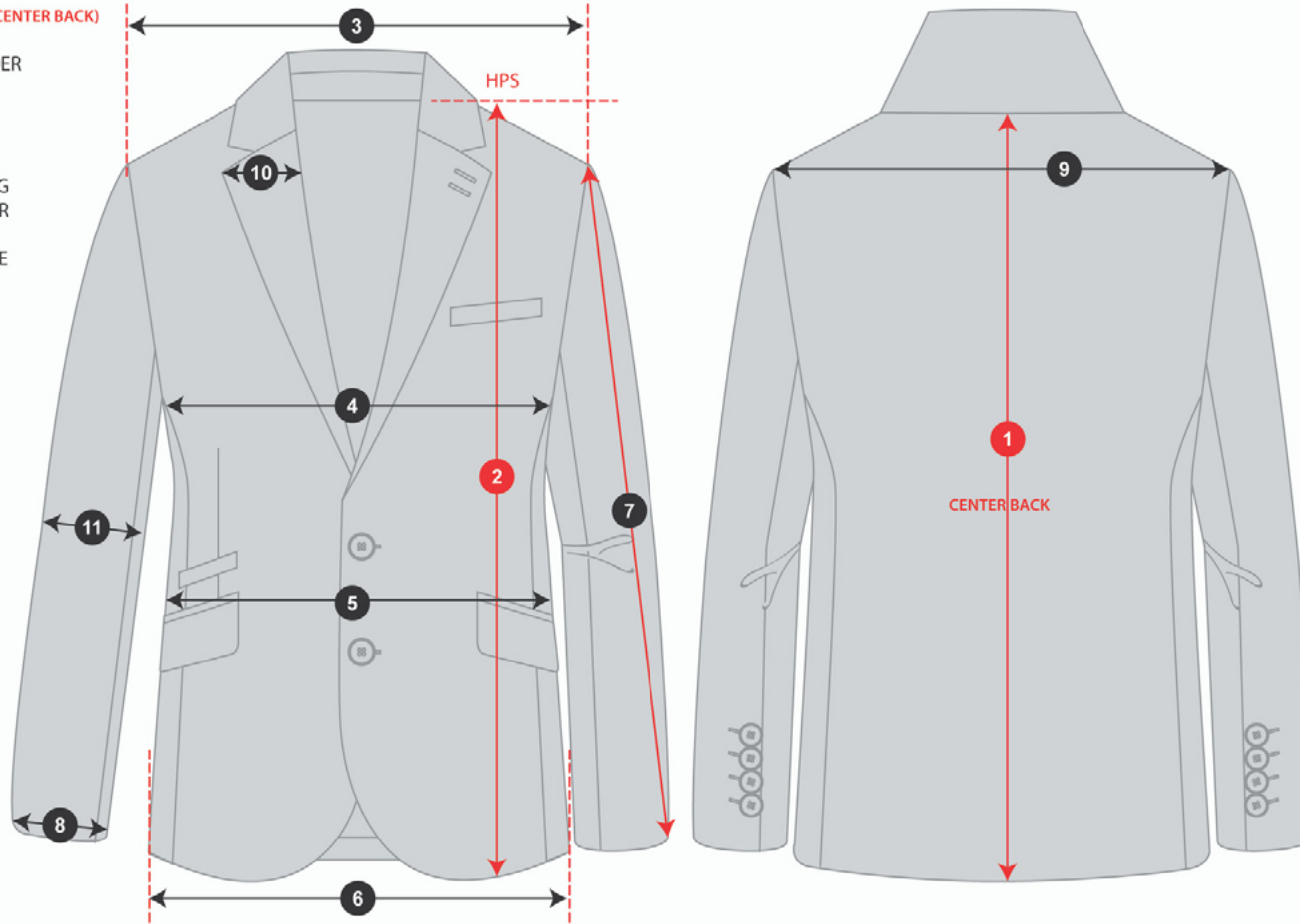


PART 1: SUITS

MEASUREMENTS
IN INCHES

	UK SIZE	34	36	38	40	42	44	46	48	50	52
	EU SIZE	44	46	48	50	52	54	56	58	60	62
FRONT LENGHT		29	29.4	29.8	30.2	30.6	31.0	31.4	31.8	32.2	32.6
BACK LENGHT		28.0	28.4	28.8	29.2	29.6	30.0	30.4	30.8	31.2	31.6
SHOULDER		17.4	17.8	18.2	18.7	19.2	19.7	20.2	20.6	21.0	21.4
CHEST (1/2)		19.8	20.5	21.1	22.0	22.8	23.6	24.6	25.4	26.2	27.0
WAIST (1/2)		17.0	17.8	18.6	19.4	20.2	21.0	22.1	22.9	23.7	24.5
BOTTOM		19.8	20.5	21.3	22.0	22.8	23.6	24.6	25.4	26.2	27.0
SLEEVE LENGHT		25.2	25.4	25.6	25.8	26.0	26.2	26.4	26.6	26.8	27.0
SLEEVE OPENING		5.0	5.1	5.2	5.3	5.4	5.5	5.6	5.7	5.8	5.9

1. BACK LENGTH (CENTER BACK)
2. FRONT LENGTH
3. FRONT SHOULDER
4. CHEST 1/2
5. WAIST 1/2
6. BOTTOM 1/2
7. SLEEVE LENGTH
8. SLEEVE OPENING
9. BACK SHOULDER
10. LAPEL WIDTH
11. MIDDLE SLEEVE





PART 2: WAISTCOATS

MEASUREMENTS
IN INCHES

	UK SIZE	34	36	38	40	42	44	46	48	50	52
	EU SIZE	44	46	48	50	52	54	56	58	60	62
FRONT LENGHT		24.5	25.0	25.5	26.0	26.5	27.0	27.5	28.0	28.5	29.0
BACK LENGHT		22.5	23.0	23.5	24.0	24.5	25.0	25.5	26.0	26.5	27.0
SHOULDER		4.0	4.2	4.4	4.6	4.8	5.0	5.2	5.4	5.6	5.8
CHEST (1/2)		18.0	18.8	19.6	20.4	21.2	22.0	22.8	23.6	24.4	25.2
WAIST (1/2)		17.6	18.4	19.2	20.0	20.8	21.6	22.4	23.2	24.0	24.8
BOTTOM		18.0	18.8	19.6	20.4	21.2	22.0	22.8	23.6	24.4	25.2
SLEEVE LENGHT		13.7	14.1	14.5	14.9	15.3	15.7	16.1	16.5	16.9	17.3
SLEEVE OPENING		11.1	11.5	11.9	12.3	12.7	13.1	13.5	13.9	14.3	14.7



PART 3: TROUSERS

MEASUREMENTS
IN INCHES

WAIST

FRONT RISE (NOT INCL W'BAND)

BACK RISE (NOT INCL W'BAND)

THIGH (2.5 CMS BELOW CROTCH)

HIP (20 CMS BELOW W'BAND CIRCULAR)

INSIDE LEG REGULAR

KNEE (1/2 AT INSIDE LEG)

HEM WIDTH

UK SIZE	34	36	38	40	42	44	46	48	50	52
EU SIZE	44	46	48	50	52	54	56	58	60	62
WAIST	29.1	31.1	33.1	35.0	37.0	39.0	40.9	42.9	44.9	46.9
FRONT RISE (NOT INCL W'BAND)	8.7	8.9	9.1	9.3	9.4	9.6	9.8	10.0	10.4	10.6
BACK RISE (NOT INCL W'BAND)	13.8	14.2	14.6	15	15.4	15.7	16.1	16.5	16.9	17.3
THIGH (2.5 CMS BELOW CROTCH)	11.8	12.2	12.6	13	13.4	13.8	14.2	14.6	15	15.4
HIP (20 CMS BELOW W'BAND CIRCULAR)	37.8	39.4	41.3	42.9	44.5	46.5	48.0	49.6	51.2	52.8
INSIDE LEG REGULAR	32.1	32.1	32.1	32.1	32.1	32.1	32.1	32.1	32.1	32.1
KNEE (1/2 AT INSIDE LEG)	7.9	8.1	8.3	8.5	8.9	9.1	9.3	9.5	9.7	9.8
HEM WIDTH	6.7	6.9	7.1	7.3	7.5	7.7	7.9	8.1	8.1	8.3