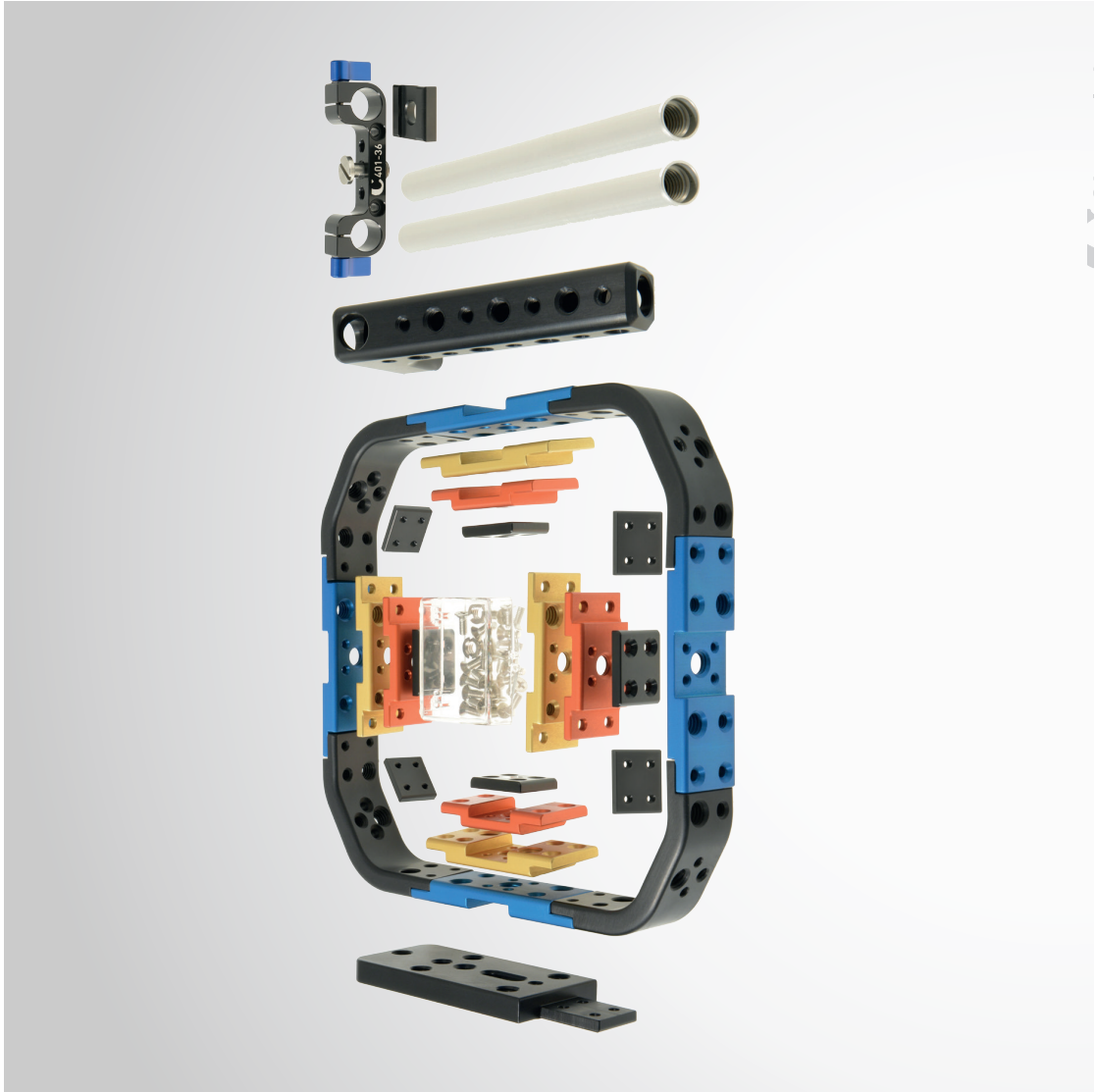


 Chrosziel  
... for optical excellence

THE  
CUSTOM  
GUSGAGE





From the day Chrosziel was established 40 years ago, we have strictly focused on our users and their needs. That is why Chrosziel today is known around the globe for high precision camera accessories distinguished for their intuitive handling and endurance.

Our aim is to constantly deliver exceptional user experience to camera professionals at every step. From sophisticated design to superior quality materials and workmanship.

Together with our customers we have developed a modular cage for DSLR and compact-sized cameras like Canon EOS C300 or Blackmagic Cinema.

The cage system does not only break free from many limitations users so far had to live with, but it offers also many advantages:

- Fits all DSLR and compact-sized cameras
- Modularity provides excellent investment protection
- Super light-weight due to special hardened aluminum alloy
- 360° positioned multiple-sized threads



## Chrosziel CustomCage

### READY TO USE KITS FOR....

#### Blackmagic CC

Configured and assembled

700-10

Consisting of

- 700-00-01 Baseplate
- 700-00-02 Carrying Handle with short 3/8" screw
- 700-00-03 Four Black Corners
- 700-00-05 Two Locking Bars blue
- 700-00-06 Two Locking Bars gold
- Set of M4 connecting screws



#### EOS C Series

Configured and assembled

700-30

Consisting of

- 700-00-01 Baseplate
- 700-00-02 Carrying Handle with short 3/8" screw
- 700-00-03 Four Black Corners
- 700-00-05 Two Locking Bars blue
- 700-00-07 Two Locking Bars red
- Set of M4 connecting screws





## **DSLR Cameras (e.g. Nikon D-800)**

Configured and asymmetrically assembled

**DSLR1 for Canon 5D MK II / III, Nikon D800 and other cameras with similar body size**

**700-20**

**Consisting of**

- 700-00-01 Baseplate
- 700-00-02 Carrying Handle with short 3/8" screw.
- 700-00-03 Four Black Corners
- 700-00-06 Two Locking Bars gold
- 700-00-07 Two Locking Bars red
- 700-00-08 Four Locking Bars black
- 700-00-09 Four Extension Plates
- Set of M4 connecting screws

# Chrosziel CustomCage COMPONENT PARTS



700-00-00  
Cage in case





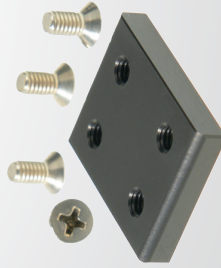
700-00-03  
4 Black Corners with 90° - short leg 30° - long leg 60° for perfect match to the various camera shapes



700-00-01  
1 Baseplate with 1/4" an 3/8" screws for Chrosziel LWS and various threads for tripod plate



700-00-08  
Locking Bar Black



700-00-09  
Extension Plate 24 x 30 mm including screws to connect each two Locking Bars

# Chrosziel CustomCage

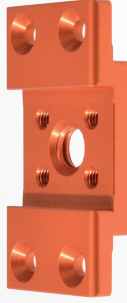
## COMPONENT PARTS



700-00-05  
4 Locking Bars blue incl. 4 connecting screws  
Extends Cage by 70 mm



700-00-06  
4 Locking Bars gold incl. 4 connecting screws  
Extends Cage by 50 mm



700-00-07  
4 Locking Bars red incl. 4 connecting screws  
Extends Cage by 35 mm



700-00-02  
1 Carrying Handle with short 3/8" screw



## ACCESSORIES

700-00-10  
Rosettes (1 pair) for Black Corners



700-00-11  
Rosettes (1 pair) for Locking Bars



700-00-12  
Flash Shoe incl. 2 screws 1/4" and an 3/8" thread adaptor



700-00-13  
Long Screw 3/8" - 16UNC - l. 29mm



700-401-36  
Accessory Bridge for 15 mm rods, with short and long 3/8" screws and Anti-wist insert, double-sided Rod Clamping



700-403-04  
Set of 2 Handles with Hirth Rosettes (Arri compatible), dual joint



**Chrosziel CustomCage**

## **SHOULDER PAD & LWS**

### **Shoulder Shooting**

3033 Shoulder Pad

With back support and swivel-ball-clamp for 15mm rods (also in conjunction with HandleBar proVideo plus 403-20). Please see website [www.chrosziel.com](http://www.chrosziel.com)

### **Tripod Shooting**

Light Weight Supports are equipped with  $\varnothing$  15 mm rods, length 205 and provide the correct height for the respective camera LWS HD are equipped with a second rod support.  $\varnothing$  15 mm rods with 500 mm overall length (310 mm and 190 mm)



**401-444 HD - LWS HD Universal**

Adjustable for all cameras with optical axis-height between 45 and 66 mm (e.g. Blackmagic CC)

**401-440 - LWS Universal**

Adjustable for compact cameras like the Blackmagic CC with optical-axis-height between 44 and 69 mm. Rods  $\varnothing$  15 mm, 205 mm long

**401-94A - LWS,**

LWS reinforced for Canon EOS C300, C100, C500, SONY F5 and F55. Version HD with second rod support available

**401-421S LWS for DSLR cameras Canon EOS 5D MKII/III, 7D, 550D,**

Nikon D90, D60, D7000 550D, and others : cpl. with twist stopper and adjustable rods

**401-421N LWS for DSLR camera Nikon D800 cpl. with twist stopper + adjustable rods**



 **Chrosziel**  
... for optical excellence

**Chrosziel GmbH**  
Klausnerring 6  
85551 Kirchheim b. München  
Deutschland

Telefon: +49 89 90 10 910  
Fax: +49 89 447 08 61

[www.chrosziel.com](http://www.chrosziel.com)