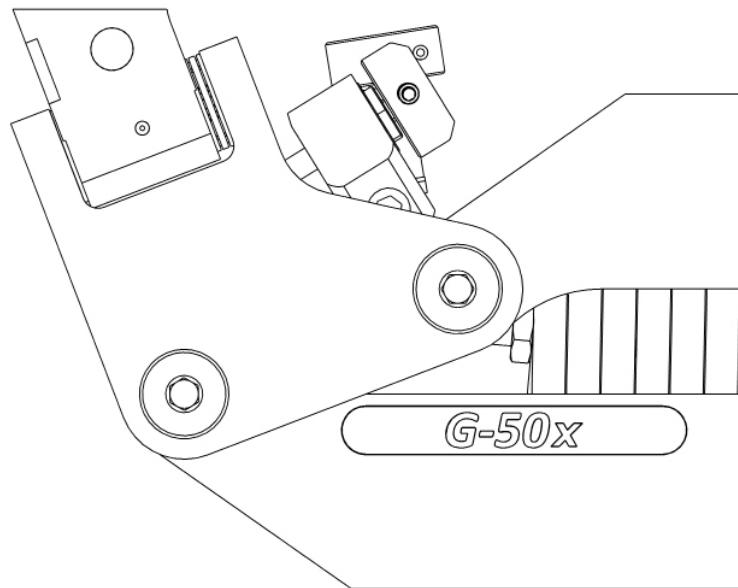


STEADICAM®

G-50x

Operating Manual



The Steadicam® G-50x Arm is the second release of Tiffen's G-Series arms. The revolutionary, patented Geo spring geometry optimizes performance throughout its lifting range. It tames high/low arm travel with adjustable-length crankshafts that dynamically rock the spring termination as the arm is boomed up or down. Powered by titanium springs, the G-50x arm smoothly carries any load from 12 to 50 pounds (5.4 to 23 kg).

The design criteria for the G-50x arm:

- **Light weight** (8.6 lb / 3.9 kg)
- **User-maintainable**
- 28.7 inch (72.8 cm) **boom range**
- **Ride** control that adjusts the iso-elastic response of the arm.
- **Soft bumpers** at each end of travel so the arm can be boomed right to its limits without shot-disturbing clunks.
- The **arm posts** are locked or released by a single button, so switching arm posts is quick and easy. This quick-change mechanism also has an **adjustable drag** for the post's rotation, from completely free to totally locked.

Note: Iso-elasticity can be defined as the vertical bandwidth throughout which lifting power closely approximates load.

The net result: a smooth, well performing arm, with all parameters user adjustable.

*Steadicam, G-50x™
Iso-Elastic Stabilizer Arm*

*tiffen.com/steadicam
steadicam.com
Email: techsupport@tiffen.com*

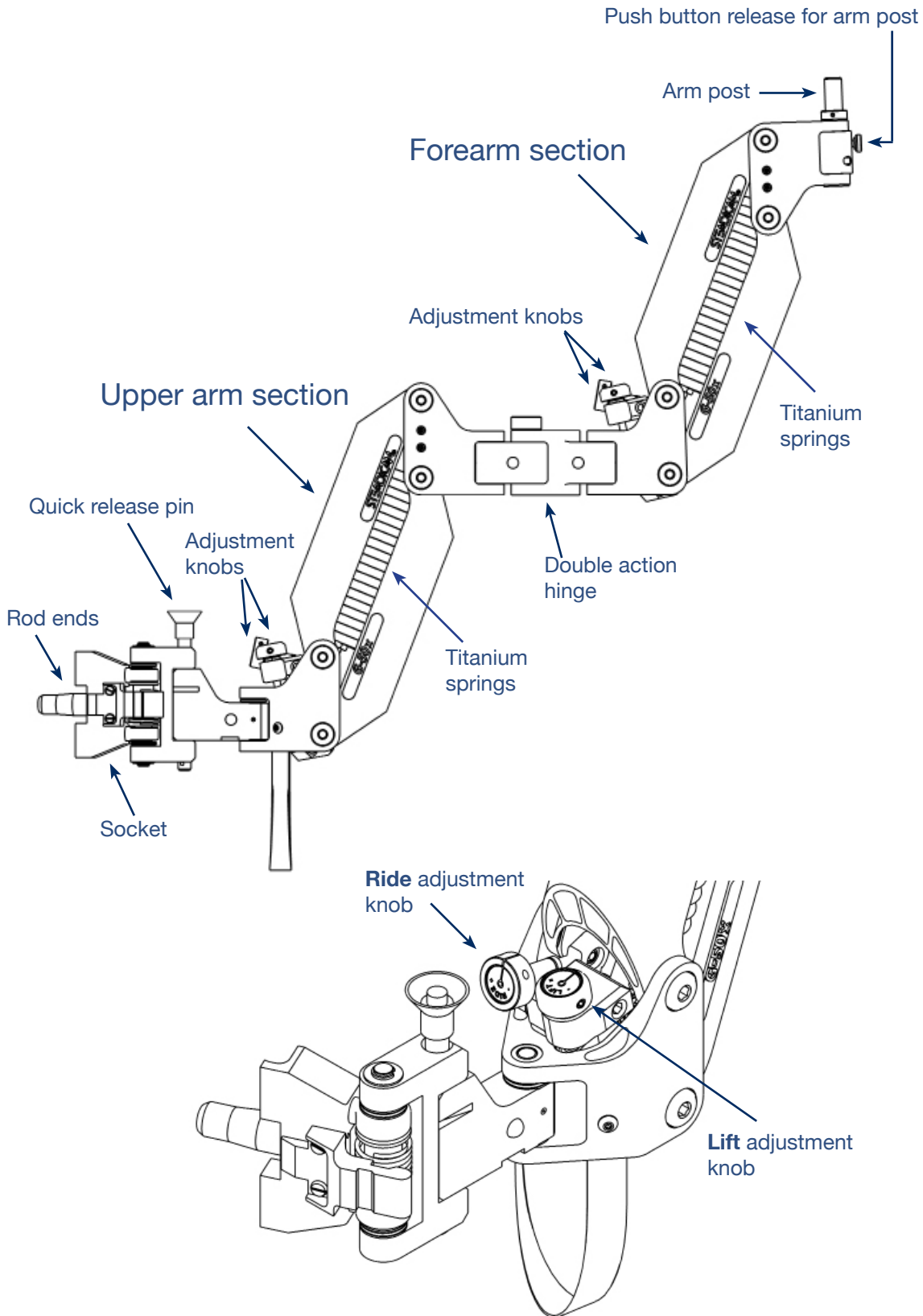
*The Tiffen Company
90 Oser Avenue
Hauppauge, New York 11788
631 273-2500 or 800 645-2522
631 273-2557 fax*

*Tiffen Steadicam
2815 Winona Avenue
Burbank, CA 91504
818 843-4600 or 800 593-3331
818 843-8321 fax*

*Tiffen International Ltd.
Pinewood Studios
Pinewood Road
Iver Heath SL0 0NH
United Kingdom
44 870 1001220
44 1869 321766*

The G-50x Arm

The Parts



Adjusting the ride or “iso-elasticity”

Setting Ride

The G-70x and G-50x arms have an adjustable active link as part of the “Geo” feature. This adjustable link gives the operator greater control over the dynamic changes, and thus more control over the arm’s performance.

We want to achieve three things in setting a G-series arm:



1. We want both arm segments to lift the sled and “float” at the same angle. (This is true of all arms.) The default angle is about 5 -10 degrees up from horizontal, but this angle can be varied up or down 30 degrees or more as needed by the shot.
2. We want both arm segments to work or track together, without lagging, leading, or hanging up.
3. We want to exert the least amount of effort to boom the arm fully up or down. Or to put it another way, we want the most iso-elasticity the geometry of the arm will allow. With the Ride set to the maximum possible setting for the required lift, there is not only less effort to boom up or down, but there also is less vertical reactivity in the arm as one walks, climbs a curb, goes over a bump, etc. The result is less dampening work for the operator and more vertical control.

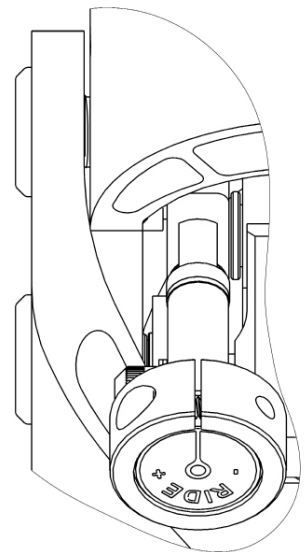
The basic adjustments: Ride and Lift

Each arm segment has two adjusting knobs. The Ride knob alters iso-elasticity from a hard ride to a super iso-elastic ride, and the Lift knob dials lifting power continuously from 12 to 50 pounds (5.4 to 22 kg) with the G-50x arm and 13 to 70 pounds (5.8 to 32 kg) with the G-70x arm.

Adjustment of Ride:

If you can, preset Ride close to the desired level of iso-elasticity in both arm segments before picking up the sled and adjusting Lift. Because the ride knob can only be turned when the arm segment is raised to its highest, unloaded position, it is easiest to adjust before you pick up the sled. Ride also can be adjusted when carrying the sled by booming up fully. We’ve found it’s often easier to roll the knobs rather than use the classic “pinch and twist” technique.

Start by presetting the both Ride knobs to the middle of their travel (about 12 threads visible). Once you get the iso-elastic feel you like, make a note of the threads and the camera weight for future reference.





Adjusting the ride: the arm must be angled up at the top of its range.

Note: the ride knob is horizontal, the lift knob is nearly vertical.



Adjustment of Lift:

All lift adjustments must be done while wearing the rig, standing properly, and with your normal threads in the vest to arm connection.

Adjust the forearm segment first (the arm segment closest to the gimbal).

Hold the arm segment slightly above level. Slightly raise or lower the arm segment to find the sweet spot where it's easy to turn the knob. Adjust the arm's lifting power so that the forearm



arm segment seeks a position (or floats) slightly above horizontal. When the forearm segment is set correctly, adjust the upper arm segment to follow (track with) the upper arm segment as you boom fully up and down. At this point, don't worry if either arm segment tends to lock up or down, or dwells in the middle.

After the lift is set, re-adjust the Ride knob for the desired iso-elastic response.

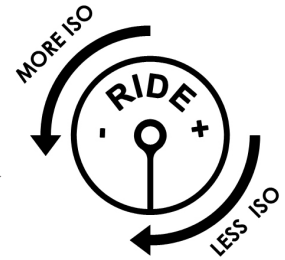


Note that the Lift knob has a range of adjustment of 30 turns. This means that each turn of the Lift knob will add or subtract about 1.25 pounds (.56 kg) of lift.

Adjusting iso-elastic response:

With the arm set to carry the load, we micro-adjust the Ride.

If we dialed in too much iso-elasticity, the arm segments will “hang up” at the upper or lower extremes of boom travel. If we dialed in too little iso-elasticity, the arm may not track well in the middle of its range. The only way to tell if the ride is set correctly is to wear the rig, boom up and down fully, and watch how the arm behaves.



To adjust the arm for maximum iso-elasticity at any given lift, we turn the Ride knob counterclockwise until the arm segment begins to “lock” up or down at the extremes of travel. We then turn the ride knob clockwise a couple of turns. This will keep the arm from locking up or down. We test and micro-adjust the lift and ride knobs as necessary.

Next, we watch the arm segments as we boom up and down. If the upper arm segment hesitates or dwells in the middle of its boom range, it is not iso enough to work with the forearm segment. We can either increase the iso of the upper arm segment or decrease the iso of the forearm segment to correct the problem.

Typically we try to increase the upper arm segment first – to have the most iso in the whole arm. But if we can’t increase the iso, that is, if the upper arm locks up at the extremes of travel, we must decrease the iso in the forearm segment until the upper arm does not hesitate or dwell in the middle of its travel.

Lift and ride interact to some degree, so some tweaking of lift may be needed after setting the ride.

Typically, the G-Series arms are very forgiving of less than perfect adjustments of lift and ride.

Some tips in setting up the G-Series arms:

To minimize any lifting required with heavier cameras and/or to hold high boom heights, we often set the arm segments to float at a higher nominal angle (+25 degrees or more!). We find pushing down is easier than lifting fully with the extended boom range possible with the G-Series arms.

The arm can also be adjusted to hang lower than normal for shots with low boom heights, with very little penalty in performance.

Ride does not have to be adjusted if you set the float point higher or lower than “normal.” Minor changes in sled weight (\pm several pounds) also do not require adjustment of the Ride knob: it’s not something you change during the average day.

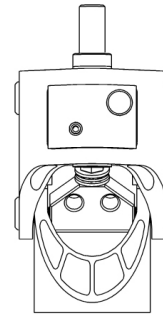
Some operators prefer a centered ride setting for a feel similar to a IIIA arm. In addition, a centered ride setting is preferred while using a hard mount on rough terrain. Our advice: experiment and use the arm the way it helps you operate and get the shot. However, our preference is to have the maximum iso in all situations.

Physical reality: With the same ride setting, all G-Series arms become progressively less iso-elastic as the arm’s lift is increased. Heavier loads will require turning the Ride knob to increase iso-elasticity. Lighter loads need the Ride knob turned to reduce iso-elasticity. Learn to adjust the Ride knob to obtain — or maintain — your desired iso-elastic performance as the load changes.

Working with arm posts:

To change posts, press the release button to remove the post. Note: the mechanism will remain in place.

To set the rotational drag, turn the drag knob clockwise to increase drag and counterclockwise to decrease drag. Changing a post does not affect the drag setting.



Some adjustment tips:

When adjusting from a light load to a heavy load: It helps to have an assistant independently control the height of the upper arm and make his lift adjustment at the same time as you adjust the forearm lift.

It also helps if you raise your docking stand so you can stand next to it and insert the arm post into the gimbal yoke of your docked sled with your heavy camera aboard. As you and your assistant adjust the lift of both arm segments, they will gradually pick up the weight until it floats free of the dock.

When adjusting from a heavy load to a light load: Leave the heavy load aboard if possible, and with the sled on the stand, remain adjacent to the stand while you lighten the lift of both arm sections at the same time. Then remove the heavy weight and rebalance the sled for the light camera and then see if the lift needs further adjustment.



Lift can be altered by forcefully holding the arm segments at the correct angle while adjusting, but be prepared for some exertion! You might be shocked how energetic the springs feel if you are raising or lowering the lift by 30 pounds (13.6 kg)!

Steadicam®, G-50x, G-70x and Iso-Elastic are trademarks of the Tiffen Company, LLC.

Disclaimer: There is no implied or expressed warranty regarding this material. Specifications, accessories, etc. are subject to change without notice.