

EXPLORE THE ROAD LESS TRAVELLED





The quest to create something unique follows a road less travelled.

At CHAPTER2, it begins with the perfect frame, before handing it over for you to put all the pieces in place. Every detail is an opportunity for your individuality. You can trial different technologies and, when proven, apply them. From the tyres up, you can pick and choose the components that bring out the best in your performance. Just follow your instincts. In the end you'll have a machine covered with your fingerprints and set-up exactly the way you desire. In fact, it won't be like any other bike on the planet.



**"HAVING RIDDEN THE TERE THROUGH ALMOST EVERY CONDITION AND TERRAIN, IT IS SMOOTH, PREDICTABLE AND PROVIDES COMFORT THAT YOU KNOW IS SAVING YOU ENERGY FOR WHEN YOU'LL NEED IT MOST."**

Michael Torckler



TERE, West Coast, New Zealand



## PAEMAUNGA - MOUNTAIN RANGE

The CHAPTER2 pattern symbolises “The Road Less Travelled”. The story begins with the pattern that starts the design. ‘The Raranga’ on both ends symbolises that this ties into the land and that the land is woven into the fabric of the people.

The Mangopare Kowhaiwhai comes next. This shows direction and travel just like the hammer head shark which this pattern is inspired by. It symbolises that travel is about moving forward and exploring new places.

The Paemaunga element that sits in three, symbolises a mountain range interlocked with the “Kete o te wananga” element, which symbolises knowledge and the acquisition of knowledge. Together they show that the mountain range is a road that you have much to learn from and that it is the road less travelled. The multiple Kowhaiwhai elements in the centre symbolises the rivers and the diversity of the New Zealand terrain, and finally the centre piece Kowhaiwhai symbolises the unity and respect between the land and its people.





TERE, West Coast, New Zealand



TERE



White & Aqua, Limited Edition

## TERE

TERE means “be quick, swift and fast” in Maori. TERE is a COMPACT-AERO frame designed to perform and look like a traditional road frame. However, each and every tube profile and transition has been aerodynamically optimised via collaboration with Auckland University Wind Tunnel, the same facilities where Team New Zealand tests their America’s Cup technology.

The TERE has been designed with quality of ride in mind. That means a well-balanced geometry, allowance for wider format tires and a carefully engineered Toray® carbon lay-up schedule throughout to deliver an engaging ride, letting you push beyond your limits and explore the road less travelled.

As with any new frame design project, the geometry is the foundation to an awesome ride. Using an extensive database of ergonomic data we were able to map out the ideal geometry that matches both the seasoned pro and weekend warrior. The TERE’s geometry has a linear stack and reach correlation from XS all the way to XL just like the human body.

Married to this balanced geometry is a beautiful form factor that elevates the whole experience, employing vibration dampening chainstays and directional high tensile carbon in the bottom bracket and head tube areas for power transfer and steering “like it’s on rails”.

Whilst the TERE has been designed to be an all round performer, no short cuts have been taken to ensure that it is also aerodynamic without the inherent penalties of a pure aero road frame, such as excess weight and harsh ride quality. The fork crown has been seamlessly sculpted to the kamm-tail and ribbed head tube to increase the overall stiffness and aerodynamics.

The whole package is finished off with a compliant carbon seatpost, aerodynamically integrated seatclamp, internal cabling and a matching stem and headset to create an elegant yet exhilarating ride.



Rim Brake



Disc Brake







TERE Disc, Green & Aqua, Limited Edition





RERE



Best Design Awards  
Winner 2018

Matt & Gloss Black, Essential Collection



## RERE

RERE means “to flow” in Maori. RERE is a FULL-AERO frame designed to cheat the wind. With Michael’s experience in designing a number of Aerodynamic Road and Time Trial/Triathlon rigs, the RERE is the culmination of knowledge and experience in this very specific genre of bikes.

Drag (air resistance) is the one thing that all cyclists battle against, and the RERE has been designed to slice through the air with aerodynamic profiles applied to the all exposed surfaces. It has been rigorously tested at Auckland University Wind Tunnel across a wide range of Yaw on both drive and non-drive sides.

The RERE has been designed with quality of ride in mind. This means a well-balanced geometry, allowance for wider format tires and a carefully engineered Toray® carbon lay-up schedule throughout to deliver an engaging ride, letting you push beyond your limits and explore the road less travelled.

Like the TERE, the RERE’s geometry has a linear stack and reach correlation from XS all the way to XL just like the human body.

Married to this balanced geometry is a beautifully designed aerodynamic form factor that accelerates the whole experience—employing vibration dampening “kinked” chainstays and directional high tensile carbon in the bottom bracket and head tube areas for engineered compliance, power transfer and steering “like it’s on rails”.

Whilst the RERE has been designed to be an aerodynamic race machine, no short cuts have been taken to ensure that overall sensation is silky smooth with climbing traits expected of a pro-level rig. The fork crown has been seamlessly sculpted to the aero fork leg and designed to be used with aerodynamically superior direct mount brakes that also offer more tire clearance.

The whole package is finished off with a compliant dual orientation (TT/Tri) carbon seatpost, concealed integrated seatclamp, internal cabling and a matching stem and headset to create an elegant yet exhilarating ride.

If you want the total package, we also offer the MANA Bar and Stem system for precision steering and engineered compliance in a form factor that slices through the air.



Rim Brake



Disc Brake





HURU

Matt + White, Essential Collection



## HURU

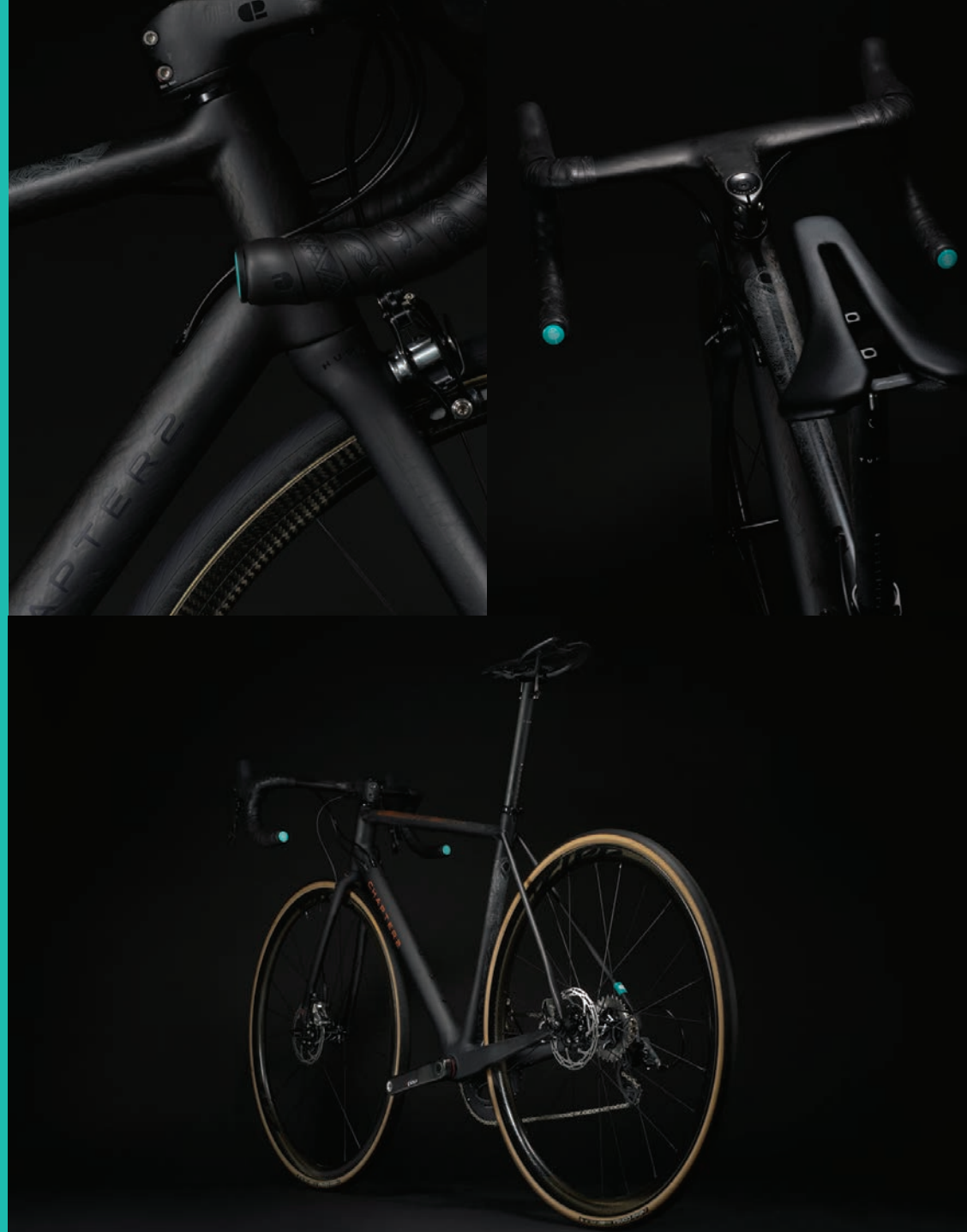
HURU means “feather” or “rising” in Maori, and that's exactly what its intended purpose is – lightness for those who love to climb, but designed with a healthy dose of agility to let you rise above the competition. Weight, or lack thereof, has been the holy grail of bicycle design since the beginning, with the often misguided belief that less grams alone will make a frame perform better. Low weight is only one of the complex ingredients in the art of frame design. Without careful consideration for a balanced geometry and stiffness, even the lightest bike can turn a beautiful climb into an anticlimatic experience.

We love to climb, because we also love to descend. The two polar opposites are not exclusive, since when there is a climb, there is always the prospect of a thrilling descent that makes the suffering all the more meaningful.

The HURU has been designed from the ground up, with a highly engineered silhouette resulting in a stiff and light-footed frame, a laterally stiff yet compliant fork and a lightweight two-bolt TUMU seatpost ensures the whole package tips the scales just where we want it – a synergy of form and function.

The geometry is borrowed from the speedy RERE with minor tweaks to ensure it has the climbing pedigree of a pro-level frame. Whilst the additional 0.5° of seat tube angle may seem marginal, the 73.5° angle matched to the 0mm setback post places you in a more efficient and comfortable position to tackle even the steepest cols.

Whilst svelteness was the key objective for the HURU, the PU molding process, strategic use of T1000 Toray® carbon and directional 3K carbon in the head tube and bottom bracket ensures that the HURU is no slouch in the sprinting and carving department, cornering confidently “like it’s on rails”.



Rim Brake



Disc Brake







MANA



MANA One Piece Bar & Stem, Matt Carbon

In the never ending search for more speed via optimised aerodynamics, CHAPTER2 introduces the MANA which means "power" in Maori.







## SPECIAL EDITION

At CHAPTER2 we believe that cycling is one of the purest sports. Just you, your bike and a healthy appetite for adventure and suffering. We know that your bike is an extension of your lifestyle, as it is ours. And we know how important it is to have bragging rights to the coolest looking kit on your local bunch ride or race.

CHAPTER2 bikes come in two different collections. The 'Essential Collection' is the tried and tested, but still uniquely CHAPTER2, with matt and gloss black finishes. The 'Limited Edition' designs are released every 6-8 months and are produced in strictly limited quantities.

We also offer a very rare range of 'Special Edition' frames celebrating significant international cycling events. Once these are sold out, they will never be produced again... ever. This gives you the unique opportunity to own a true design statement and stand out from the crowd. That's some real bragging rights for any cycling aficionado.



TERE, Le Tour Stage 17



TERE, British Racing Green









RERE, Giro 101

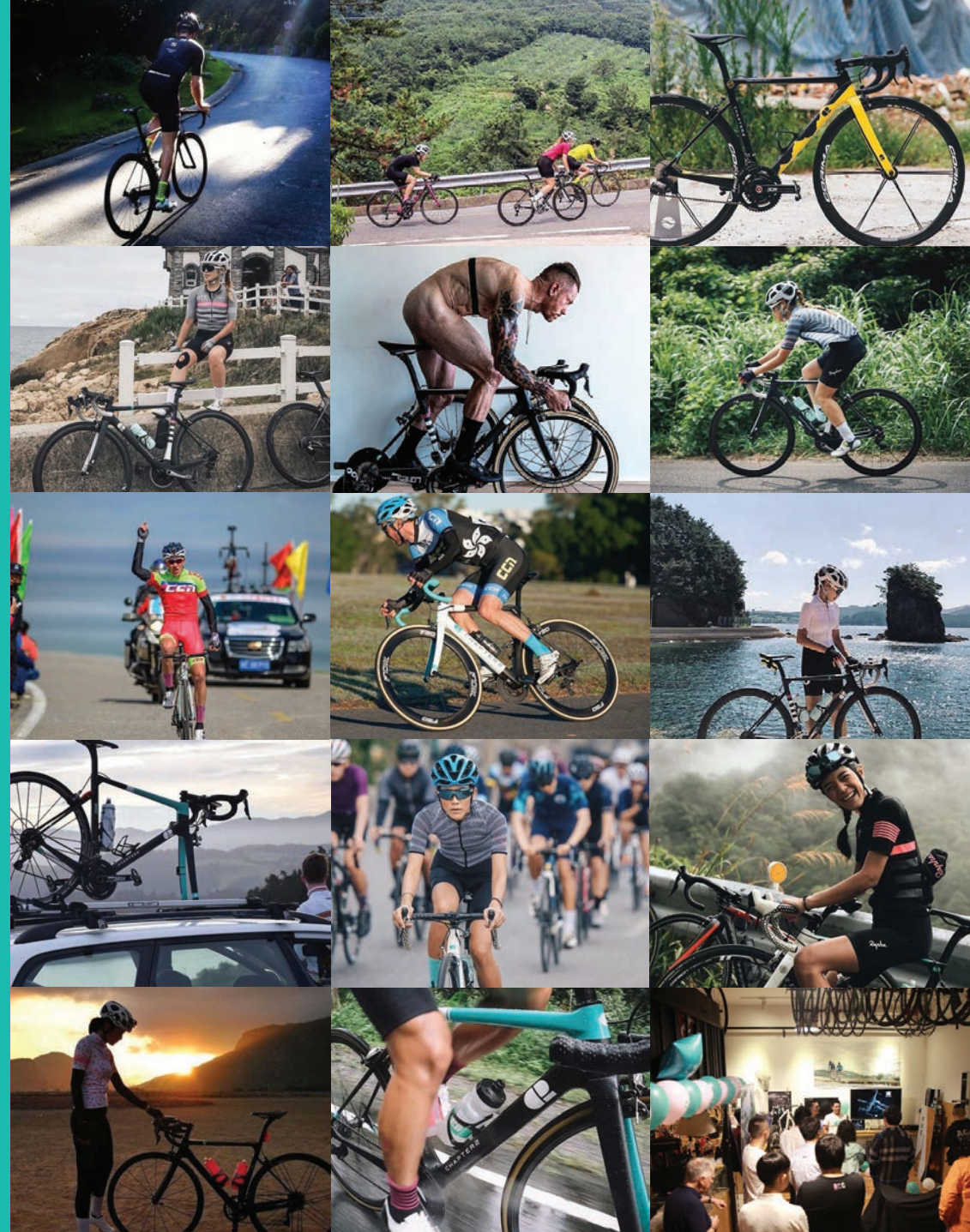




TERE Disc, Ornot X C2 Capsule, Limited Edition Collaboration

	MSRP (excl. VAT)	MSRP (incl. VAT)
 TERE RIM	€ 2,033	€ 2,460
 TERE DISC	€ 2,147	€ 2,598
 RERE RIM	€ 2,077	€ 2,513
 RERE DISC	€ 2,172	€ 2,628
 HURU RIM	€ 2,879	€ 3,484
 HURU DISC	€ 3,012	€ 3,645
MANA	€ 422	€ 511





CHAPTER2 Bikes name and C2 logo are a trademark of Performance Sports Ltd. CHAPTER2 Bikes are constantly seeking ways to improve the specification, design and production of their frameset, so alterations take place continually. Whilst every effort is made to produce up-to-date literature, this brochure should not be regarded as an infallible guide to current specifications. Any CHAPTER2 frameset shown as complete bike is intended as reference only. Third party components are not intended to represent product sold by CHAPTER2 Bikes. Design by [www.onfiredesign.co.nz](http://www.onfiredesign.co.nz)

Thanks to, Momo Chui, Tony Brownjohn, Johnny McCormack and Cameron Mackenzie for photos.  
Instagram photos tagged with #chapter2bikes





[info@chapter2.co.nz](mailto:info@chapter2.co.nz)

[chapter2bikes.com](http://chapter2bikes.com)