

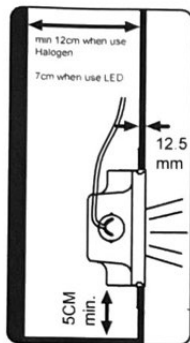
INSTALLATION MANUAL

Q13646 - Gypsum GU10 Step Light

DMQ



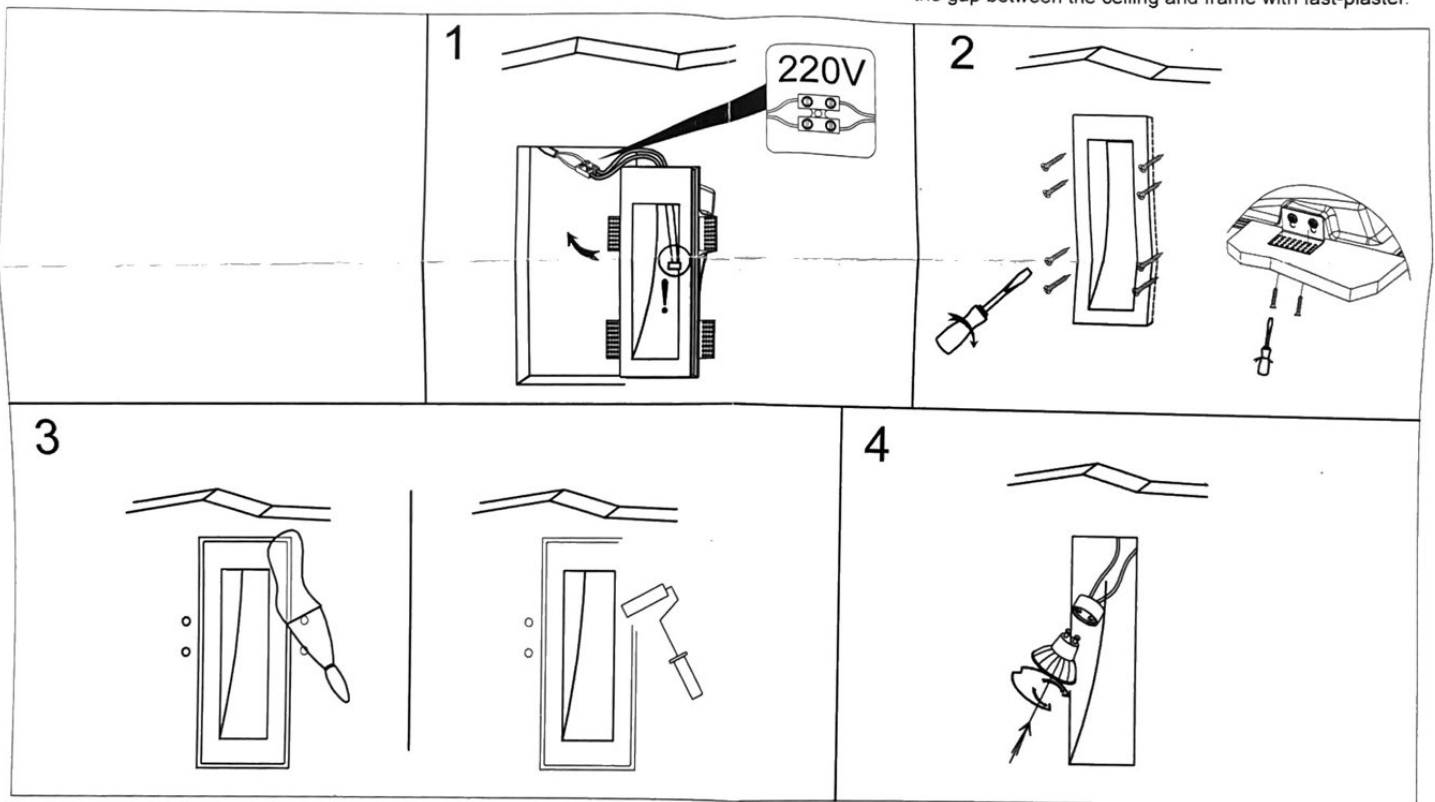
100-240V | GU10 | IP20 | ALUMINIUM | MAX. 35W



* When plastering the ceiling after installation the light needs to stick out the ceiling 2-4 mm. This depends on the plaster thickness. Please discuss with your plasterer.

For example, when plaster will be 3mm thick, the trimless frame should stick out 3mm. After plaster it will be 0mm (frame / ceiling will be flat surface.)

* If the ceiling is already plastered, stick out 0mm and fill the gap between the ceiling and frame with fast-plaster.



Warnings:

1. Disconnect the electricity before installation
2. Make sure that the product is installed properly before connecting to electricity
3. Do not cover the fitting
4. Maintenance and installation should only be carried out by a professional electrician



Visit DMQ.nl
by scanning
this QR code

Q13646