

STEEL Clash



To ensure the highest quality, the table is 100% European made. We only work with manufacturers that share our vision of creating excellent tables by using only the best resources. We pay regular visits to our suppliers to ensure the highest quality standards are maintained and that is clearly visible in the end result.

The Clash Steel Pro made its premier debut at the Deutsche Billiard-Meisterschaften at the end of 2019 in Bad Wildungen, Germany. This photo was taken at the tournament and we received great feedback from both the players and the crowd. The Clash Steel Pro is thanks to its quality and professionalism the ideal tournament table!




Johan Ruysink
-Professional Pool coach, 8 times winner Mosconi Cup-


This table surprised me for its quality, its consistence in playing and the use of superior materials. The players I work with and have played on this table have all found it to be one of the best tables around at the moment. The rails, pockets and design are exactly what it should be. This table is perfect to improve your game and become a champion!


Mark Blik
-Billiard Fitter-

'The table is easy to install and the feedback from the customers is very positive. Furthermore, the table is very well finished with a durable, steel frame and has a very solid structure which guarantees the stability of the table. Definitely a game changer!'

Contact Us

 Adres:
Dam 21 4331GE Middelburg,
The Netherlands

 Email:
info@loontjens.com

 Telephone:
+31 (0)118 611 455

 Website:
www.clashpool.com



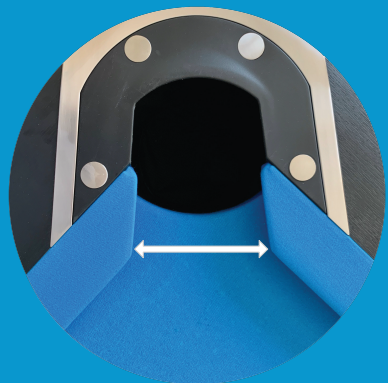
STEEL Clash



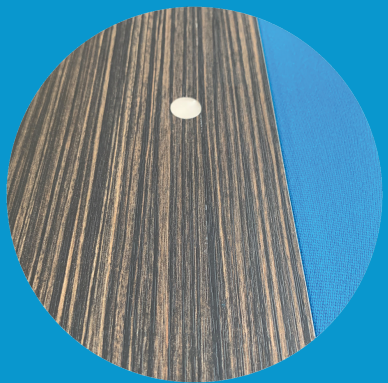
STEEL Clash

Introducing our new flagship model: Clash Steel Pro 9-foot. The table is designed with attention to detail and has been formed to perfection due to new innovations and developments.

Customize your table From 8 tables



We offer special pocket sizes upon request.



More than 100 different options of laminate available. Pictured: Ebony finishing



Personalize your table. It is possible to customize the corners of the pockets with your name or business.

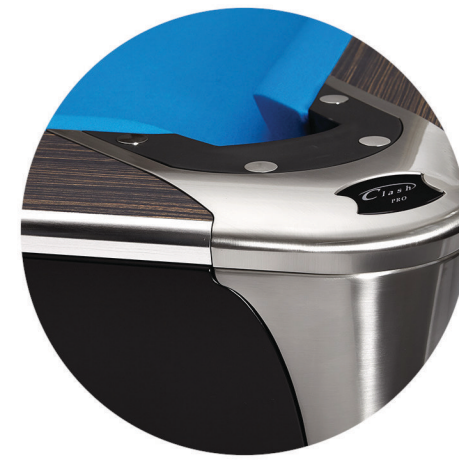


Gabriels Pro Pockets are used in the new Clash Steel Pro. These pockets meet the highest match standards and use advanced top-down mounting to ensure the highest quality and playing comfort and avoids damage to the balls. The pockets fit a complete set of balls!



The Clash Steel Pro has a solid, durable steel frame, which secures the stability and ensures the maximum precision of the table.

We use a 3-piece 30 mm thick slate to provide the smoothest possible movement of balls and maximum precision of your shot.



The pocket sizes meet the requirements of the World Pool Association (11,7 cm for the corner pockets and 13 cm for the middle pockets).

The tables are equipped with a facing of 3,175 mm, which is the standard for tournament tables.



Constant Re-Bound
Due to a refined mixing process of the raw materials.

100% Tested
Each individual length of rubber is tested.



The construction of the rails consists of different pieces of oak wood which have been carefully put together to create the perfect stability of the rail.



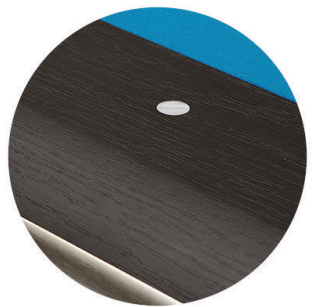
Our cloth strip is made of synthetic material and due to its sturdy embossing it ensures the perfect fit to hold the cloth in place.



Possibility to choose any color of Simonis 760 or Simonis 860 cloth at your wish.



The slanted finishing of the pocket makes sure that when a ball is potted it actually ends up in the pocket instead of bouncing out.



Standard equipped with HPL (High Pressure Laminate) black finish