



techlinetrauma.com™

TECHLINE®  
TECHNOLOGIES, INC.

***TRAIN MORE, BLEED LESS®***

PRODUCT GUIDE

COMPACT KITS, VOL.1 2017

© 2016-2017 Techline Technologies, Inc. All rights reserved.  
Equal Opportunity Employer

# WHO WE ARE

**Techline® Technologies, Inc. is dedicated to serving the men and women of our Military, Law Enforcement, and First Responder communities. We do this through a commitment to building the highest quality products, designed to meet the training needs of the end-users.**

Techline® did not enter the trauma simulation field until 2006. Techline's® research into the existing trauma simulations for use on large numbers of students began at Camp Johnson, NC. The technology in use was limited to make-up and vinyl strap on wounds. The initial set-up required hours of preparation and each scenario required the touch-up of damaged make-up. The instructors wanted a faster method of producing realistic wounds. They were concerned that the snaps and buckles on the existing plastic wounds fatigued and failed. Further research at Ft. Bragg and Ft. Campbell emphasized the need for the wounds to function beyond their shocking appearance.

The Techline® development team attacked these problems in a multi-disciplinary approach. Our team included a Navy Corpsman, a Pathologist, a Polymer Chemist, Engineers, and several Artists. Every wound was designed for clinical accuracy, appearance, functionality, and durability. The result

## HANDCRAFTED QUALITY IN THE USA

Each high quality Techline Trauma wound is individually crafted by hand with patented color infusing technology.



Wounds are not shown actual size. Wound color, weight or size may vary slightly per lot. Prices and availability are subject to change without notice. Warranty terms and conditions; Please visit [www.techlinetrauma.com](http://www.techlinetrauma.com)



© 2017 Techline Technologies, Inc. All rights reserved.

# CONTENTS

## >> WEARABLE WOUNDS™

Thigh Laceration .....	4
GSW Through Hand(R).....	4
Impaled Object.....	4
Severe Burn—Forearm(R) .....	5
Evisceration.....	5
Broken Jaw with Laceration.....	5
Open Wound—Scalp.....	5
Compound Fracture—Arm .....	5
Avulsion to Calf.....	6
GSW to Leg.....	6
Deluxe Wearable Wound™ Kit .....	6
Blood powder .....	6
Blood supply pump .....	6

## >> B-CON TRAINER

Bleeding Control Torso .....	7
------------------------------	---

## >> WOUNDS-IN-A-BOX®

### PACKABLE WOUNDS

GSW-in-a-Box.....	8-9
Laceration-in-a-Box .....	9
Shrapnel Wound-in-a-Box .....	9

### NPA/NARCAN AIRWAY TRAINER

Nose-in-a-Box .....	9
---------------------	---

### TIBIAL IO TRAINER

IO-in-a-Box .....	9
-------------------	---

## >> SELF ADHESIVE WOUNDS™

Individual Wounds .....	10-11
Complete Kit .....	11



# Training time is valuable, why **WASTE** it on **SET UP** and **RESETS**?

***FAST SET-UP ALLOWS FOR MORE SCENARIOS, MORE HANDS-ON EXERCISES AND LEADS TO INCREASED TRAINEE CONFIDENCE.***

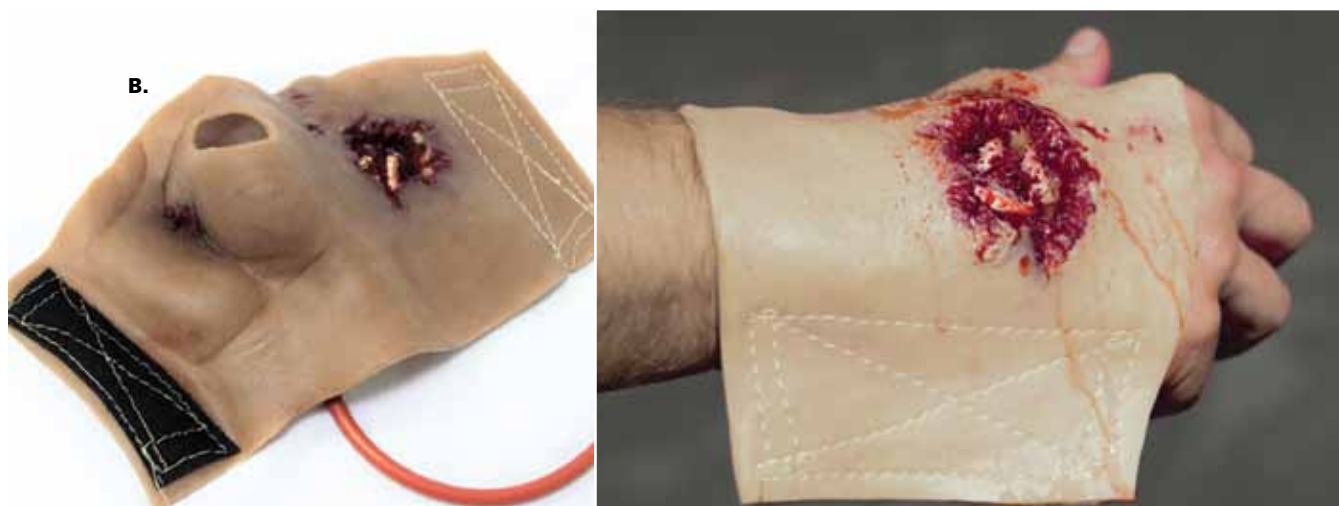
**TECHLINE® TRAUMA WEARABLE WOUND SIMULATIONS™** allow instructors to swap out casualties and realistic, bleeding wounds faster than it takes to remove the used bandages. The extremely rugged wounds slip on or wrap around the patient, holding them in place during drags and evacuation. Bleeding can be supplied by hand pumps or a **SKEDCO Field Expedient Bleeding Simulation System (FEBSS) Hydrasim®** (Not included) for realistic training.

- >> Accepts Tourniquets and Packing for Hemorrhage Control
- >> Adapts to Actors or TOMManikin®
- >> No Make-up Necessary
- >> Choice of Light or Dark Skin Tone
- >> Clinically Accurate
- >> Realistic Textures
- >> Realistic Blood Flow
- >> Extremely Rugged

## ***TRAIN MORE, BLEED LESS®***



# WEARABLE WOUNDS™

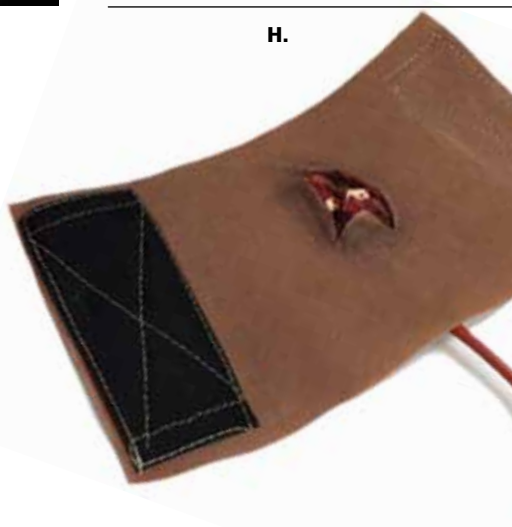


» **WEARABLE WOUNDS™**  
**AVAILABLE IN LIGHT**  
**AND DARK SKIN TONE**

A. WW3-001: Thigh Laceration

B. WW3-002: Gunshot Wound  
 through hand (Right)

C. WW3-003: Impaled Object



- D. WW3-004: Severe Burn Forearm (Right)**
- E. WW3-005: Evisceration**
- F. WW3-006: Broken Jaw with Laceration**
- G. WW3-007: Open Head Wound**
- H. WW3-008: Compound Fracture Arm**

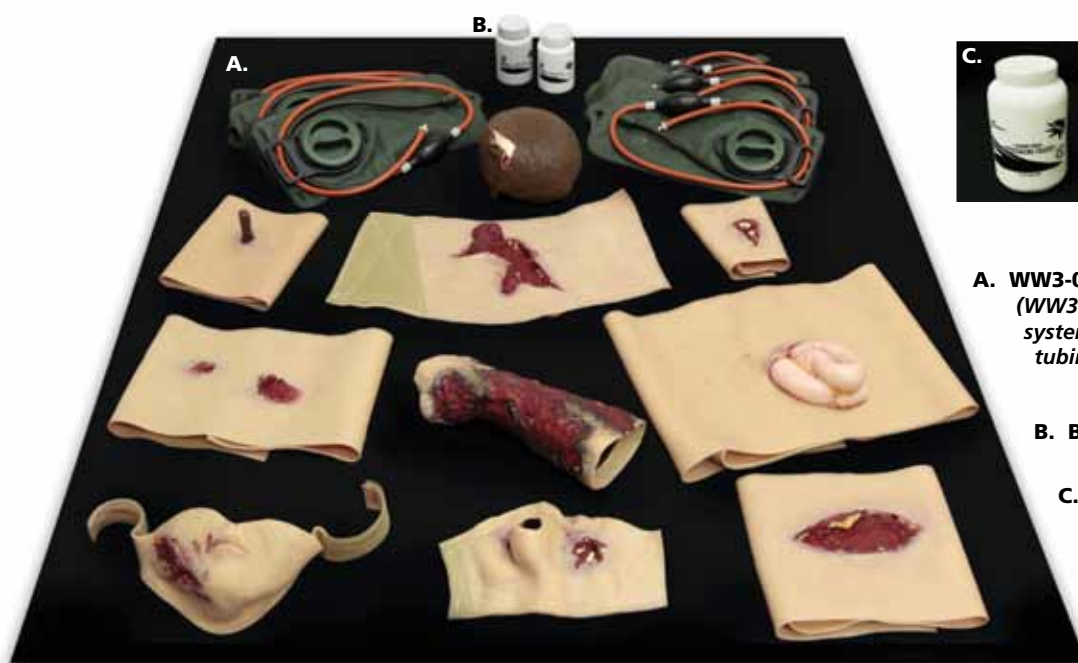


# WEARABLE WOUNDS™



I. WW3-009: Avulsion to Calf

J. WW3-010: Gunshot Wound to leg



A. WW3-010: Deluxe Wound Kit™ (WW3-001 thru WW3-010, bleed system, blood, replacement tubing, connectors & hard case)

B. BLD-04S: Small Blood Powder—4.4 oz

C. BLD-48L: Large Blood Powder—48 oz

D. WW3-BRP: Blood Supply Pump

## TRAIN MORE



## BLEED LESS®

*The multi functional Hemorrhage Control **B-CON TRAINER** is a cost effective solution for skills training.*

### ABILITY TO CONTROL THE BLEEDING FROM:

- » A gunshot wound in the inguinal crease through proper packing and/or use of junctional tourniquets
- » A fully amputated leg through proper application of a tourniquet

### PTT-B80: B-CON TRAINER

- » Accepts Tourniquets and Packing for Hemorrhage Control
- » Clinically Accurate
- » Realistic Textures
- » Realistic Blood Flow
- » Extremely Rugged

The stand-alone Hemorrhage Control **B-CON TRAINER** provides instructors with a simple, multi-functional method of teaching the basic Bleeding Control Skills. The device can be run dry in a classroom to demonstrate proper interventions, or it can be attached to a bleeding system and force students to apply those interventions under stress. Bleeding can be supplied from a variety of sources including Techline® manual bleeding pumps, I.V. bags, or the **SKEDCO Hydrasim®** (Not included).



# ***BIG Performance ...little package***

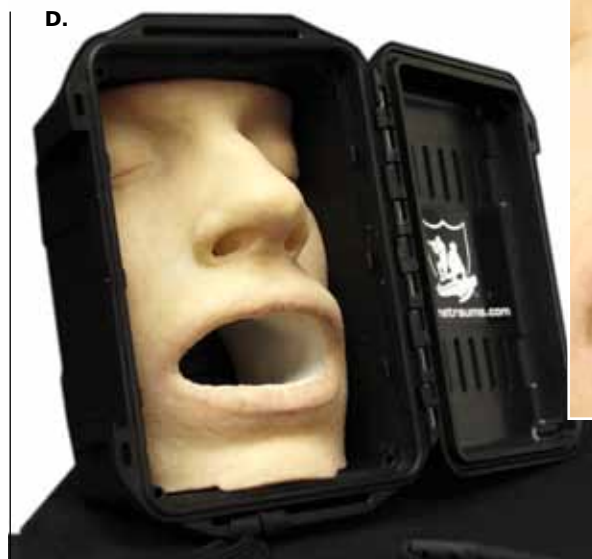
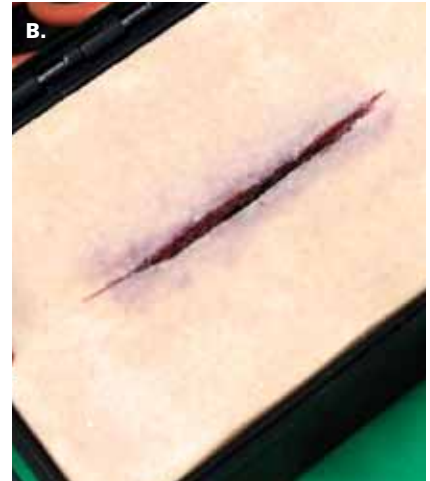
***EASY TO TRANSPORT, YET RUGGED  
ENOUGH FOR CLASSROOM OR FIELD USE.***

The ***Wounds-in-a-Box®*** series offers cost effective, compact solutions for skills training. Easily integrated into existing training, driving the students to practice life saving interventions on wounds that look and feel real. Bleeding can be supplied by hand pumps or a ***SKEDCO Field Expedient Bleeding Simulation System (FEBSS) Hydrasim®*** (Not included) for realistic training.





## WOUNDS-IN-A-BOX®



Nasopharyngeal airway (Not included) and intranasal naloxone administration trainer.



### » PACKABLE WOUND

- A. PTT-B01: GunShot Wound-in-a-Box
- B. PTT-B02: Laceration Wound-in-a-Box
- C. PTT-B03: Shrapnel Wound-in-a-Box

### » NPA/NARCAN AIRWAY TRAINER

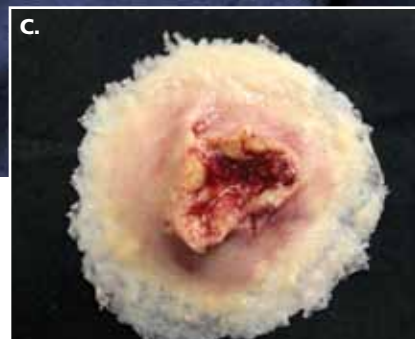
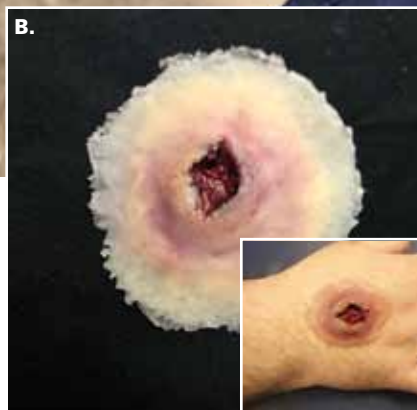
- D. PTT-B70: Nose-in-a-Box

### » TIBIAL IO TRAINER

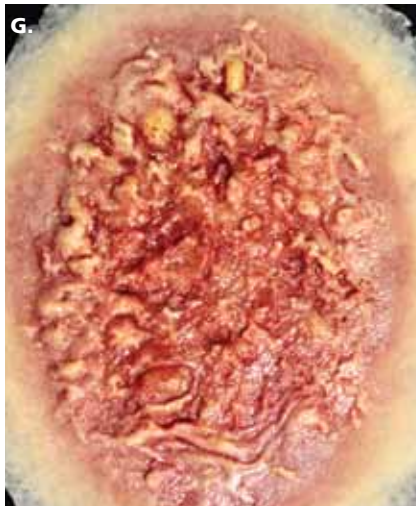
- E. PTT-B51: IO-in-a-Box

# *Enhance your existing training systems with **SELF ADHESIVE MOULAGE™***

*Techline® Self-Adhesive wounds do not require additional make-up or glue to adhere to actors or manikins. The realistic wounds are ready for application right from the package. Between scenarios the wounds can be transferred from actor to actor without any touch-up.*







## » SELF ADHESIVE BACKING

*Wounds are not shown actual size.  
Wound color and sizes may vary slightly per lot.*

- A. SW001: Gunshot Entry Wound—Small
- B. SW002: Gunshot Entry Wound—Large
- C. SW003: Gunshot Exit Wound—Medium
- D. SW004: Gunshot Exit Wound—Large
- E. SW005: Laceration—Medium
- F. SW006: Laceration—Large

- G. SW007: Burn 2nd Degree
- H. SW008: Electrical Burn—Medium
- I. SW009: Chemical Burn—Medium
- J. SW010: Thermal Burn—Medium
- K. SW011: Electrical Burn—Large
- L. SW012: Thermal Burn—Large
- SW000: Complete Small Wound Kit;  
Products 1–12(SW001–12)

# **TRAIN MORE, BLEED LESS®**

>> FIND WHAT WORKS BEST FOR YOU,  
ASK ABOUT THE FULL LINE OF

WEARABLE WOUND SIMULATIONS™  
TOMMANIKIN® and TAMIKIN®  
SELF ADHESIVE WOUNDS™  
WOUNDS-IN-A-BOX®  
B-CON TRAINER



**855.426.0312**  
[WWW.TECHLINETRAUMA.COM](http://WWW.TECHLINETRAUMA.COM)

TECHLINE TECHNOLOGIES, INC.  
668 DAVISVILLE RD.  
WILLOW GROVE, PA 19090  
TOLL FREE: 855.426.0312  
PHONE: 215.657.1909  
FAX: 215.657.4430