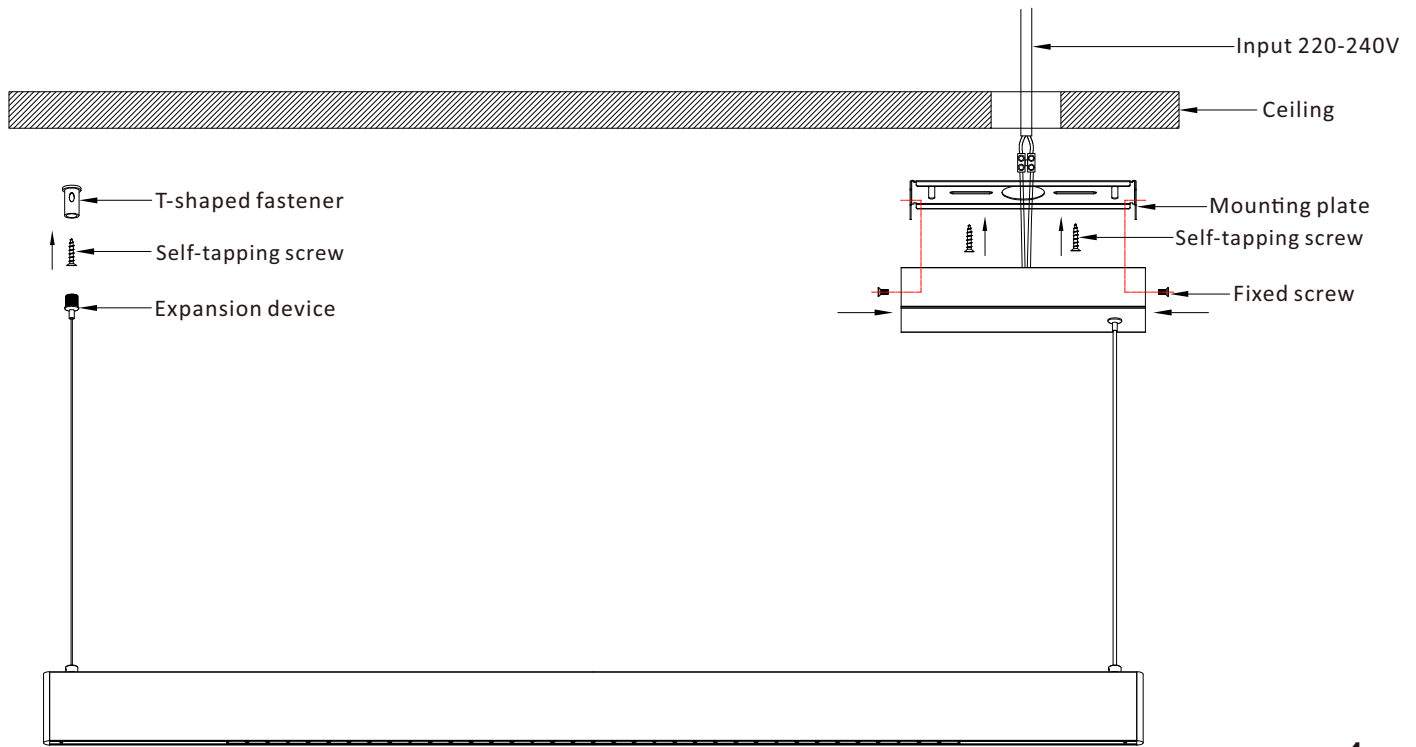
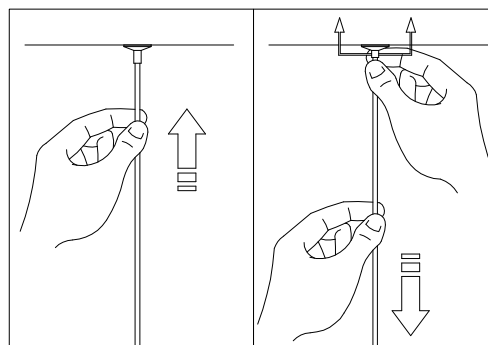
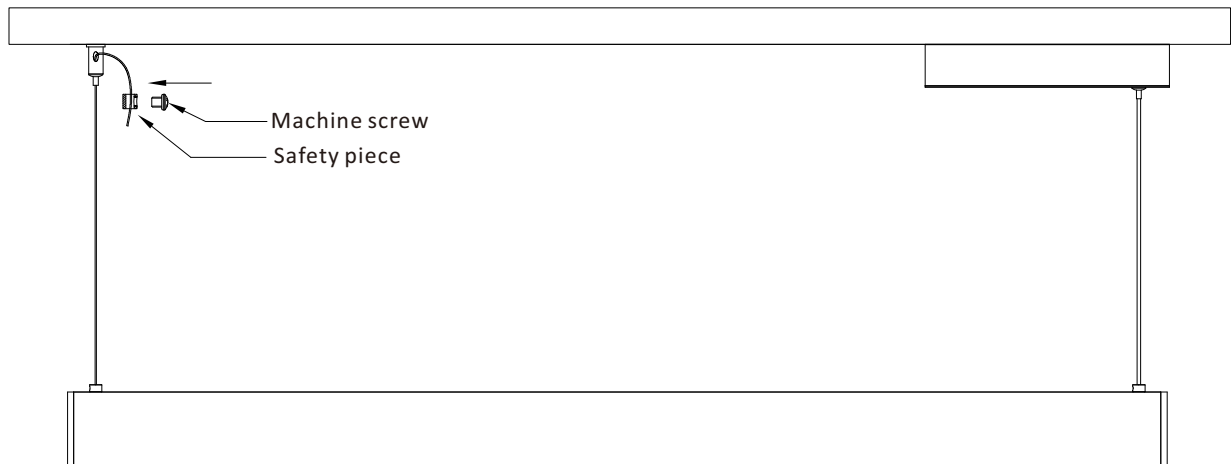


1. To install the light, disconnect the power supply before performing the following operations: Secure the mounting plate and T-shaped fastener with self-tapping screws, and then connect the power supply



1

Fix the hanging plate and the ceiling box with the fixing screw, push the wire rope into the expansion device and pass through the hole on the side of the T-shaped fastener, lock the safety piece, adjust the wire and wire rope to the appropriate height and then power on.



2