

Manual



**hotspot** titanium

(dd-mm-yyyy)

Purchase date:

 -  - 

Installation date:

 -  - 

Serial no:

First filter change:

 -  - 

Second filter change:

 -  - 

Third filter change:

 -  - 

Fourth filter change:

 -  - 

Fifth filter change:

 -  - 

**HotSpot Titanium UK**

90 Rockingham Street

Sheffield, S1 4EB

+44 (0)20 3192 1428

# Table of contents

<b>1</b>	<b>Introduction</b>	<b>4</b>
1.1	Application	5
1.2	Warranty	5
1.3	Liability	6
<b>2</b>	<b>Operation of the HotSpot Titanium</b>	<b>7</b>
2.1	Hot-mix functionality 8 litre base unit	7
2.2	IntelliProtect products (electronic taps and heaters)	7
2.3	Spring-back-safety products (mechanical taps and heaters)	9
<b>3</b>	<b>Maintenance</b>	<b>10</b>
3.1	Cleaning	10
3.2	Filter replacements	10
<b>4</b>	<b>Technical specifications</b>	<b>11</b>
<b>5</b>	<b>Troubleshooting</b>	<b>13</b>
5.1	Error messages (IntelliProtect systems)	13
5.2	Error messages (Spring-back-safety systems)	13
5.3	Malfunction table	14
<b>6</b>	<b>Installation</b>	<b>15</b>
6.1	IntelliProtect system parts	17
6.2	Spring-back-safety system parts	19
6.3	Installation steps	21

# 1 Introduction

Congratulations on your purchase of the HotSpot Titanium system you have bought a safe and reliable quality product. The HotSpot Titanium boiling water tap operates in combination with your HotSpot Titanium 4 or 8 litre base unit. The system provides you with boiling water as well as hot and cold tap water like every kitchen mixer tap. The taps of HotSpot Titanium will always ensure safety for you and the people using the tap.

This manual is intended as a reference for the end-user and the installation technician. Using this manual, the HotSpot Titanium 3-in-1 tap can be installed safely. Store this manual carefully, you may need to use it in the future. HotSpot Titanium has prepared this manual with care. However, no rights may be derived from it. In connection with continuous product innovation, HotSpot Titanium reserves the right to change the specifications at all times and without prior notice. The second part of this manual is intended for the fitter only. Carefully read the part of the guide that is intended for you.

## 1.1 Application

### The heater

The water heater is suitable for storage and heating of drinking water under pressure. The water heater, fitted with overpressure protection, should be connected to a water mains with a water pressure that does not exceed 600 kPa (6 bar), otherwise, a pressure reducing valve must be used. Any other use is not in accordance with the intended purpose.

### The tap

The tap should be connected to a HotSpot Titanium base unit and may only be used in combination with a HotSpot Titanium base unit. Any other usage is not in accordance with the designated use.

## 1.2 Warranty

The HotSpot Titanium system has been manufactured with the greatest care. HotSpot Titanium guarantees the repair of all material and/or structural defects free of charge within the warranty period.

### Warranty period

- 2-year\* warranty on the water heater, tap and including accessories, without registration;

- 5-year\* warranty on the products after registering the product on the website;
  - 20-years\* leakage warranty for the registered owner on corrosion of the titanium tank.
- \* starting from the date on the invoice

### Warranty registration

Register your product online on our website within 3 months after purchase to make use of the extended warranty offer. The purchase invoice indicating the date of purchase and products must be submitted.

### Warranty claim

- In the event of a warranty claim, please provide the model and the serial number of the water heater located on the label on the rear of the base unit.
- You can request service via our website.
- The invoice together with the date of purchase must be submitted for a service request.

### Warranty conditions

- Boiling water filter requires replacement prior to reaching its capacity or annually, whichever comes first. Filter capacity can be found within the filter manual.

- There are material and structural defects (to be assessed by the manufacturer);
- The system is installed, used and maintained in accordance with the supplied installation and operating guide;
- The system has not undergone any structural changes or adjustments;
- The defect is not the result of boiling dry, too hard or too aggressive drinking water, aggressive liquids or substances, damp or gasses and interior or exterior corrosion or scaling;
- The defect is not the result of the owner's own fault, neglect or improper use.

### **Warranty exclusion**

- General wear and tear of the product
- Transport damage
- Secondary damage, such as fire damage, loss of profits, water damage or physical injury
- Failure to protect your HotSpot Titanium system against limescale

### **1.3 Liability**

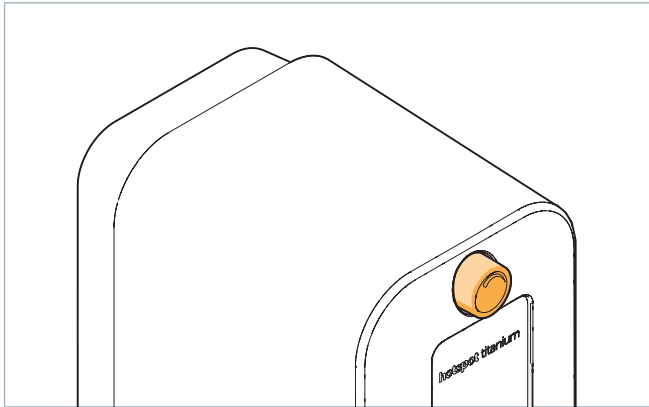
HotSpot Titanium accepts no liability for damage or bodily injury of any kind resulting from:

- Failure to follow the instructions in this manual;
- Carelessness during installation, use, maintenance and repair of the system;
- Use not in accordance with the application;
- The use of components not supplied by the manufacturer;
- Consequential damage due to leakage.

## 2 Operation of the HotSpot Titanium

### 2.1 Hot-mix functionality 8 litre base unit

The 8 litre base unit can be the source of your hot water. The 8 litre base unit is mixing the incoming ambient water with the stored boiling water. The temperature of the hot water can be controlled between 35-70°C. The temperature can be set by turning the knob at the top of the base unit, as shown below. Turn the knob clockwise to reduce the temperature and counter clockwise to increase the temperature. You can find the connection scheme in the installation instructions of this manual.



**⚠ HotSpot Titanium offers two type of systems, please look at the paragraph applicable for your product. All our base units have an on/off button which requires to be pressed for 2 seconds to turn the base unit on or off.**

### 2.2 IntelliProtect products (electronic taps and heaters)


#### 2.2.1 The IntelliProtect tap

Hotspot Titanium has 3 IntelliProtect safety levels on the IntelliProtect tap. The default setting is IntelliProtect level 2, without volume-filling functionality.

#### To use your tap for the first time:

Press (0.5 sec), release (0.5 sec) and press and hold. The water will flow. Release when you have enough filtered boiling water.

### Using the tap with different IntelliProtect levels:

	○	Level 1	<b>Press and hold</b>
	○○	Level 2	<b>Press</b> (0.5 sec), <b>release</b> (0.5 sec) and <b>press and hold</b>
	○○○	Level 3	<b>Press</b> (0.5 sec), <b>release</b> (0.5 sec), <b>press</b> (0.5 sec), <b>release</b> (0.5 sec) and <b>press and hold</b>

### Volume-filling (when switched on):

With this functionality you can easily get larger amounts of boiling water. Use the level instruction as described above and hold for 10 seconds until the red light beside the press pad ceases to flash and stays red, press again to stop.

### Temperature indication light:

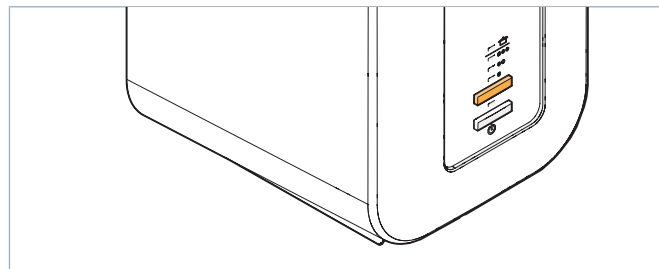
When the boiling water button is being used the light will flash every second to indicate that the boiling water is at its required temperature. If the light is flashing quicker this means that the water within the heater is heating up and not at boiling temperature yet.


### 2.2.2 The IntelliProtect base unit

How to adjust the IntelliProtect® settings on your heater:  
The IntelliProtect® safety level can be set on the heater to prevent accidental activation of the tap.  
The default IntelliProtect® safety setting is level 2.

### Changing the settings

On your heater you will find the IntelliProtect® control button. Use the button to change and scroll through the three IntelliProtect levels and volume-filling function. The level of which the LED's are on is selected.



○	Level 1	Press the tap button once
○○	Level 2	Press the tap button twice
○○○	Level 3	Press the tap button three times
	Volume-filling	convenient when you regularly require larger amounts of boiling water

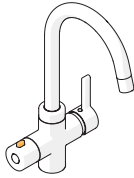


The volume-filling functionality can be put on and off by scrolling through the complete menu once. E.g. if you are using the default setting of level 2 you need to press three times to come to level 2 again, this three times pressing will either put on or put off the volume-filling mode.

## 2.3 Spring-back-safety products (mechanical taps and heaters)

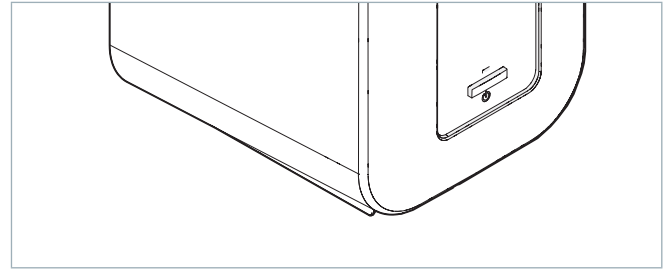
### 2.3.1 The Spring-back-safety tap

The HotSpot Titanium Spring-back-safety taps use a mechanical safety feature. By pressing the button on the left part of the tap and turning the knob backwards you can activate the flow of boiling water. By turning the knob further backwards you can control the amount of boiling water flowing out of the tap. When you release the knob it will automatically turn off the boiling water.



### 2.3.2 The Spring-back-safety base unit

On our Spring-back-safety base units there is an on/off button. On this type of base unit there is no option to change the safety levels or use a volume-filling mode. This contrary to with our IntelliProtect products.



# 3 Maintenance

When installing the HotSpot Titanium water heater, be sure to check the quality of your water. The usage of a boiling water filter is mandatory. For more information about the water filters we refer you to our website or the water filter manuals.

## 3.1 Cleaning

- Both the water heater housing and the tap body can easily be cleaned with a soft cloth. Do not use aggressive or abrasive detergents.
- We recommend to clean the aerator of the tap periodically, this is located in the end of the spout of the tap. Replacement parts of the aerator are available at HotSpot Titanium.

## 3.2 Filter replacements

The cartridge of your boiling water filter should be changed periodically. This is either:

- When the water filter cartridge has reached its capacity. For more information about the capacity we refer you to our filter manuals.
- When the water filter cartridge is installed for one year, this is required due to hygienic reasons and bacteria build-up.

The boiling water filter requires to be changed in accordance with the above to keep the warranty conditions available to your system.

## 4 Technical specifications

General information	
Ambient temperature	4 – 38 °C
Operating humidity range	25 – 85% relative humidity (RH)
Maximum operating altitude	2000 m
Protection rating	IPX4

Electrical information	
Connection	13amp group earthed wall socket
Power supply	220-240 V ~ 50 Hz
Max. capacity	2100 Watt



Technical specifications		
	4 litre base unit	8 litre base unit
Dimensions	210 mm x 325 mm x 285 mm	210 mm x 525 mm x 285 mm
Weight when empty	4.5 kg	5.7 kg
Weight when full	8.5 kg	13.7 kg
Drinking water connection	Cold water	-
Standby-power use (in OFF status)	16 Watt	25 Watt
The boiler cannot be connected to the hot water supply (hot-fill connection is not possible)		

<b>Use information</b>		
	<b>4 litre base unit</b>	<b>8 litre base unit</b>
<b>Capacity of the boiler</b>	4 litre	8 litre
<b>Quantity of hot water @ 50 degrees</b>	-	15 litre
<b>Maximum water supply pressure</b>	5.5 bar	5.5 bar
<b>Flow rate of the boiling water at 3.0 bar pressure</b>	2 l/min	2 l/min
<b>Safe pressure</b>	8 bar	8 bar
<b>Heating time from 10°C to 100°C</b>	15 min	21 min
<b>Temperature of mixed water (°C)</b>	-	35-70°C

# 5 Troubleshooting

The HotSpot Titanium boiling water system is a quality product developed on the basis of many years of experience, and it is made of first-class materials. In the unlikely event of a malfunction, you can rectify it by using the table below. If the action described does not have the required effect, pull the plug out of the wall socket and inform HotSpot Titanium about this. First, note the product name, model number and the serial number of your HotSpot Titanium base unit. You can find this information on the back of the base unit.

## 5.1 Error messages (IntelliProtect systems)

LEDs flashing					Error message
	o	oo	ooo		
x	x				Dry-boiling protection is activated
x		x			Tap button is malfunctioning
x			x		Electronic wire of the IntelliProtect tap is not connected to the base unit
x	x	x			Tap button is malfunctioning
x	x		x		Lower temperature sensor is defective
x		x	x		Upper temperature sensor is defective

## 5.2 Error messages (Spring-back-safety systems)

For spring-back-safety systems there are no fault codes available.

### 5.3 Malfunction table

Malfunction	Explanation	Solution
Not enough water	Waterpressure is too low	Check another tap. If the pressure is too low, check the mains stopcock and contact the water company
	Shutoff valve is not properly open	Open the shutoff valve
	Calcification of the spout	Clean/replace the aerator
	Kinked hoses	Bend back the hose(s) and possibly retighten the swivel to prevent the hose developing another kink
Water heater is leaking	Leaky hose coupling or leaky inner tank	Contact HotSpot Titanium or the fitter of your product
No boiling water	The IntelliProtect tap hose is not connected	Connect the IntelliProtect hose according to step. in the installation instructions
	Break in the cable of the tap	Contact HotSpot Titanium or the fitter of your product
	Valve defective	Contact HotSpot Titanium or the fitter of your product
	Water heater has not yet reached the correct temperature	Wait approx. 15 minutes after switching on
	Sensor defect	Contact HotSpot Titanium or the fitter of your product
	The combination valve tap is closed	Fully open the combination valve tap (turn anti-clockwise)
Sputtering, irregular flow	Calcification of the spout	Clean/replace the aerator

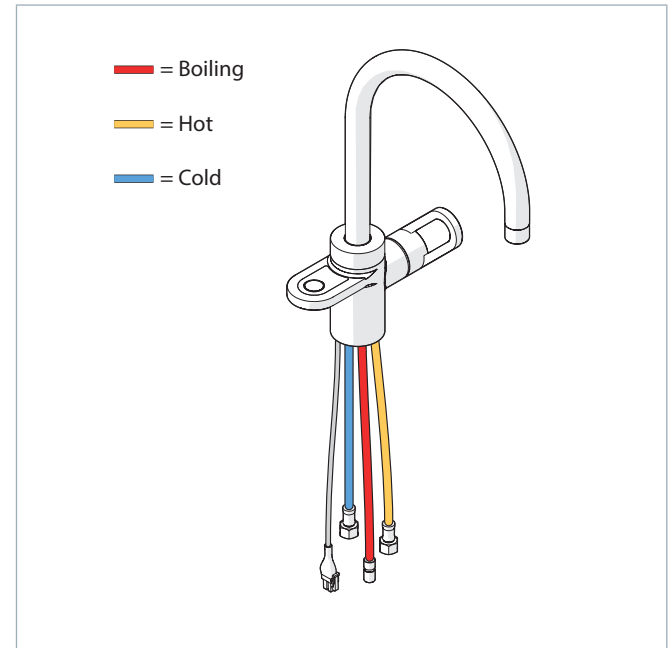
# 6 Installation

## **⚠ Before getting started**

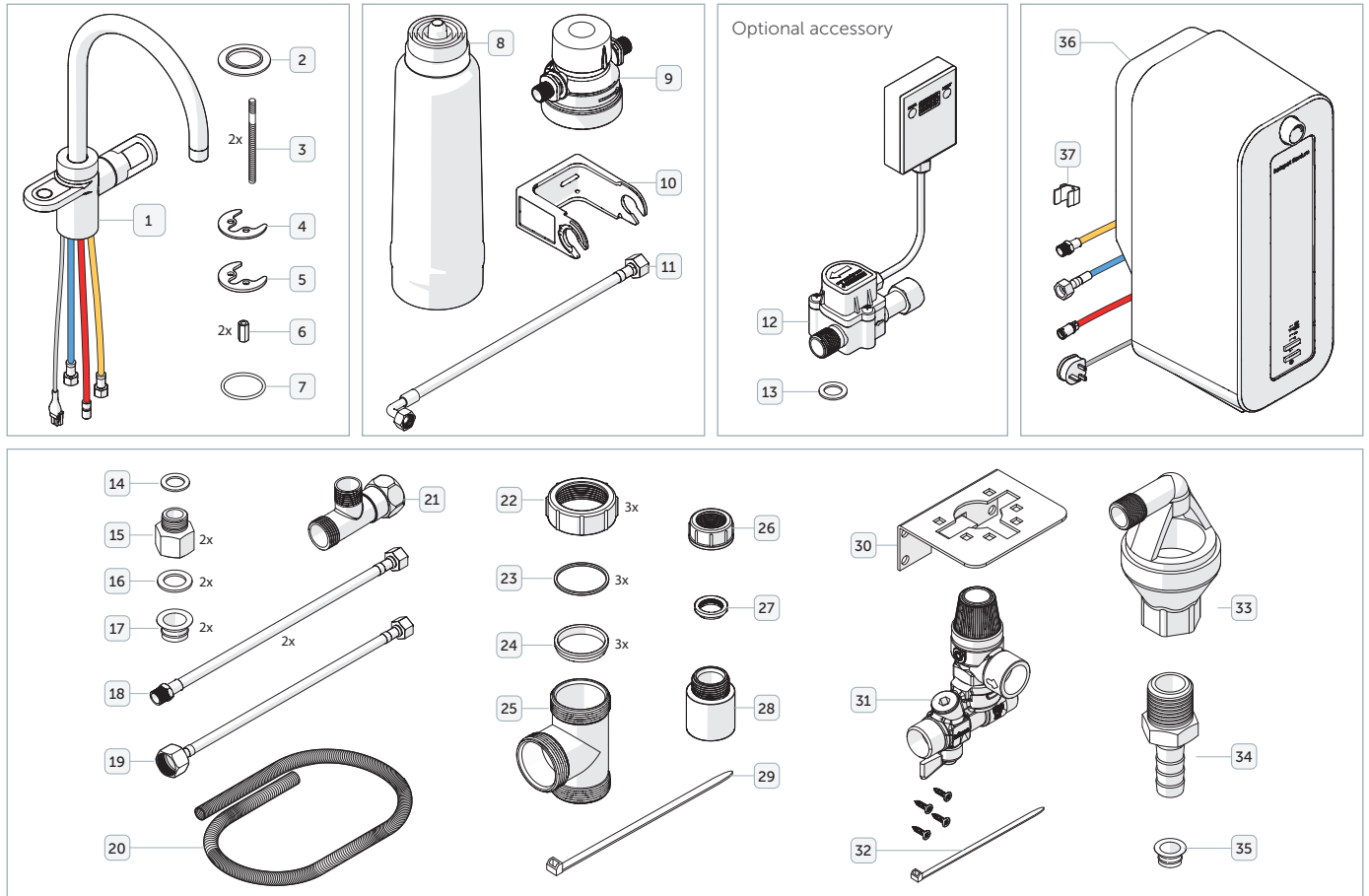
In this part of the manual we will give you the instructions for the installation of the HotSpot Titanium products. Firstly we will show an overview of the products components that you should have in possession. Secondly we will explain how to install the appliance step by step.

During the installation steps where the IntelliProtect products are different compared to the Spring-back-safety products we will show you the differences. If there is no difference we will only show one drawing.

We use colors to indicate the different water hoses and their application. We use blue for cold water, orange for warm water and red for boiling water.



## 6.1 IntelliProtect system parts

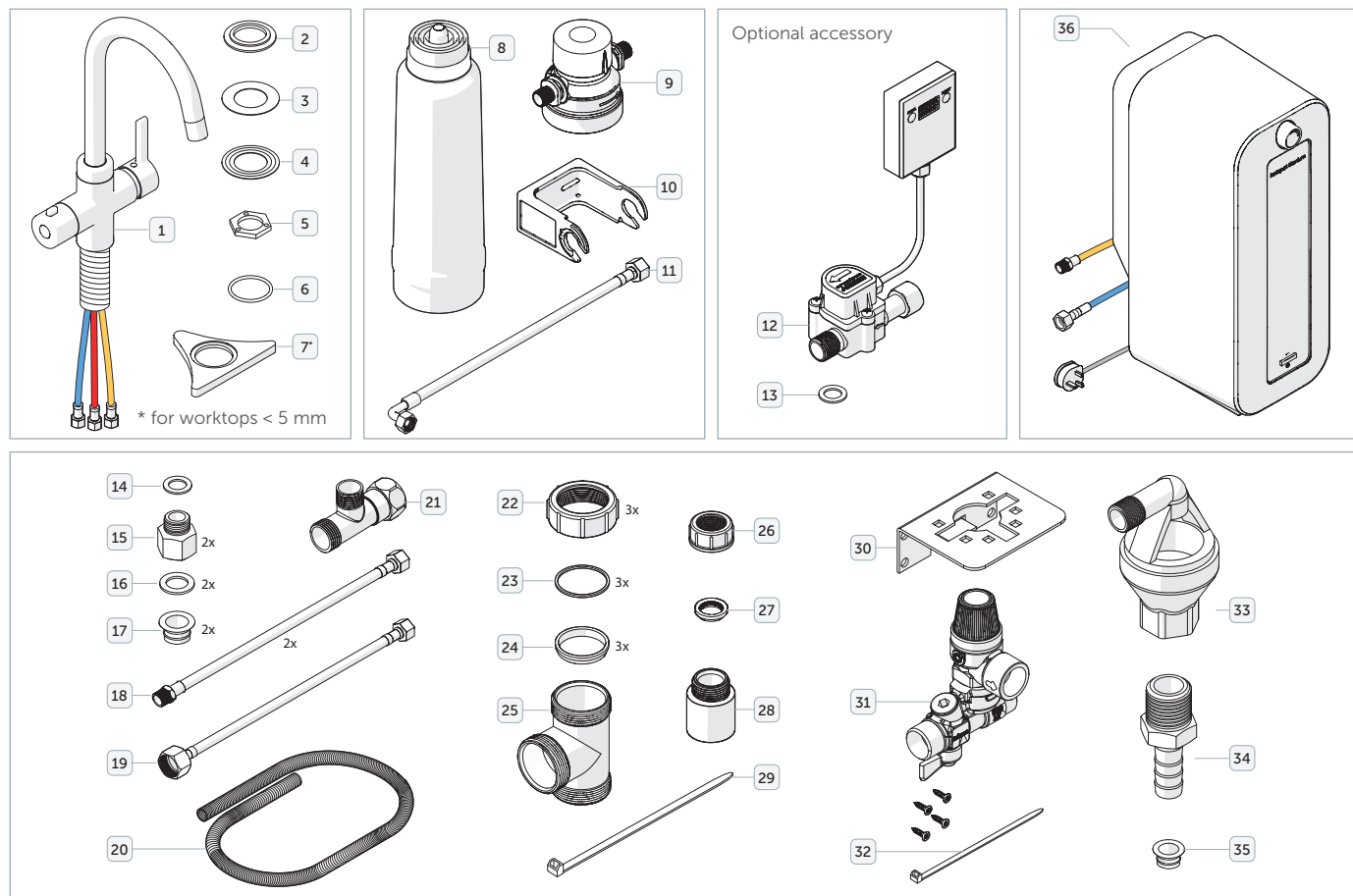




<b>1</b>	IntelliProtect tap
<b>2</b>	Metal tap base ring
<b>3</b>	Threaded bar
<b>4</b>	Rubber Horseshoe Clamp
<b>5</b>	Metal horseshoe clamp
<b>6</b>	Nut
<b>7</b>	Rubber base ring
<b>8</b>	Water filter cartridge
<b>9</b>	Water filter head
<b>10</b>	Water filter bracket
<b>11</b>	Angled flexi hose 3/8" – 3/8"
<b>12</b>	Flow meter
<b>13</b>	Washer
<b>14</b>	3/8" Washer
<b>15</b>	1/2"FI x 3/8"MI adaptor
<b>16</b>	1/2" Washer
<b>17</b>	Flat face insert adaptor 1/2"
<b>18</b>	Flexi Hose 3/8"MI x 3/8"FI
<b>19</b>	Flexi Hose 1/2"FI x 3/8"FI

<b>20</b>	Relief valve discharge hose
<b>21</b>	3/8" tee FxMxM
<b>22</b>	Waste tee compression nut 40 mm
<b>23</b>	Waste tee compression ring 40 mm
<b>24</b>	Waste tee compression rubber 40 mm
<b>25</b>	Waste tee 40 mm
<b>26</b>	Condensate adaptor compression nut
<b>27</b>	Condensate adaptor compression rubber
<b>28</b>	40 mm Waste condensate adaptor
<b>29</b>	Zip-tie
<b>30</b>	Combination valve bracket
<b>31</b>	Combination valve
<b>32</b>	Zip-tie
<b>33</b>	Tundish
<b>34</b>	Tundish hose adaptor
<b>35</b>	Flat face insert adaptor 1/2"
<b>36</b>	IntelliProtect base unit (electrical heater 4 or 8 litre)
<b>37</b>	Connector clip boiling water hose

## 6.2 Spring-back-safety system parts

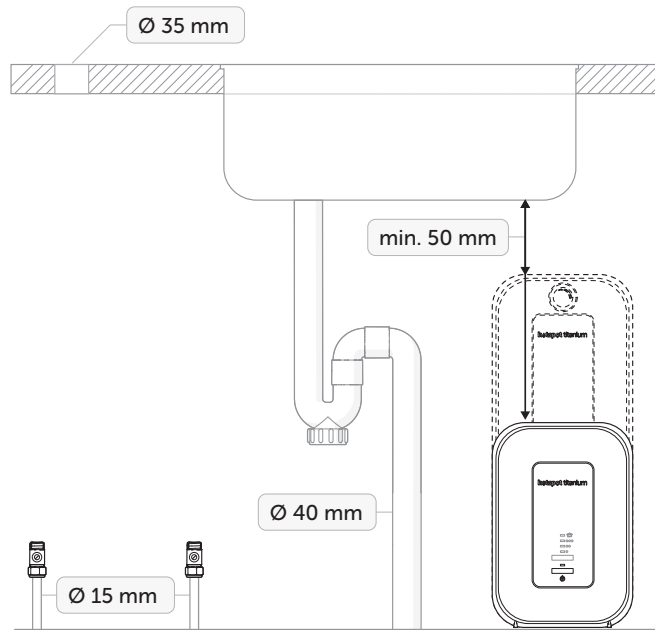


<b>1</b>	Spring-back-safety tap
<b>2</b>	Metal tap base ring
<b>3</b>	Undercounter securing rubber
<b>4</b>	Undercounter ring
<b>5</b>	Locking nut
<b>6</b>	Rubber base ring
<b>7</b>	Stability bracket
<b>8</b>	Water filter cartridge
<b>9</b>	Water filter head
<b>10</b>	Water filter bracket
<b>11</b>	Angled flexi hose 3/8" – 3/8"
<b>12</b>	Flow meter
<b>13</b>	Washer
<b>14</b>	3/8" Washer
<b>15</b>	1/2"FI x 3/8"MI adaptor
<b>16</b>	1/2" Washer
<b>17</b>	Flat face insert adaptor 1/2"
<b>18</b>	Flexi Hose 3/8"MI x 3/8"FI
<b>19</b>	Flexi Hose 1/2"FI x 3/8"FI

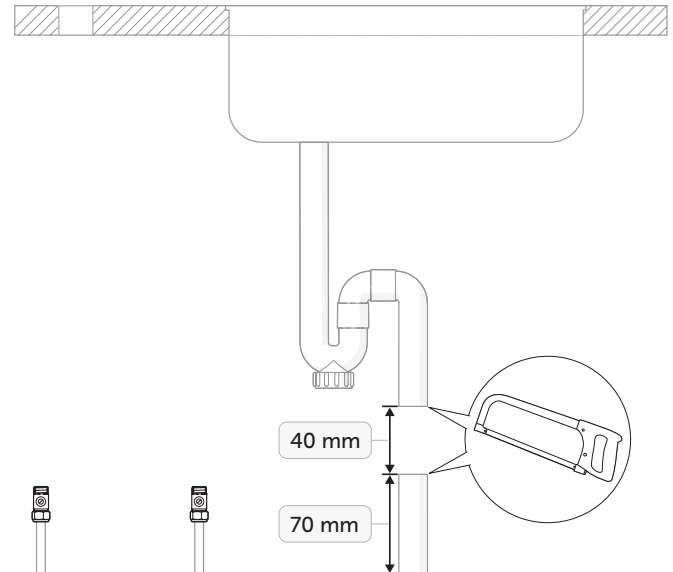
<b>20</b>	Relief valve discharge hose
<b>21</b>	3/8" tee FxMxM
<b>22</b>	Waste tee compression nut 40 mm
<b>23</b>	Waste tee compression ring 40 mm
<b>24</b>	Waste tee compression rubber 40 mm
<b>25</b>	Waste tee 40 mm
<b>26</b>	Condensate adaptor compression nut
<b>27</b>	Condensate adaptor compression rubber
<b>28</b>	40 mm Waste condensate adaptor
<b>29</b>	Zip-tie
<b>30</b>	Combination valve bracket
<b>31</b>	Combination valve
<b>32</b>	Zip-tie
<b>33</b>	Tundish
<b>34</b>	Tundish hose adaptor
<b>35</b>	Flat face insert adaptor 1/2"
<b>36</b>	Spring-back-safety base unit (mechanical heater 4 or 8 litre)

### 6.3 Installation steps

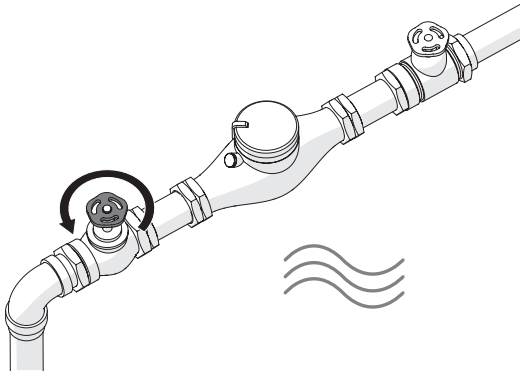
- 1 Check if your cupboard interior meets all the requirements for a successful installation of the HotSpot Titanium boiling water appliance. Please check the following topics: 1) space, 2) electricity, 3) water supply and 4) drainage.



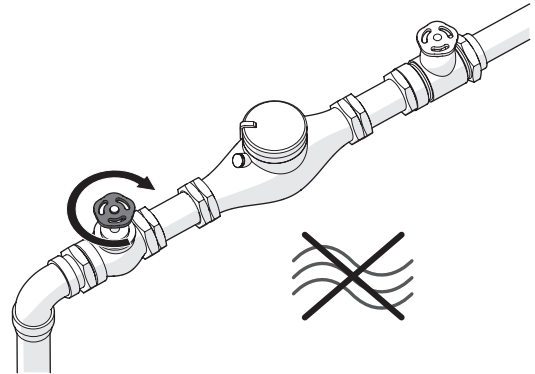
- 2 Cut a 40 mm wide hole in the drain pipe at 70 mm above the cupboard floor.



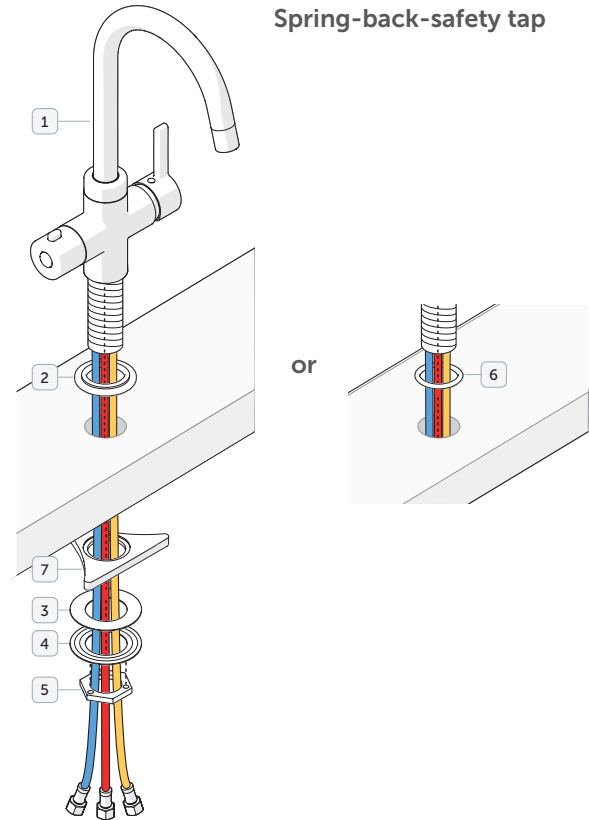
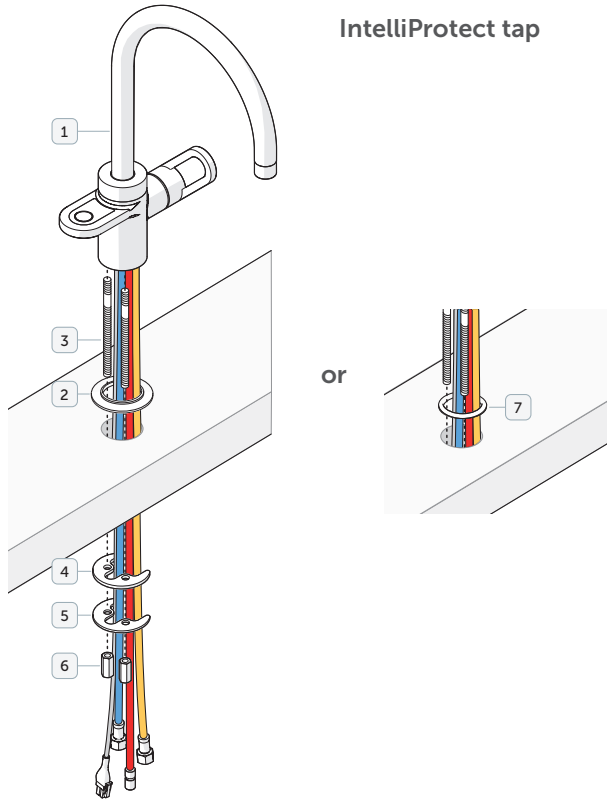
- 3** Flush some water through the water supply pipes to clear out any dirt.



- 4** Close off the main water supply.

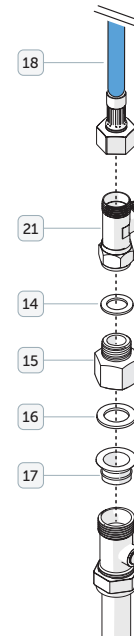
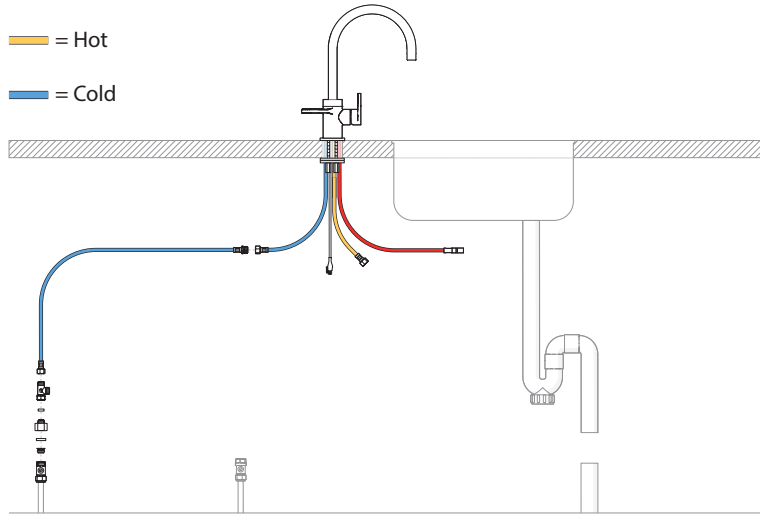


**5** Mount the Hotspot Titanium boiling water tap.



**6** Connect the tap to the cold water supply using the T-piece and optionally use the extension hose.

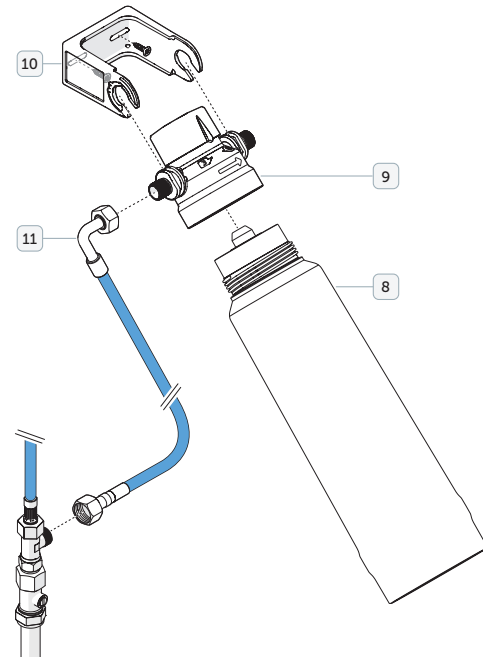
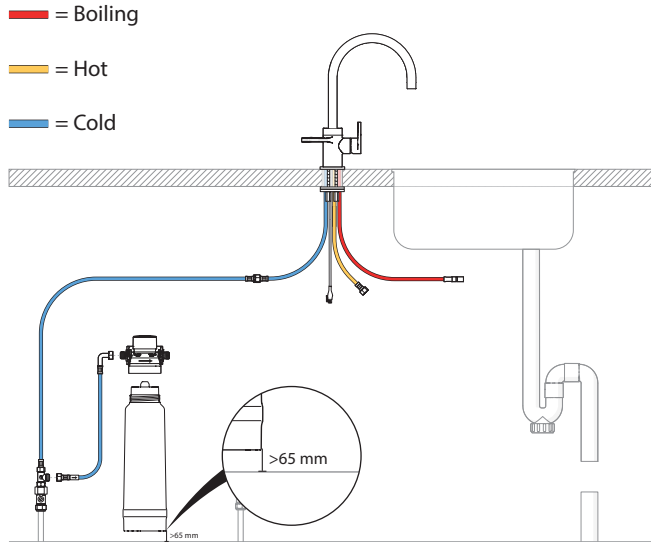
— = Boiling  
— = Hot  
— = Cold



- 7** Connect the water filter to the spare branch on the T-piece on the mains water using the right angled flexible hose.

**Note!** If the water filter is being mounted to the wall please leave at least 50 mm free space between the water filter cartridge and the cabinet floor to ensure easy replacement of the cartridge.

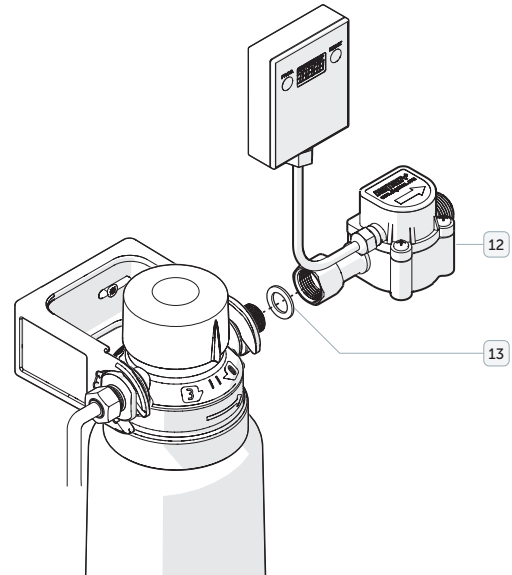
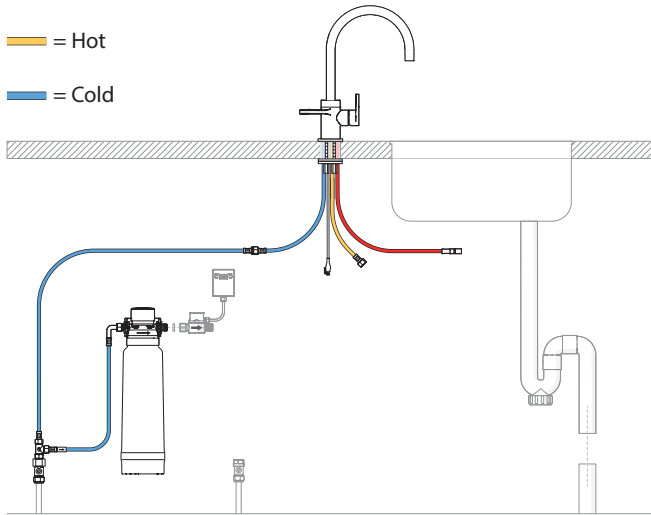
**Note!** For all detailed information about the water filter, please look at the separate water filter manual





**8** Optional: Connect the flowmeter to the filter.

- █ = Boiling
- █ = Hot
- █ = Cold



**9** Connect the overflow tundish to the combination valve. Fit the tundish straight in to the combination valve with the thread.

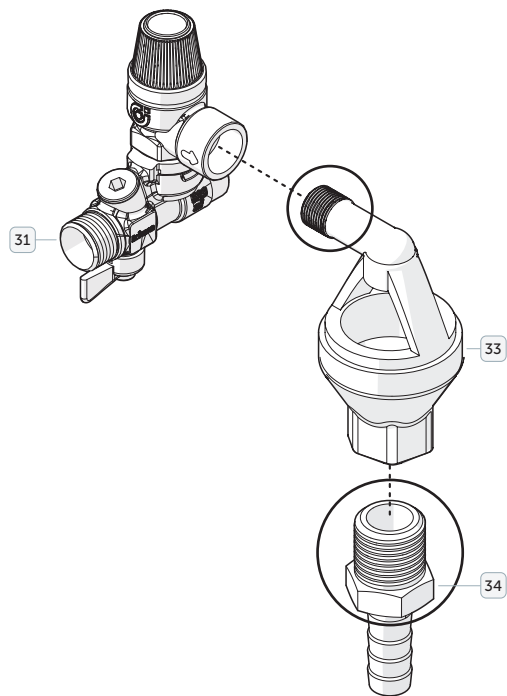
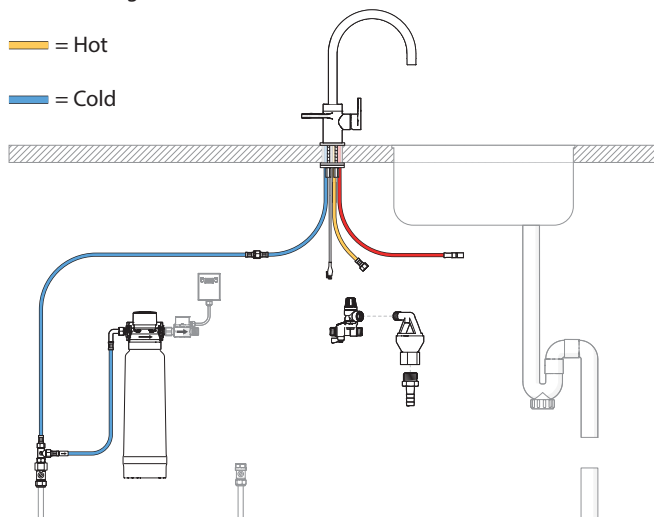
**Note!** Do not loosen once tightened.

**Note!** Apply PTFE tape on the thread ends of both part 33 and 34. Those parts are highlighted with a circle.

— = Boiling

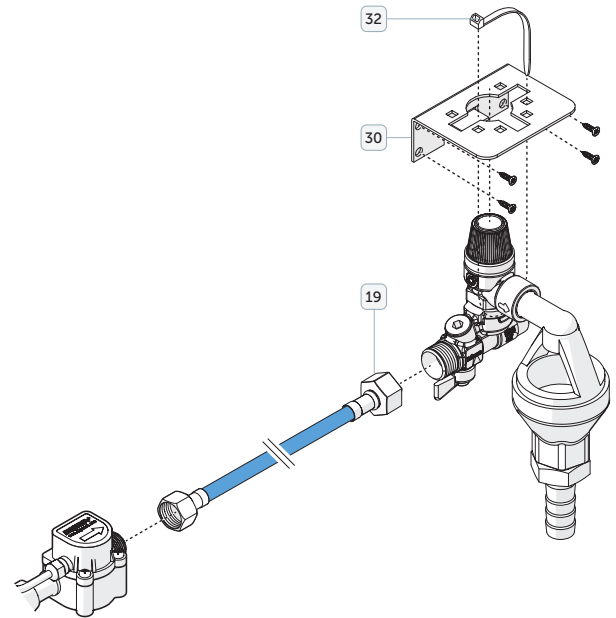
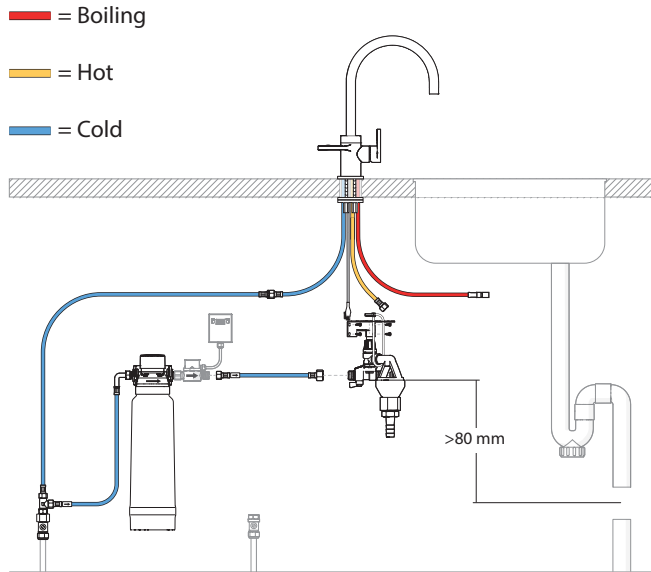
— = Hot

— = Cold



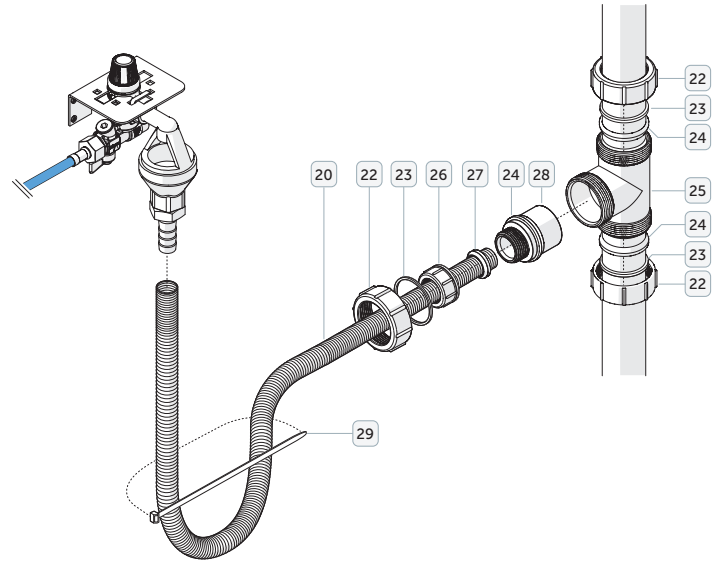
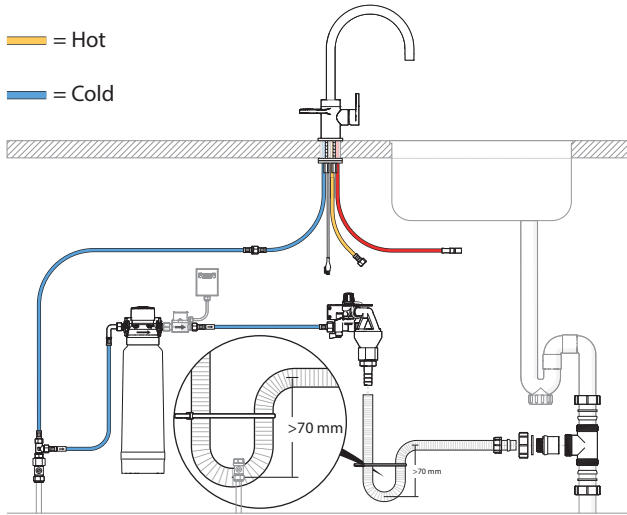
- 10 Connect the combination valve to the filter or flowmeter if installed.
- 11 Mount the combination valve bracket to the cabinet wall and secure the combination valve to the bracket with a Zip-tie.

**Note!** The combination valve should be mounted in the cabinet as high as possible to ensure correct functionality.

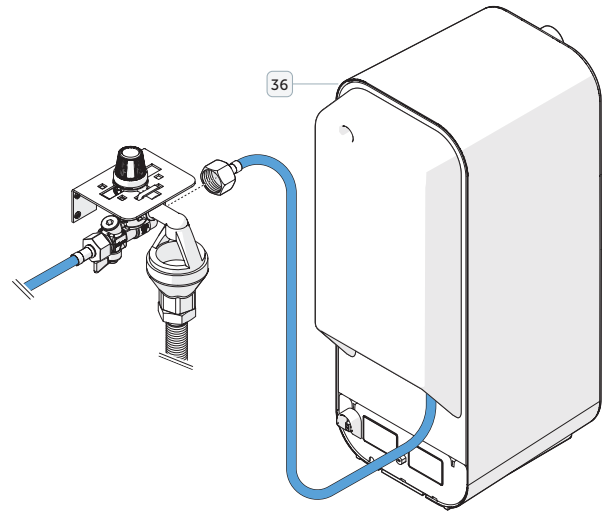
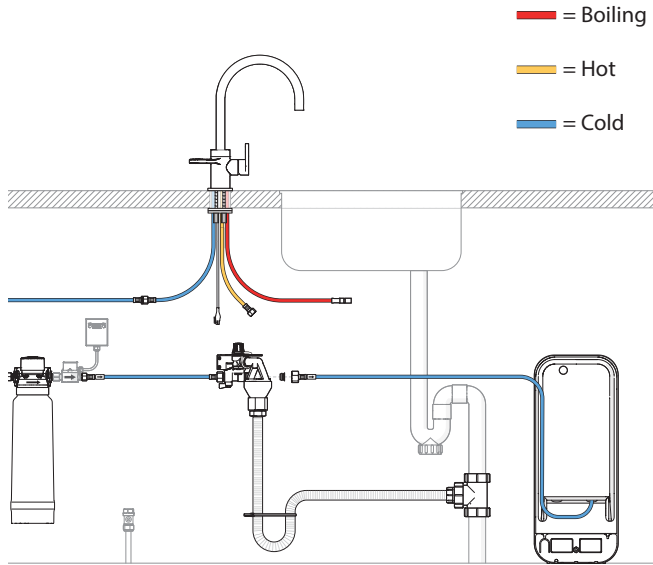


- 12 Connect the overflow hose to the tundish and the existing drainage, ensuring you create a u bend trap in the hose to ensure waste smells are contained.

— = Boiling  
— = Hot  
— = Cold



13 Connect the cold water supply hose of the base unit to the combination valve.



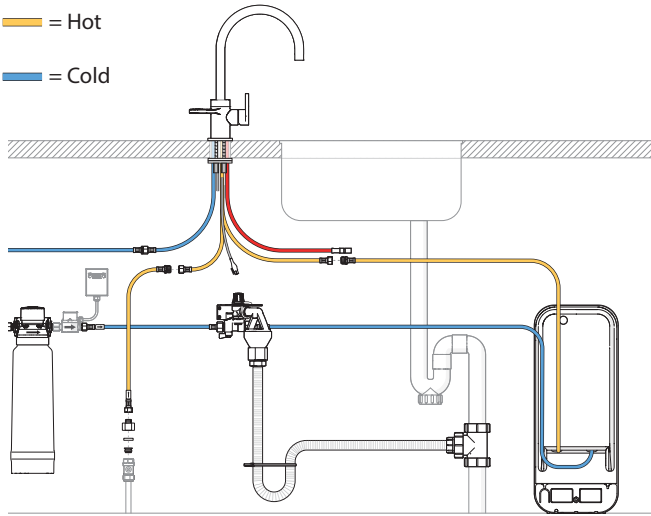
**14** Connect the warm water hose from the tap to the base unit (8L only) or to the existing hot water supply in the cabinet.

Optionally you can use an extension hose supplied.

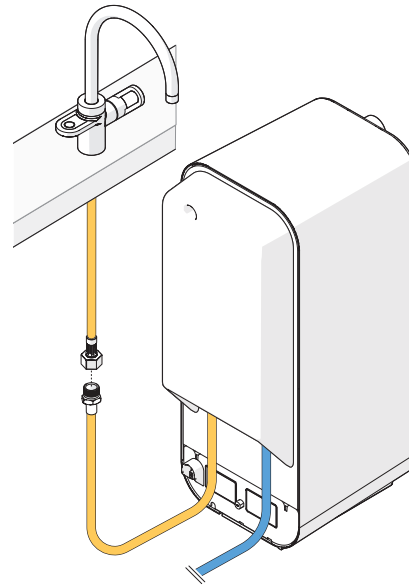
— = Boiling

— = Hot

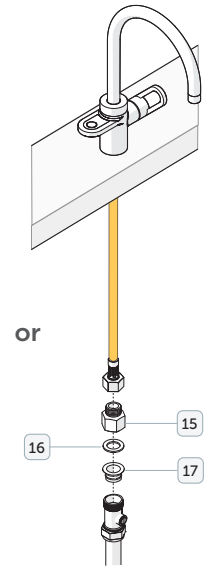
— = Cold



**8L base unit as hot water supply**



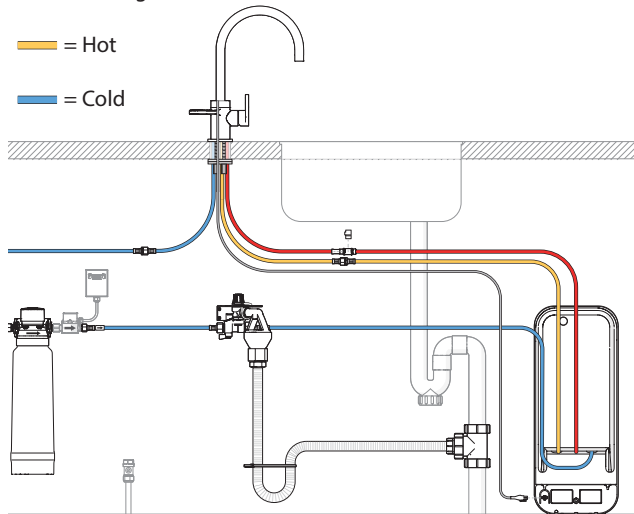
**Existing hot water supply**



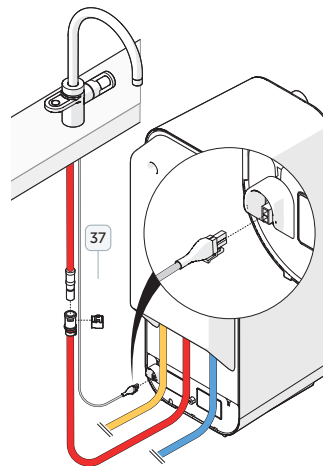
15 Connect the boiling water hose from the tap to the base unit.

16 If you have the IntelliProtect base unit, connect the electronic cable from the tap to the base unit.

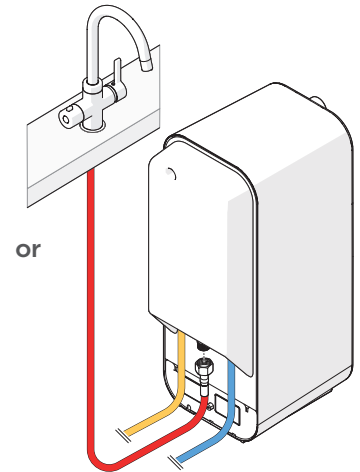
■ = Boiling  
■ = Hot  
■ = Cold



IntelliProtect base unit



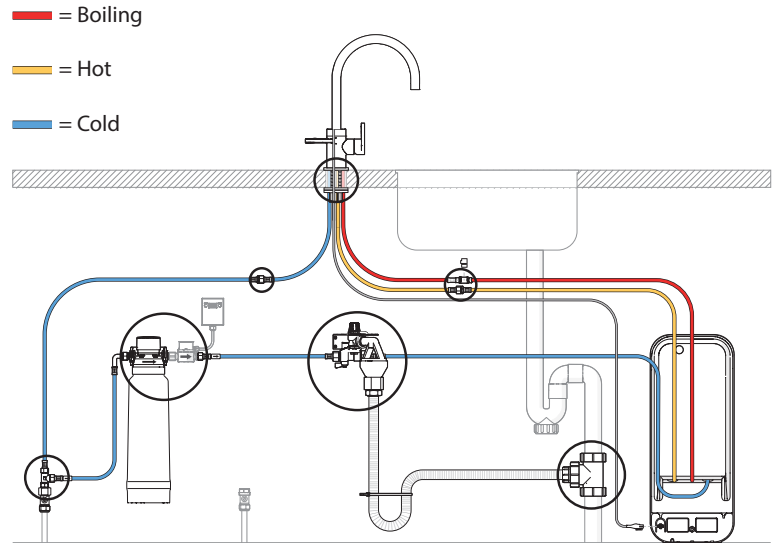
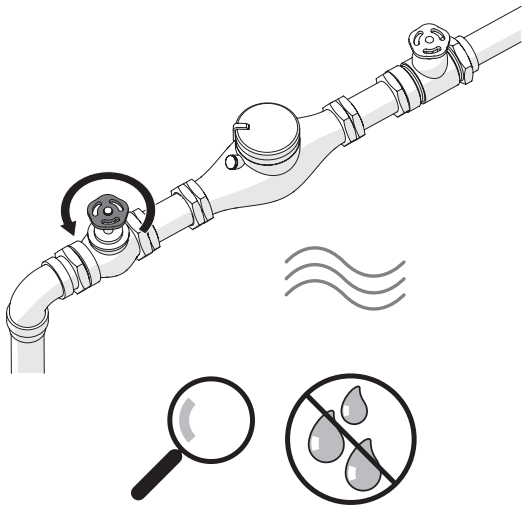
Spring-back-safety  
base unit



- 17 Open the main water supply and isolation valves and check all connections for any leaks while the base unit fills up with water.

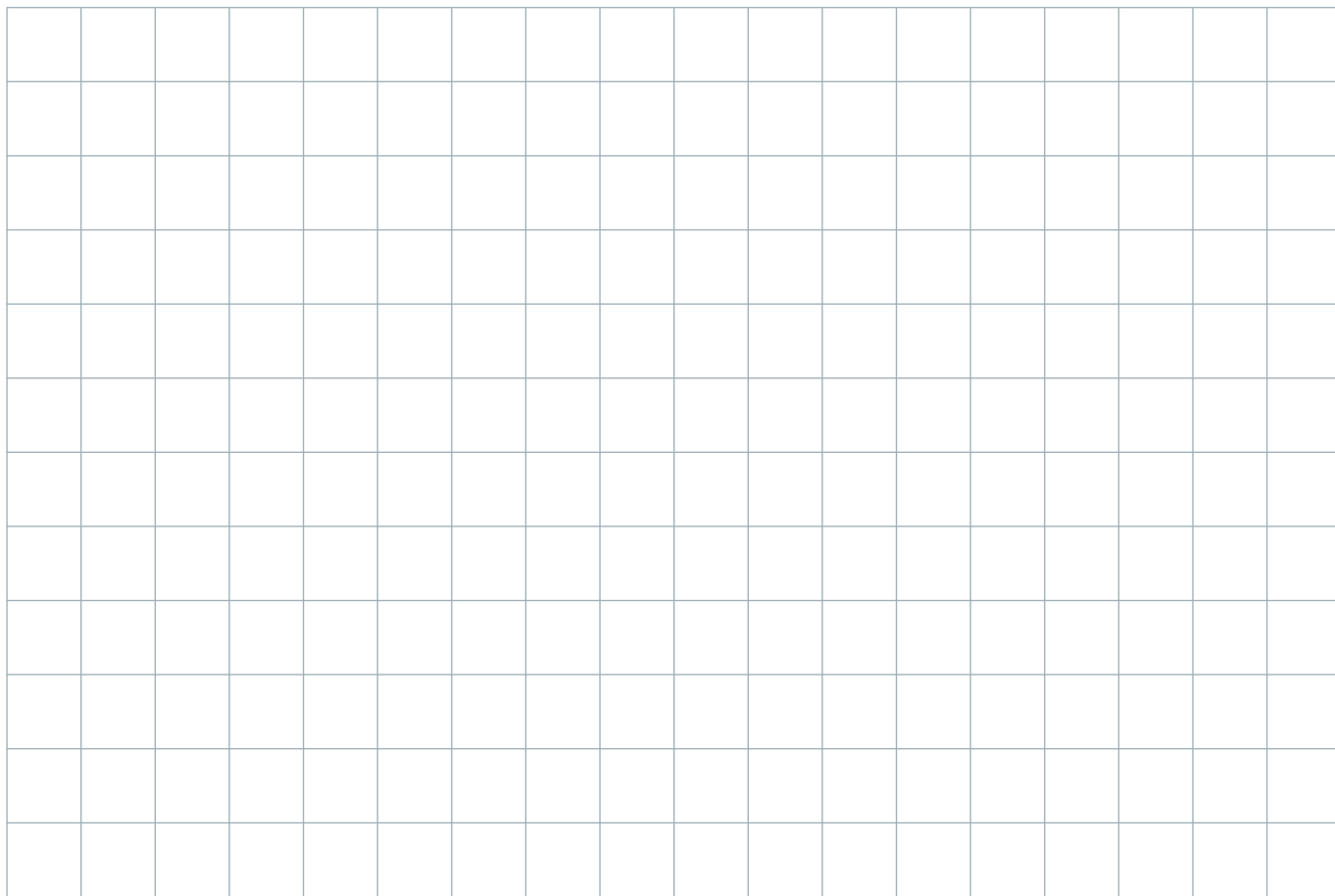
**Note!** In case of a leak, close the main water supply and inspect and fix the leaking connection.

- 18 Once you have ensured all connections are watertight, connect the base unit to the power supply.
- 19 Immediately after powering the unit, dispense boiling water to vent the air from within the base unit. Do this until water runs smoothly. Now the base unit can start heating up.











**hotspot** titanium

[www.hotspot-titanium.co.uk](http://www.hotspot-titanium.co.uk)