

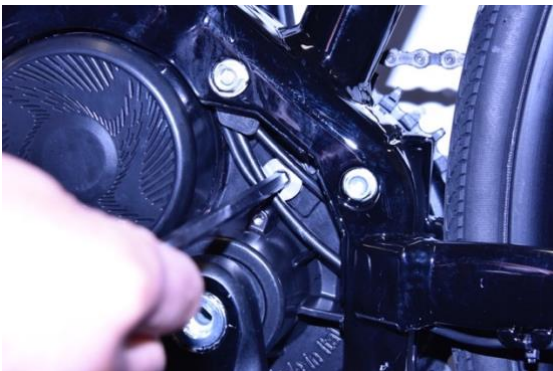


POLINI UPDATER MANUAL

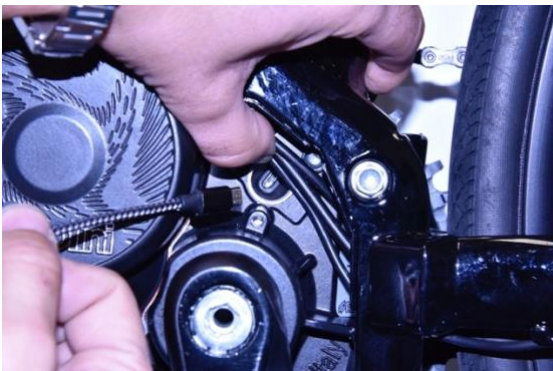
Firmware update for E-P3, E-P3 MX, E-P3+, E-P3+ MX+ motors



Using a Torx 20 key remove the plastic cover



Remove the aluminum cap using an Allen key CH6



Switch the e-bike battery ON

Connect a micro USB cable to the motor (be careful to the direction when you insert it) and the USB socket to a PC with Windows 8 version installed (or higher)

For all the operative systems check that on 1.8 Java or higher: if not installed download and install Java from : www.java.com

Download the updated version of the "Polini Updater" program:

.....
Run the program "Polini Updater" with Java.

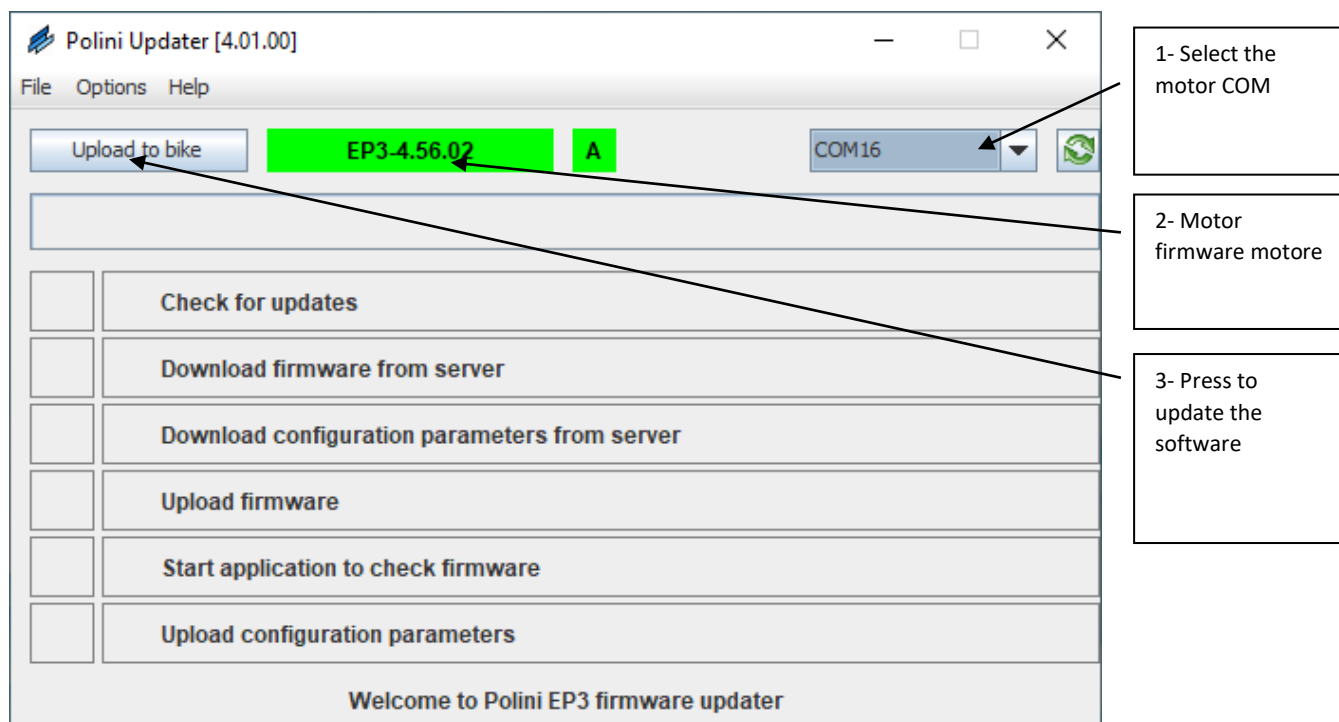
Note: if Java is not installed on the computer, the file could be opened automatically, i.e. with Winzip or Winrar by showing files that cannot be used. Be sure to install Java correctly and that the file has been opened with Java. In case open the file by clicking with the key on the right and select "open with" and "Java".

ATTENTION: the PC must be connected to internet to execute the updates.

ATTENTION: to avoid sudden switching off during the update of the firmware, verify to have enough battery charge or connect the laptop to the charger.

CAUTION: do not disconnect the USB cable during the firmware uploading.

- Switch the bike on
- Open the "Polini updater" program
- If the PC is connected to other USB devices, select the COM related to the motor.



- The program will show the version of the firmware already installed on the motor, press the key "Upload to bike" at the top left. If a new version of the firmware is available online, it will update automatically; otherwise, it will be confirmed that on the motor the last version available has already been installed. Once the update has been completed, disconnect the USB cable, switch the bike OFF and then switch it ON.

RECOVERY PROCEDURE

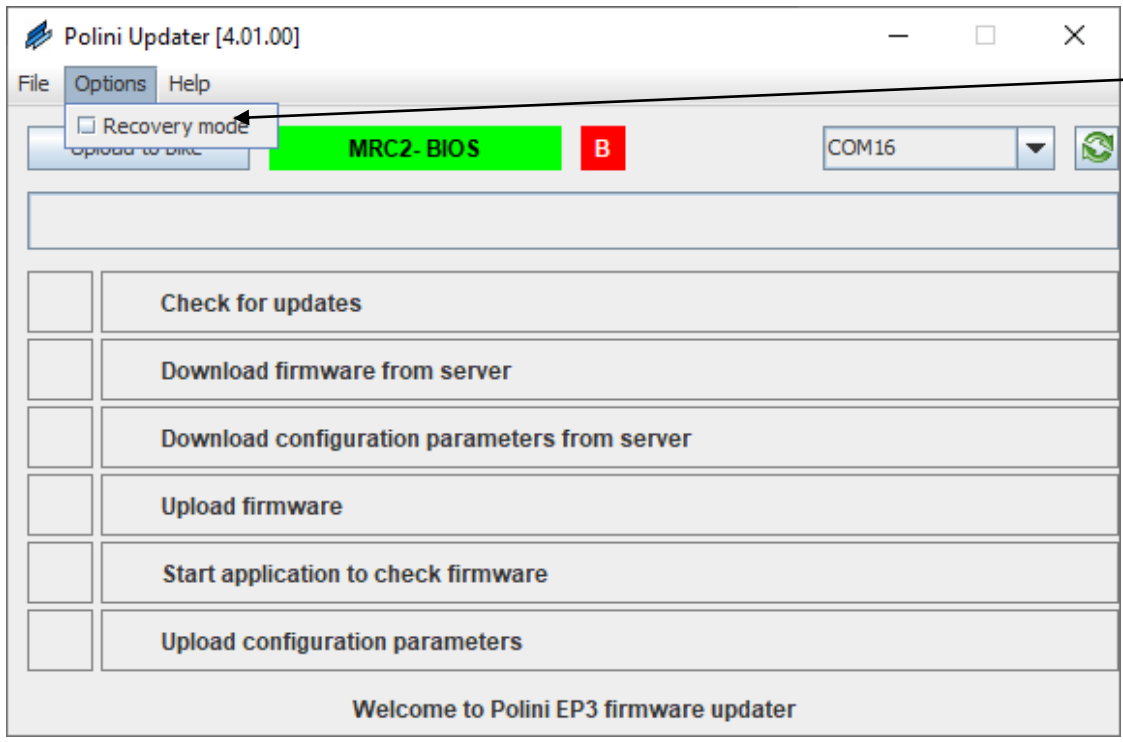
ATTENTION: this procedure must be executed exclusively if the firmware update has been interrupted before its finishing and, because of it, the bike switching ON is locked.

ATTENTION: the PC must be connected to internet to execute the updates.

ATTENTION: to avoid sudden switching off during the updating of the firmware, verify to have enough battery charge or connect the laptop to the charger.

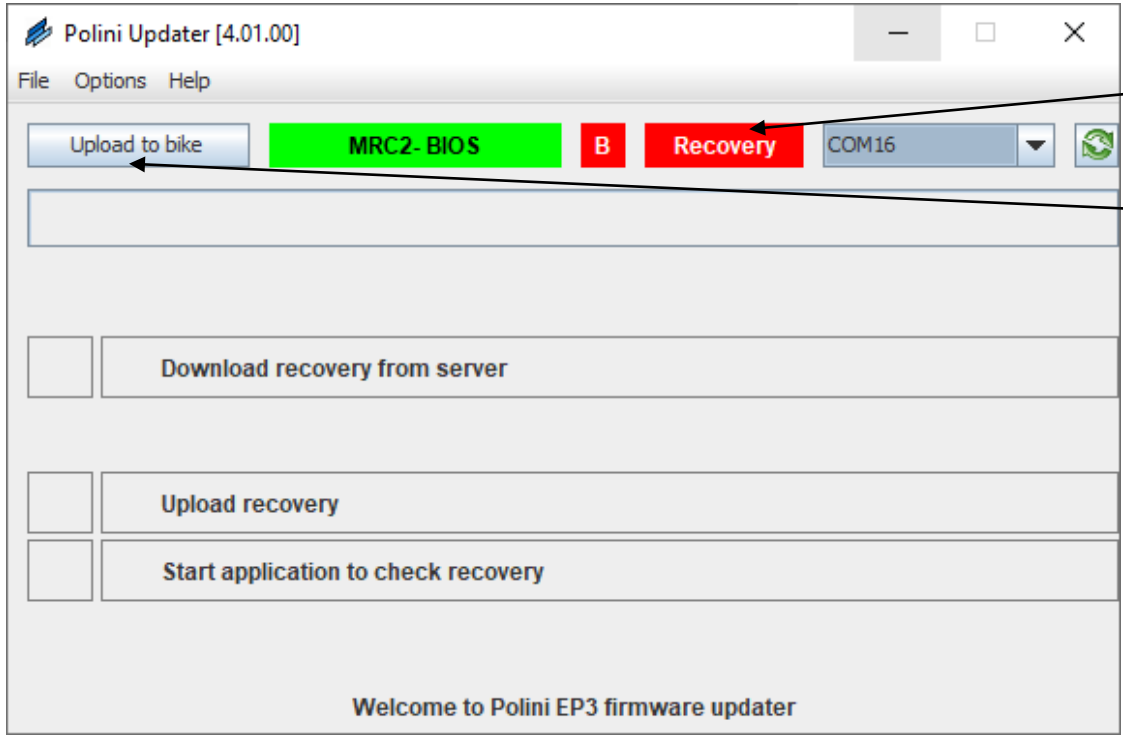
CAUTION: do not disconnect the USB cable during the firmware uploading.

- Connect the USB cable to the motor and to the PC. Check the battery is OFF.
- Open the "Polini updater" program
- If the PC is connected to other USB devices, select the COM related to the motor.



1- Select RECOVERY mode.

- At the top left of the "Options" menu select RECOVERY
- On the main screen the indication RECOVERY mode activated will appear in red.
- Press the top left key "Upload to bike" to start the updating. When the operation is over the firmware updating is complete.



2- RECOVERY mode selected

3- Premere per far partire il RECOVERY

- When the process is complete, disconnect the USB cable and start the bike again.