



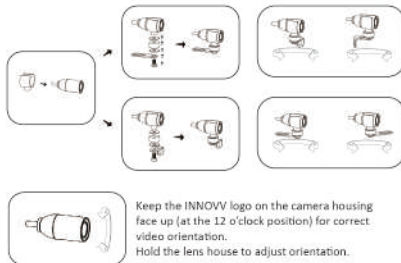
A Product Over View



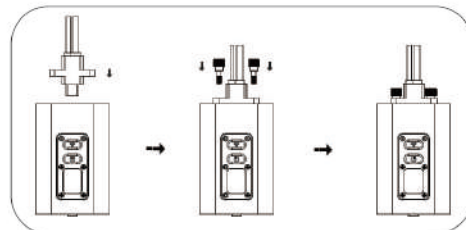
B Installation Reference



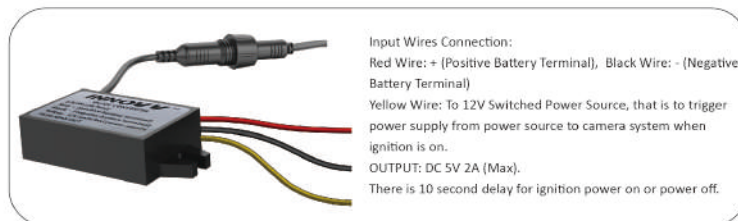
C Camera Bracket Installation



D Camera and DVR Connection



E 12V DC Converter Connection



F Installation Instructions

- Locate a position that will allow the best view.
- Ensure the mount is secure and will not interfere with the operation of the motorcycle. Consider the range of motion on the front forks of a motorcycle.
- The camera may be mounted in several positions using the provided mounting accessories. Ensure you do not unscrew camera case or it may cause damage to lens inside.
- Route the camera cable in a safe manor back to the DVR location. Ensure the cables are not subjected to a pinch point or in an area that will expose it to high temperature from the engine, and keep cable away from all of the other cables (particularly head light, tail light cables) to avoid EMI (Electro-Magnetic Interference).
- The C5 is designed to start/stop recording when the ignition is turned on/off.
- The yellow wire from the supplied DC 12V to 5V converter is to connect the switched power source which has power only when the main ignition switch is on. Red wire is to connect the reliable and stable 12V power source, like the positive terminal of battery. Black wire is to ground connection.
- Please keep a distance between DVR and Converter.
- USB port beside of memory slot work as factory service port only, not for powering.
- The C5 has an internal Mic to record audio. An external microphone (not included) can also be connected to the camera to record communications, etc.



- Please follow instructions below to download the INNOVV C5 mobile WiFi app for both Android & iOS.
- Please follow instruction below to format MicroSD card to be FAT32 before recording begins.
- Please do not attempt to repair, modify, or alter this product and/or it's accessories.

A Format MicroSD card to be FAT32

Follow one of below methods to format MicroSD card to be FAT32

- Formatting by App- App => Setting => Formatting => Yes (Red power button quick flashes)
- Formatting by buttons- 1. Press red power button once to stop flashing (Solid red), 2. Press WiFi button (Flashing) for 8 seconds. Red button power off and power on again (Solid red).
- Formatting on PC- if SD card is more than 32GB, download SD card formatter from https://www.sdcard.org/downloads/formatter_4/

B App download and Operation

B1 Downloading the App

- Search and download INNOVV C5 on the Google Play Store for Android or the App Store for Apple devices. Compatible with iOS 8.3 or Android 5.1 above.
- Scan QR code below to download INNOVV C5 App right to your device.
- Storage must be allowed from App permissions for downloading videos/photos from camera to your device.



For Android Device



For Apple Device



INNOVV C5 App Logo

B3 Recording

Click to enter into recording section.

Red dot is flashing if camera system is recording, Click to stop recording, and Click to start recording.

to adjust brightness. To view full screen video To exit full screen video.

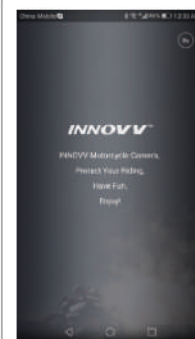
back button

Click To review recordings and photos.
Recordings and photos can be toggled to play, review, download or delete.

B2 App Connection

- Select INNOVV_C5_*** from WiFi networks to connect
- Settings => Wireless & networks => INNOVV C5
- Default password is 12345678

APP Screen Shots



C Package included

- 1x DVR,
- 1 x Lens with video cable,
- 1 x DC 12v to 5v converter,
- 1 x Bracket pack for lens,
- 1 x Bracket pack for DVR,
- 1 x SD Card Reader,
- 1 x User Manu,
- Memory Card not included

D Key Indicator and Function

Power Button	Trun ignition on, after 10 seconds power on delay, power button flashes red, recording starts.
	Power button is solid red and record stop
WiFi Button	WiFi button flashes green after recording started. And WiFi is stand-by for connection.
	A successful and continuous WiFi connection will be indicated by a solid green light. Press WiFi button to drop the connection, WiFi flashes green again.
USB Port	Works as factory service port only, not for powering
Reset Key	Hold down reset key to trigger a device reboot in case of error.

Operation and LED Indicator		
Operation	Power Button (Red Color)	WiFi Button (Green Color)
Live recording	Flashes red (1 times / second)	Flashes green or solid green
Recording stop	Solid Red	Flashes green or solid green
Photograph	Quick flashes red (3 times / second)	Flashes green or solid green
WiFi Connection stand-by	Flashes red or solid red	Flashes green (1 times / second)
WiFi Connected	Flashes red or solid red	Solid green
WiFi Terminated	Flashes red or solid red	Flashes green flash slowly
No Micro SD Card	Flashes red quickly (3 times / second)	Flashes green or solid green
SD Card Formatting	Solid Red => Off => Solid Red	Flashes green or solid green
Firmware Upgrading	Flashes red (1 times / second) => (1 times / second) => Red Off	Flashes green or solid green

E Trouble Shooting

Please refer to our troubleshooting instructions below for any problems or errors that may arise. Please also contact your INNOVV dealer for additional information and guides.

Trouble Shooting			
Fault	Button Indicator	Causes	Operation
WiFi connected, can not access App or App is processing only	WiFi button solid green Power button flashes red or solid red	1. WiFi has been disconnected 2. The distance between Mobile device & Camera system is too far, or the WiFi signal was blocked 3. The mobile device is not compatible, WiFi connection is weak	Turn WiFi network On and OFF, then reconnect. Move Mobile device close to Camera system and reconnect WiFi Upgrade or change the mobile devices
SD card in DVR, no recording after power supplied.	WiFi button flashes green Power button solid red	1. SD card was unreadable 2. SD card was broken or low speed 3. Loop Video was Off, SD card was fulfilled 4. Unstable connection between lens cable and DVR 5. Video cable was bended or pinch point, even broken 6. Wrong settings or System broken	Follow up the instruction to format SD card Change SD card to be high speed (Class 10 or Above) Change SD card or Format SD card Disconnect Type c connector and re-connect. Check video cable Reset camera system, or Re-install firmware
SD card in DVR, no recording after power supplied.	WiFi button off Power button off	1. Too low power supply from the power source 2. Wires from 12v to 5v converter made wrong connection to the power source 3. In line fuse from 12v to 5v converter was blew. 4. DVR is overheat	Check power supply. Correct wire connection. Replace the inline fuse. DVR cool down, press reset button.
Can not download videos/photos from camera to device.		INNOVV C5 app is not allowed to store data to your device.	Storage must be allowed from App permissions for downloading videos/photos from camera to your device Settings => App Permissions => INNOVV C5 => Storage Settings => App => INNOVV C5 => Storage
Live recording disappear after device on screen lock mode.		Screen locked and living recording can not display on the lock screen	Display on the lock screen Settings => App => INNOVV C5 => Notifications



Like us on facebook!

www.facebook.com/Innovv