

Stainless steel cleanroom grid shelves welded

L 600 - 2000 mm

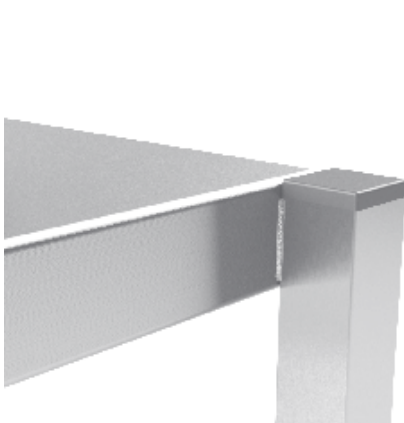
B 400 - 700 mm

H 1800 mm

↑ ↓ 503 mm



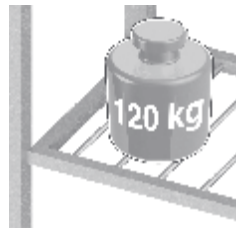
Standard features



Heavy duty welded construction

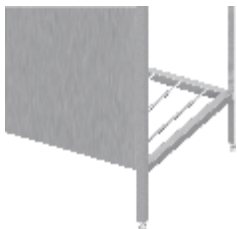


Adjustable hard plastic feet (amplitude 30 mm +25/-5)

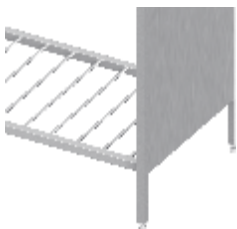


Welded frame. Legs made of stainless steel tube 25x25 mm.
Max loading 120 kg/shelf (uniform layout)

Accessories



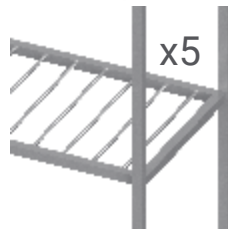
Rear panel. (L ≥ 1600 mm made from 2 parts) + 8%.



Side panels €132.



Set of stainless steel wheels Ø 125 mm, 2 pcs with brakes €192.



Five shelves +22%.



PROCLEANROOM
BUY YOUR SUPPLIES ONLINE