

Stainless steel cleanroom cupboard with shutting doors

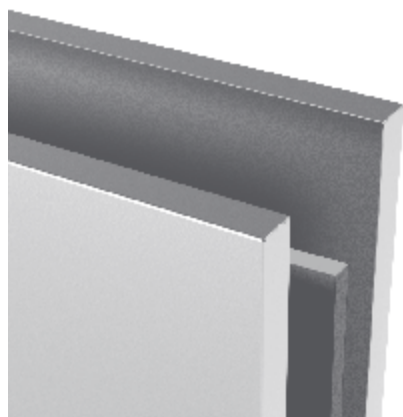
L 500 - 1200 mm

B 600 - 700 mm

H 1800 mm



Standard features



Triple layer soundproof doors with noise dampening pads



Easy to change height of the shelf



Integrated hygienic door handles

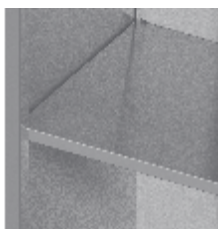


Adjustable stainless steel feet (amplitude 65 mm +50/-15)

Accessories



Lock €82



Additional shelf + 6%