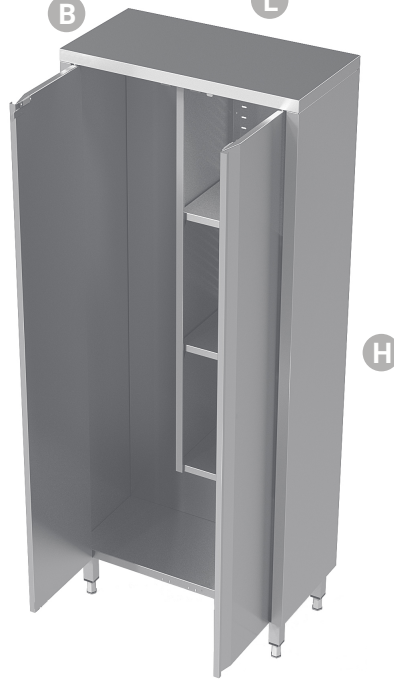


Stainless steel cleanroom cupboard for cleaning equipment

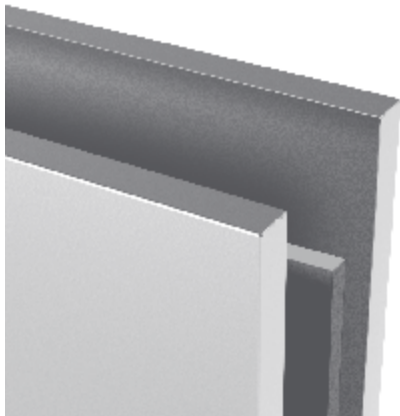
L 800 - 1000 mm

B 400 - 500 mm

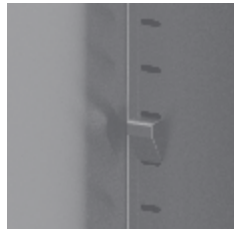
H 1800 mm



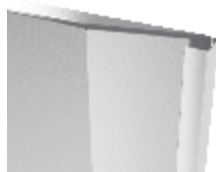
Standard features



Triple layer soundproof doors with noise dampening pads



Easy to change height of the shelf



Integrated hygienic door handles

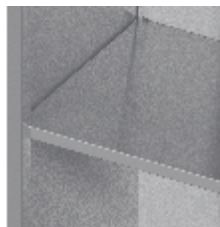


Adjustable stainless steel feet (amplitude 65 mm +50/-15)

Accessories



Lock €82



Additional shelf + 3%