

bimos

SADDLE STOOL





WHERE WORK IS ELEVATED AND THERE IS A LOT OF MOVEMENT, IT DOES ITS JOB.

Our saddle stool is ideal for elevated workstations, especially where mobility is required or legroom is limited.

Thanks to its specific optional features, the saddle stool is ideally suited for different areas of use.



Bimos is Europe's leading manufacturer of the best industrial and laboratory chairs. For over sixty years, using our specialist knowledge, technical expertise and dedication, we have been ensuring that seating keeps people productive, healthy and happy at every workplace.

IDEALLY EQUIPPED

A STOOL FOR EVERY TASK

How good a seating solution is depends on how seamlessly it fits into its areas of use. The saddle stool is ideally equipped for any task.

High workstations. Outstanding mobility and legroom even in confined spaces

Industry. Robust, easy to clean, plastic base

ESD. Volume-conductive, ESD castors, reliable overall discharge

Laboratory/medical. Resistant to disinfectants, hygienic design, aluminium base

Cleanroom. Encapsulated mechanism, cleanroom-certified and ESD-compliant

Healthcare.
Resistant to disinfectants, hygienic design, maximum mobility

Service sector. Versatile, robust, easy to clean

Office workstations. For high work situations, very mobile, compact dimensions



FEATURES

A STOOL THAT KNOWS WHAT'S IMPORTANT.

Active, dynamic sitting. Intuitive 3D seating dynamics

Pressure equalisation and seating comfort.
Three-zone upholstery foam

Choice of upholstery. Artificial leather or Duotec fabric

Comfortable and ergonomic saddle seat.
Supports the natural S-shape of the spine

Hygienic design. Crease-free and seamless upholstery; encapsulated mechanism and column cover to prevent the accumulation of dirt and dust

Maximum mobility. Large, smooth-running universal, ESD, laboratory and cleanroom castors

Compact, lightweight and mobile. Space-saving plastic base or aluminium base (dia. 540 mm)

Can be customised to suit the workstation and user. Extralarge seat height range (540–800 mm), infinitely height-adjustable using a hand switch or optional, a particularly hygienic foot release

Always compliant with standards. GS-tested, ESD, cleanroom or laboratory



SADDLE STOOL FOR THE INDUSTRY

A STOOL THAT KNOWS ITS JOB. THE ROBUST INDUSTRIAL STOOL IS MOBILE AND MADE FOR HIGH WORKSTATIONS.

We have developed a robust and flexible saddle stool for the industrial sector. Thanks to its three-zone upholstery foam, it is soft and comfortable. Its extra-large universal castors are smooth-running and easy to clean. The latter applies to the entire stool: Its materials and seamless design make it particularly easy to clean.

The saddle stool enables ergonomic sitting even with frequent changes of position. Thanks to the intuitive seat height adjustment, it can be easily adapted to elevated workstations and different body heights.

Please note. The ESD version discharges electrostatic charges into the floor. Its overall discharge across all components in accordance with DIN EN 61340-5-1 makes the saddle stool safe for electronic workstations.



SADDLE STOOL FOR LABORATORIES

MADE FOR PRECISION. THE SPACE-SAVING STOOL FOR CONCENTRATED AND CLEAN WORKING.

Laboratories are demanding work-places. The laboratory version of the saddle stool is characterised by its high level of comfort and hygienic design. It is easy to clean, can be disinfected and prevents the build-up of germs and bacteria thanks to its

crease-free and seamless upholstery, as well as the encapsulated mechanism. Its three-zone upholstery foam is soft and makes sitting comfortable. The extralarge laboratory castors are smooth-running and easy to clean.

Please note. The saddle stool is also available as a cleanroom version and is certified to air cleanliness class 3 according to DIN EN ISO 14644-1. It is also ESD-compliant.



SADDLE STOOL FOR THE MEDICAL SECTOR

FOR WHEN YOU NEED TO GET CLOSER: THE HYGIENIC AND COMPACT MEDICAL STOOL.

In the medical sector, it is important to remain mobile and get close to patients. Thanks to its hygienic design, the upholstery is seamless and crease-free. This prevents germs from settling.

The medical stool is easy to clean and can withstand common disinfectants. Its large laboratory castors are smooth-running and easy to clean and its upholstery is soft and comfortable thanks to a three-zone upholstery foam.

Thanks to its design, the saddle stool provides enough space for the legs even in the smallest space.



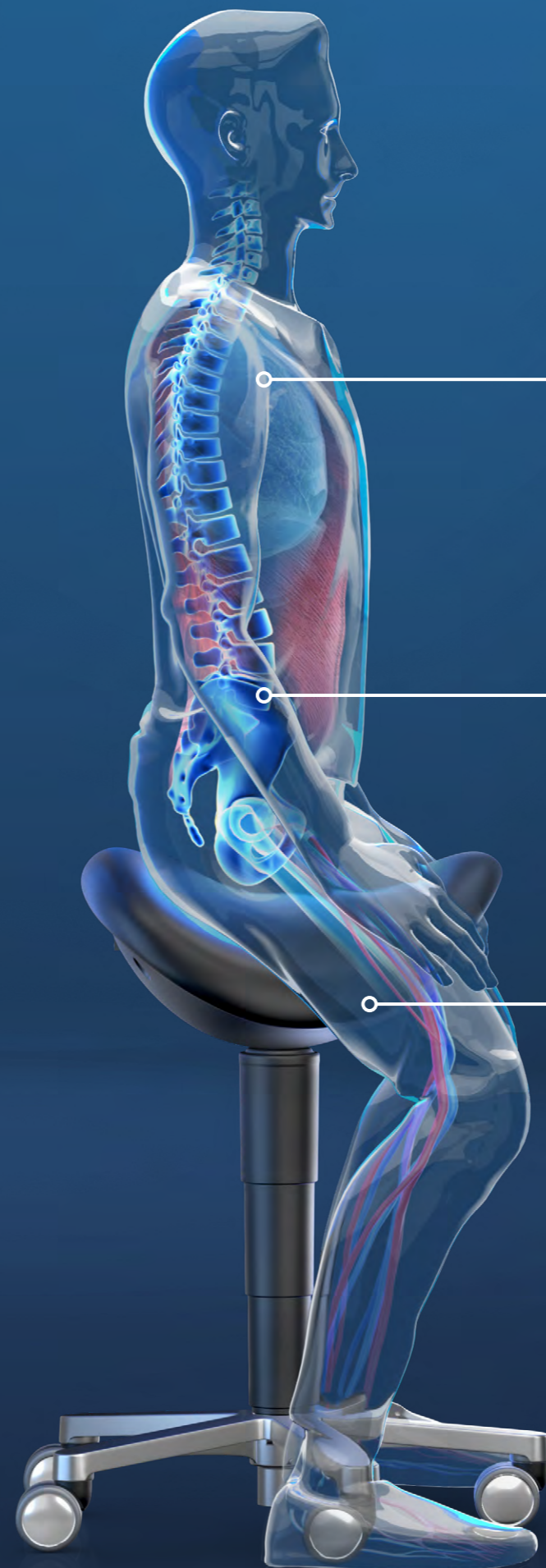
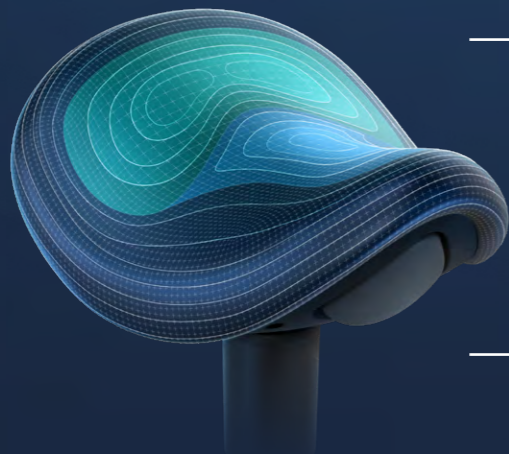
THE SADDLE SHAPE

SUPPORTS THE NATURAL POSTURE.

The saddle shape tilts the pelvis and supports the natural S-shape of the spine. In addition, the 3D seat dynamics actively promotes dynamic sitting.



Three-zone upholstery
foam: Soft, comfortable
and maximum seating
comfort.



Breathing support.
The upright sitting posture
can open up the airways
and allows you to breathe
more freely.

Strengthening the back.
The comfortable saddle seat
supports the natural S-shape
of the spine and promotes an
ergonomic sitting posture.

Active sitting. The sitting
position can be easily
varied thanks to the 3D seat
dynamics. This can prevent
tension.

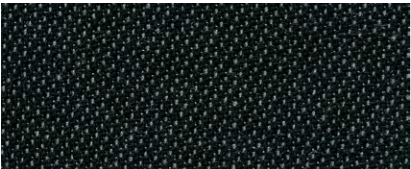
LABORATORY FOR
MOVEMENT
BIOMECHANICS

Accompanying development with literature
research and study in relation to pressure
equalisation and comfort perception.

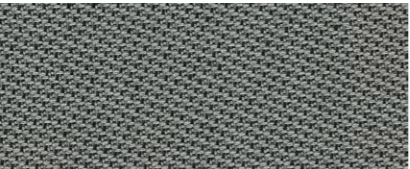
SADDLE STOOL

ALL OPTIONS
AT A GLANCE.

Duotec fabric



black 6801 **black ESD** 9801



grey 6811 **grey ESD** 9811

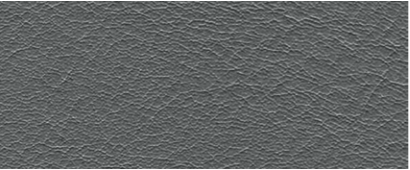


blue 6802 **blue ESD** 9802

Synthetic leather Magic



black MG01 **black ESD** MG01



grey MG11



blue MG02



apricot MG76



mint MG84



light beige MG05

Base



Black plastic 217



Polished aluminium 521



Allround **ESD** **Laboratory/medical** **Cleanroom ESD-compliant** **Cleanroom ESD-compliant with foot release**

Saddle stool with castors
Seat height 540–800 mm

Basic equipment/ options	Colour	Order no.	9473	9473 E	9473 L	9473 R	9F73 R
Duotec fabric	Black	6801	○	-	-	-	-
	Grey	6811	○	-	-	-	-
	Blue	6802	○	-	-	-	-
ESD Duotec fabric	Black	9801	-	○	-	-	-
	Grey	9811	-	○	-	-	-
	Blue	9802	-	○	-	-	-
Synthetic leather Magic	Black	MG01	○	-	○	-	-
	Grey	MG11	○	-	○	-	-
	Blue	MG02	○	-	○	-	-
	Apricot	MG76	○	-	○	-	-
	Mint	MG84	○	-	○	-	-
	Light beige	MG05	○	-	○	-	-
Synthetic leather Magic ESD	Black	MG01	-	○	-	○	○
Plastic base	Black	217	●	-	-	-	-
Aluminium base	Polished	521	-	●	●	●	●
3D seating dynamics	-	-	●	●	●	●	●

● Standard ○ Option



Contactinformatie:

shop.procleanroom.com
shop@procleanroom.com
+31 (0)40 209 40 24

ProCleanroom
Meerheide 231
5521 DX Eersel
The Netherlands



COMPANY

PRODUCTS

We reserve the right to technical modifications. Content may contain typographical variations.
The paper comes from sustainable and responsibly managed forests.
07/24: 2WSH_PR001_IAEN



bimos.com