



## Wi-Fi 6 Mesh System



MERCKU

[www.mercku.com](http://www.mercku.com)

Confidential. February 2021

# Awarded “Networking Product of the Year” 2021

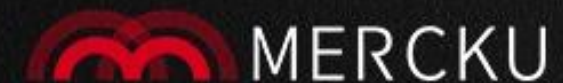


Consumer  
Technology  
Association™

**Smart Home Division  
Mark of Excellence**

2021 WINNER

\*2021 Mark of Excellence Award in the Networking Product of the Year category. The Award series annually recognizes the tech industry's top smart home innovations.



# Powerful Wi-Fi 6 Mesh System



## Powerful Performance

Proprietary technology, combined with the power of Wi-Fi 6, brings better connectivity to any space



## Award-winning Design

Integrates seamlessly with your décor, envisioned by our award-winning design team



## 360° Remote Management

Powerful management capabilities for users and operators, anywhere and anytime



## User- & Operator optimized

Ubiquitous connectivity by bridging and meeting expectations of end-users and service providers



✓ EasyMesh

✓ IPv6

✓ Qualcomm

Coverage up to

**3,000** sq.ft. | **280** sq.m.

\*This is a Mercku laboratory performance. The real environment may cause changes.

## Technical Specifications

### Wireless

EasyMesh AX1800 Router 2×2  
2.4 GHz - IEEE 802.11b/g/n/ax  
5 GHz - IEEE 802.11a/n/ac/ax  
High-performance WHEMS antenna

### Processor

Qualcomm 1.2 GHz Quad-Core

### Ports

2 × 1000Base-T Ethernet LAN ports  
1 × 1000Base-T Ethernet WAN port

### Security

WPA2 / WPA3 Encryption  
Over-The-Air Updates  
Parental Controls

### Memory

1Gb NAND Flash and 512MB DDR3 RAM

### Power

DC 12V/1.5A 100-240V 50/60Hz

### Dimensions

140×52.6×206 mm

## What's inside

1 × Mercku M6 Mesh Wi-Fi Router  
1 × Power Adapter  
1 × Ethernet Cable - 1 m  
1 × Set-up Guide

## Mercku App

Remote management with multiple advanced network features



# Wi-Fi 6 MESH ROUTER



### Wi-Fi 6

4X better than AC routers, even in dense environments



### MU-MIMO

Enhanced simultaneous data streaming and throughput



### OFDMA

Highly efficient data channeling to multiple devices at once

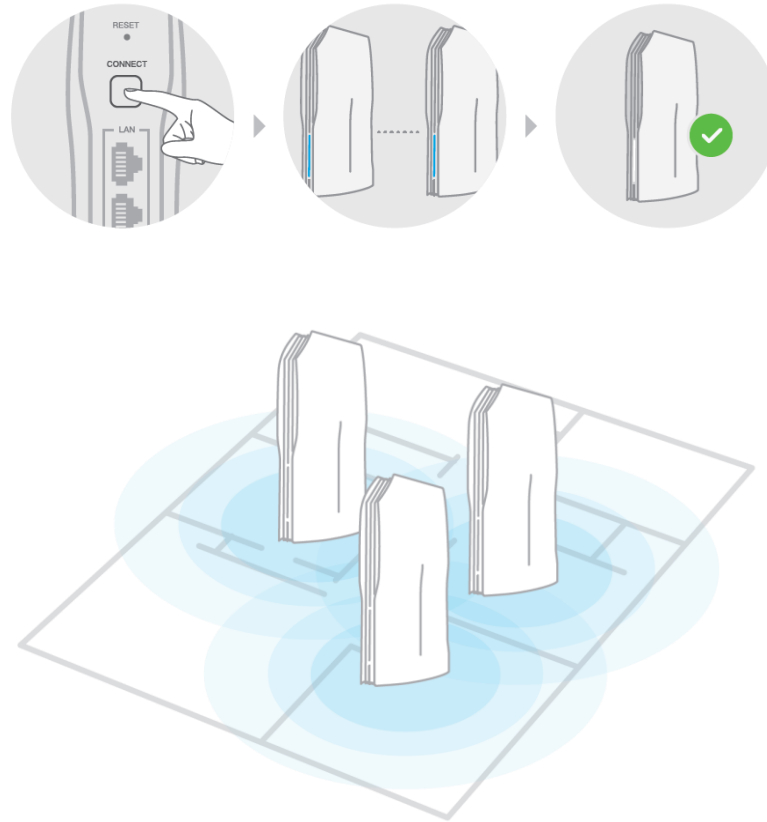


### Target Wake Time

Reduces device's power and battery consumption

Power your home with the most advanced Wi-Fi yet

# Simple plug-and-play experience for users





# Examples of other Wi-Fi 6 mesh systems



tp-link Deco X20

~\$ 399.99 (3-pack)



RT-AX1800  
RT-AX56U

~\$149.99

~\$199.99



Max-Stream

~\$149.99



Nighthawk MK62

~\$129.99



COVR

~\$269.99 (2-pack)



xFi Advanced Gateway XB7 → Very poor reviews



eero 6

~\$ 270.00 (3-pack)

# Feature overview of Wi-Fi 6 mesh systems

	EasyMesh	Beamforming	BSS Coloring	Target Wake Time	App + Portal	Bridge Mode	Guest Wi-Fi	NOC
Mercku M6	✓	✓	✓	✓	✓	✓	✓	✓
TP-Link Deco X20	✗	✓	✓	✗	✓	✓	✓	✓
Linksys MR7350	✗	✓	✓	✗	✓	✓	✓	✗
Asus RT-AX1800	✗	✓	✗	✗	✓	✓	✓	✗
Asus RT-AX56U	✗	✓	✗	✓	✓	✓	✓	✗
Netgear MK62	✓	✓	✗	✗	✓	✓	✓	✗
D-Link DIR-X1860	✗	✓	✓	✓	✓	✗	✓	✗
eero 6	✗	✓	✓	✓	✓	✗	✓	✗

**Note:** Only a few systems offer EasyMesh certification, NOC, BSS Coloring and Target Wait Time in combination. Mercku's partners can leverage these more unique attributes when marketing the offering to subscribers

# The M6 product family is growing in 2021



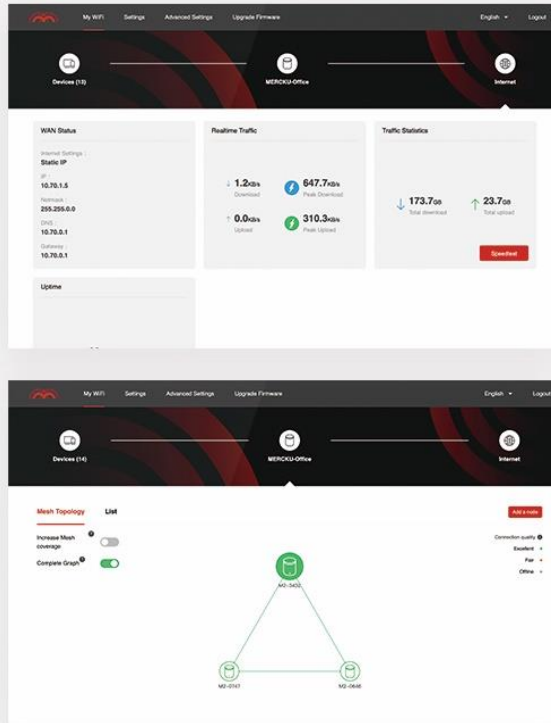
concept phase

	M2	M6	M6c	M6s
Global MSRP	\$ 99	\$ 139	\$ 119	\$ 199
Throughput	AC 1200	AX 1800	AX 1800	AX 3000
Antenna	2x2	2x2	2x2	4x4
Bands	Dual-band	Dual-band	Dual-band	Tri-Band
Chipset	Realtek, 1 GHz single-core	Qualcomm, 1.2 GHz, quad-core	MediaTek, 880 MHz, dual-core	Qualcomm, 1.2 GHz, quad-core
Flash	1 Gb NAND	1 Gb NAND	1 Gb NAND	1 Gb NAND
RAM	128 MB DDR3	512 MB DDR3	256 MB DDR3	1 Gb DDR3
Mesh Wi-Fi	802.11s	EasyMesh R2	EasyMesh R2	EasyMesh R2
Mobile App	Yes	Yes	Yes	Yes
Remote Control	NOC + TR069	NOC + TR069	NOC + TR069	NOC + TR069
WAN / LAN	2* 1G	3* 1G	3* 1G	1* 2.5G, 2* 1G
Market launch	Since 2019	March 2021	July 2021	Winter 2021



# Supported with a 360° network management system

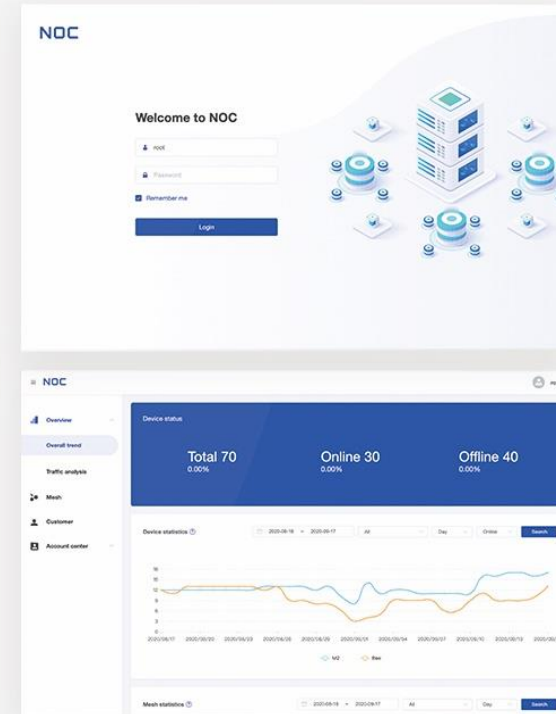
## Web UI



## Mobile App



## NOC

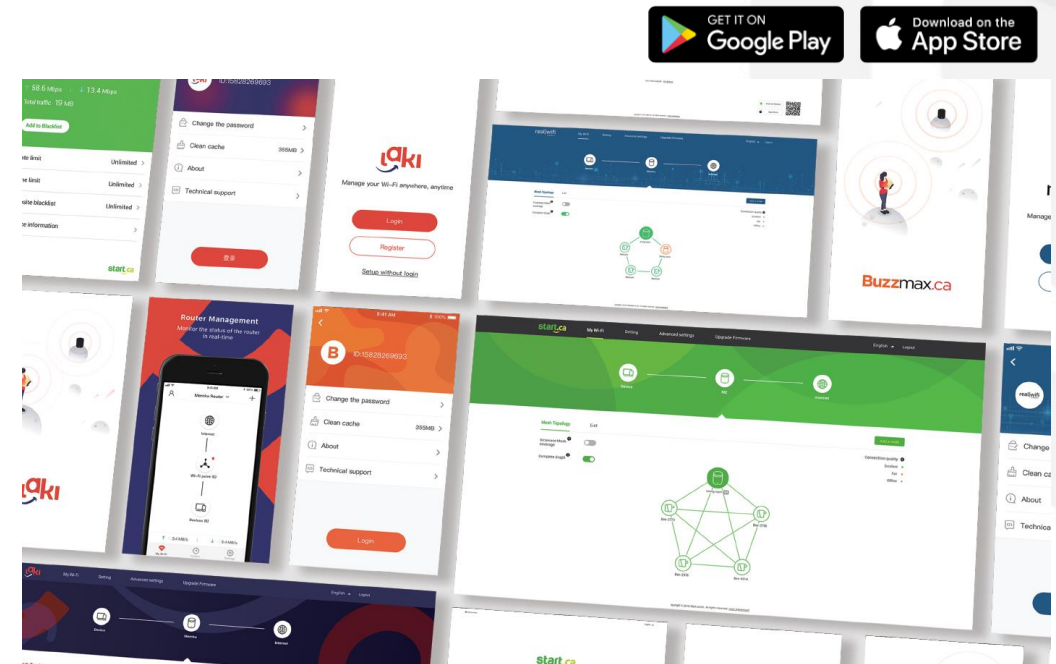


## TR-069

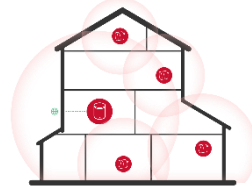
The TR-069 Settings page includes fields for 'URL', 'Username', 'Password', 'Inform Interval (s)', 'Path', 'Port', 'Username(optional)', and 'Password(optional)'. It also has an 'Enable' checkbox and a 'Save' button. The footer contains the copyright notice: 'Copyright © 2020 Orion Telekom d.o.o. All rights reserved. User Agreement'.

# Flexible product design for strong branding opportunities

- **Advanced customization options** including hardware, firmware, packaging, mobile app, Web UI, remote management integration and marketing assets
- **Flexible development** approach allows ISPs to capitalize on new market dynamics as identified



# M6: examples of supported features



## Management

Device list

Wi-Fi Settings

Internet Settings

Parental Controls

Port Forwarding

VPN, VPN Passthrough

DMZ Host IP Address

Router Mode, Bridge Mode

Static IP Lease

Diagnostic Tools

Clone MAC Address

...and more

## Mesh Wi-Fi

EasyMesh R2

Managed setup

Client & device roaming

Client steering

Band steering

Node steering

Self-healing

Mesh Topo

Mesh management

Node management

Setup helper

...and more

## Advanced Wi-Fi

TR069, TR098

NOC

IPv4, IPv6

System modularity

Beamforming

MU-MIMO

1024 QAM

BSS Coloring

Target Wake Time (TWT)

Wireless Backhaul

OFDMA

...and more

## Smart Wi-Fi

Quality of Service (QoS)

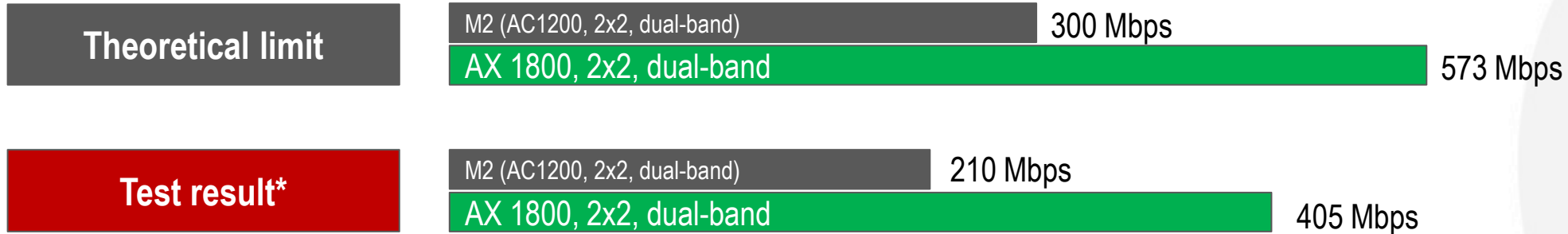
Remote configuration

Smart connect

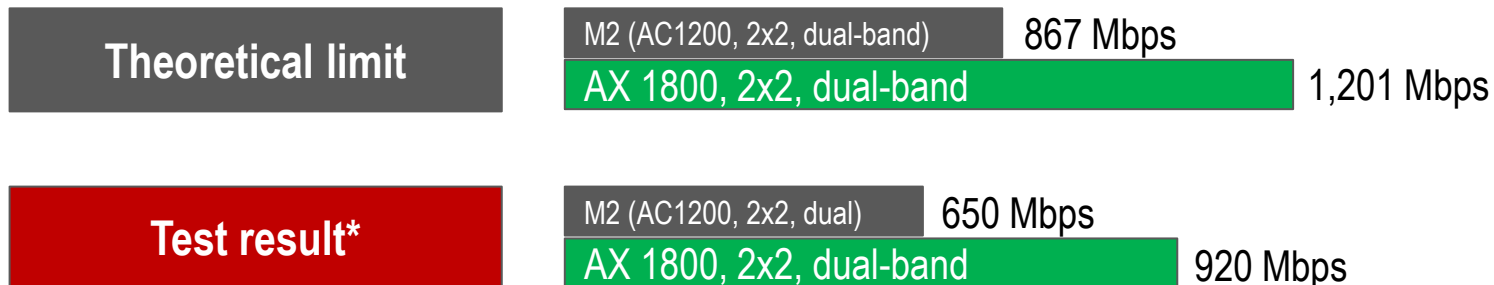
Channel selection

# Wi-Fi 6 (M6) compared to Wi-Fi 5 (M2) throughput

## Throughput (Single 2.4G channel)



## Throughput (Single 5G channel)



\*Test result may vary according to different testing environment

\*\* The test is comparing performance of AC speeds (M2) with AX speeds

# Wi-Fi 6 technology building blocks

## Multi-User MU-MIMO



## OFDMA



## Beamforming



## 160 MHz Ch. Bandwidth



## Target Wake Time



## BSS Coloring



## 8 Spatial Streams



## 1024-QAM

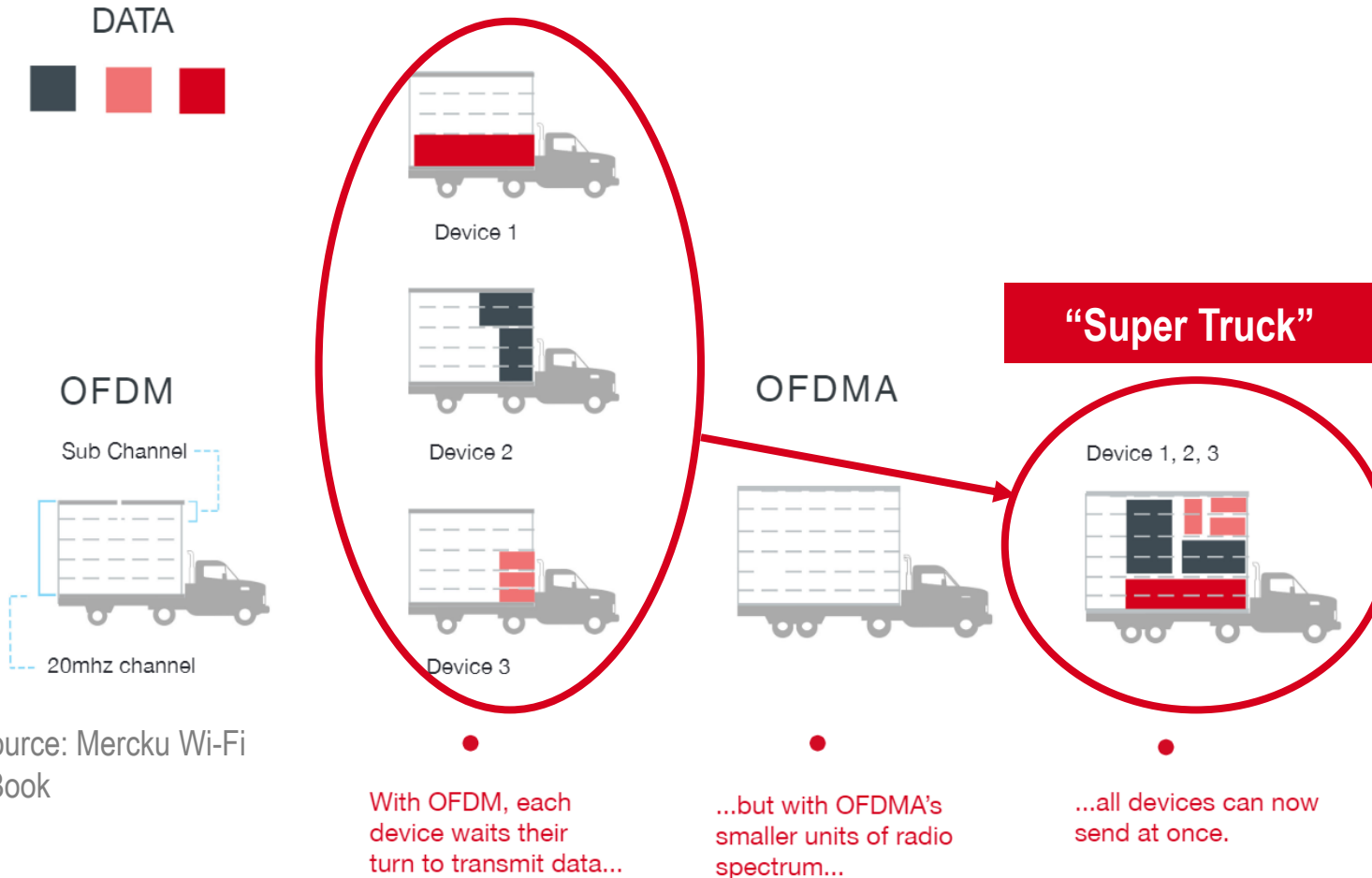


- **MU-MIMO:** Services multiple devices simultaneously
- **OFDMA:** Better dividing up the spectrum
- **Eight Spatial Streams 5GHz band:** Double the number of spatial streams
- **Beamforming:** Directing signals toward specific clients
- **Target Wake Time:** Negotiate with devices when/how often to wake up
- **1024-QAM:** encoding more data in same spectrum
- **BSS Coloring:** Ignoring traffic that is communicating on another network
- **160 MHz channels:** Increases bandwidth to deliver greater performance

Source: Qualcomm

# Better OFDMA and MU-MIMO

Orthogonal Frequency-division multiple access & multi-user multiple-in multiple-out



Source: Mercku Wi-Fi  
eBook

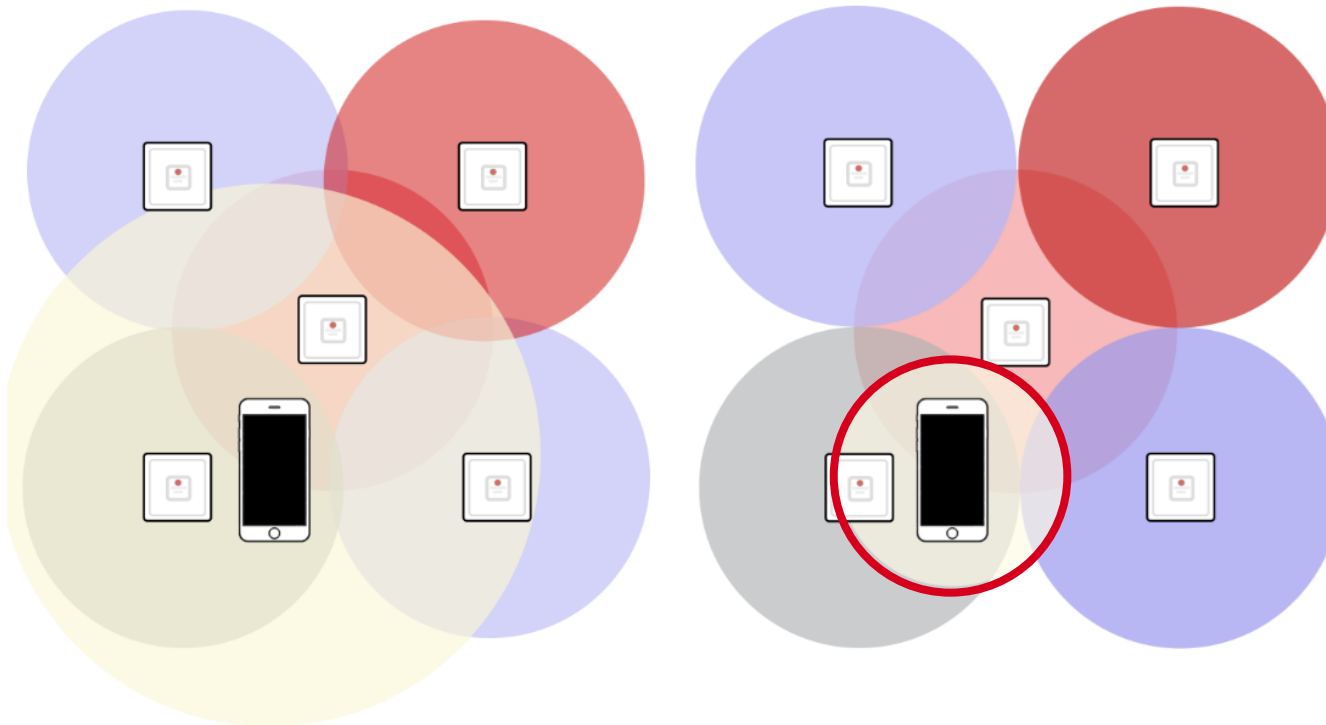
## Why is MU-MIMO better with Wi-Fi 6?

- Wi-Fi 6 uses **8 Stream** DL/UL (Downlink, Uplink) MU-MIMO
- Multiple users can access the router simultaneously without any noticeable decreases in bandwidth quality - up to a point



# BSS Coloring

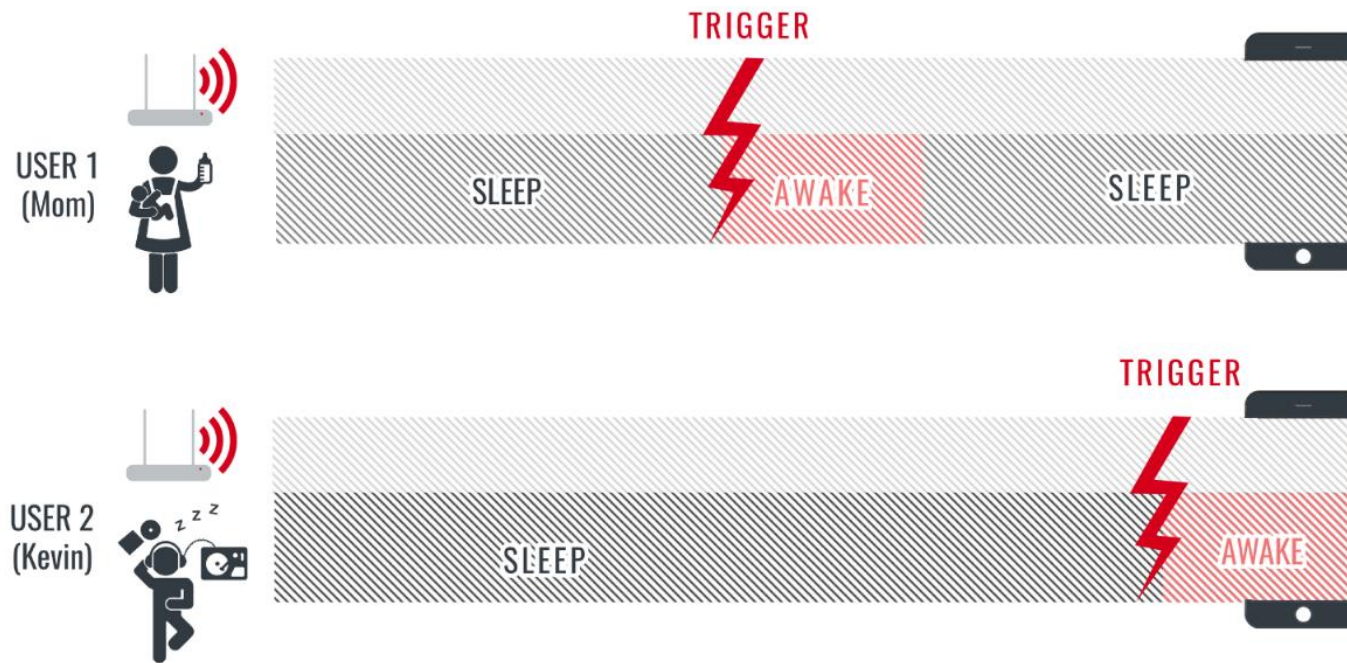
Basic Service Set Coloring



## What is BSS Coloring?

- Reduce Co-Channel Interference in high density environments
- AP colour codes devices to associate them with close AP
- Increase battery life of device via adjusting and lowering of Wi-Fi power
- AP will ignore other colours

# TWT Target Wake Time

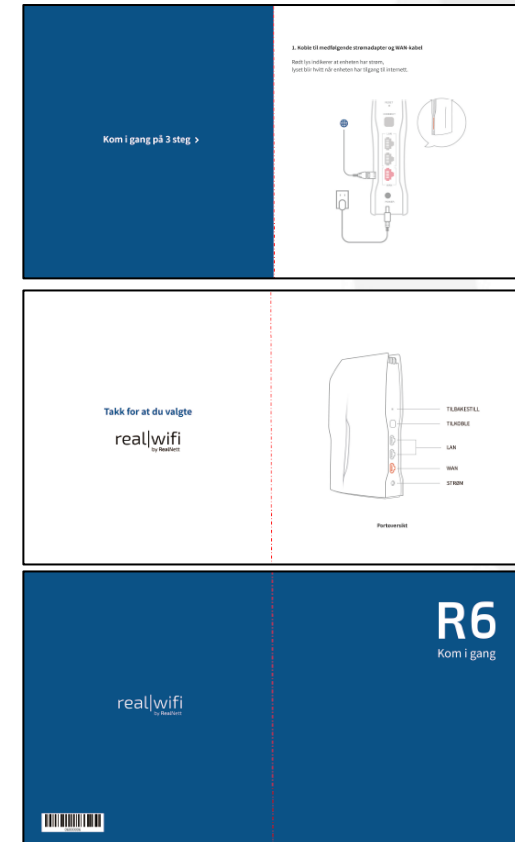
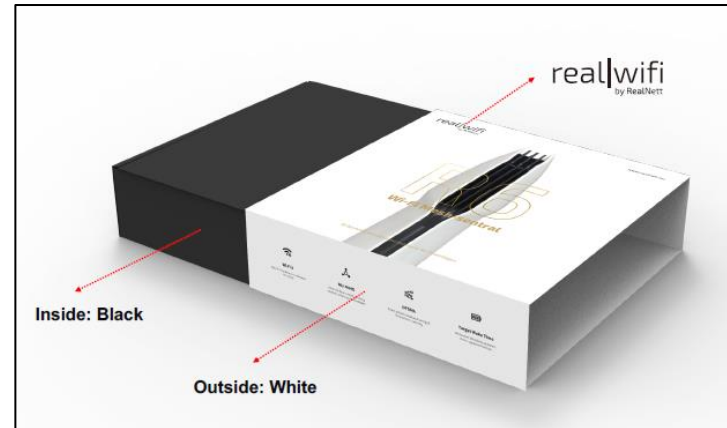
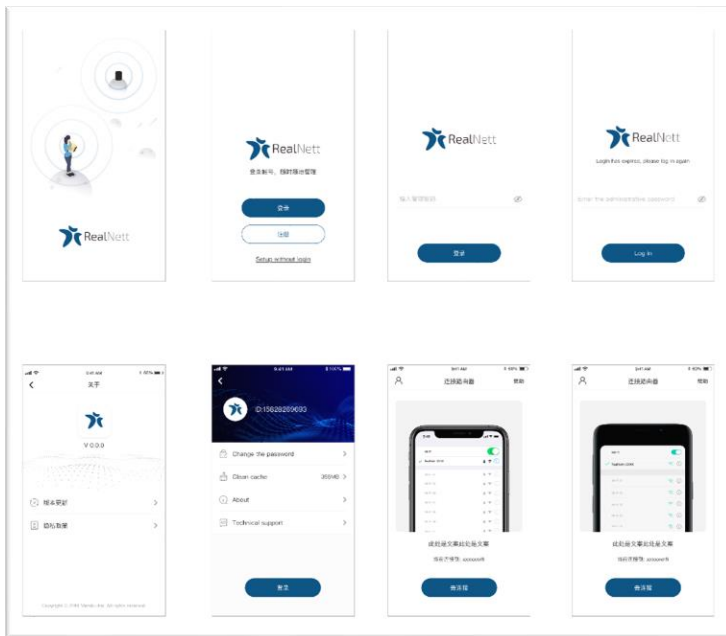


## What is target wake time?

- AP and device can schedule when device “wakes up” to send data using radio
- Increase battery life for IoT devices with sensors and scheduled reporters
- Decrease unnecessary recurring noise on network

# Client example: RealNett, Norway

<https://www.realnett.no/realwifi>





# Welcome Home

Manage your home anywhere, anytime



[www.mercku.com](http://www.mercku.com)

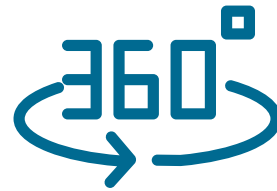
# Appendix

# Mercku provides Connectivity-as-a-Service to ISPs



## Hardware

High-performance Wi-Fi mesh systems with award-winning industrial design



## 360° Network Management

Management tools include Mercku's Network Operations Center (NOC), Mobile App, and Web UI



## Advanced Features

Enhanced security and additional premium feature integration with Mercku systems



# [HaaS] Hardware-as-a-Service

## Technology leadership for partners

- Frequent over-the-air updates & innovative CPEs

## Option for rental/leasing

- Friendly rental or purchasing terms

## Wall-to-Wall connectivity

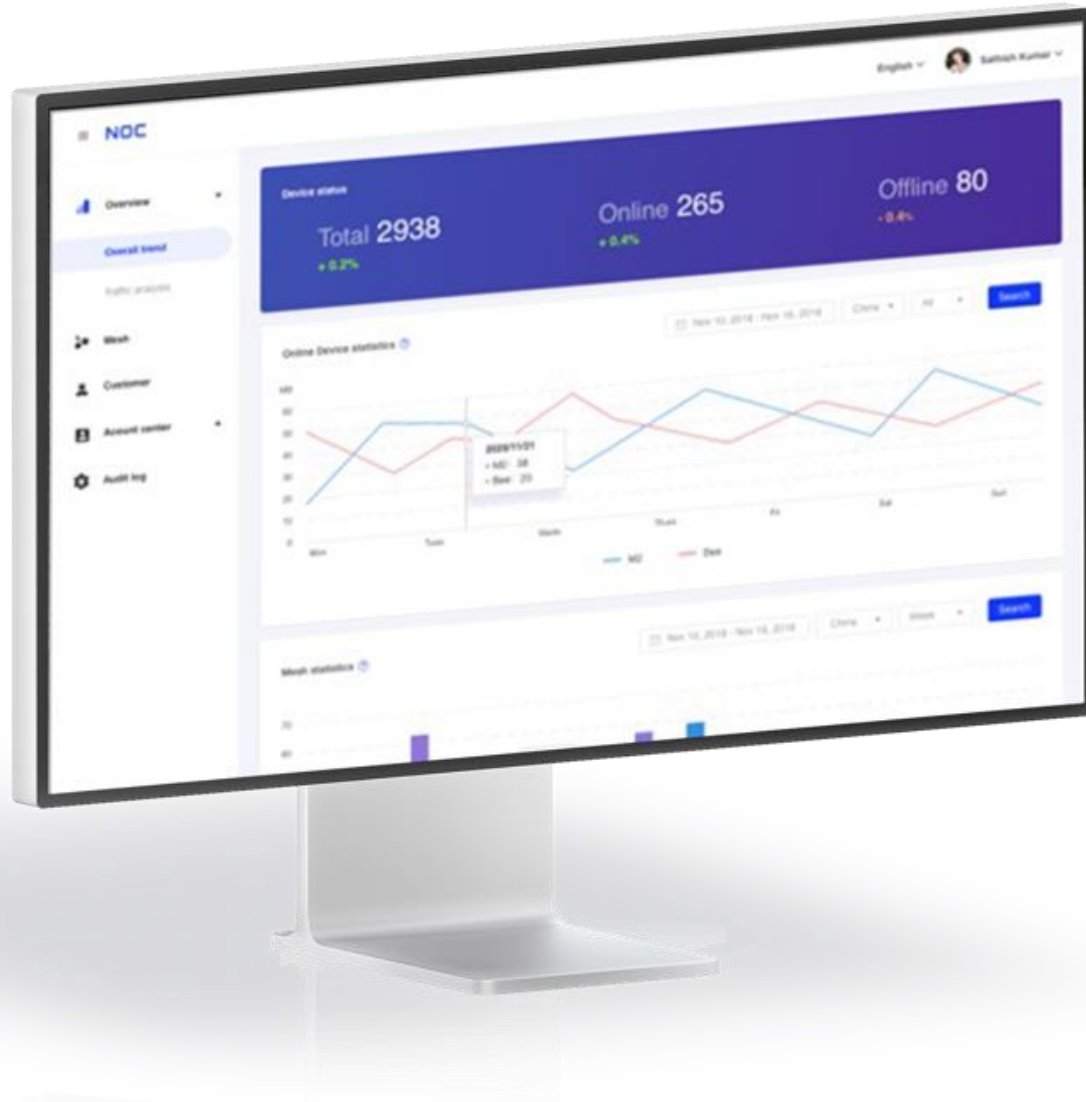
- Reliable, powerful Wi-Fi systems to blanket entire home with connectivity

## More Products on the roadmap

- Smart home devices, indoor positioning, modem gateways, Cellular CPEs,...



# [SaaS] Software-as-a-Service



## OTT Network Operations Center (NOC)

- A platform for ISPs to remotely monitor, manage and optimize their customers' home connectivity
- Helps ISPs improve service quality, lower customer service costs, reduce truck rolls, and conduct data-driven business optimization

## Monthly subscription

- Monthly service fee to augment customer service teams
- Data-driven insights help drive business optimization

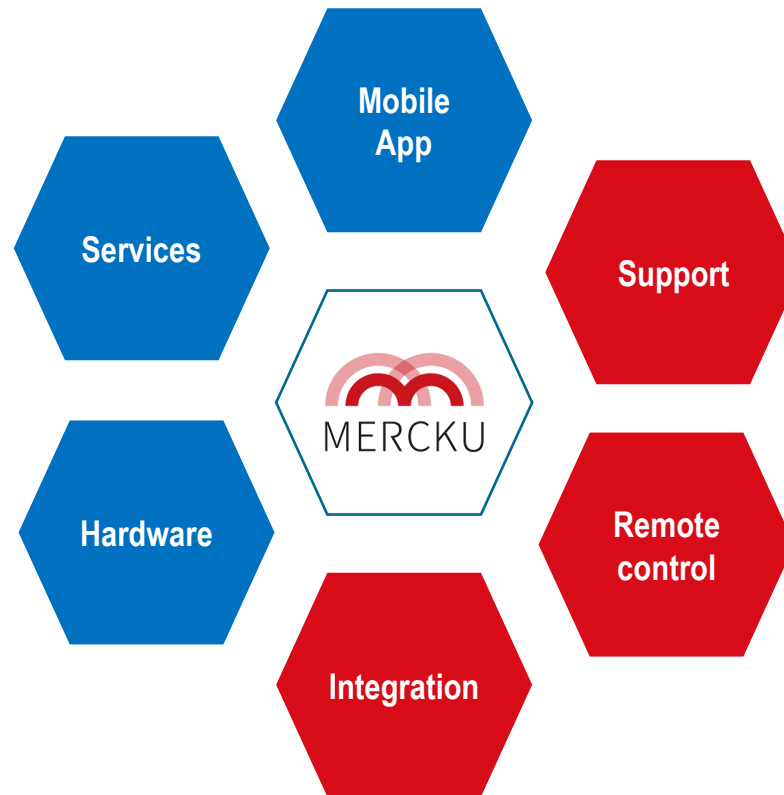
# Solutions are optimized for subscribers and operator



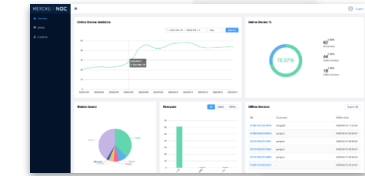
## User optimized



- User-friendly UX & UI
- Focus on speed and performance
- App with many controls



## Operator optimized



- Customer service augmentation
- Reliable, powerful, affordable solution
- RMM Remote monitoring and management



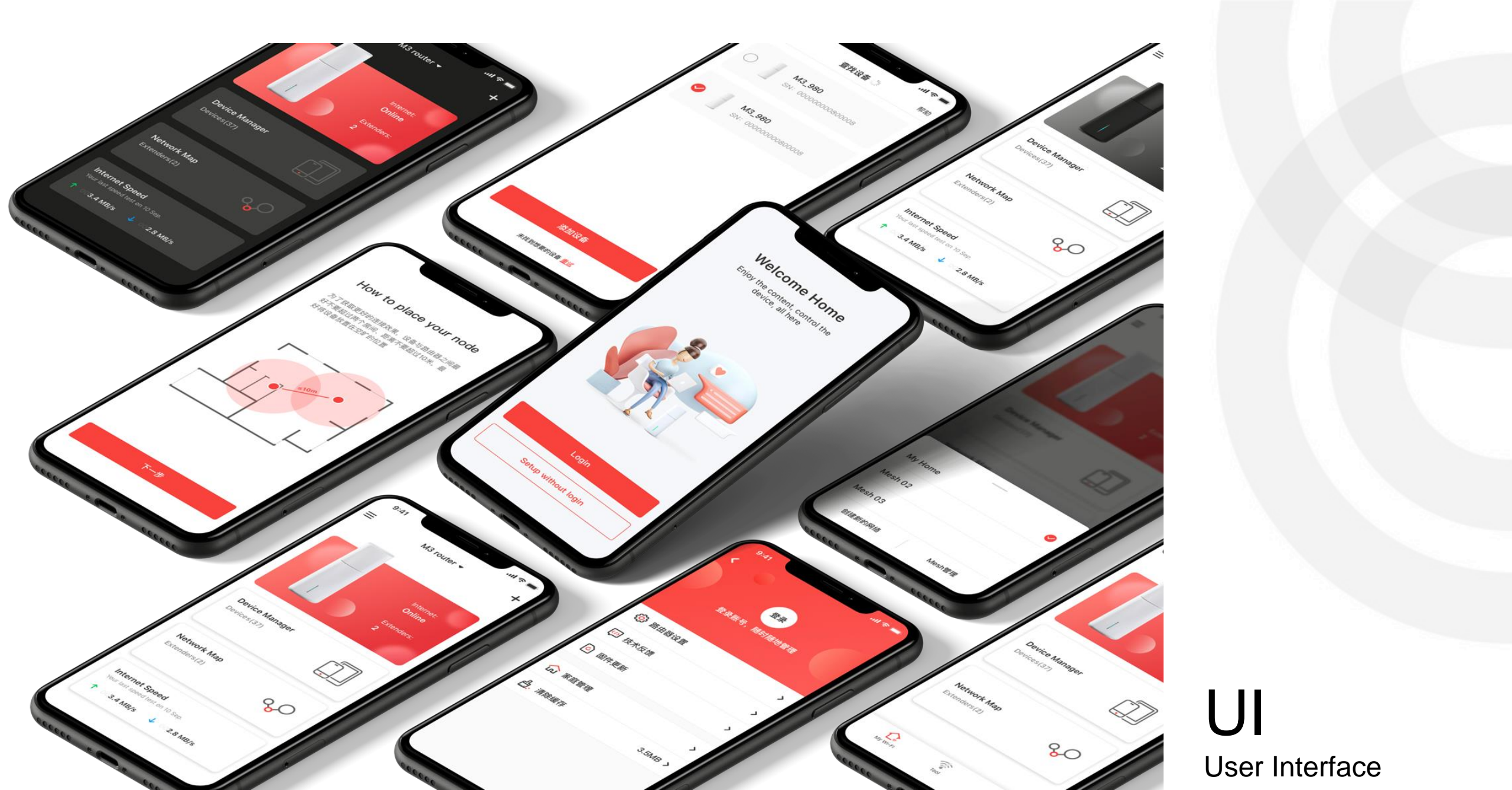
**Router**  
Access Point



# Package

Product Packaging

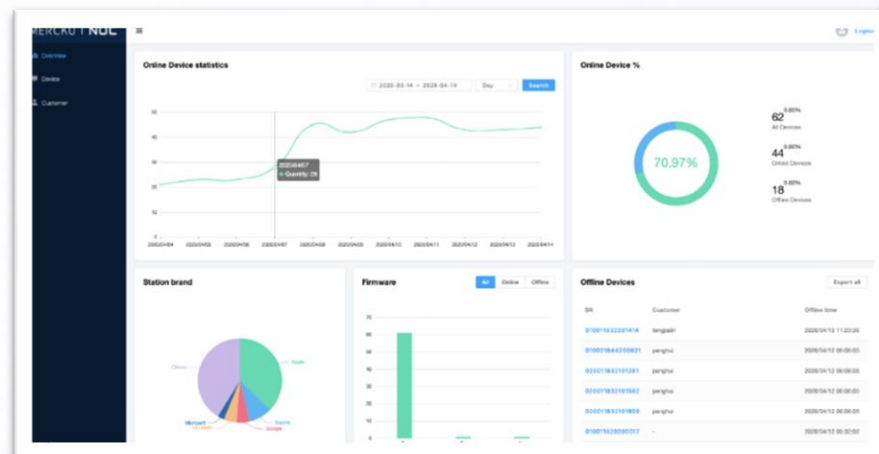
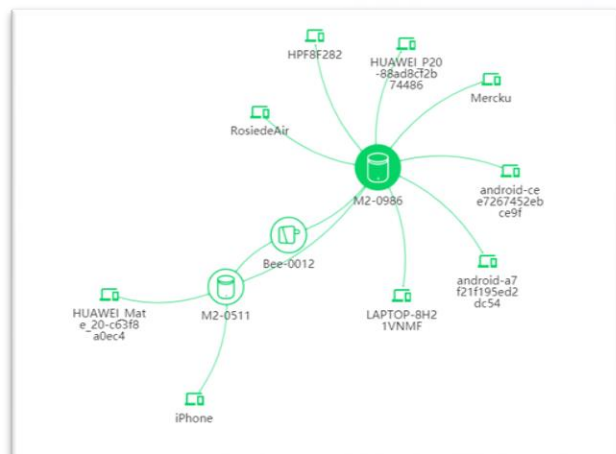
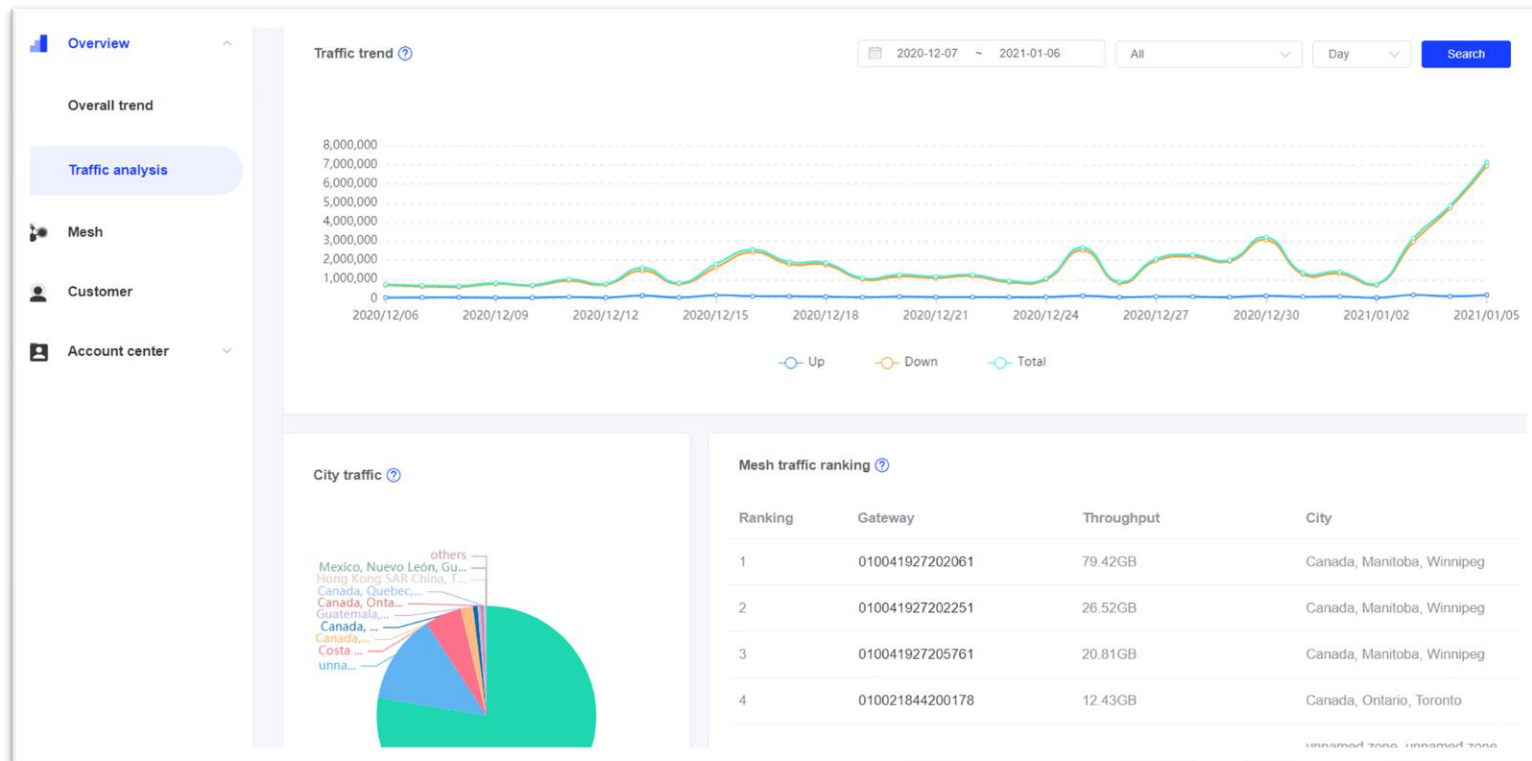




# UI

User Interface





**NOC**

Remote Control