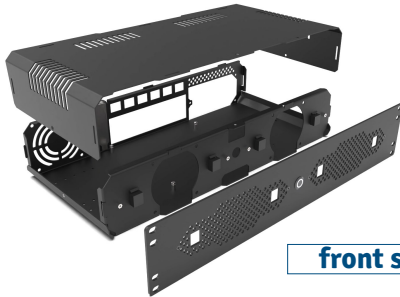


### Product overview

## 19 inch Rack Mount 2U mini-ITX



front side

### MYELECTRONICS RACKMOUNTS FOR MINI-PCS

MyElectronics designs and manufactures all kind of Rack Mounts for Mac mini, Mac Studio, Intel NUC, Raspberry Pi, Jetson and Mini-ITX.

#### NUC Rack Rackmounts



#### Mac Studio Rackmounts



#### Raspberry Pi Rackmounts



#### Mac mini Rackmounts



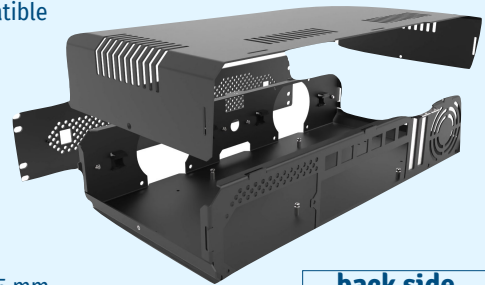
### OWN PRODUCTION AND DESIGN

Since we design and produce everything ourselves, we are very flexible and we can also make custom designed Computers on request. We already delivered many private label PCs in wall-mount or 19 inch. And even PCs in color and with lasered company logo on the front.



#### Specifications:

- Short depth (225 mm only!)
- Lightweight: made of high-grade Aluminum
- Suitable for SFX / SFX-L power supply unit\*
- Max. 5x 2.5" SSD+ 1x 2.5" SSD (with SFX PSU)
  - or Max. 1x 3.5" HDD + 1x 2.5" SSD (with SFX PSU)
- Max. 5x 2.5" SSD (with SFX-L PSU)
  - or Max. 1x 3.5" HDD (with SFX-L PSU)
- 2x PCI low-profile slot (suitable for Dual Slot PCI)
- 4x Connector inserts front (available are USB, HDMI, LAN, Audio)
- 6x Connector inserts back (available are USB, HDMI, LAN, Audio)
- Space for 3x fan 80 x 25 mm
- 100% Mini-ITX compatible
- Turing Pi 2 compatible
- Thin-ITX compatible



back side

#### Size:

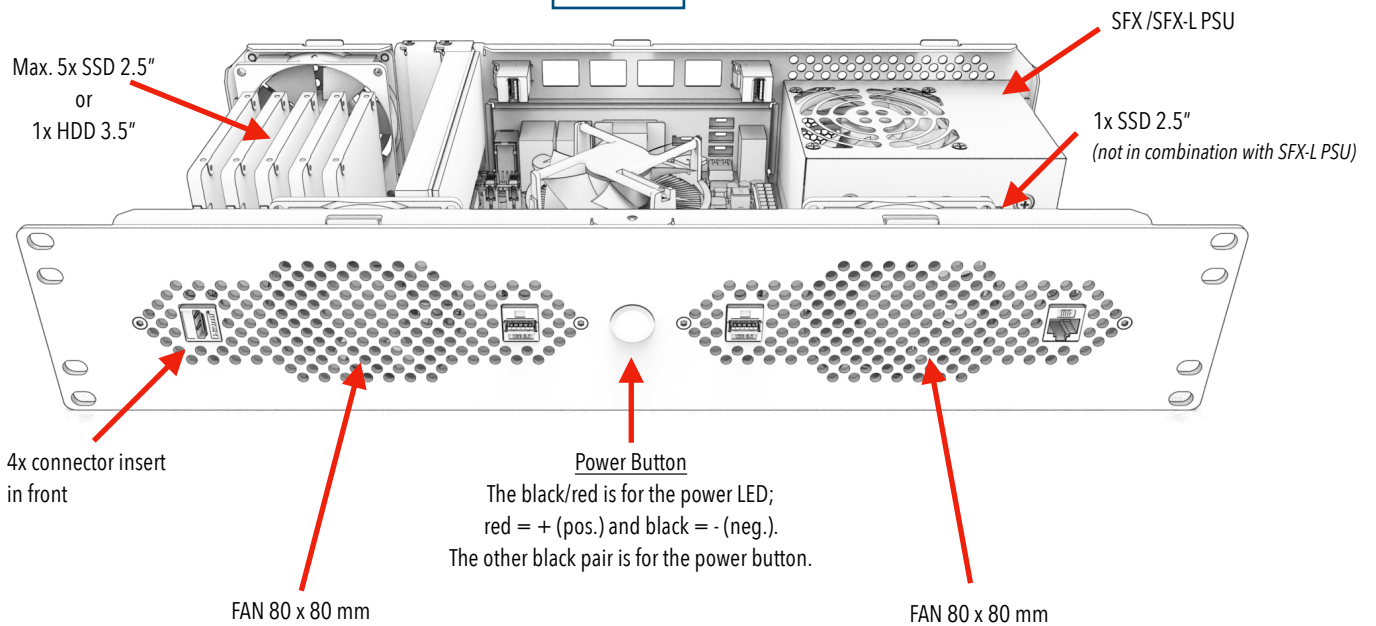
- Height 2U - 88.5 mm
- Width 19 inch - 483 mm
- Depth 225 mm
- Weight 1400 gram

#### Included:

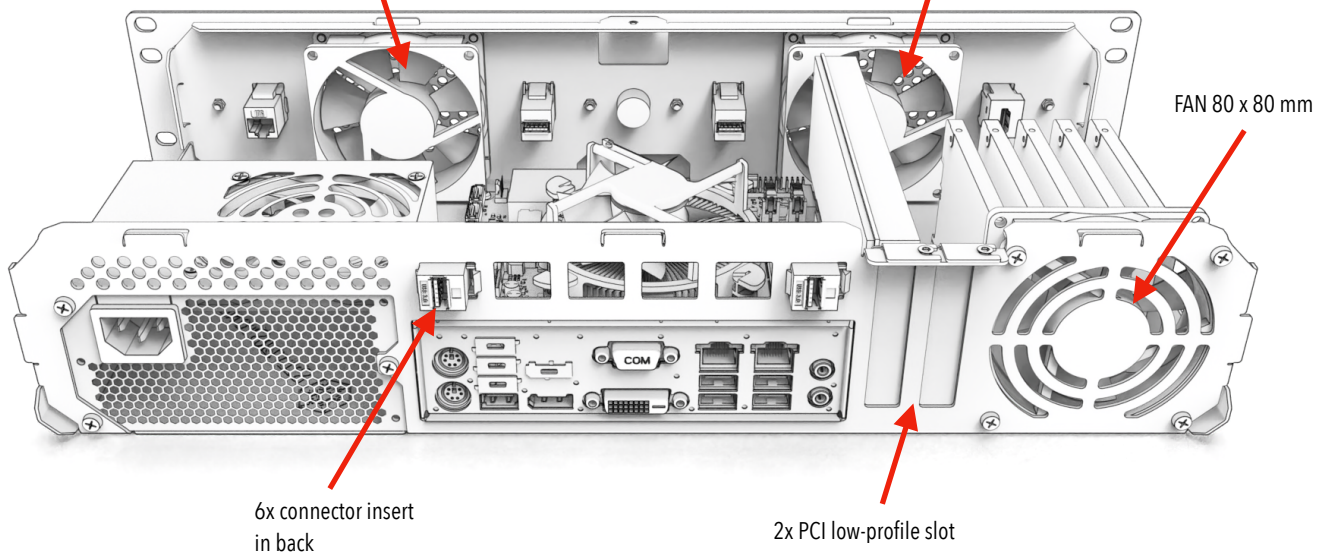
- Power Button with LED
- PCI low-profile blinds
- 4x Connector slot blinds in front
- Screws for mounting Motherboard, HDD and SSD's



## Front



## Back



\* Due to various worldwide and European regulations, we don't offer a PSU. You can locally source a power supply according to the SFX or SFX-L standard.

\* You can use the small rectangular slots on the back to feed the cable from the I/O plate of the board to the inside front of the case and snap in the connector (USB/HDMI/LAN/Audio)

