



Product overview

19 inch Rack Mounts Raspberry Pi

Especially for the Raspberry Pi 5 we developed a whole range of 19 inch rack mounts!

Including a line of accessories like blank covers and inserts/connectors for LAN, USB3, USB-C, Audio and HDMI.

MyElectronics RackMounts for mini-PCs

We design and manufacture all kind of mini PC Rack Mounts for Intel NUC, Raspberry Pi, Mini-ITX and Mac mini / Mac Studio in house.

When more computer power is needed, we build and supply 19 inch short depth servers.

Intel NUC Rack Mounts



Mac mini Rack Mounts



Mac Studio Rack Mounts



Mini-ITX Rack Mounts



Own production and design

We are very flexible and we also make custom designed computers on request.

We already delivered many private label PCs in wall-mount or 19 inch. And even PCs in color and with lasered company logo at the front.



MyElectronics BV

Havinghastraat 28

1817DA Alkmaar

The Netherlands

+31 (0)72-5812990

www.myelectronics.nl

E-mail: sales@myelectronics.nl

1 to 5 units of Raspberry Pi 1U 19 inch Rack Mount FRONT REMOVABLE!



Front-loading/-releasing with space for PoE HAT

All Rack Mounts compatible
with Raspberry Pi 5 !!

2U Rack Mount for 16x RB Pi FRONT REMOVABLE!



All RB Pi's
hot swappable
from the front!

Space for 16x Pi and 16x PoE Hat

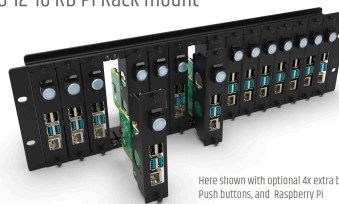
'Pro Enclosed Front Removable' Rack mount



NUC, Jetson and other
trays available too!

3U Rack Mount for 12-16x RB Pi FRONT REMOVABLE!

3U 12-16 RB Pi Rack mount



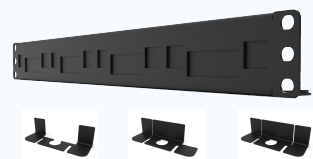
All RB Pi's
hot swappable
from the front!

Space for:
12x Pi + 12x SSD or 16x Pi



Any combination of
Intel NUC & Raspberry Pi
in one 1U rack mount

1 to 4 units of Raspberry Pi
blank covers with snap-off parts
to open/cover any combination



Accessories For Raspberry Pi Rack Mounts



HDMI CONNECTOR/INSERT WITH
DETACHABLE CABLE MICRO-HDMI > HDMI A

Product number: 6654



HDMI CONNECTOR/INSERT WITH
DETACHABLE CABLE HDMI A > HDMI A

Product number: 6564



USB-C CONNECTOR/INSERT WITH
DETACHABLE CABLE

Product number: 6554



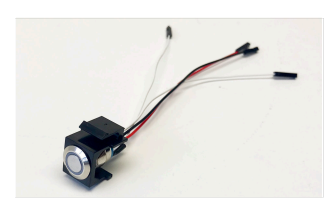
USB 3.0 CONNECTOR/INSERT
WITH DETACHABLE CABLE

Product number: 6517



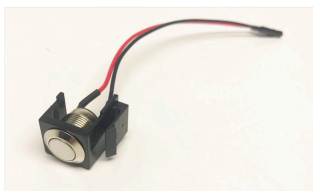
AUDIO CONNECTOR/INSERT
WITH DETACHABLE CABLE

Product number: 6568



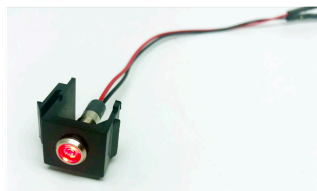
SNAP-IN MOMENTARY PUSH BUTTON
SWITCH WITH A BLUE LED RING 3-9V

Product number: 6730



SNAP-IN MOMENTARY
PUSH BUTTON SWITCH

Product number: 6731



SNAP-IN LED RED 3-6V.
PRE-WIRED WITH PIN HEADERS

PRODUCT NUMBER: 6733



SNAP-IN LED GREEN 3-6V.
PRE-WIRED WITH PIN HEADERS

PRODUCT NUMBER: 6732



MOUNTING KIT FOR POE HAT IN
RASPBERRY PI RACK MOUNT

Product number: 6667



CONNECTOR SLOT BLIND PLATE /
BLANK COVER

Product number: 6578



www.myelectronics.nl

sales@myelectronics.nl