

# RAM-4X

## tube cleaning system

The Goodway RAM-4X tube cleaning system is designed for dry and/or wet tube cleaning jobs. It's one of the most powerful tube cleaners that Goodway offers and is therefore suited for a wide variety of cleaning applications ranging from heat exchanger tube cleaning to dry cleaning of piping and boiler tube cleaning jobs. The RAM-4X is an electrically powered device with a fixed brush speed of 1725 revolutions/minute.

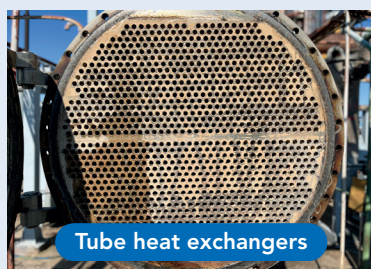
The RAM-4X can be used for virtually any tube diameter.



### Tube cleaning applications



(Exhaust) boilers



Tube heat exchangers



Tube evaporators



Process piping

Use the RAM-4X for wet/dry tube cleaning of tube heat exchangers, exhaust- and firetube boilers, process piping, and more.

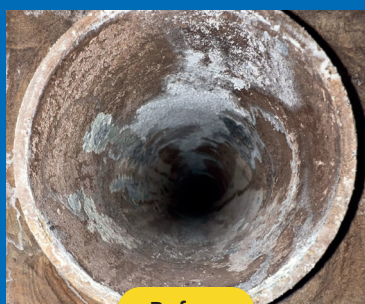


We bought two RAM-4X systems from Goodway Benelux to dry clean our flour piping. The rotating spider brushes easily remove fouling and allow us to reach the maximum capacity as it should be. The device is easy to use and effective. Our employees at both Swiss locations are enthusiastic about the new systems!

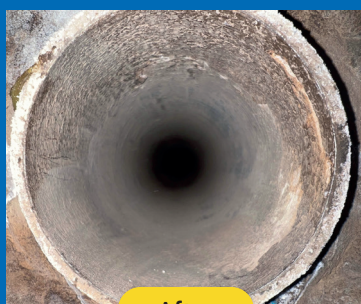


Groupe Minoteries – Switzerland

### Boiler tube cleaning results with RAM-4X



Before



After



### Flexible shafts



Wet cleaning shafts



Dry cleaning shafts

The RAM-4X can be used with or without water. Use the correct flexible shaft according to the type of cleaning which will be performed.

### Specifications RAM-4X

- Fixed brush rotation speed at 1725 RPM
- Can be used with or without water flush
- One direction rotation, use with threaded shafts and tools
- Water requirements: minimum 2 bar at 7,5 liters/minute
- Available in 230V, 50 or 60Hz or 115V, 50 or 60Hz
- Dimensions: 43 x 51 x 94 centimeters (LxWxH)
- Weight: 27 KG (59 lbs)

### Goodway tube cleaners

Check out all the Goodway tube cleaners here →

