

FLEX HUB

centrifugal scraper tools

Goodway flex hub scraper tools are used to remove medium to hard deposits (and blockages) inside of heat exchanger- and boiler firetubes. The carbon steel blades of the tool will automatically adjust to the tube inner diameter based on the centrifugal forces. Flex hubs are available in 4 different sizes to cover tube inner diameters between 13 - 102 millimeters.

Flex hub tools are used to clean smooth, straight, ferrous tubes.



Tube cleaning applications



(Exhaust) boilers



Tube heat exchangers

Use the flex hub centrifugal scrapers for wet/dry tube cleaning of tube heat exchangers, exhaust- and firetube boilers, and more.



4 different flex-hub sizes



GTC-225
13-25 mm

GTC-226
23-38 mm

GTC-231
38-51 mm

GTC-227
51-102 mm

Flexible shafts



Wet cleaning shafts

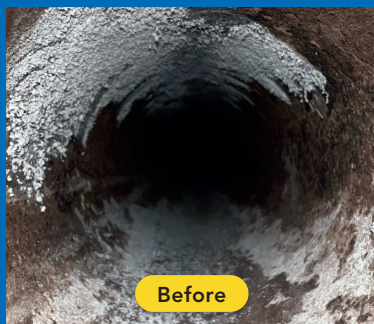


Dry cleaning shafts

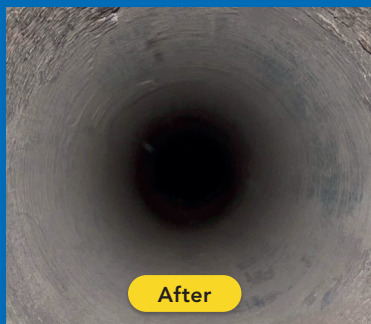
The flex hub scrapers can be used with or without water. Use the correct flexible shaft according to the type of cleaning.

2-pass cleaning of heavy fouling

When tubes are heavily fouled or even blocked, it is recommended to clean them using a 2-pass method. The first step is to use the flex hub scrapers to remove the hardest layer of deposits and/or unblock the tubes. Afterwards, a nylon abrasive brush (NAB) should be used to remove the remaining deposits inside the tubes. Make sure to have adequate airflow in the tubes during cleaning to directly remove any loosened deposits. This is very important to allow the tool to rotate freely inside the tubes.



Before



After

Specifications flex hubs

Use the flex hub scrapers in combination with Goodway flexible shafts and tube cleaning systems. Contact Goodway Benelux for the correct combinations of shafts and tools.

- Remove hard deposits and blockages
- 4 different flex hub sizes available
- Use for tube I.D. range 13 – 102 mm
- Flex hub tools are made of carbon steel
- Can be used with or without water
- Use for straight, smooth, ferrous tubes

Tube cleaning tools

Check out all the Goodway tube cleaning tools here →

