

Bone Conduction BT Headphones

User Manual

Z8

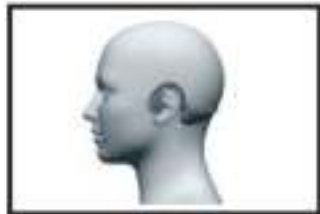
FCC ID: 2ARGR-L898ZRF

Healthy comfortable Earsfree



You can hear outside voice while listening music.
Release the ears, free enjoy.

Wearing Way



As show in the picture, hang the earphone on the back of the neck, and at the same time, the earphone should stick on the cheekbone in front of the ear rather than on the ear.

Pairing Method

- Long press the power button for 3 seconds to power on the headphones
- Please keep the BT headphones and the cellphone in the range of 1 meters if it's the first pairing
- The red and blue lights flash alternately when entering the pairing mode after BT headphones power on(if it doesn't enter pairing mode, please press the "play" button for 3 seconds until the red and blue lights flash alternately)
- Open the BT set on your cell phone or the devices with BT function. Then search the BT devices and choose pairing name " Z8 ".Enter "0000" pin code if needed.
- The blue LED flash slowly when it's paired successfully

Note:

1. When the distance between the BT headphones and the BT devices is far than 10 meters or 33 feet, the BT headphones will disconnect from the devices. After that, once they are in the range of 33 feet, they will automatically reconnect.

However, if the BT headphones with the devices disconnect more than 3 minutes, you may need to double click the "Multifunction Button" to reconnect the devices.

2. If the BT headphones is paired, long press the "Multifunction Button" for 3 seconds, the BT headphones reenter the pairing mode which other cellphone can find the BT headphones and connect it.

Charging Method



With a standard Micro USB cable(attach with the package)to connect the B T headphones and the USB port of your PC or wall charging source,the B T headphones will be charged.it takes 3 hours for full charging.When charging, the LED indicator is in RED,after finish charging, the LED indicator will turn in BLUE.

Note:

- 1.Because the battery may lose some power in the storage, here kindly suggest charging your headphones full before the first time you use it.
- 2.When charging, the headphones can not be used
- 3.If not use headphones for a long time,suggest charging ti once a month to keep battery life

LED Indicator

Red led flash quickly: low power

Keeping red led light:charging

Keeping blue led light:charging complete

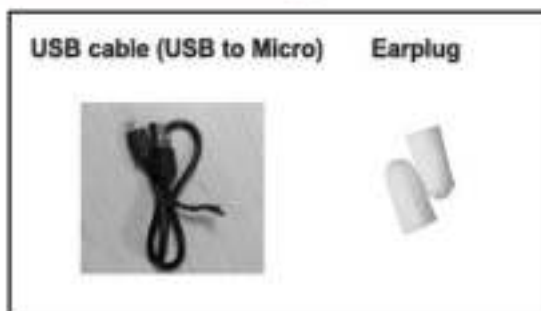
Blue led and red led flashing alternately:pairing mode

Blue led flashing slowly:connected/calling/playing music

Blue led flashing quickly: incoming call

Blue led double flashing slowly:the headphones doesn'tconnect the cellphone

Product Accessories



Specification

The speaker type: Bone conduction technology speakers

Play time: Up to 5 hours(depending on the actual volume and the sound source)

Charging time: 3 hours

Standby time: Up to 10 days

Effective range: 10 meters(33 feet)

Basic Operation

Operation	Headset button controller	Warning tone
Power on	Long press M(power) button for 3 seconds	Power on
Power off	Long press M(power) button for 3 seconds	Power off
Answer a call	Click the multifunction button	No Buzzing
End a call	Click the multifunction button	No Buzzing
Reject a call	Long press the multifunction button for 2 seconds when call incoming	No Buzzing
Volume control	Click the vol ⁺ / ⁻ button	No Buzzing
Play or pause the music play (*)	Click the multifunction button	No Buzzing
The previous/ next song(*)	Long press ⁺ / ⁻ button for 2 seconds or double click the multifunction to switch to next	No Buzzing
BT		Pired
BT disconnected		Dingdong
Enter pairing mode	Long press the play multifunction	No Buzzing
Low battery		Buzzing more times

* because of the different operation system and music player, this feature may be different

Fault diagnosis and solution

Fault	Possible reasons	BSolution
Can not power on	Check whether the battery is low	Charging it
Can not automatic connection	Check if enters standby mode	Double click on the play button to reconnect or power on once time
Can not discover BT headphones	Not enter pairing mode	Long press play button for 3 seconds

Storage & Maintenance

- Please store the BT headphones in a cool, dry place. The working temperature is 0 ~ 45 °C(32 ~ 113°F). In cold, hot or highly humid place will reduce the battery life.
- When long time storage, please charge it before using
- BT headphones resistance to water, but not waterproof, please don't put the BT headphones into water.If there is water on it, please use soft cloth to wipe clean
- Use soft dry cloth to clean BT headphones
- Do not use any sharp objects in connect with BT headphones
- Do not put BT headphones at a higher or lower temperature
- Do not charge the BT headphones in the moist environment

Product warranty

Product Name:

Product Model Number: Z8

Purchase Date: _____

Invoice Number: _____

Customer Name: _____

Customer Phone: _____

Customer Address: _____

Warranty terms

Warranty terms

1. There is a manual and warranty card in the package. User fill out the warranty card as the warranty certificate.

2. When headphones quality problems occur in normal use and not more than a year since the date of purchased, users can enjoy free repair services.

3. Which of the following does not belong to the scope of warranty:

A. Warranty card without dealer signature or seal

B. Artificial or force majeure cause damage

C. Machine to normal wear and tear

4. Such as the failure of human, more than the warranty period and irresistible reasons, we will collect repair costs

5. If the product be send back to factory for repair, please contact us, and fill the warranty cards with your name, address, telephone and fault phenomena

This device complies with part 15 of the FCC Rules.

Operation is subject to the following two conditions:

(1) This device may not cause harmful interference, and (2) this device must accept any interference received, including interference that may cause undesired operation.

Any Changes or modifications not expressly approved by the party responsible for compliance could void the user's authority to operate the equipment.

Note: This equipment has been tested and found to comply with the limits for a Class B digital device, pursuant to part 15 of the FCC Rules. These limits are designed to provide reasonable protection against harmful interference in a residential installation. This equipment generates uses and can radiate radio

frequency energy and, if not installed and used in accordance with the instructions, may cause harmful interference to radio communications. However, there is no guarantee that interference will not occur in a particular installation. If this equipment does cause harmful interference to radio or television reception, which can be determined by turning the equipment off and on, the user is encouraged to try to correct the interference by one or more of the following measures:

- Reorient or relocate the receiving antenna.
- Increase the separation between the equipment and receiver.
- Connect the equipment into an outlet on a circuit different from that to which the receiver is connected.
- Consult the dealer or an experienced radio/TV technician for help.