

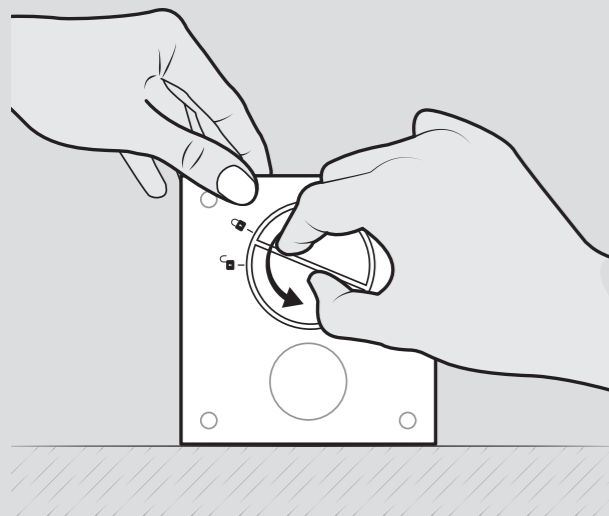
Cleaning the filter -

Do this for each new refill.

1

Remove the filter cap

Important: place the PerfectClean® on the front with a view of the start button (safety mode to avoid spilling liquid). Remove the filter knob by turning it to the left to the position

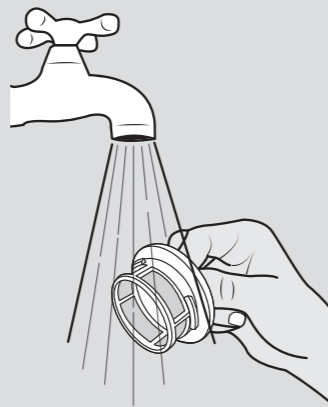


2

Clean the filter cap

Option A

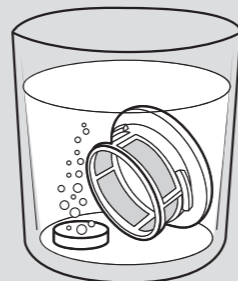
For a slightly dirty filter: clean with warm water.



After cleaning, put the filter cap back in position up to position

Option B

For a heavily soiled filter: clean with a cleaning spray (20 minutes), then rinse with warm water.



and turn to the right

Applicable guidelines

This device complies with the requirements of the electrical appliances directive, in particular the Directive 2014/35/EU.

Details of operation

Cleaning - Disinfecting (20 minutes)

The PerfectClean® cleans hearing aids thanks to an antibacterial and disinfectant solution. Earwax and impurities are completely removed thanks to the Power Vortex.

Drugs (65 minutes)

The PerfectClean® has a drying system based on warm air that is blown in by a fan. The temperature of the cleaning chamber is controlled by an electronic system that controls the temperature in the chamber below 45°C, regardless of the ambient temperature, so as not to damage the hearing aid.

UV-C disinfection (5 minutes)

The PerfectClean® is equipped with a short-wavelength UV-C lamp that purifies the hearing aids. The exposure of surfaces exposed to UV-C light ensures that more than 99% of fungi and bacteria are removed.

Safe handling

The PerfectClean® is equipped with a short-wavelength UV-C lamp that purifies the hearing aids. The exposure of surfaces exposed to UV-C light ensures that more than 99% of fungi and bacteria are removed.

Emptying (for transport or travel)

1. Place the PerfectClean® on the front (with a view of the start button).
2. Remove the filter knob by turning it counterclockwise until the
3. Place the PerfectClean® flat again, over a sink, to remove the remaining liquid.
4. Place the cap back in position and turn right to position

Maintaining optimal quality of your hearing aids is a daily task use of PerfectClean® highly recommended.

Safety measures

The PerfectClean® must be used by a person in full possession of his or her intellectual capabilities. There are no other restrictions apply to the user.

Keep out of reach of children. All interventions, except cleaning and usual maintenance the customer, must be done by the manufacturer's after-sales service or by a recognized professional. Place the PerfectClean®, the power cable or the plug in water or other liquid. Like the power cord or plug is damaged, stop using the device and replace it immediately. Replace your power adapter with one original model.

Place the PerfectClean® on a flat, dry and stable surface. **Never place your PerfectClean® upside down or tilted, even when not in operation**. Do not look directly at the UV-C lamp located in the drying chamber located. To disconnect, pull on the plug, not the cable.

Never use cleaning agents or caustic products to clean your PerfectClean®. If you do not follow these instructions follows, the warranty will be void. The manufacturer cannot be held liable for damage caused by incorrect use.

Product maintenance tips

Clean with a soft cloth. Do not use abrasives to clean the PerfectClean®. Do not spray liquid into it device. Keep PerfectClean® closed when not in use to prevent dirt build-up.

Guarantee

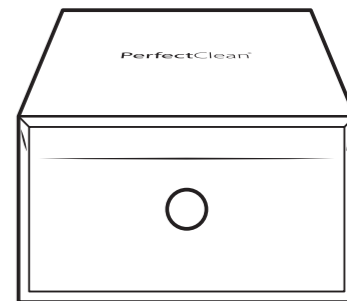
24 months - (cable and charger included). Contact our hearing care professional if your device is defective. Before a service after if you sell during the warranty period, you must be in possession of proof of purchase. This warranty does not apply to any malfunction caused by an accident or similar incident or damage, ingress of liquids, negligence, abnormal use, disassembly, lack of maintenance or other circumstances attributable to the user. Furthermore, this warranty does not apply in the event of a malfunction caused by lightning strike or a other variation in the electrical voltage. As a precaution, we recommend that you disconnect the PerfectClean® during a thunderstorm.



I care about the environment, so I unplug my power cord PerfectClean® device comes off when my hearing aids are cleaned.

Instructions for use

PerfectClean®



This set contains:

- 1 PerfectClean® - 1 USB cable

- 1 charger

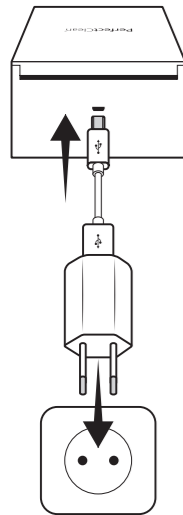
- 1 instruction manual

Optimal hearing every day

PerfectClean®

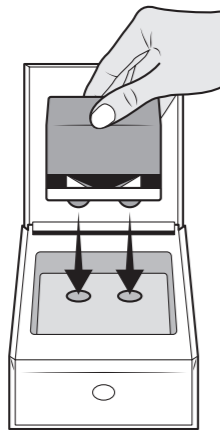
1

Connect the PerfectClean®. Its blue indicator light lights up to indicate that the device is under tension.



If no action is taken undertaken during 30 seconds, the light goes out.

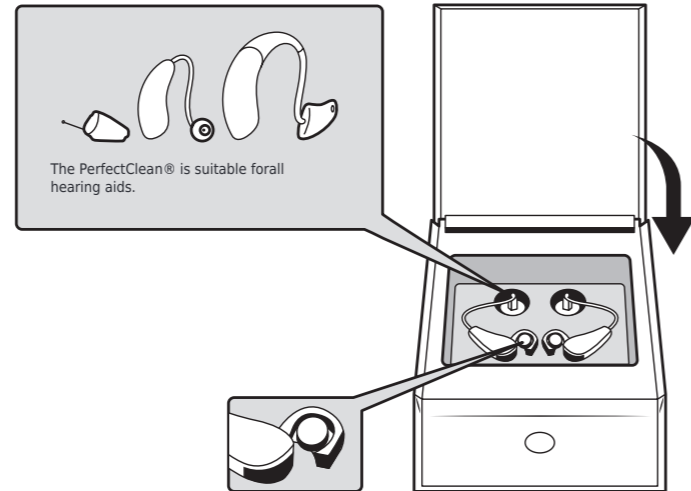
Before first use you must: Charging PerfectClean® (full charge), otherwise the cycle will start not. Consult the manual regarding charging for more information.



Make sure that the PerfectClean® standing on a flat surface, do not turn the device over.

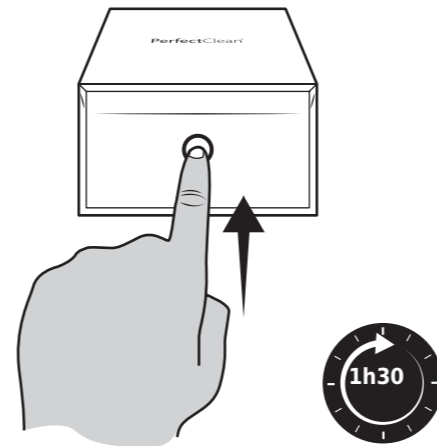
2

Open the battery compartment (you can leave the batteries in), insert the hearing aids in the box by inserting the earpieces into the provided openings lay. Close the lid.

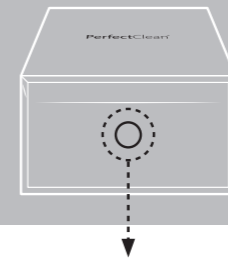


3

Press the push button once to start the cycle (a pink flashing light indicates that the request is being processed). The blue indicator light flashes slowly, this means that the device is in operation. The cycle does not start until the lid is closed. The PerfectClean® stops automatically at the end of the cleaning cycle (1h30). Its indicator light is off.



Meaning of the light signals



BLUE Slow flashing >	In operation
BLUE Fixed >	Stand-by
BLUE Fast flashing >	Replenish fluid Use new stock and empty completely

Signaling data

You will find the information on the inside of your PerfectClean®.

Used abbreviations:

- IN** Volt (Supply Voltage)
- A** Ampere (Power Consumption)
- USB power symbol
- Indoor use
- The product is made of ABS and falls under recycling code 7
- This product complies with all applicable European directives.

To delete

Dispose of old appliances in an environmentally friendly manner. Contain the old devices/recyclable materials that can be recovered. So hand in the old devices to the correct collection points.

Technical data

Functionalities

Internal dimensions (wxhxd): 71x18x87 mm
 External dimensions (wxhxd): 106x68x122 mm
 Weight (g): 400g
 uv-lamp: 253,7nm
 Max. power: 4 W
 Power in standby: 0.04 W
 Software: 00 PC-LOG-02.00
 Storage conditions from -20°C to +65°C

Number of cycles: 1
 Drying time: 45° C
 Cycle time: 90'
 Operating temperature: From 12°C to 40°C

Power supply:
 Input: 100-240Vac 50-60Hz / Output: 5Vdc
 Connectivity: USB/micro USB cable