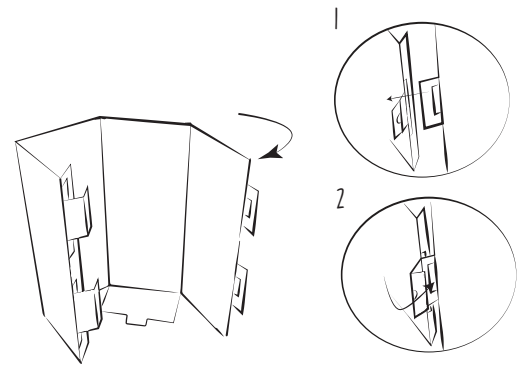
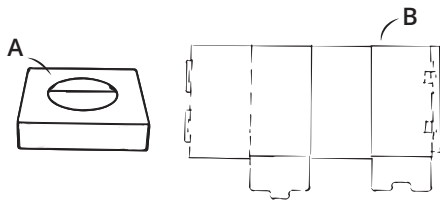
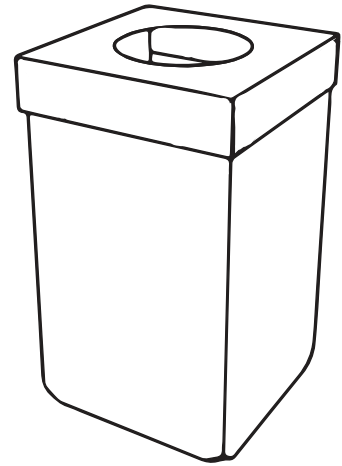


# KARBIN 240L

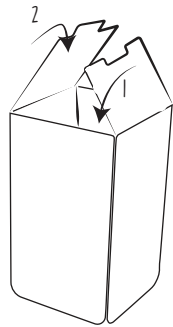
WHAT'S IN THE BOX?  
1x Lid A  
1x Bin B

**CAUTION!** Fold towards the folding lines.

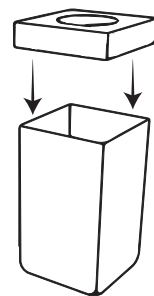


1. Check if you have all the components.

2. Fold component B in a square and attach as indicated in the images.



3. Turn the karbin around and fold the flaps inwards so they hook together.



4. Finish the karbin by placing the lid on top.