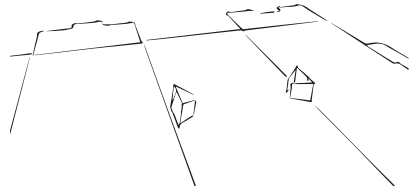
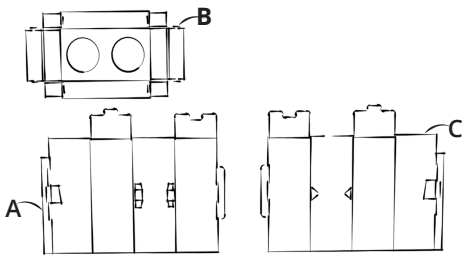


DUO BIN

WHAT'S IN THE BOX?

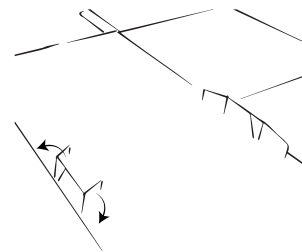
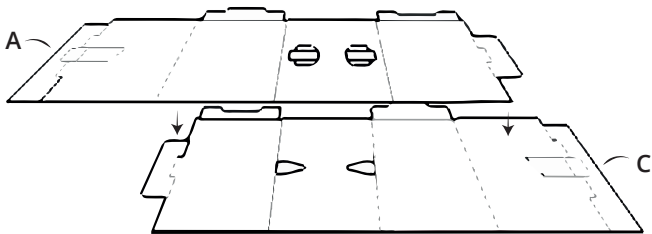
- 1x Bin A
- 1x Lid B
- 1x Bin C

Caution! Fold towards the folding lines.



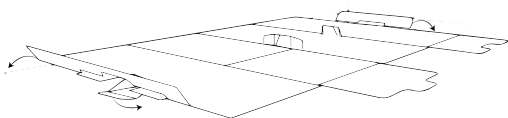
1. Check if you have all the components.

2. Fold the flaps in bin A upwards and make sure that the fold lines on the plate are not visible.

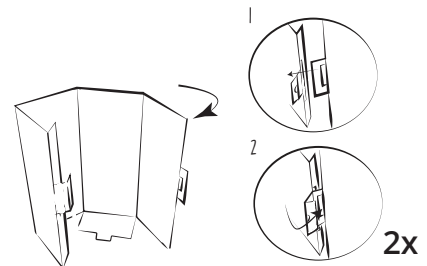


3. Secure the plates of bin A and C together by sliding the folded triangles into the triangle shaped holes. Make sure that the fold lines of plate A point upwards and those of plate C point downwards.

4. Unfold the flaps to secure the plates.

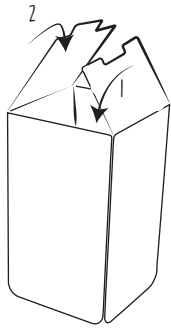


2x



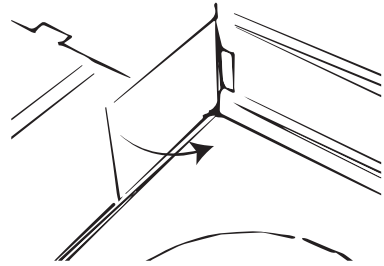
5. Fold over the flaps on the sides of the plates as indicated in the image.

6. Fold bin A and C into a square and secure as indicated in the image.



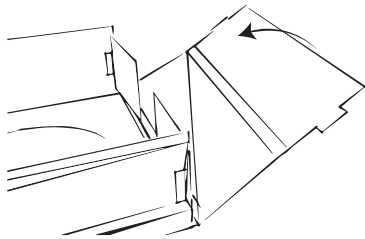
2x

7. Turn over the bin and fold the flaps inwards so that they hook together..



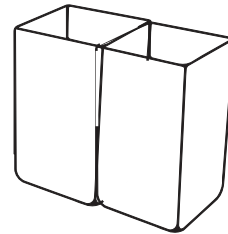
4x

8. Now take lid B and fold the short flaps inwards as shown.

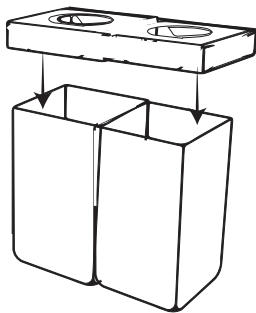


2x

9. Now fold the large flaps over the small flaps and slide the connecting parts of the flaps into the holes on the side of the lid as indicated in the image.



10. Now put a garbage bag in the bin.



11. Use a marker to write down what garbage belongs in the bin and finish the Duo bin by placing the lid on the bin.