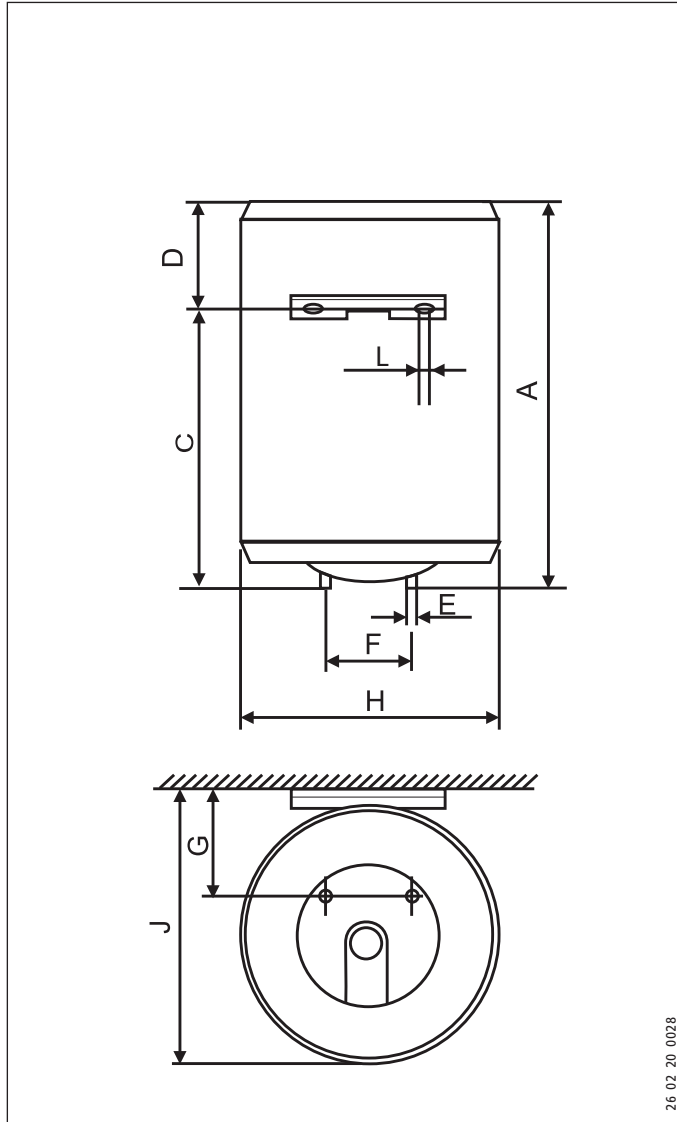


15. Specification

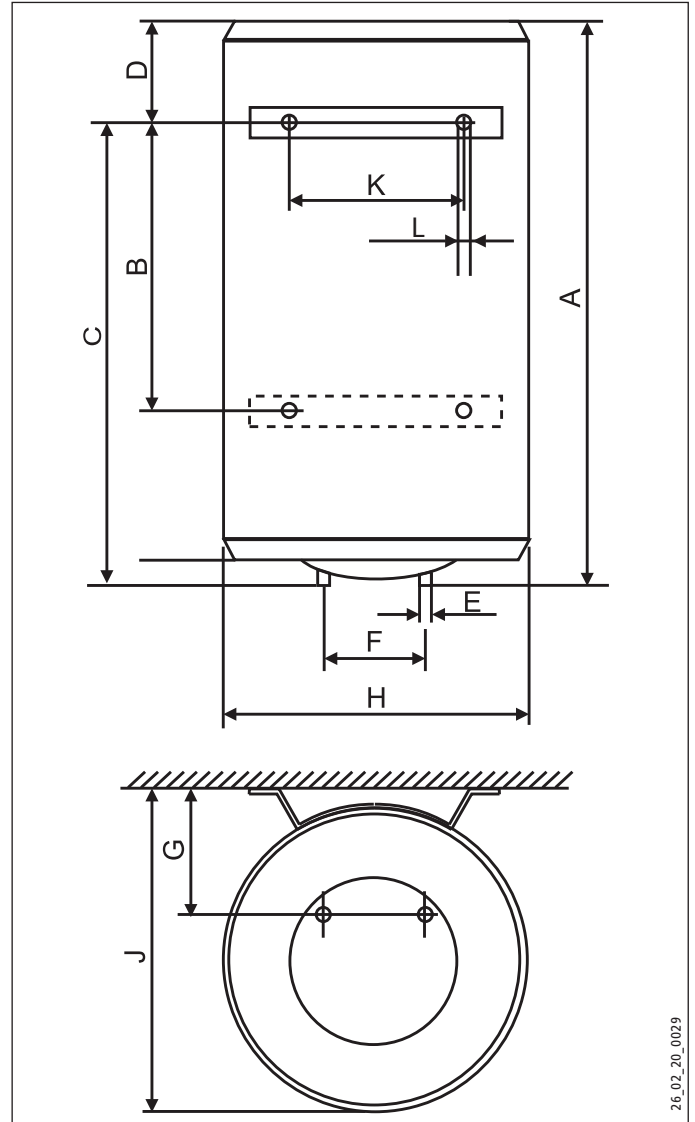
15.1 Diagram with dimensions

PSH 30-50 SI:



26_02_20_0028

PSH 80-150 SI:



26_02_20_0029

Dimensions		PSH 30 Si	PSH 50 Si	PSH 80 Si	PSH 100 Si	PSH 120 Si	PSH 150 Si
A	mm	623	918	737	908	1046	1241
B	mm					498	798
C	mm	463	750	570	748	748	1048
D	mm	160	168	120	113	251	146
E		1/2"	1/2"	3/4"	3/4"	3/4"	3/4"
F	mm	100	100	230	230	230	230
G	mm	81	81	165	165	165	165
H	mm	338	338	505	505	505	505
J	mm	345	345	520	520	520	520
K	mm	184	184	440	440	440	440
L	mm	8	8	8	8	8	8

INSTALLATION SPECIFICATION

15.2 Specification

Model		Wall mounted DHW cylinder					
Type		PSH 30 Si	PSH 50 Si	PSH 80 Si	PSH 100 Si	PSH 120 Si	PSH 150 Si
Part no.		074478	074479	074480	074481	074482	074483
Voltage		~ 230 V					
Power rating	W	2000	2000	2200	2200	2200	2200
Rated capacity	l	30	50	80	100	120	150
Adjustable temperature range	°C	5 - 65	5 - 65	5 - 62	5 - 62	5 - 62	5 - 62
Standby power consumption (65 °C)	kWh/d	0.76	1.13	1.05	1.25	1.35	1.65
Heat-up time ¹⁾	min	57	96	130	175	210	270
Permissible operating pressure	MPa	0.6					
Protection level		IP 25					
Test symbols		see type plate					
Dimensions and weights							
Weight (dry)	kg	14	17	26	31	34	40
Height	mm	623	918	737	908	1046	1241
Width	mm	338	338	505	505	505	505
Depth	mm	345	345	520	520	520	520

¹⁾ Cold water inlet temperature 15 °C and cylinder temperature 65 °C