

## **User Manual Byzoo Foldable Dehydrator Scorpion**

- Introduction
- Important Safeguards
- Before first use
- Product components and Display functions
- Assembly
- How to use
- Cleaning
- Product specifications

### **INTRODUCTION**

Thank you for purchasing the Byzoo Dehydrator Scorpion. It is very important to read this manual before use and to follow all instructions to prevent damage to the machine and to prevent injury.

### **IMPORTANT SAFEGUARDS**

Basic safety precautions should always be followed when using electrical appliances, including the following:

1. Read all instructions carefully before first use.
2. Do not touch hot surfaces. Use the handles or knobs.
3. Use the dehydrator only on a level, dry and heat-resistant surface in a well-ventilated area.
4. To prevent fire, electric shock and injury, do not immerse cord, plug or the appliance in water or any other liquid.
5. If the device is used in the vicinity of children or others with limited motor skills or limited capacities, strict supervision is necessary.
6. Always remove the plug from the socket after use. Always unplug the appliance when it is not in use, before it is assembled or when it's cleaned. Let the appliance cool down before (dis) assembly and cleaning.
7. Never use the appliance if the cord or plug is damaged or if the appliance does not function properly, has fallen or is damaged in any way.
8. Never make any changes to the device yourself. Do not attempt to disassemble or repair the device yourself. Not only does this invalidate the warranty, it can also cause fire, electric shock or injury.
9. Do not use the dehydrator outdoors.
10. Make sure that the appliance is not on the edge of the counter or table to prevent it falling off. The power cord should not touch hot surfaces or hang over the edge of the table or counter.
11. Do not place the appliance near heat sources such as hot gas, electric burners or heated ovens.

12. Do not use the appliance for other than its intended use.
13. Never clean the components of the dehydrator with scouring pads or other abrasives. Pieces can come off and then enter the electrical part of the dehydrator. This can cause damage or electric shock. Abrasives can damage the finish of the dehydrator.
14. Turn the machine off completely before unplugging it. Remove the plug from the socket only directly on the plug and not by pulling on the cord. Make sure that the plug is removed from the socket before the machine is disassembled.
15. Do not wrap or tie cord around the appliance, even when it has been disassembled to prevent damage to the cord.
16. Store the machine in a cool, dry place.
17. Do not move the dehydrator when in use.
18. Make sure all parts are assembled before turning on the dehydrator. Do not disassemble when in use.
19. Do not use the machine if one of more parts are missing or damaged.
20. Do not clean the parts in the dishwasher or with hot water and never place the parts in the microwave. This can cause parts to warp or deform.
21. The dehydrator should be operated on a separate electrical circuit from other operating appliances. If the electrical circuit is overloaded with other appliances, the appliance may not operate properly.

#### SAVE THESE INSTRUCTIONS

- This appliance is for household use only. Please follow the instructions in the manual carefully.

The appliance cannot be covered under the manufacturer's warranty if the product is used in a way not intended or commercially.

- Save this instruction manual for future reference.
- If the appliance is given as a gift, please include this manual.

## **BEFORE FIRST USE**

1. Read all instructions and important safeguards first.
2. Remove all packaging materials and check if all parts are present and undamaged.
3. Keep the packaging materials away from children.
4. Wipe the surface with a wet cloth. Do not wash the fan or heating element at the back of the unit.
5. After cleaning the machine first needs to be assembled and then operate for 30 minutes without any food in the dehydrator. Any smoke or smells produced during this time frame are normal. Please ensure sufficient ventilation of the room and make sure there is at least 3 cm clearance on all sides of the dehydrator.
6. Do not operate the dehydrator for more than 20 hours in one single use. After the dehydration process is completed you turn the power off and unplug the unit. The dehydrator needs to cool off at least 2 hours before operating it again.

## PARTS



1. Panel – lower base
2. Left panel
3. Right panel
4. Base with digital Control Panel
5. Brackets left panel
6. Brackets right panel
7. Top panel
8. Front cover

### Display functions

Power (⏻) – turns the dehydrator on and off

Temperature – By pressing on the arrows, you can adjust the preset temperature from 35° en 68°C.

Timer – By pressing on the arrows you can adjust the desired time. The timer counts down the time left for dehydrating.

## ASSEMBLY

### Step 1:



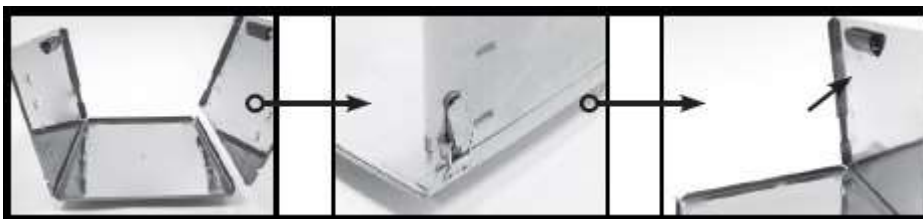
Place the lower base panel #1 on a stable, flat surface.

### Step 2:



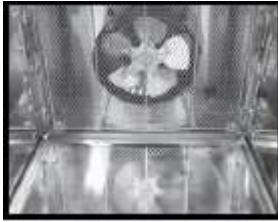
Insert the left panel #2 onto the left groove of base panel #1. Hook the bottom latches properly. Ensure plastic handle is positioned at the top.

### Step 3:



Insert the right panel #1 onto the right groove of base panel #1. Hook the bottom latches properly. Ensure plastic handle is positioned at the top.

**Step 4:**



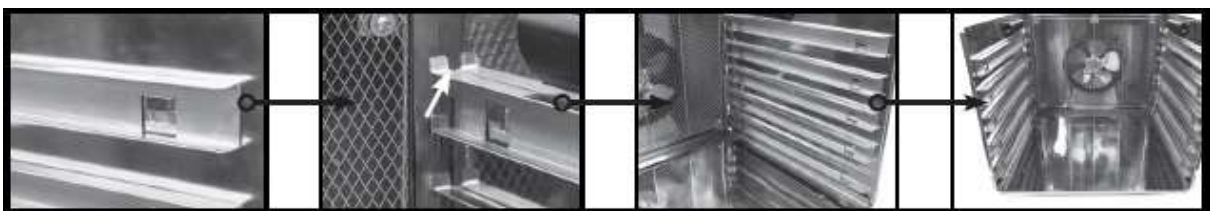
Place the dehydrator base with digital control panel #4 on the rear side between the left and right panels #2 en #3. Ensure the fan is on the inside of the dehydrator and there is no space between the panels. Latch the panels #2 and #3 on to the base with digital control panel #4. (4 latches in total)

**Step 5:**



Insert each bracket #5 (5 pieces) onto the notches of the left panel #2 ensuring brackets are set evenly on the panel. The stopping tabs on one side of the brackets stop the trays. This side of the bracket must be placed closest to the dehydrator base with control panel #4, not on the front side.

**Step 6:**



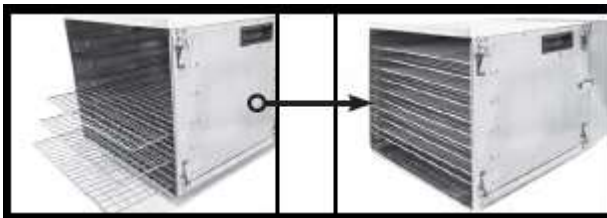
Insert each bracket #6 (5 pieces) onto the notches of the left panel #3 ensuring brackets are set evenly on the panel as on the left panel #2. The stopping tabs on one side of the brackets stop the trays. This side of the bracket must be placed closest to the dehydrator base with control panel #4, not on the front side.

**Step 7:**



Insert the top panel #7 on top of the edges of the left panel #2 and right panel #3. Ensure the lip of the panel is facing the front of the dehydrator, facing opposite of the control panel. Secure all remaining latches on both panel #2 and #3.

**Step 8:**



Slide stainless steel trays in the dehydration.

**Step 9:**



Hang the front cover (door) #8 over the lip of panel #7. The plastic handle is positioned at the bottom. Slightly push the door (panel #\*) at the bottom to securely close the cover.

**Step 10:**



Insert the power cord.

To disassemble you need to follow these assembly steps in reverse order.



## HOW TO USE

1. Place the prepared ingredients on the drying trays. Make sure the trays are not overloaded and there is enough space between the ingredients so that they do not overlap.
2. Slide the loaded trays into the dehydrator.
3. Slide on the front panel (door) #8 with the handle positioned at the bottom.
4. Make sure there is least 3 cm space on all sides of the dehydrator for ventilation.
5. Put the plug into the socket.
6. Press the Power button and the digital display will show: 00:00.
7. Adjust the temperature by pressing the arrows below Temperature Setting until you selected the preferred temperature on the display.
8. Set the time by pressing the arrows below Timer until you selected the preferred time between 5 and 15 hours.
9. Your dehydrator is now operating. Check the status of the food regularly.
10. When the timer reached "End", the dehydrator will beep several times and shut off automatically. You need to unplug the machine.
11. Allow the dehydrated results to cool off before you enjoy them!

## **CLEANING**

1. Clean the front cover (door) and drying trays in warm water with detergent.
2. Use a soft brush to remove sticky food from the drying trays.
3. Wipe the surface of the body with a wet cloth.
4. The fan and heating element cannot be washed.
5. Dry off all the parts thoroughly.
6. The parts are not dishwasher safe.
7. Do not use abrasive sponges, abrasives or other abrasive cleaning detergents to clean the parts of the dehydrator.
8. Ensure that the base of the dehydrator with digital display, the fan and heating element, the cord and the plug are not immersed in water or other liquids.

## PRODUCT SPECIFICATIONS

Brand	Byzoo
Model	Scorpion
Description	Foldable Dehydrator
Material	Stainless Steel
Display	Digital with touchpad
Power	120 V – 60 Hz – 1000W
Temperature	Adjustable between 35°C and 70°C
Drying Space	1,5 m <sup>2</sup>
Trays	10 Stainless Steel
Tray capacity	Max. 1 kg per tray