



BOBBINHOOD SUIT PATTERN HACK



MAXI DRESS

BOBBINHOOD

**BOBBINHOOD
PRESENTS
THE ULTIMATE
PATTERN HACK**

**3, 2, 1...
HERE
WE GO!**

Ever since I studied fashion design I have a big love for hacking patterns. So hacking my own pattern and sharing it with y'all is double fun!!!

It might seem overwhelming to hack and adjust a pattern or even transform it into something else. I promise though that once you get the hang of it is so much fun and it broadens your sewing horizon!

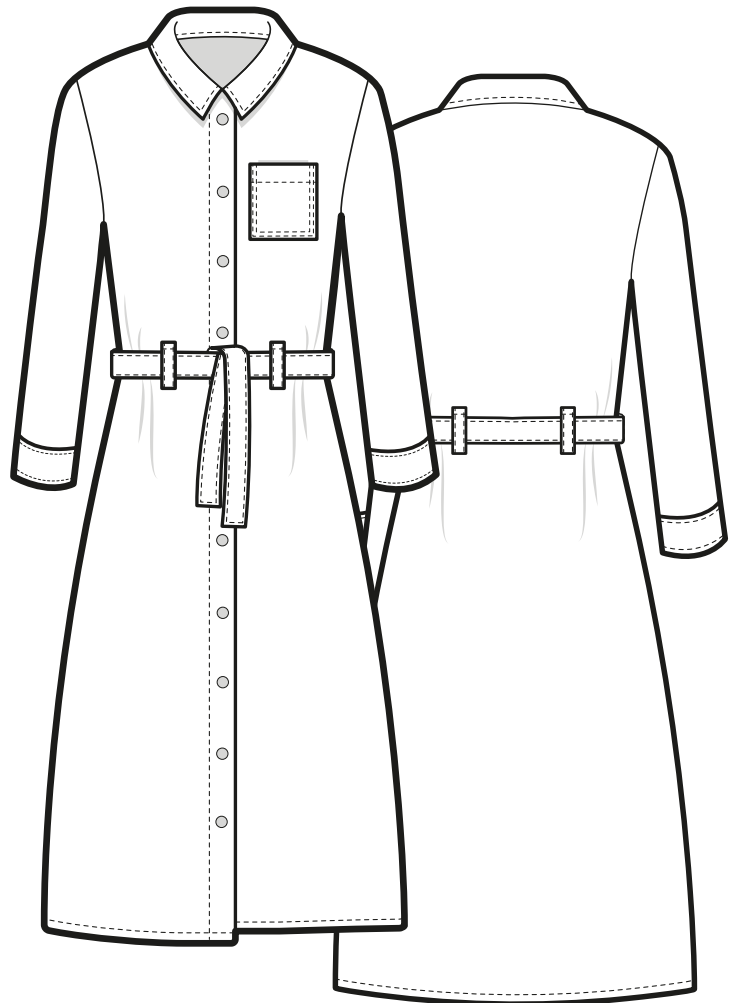
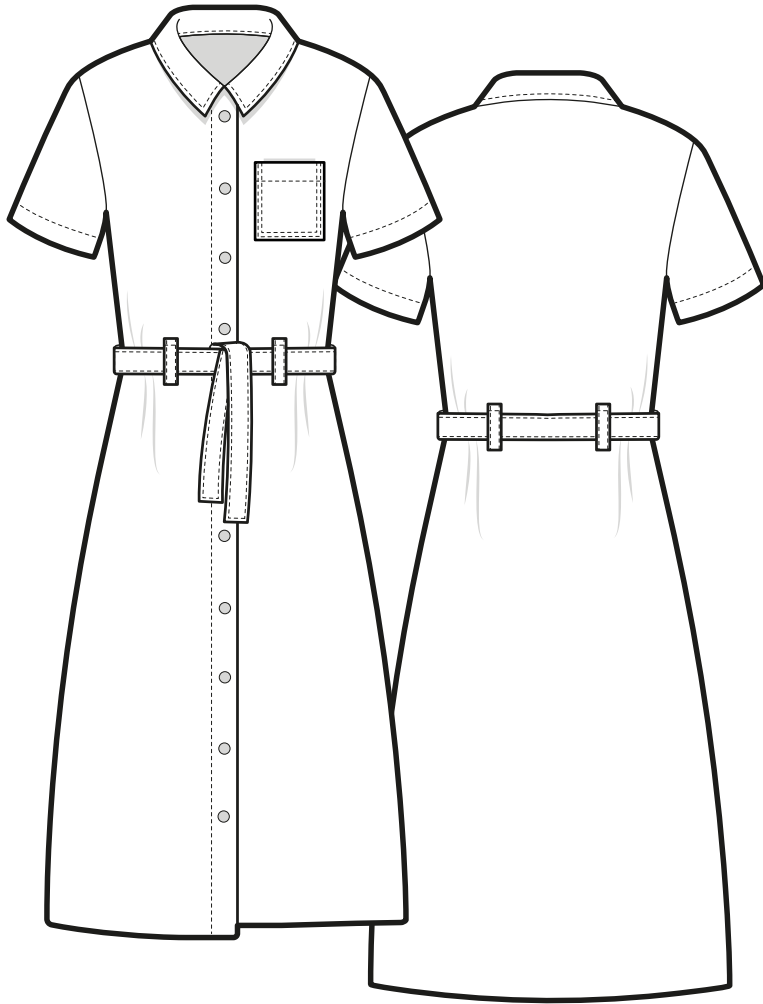
For this maxi dress you can make the top part exactly as you made it for the original Bobbinhood suit (if you don't have it yet you can find it the pattern in our webshop www.bobbinhood.com/shop). Simply choose long or short sleeves. For the skirt part you have to draw your pattern yourself. No worries, I will take you through the entire process step by step from measuring to the last stitch! Have fun!

XO Barbara aka Bobbinhood



SKETCH AWAY

Here you can sketch away and contemplate what print you'd like on your maxidress! Make a cool back print, a small print on the front or go wild with an all over. Everything goes!





MEASUREMENTS

size chart

CM INCH	XS	S	M	L	XL	XXL	3XL	4XL	5XL
BUSTE	80,0 31 1/2	86,0 33 7/8	92,0 36 1/8	98,0 38 1/2	104,0 41	110,0 43 1/4	116,0 45 1/2	122,0 48	128,0 50 2/5
WAIST	64,0 25 1/5	70,0 27 1/2	76,0 30	82,0 32 1/4	88,0 34 5/8	94,0 37	100,0 39 3/8	106,0 41 3/4	112,0 44
HIP	88,0 34 2/3	94,0 37	100,0 39 3/8	106,0 41 3/4	112,0 44	118,0 46 1/2	124,0 48 7/8	130,0 51 1/8	136,0 53 1/2
BODY LENGTH	168,0 5ft 6	169,0 5ft 6	170,0 5ft 6	171,0 5ft 7	172,0 5ft 7	173,0 5 ft 8	174,0 5ft 8	175,0 5ft 8	176,0 5ft 9

finished garment

CM INCH	XS	S	M	L	XL	XXL	3XL	4XL	5XL
BUSTE	86,0 33 7/8	92,0 36 1/8	98,0 38 1/2	104,0 41	110,0 43 1/4	116,0 45 1/2	122,0 48	128,0 50 2/5	134,0 52 3/4
WAIST	87,0 34 1/3	93,0 36 5/8	99,0 39	105,0 41 1/3	111,0 43 3/4	117,0 46	123,0 48 3/8	129,0 50 7/8	135,0 53
HIP	91,0 35 7/8	97,0 38 1/5	103,0 40 5/8	109,0 42 7/8	115,0 45 1/4	121,0 47 5/8	127,0 50	133,0 52 3/8	139,0 54 3/4
LENGTH TOP front from hsp	49,5 19 1/2	50,0 19 3/4	50,5 19 7/8	51,0 20 1/8	51,5 20 1/3	52,0 20 1/2	52,5 20 3/4	53,0 20 7/8	53,5 21
LENGTH SKIRT side seam	85,0 33 1/2	85,0 33 1/2	85,0 33 1/2	85,0 33 1/2	85,0 33 1/2	85,0 33 1/2	85,0 33 1/2	85,0 33 1/2	85,0 33 1/2



This is for a maxi dress, you can ofcourse choose your own length.
We'll tell you all about it later on in this manual!



1st THINGS 1st

- 1** This pattern is **WITHOUT** seam allowance. We like to add 1 cm - 3/8" but please add what you are you used to. Add this allowance to all seams.
- 2** You will need the Bobbinhood suit pattern and manual as well as this hack manual to be able to make this maxidress.
- 3** Pre wash your fabric and iron before cutting. No fun at all if you ask me but veeeery important ;)
- 4** Have fun! This manual is just a guideline, please feel free to do whatever you feel like.

fabric requirements

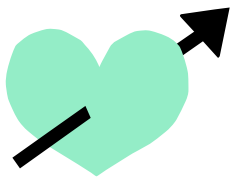
For this hack we recommend a fabric with a bit of body. Medium, or even heavy denim, sturdy linnen, twill, (fuax) leather etc etc.

CM <i>yards</i>	XS - XL	XXL - 5XL
MAIN FABRIC	200,0 <i>2 1/8</i>	320,0 <i>3 1/2</i>
LINING	25,0 <i>1/4</i>	25,0 <i>1/4</i>

supplies

- fusable interfacing
- 11 (snap)buttons
- thread

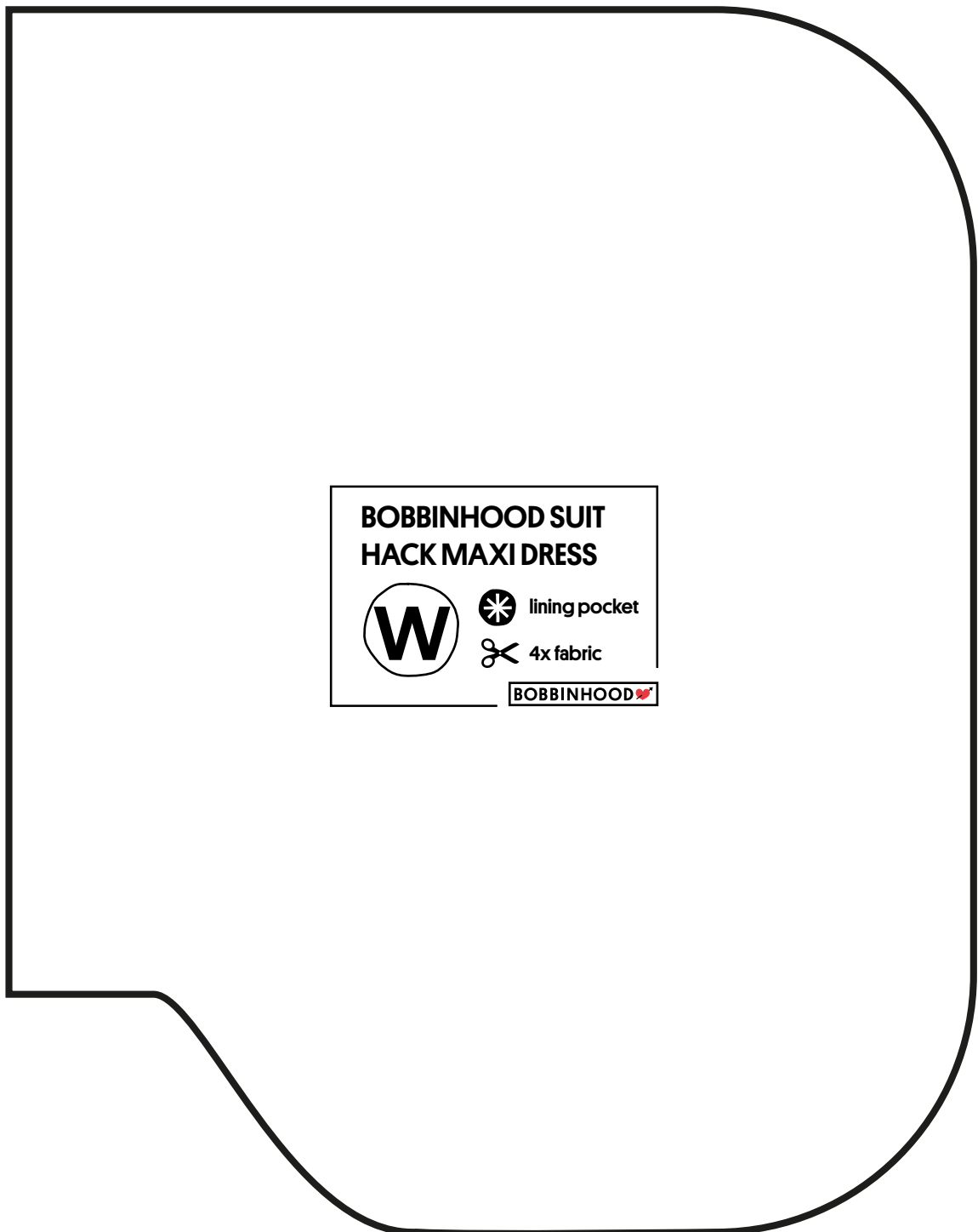
FOR LONG SLEEVES ADD 40 CM/ HALF A YARD OF FABRIC.



EXTRA PATTERNS

Print this page at 100%. Do not scale!!!

Cut this pattern 4x out of lining fabric, remember the pattern has no seam allowance.



**BOBBINHOOD SUIT
HACK MAXI DRESS**



lining pocket



4x fabric

BOBBINHOOD 



HACK PATTERNS

1

The top part of the maxi skirt is exactly the same as the Bobbinhood suit. So all you have to do is choose if you want a short or long sleeve.

2

For the bottom part you'll have to draw the pattern yourself. It is not hard at all, we'll help you out!

First decide on the length of the skirt.

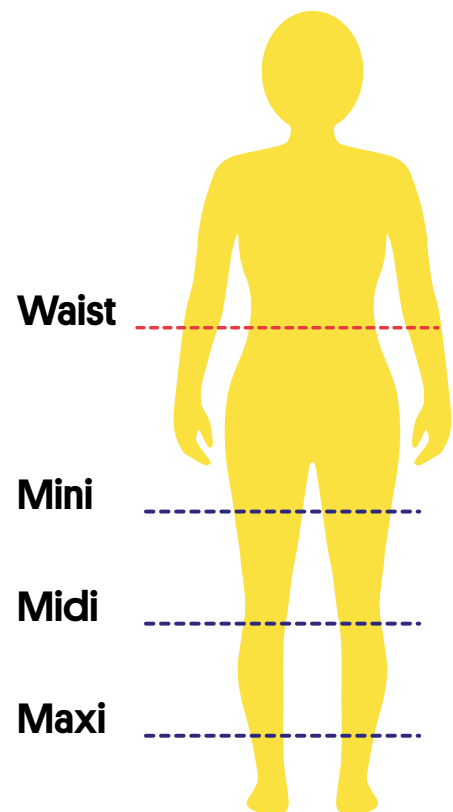
For this hack the skirt part is 85cm-33½" in length.

You can ofcourse make your personal desired length as follows:

Grab a ribbon or something similar and tie it around the smallest part of your waist.

Measure down from the waist to where you want the skirt part to end.

Make this the length of the skirt patterns.

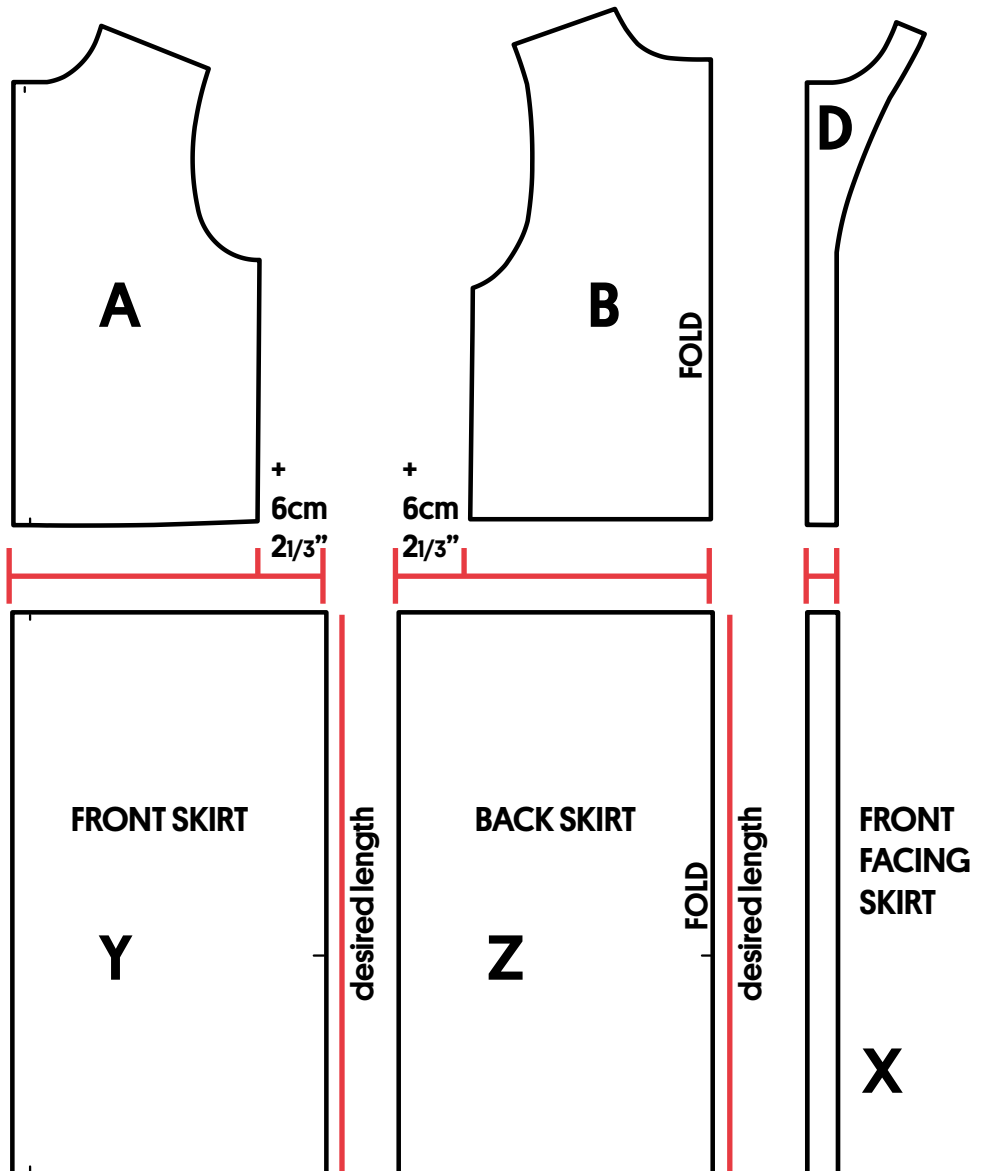




HACK PATTERNS

3

PATTERNS A+B+D
FROM THE ORIGINAL
BOBBINHOOD SUIT
PATTERN



PATTERNS YOU HAVE TO
MAKE (NO WORRIES:
EASY PEASY) FOR THIS
HACK



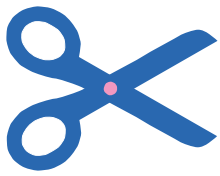
Measure the lower seam of both the front pattern and back pattern and add a minimum of 6 cm-2 $\frac{1}{3}$ " to the side seam for ease. Add more for a more ruffled skirt part!



Make the pattern as long as you want, we made ours 85cm-33 $\frac{1}{2}$ ". Draw a notch where you want the slit to begin. We made ours at 40 cm from the bottom.



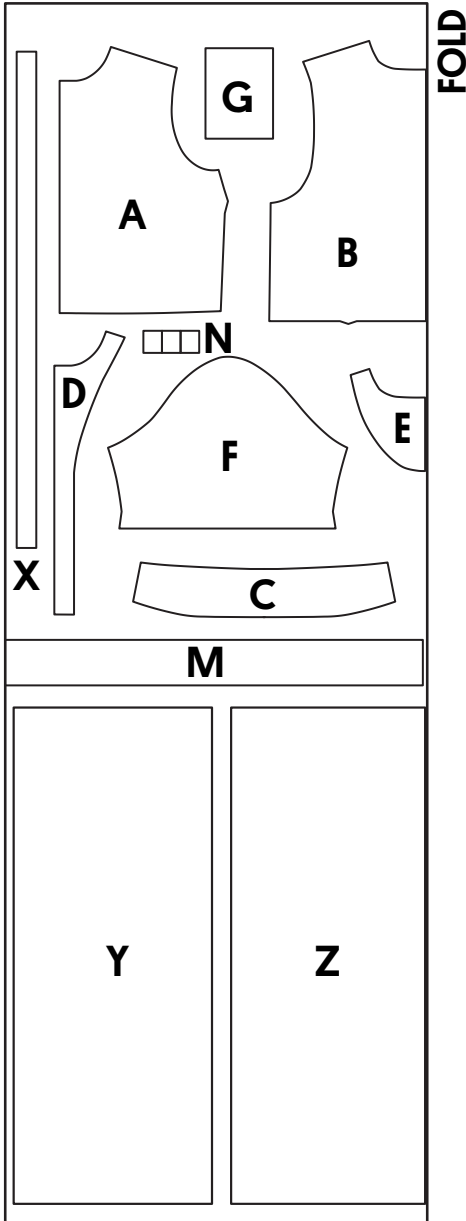
Make the front facing pattern by using the same width as the top facing (pattern D) and length as your self drafted skirt patterns.



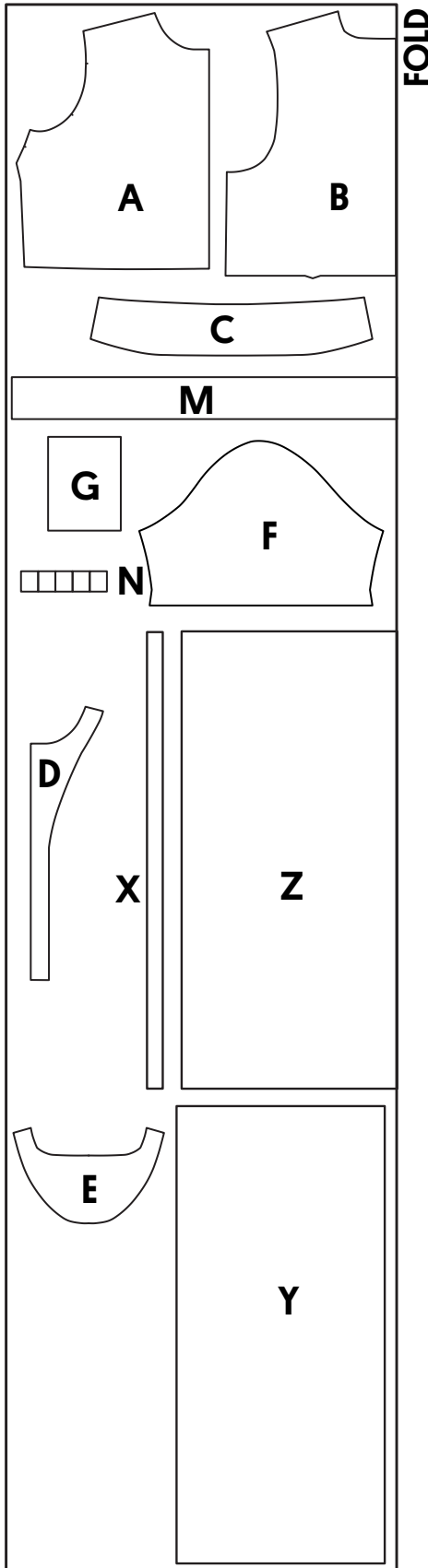
CUT

Fabric width 150cm - 60"

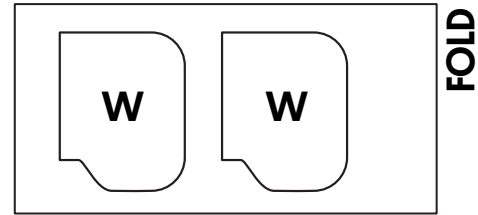
XS-XL



XXL-5XL



LINING XS-5XL



A. Front top
2x fabric

B. Back top
1x fabric, fold

C. Collar
2x fabric, 1x fusing

D. Facing front
2x fabric, 2x facing

E. Facing back
1x fabric, fold

F. Sleeve
2x fabric

G. Front top pocket
1 or 2x fabric

N. Beltoops
5x fabric

W. Lining pocket
4x lining

X. Facing skirt
2x fabric, 2x fusing

Y. Front skirt
2x fabric

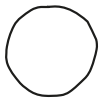
Z. Back skirt
1x fabric, fold

TIP: If you made the Bobbinhood suit before and you know what top size is best for you. Make this first then add a muslin skirt to see if the width you choose for the pattern is right.



WORK FLOW

Here at Bobbinhood we have a thing for creative workflow charts. For every project we do we make a clear list of steps and whenever we worked on a step we grab our markers and color the indicators. It's so fun we decided to make you one for this project as well!



Measure yourself



Print new pockets and straps



Hack the pattern.



Make a muslin (or not if your like to wing it :))



Cut everything



Fuse



Make top



Make skirt



Add beltoops and attach top and skirt



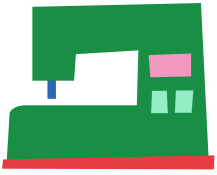
Attach buttons



Confetti! Celebrate! Wohooooooo!

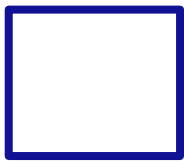


Share what you made #WEAREBOBBINHOOD



LET'S GO

For this hack you'll need your Bobbinhood manual at hand as well and you will switch back and forth. You will only need the TOP PART section that starts on page 11. We will talk you through the entire hack. No worries!



RIGHT SIDE



WRONG SIDE



Seam that has to be stitched in that step



Seam that has to be finished



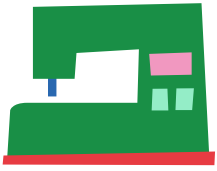
Follow step **1** and **2** of the Bobbinhood suit manual.
Stitch the darts in the top back.



Follow step **3** to **20** for short sleeves or to **36** for long sleeves, of the original Bobbinhood suit manual (available in our webshop).



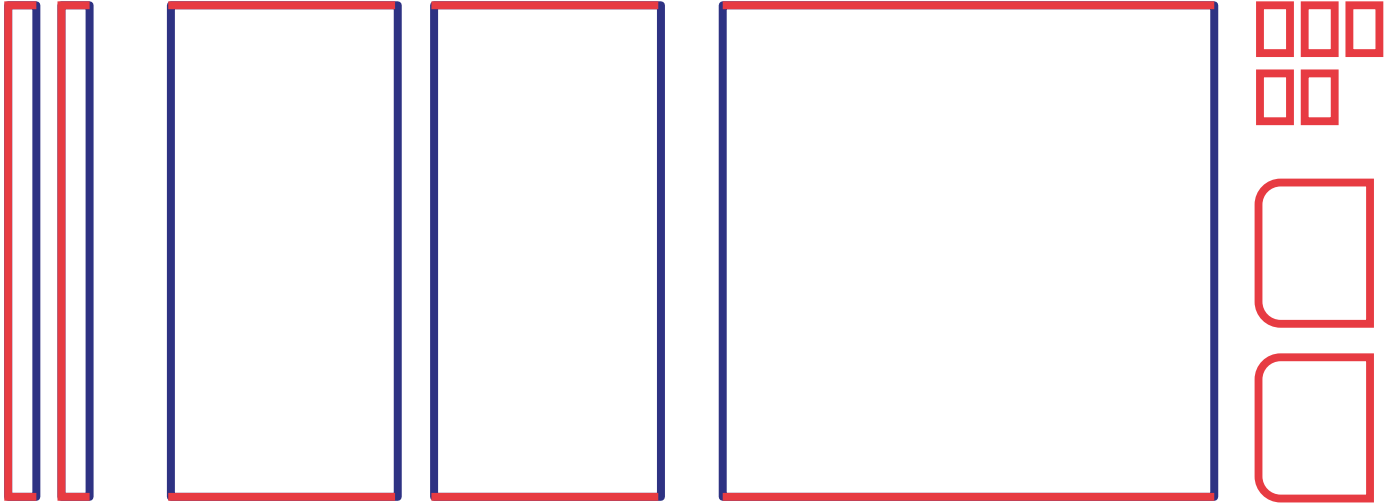
When you have the top all finished. Do a quick fit. Happy?
Continue with making the skirt.



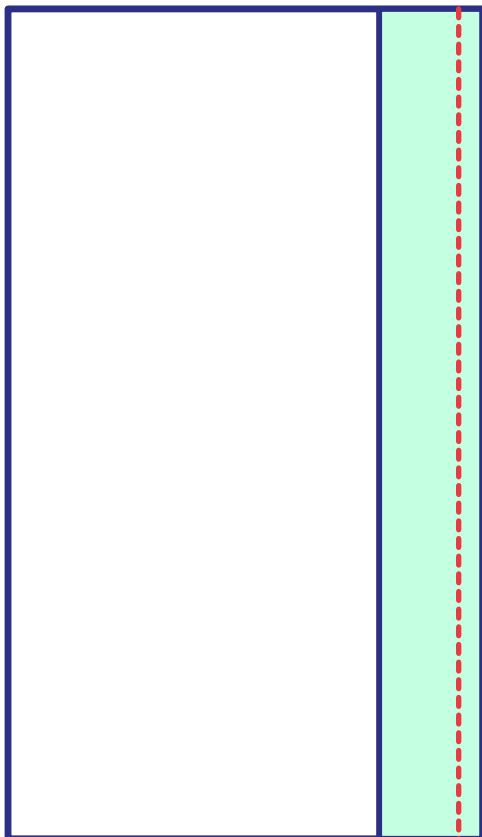
BOTTOM PART



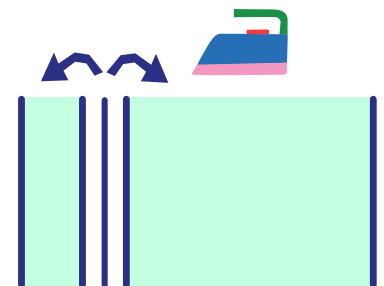
Finish all the seams that are indicated red.



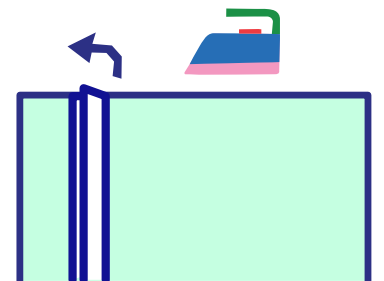
Stitch facing to both fronts.



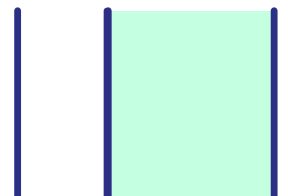
Press seam open



towards facing



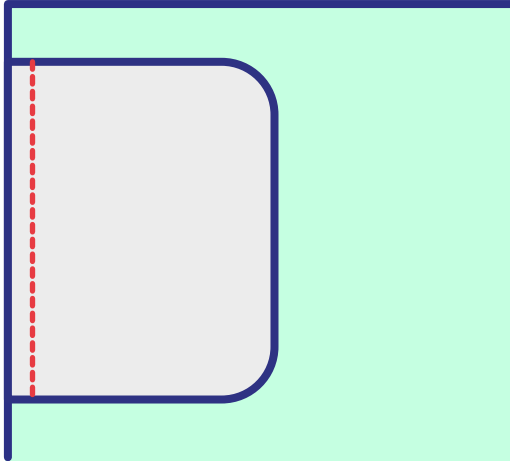
press the facing
entirely to the back





Position pocket about 2,5cm-1" from top seam. Stitch pocket at 0,5cm-1/5" from edge to the side seam.

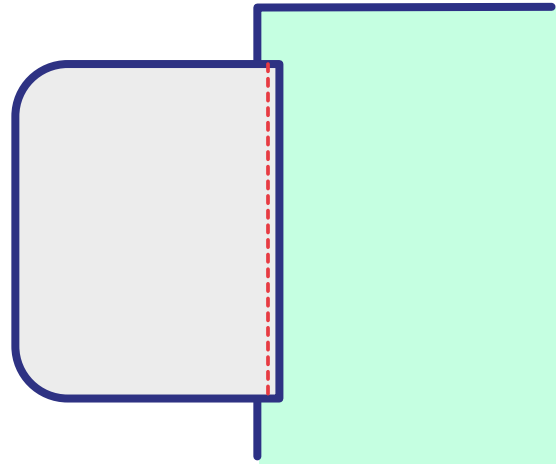
Do this 4x: both front pattern pieces and both sides of the back.



Overlock side seams.



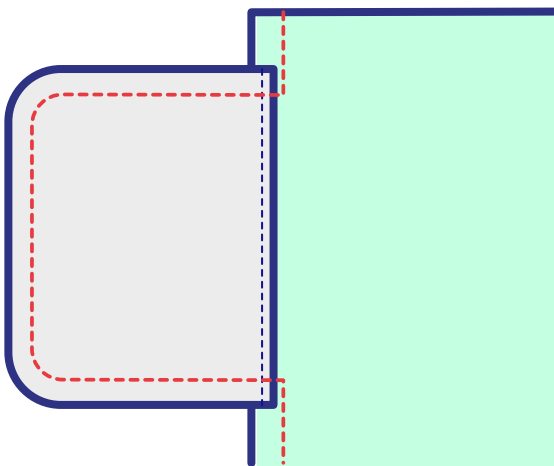
Press the pocket lining to the outside.
Top stitch.



Do this for all 4 pocket linings, on both front and back patterns.



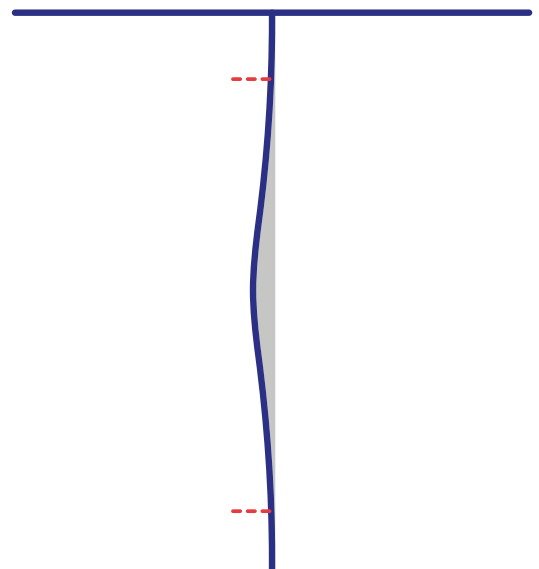
Place front and back on top of each other, good sides together. Align pocket, pin and stitch. As indicated at 1cm-3/8".



Continue stitching and close the side seam. Stop 1cm-3/8" after the notch for the slit.



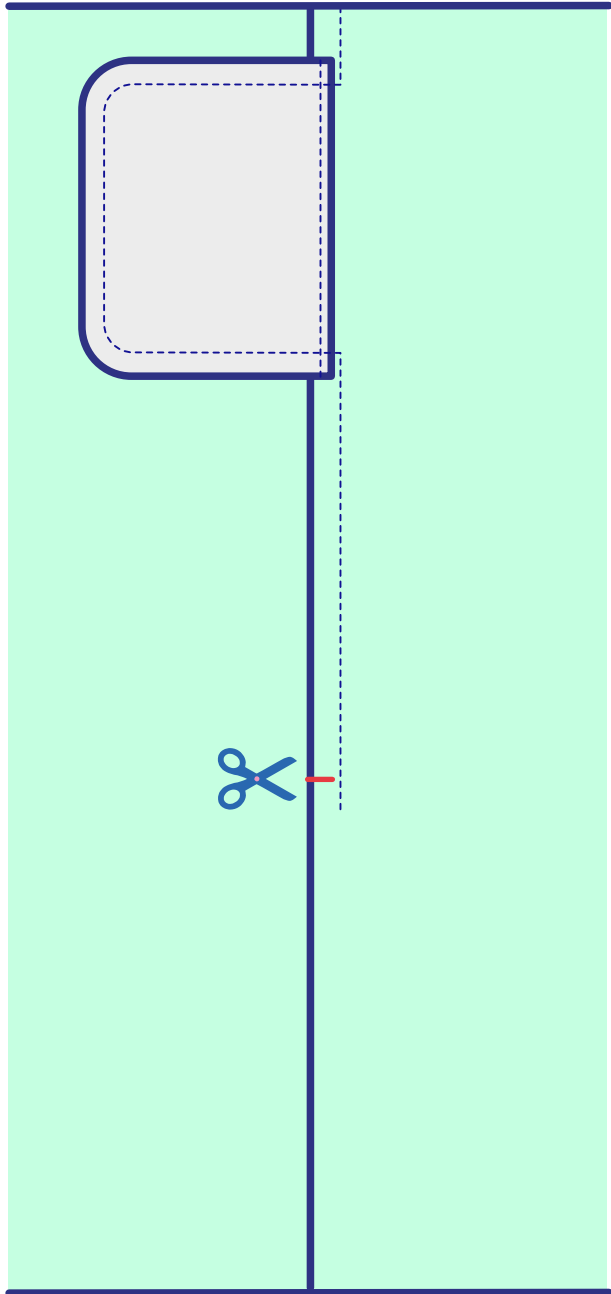
Press the pocket to the front. Turn to the good side and press the pocket opening nice and sharp.



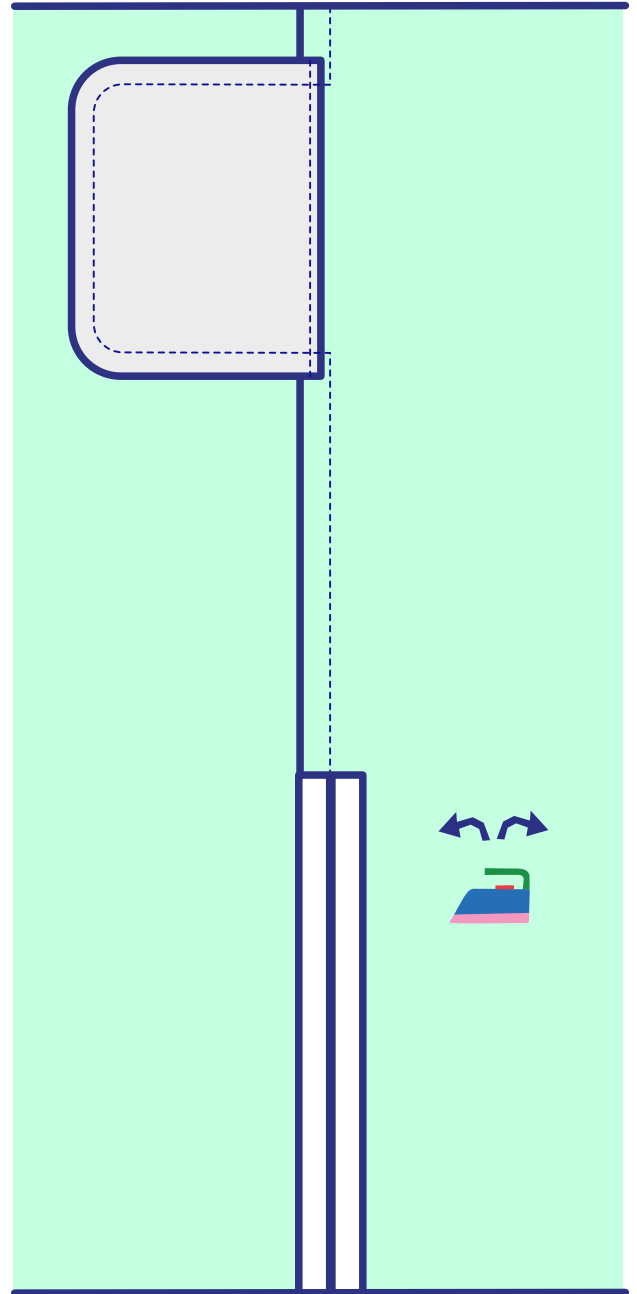
Stay stitch just above and under the opening in the side seam for extra strength.



Cut in your seam allowance,
on the notch, just a bit less
than 1cm-3/8".
Make sure you don't cut in
your stitch line!

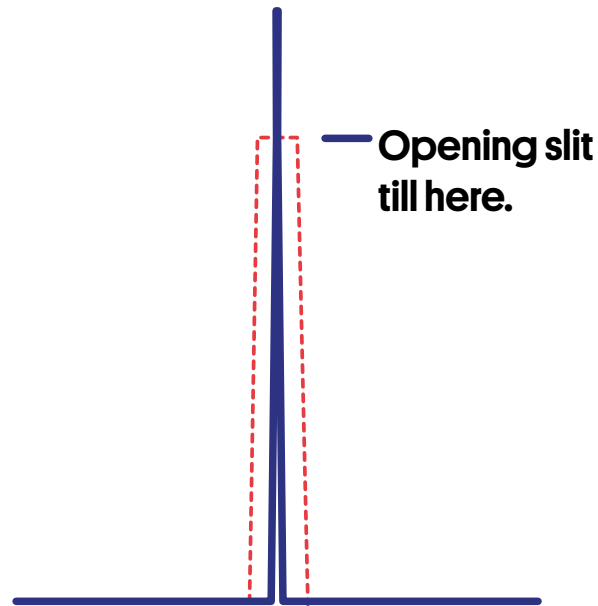


Press the side seam above
this cut to the front.
Under the cut press both
seams at 1cm-3/8".

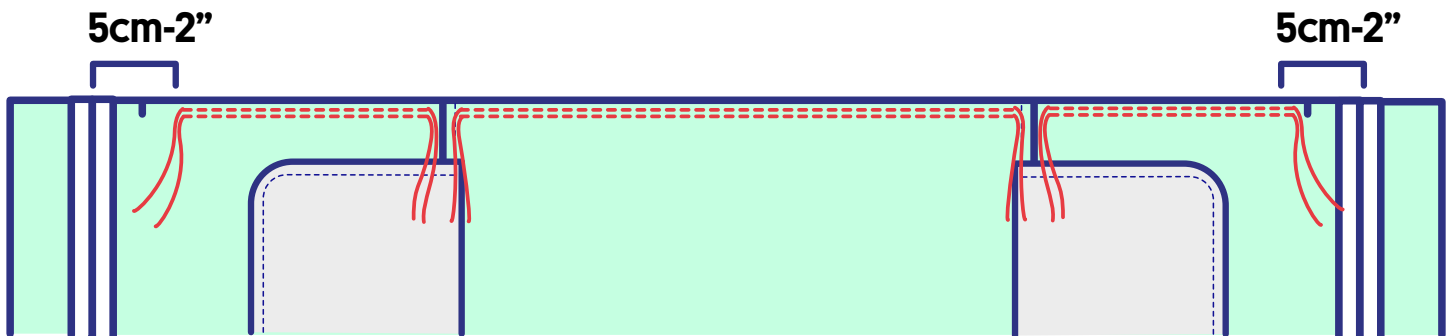




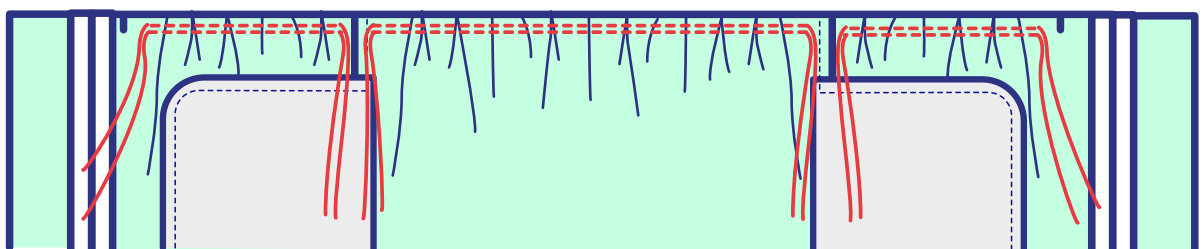
Top stitch the slits as indicated at 0,5cm-1/5".



Time to attach the skirt to the top! First make sure they fit together: inside the topseam allowance of the skirt, stitch two long rows of basting stitches. Leave long threads at the ends.



Gently pull on the threads to gather your fabric. Gather both front parts and the back part to fit with your top. When all is good secure the threads with a knot.

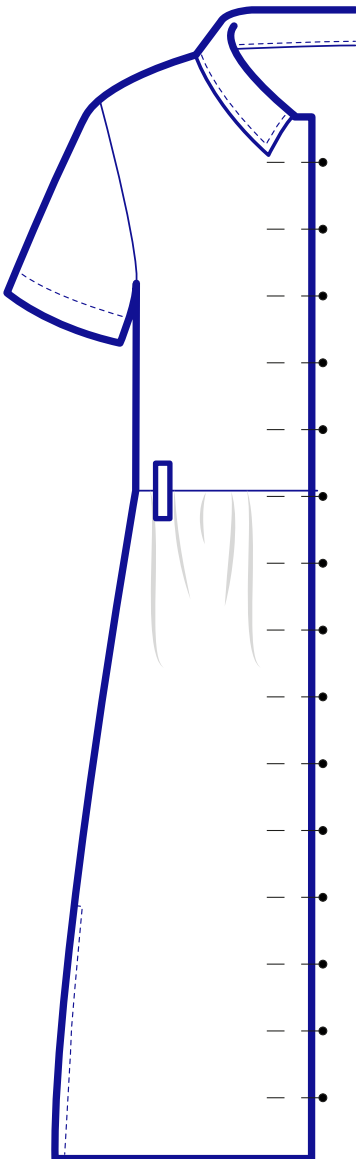




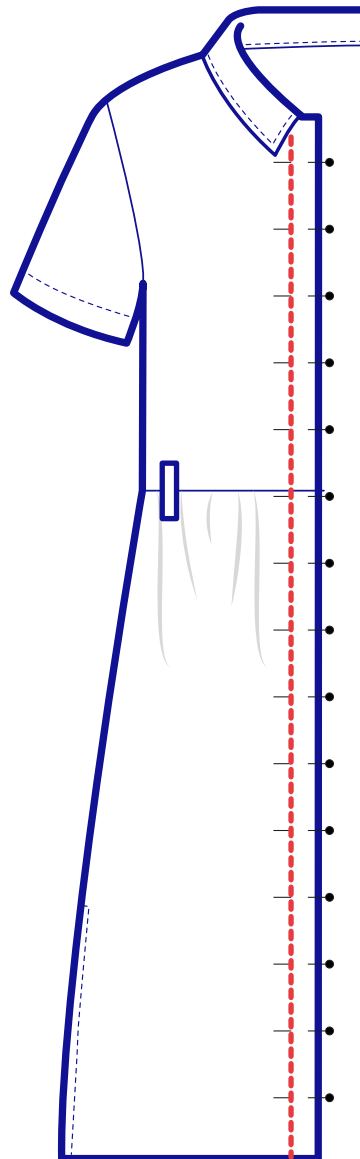
Stitch top to skirt. Make sure the facings of the top and the bottom are pinned on top of each other, CF should be on CF, align side seams. Press.



Press facings and front really well. Pin left and right facing as shown.

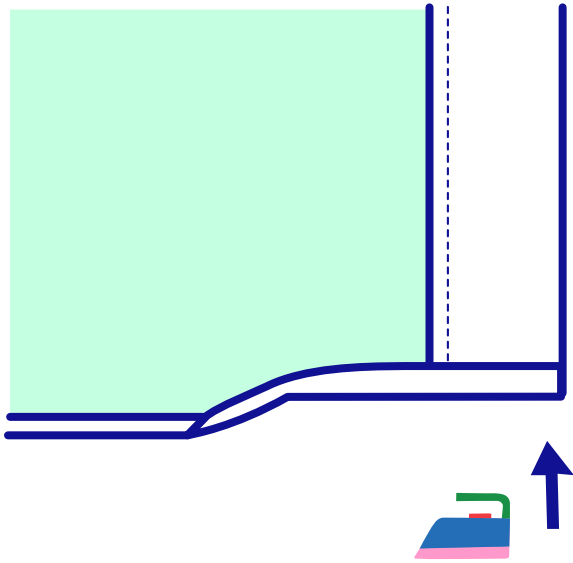


Top stitch both sides at 3cm-1 1/5". You can follow the facing or simply go straight up, whatever you feel like.

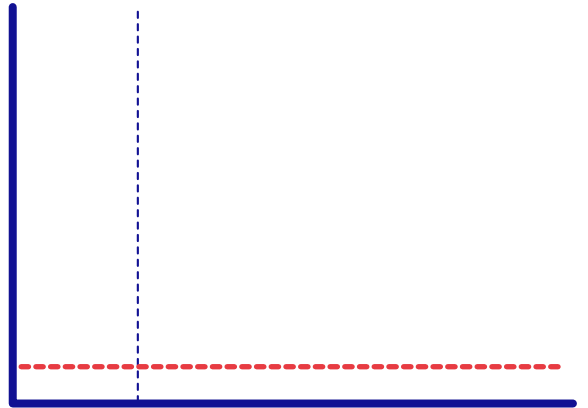




Press the skirt hem all around. First 0,5cm-1/5" then another 0,5cm-1/5".



Top stitch.



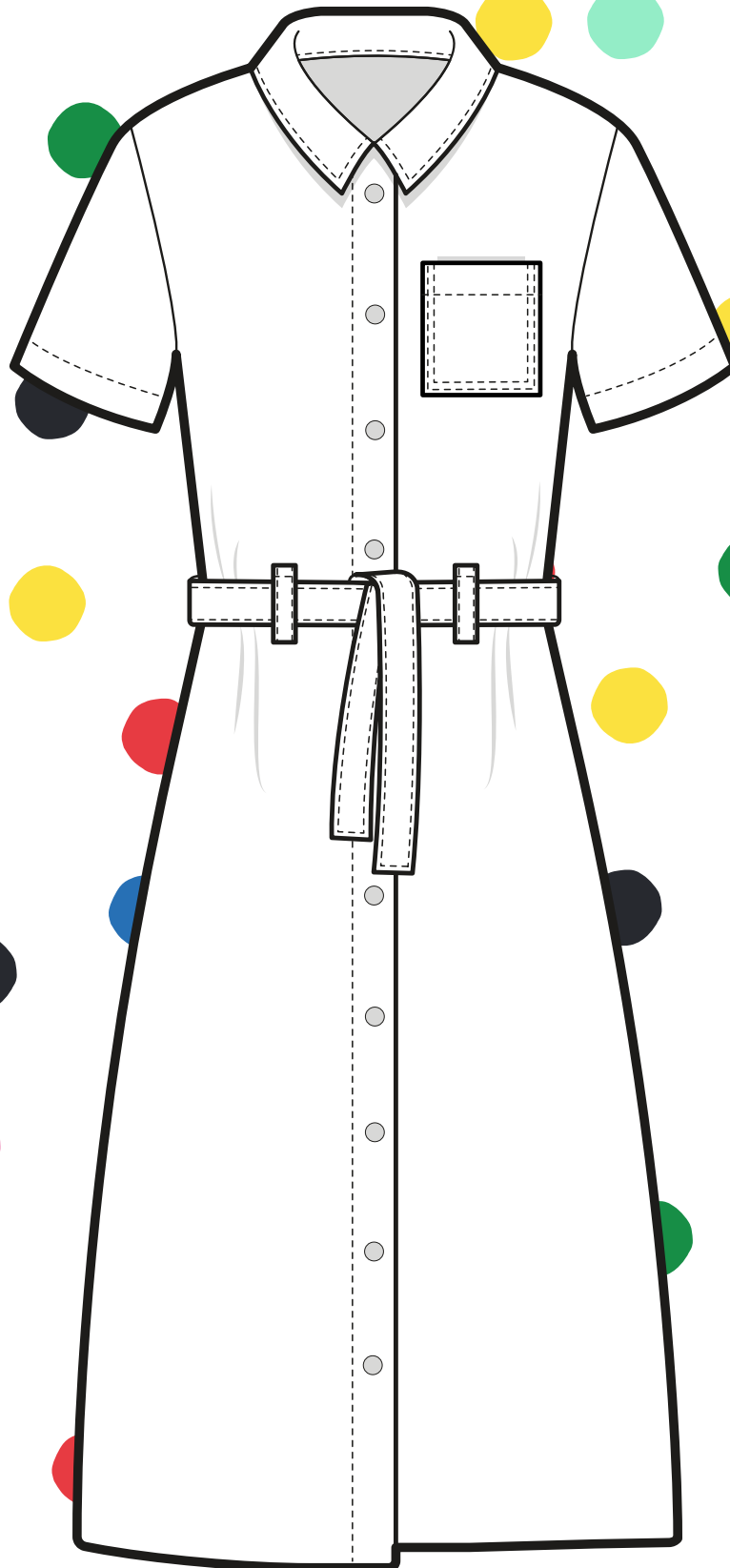
Make buttonholes to fit your buttons and sew on buttons or use snapbuttons. Don't go all the way down because you'll need some room to catch that bus, ride that bike, dance away..



Pour yourself a (virgin) cocktail ;)



Let's celebrate!!! Now you can dance all night in your new Bobbinhood Maxi Dress! Or screenprint. Or read a book with a G&T. Or just hang it on a hanger and make sure it is the first thing you see tomorrow morning.



**Share what
you make
and inspire!**

#WEARE

BOBBIN

HOOD 