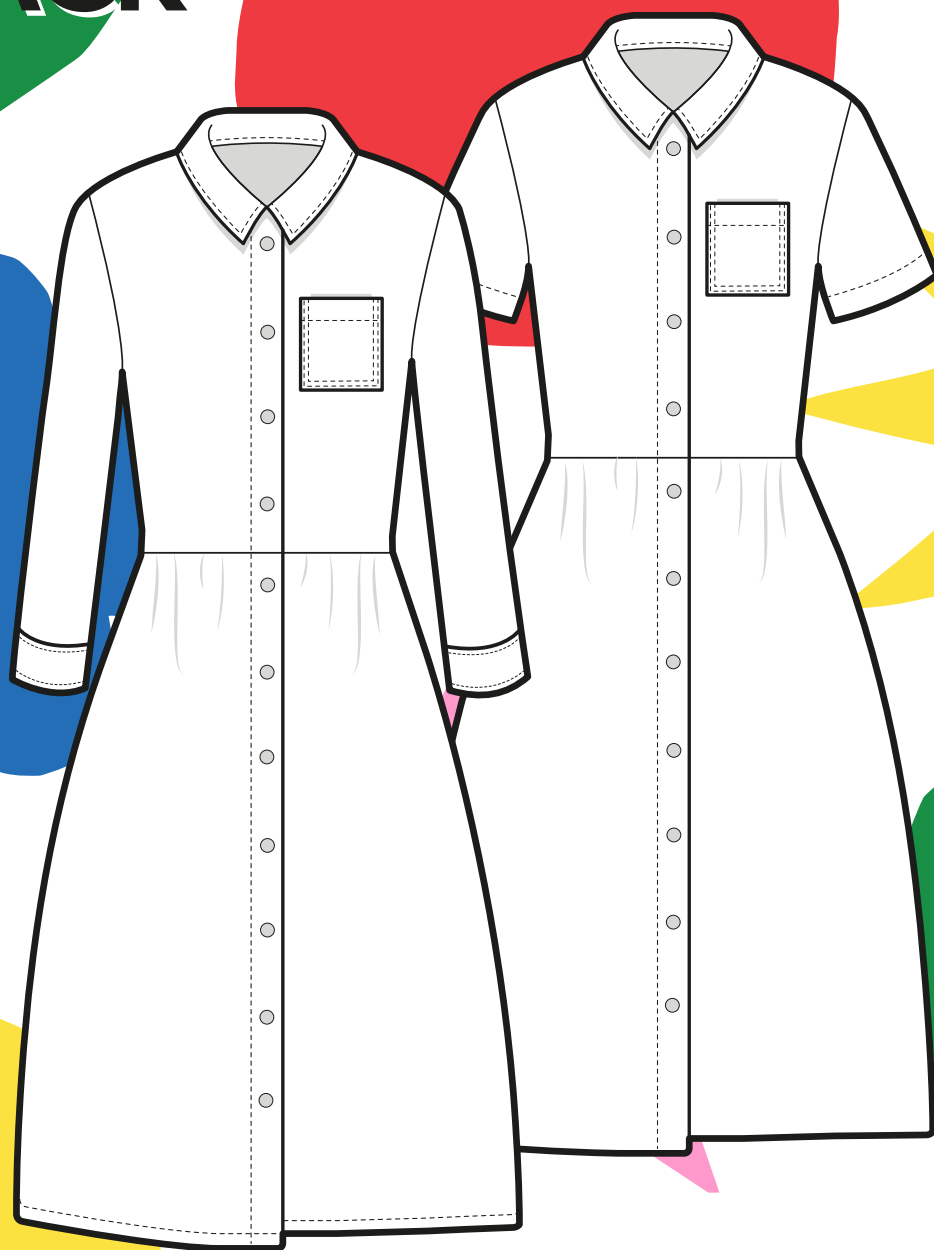




# BOBBINHOOD KIDS SUIT PATTERN HACK



## MAXI DRESS

**BOBBINHOOD  
PRESENTS  
THE ULTIMATE  
PATTERN HACK**

**3, 2, 1...  
HERE  
WE GO!**

**Ever since I studied fashion design I have a big love for hacking patterns. So hacking my own pattern and sharing it with y'all is double fun!!!**

**It might seem overwhelming to hack and adjust a pattern or even transform it into something else but once you get the hang of it is so much fun and it broadens your sewing horizon!**

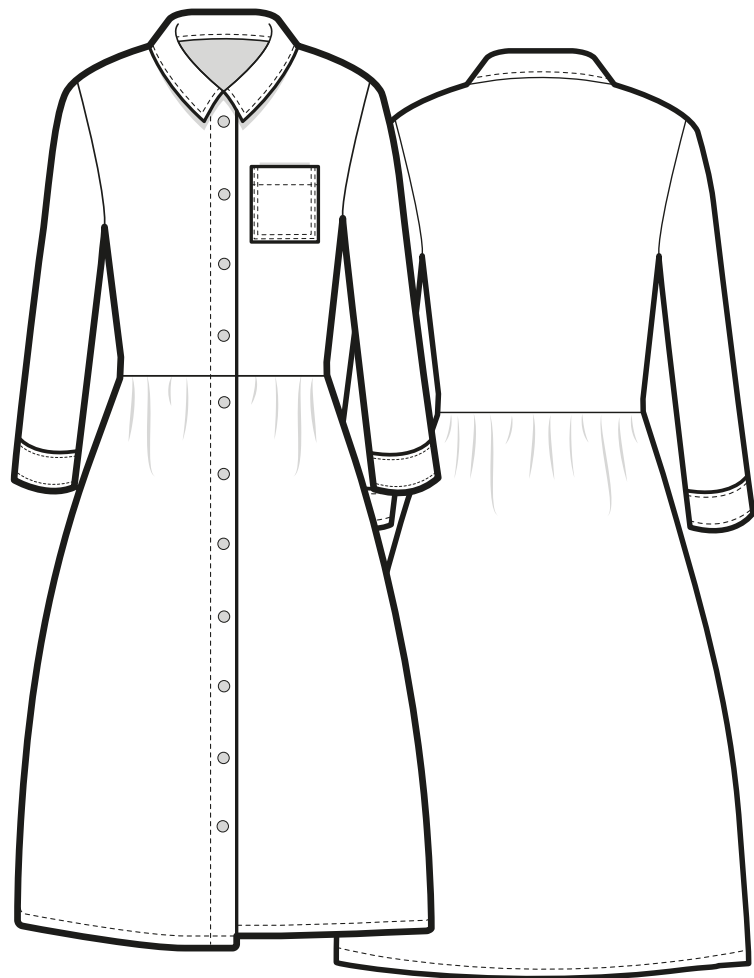
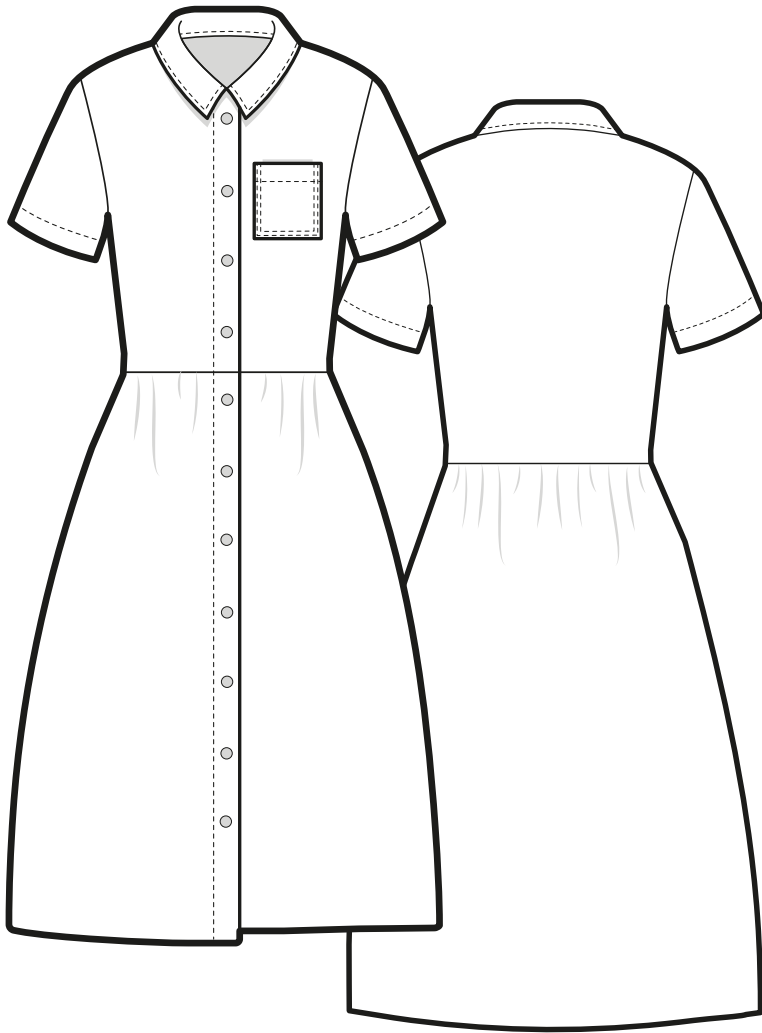
**For this maxi dress you can make the top part exactly as you made it for the original Bobbinhood suit (if you don't have it yet you can find it the pattern in our webshop [www.bobbinhood.com/shop](http://www.bobbinhood.com/shop)). Simply choose long or short sleeves. For the skirt part you have to draw your pattern yourself. No worries, I will take you through the entire process step by step from measuring to the last stitch! Have fun!**

**XO Barbara aka Bobbinhood**



# SKETCH AWAY

**Here you can sketch away and contemplate what print you'd like on your maxidress! Make a cool back print, a small print on the front or go wild with an all over. Everything goes!**





# MEASUREMENTS

## size chart

CM INCH	92/98 2 / 3 y	104/110 4 / 5 y	116/122 6 / 7 y	128/134 8 / 9 y	140/146 10 / 11 y	152/158 12 / 13 y
CHEST	55-56,6 22 <sup>1</sup> / <sub>4</sub> -22 <sup>1</sup> / <sub>4</sub>	58-61 21 <sup>2</sup> / <sub>3</sub> -24	64-67 22 <sup>7</sup> / <sub>8</sub> -26 <sup>2</sup> / <sub>5</sub>	70-73 25 <sup>1</sup> / <sub>5</sub> -28 <sup>3</sup> / <sub>4</sub>	76-79 27-31 <sup>1</sup> / <sub>8</sub>	82-85 29 <sup>7</sup> / <sub>8</sub> -33 <sup>1</sup> / <sub>2</sub>
WAIST	52-53 20 <sup>1</sup> / <sub>2</sub> -20 <sup>7</sup> / <sub>8</sub>	54-55,6 21 <sup>1</sup> / <sub>4</sub> -21 <sup>7</sup> / <sub>8</sub>	57-58,6 22 <sup>1</sup> / <sub>2</sub> -23 <sup>1</sup> / <sub>8</sub>	60-62 22 <sup>1</sup> / <sub>2</sub> -24 <sup>2</sup> / <sub>5</sub>	64-66 23 <sup>5</sup> / <sub>8</sub> -26	68-70 26 <sup>3</sup> / <sub>4</sub> -27 <sup>1</sup> / <sub>2</sub>
HIP	58-60 22 <sup>7</sup> / <sub>8</sub> -23 <sup>5</sup> / <sub>8</sub>	62-65 24 <sup>2</sup> / <sub>5</sub> -25 <sup>5</sup> / <sub>8</sub>	68-71 26 <sup>3</sup> / <sub>4</sub> -28	74-77,6 29 <sup>3</sup> / <sub>4</sub> -30 <sup>1</sup> / <sub>2</sub>	81-84,6 31 <sup>7</sup> / <sub>8</sub> -33 <sup>1</sup> / <sub>3</sub>	88-91,6 34 <sup>2</sup> / <sub>3</sub> -36
BODY LENGTH	92-98 3ft <sup>1</sup> / <sub>5</sub> "- 3ft <sup>2</sup> / <sub>3</sub> "	110 3ft5"-3ft7"	122 3ft10"-4ft	134 4ft3"-4ft5"	146 4ft7"-4ft10"	158 4ft12"-5ft2"

## finished garment

CM INCH	92/98 2 / 3 y	104/110 4 / 5 y	116/122 6 / 7 y	128/134 8 / 9 y	140/146 10 / 11 y	152/158 12 / 13 y
CHEST	59 23 <sup>1</sup> / <sub>4</sub>	65 25 <sup>5</sup> / <sub>8</sub>	71 28	77 30 <sup>1</sup> / <sub>3</sub>	83 32 <sup>2</sup> / <sub>3</sub>	89 35
WAIST	54 21 <sup>1</sup> / <sub>4</sub>	60 23 <sup>5</sup> / <sub>8</sub>	66 26	72 28 <sup>1</sup> / <sub>3</sub>	78 30 <sup>2</sup> / <sub>3</sub>	84 33
WAIST without back dart	60 23 <sup>5</sup> / <sub>8</sub>	66 26	72 28 <sup>1</sup> / <sub>3</sub>	78 30 <sup>2</sup> / <sub>3</sub>	84 33	90 35 <sup>2</sup> / <sub>5</sub>
HIP	64 25 <sup>1</sup> / <sub>5</sub>	70 27 <sup>1</sup> / <sub>2</sub>	76 29 <sup>7</sup> / <sub>8</sub>	82 32 <sup>1</sup> / <sub>4</sub>	88 34 <sup>1</sup> / <sub>3</sub>	94 37
LENGTH TOP front from hsp	33 13	36 14 <sup>1</sup> / <sub>5</sub>	39 15 <sup>1</sup> / <sub>3</sub>	42 16 <sup>1</sup> / <sub>2</sub>	45 17 <sup>2</sup> / <sub>3</sub>	48 18 <sup>7</sup> / <sub>8</sub>
LENGTH SKIRT side seam	49,5 19 <sup>1</sup> / <sub>2</sub>	57,5 22 <sup>3</sup> / <sub>5</sub>	65,5 25 <sup>4</sup> / <sub>5</sub>	73,5 28 <sup>7</sup> / <sub>8</sub>	81,5 32 <sup>1</sup> / <sub>8</sub>	89,5 35 <sup>1</sup> / <sub>4</sub>

This is for a maxi dress, you can ofcourse choose your own length. We'll tell you all about it later on in this manual!





# 1st THINGS 1st

- 1** This pattern is **WITHOUT** seam allowance. We like to add 1 cm - 3/8" but please add what you are you used to. Add this allowance to all seams.
- 2** You will need the Bobbinhood suit pattern and manual as well as this hack manual to be able to make this maxidress.
- 3** Pre wash your fabric and iron before cutting. No fun at all if you ask me but veeeery important ;)
- 4** Have fun! This manual is just a guideline, please feel free to do whatever you feel like.

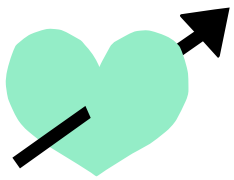
## fabric requirements

Use a Tencel, chambray, crepe, gaberdine twill, linen, or anything similar for a flowy, classy version of the dress. Go for a medium denim, twill, light/medium canvas for a more casual or workwear inspired look. Make a soft play version in a jersey or light sweat.

CM yards	92/98 2 / 3 y	116/122 6 / 7 y	152/158 12 / 13 y
MAXI DRESS with LONG sleeve	110,0 1,2	145,0 1,6	210,0 2,3
MAXI DRESS with SHORT sleeve	100,0 1,1	135,0 1,5	200,0 2,2
LINING pockets	25,0 0,25	25,0 0,25	25,0 0,25

## supplies

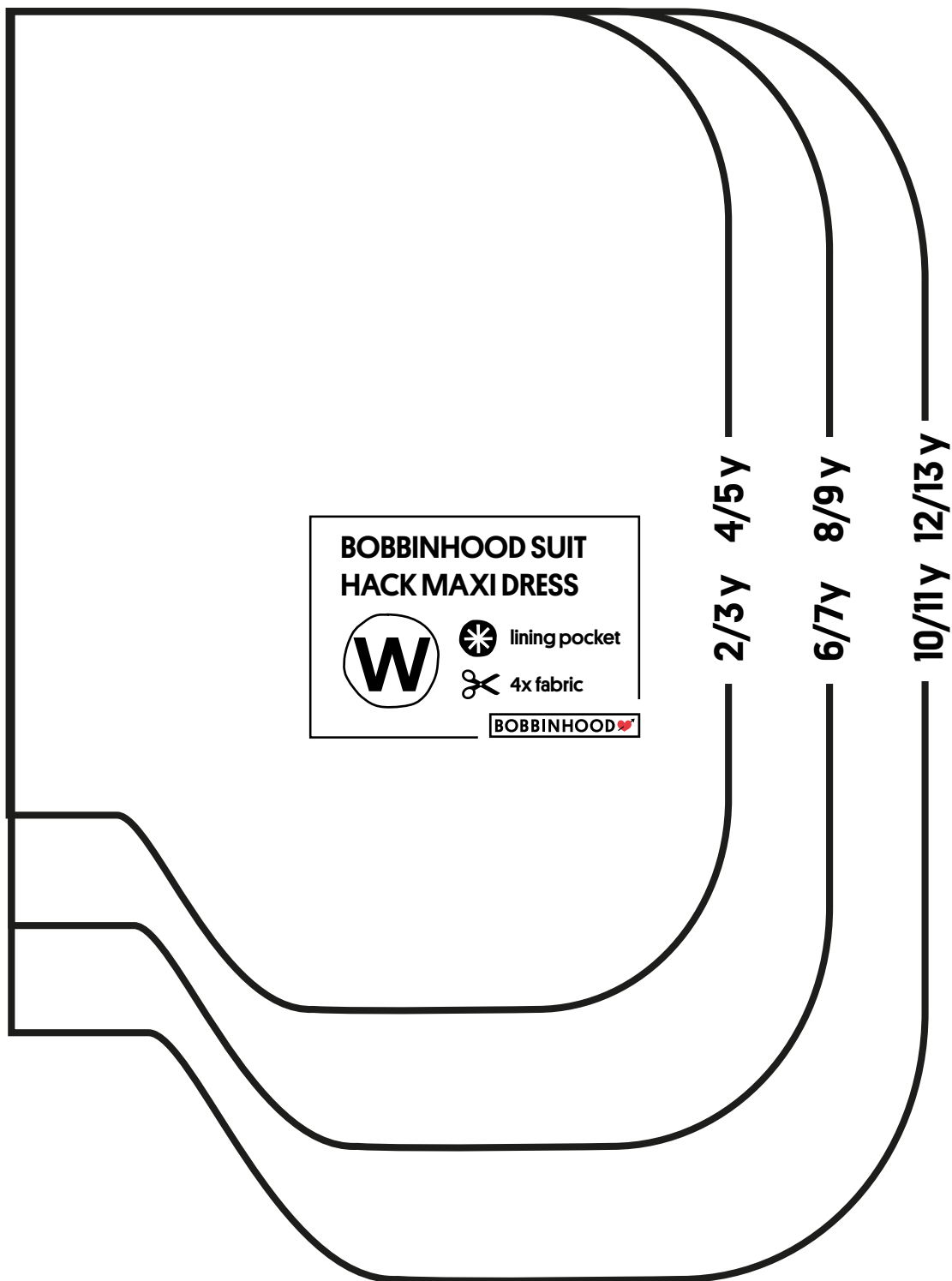
- Fusible interfacing
- (snap)Buttons:  
2/3yr 10pcs, 6/7yr 12pcs,  
12/13yr 14pcs. Add 2 pcs  
for the long sleeve.
- Lining
- Thread

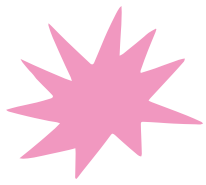


# EXTRA PATTERN

**Print this page at 100%. Do not scale!!!**

**Cut this pattern 4x out of lining fabric, remember the pattern has no seam allowance.**





# HACK PATTERNS

1

The top part of the maxi skirt is exactly the same as the Bobbinhood suit. So all you have to do is choose if you want a short or long sleeve.

2

For the bottom part you'll have to draw the pattern yourself. It is not hard at all, we'll help you out!

First decide on the length of the skirt:

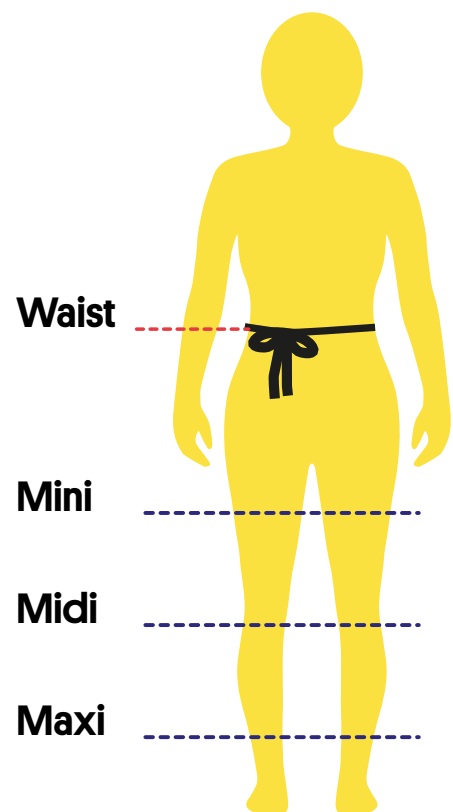
For my 4 year old I made the skirt part 60cm-33 $\frac{1}{2}$ " in length, she loves her skirts loooong.

You can ofcourse make your personal desired length as follows:

Grab a ribbon or something similar and tie it around the smallest part of the waist.

Measure down from the waist to where you want the skirt part to end.

Make this the length of the skirt patterns.

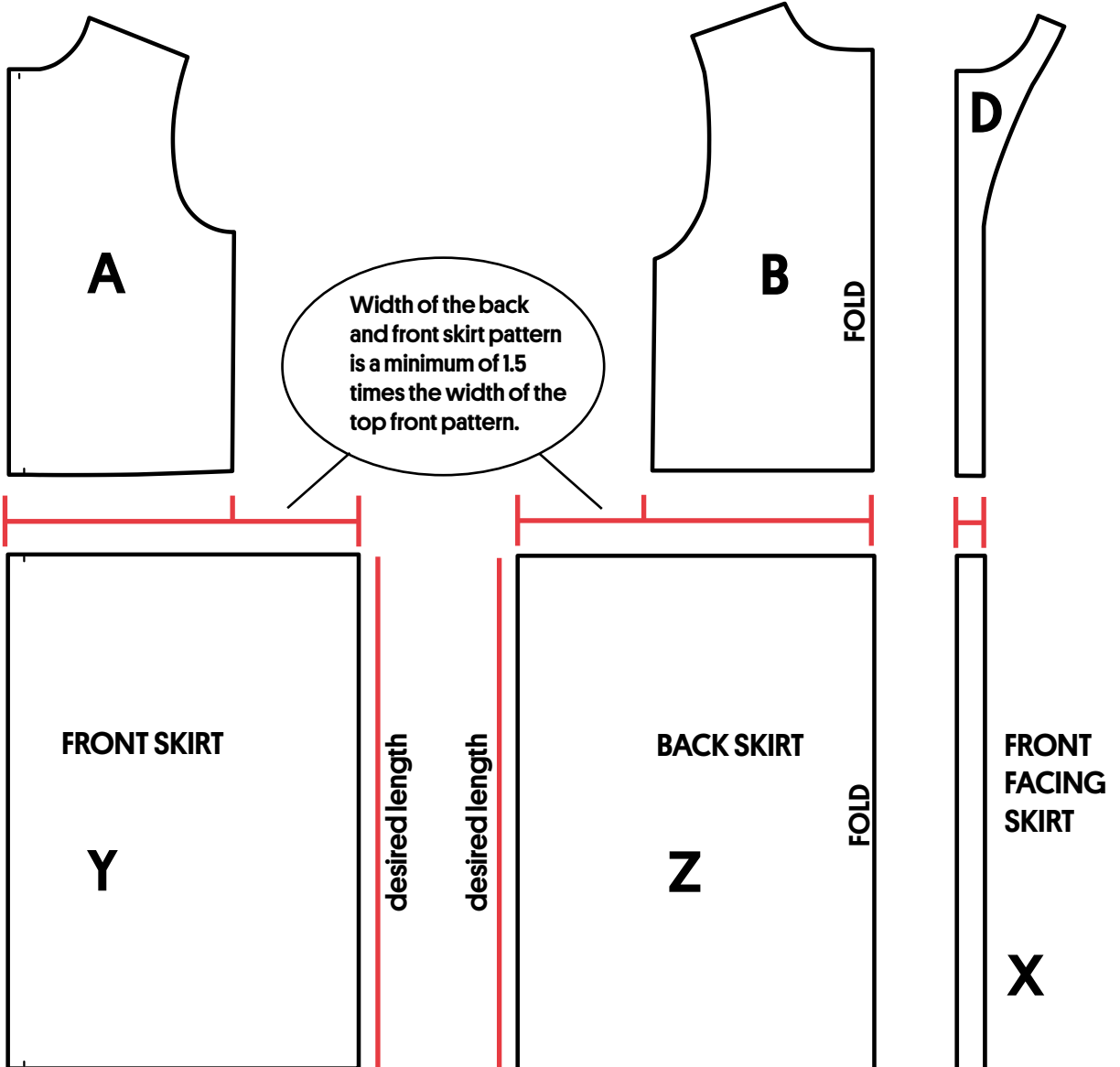




# HACK PATTERNS

3

PATTERNS  
A+B+D  
FROM THE  
ORIGINAL  
BOBBINHOOD  
SUIT  
PATTERN



PATTERNS YOU  
HAVE TO  
MAKE (NO  
WORRIES:  
EASY PEASY)  
FOR THIS  
HACK



Measure the lower seam of both the front pattern and back pattern and multiply with a minimum of 1.5. Add more for a more ruffled skirt part!

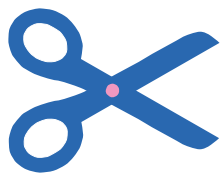


Make the pattern as long as you want. For my 4yr old I made it 60cm-33 1/2". She loves them looong.



Make the front facing pattern by using the same width as the top facing (pattern D) and length as your self drafted skirt patterns.



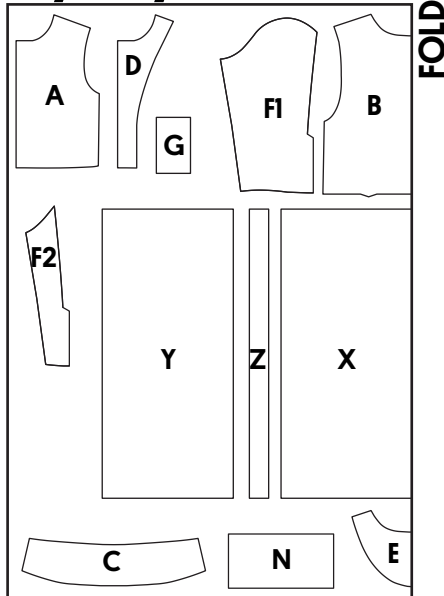


# CUT LONG SLV

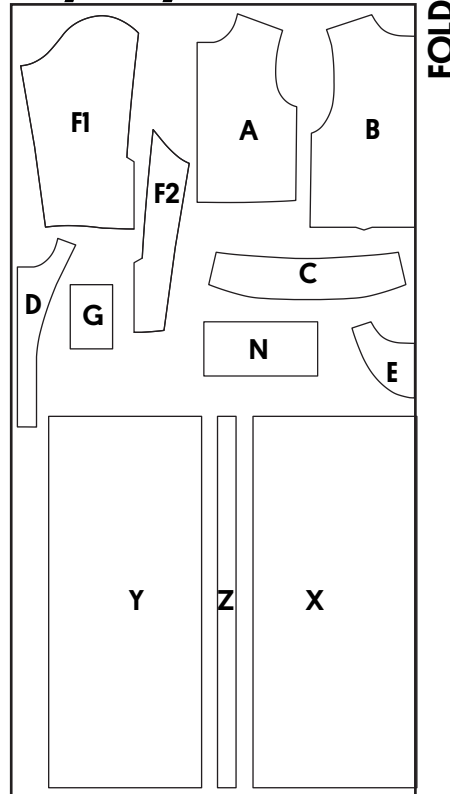
**Fabric width 150cm - 60"**

This chart is for when the width of the skirt patterns is 1.5x the top part.

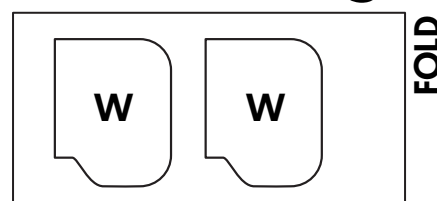
**2 / 3 y**



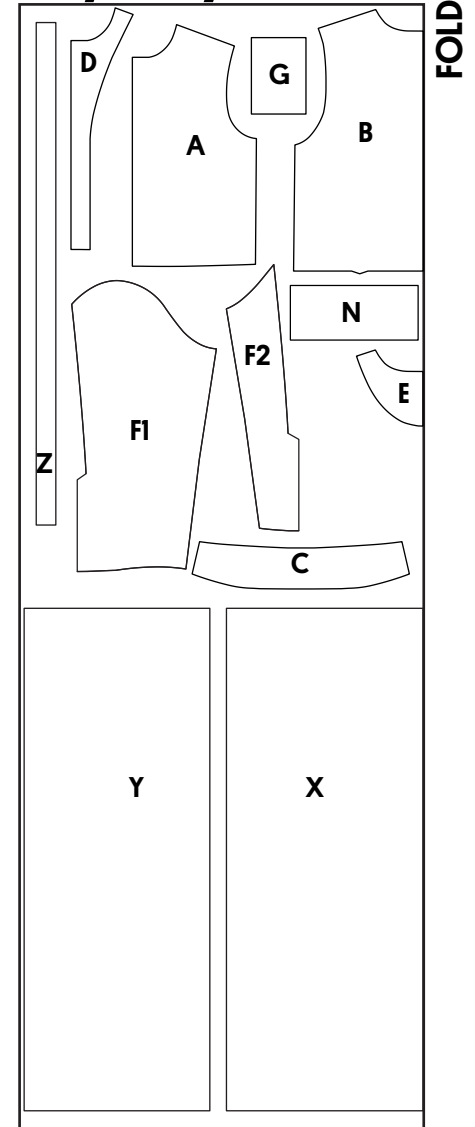
**6 / 7 y**



**ALL SIZES lining**



**12 / 13 y**



**TIP:** If you made the Bobbinhood suit before and you know what top size is best. Make this first then add a muslin skirt to see if the width you choose for the pattern is right.

**A. Front top**  
2x fabric

**B. Back top**  
1x fabric, fold

**C. Collar**  
2x fabric, 1x fusing

**D. Facing front**  
2x fabric, 2x facing

**E. Facing back**  
1x fabric, fold

**F1&2. LONG SLEEVE**  
2x fabric

**G. Front top pocket**  
1 or 2x fabric

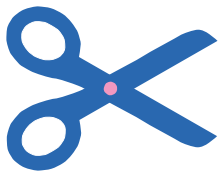
**N. Cuff**  
2x fabric

**W. Lining pocket**  
4x lining

**X. Facing skirt**  
2x fabric, 2x fusing

**Y. Front skirt**  
2x fabric

**Z. Back skirt**  
1x fabric, fold

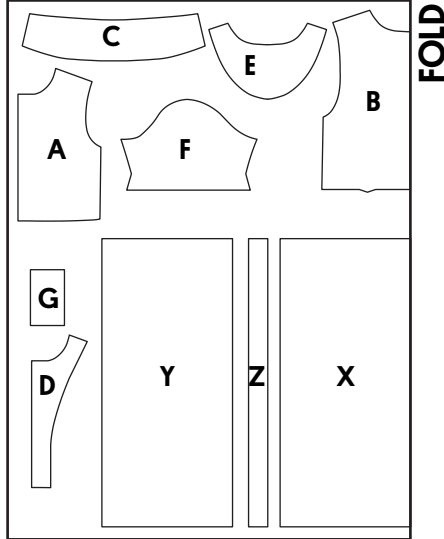


# CUT SHORT SLV

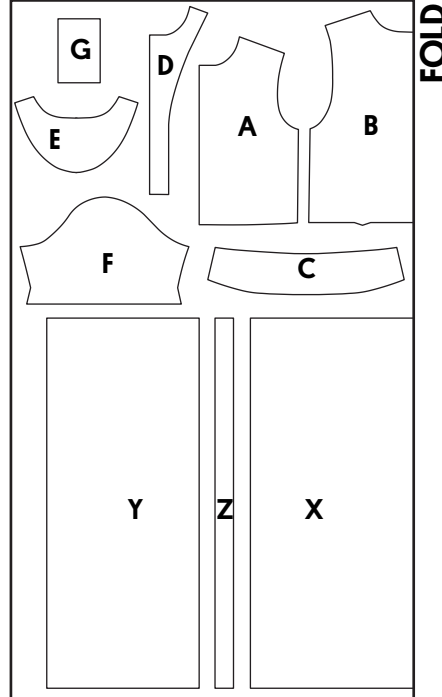
**Fabric width 150cm - 60"**

This chart is for when the width of the skirt patterns is 1.5x the top part.

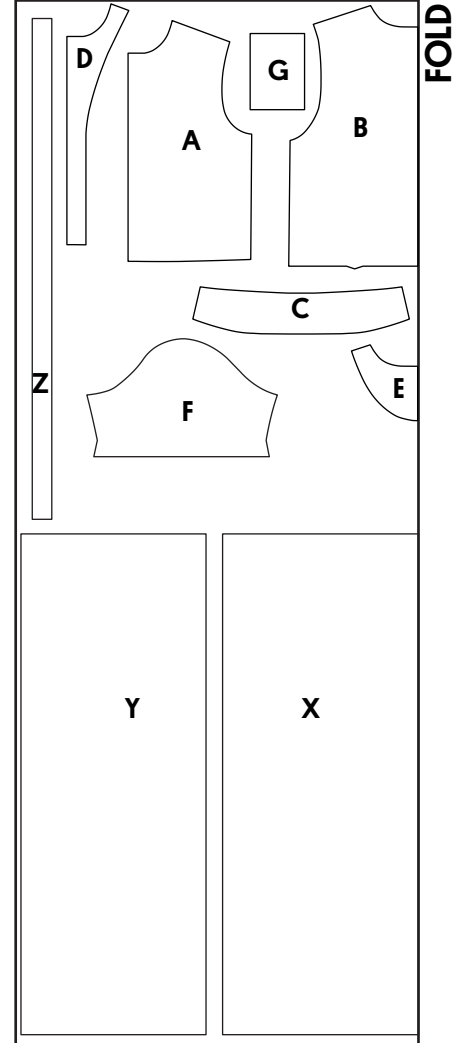
**2 / 3 y**



**6 / 7 y**

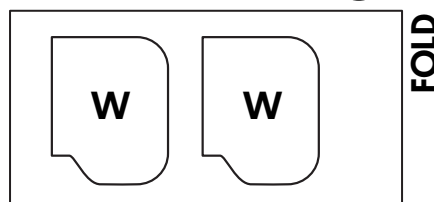


**12 / 13 y**



**TIP:** If you made the Bobbinhood suit before and you know what top size is best for you. Make this first then add a muslin skirt to see if the width you choose for the pattern is right.

**ALL SIZES lining**



**A. Front top**  
2x fabric

**B. Back top**  
1x fabric, fold

**C. Collar**  
2x fabric, 1x fusing

**D. Facing front**  
2x fabric, 2x facing

**E. Facing back**  
1x fabric, fold

**F. Sleeve**  
2x fabric

**G. Front top pocket**  
1 or 2x fabric

**W. Lining pocket**  
4x lining

**X. Facing skirt**  
2x fabric, 2x fusing

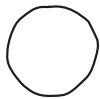
**Y. Front skirt**  
2x fabric

**Z. Back skirt**  
1x fabric, fold



# WORK FLOW

Here at Bobbinhood we have a thing for creative workflow charts. For every project we do we make a clear list of steps and whenever we worked on a step we grab our markers and color the indicators. It's so fun we decided to make you one for this project as well!



**Measure the kid ;)**



**Print new pockets pattern**



**Hack the pattern**



**Make a muslin (or not if your like to wing it :))**



**Cut everything**



**Fuse**



**Make top**



**Make skirt**



**Add beltoops and attach top and skirt**



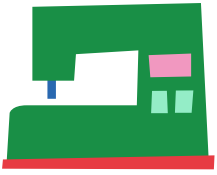
**Attach buttons**



**Confetti! Celebrate! Wohooooooooo!**



**Share what you made #WEAREBOBBINHOOD**



# LET'S GO

For this hack you'll need your Bobbinhood manual at hand as well and you will switch back and forth. You will only need the TOP PART section that starts on page 11. We will talk you through the entire hack. No worries!



RIGHT SIDE



WRONG SIDE



Seam that has to be stitched in that step



Seam that has to be finished



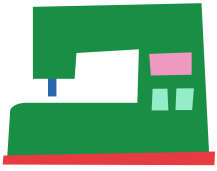
Follow step **1** and **2** of the Bobbinhood suit manual.  
Stitch the darts in the top back.



Follow step **3** to **20** for short sleeves or to **36** for long sleeves, of the original Bobbinhood suit manual [available in our webshop].



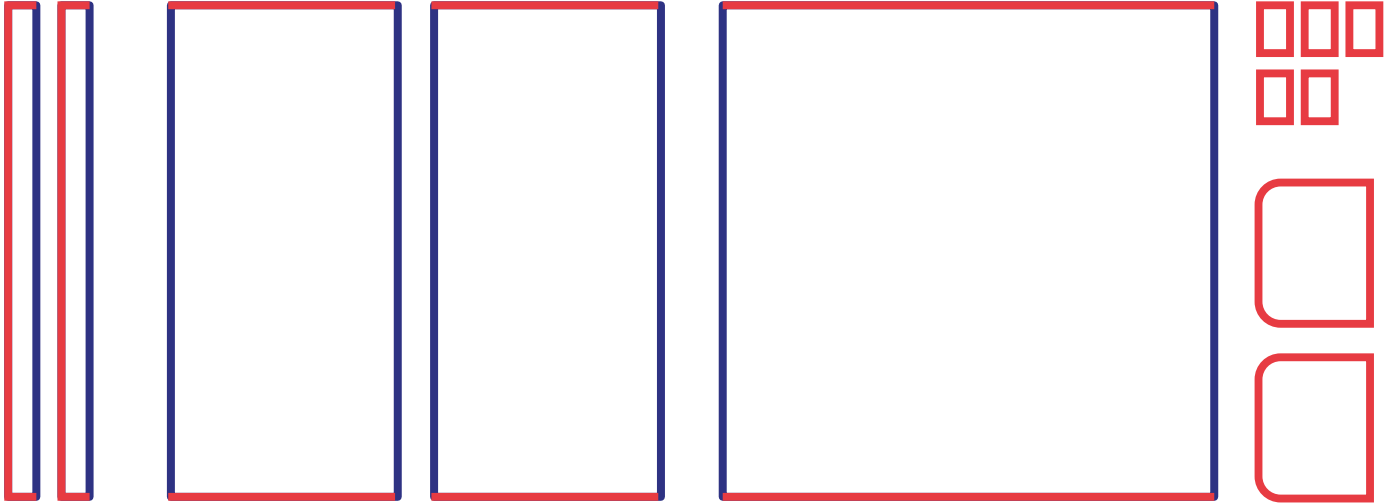
When you have the top all finished: Do a quick fit. Happy?  
Continue with this manual to make a maxi dress.



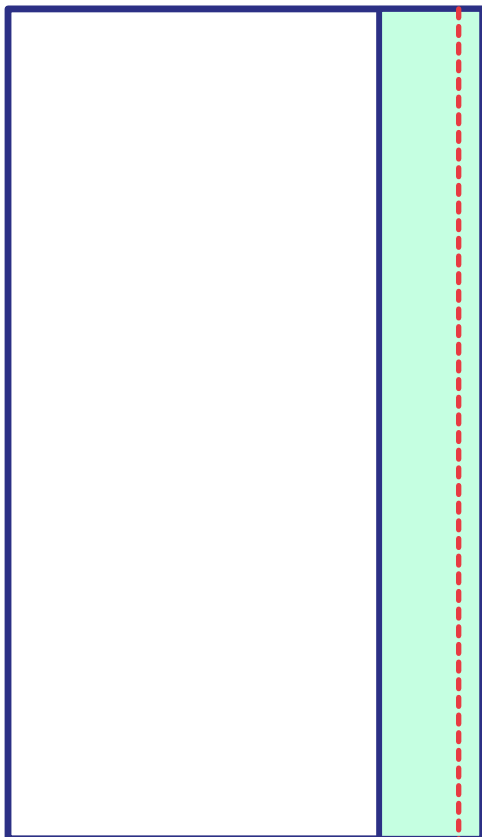
# BOTTOM PART



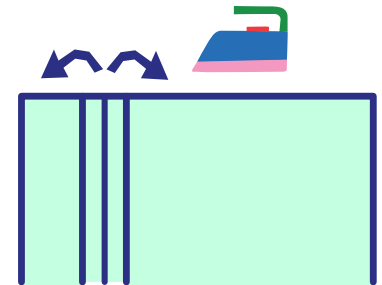
Finish all the seams that are indicated red.



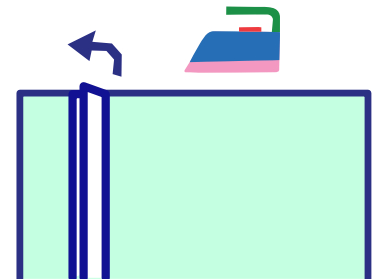
Stitch facing to both fronts.



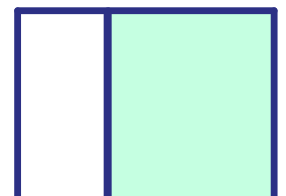
Press seam open



towards facing



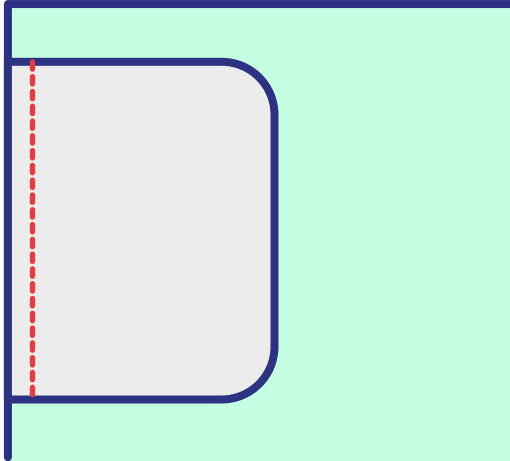
press the facing  
entirely to the back





Position pocket about 2,5cm-1" from top seam. Stitch pocket at 0,5cm-1/5" from edge to the side seam.

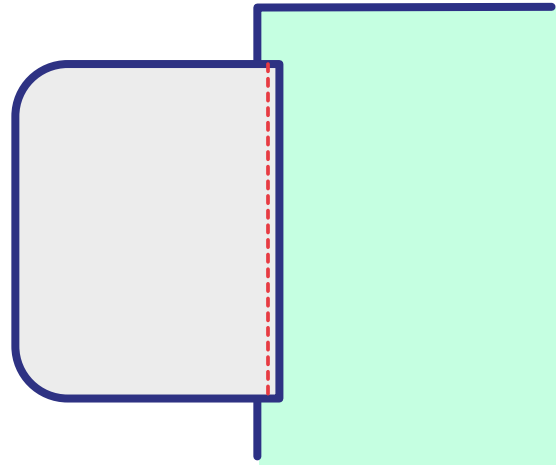
Do this 4x: both front pattern pieces and both sides of the back.



Overlock side seams.



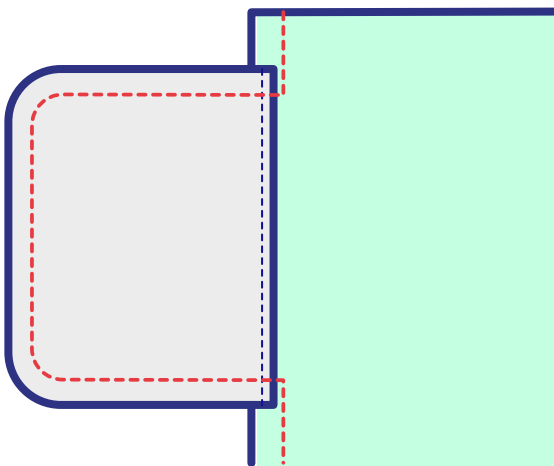
Press the pocket lining to the outside.  
Top stitch.



Do this for all 4 pocket linings, on both front and back patterns.



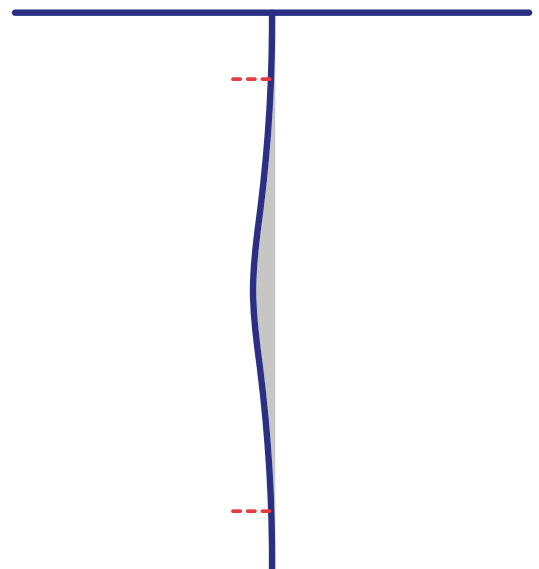
Place front and back on top of each other, good sides together. Align pocket, pin and stitch. As indicated at 1cm-3/8".



Continue stitching and close the entire side seam.



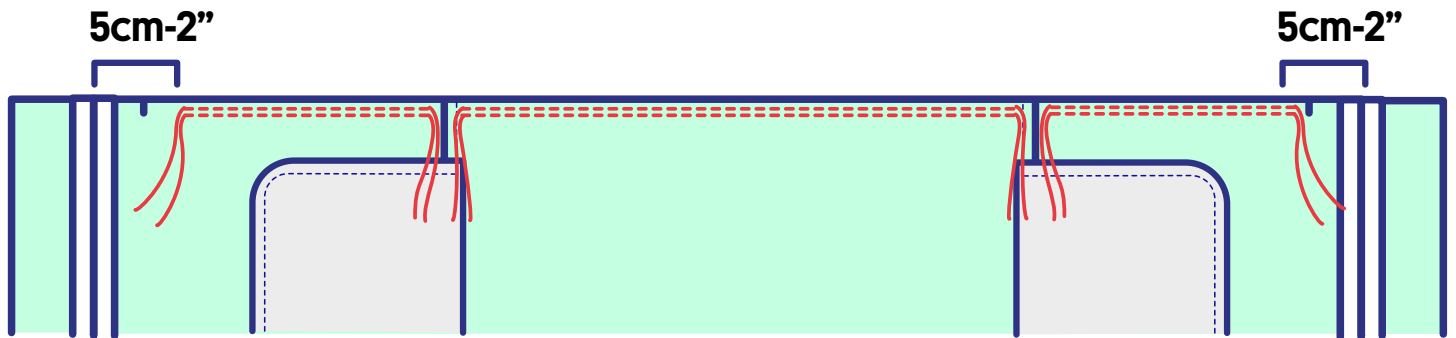
Press the pocket to the front.  
Turn to the good side and press the pocket opening nice and sharp.



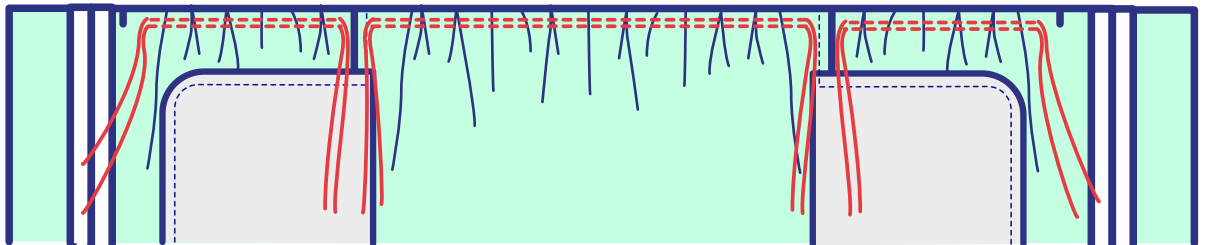
Stay stitch just above and under the opening in the side seam for extra strength.



**Time to attach the skirt to the top! First make sure they fit together: inside the topseam allowance of the skirt, stitch two long rows of basting stitches. Leave long threads at the ends.**



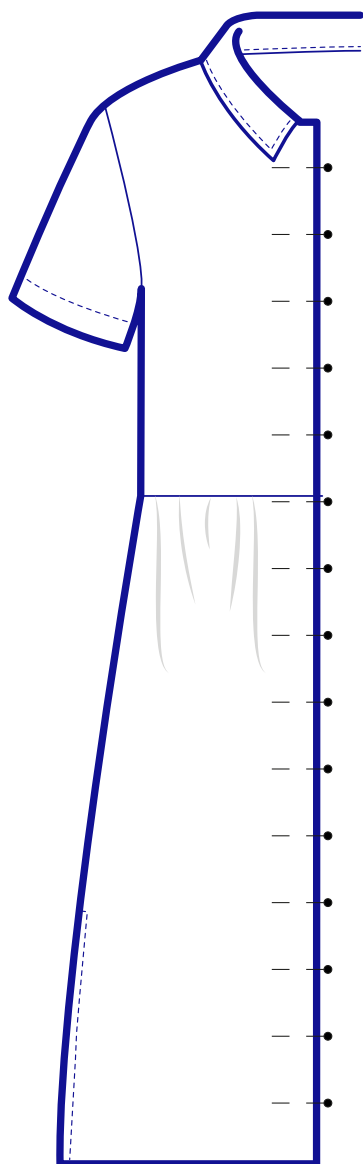
**Gently pull on the threads to gather your fabric. Gather both front parts and the back part to fit with your top. When all is good secure the threads with a knot.**



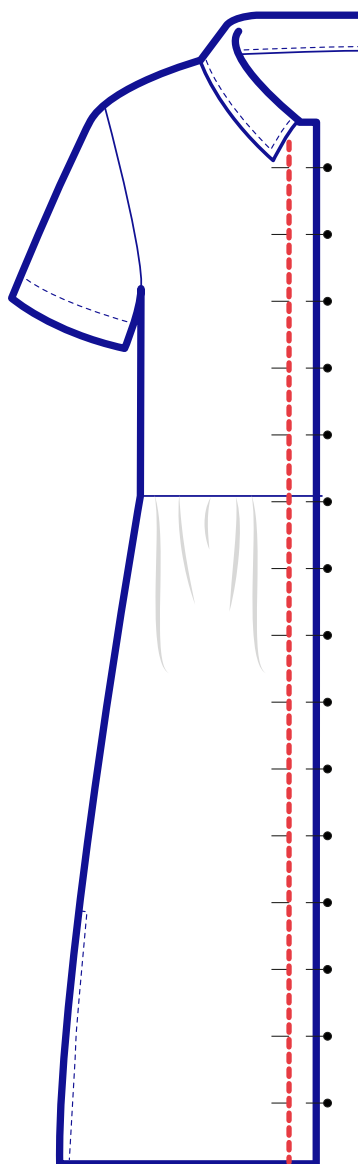
**Stitch top to skirt. Make sure the facings of the top and the bottom are pinned on top of each other, CF should be on CF, align side seams. Press.**



**Press facings and front really well. Pin left and right facing as shown.**



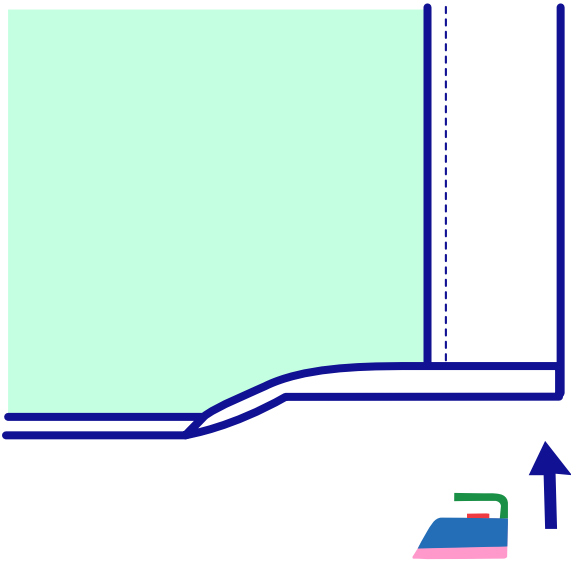
**Top stitch both sides at 3cm-1 1/5". You can follow the facing or simply go straight up, whatever you feel like.**



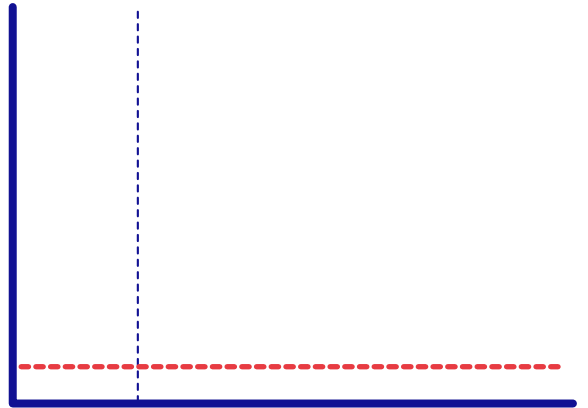




**Press the skirt hem all around. First 0,5cm-1/5" then another 0,5cm-1/5".**



**Top stitch.**



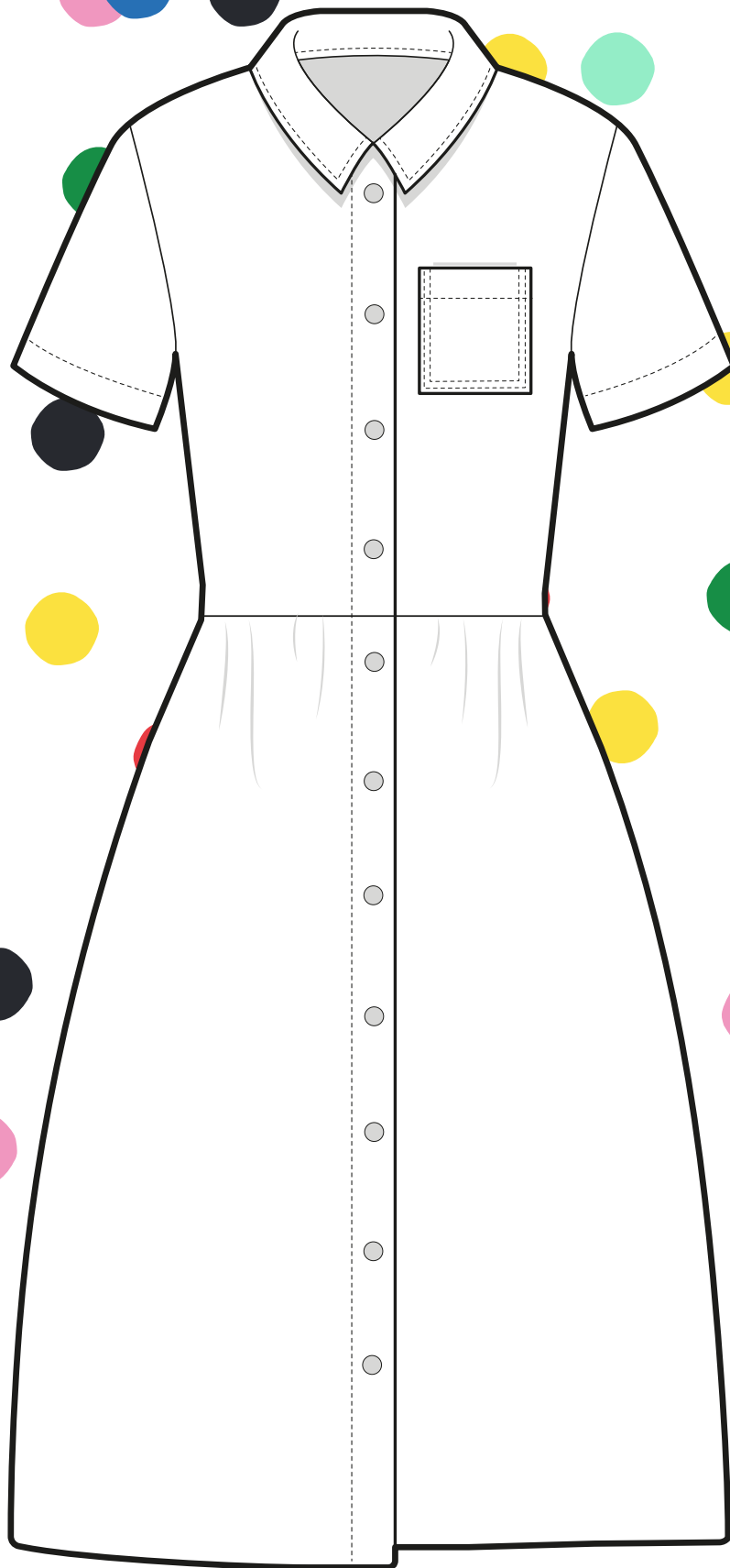
**Make buttonholes to fit your buttons and sew on buttons or use snapbuttons. Don't go all the way down because you'll need some room to run, ride that bike, dance away..**



**Pour yourself a (virgin) cocktail ;)**



**Let's celebrate!!! With lots and lots of confetti! Always.**



**Share what  
you make  
and inspire!**

**#WEARE**

**BOBBIN**

**HOOD** 