A close-up photograph of a person's mouth and hand. The lips are coated in a vibrant, glossy red lipstick. To the right, a hand is visible with fingers slightly curled, showing a bright red manicure on the nails. The skin is a warm, light brown tone. The overall composition is intimate and focuses on beauty and grooming.

NAIL PERFECTTM

PROFESSIONAL SYSTEMS



◆◆◆ OUR STORY ◆◆◆

We are proud to introduce NailPerfect to you.

NailPerfect has developed from a strong foundation over the past 25 years and characterizes and distinguishes itself in the market with the latest, innovative products selected by our professionals.

NailPerfect is a brand for everyone.

We offer many distribution options with a perfectly coordinated price / quality ratio.

NailPerfect is designed for the exuberant types, for those who don't take life too seriously, for the colorful days but especially for those who enjoy life to the fullest. With our new salon testing program we bring wishes and expectations to reality together with the customer.

With NailPerfect we always look ahead and stay up to date with the latest trends.

Have a look at our broad spectrum of hand and nail products and color up your days!

TABLE ♦♦♦ OF ♦♦♦ CONTENTS

PREP

SOLVENTS

GEL

UPVOTED

ACRYLIC

KITS

FILES, FORMS & TOOLS

TREATMENT

MISCELLANEOUS



◆◆◆ PREP ◆◆◆



NailPerfect Blue Scrub
100 ml / 250 ml / 1000 ml

is natural nail surface cleaner. Blue Scrub cleanses and temporarily dehydrates the natural nail plate.



NailPerfect Insta Gel
236 ml

instant clean hands and feet with NailPerfect InstaGel!

NailPerfect Insta Spray

100 ml / 1000 ml

instant clean hands and feet with NailPerfect InstaSpray!



NailPerfect Cuticle Away

5 ml / 15 ml / 75 ml

softens the cuticle. Makes removing excess cuticle (dead skin) from the nailplate easier.



NailPerfect Cuticle Away Fishbowl

48 pcs 5 ml



NailPerfect Acid Free Primer

15 ml

this bonding agent forms powerful covalent bonds between the acrylic enhancement and natural nails for superior adhesion.



◆◆◆ SOLVENTS ◆◆◆



NailPerfect Nail Polish Remover Non Acetone
100 ml / 250 ml / 1000 ml
is perfect to remove nail polish on acrylics
and other types of artificial nails.
Also suitable for use on natural nails.



NailPerfect Brush Cleaner
100 ml
is designed to remove excess acrylic build up
from the brush. Proper use of this product will
extend the life of the brush.



NailPerfect UV Cleanser
100 ml / 250 ml / 1000 ml
is a cleanser to remove the sticky
layer of the gel.



NailPerfect Acetone
100 ml / 250 ml / 1000 ml
can be used to soak off acrylic nails.



NailPerfect Soak Off Gel Remover
100 ml / 250 ml / 1000 ml
is an universal, perfumed liquid to soak off gel
nails. It removes all Soak Off Gels from every
brand in just 10 minutes!



◆◆◆ GEL ◆◆◆



will give your artificial nails that finishing touch! These sheer pinks and shimmer No-Cleanse Top Seals convert any sticky gel surface into a “no-wipe” surface and provide a mirror glass finish with an exquisite sheer pink color or shimmer at the same time.



Oval Gel Brush: oval shaped gel brush suitable for all gel applications, including designs. For accurate application around cuticle area.

Angular Gel Brush: to clean up the smile line with a sharp smile line as result. Ideal for a reverse smile line when creating a nail bed extension.

Artistic Painting Brush: for covering larger areas while hand painting. Also suitable for gel design.

Artistic Painting Fine liner: suitable for detailed hand painting. May also be used for designs.



NailPerfect **No-Cleanse Top Seal**
5 ml / 15 ml
will convert any sticky gel surface into a “no-cleanse” surface and creates a mirror glass finish.

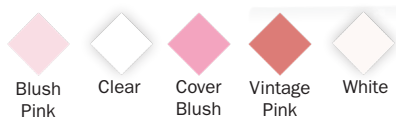


NailPerfect **Bonding Gel**
15 ml
is a non-acid primer with a strong grip that does not etch or damage the natural nail.



NailPerfect **Universal Air Bond**
5 ml / 15 ml
is an universal Air Bond is a low odor, acid free primer which dries in the air and can be used with all gel and acrylic systems. It promotes the adhesion to the natural nails.





NailPerfect **Squeasy Gel** 60 gr

offers the strength of acrylics and the flexibility of a gel. Have a perfect controllability and in combination with the **Squeasy Liquid Watermelon** 120ml and the **The Spatula** will also improve the workability. The Squeasy Gel has no odor and no heat when curing.



NailPerfect **Fiber Gel** 14 gr / 45 gr

creates an optimal adhesion, even on problematic nails. Fiber Gel is the perfect product to create thin and extremely strong nails.



NailPerfect **Foil Design Gel** 7 gr

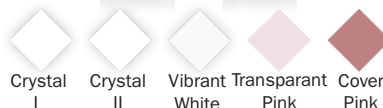
is a black, high pigment Foil Design Gel that creates the perfect tacky layer for your transfer foils to adhere to, allowing you endless opportunities for foil design.

NailPerfect **Paint On French Gel** 7 gr
is a white gel with a thin to medium consistency. Ideal for creating detailed designs and sharp smile lines using brushes of your choice.



NailPerfect **Color+ Gels** 7 gr

are highly pigmented gels that are ideal for detailed designs and One Stroke designs. This gel has a creamy consistency and a semi-matt top, which also makes this product very suitable for Fun French.



NailPerfect **LED/UV Sculpting Gels** 14 gr / 45 gr

create strong, natural looking nails in a faster way with the NailPerfect LED/UV Sculpting Gels. Like the traditional Sculpting Gels these LED/UV Sculpting Gels wear naturally and are ideal for tip overlays and sculpting, but cures faster in LED light.



◆◆◆ UPVOTED ◆◆◆

PERFECT POLISH



UPVOTED Soak Off Base Gel
15 ml
primes nail plates for an optimal
adhesion and prevents lifting of the
Soak Off Gel Polish.



UPVOTED High Shine No Wipe Top Gel
15 ml
is the perfect finish for the nail
professional. It will seal the nail
with a brilliant high shine.



UPVOTED Gelbreaker
15 ml
is a must have product! Waiting until your
gelpolish has been removed is now a thing of the
past. The Gelbreaker is the easiest way to remove
your gelpolish.



Upvoted Soak Off Builder Gel
14 gr
is a must have for soakable nails!
This Builder Gel is easy to apply in
just 2 thin layers. Creates a strong
nail. You can even build with tips or
forms.



UPVOTED Block the UV No Wipe Top Gel
15 ml / 5 ml
is a non yellowing top coat with a high shine
finish. Can be cured in LED 60 sec. and in
UV 120 sec.



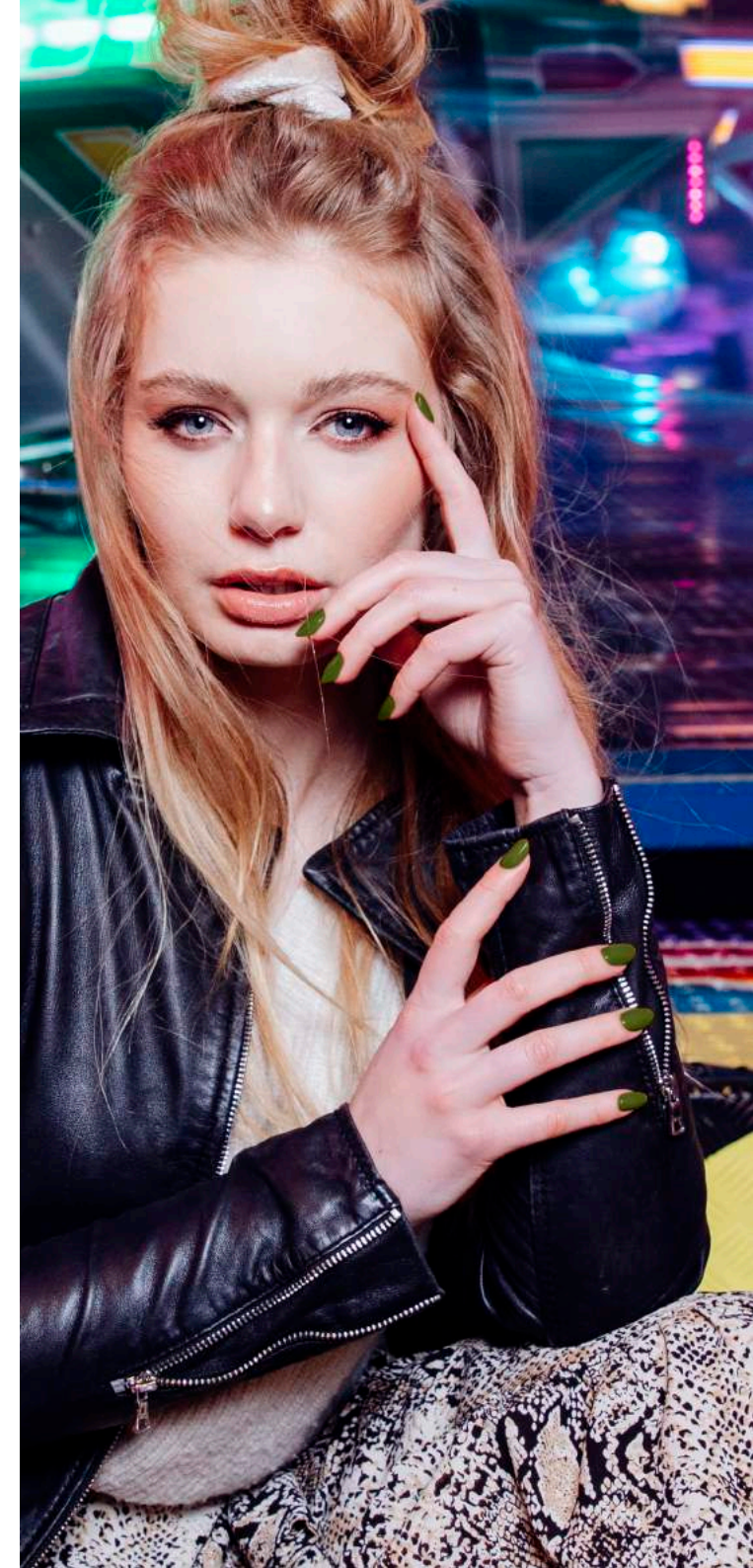
UPVOTED Soak Off Top Gel
15 ml
gives nails a smooth and high-shine
finish and protects the Soak Off Gel
Polish from fading or dulling.



UPVOTED Soak Off Matte Top Gel
15 ml
not only acts as a sealer to the underlying
colors, but creates the most amazing
matte finish without the need to file or
buff the surface.



UPVOTED Peel It Up Base
15 ml
is an 'air dry' base coat which can be
easily 'peeled off' without damaging the
natural nailplate. Perfect for sensitive
nails! This base can be used with our
UPVOTED gelpolish system.





UPVOTED Sweet & Psycho Cuticle Oil Fishbowl
48 pcs 5 ml



UPVOTED Cuticle Oils Sweet & Psycho
5 ml & 15 ml

are deeply nourishing cuticle treatment oils.
Sweet has a wonderful sweet scent of raspberry and melon and
Psycho is enriched with a scent of vanilla.
The essential oils within this oil are perfect for the cuticle area
which requires a high level of nourishment and repair.
Regular use will visibly improve the health of the cuticle.



UPVOTED Fiber in a Bottle
15 ml

creates an optimal adhesion, even on problematic nails.
Fiber in a Bottle is the perfect product to create thin and
extremely strong nails which fills up ridges.
Available in 3 different colors.



UPVOTED CATEYE
15 ml

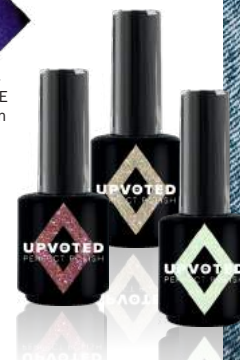
is a mesmerizing magnetic gel.
It comes in four different shades.
With a two sided magnet you can create different
dimensions in your design.

UPVOTED

◆◆◆ PERFECT POLISH ◆◆◆ COLOR CHART

									
#143 Feel Good	#144 Color Palette	#145 Rose Embroidery	#146 I Scream	#147 Pastel Pile-up	#148 Flare Everywhere	#149 Rastafari	#150 Back to the 70s	#151 Boogie Nights	#152 Hippie Mania
									
#153 Jade	#154 Blue Lips	#155 Sweet Side	#156 Marble Hue	#157 Ice Queen	#158 Rouge	#159 Pecan	#160 Sangria	#161 Bloody Mary	#162 Lipstick
									
#163 Kingsday	#164 Bubble Gum	#165 Sexy Grey	#166 Dark Dream	#167 Velvet	#168 Cozy Time	#169 Bachelorette	#170 Bronzing Star	#171 Cheers!	#172 Pillow Talk
									
#173 Tic Tac	#174 Holi Fusion	#175 Disco Dolly	#176 Carousel	#177 Flash Tattoo	#178 Candyfloss	#179 Sugar Sprinkle	#180 Grabber	#181 Booster	#182 Ghost House
									
#183 Black Ink	#184 Fervent	#185 Quizzical Denim	#186 Memories	#187 Light Latte	#188 Glitter Sweet	#189 Twinkle Little Princess	#190 Shine Bright	#191 Fairy Dust	#192 Shooting Star
									
#193 Rockstar	#194 Like a Diamond	#195 Golden Girl	#196 Sparkle by Night	#197 Moulin Rouge	#001 CATEYE Maine Coon	#002 CATEYE Chartreux	#003 CATEYE Persian	#004 CATEYE Birman	

- 15 ml bottle - Soakable -
Cure in 60 sec. LED and in 120 sec. UV -
Perfect coverage - Easy application





UPVOTED

◆◆◆ PERFECT POLISH ◆◆◆

DISPLAY



UPVOTED Perfect Polish Display



UPVOTED Cheek by Jowl Collection
WINTER 2019



UPVOTED a Cup of Cake Collection
SPRING 2020



◆◆◆ ACRYLIC ◆◆◆



NailPerfect Acrylic Powders

25 g / 100 g / 250 g

are medium to fast setting homo-polymers.

NailPerfect Premium Acrylic Powders offer an optimal balance between cure and set time.

Acrylic Powders are available in:



NailPerfect Acrylic Liquid

50 ml / 100 ml / 250 ml / 1000 ml

is designed to combine easy application with a superior finished product.



#8 Premium Acrylic Brush:

ideal for creating extremely deep smile lines, precise application around the cuticles, backfills and even the most complicated design work.

#8 Professional Acrylic Brush: Acrylic Design Brush:

#8 Oval brush, suitable for all acrylic applications.
perfect for creating acrylic designs.



NailPerfect Dipn'
25 gr

- Perfect manicure - Quick and easy to use - No mess
- No damage to natural nail bed - No primer needed - Non-yellowing
- Easily to remove in acetone in 15 minutes - Available in 50 colors!



NailPerfect Dipn'
Activator
15 ml



NailPerfect Dipn'
Sticky Base
15 ml



NailPerfect Dipn'
Remover
15 ml



NailPerfect Dipn'
Air Dry Top Coat
15 ml



NailPerfect Dipn'
Fast Dry Top Coat
15 ml

NAILPERFECT DIPPN' COLORCHART

#001 Soft White	#002 Clear	#003 Blush	#004 Cover Up	#005 Foundation
#006 Cover Pink	#007 Nude	#008 Girly Girly	#009 You Make Me Smile	#010 Ciao, Bella!
#011 Sour Peach	#012 The Gown	#013 Anemone	#014 Pinky Peach	#015 Orange Is The New Trend
#016 Going Dutch	#017 Neon Party	#018 Summer Vibes	#019 Cherry Blossoms	#020 Cheeks
#021 Chew Chew	#022 80's	#023 Blondes Just Wanna Have Fun	#024 She is a Doll	#025 The Party
#026 Pink Mood	#027 Good Vibes Only	#028 Innocence	#029 Flamingo Love	#030 Shine
#031 Playful Lila	#032 He Put A Spell On Me	#033 Lucky Charm	#034 My Favorite Pajamas	#035 Late Night
#036 Be Evil	#037 Dark Secrets	#038 Black On Black	#039 Jungle Sky	#040 Nova
#041 Baby Boy	#042 Rio	#043 Dolce Vita	#044 The Neighbours	#045 Green Mania
#046 Yeah-Lo	#047 Cold Lady	#048 She Is A Trouble	#049 Roll Out The Carpet	#050 I Do

◆◆◆ KITS ◆◆◆

SAMPLE KIT



Upvoted Sample Kit



LED/UV Sculpting Gel Sample Kit



Acrylic Sample Kit



Dippn' Sample Kit II

GET STARTED KIT



**Dippn'
Get Started Kit**



**UPVOTED
Get Started Kit**



**LED/UV Sculpting Gel
Get Started Kit**



**Acrylic
Get Started Kit**





NAILPERFECT™
PROFESSIONAL SYSTEMS

STUDENT KIT



Acrylic Student Kit



LED/UV Sculpting Gel Student Kit

FILES

◆◆◆ FORMS ◆◆◆

TOOLS



NailPerfect **Jumbo File**
150/180



NailPerfect **Sponge Buffer Jumbo File**
220/280



NailPerfect **Miracle Shine Files**
Jumbo 600/4000
Round 600/4000



NailPerfect **Sponge Buffer Round File**
100/180



NailPerfect **Halfmoon Files**
80/80, 100/100, 100/180
150/150, 180/180, 240/240



NailPerfect **Wood File**
180/180



NailPerfect
Salon Success Forms



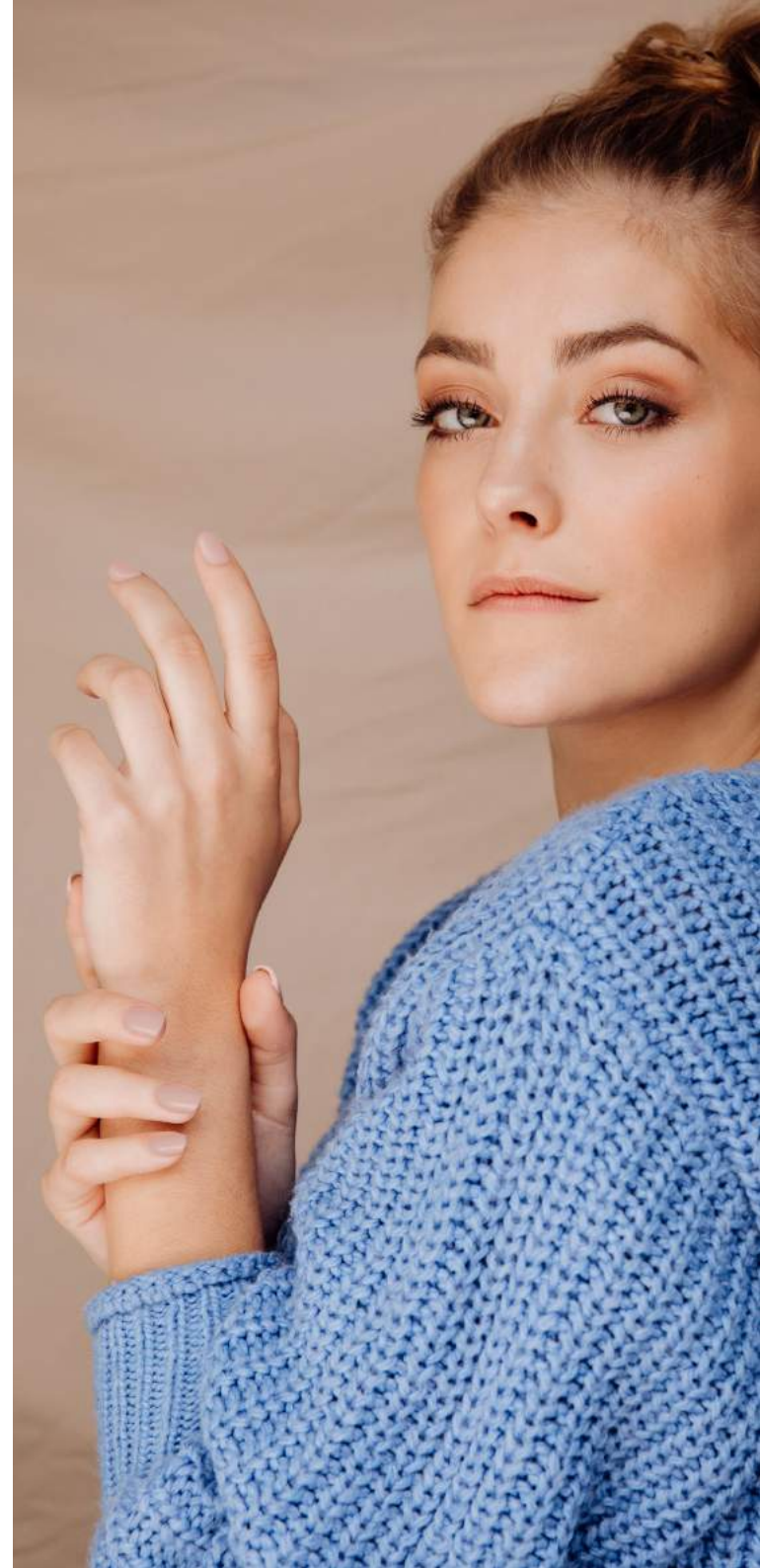
NailPerfect
Premium Forms



NailPerfect
Pinch Sticks



NailPerfect
Dotting Tool Set



◆◆◆ TREATMENT ◆◆◆



NailPerfect **Cuticle Oil Fishbowl**
48pcs 5ml

Peachy Delight and Almond 4 Ever.



NailPerfect **Cuticle Oil**
5 ml / 15 ml / 75 ml

is a great moisturizer and penetrates deep into the skin for healthy growing natural nails and cuticles.

Available in two scents:

Peachy Delight and Almond 4 Ever.

✚ MAGICAL nail healing



Magical Nail Healing Kit
15 ml

Today is the perfect day to give your nails a new start!
Limp nails, split or damaged nails? With this kit you have everything you need to boost and strengthen your nails. By applying these products consistently step by step, you will notice results within 8 days.



NailPerfect **Hand & Body Lotion**
60 ml / 250 ml

is a rich hand and body lotion which softens and conditions the skin.
Available in 4 scents: Peach, Aloe Vera, Pomegranate and Mandarin.

◆◆◆ MISCELLANEOUS ◆◆◆



NailPerfect Form Holder
Two sizes available: big and small



NailPerfect Apron



NailPerfect Brush On Nail Glue
5 gr
is a thin glue with a brush, can be used for application of tips, rhinestones and fiberglass/silk.



NailPerfect Table Mat



NailPerfect Design & Brush Organizer Case



NailPerfect Nail Glue
3 gr
is a thin glue for tips or rhinestones.



NailPerfect Towel
is small towel, convenient for many purposes.



NailPerfect Princess Diamond Dappendish
is designed for the nail technician to make their product application easier. The matching lid will help to eliminate excessive odor in the salon and no dust, caused by (electric) filing, will fall into the acrylic liquid. This Dappendish is stable so that it will not spill easily while the technician is working.





NAIL PERFECTTM

PROFESSIONAL SYSTEMS