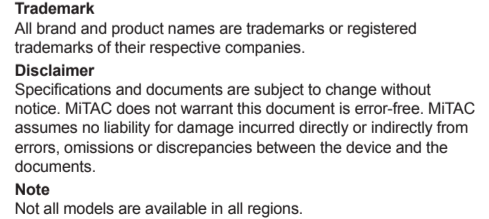
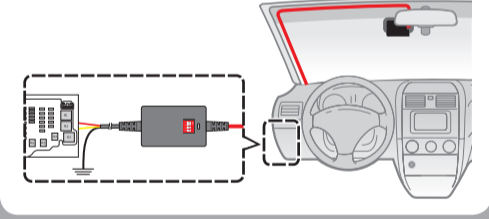
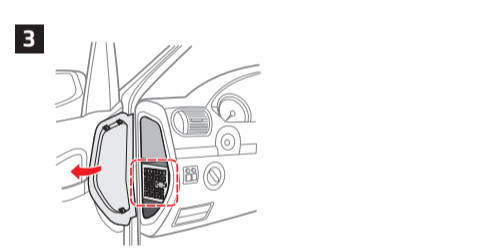
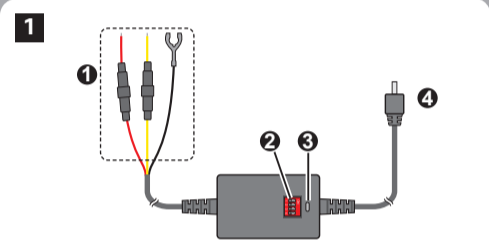


Installation Guide

Smart Box III



Trademark
All brand and product names are trademarks or registered trademarks of their respective companies.
Disclaimer
Specifications and documents are subject to change without notice. MITAC does not warrant this document is error-free. MITAC assumes no liability for damage incurred directly or indirectly from errors, omissions or discrepancies between the device and the documents.
Note
Not all models are available in all regions. Depending on the specific model purchased, the colour and look of your device and accessories may not exactly match the graphics shown in this document.
For regulatory identification purposes, the product is assigned a model number of NES1. Hereby, MITAC hereby certifies that it is in compliance with the essential requirements and other relevant provisions of Directive 2014/53/EU. Visit Mio website (www.mio.com) for the full text of the declaration for your device.
MITAC Europe Ltd. (Poland Branch)
ul. Piłsudskiego 65A, 02-801 Warszawa, PL

Introduction

Smart Box III provides power to your MiVue™ recorder by connecting with the constant power of the fuse terminal of your vehicle. It is very useful when you want to record the footage whilst driving. Smart Box III can prevent the discharge of the vehicle battery by blocking the electric power automatically as it checks the voltage and preset timer.

Precautions and notices

Rated input voltage: DC 12 - 24V, output current: 2A maximum

WARNING!
Do not use other than rated output voltage status. This product can only be used with vehicles that have DC 12 - 24V voltage. (Passenger car / RV, 12V, truck / bus, 24V)

- Follow the installation instructions or ask a specialist technician for assistance.
- There may be deviations in vehicle power voltages about vehicle battery status and usage environments.
- Never attempt to disassemble, repair or make any modifications to the product. Disassembling, modifying or any attempt to repair could cause damage to your device, may inflict bodily harm or damage to property and will void any warranty.
- You must use the product as intended. Misuses, neglect, accident or abuse will not cover the warranty, replacement or refund.
- Do not drop the product or subject it to severe shock.

1 Parts and functions

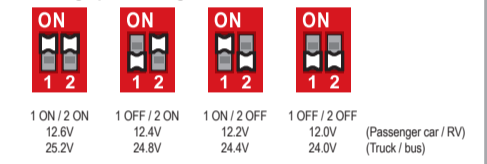
- Fuse cable**
 - ACC (red wire)
 - B+ (yellow wire)
 - GND (black wire)
- Setting switches**
Sets up the voltage and timer.
- LED indicator**
- Micro-USB connector**
Connects to the recorder.

2 Setting switches

Switch 1 and 2: Voltage setting switches
Switch 3 and 4: Timer setting switches

3 Installation and setup

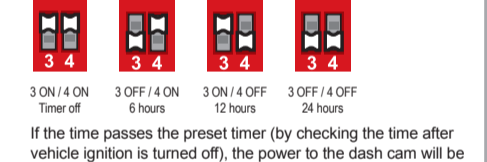
1. Set up the voltage and timer by adjusting the switches.
Setting up the voltage:



The Smart Box III is designed to power the dash cam by drawing power from the car's battery until it reaches a specific voltage limit. Once the car's battery falls lower than this level, the Smart Box III will automatically stop drawing power from the car's battery.

It is recommended to set the Smart Box III to 12.4V (for passenger car and RV) / 24.0V (for truck and bus), and only change it to the other setting option after checking with your car's manufacturer. Please contact your car's manufacturer and/or car's battery manufacturer for more information relating to the minimum battery voltage required for your vehicle.

Setting up the timer:



If the time passes the preset timer (by checking the time after vehicle ignition is turned off), the power to the dash cam will be disconnected automatically.

- Select either 6 / 12 / 24 hours to enable the uninterrupted power function of the Smart Box III and the dash cam will be powered even when the vehicle engine stops.
- If Timer off is selected, the uninterrupted power function of the Smart Box III will be disabled and the dash cam will be powered only when the vehicle engine is started.

2. Locate and open the fuse box inside of the vehicle.

Please note that the installation illustrations are for your reference only. The placement of the fuse box may vary depending on the vehicle model. If you encounter any problems during installation, it is recommended that you contact a skilled installer (for example, the service personnel of the vehicle) for assistance.

- Check and confirm the vehicle's voltage by using the electricity tester as battery voltages varies by vehicle. You must confirm your vehicle's voltage.

Use the electricity tester to locate the fuse from which the power is supplied when the vehicle is turned off, such as the emergency flashers, interior and door lights, etc. Connect the yellow wire (B+) to the fuse.

Use the electricity tester to locate the fuse from which the power is not supplied when the vehicle is turned off, such as the indicator lights. Connect the red wire (ACC) to the fuse.

The black wire (GND) must be connected to the metal part of a vehicle for use. This product may not work properly if you can use a screw to attach the black wire to the vehicle (Try to find a screw hole on any metal part).

Connect the Smart Box III to the dash cam and confirm it is working properly by the LED indicator that glows in red. Then you can arrange the cable and complete the installation.

You can route the cable through the top ceiling and the A-pillar so that it does not interfere with driving. Make sure that the cable installation does not interfere with the vehicle airbags or other safety features.

Connect the Smart Box III to the dash cam and confirm it is working properly by the LED indicator that glows in red. Then you can arrange the cable and complete the installation.

Connect the Smart Box III to the dash cam and confirm it is working properly by the LED indicator that glows in red. Then you can arrange the cable and complete the installation.

Въведение

Smart Box III предоставя захранване за Вашия рекордер MiVue™ чрез свързване с постоянна мощност на клемната кутия на Вашия автомобил. Много удобно е когато искате да записвате видео докато паркирате. Smart Box III може да предотврати изтощаване на автомобилния акумулатор чрез автоматично блокиране на електрическо захранване чрез проверка на напрежението и зададен таймер.

Предупреждения и уведомления

Номинално входно напрежение: DC 12 - 24 V, изходен ток: Максимум 2 A

ВНИМАНИЕ!
Не използвайте други, освен номиналното изходно напрежение. Този продукт може да бъде използван само с автомобилни, които са оборудвани с напрежение DC 12 - 24 V (Пасажирски автомобили / RV, 12 V, камион / автобус, 24 V)

- Следвайте инструкциите за инсталация или се обрънете към специализирани техник за помощ.
- Може да има отклонения в напрежението в захранването на автомобила за статуса на автомобилния акумулатор и средата на ползване.
- Никога не се опитвайте да разглобявате, ремонтирате или да модифицирате продукта. Разглобяването, модифицирането и опити за ремонт може да причинят повреда на устройството Ви, може да причинят наранявания или материални щети и ще отменят гаранцията.
- Трябва да използвате продукта по предназначение. Неправилната употреба, небрежността или злоупотребата не се покриват от гаранцията, смяна или възстановяване на цена.
- Do not drop the product or subject it to severe shock.

1 Част и функции

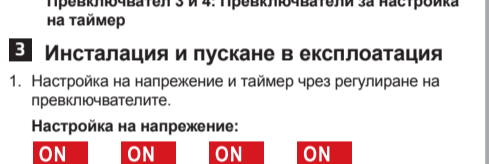
- Fuse cable**
 - ACC (Червен кабел)
 - B+ (Жълт кабел)
 - GND (Черен кабел)
- Setting switches**
Настройка напрежение и таймер.
- LED indicator**
- Micro-USB конектор**
Свързва рекордера.

2 Част и функции

Switch 1 and 2: Voltage setting switches
Switch 3 and 4: Timer setting switches

3 Инсталация и пускане в експлоатация

1. Настройте на напрежение и таймер чрез регулиране на превключвателите.
Настройка на напрежение:



The Smart Box III is designed to power the dash cam by drawing power from the car's battery until it reaches a specific voltage limit. Once the car's battery falls lower than this level, the Smart Box III will automatically stop drawing power from the car's battery.

It is recommended to set the Smart Box III to 12.4 V (for passenger car and RV) / 24.0 V (for truck and bus), and only change it to the other setting option after checking with your car's manufacturer. Please contact your car's manufacturer and/or car's battery manufacturer for more information relating to the minimum battery voltage required for your vehicle.

Setting up the timer:



If the time passes the preset timer (by checking the time after vehicle ignition is turned off), the power to the dash cam will be disconnected automatically.

- Select either 6 / 12 / 24 hours to enable the uninterrupted power function of the Smart Box III and the dash cam will be powered even when the vehicle engine stops.
- If Timer off is selected, the uninterrupted power function of the Smart Box III will be disabled and the dash cam will be powered only when the vehicle engine is started.

2. Locate and open the fuse box inside of the vehicle.

Please note that the installation illustrations are for your reference only. The placement of the fuse box may vary depending on the vehicle model. If you encounter any problems during installation, it is recommended that you contact a skilled installer (for example, the service personnel of the vehicle) for assistance.

- Check and confirm the vehicle's voltage by using the electricity tester as battery voltages varies by vehicle. You must confirm your vehicle's voltage.

Use the electricity tester to locate the fuse from which the power is supplied when the vehicle is turned off, such as the emergency flashers, interior and door lights, etc. Connect the yellow wire (B+) to the fuse.

Use the electricity tester to locate the fuse from which the power is not supplied when the vehicle is turned off, such as the indicator lights. Connect the red wire (ACC) to the fuse.

The black wire (GND) must be connected to the metal part of a vehicle for use. This product may not work properly if you can use a screw to attach the black wire to the vehicle (Try to find a screw hole on any metal part).

Connect the Smart Box III to the dash cam and confirm it is working properly by the LED indicator that glows in red. Then you can arrange the cable and complete the installation.

You can route the cable through the top ceiling and the A-pillar so that it does not interfere with driving. Make sure that the cable installation does not interfere with the vehicle airbags or other safety features.

Connect the Smart Box III to the dash cam and confirm it is working properly by the LED indicator that glows in red. Then you can arrange the cable and complete the installation.

Connect the Smart Box III to the dash cam and confirm it is working properly by the LED indicator that glows in red. Then you can arrange the cable and complete the installation.

Einleitung

Die Smart Box III versorgt Ihren MiVue™ Rekorder mit Strom, indem sie sie mit der Konstantstromsicherung Ihres Fahrzeugs verbindet. Es ist sehr nützlich, wenn Sie während des Parkens Video aufnehmen möchten. Die Smart Box III kann die Entladung der Autobatterie verhindern, indem der Stromfluss automatisch nach Überprüfung der Spannung und voreinstelltem Zeit blockiert wird.

Vorsichtsmaßnahmen und Hinweise

Nennleistungsspannung: DC 12 - 24 V, Ausgangsleistung: 2 A Maximum

Warnung!
Nicht verwenden als die Nennausgangsspannung verwenden. Dieses Produkt kann nur mit Fahrzeugen mit 12 - 24 V Gleichspannung verwendet werden. (Auto/RV: 12 V, LKW/Bus: 24 V)

- Folgen Sie der unten stehenden Anleitung oder bitten Sie einen Fachtechniker um Hilfe.
- Es können Unterschiede zwischen Stromspannungen hinsichtlich Batteriestatus und Einsatzumgebungen geben.
- Versuchen Sie nie, ihr Gerät zu demontieren, zu reparieren oder Veränderungen daran vorzunehmen. Demontage, Modifizierung oder ein Reparaturversuch könnte ihr Gerät beschädigen und sogar Körperverletzungen oder Sachschäden verursachen und führt zum Verlust der Garantie.
- Sie müssen das Produkt wie beschrieben verwenden. Unsachgemäße Nutzung, Vernachlässigung, Unfall oder Missbrauch werden nicht von der Garantie, Ersatz oder Erstattung gedeckt.
- Lassen Sie ihr Gerät nicht herunterfallen oder setzen Sie es keinem heftigen Stoß aus.

1 Teile und Funktionen

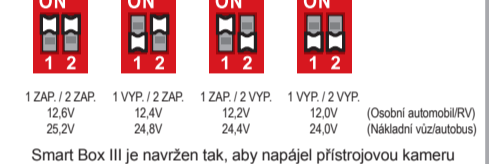
- Sicherungskabel**
 - CCA (cable rojo)
 - B+ (cable amarillo)
 - Toma de tierra (cable negro)
- Configuración de los interruptores**
Configura el voltaje y el temporizador.
- Indicador LED**
- Conector Micro-USB**
Se conecta a la grabadora.

2 Einstellungsschalter

Schalter 1 & 2: Spannungseinstellungsschalter
Schalter 3 & 4: Zeiteinstellungsschalter

3 Installation und Einrichtung

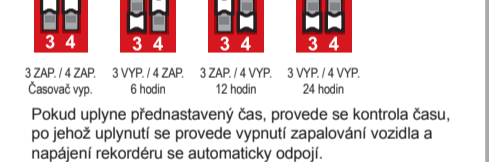
1. Stellen Sie die Spannung und Zeit durch Einstellen der Schalter ein.
Einstellung der Spannung:



The Smart Box III is designed to power the dash cam by drawing power from the car's battery until it reaches a specific voltage limit. Once the car's battery falls lower than this level, the Smart Box III will automatically stop drawing power from the car's battery.

It is recommended to set the Smart Box III to 12.4 V (pro osobni automobily a RV) / 24.0 V (pro nákladní automobily a autobusy) and only change it to the other setting option after checking with your car's manufacturer. Please contact your car's manufacturer and/or car's battery manufacturer for more information relating to the minimum battery voltage required for your vehicle.

Setting up the timer:



If the time passes the preset timer (by checking the time after vehicle ignition is turned off), the power to the dash cam will be disconnected automatically.

- Select either 6 / 12 / 24 hours to enable the uninterrupted power function of the Smart Box III and the dash cam will be powered even when the vehicle engine stops.
- If Timer off is selected, the uninterrupted power function of the Smart Box III will be disabled and the dash cam will be powered only when the vehicle engine is started.

2. Locate and open the fuse box inside of the vehicle.

Please note that the installation illustrations are for your reference only. The placement of the fuse box may vary depending on the vehicle model. If you encounter any problems during installation, it is recommended that you contact a skilled installer (for example, the service personnel of the vehicle) for assistance.

- Check and confirm the vehicle's voltage by using the electricity tester as battery voltages varies by vehicle. You must confirm your vehicle's voltage.

Use the electricity tester to locate the fuse from which the power is supplied when the vehicle is turned off, such as the emergency flashers, interior and door lights, etc. Connect the yellow wire (B+) to the fuse.

Use the electricity tester to locate the fuse from which the power is not supplied when the vehicle is turned off, such as the indicator lights. Connect the red wire (ACC) to the fuse.

The black wire (GND) must be connected to the metal part of a vehicle for use. This product may not work properly if you can use a screw to attach the black wire to the vehicle (Try to find a screw hole on any metal part).

Connect the Smart Box III to the dash cam and confirm it is working properly by the LED indicator that glows in red. Then you can arrange the cable and complete the installation.

You can route the cable through the top ceiling and the A-pillar so that it does not interfere with driving. Make sure that the cable installation does not interfere with the vehicle airbags or other safety features.

Connect the Smart Box III to the dash cam and confirm it is working properly by the LED indicator that glows in red. Then you can arrange the cable and complete the installation.

Connect the Smart Box III to the dash cam and confirm it is working properly by the LED indicator that glows in red. Then you can arrange the cable and complete the installation.

Introducción

La Smart Box suministra electricidad a su grabadora MiVue™ al conectarla a la alimentación constante de la fuente de fusible de voltaje constante. Es muy útil cuando desea grabar un video mientras estaciona su vehículo. Smart Box III puede prevenir la descarga de la batería de su vehículo bloqueando la fuente de electricidad automáticamente, ya que comprueba el estado de la batería y el temporizador preconfigurado.

Precauciones y avisos

Voltaje clasificado de entrada: DC 12 - 24 V CC, corriente de salida: 2 A máximo

ADVERTENCIA!
No use este producto con un voltaje superior al especificado. Este producto solo puede ser utilizado con vehículos que tienen un voltaje de 12 - 24 V CC. (Coche de pasajeros / RV: 12 V, camión/autobús: 24 V)

- Siga las instrucciones de instalación o consulte a un técnico especialista para obtener más asistencia.
- Puede haber desviaciones en los voltajes de alimentación de los vehículos relacionados con el estado de la batería del vehículo y los ambientes de uso.
- Nunca intente desmontar, reparar o modificar el producto. El desmontaje, modificación o cualquier intento de reparación podría causar daños a su equipo, provocar lesiones personales o dañar la propiedad, además de invalidar la garantía.
- No debe utilizar el producto sin su uso previsto. El uso incorrecto, negligencia, accidente o abuso no estarán cubiertos por la garantía, ni su sustitución o reembolso.
- No deje caer el producto al suelo ni que este caiga grandes golpes.

1 Partes y funciones

- Cable de fusible**
 - CCA (cable rojo)
 - B+ (rojo cable)
 - Toma de tierra (cable negro)
- Configuración de los interruptores**
Configura el voltaje y el temporizador.
- Indicador LED**
- Conector Micro-USB**
Se conecta a la grabadora.

2 Configuración de los interruptores

Interruptor 1 y 2: Interruptores de configuración del voltaje
Interruptor 3 y 4: Interruptores de configuración del temporizador

3 Instalación y Configuración

1. Configure el voltaje y el temporizador ajustando los interruptores.
Configuración del voltaje:



The Smart Box III is designed to power the dash cam by drawing power from the car's battery until it reaches a specific voltage limit. Once the car's battery falls lower than this level, the Smart Box III will automatically stop drawing power from the car's battery.

It is recommended to set the Smart Box III to 12.4 V (para camiones y autobuses), y solo puede cambiaria a otra opción de configuración después de haber consultado con el fabricante de su coche y/o el fabricante de la batería de su coche. Por favor, póngase en contacto con el fabricante de su coche y/o el fabricante de la batería de su coche para obtener más información relacionada con el voltaje mínimo de batería requerido para su vehículo.

Setting up the timer:



If the time passes the preset timer (by checking the time after vehicle ignition is turned off), the power to the dash cam will be disconnected automatically.

- Select either 6 / 12 / 24 hours to enable the uninterrupted power function of the Smart Box III and the dash cam will be powered even when the vehicle engine stops.
- If Timer off is selected, the uninterrupted power function of the Smart Box III will be disabled and the dash cam will be powered only when the vehicle engine is started.

2. Locate and open the fuse box inside of the vehicle.

Please note that the installation illustrations are for your reference only. The placement of the fuse box may vary depending on the vehicle model. If you encounter any problems during installation, it is recommended that you contact a skilled installer (for example, the service personnel of the vehicle) for assistance.

- Check and confirm the vehicle's voltage by using the electricity tester as battery voltages varies by vehicle. You must confirm your vehicle's voltage.

Use the electricity tester to locate the fuse from which the power is supplied when the vehicle is turned off, such as the emergency flashers, interior and door lights, etc. Connect the yellow wire (B+) to the fuse.

Use the electricity tester to locate the fuse from which the power is not supplied when the vehicle is turned off, such as the indicator lights. Connect the red wire (ACC) to the fuse.

The black wire (GND) must be connected to the metal part of a vehicle for use. This product may not work properly if you can use a screw to attach the black wire to the vehicle (Try to find a screw hole on any metal part).

Connect the Smart Box III to the dash cam and confirm it is working properly by the LED indicator that glows in red. Then you can arrange the cable and complete the installation.

You can route the cable through the top ceiling and the A-pillar so that it does not interfere with driving. Make sure that the cable installation does not interfere with the vehicle airbags or other safety features.

Connect the Smart Box III to the dash cam and confirm it is working properly by the LED indicator that glows in red. Then you can arrange the cable and complete the installation.

Connect the Smart Box III to the dash cam and confirm it is working properly by the LED indicator that glows in red. Then you can arrange the cable and complete the installation.

Introduction

La Smart Box suministra electricidad a su grabadora MiVue™ al conectarla a la alimentación constante de la fuente de fusible de voltaje constante. Es muy útil cuando desea grabar un video mientras estaciona su vehículo. Smart Box III puede prevenir la descarga de la batería de su vehículo bloqueando la fuente de electricidad automáticamente, ya que comprueba el estado de la batería y el temporizador preconfigurado.

Precauciones y avisos

Voltaje clasificado de entrada: DC 12 - 24 V CC, corriente de salida: 2 A máximo

ADVERTENCIA!
No use este producto con un voltaje superior al especificado. Este producto solo puede ser utilizado con vehículos que tienen un voltaje de 12 - 24 V CC. (Coche de pasajeros / RV: 12 V, camión/autobús: 24 V)

- Siga las instrucciones de instalación o consulte a un técnico especialista para obtener más asistencia.
- Puede haber desviaciones en los voltajes de alimentación de los vehículos relacionados con el estado de la batería del vehículo y los ambientes de uso.
- Nunca intente desmontar, reparar o modificar el producto. El desmontaje, modificación o cualquier intento de reparación podría causar daños a su equipo, provocar lesiones personales o dañar la propiedad, además de invalidar la garantía.
- No debe utilizar el producto sin su uso previsto. El uso incorrecto, negligencia, accidente o abuso no estarán cubiertos por la garantía, ni su sustitución o reembolso.
- No deje caer el producto al suelo ni que este caiga grandes golpes.

1 Partes y funciones

- Cable de fusible**
 - CCA (cable rojo)
 - B+ (rojo cable)
 - Toma de tierra (cable negro)
- Configuración de los interruptores**
Configura el voltaje y el temporizador.
- Indicador LED**
- Conector Micro-USB**
Se conecta a la grabadora.

2 Configuración de los interruptores

Interruptor 1 y 2: Interruptores de configuración del voltaje
Interruptor 3 y 4: Interruptores de configuración del temporizador

3 Instalación y Configuración

1. Configure el voltaje y el temporizador ajustando los interruptores.
Configuración del voltaje:



The Smart Box III is designed to power the dash cam by drawing power from the car's battery until it reaches a specific voltage limit. Once the car's battery falls lower than this level, the Smart Box III will automatically stop drawing power from the car's battery.

It is recommended to set the Smart Box III to 12.4 V (para camiones y autobuses), y solo puede cambiaria a otra opción de configuración después de haber consultado con el fabricante de su coche y/o el fabricante de la batería de su coche. Por favor, póngase en contacto con el fabricante de su coche y/o el fabricante de la batería de su coche para obtener más información relacionada con el voltaje mínimo de batería requerido para su vehículo.

Setting up the timer:



If the time passes the preset timer (by checking the time after vehicle ignition is turned off), the power to the dash cam will be disconnected automatically.

- Select either 6 / 12 / 24 hours to enable the uninterrupted power function of the Smart Box III and the dash cam will be powered even when the vehicle engine stops.
- If Timer off is selected, the uninterrupted power function of the Smart Box III will be disabled and the dash cam will be powered only when the vehicle engine is started.

2. Locate and open the fuse box inside of the vehicle.

Please note that the installation illustrations are for your reference only. The placement of the fuse box may vary depending on the vehicle model. If you encounter any problems during installation, it is recommended that you contact a skilled installer (for example, the service personnel of the vehicle) for assistance.

- Check and confirm the vehicle's voltage by using the electricity tester as battery voltages varies by vehicle. You must confirm your vehicle's voltage.

Use the electricity tester to locate the fuse from which the power is supplied when the vehicle is turned off, such as the emergency flashers, interior and door lights, etc. Connect the yellow wire (B+) to the fuse.

Use the electricity tester to locate the fuse from which the power is not supplied when the vehicle is turned off, such as the indicator lights. Connect the red wire (ACC) to the fuse.

The black wire (GND) must be connected to the metal part of a vehicle for use. This product

