

Instruction Manual

Premier Elite CO-W

Carbon monoxide detector with *Ricochet* mesh technology



1. What is carbon monoxide?

Carbon monoxide (CO) is a highly poisonous gas that has no taste, colour or smell.

Potential Sources of CO

- Wood-burning stoves
- Gas boilers and fires
- Gas Hobs
- Oil and coal burning appliances
- Portable gas heaters
- Blocked flues and chimneys
- Fumes from integral garages
- Barbecues

This CO alarm is no substitute for proper maintenance of your appliances.

Carbon monoxide can be produced from poorly burning appliances or from blocked flues and chimneys.

If your alarm has sounded and you have ventilated the room the CO may have dispersed before help arrives. It is crucial that the source of CO is determined and appropriate maintenance carried out.

Carbon monoxide is a cumulative poison meaning long-term exposure to low levels may cause symptoms.

The Premier Elite CO-W is time-weighted - the higher the level of CO, the sooner it will alarm.

2. Alarm levels as defined by EN50291-2010

The table below shows the response times at which the Premier Elite CO-W alarm will sound;

Alarm response times (as prescribed by EN 50291-1):	
CO Concentration	Alarm Delay
50 ppm	60 - 90 minutes
100 ppm	10 - 40 minutes
300 ppm	Less than 3 minutes

CO advice and information

The table below shows the effects of different levels of CO poisoning on the body;

Parts per million	Affects on adults
100 ppm	Slight headache, nausea, fatigue
200 ppm	Dizziness and headache within 2-3 hours
400 ppm	Nausea, frontal headache, drowsiness, confusion and rapid heart rate. Risk to life after over 3 hours of exposure
800 ppm	Severe headaches, convulsions, vital organ failures. Death possible within 2-3 hours

3. Mounting locations

Recommended locations	Not recommended
Install the alarm at a horizontal distance of between 1m and 3m from fuel burning appliances.	Do not install next to a door, window, extractor fan or air vent.
Away from draughts, such as doors and windows	Do not wall-mount close to obstructions (e.g. behind curtains, shelving or furniture)
Within hearing distance of bedrooms.* If a heating appliance is in the bedroom place the alarm at sleeping height	Do not fit in dusty, dirty or greasy areas (e.g. garages or workshops)
If wall-mounting, install at eye-level (approx 1.5m), and at least 30cm from adjoining walls or ceiling	Do not wall-mount within 30cm of the ceiling as this is a "dead air" space
If free-standing, the unit should be placed no more than 1 metre from the ground (to avoid permanent damage in case accidentally knocked)	Avoid humid (bathrooms), cold (< 4°C) or hot (>40°C) areas and away from sinks

*It is recommended that at least one Premier Elite CO-W carbon monoxide alarm is installed on each level of the home.

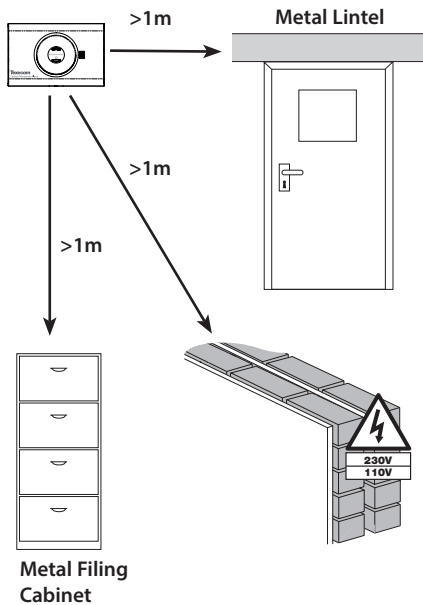


Texecom

MADE IN ENGLAND

INS672-2

4. Mounting location when connecting to alarm system

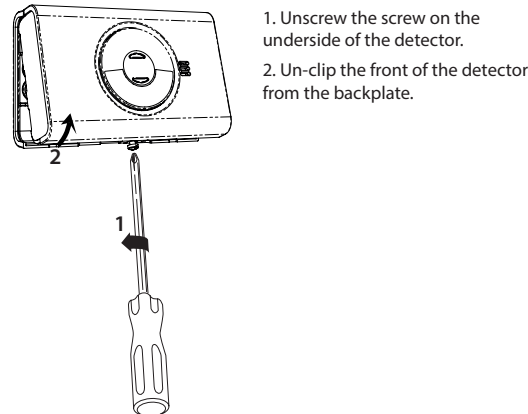


5. Learning the device to the alarm system (optional)

The CO-W operates either as a stand alone alarm or it can be connected to a Texecom Premier Elite wireless alarm system.

Do not insert the batteries until you are ready to learn the device to the system. Battery connection will automatically start the learning sequence. Device reverts back to programmed network if receiver is not in learn mode (when replacing battery). For wireless connectivity, detailed programming and system set-up instructions please refer to the compatible *Ricochet* technology enabled Premier Elite wireless expander/wireless control panel instructions. The Premier Elite CO-W is only compatible with Premier Elite control panels V3.01.02 and above. The CO-W has a tamper detection facility that will report to the Texecom alarm panel when the product has been opened.

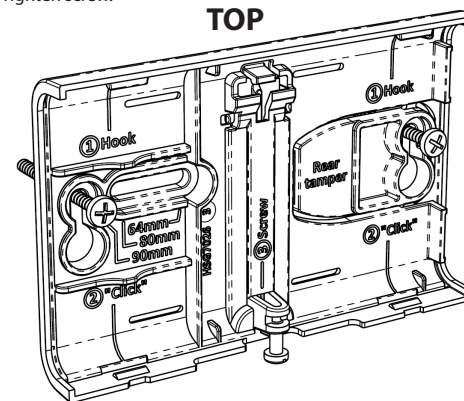
Opening the detector



6. Installing the detector - wall-mounting

NOTE: THIS ALARM MUST BE INSTALLED BY A COMPETENT PERSON AND IS TO BE INSTALLED ACCORDING TO THESE INSTRUCTIONS

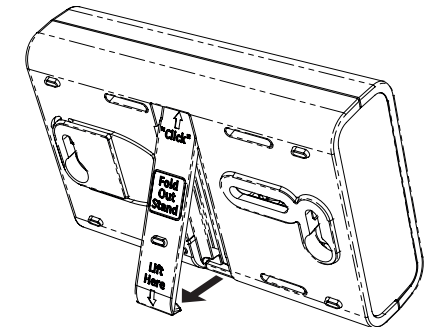
1. Drill two holes in a wall 9cm apart (you may wish to use the backplate for guidance).
2. Insert the two rawl-plugs, that are supplied, into the holes.
3. Insert the two screws as supplied into the holes ensuring enough of the screw sticks out of the wall (approx. 8mm).
4. Hook the rear over the screws (as shown below).
5. Tighten screws.
6. Hook in and clip on the front of the detector.
7. Tighten screw.



7. Installing the detector - free-standing

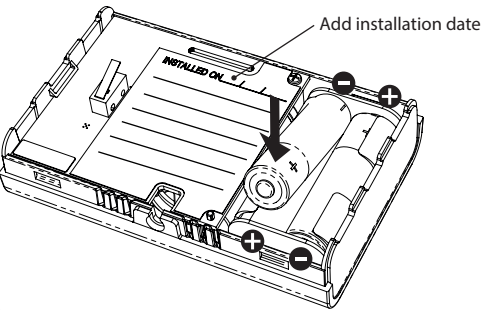
NOTE: THIS ALARM MUST BE INSTALLED BY A COMPETENT PERSON AND IS TO BE INSTALLED ACCORDING TO THESE INSTRUCTIONS

1. Lift out the stand, on the back of the detector, from the bottom and click into place (as shown below).
2. Position the detector no more than 1 meter from the floor (to minimize the risk of the detector being permanently damaged should it be knocked to the floor from a greater height).
3. Make sure the detector is in the upright position and not lying flat on the surface.



8. Battery installation/replacement

Remove the batteries from the pack and insert them into the battery compartment. Make sure that you fit the batteries in accordance with the polarity markings (+ or -) within the battery compartment.



9. Start-up sequence

The green light flashes every 2 seconds for the first minute. During this time the detector will perform a self-test. After this, the detector is working normally and the green light will flash every minute to indicate it has power. **DO NOT PUSH THE TEST BUTTON DURING THIS FIRST MINUTE.**

10. Low battery/fault sequence

The detector will emit a two-tone chirp every minute if the battery needs replacing or a fault has been detected within the unit. The detector is fully able to determine that it is working correctly. If, after fitting new batteries, the two-tone chirp continues then replace the

15. Warnings & important notices

WARNING: THIS CARBON MONOXIDE ALARM IS NOT A SUBSTITUTE FOR INSTALLING AND MAINTAINING AN APPROPRIATE NUMBER OF SMOKE ALARMS IN YOUR HOME. THIS ALARM WILL NOT SENSE SMOKE, FIRE, OR ANY POISONOUS GAS OTHER THAN CARBON MONOXIDE. FOR THIS REASON YOU MUST INSTALL SMOKE ALARMS TO PROVIDE EARLY WARNING OF FIRE AND TO PROTECT YOU AND YOUR FAMILY FROM FIRE AND ITS RELATED HAZARDS.

WARNING: THIS PRODUCT IS INTENDED FOR USE IN ORDINARY INDOOR RESIDENTIAL AREAS. IT IS NOT DESIGNED TO MEASURE COMPLIANCE WITH COMMERCIAL AND INDUSTRIAL STANDARDS. THIS ALARM IS NOT SUITABLE FOR INSTALLATION IN HAZARDOUS LOCATIONS. INDIVIDUALS WITH MEDICAL PROBLEMS MAY CONSIDER USING WARNING DEVICES WHICH PROVIDE AUDIBLE AND VISUAL SIGNALS FOR CARBON MONOXIDE CONCENTRATIONS UNDER 30 PPM.

IMPORTANT: THIS CARBON MONOXIDE ALARM IS DESIGNED TO DETECT CARBON MONOXIDE FROM ANY SOURCE OF COMBUSTION INCLUDING IMPROPER OR MALFUNCTIONING APPLIANCES. THE INSTALLATION OF THIS DEVICE SHOULD NOT BE USED AS A SUBSTITUTE FOR PROPER INSTALLATION, USE AND MAINTENANCE OF FUEL BURNING APPLIANCES INCLUDING APPROPRIATE VENTILATION AND EXHAUST SYSTEMS.

WARNING: THIS ALARM WILL NOT WORK WITHOUT POWER. THIS ALARM REQUIRES A CONTINUOUS SUPPLY OF POWER.

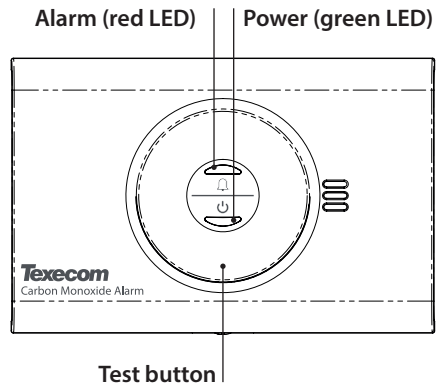
IMPORTANT: IF ANY FAULT SIGNALS OCCUR, CONTACT THE MANUFACTURER OR SUPPLIER AND DO NOT CONTINUE USING THE ALARM.

11. Test button sequence

The test button should be pressed every week. The detector will emit short chirps for about 5 seconds, and the green light will flash every 10 seconds for 4 minutes. During this time the detector will be more sensitive to detection of CO gas and will alarm at a lower concentration level. The detector will also generate a fault signal (two tone chirp every minute) if a fault is identified on the sensor. Further activation of the test button is disabled until the four minutes have expired.

12. Alarm sequence

On detecting an unsafe level of CO, the detector will sound 0.5s on, 0.5s off. The red light will flash once every two seconds.



WARNING: TAMPERING OR MODIFYING THIS DEVICE MAY RESULT IN THE PRODUCT MALFUNCTIONING AND NOT DETECTING CO GAS

WARNING: THE PRODUCT MAY NOT PREVENT THE CHRONIC EFFECTS OF CARBON MONOXIDE EXPOSURE AND THE APPARATUS WILL NOT FULLY SAFEGUARD INDIVIDUALS IDENTIFIED AT SPECIAL RISK

13. What to do in the event of an alarm



WARNING! Activation of the alarm indicates the presence of Carbon Monoxide (CO) which can kill you.

If the alarm sounds (0.5 seconds on, 0.5 seconds off and flashing red light):

- Keep calm and open the doors and windows to ventilate the property.
- Stop using all fuel burning appliances and ensure, if possible, that they are turned off.
- Evacuate the property leaving the doors and windows open.
- Get medical help immediately for anyone suffering the effects of carbon monoxide poisoning (headache, nausea), and advise that carbon monoxide poisoning is suspected.
- Ring your gas or other fuel supplier on their emergency number; keep the number in a prominent place.
- Write your fuel supplier's emergency number here (see below for more useful numbers):
- Do not re-enter the property until the alarm has stopped. When exposed to fresh air it can take up to 10 minutes for the sensor to clear and the alarm to stop depending on the level of carbon monoxide detected.
- Do not use the appliances again until they have been checked by an expert. In the case of gas appliances the engineer must be registered.

National Gas Emergency Service: **0800 111 999** (24 Hours)
Gas Safe Register: **0800 408 5500**

Specifications	
Supervisory Interval	15 minutes
Max current	100 mA
Alarm Current	70 mA
Supervisory Current	60 uA
Battery Life	4 years
Sensor Life:	10 years from date of installation.
Batteries:	2 x 1.5V Alkaline batteries (Duracell Plus Power MN1500)
Alarm Sound Level:	> 85 dB(A) at 1m
Operating temp.	-5°C to 55°C
Relative humidity	10 - 90% Non-condensing
Dimensions	111mm(W) x 72mm(H) x 31mm(D)
Weight (Inc Batteries)	150 g
Warranty	2 years (excluding batteries)
TYPE No.	GBYA1000

14. Maintenance of your alarm

- Test every week.
- Vacuum regularly to remove dust.
- Keep away from solvents or detergents and nappy buckets.
- Avoid spraying air-freshener, hair-spray near the alarm.
- Do not paint the alarm. If decorating or using adhesives close to the alarm, remove it temporarily.
- Annually check the installation date to see if the it's within sensor life (10 years). If not, replace the unit.

The following substances can affect the sensor and cause false alarms:
Methane, Propane, Iso-butane, Iso-propanol, Ethylene, Benzene, Toluene, Ethyl acetate, Hydrogen Sulphide, Hydrogen, Sulphur Dioxide, alcohol based products, paints, thinners, solvents, adhesives, hair-sprays, aftershave or perfumes and some cleaning agents.

Standards	
Alarm Systems:	EN50131-5-3, EN50131-1
EMC:	EN50130-4: ETSI EN301
R&TTE:	ETSI EN300-220
Environmental:	EN50130-5 Class II
Frequency Band:	868.2 to 868.6 Mhz
Receiver:	Category 1, Class 2
Receiver LBT (Listen Before Talk)	Yes
Transmitter Duty Cycle	868MHz<1%
Low Battery Signal	2.4V
Operating Voltage	3V

The Premier CO-W detector has been tested as compliant with EN50291-1 and certified by Intertek.



Regulatory information
Supplier: Texecom Ltd, St. Crispin Way, Haslingden, Lancashire, BB4 4PW, UK.

Weee Directive: 2012/19/EU (WEEE directive): Products marked with this symbol cannot be disposed of as unsorted municipal waste in the European Union. For proper recycling, return this product to your local supplier upon the purchase of equivalent new equipment, or dispose of it at designated collection points. For more information see: www.recyclethis.info.

Maintenance: Test yearly by the installer
Warranty: 2 year replacement warranty (excludes battery)

