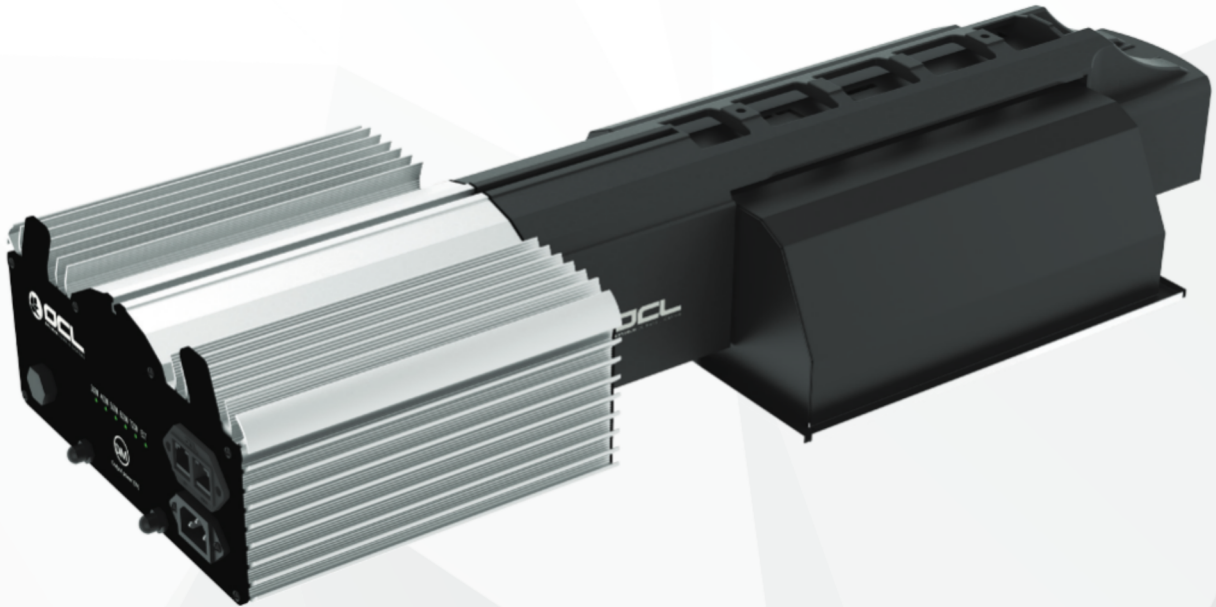


## OCL600W (208-240V) DATASHEET



### TECHNICAL SPECIFICATIONS - OCL 600W

(208-240V) BALLAST

**Input Voltage:** 190-265 Volt AC

**Rated input voltage:** 240 Volt AC  $\pm 10\%$

**Frequency:** 50-60 Hz

**Input current at 100%:** 2.70 Amps

**Input current at 120%:** 3.19 Amps

**Input power at 100%:** 645 Watt

**Input power at 120%:** 762 Watt

**Inrush current:** 30 Amps

**Power factor:** 0,98

**Product weight:** 6.0KG

**Package dimensions (LxWxH):** 78\*31\*19cm

**Temperature ambient:** 0-40(32-104 °F)

**Relative humidity:** <70%

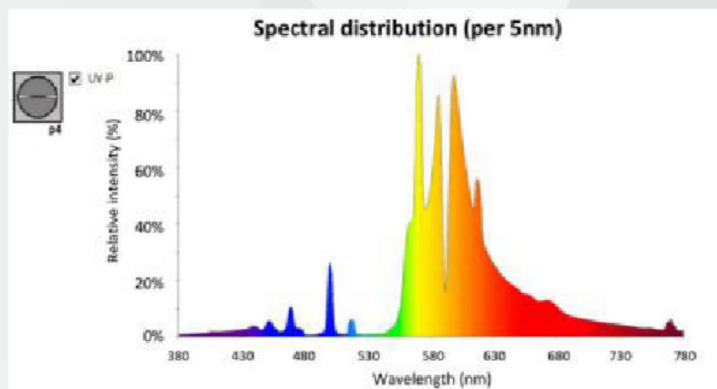
**Total Harmonic Distortion:** <10%

**Dimming:** 300/400/500/600/720W

**External dim connector:** RJ45

**BTU at 100%:** 1810

**Warranty:** 3 Years



# BTU TEST RESULT

|                      |  |               |                 |                   |                        |
|----------------------|--|---------------|-----------------|-------------------|------------------------|
| <b>EUT name:</b>     | OCL600W-HPS  | <b>Model:</b> | OCL600W X-SERIE | <b>Condition:</b> | 25.0°C,2m <sup>3</sup> |
| <b>Test require:</b> | Test in 2m <sup>3</sup> of space test temperature from ambient temperature to the temperature difference between the highest temperatures. |               |                 |                   |                        |
| <b>Test data:</b>    | Ambient: 25.141°C, max.:52.847°C, Temperature gradient:27.706K   |               |                 |                   |                        |
| <b>Note:</b>         | Need to according to the area corresponding to the number of lamps and lanterns control temperature to rise                                |               |                 |                   |                        |
| <b>Heat:</b>         | 1909187.22J/h = 1810 BTU   |               |                 |                   |                        |

**Remark:**  $Q=c \cdot m \cdot \Delta t$ .

Temperature to rise

