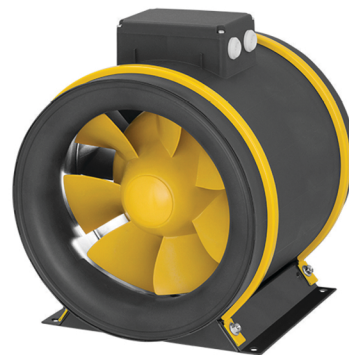
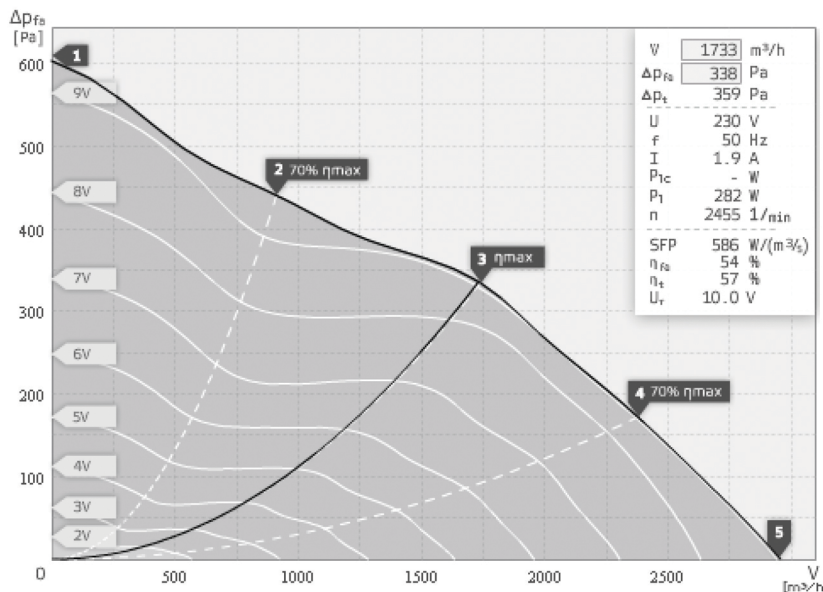




MAX-FAN PRO SERIES EC 315 - 2956 m³/h

TECHNICAL DATASHEET



- Diagonal impeller with stator
- EC-motor
- Integrated electronic
- Variable speed control
- Internal electronic temperature monitoring
- Plastic housing
- Including mounting bracket

Operating Point		1	2	3	4	5
Current I	A	1,8	1,8	1,9	1,9	1,9
Power Consumption P1	W	280	280	282	281	282
RPM n	1/min	2716	2786	2453	2455	2609
SPL inlet LWA5	dB(A)	82	80	77	76	79
SPL outlet LWA6	dB(A)	85	83	80	79	82
SPL casing break out LWA2	dB(A)	72	73	69	69	71

Sound power (LW) dB(A)		Medium Frequency Band								
		Σ	63	125	250	500	1k	2k	4k	8k
Inlet	LWA5	77	36	53	66	69	72	70	70	61
Outlet	LWA6	80	39	54	69	74	76	73	69	60
Casing	LWA2	68	39	39	49	57	68	54	44	34

EM 315 EC 01 130708	
Voltage UN	230 V 1~
Current Imax	2
Ambient Temperature tA	45 °C
Medium Temperature tM	45 °C
Speed Control	0-10V
Motor Protection	TEC
Isolation Class	F
Weight	6,9 kg

