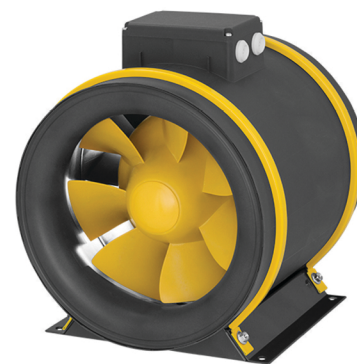
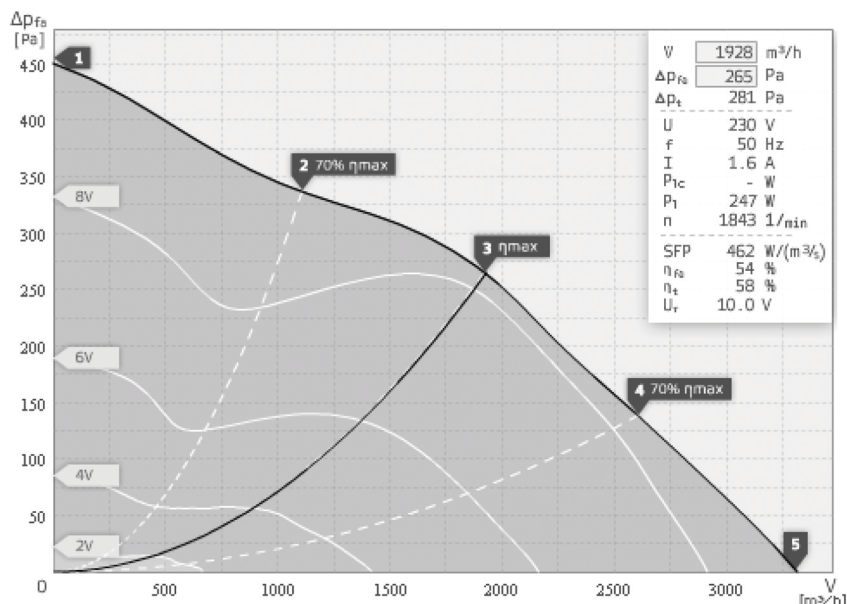




MAX-FAN PRO SERIES EC 355 - 3308 m³/h

TECHNICAL DATASHEET



- Diagonal impeller with stator
- EC-motor
- Integrated electronic
- Variable speed control
- Internal electronic temperature monitoring
- Plastic housing
- Including mounting bracket

Operating Point		1	2	3	4	5
Current I	A	1,7	1,7	1,6	1,7	1,7
Power Consumption P1	W	254	261	247	249	257
RPM n	1/min	2069	2159	1844	1877	2023
SPL inlet LWA5	dB(A)	80	78	73	72	75
SPL outlet LWA6	dB(A)	83	81	76	74	78
SPL casing break out LWA2	dB(A)	66	64	63	63	62

EM 355 EC 01 130712	
Voltage UN	230 V 1~
Current I _{max}	1,8
Ambient Temperature t _A	35 °C
Medium Temperature t _M	35 °C
Speed Control	0-10V
Motor Protection	TEC
Isolation Class	F
Weight	8,7 kg

Sound power (LW) dB(A)		Medium Frequency Band								
		Σ	63	125	250	500	1k	2k	4k	8k
Inlet	LWA5	72	31	50	59	68	67	66	65	55
Outlet	LWA6	75	33	50	63	70	72	68	66	57
Casing	LWA2	62	30	35	47	59	60	46	40	31

