

LED Mirror

INSTALLATION AND OPERATING INSTRUCTION



(One Style for Reference)

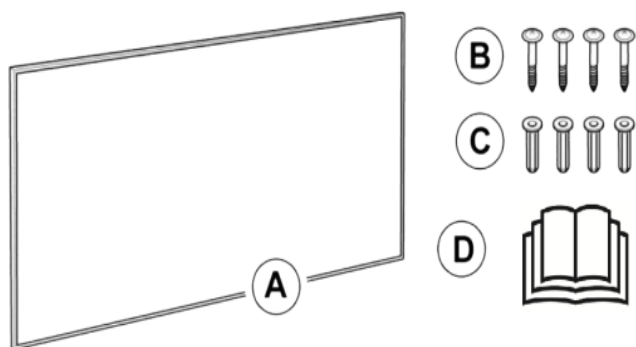
READ BEFORE USE

- Thank you for purchasing this led mirror.
- Please read the instructions carefully before attempting to install, operate or service the product.
- Please retain this booklet for future reference.
- Pictures for reference only, subject to our available products

CONTENTS

Product Introduction	1
Safety Introduction	1
Installation	4
Operation	5
Maintenance	5
Troubleshooting	6
Warranty	6

SCOPE OF DELIVERY



A: LED Mirror × 1

B: Screw × 4

C: Dowel × 4

D: Manual × 1

PRODUCT INTRODUCTION

This LED mirror is a bathroom wall mirror with some utility functions include touch control switch, LED light, or defogging function etc . Users can select the product with different functions according to the different needs. Please ignore the related operating instructions in this booklet if you didn't subscribe some functions.

SAFETY INTRODUCTION

Read this manual carefully before starting or using the device. Always store the manual in the immediate vicinity of the device or its site of use!



Warning

Do not ceiling mount those devices designed for wall only!
Or else it may cause burning, fire and falling off risk!



Warning

This appliance can be used by children aged from 8 years and above and persons with reduced physical, sensory or mental capabilities or lack of experience and knowledge if they have been given supervision or instruction concerning use of the appliance in a safe way and understand the hazards involved.
Children shall not play with the appliance. Cleaning and user maintenance shall not be made by children without supervision.



Warning

Children of less than 3 years should be kept away unless continuously supervised.
Children aged from 3 years and less than 8 years shall only switch on/off the appliance provided that it has been placed or installed in its intended normal operating position and they have been given supervision or instruction concerning use of the appliance in a safe way and understand the hazards involved.
Children aged from 3 years and less than 8 years shall not plug in, regulate and clean the appliance or perform user maintenance.



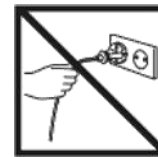
Warning

Do not use the device in small rooms if persons are present who cannot leave the room independently and who are not under constant supervision.

- Remove all the blue protective films(both on the front and on the back) before using.
- Be sure the usage voltage is between 110-240V, 50Hz, and power supply has been strictly in accordance with IEC, left is null wire and right is live wire, and also well grounded.

- Do not use the device in potentially explosive rooms.
- Do not use the device in aggressive atmosphere.
- Set the device up in an upright and stable position.
- Do not expose the device to directly squirting water.
- Never insert any objects or limbs into the device.
- Do not cover or transport the device during operation.
- Do not sit on the device.
- This appliance is not a toy! Keep away from children and animals. Do not leave the device unattended during operation.
- Check accessories and connection parts for possible damage prior to every use of the device. Do not use any defective devices or device parts.
- Ensure that all electric cables outside of the device are protected from damage (e.g. caused by animals). Never use the device if electric cables or the power connection are damaged!
- The electrical connection must be according to the specifications in chapter Technical data.
- Insert the mains plug into a properly secured mains socket.
- Do not use the device when the socket or wire overloaded.
- Observe the device's power input, cable length and intended use when selecting extensions to the power cable. Completely unroll extension cables. Avoid electrical overload.
- Before carrying out maintenance, care or repair work on the device, remove the mains plug from the mains socket. Hold onto the mains plug while doing so.
- Do not under any circumstances use the device if you detect damages on the mains plug or power cable. If the supply cord is damaged, it must be replaced by the manufacturer, its service agent or similarly qualified persons in order to avoid a hazard. Defective power cables pose a serious health risk.
- During the installation of the device observe the minimum distances from walls and other objects as well as the storage and operating conditions specified in the Technical data chapter.
- Never drill into the heating device.
- Do not use the device once any damage found on the glass or mirror surface.
- Do not use the device in immediate proximity to curtains.

- Do not place the device on combustible ground.
- Do not transport the device during operation.
- Do not touch the surface during the device working to avoid burns.
- Allow the device to cool down before transport and / or maintenance work.
- Do not use this device near bathtubs, shower trays, swimming pools or other water containers. Risk of electric shock!
- The device must be placed where the switches and controllers cannot be touched by a person in a bathtub or shower.
- Do not use this device in a child-care centre and bathroom.(Only for Sweden)
- Do not place any objects, e.g. clothing, on the device.
- Do not use the device outdoors. Do not place the device on wet or flooded ground.
- Do not unplug by pulling on the cable. To unplug, grasp the plug, not the cable.
- Do not stretch the cable or place the cable under strain.



Keep cable away from heated surfaces.

- Do not run the cable under carpeting. Do not cover the cable with throw rugs, runners, or similar coverings. Do not route the cable under furniture or appliances. To avoid a tripping hazard arrange the cable away from traffic areas so that it will not be tripped over.
- Do not use on soft surfaces, such as a bed, where openings may become blocked.
- Keep combustible materials, such as furniture, pillows, bedding, papers, clothes and curtains, at least 0.9m (3 feet) from the front of the appliance and keep them away from the sides and rear when the appliance is plugged in.
- If there is a loose fit between the plug and the socket or the plug becomes very hot, the socket may need to be replaced. Check with a qualified electrician to replace the socket.
- Turn off all controls before unplugging. Unplug before connecting any tool or accessory.
- Allow the device to cool down before transport or maintenance work.
- Do not privately disassemble the device or replace parts, otherwise it may cause mechanical failure, electric shock, fire or body injury.
- The warranty is not applicable for the product fault caused by private disassembly.

! Warning:

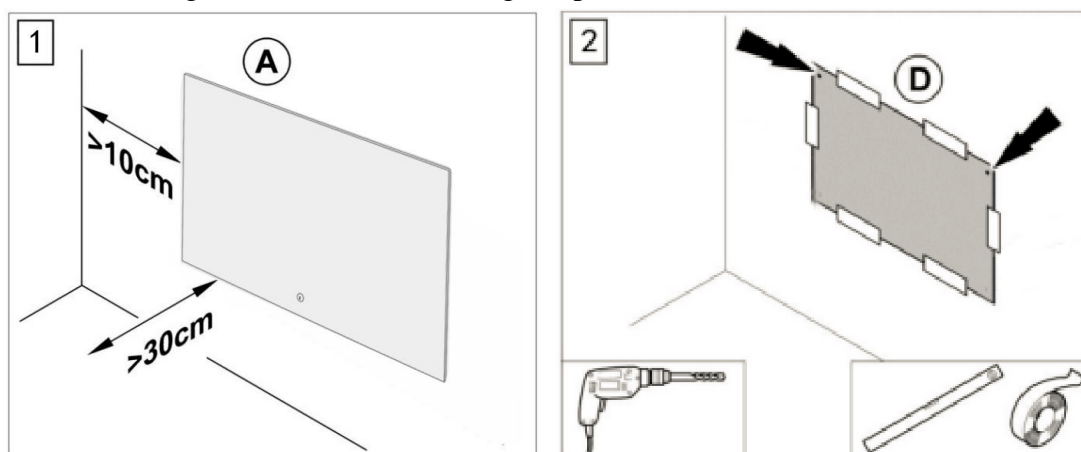
Do not cover.

Insert the mains plug into an outlet that is properly installed and grounded.

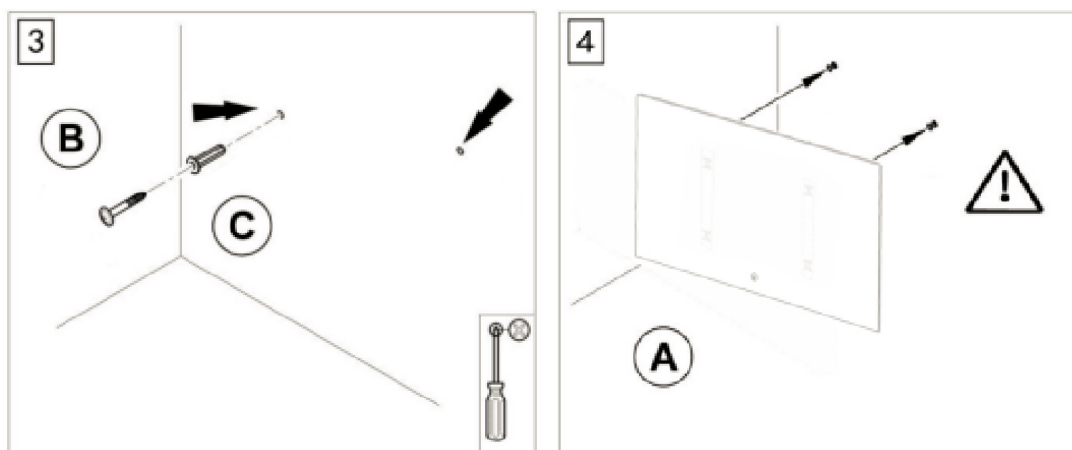
Do not locate directly below a mains electricity supply socket.

INSTALLATION

- (1) Choose the mounting position, keep the required minimum distances;
- (2) Mark the positions for the bore holes onto the drilling template (D) if there are no existing marks. Stick the drilling template on the wall;



- (3) Drill the holes. Insert the screws into the dowels and fasten the screws. The screws should protrude approx. 1.5 cm from the dowels;
- (4) Tear off the back protective film, Hang the mirror (A) on the screws and move it to one direction.



Note: please tear off the front and back protective film once you start using the device.

OPERATION

START-UP:

1. Check if the power cord is intact.
2. Check if the power supply voltage is consistent. (*The power socket is required to have a grounding terminal and good grounding performance.*)
3. Whether the power cord plug and socket are matched, and make sure your socket power supply match the product input power voltage.

FUNCTIONAL OPERATING INSTRUCTIONS:

1. Plug in power, the backlight of the touch button is in the active (lighted white) status (if it has touch control switch a the front of the mirror).
Single-click the touch button, the surrounding LED lights up; Single-click again, the light goes off. (*If the LED lighting is not selected when ordering, click the touch button is invalid*)
2. Long press the touch button to turn on the heating or defogging function, the white backlight of the touch button changes to blue; Long press again to turn off heating/defogging. (*If the function of heating or defogging is not selected when ordering, Long press the touch button is invalid*)

MAINTENANCE

- The appliance must be switched off and unplugged before taking regular cleaning. Otherwise, it may cause electric shock..
- The appliance needed only external cleaning and care regularly.
- Please use some medicinal alcohol clean the surface with damped soft cloth. Never clean it under running water. Do not use thinner, toluene, benzene, acidic/alcoholic cleaning agents, or any chemical clothes on the appliance.
- After regular care and cleaning, well pack it into the original packing box, then put it to dry and cool environment for storage.
- Wind and keep dry the cable when not in use.

TROUBLESHOOTING

The device has been checked for proper functioning several times during production. If malfunction occur nonetheless, check the device according to the following list.

Problem	Reason	Measure
The touch button does not light	The device does not start	1) Check the power connection 2) Use fingerprints instead of fingertips
The surface bulges slightly	The material expands due to heating	It's a normal process. No measure are required.

Warranty Card

NAME _____ TEL _____

ADD _____

MODEL _____ ORDER NO. _____

Date _____

Failure Description
