

FRANKLY
AMSTERDAM





OFF SHORE

Available as	Rug, Outdoor Rug
Design	Frankly Amsterdam
Size	Maximum width 5 meter, infinite length
Technique	Handwoven
Colors	6 standard + 19 uni
Color design	Christiane Müller
Delivery Time	6 Weeks
Material	100% Polypropylene
Endings	Blind
Advantages	+ Suitable for outdoor use + European production + any size possible + maximum width 3,5 meters + suitable for residential as well as soft contract

Off Shore is part of our outdoor collection. The rug owes its name to the wave-like pattern in its structure. A structure, that is made up of only two players: the warp and the weft. The warp of the rug, made of natural jute, plays a crucial role in the creation of this repeat by holding its thick outdoor weft in its place. The various thicknesses in each tile creates a depth in the rug, making it rich and heavy with quality.

The color range is made by our colorist Christiane Müller. She designed a range that is true to the friendly and flowing character of the rug, whilst keeping a low-key presence to be proposed in many different outdoor environments.



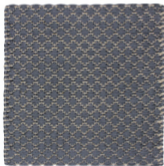
5401



5402



5403



5404



5405



5406

CARE INSTRUCTIONS

- We recommend regular (monthly) cleaning of the outdoor rug.
- **Vacuum** the rug with a normal (upright or cylinder) vacuum cleaner without the brush or beater bar engaged. Avoid vacuuming over 1200W.
- After vacuuming, you can use cold water with a pH neutral soap or a non-ionic detergent to remove all dirt on both sides of the rug. Dry the rug in the sun afterwards.
- **Stains** need to be removed as soon as possible. Absorb the stain using a strong absorbing paper (like kitchen paper) or a clean cloth.
- Remove stains using pH neutral soap or dish soap and scrub it gently with warm water.
- Do not use highly acidic cleaning agents to remove stains from your rug. This can cause discoloration of the yarn.
- In case of **heavy staining** we advise you to always have your rug cleaned by a specialist in rug cleaning.
- To avoid the rug getting moldy hang or lay down the rug in sunlight on a clean surface. For the rug to be completely dry, alternate the sides.

- If you would like to **storage** your outdoor rug you need to clean it properly first. Make sure you never fold your rug. You have to roll it up, wrap it in plastic and secure it with tape for example.
- When in **doubt**, please don't hesitate to contact us, or take a look on our website, www.frankly.amsterdam/careinstructions, for more information.

WARRANTY

- Frankly Amsterdam **guarantees** its rugs for 2 years of normal use.
- All our products are made with care. In case a **manufacturing defect** escaped our attention, please inform us within 14 days after delivery and leave the product unused.
- Small differences or **irregularities** in color, weft or size may occur. This is inherent to the use of the yarn fibers and has to be accepted when within normal commercial tolerances.
- Frankly Amsterdam will not accept any complaint if shading is concerned.

