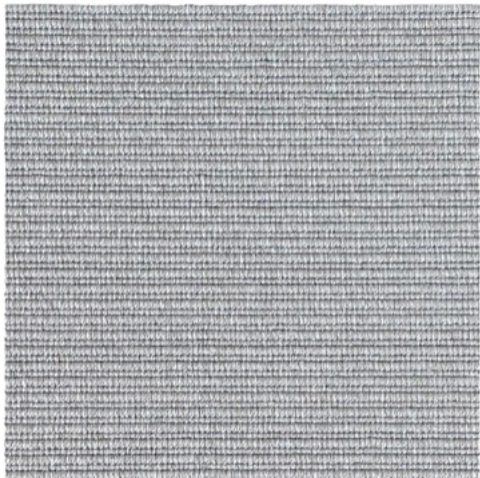


FRANKLY
AMSTERDAM



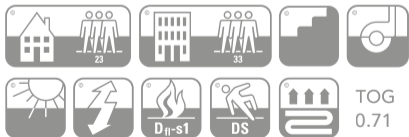


DAY OFF

Manufacturing	Flatwoven
Pile surface	Loop pile
Material	100% Recycled PET
Carpet weight	± 2.600 g/m
Carpet thickness	± 4 mm
Backing	P.P. + Latex
Fire classification	Dfl-s1
Colors	4 standard
Delivery time	1 - 6 weeks
Advantages	+ suitable for indoor and outdoor use + suitable for residential and contract + available as wall-to-wall, rug and stair runner + waterproof and UV proof + easy cleaning, even with bleach + castor proof
Installation	Click here for instructions

This flat woven beauty is the perfect example of form meets function. Made from recycled plastic bottles, Day Off is your environmentally friendly solution for indoor as well as outdoor living. Thanks to its strong and long-lasting yarn, it is very easy to clean with fibers that are water resistant and meet the UV resistance requirements. Above all these amazing aspects, Day Off is soft to the touch, providing a similar visual effect of traditional natural flatwovens without the disadvantages of it.

Please note that your order will be cut from a roll of 2 meters or 4 meters width. Please include the cutting loss in your order. If you need any help calculating this, we are glad to be of service.



Classification EN 1307:2014 and EN 14041:2004



7201



7202



7203



7204

CARE INSTRUCTIONS

- We advise you to **vacuum** the the carpet once or twice a week for domestic applications and light use areas. For commercial applications and heavier traffic use, daily vacuuming is advised to reduce the presence and buildup of loose dirt particles.
- For flat weave carpets use a suction only vacuum to prevent distortion or pilling of the carpet surface. Do not use the brush or beater bar.
- While vacuuming, the starting point should be varied each time to make sure that the carpet is not always brushed in the same direction.
- **Wet stains** need to be removed immediately, before the yarn absorbs the fluid. Absorb the stain using a strong absorbing paper (like kitchen paper) or clean towel.
- **High traffic area stains** from castor wheels, luggage and service trollies may result in rubber transfer markings. Rubber markings may become sticky or attract dirt from foot and wheeled traffic builds up on the original stain. Remove rubber from the fibres using an approved gel type solvent. The treated area must be thoroughly rinsed out otherwise any remaining residue will continue to attract dirt.
- **Light stains** can be treated with JAMES cleaning agents, which have been tested on our products. Please follow the instructions of the JAMES staindisc, also shown on our site. We can not guarantee safe use

- of cleaning agents by any other brand, since they have not been tested.
- In case of **heavy staining** or transferred dirt, we advise you to always have your rug cleaned by a specialist in rug cleaning.
- To avoid the carpet getting moldy while using **outdoor**, hang or lay down the rug in sunlight on a clean surface.
- When you **storage** the outdoor carpet (during cold or rainy seasons) it must be cleaned properly first. Roll up the carpet on a tube, wrap it in plastic and secure it with tape. Never fold the carpet while storing it.
- When in **doubt**, please don't hesitate to contact us.

WARRANTY

- Frankly Amsterdam **guarantees** its carpets for 2 years of normal use.
- All our products are made with care. In case a **manufacturing defect** escaped our attention, please inform us within 14 days after delivery and leave the product unused.
- Small differences or **irregularities** in color, weft or size may occur. This is to be accepted when within normal commercial tolerances.

