

FRANKLY
AMSTERDAM





AFTER NOON

Available as	Curtain
Width	330 cm
Direction	↕
Turnable	Yes
Type	In-between
Composition	85% Polyester, 15% Linen
Colors	12 Standard: 1, 2, 3, 4, 5, 6, 7, 8, 9, 10, 11, 12

Care instructions

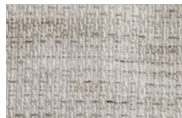


Note

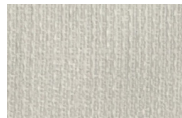
+ dry cleaning is advised
+ due to different yarn dye lots a slight variation
in color tone may occur

Airy. Flowing. Textured. After Noon's woven fabric makes for a unique in-between curtain with an interesting structure and medium transparency. Woven in a cross hatching pattern from both linen and polyester results in a subtle melange color.

After Noon is custom made for you by skilled hands in the heart of Italy with a width of 330 cm.



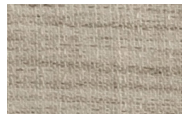
01



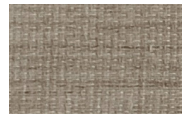
02



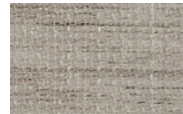
03



04



05



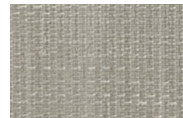
06



07



08



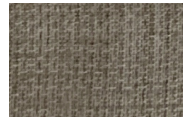
09



10



11



12

CARE INSTRUCTIONS

- Professional dry cleaning of the curtain fabrics is advised.
- Before cleaning the curtains dust them. Either with the vacuum brush attachment on a low setting or shake them out.
- Cold wash the curtains at 30°C without spin or centrifuge cycle.
- Do not rub or wring fabric after washing.
- All fabrics can be ironed on low temperature and steam ironed.
- When in **doubt**, please don't hesitate to contact us, or take a look on our website, www.frankly.amsterdam/careinstructions, for more information.



Dry cleaning is advised

WARRANTY

- Frankly Amsterdam **guarantees** its curtains for 2 years of normal use.
- All our products are made with care. In case a **manufacturing defect** escaped our attention, please inform us within 14 days after delivery and leave the product unused.

- Small differences or **irregularities** in color or size may occur. This is inherent to the use of these fibers, in particular linen, and has to be accepted when within normal commercial tolerances.
- Frankly Amsterdam will not accept any complaint if shading is concerned.

