

FRANKLY  
AMSTERDAM

SUSTAINABILITY



Here at Frankly Amsterdam we do things differently, and have been from the start.  
Our products have honest origins. Production takes place in decent places by genuine people.

We're thinking about the future, which is why our collection of rugs,  
curtains and throws are produced in Europe from quality, natural materials.



INDEX

This is an interactive file  
by clicking on a product image you will go directly to the right page in this file  
by clicking on our logo you will go back to this index



RUGS

**Bamboo**  
Day Light  
Day Light Pattern  
Night Fire  
Show Off  
Show Off Gradient

**Wool**  
At Ease  
Bottom Line  
Eagle Eye  
Mile Stone

**Eucalyptus**  
At Ease  
At Random  
Bottom Line  
Chasing Light  
Colour Me  
Mile Stone  
Move Slow  
Night Fire  
Perfect Match  
Think Big

**Merino**  
Saint Cloud

**Mohair**  
Corner Stone  
Land Mark  
Second Nature  
Mohair  
Show Off  
Show Off Gradient  
Super Moon  
Think Big  
Un Fold



CONTRACT

**Recycled PET**  
Day Off  
Easy Going  
Good Life  
High Tide

**Recycled Plastic**  
On Return  
  
**Eucalyptus**  
Done Deal

**Wool**  
Done Deal  
Roll Over  
Step Up 9  
Step Up 16



CURTAINS

**Recycled Cotton**  
Mind Full  
Re Cover  
True Story



THROWS

**Cashmere**  
Come Over  
Fine Line  
Settle In  
Soft Space

FRANKLY  
AMSTERDAM

RUGS



AT EASE COLLECTION  
By Frankly Amsterdam



MATERIAL STUDY



AT EASE 3303  
Hand tufted  
50% Eucalyptus, 50% wool  
35 mm (or custom height)  
10 Standard colors, custom colors from our Eucalyptus and Wool color box  
Any size and shape possible

RUG SPECIFICATIONS:  
Pile: 50% Eucalyptus 50% Wool  
Yarn origin: Europe, New Zealand  
Latex: Luxury contract latex  
Backing: 100% pes

ABOUT EUCALYPTUS  
+ It is one of the most sustainable processes of fiber-production to this day.  
+ Woodpulp comes from European forests that are strictly managed according to FSC certificate.  
+ The Eucalyptus fiber is completely biodegradable.  
+ The land used for Eucalyptus is unsuitable for food crops, so there's no competition with the food-industry.  
+ The production of Eucalyptus uses only 2,8% water compared to the production of cotton.  
+ The production process of Eucalyptus is a nearly closed loop process, where the the water involved in the production is recycled during manufacturing, and the finishing agents are fully biodegradable.  
+ The dyeing of the Eucalyptus yarn is 100% ecological.

ABOUT WOOL  
+ Our Wool yarn is recovered strictly from sheep living in Europe and New Zealand.  
+ The Wool fiber is completely biodegradable.  
+ Wool is a renewable product. After the sheering of the sheep, their Wool fleece just grows back. In fact, the sheep needs to be sheered for their own well-being.  
+ The sheering of the sheep is done in an animal friendly manner.  
+The dyeing of our wool yarn is 100% ecological.

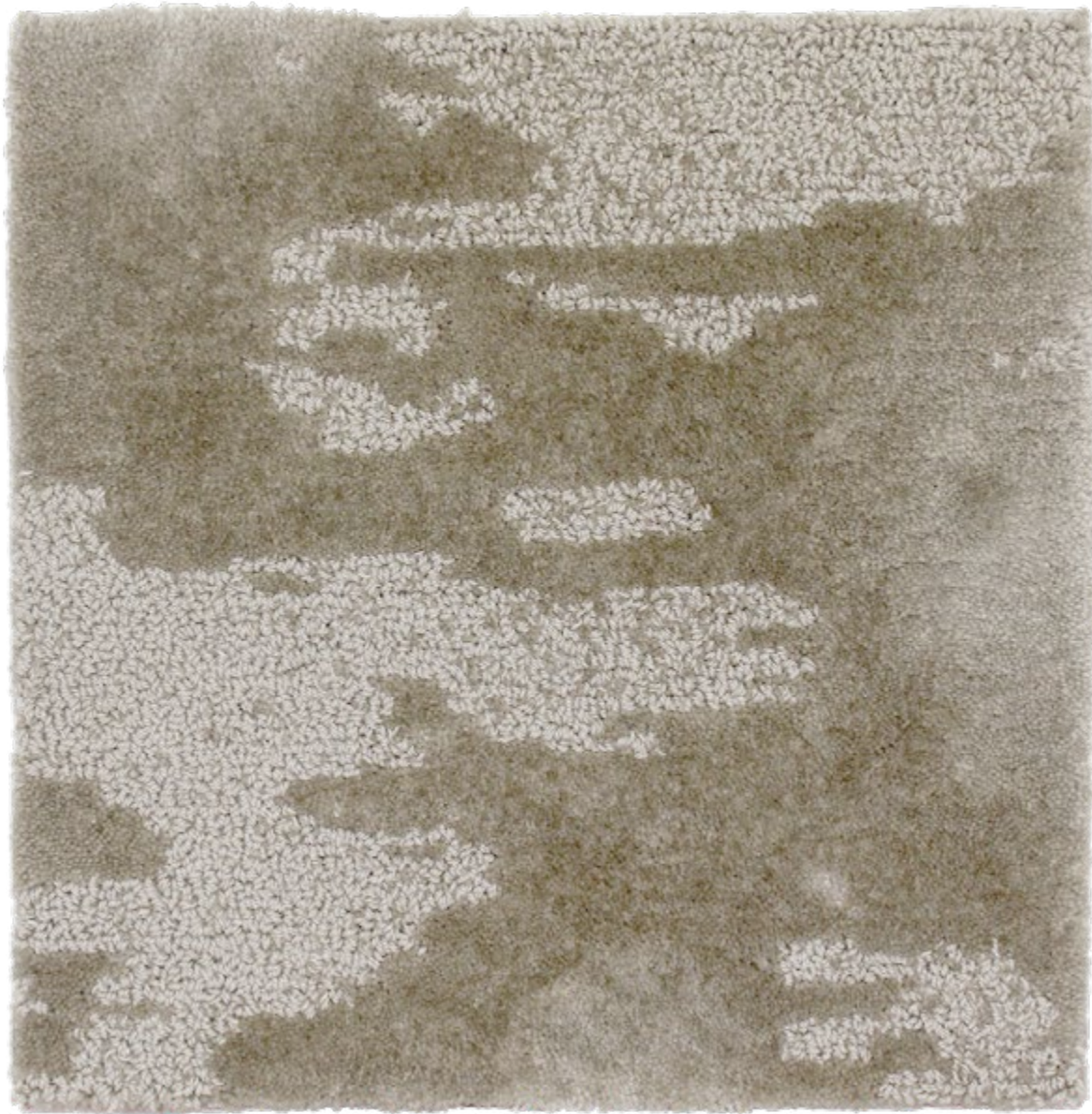
CERTIFICATES  
NP EN ISO 9001:2008 certified by TUV Rheinland  
Burning classification - EN 13501-1:2010 - Cfl-s1  
Luxury Class - LC 5 (Prestige)  
Forest Stewardship Council (FSC) certified



AT RANDOM COLLECTION  
By Frankly Amsterdam



MATERIAL STUDY



AT RANDOM 2304

Hand tufted  
100% Thick Eucalyptus  
8 mm cut and loop pile  
8 Standard colors, custom colors from our Eucalyptus color box  
Any size and shape possible

RUG SPECIFICATIONS:  
Pile: 100% Thick Eucalyptus  
Yarn origin: Europe  
Latex: Luxury contract latex  
Backing: 100% pes

ABOUT EUCALYPTUS  
+ It is one of the most sustainable processes of fiber-production to this day.  
+ Woodpulp comes from European forests that are strictly managed according to FSC certificate.  
+ The Eucalyptus fiber is completely biodegradable.  
+ The land used for Eucalyptus is unsuitable for food crops, so there's no competition with the food-industry.  
+ The production of Eucalyptus uses only 2,8% water compared to the production of cotton.  
+ The production process of Eucalyptus is a nearly closed loop process, where the water involved in the production is recycled during manufacturing, and the finishing agents are fully biodegradable.  
+ The dyeing of the Eucalyptus yarn is 100% ecological.

CERTIFICATES  
NP EN ISO 9001:2008 certified by TUV Rheinland  
Burning classification - EN 13501-1:2010 - Cfl-s1  
Luxury Class - LC 5 (Prestige)  
Forest Stewardship Council (FSC) certified



CHASING LIGHT COLLECTION  
By Frankly Amsterdam



MATERIAL STUDY



CHASING LIGHT 2903  
Hand tufted  
100% Eucalyptus  
8 - 10 mm cut and loop pile  
6 Standard colors, custom colors from our Eucalyptus color box  
Any size and shape possible

RUG SPECIFICATIONS:  
Pile: 100% Eucalyptus  
Yarn origin: Europe  
Latex: Luxury contract latex  
Backing: 100% pes

ABOUT EUCALYPTUS  
+ It is one of the most sustainable processes of fiber-production to this day.  
+ Woodpulp comes from European forests that are strictly managed according to FSC certificate.  
+ The Eucalyptus fiber is completely biodegradable.  
+ The land used for Eucalyptus is unsuitable for food crops, so there's no competition with the food-industry.  
+ The production of Eucalyptus uses only 2,8% water compared to the production of cotton.  
+ The production process of Eucalyptus is a nearly closed loop process, where the the water involved in the production is recycled during manufacturing, and the finishing agents are fully biodegradable.  
+ The dyeing of the Eucalyptus yarn is 100% ecological.

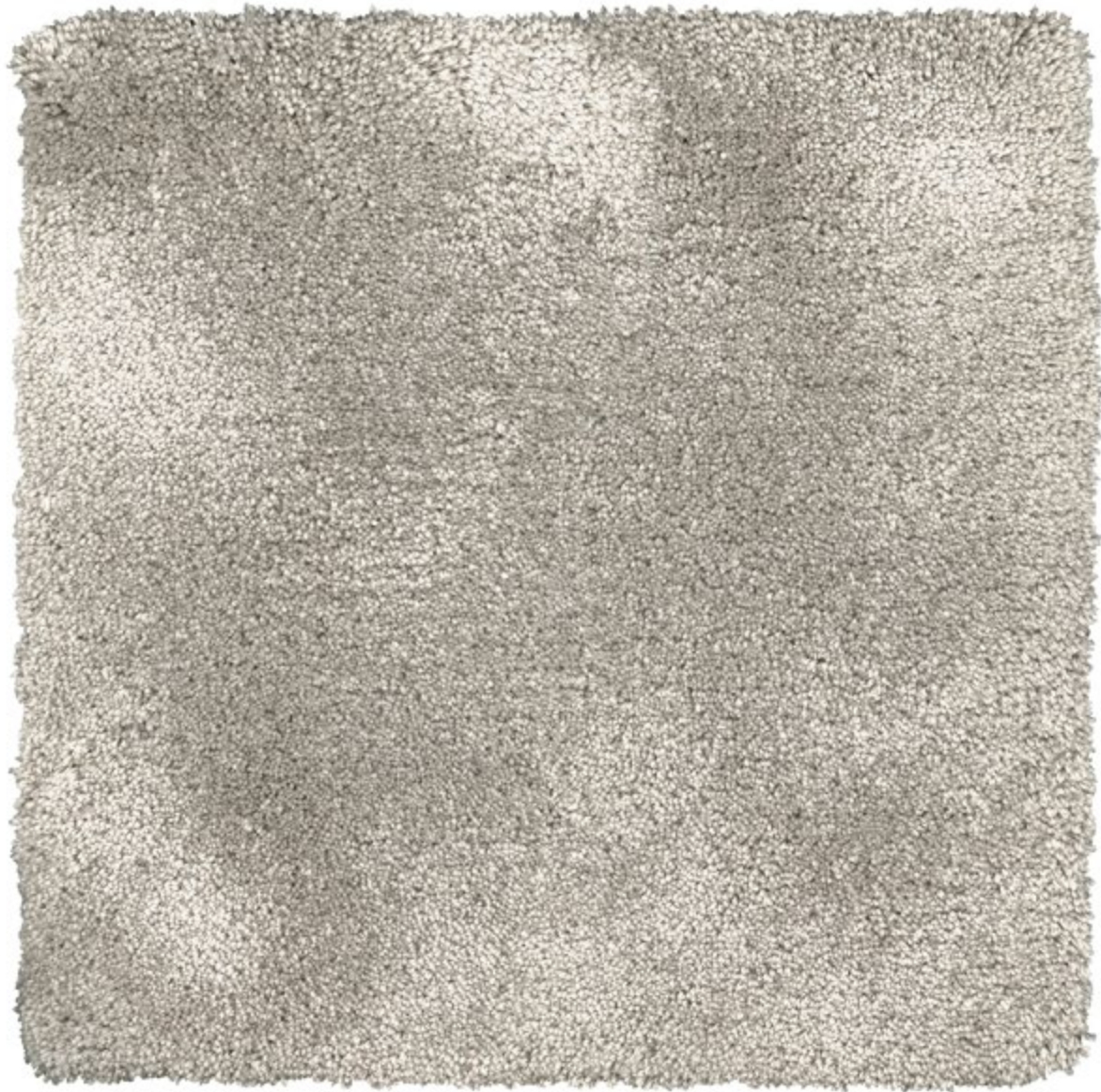
CERTIFICATES  
NP EN ISO 9001:2008 certified by TUV Rheinland  
Burning classification - EN 13501-1:2010 - Cfl-s1  
Luxury Class - LC 5 (Prestige)  
Forest Stewardship Council (FSC) certified



COLOUR ME COLLECTION  
By Frankly Amsterdam



MATERIAL STUDY



COLOUR ME 3901

Hand tufted  
100% Thick Eucalyptus  
16 mm or custom height

9 Standard colors, custom colors from our Eucalyptus color box (marked with \* symbol)  
Any size and shape possible

RUG SPECIFICATIONS:

Pile: 100% Thick Eucalyptus  
Yarn origin: Europe  
Latex: Luxury contract latex  
Backing: 100% pes

ABOUT EUCALYPTUS

- + It is one of the most sustainable processes of fiber-production to this day.
- + Woodpulp comes from European forests that are strictly managed according to FSC certificate.
- + The Eucalyptus fiber is completely biodegradable.
- + The land used for Eucalyptus is unsuitable for food crops, so there's no competition with the food-industry.
- + The production of Eucalyptus uses only 2,8% water compaired to the production of cotton.
- + The production process of Eucalyptus is a nearly closed loop process, where the the water involved in the production is recycled during manufacturing, and the finishing agents are fully biodegradable.
- + The dyeing of the Eucalyptus yarn is 100% ecological.

CERTIFICATES

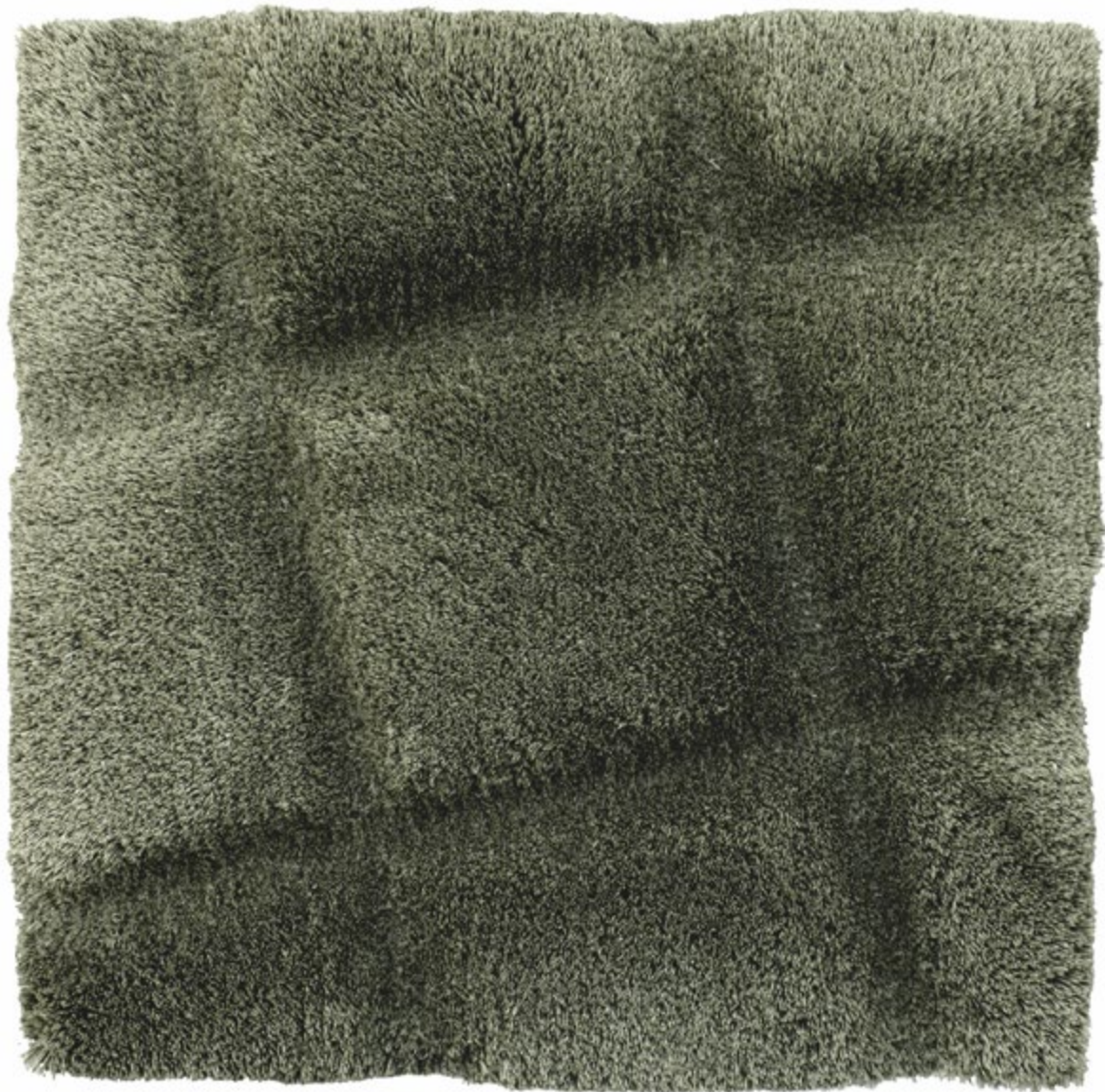
NP EN ISO 9001:2008 certified by TUV Rheinland  
Burning classification - EN 13501-1:2010 - Cfl-s1  
Luxury Class - LC 5 (Prestige)  
Forest Stewardship Council (FSC) certified



CORNER STONE COLLECTION  
By Frankly Amsterdam



MATERIAL STUDY



CORNER STONE 4503  
Hand tufted in 3D  
100% Mohair  
12 - 25 mm  
8 Standard colors, custom colors from our Mohair color box  
Any size and shape possible

RUG SPECIFICATIONS:

Pile: 100% Mohair

Yarn origin: Europe

Latex: Luxury contract latex

Backing: 100% pes

ABOUT MOHAIR

+ The Mohair fiber is completely biodegradable.

+ Mohair is, like virgin wool, a renewable product. After the sheering of the goat, its fleece just grows back. In fact, the goats need to be sheered for their own well-being.

+ The sheering of the goat is done in an animal friendly manner.

+ The dyeing of our Mohair yarn is 100% ecological.

CERTIFICATES

NP EN ISO 9001:2008 certified by TUV Rheinland

Burning classification - EN 13501-1:2010 - Bfl-s1

Luxury Class - LC 5 (Prestige)



DAY LIGHT COLLECTION  
By Frankly Amsterdam



MATERIAL STUDY



DAY LIGHT 6710  
Hand tufted  
100% Bamboo  
14 mm (or custom height)  
10 Standard colors, custom colors from our Bamboo color box  
Any size and shape possible

RUG SPECIFICATIONS  
Pile: 100% Bamboo  
Yarn origin: Europe  
Latex: Luxury contract latex  
Backing: 100% pes

ABOUT BAMBOO  
+ Bamboo yarn is environmental friendly.  
It comes from a natural and sustainable source.  
+ During growth the soil and roots aren't disturbed which is great for soil health.  
+ It is a renewable source and the fastest growing woody plant on our planet.  
+ It releases abundant oxygen into the atmosphere.  
+ The dyeing of our Bamboo yarn is eco-friendly.

CERTIFICATES  
NP EN ISO 9001:2008 certified by TUV Rheinland  
Burning classification - EN 13501-1:2010 - Bfl-s1



DAY LIGHT PATTERN COLLECTION  
by Frankly Amsterdam



MATERIAL STUDY



DAY LIGHT PATTERN A

Hand tufted  
100% Bamboo  
14 - 18 mm  
10 Standard colors, custom colors from our Bamboo color box  
Any size and shape and pattern possible. Choose your own pattern centerpoint

RUG SPECIFICATIONS

Pile: 100% Bamboo  
Yarn origin: Europe  
Latex: Luxury contract latex  
Backing: 100% pes

ABOUT BAMBOO

- + Bamboo yarn is environmental friendly.
- It comes from a natural and sustainable source.
- + During growth the soil and roots aren't disturbed which is great for soil health.
- + It is a renewable source and the fastest growing woody plant on our planet.
- + It releases abundant oxygen into the atmosphere.
- + The dyeing of our Bamboo yarn is eco-friendly.

CERTIFICATES

NP EN ISO 9001:2008 certified by TUV Rheinland  
Burning classification - EN 13501-1:2010 - Bfl-s1



LAND MARK COLLECTION  
By Frankly Amsterdam



MATERIAL STUDY



LAND MARK 4403  
Hand tufted in 3D  
100% Mohair  
12 - 25 mm  
8 Standard colors, custom colors from our Mohair color box  
Any size possible based on circles of 54 cm

RUG SPECIFICATIONS:

Pile: 100% Mohair

Yarn origin: Europe

Latex: Luxury contract latex

Backing: 100% pes

ABOUT MOHAIR

+ The Mohair fiber is completely biodegradable.

+ Mohair is, like virgin wool, a renewable product. After the sheering of the goat, its fleece just grows back. In fact, the goats need to be sheered for their own well-being.

+ The sheering of the goat is done in an animal friendly manner.

+ The dyeing of our Mohair yarn is 100% ecological.

CERTIFICATES

NP EN ISO 9001:2008 certified by TUV Rheinland

Burning classification - EN 13501-1:2010 - Bfl-s1

Luxury Class - LC 5 (Prestige)



MOON PARTS

By Art-in-Return and Frankly Amsterdam



DETAIL



MOON PARTS 8601

Hand tufted in 3D  
100% Wool  
12 - 45 mm & 12 mm border  
1 standard color, custom color from our Wool box  
170x255cm, 200x300cm, 235x350cm, 300x450cm  
or any other size within the same ratio

RUG SPECIFICATIONS

Pile: 100% Wool  
Yarn origin: Europe, New Zealand  
Latex: Luxury contract latex  
Backing: 100% pes

ABOUT WOOL

- + Our Wool yarn is recovered strictly from sheep living in Europe and New Zealand.
- + The Wool fiber is completely biodegradable.
- + Wool is a renewable product. After the sheering of the sheep, their Wool fleece just grows back. In fact, the sheep needs to be sheered for their own well-being.
- + The sheering of the sheep is done in an animal friendly manner.
- +The dyeing of our wool yarn is 100% ecological.

CERTIFICATES

NP EN ISO 9001:2008 certified by TUV Rheinland  
Burning classification - EN 13501-1:2010 - Bfl-s1  
Luxury Class - LC 5 (Prestige)



MOVE SLOW COLLECTION  
By Frankly Amsterdam



MATERIAL STUDY



MOVE SLOW 3503  
Hand tufted  
100% Eucalyptus  
16 mm (or custom height)  
8 Standard colors, custom colors from our Eucalyptus color box  
Any size and shape possible

RUG SPECIFICATIONS:

Pile: 100% Eucalyptus

Yarn origin: Europe

Latex: Luxury contract latex

Backing: 100% pes

ABOUT EUCALYPTUS

+ It is one of the most sustainable processes of fiber-production to this day.

+ Woodpulp comes from European forests that are strictly managed according to FSC certificate.

+ The Eucalyptus fiber is completely biodegradable.

+ The land used for Eucalyptus is unsuitable for food crops, so there's no competition with the food-industry.

+ The production of Eucalyptus uses only 2,8% water compared to the production of cotton.

+ The production process of Eucalyptus is a nearly closed loop process, where the water involved in the production is recycled during manufacturing, and the finishing agents are fully biodegradable.

+ The dyeing of the Eucalyptus yarn is 100% ecological.

CERTIFICATES

NP EN ISO 9001:2008 certified by TUV Rheinland

Burning classification - EN 13501-1:2010 - Cfl-s1

Luxury Class - LC 5 (Prestige)

Forest Stewardship Council (FSC) certified



NIGHT FIRE COLLECTION  
By Frankly Amsterdam



MATERIAL STUDY



NIGHT FIRE 5508  
Hand tufted  
65% Eucalyptus, 35% Bamboo  
16 mm (or custom height)  
8 Standard colors, custom colors from our Eucalyptus & Bamboo color box  
Any size and shape possible

RUG SPECIFICATIONS:  
Pile: 65% Eucalyptus, 35% Bamboo  
Yarn origin: Europe  
Latex: Luxury contract latex  
Backing: 100% pes

ABOUT EUCALYPTUS  
+ It is one of the most sustainable processes of fiber-production to this day.  
+ Woodpulp comes from European forests that are strictly managed according to FSC certificate.  
+ The Eucalyptus fiber is completely biodegradable.  
+ The land used for Eucalyptus is unsuitable for food crops, so there's no competition with the food-industry.  
+ The production of Eucalyptus uses only 2,8% water compared to the production of cotton.  
+ The production process of Eucalyptus is a nearly closed loop process, where the water involved in the production is recycled during manufacturing, and the finishing agents are fully biodegradable.  
+ The dyeing of the Eucalyptus yarn is 100% ecological.

ABOUT BAMBOO  
+ Bamboo yarn is environmental friendly.  
It comes from a natural and sustainable source.  
+ During growth the soil and roots aren't disturbed which is great for soil health.  
+ It is a renewable source and the fastest growing woody plant on our planet.  
+ It releases abundant oxygen into the atmosphere.  
+ The dyeing of our Bamboo yarn is eco-friendly.

CERTIFICATES  
NP EN ISO 9001:2008 certified by TUV Rheinland  
Burning classification - EN 13501-1:2010 - Bfl-s1



PERFECT MATCH COLLECTION  
By Frankly Amsterdam



MATERIAL STUDY



PERFECT MATCH 2002  
Hand tufted  
80% Eucalyptus, 20% natural wool  
12 mm  
8 Standard colors, custom colors from our Eucalyptus & Wool color box  
Any size and shape possible

RUG SPECIFICATIONS:  
Pile: 80% Eucalyptus, 20% Wool  
Yarn origin: Europe, New Zealand  
Latex: Luxury contract latex  
Backing: 100% pes

ABOUT EUCALYPTUS  
+ It is one of the most sustainable processes of fiber-production to this day.  
+ Woodpulp comes from European forests that are strictly managed according to FSC certificate.  
+ The Eucalyptus fiber is completely biodegradable.  
+ The land used for Eucalyptus is unsuitable for food crops, so there's no competition with the food-industry.  
+ The production of Eucalyptus uses only 2,8% water compared to the production of cotton.  
+ The production process of Eucalyptus is a nearly closed loop process, where the water involved in the production is recycled during manufacturing, and the finishing agents are fully biodegradable.  
+ The dyeing of the Eucalyptus yarn is 100% ecological.

ABOUT WOOL  
+ Our Wool yarn is recovered strictly from sheep living in Europe and New Zealand.  
+ The Wool fiber is completely biodegradable.  
+ Wool is a renewable product. After the sheering of the sheep, their Wool fleece just grows back. In fact, the sheep needs to be sheered for their own well-being.  
+ The sheering of the sheep is done in an animal friendly manner.  
+The dyeing of our wool yarn is 100% ecological.

CERTIFICATES  
NP EN ISO 9001:2008 certified by TUV Rheinland  
Burning classification - EN 13501-1:2010 - Cfl-s1  
Luxury Class - LC 5 (Prestige)  
Forest Stewardship Council (FSC) certified



SAINT CLOUD COLLECTION  
By Frankly Amsterdam



MATERIAL STUDY



SAINT CLOUD 5803

Hand tufted  
100% Merino wool  
18 mm (or custom height) in shaven or unshaven finish  
7 Standard colors  
Any size and shape possible

RUG SPECIFICATIONS:

Pile: 100% Merino  
Yarn origin: Europe  
Latex: Luxury contract latex  
Backing: 100% pes

ABOUT MOHAIR

- + The Merino fiber is completely biodegradable.
- + Merino is, like virgin wool, a renewable product. After the sheering of the goat, its fleece just grows back. In fact, the sheep need to be sheered for their own well-being.
- + The sheering of the sheep is done in an animal friendly manner.
- + The dyeing of our Merino yarn is 100% ecological.

CERTIFICATES

NP EN ISO 9001:2008 certified by TUV Rheinland  
Burning classification - EN 13501-1:2010 - Bfl-s1  
Luxury Class - LC 5 (Prestige)



SECOND NATURE COLLECTION  
By Frankly Amsterdam



MATERIAL STUDY



SECOND NATURE 6405

Hand tufted  
100% Mohair  
14 + 18 mm (or custom height)  
10 Standard colors, custom colors from our Mohair color box  
Any size possible in 3 organic shapes

RUG SPECIFICATIONS:

Pile: 100% Mohair

Yarn origin: Europe

Latex: Luxury contract latex

Backing: 100% pes

ABOUT MOHAIR

+ The Mohair fiber is completely biodegradable.

+ Mohair is, like virgin wool, a renewable product. After the sheering of the goat, its fleece just grows back. In fact, the goats need to be sheered for their own well-being.

+ The sheering of the goat is done in an animal friendly manner.

+ The dyeing of our Mohair yarn is 100% ecological.

CERTIFICATES

NP EN ISO 9001:2008 certified by TUV Rheinland

Burning classification - EN 13501-1:2010 - Bfl-s1

Luxury Class - LC 5 (Prestige)



SHOW OFF COLLECTION  
By Frankly Amsterdam



MATERIAL STUDY



SHOW OFF 5605

Hand tufted  
50% Mohair, 50% Bamboo  
40 mm (or custom height)  
9 Standard colors, custom colors from our Mohair & Bamboo color box  
Any size and shape possible

RUG SPECIFICATIONS  
Pile: 50% Mohair, 50% Bamboo  
Yarn origin: Europe  
Latex: Luxury contract latex  
Backing: 100% pes

ABOUT MOHAIR  
+ The Mohair fiber is completely biodegradable.  
+ Mohair is, like virgin wool, a renewable product. After the sheering of the goat, its fleece just grows back. In fact, the goats need to be sheered for their own well-being.  
+ The sheering of the goat is done in an animal friendly manner.  
+ The dyeing of our Mohair yarn is 100% ecological.

ABOUT BAMBOO  
+ Bamboo yarn is environmental friendly.  
It comes from a natural and sustainable source.  
+ During growth the soil and roots aren't disturbed which is great for soil health.  
+ It is a renewable source and the fastest growing woody plant on our planet.  
+ It releases abundant oxygen into the atmosphere.  
+ The dyeing of our Bamboo yarn is eco-friendly.

CERTIFICATES  
NP EN ISO 9001:2008 certified by TUV Rheinland  
Burning classification - EN 13501-1:2010 - Bfl-s1



SHOW OFF GRADIENT COLLECTION  
By Frankly Amsterdam



MATERIAL STUDY



SHOW OFF GRADIENT 5610

Hand tufted  
50% Mohair, 50% Bamboo  
40 mm (or custom height)  
2 Standard colors, custom colors available  
Choose a start color and end color from our Mohair or Bamboo color box  
Any size and shape possible

RUG SPECIFICATIONS  
Pile: 50% Mohair, 50% Bamboo  
Yarn origin: Europe  
Latex: Luxury contract latex  
Backing: 100% pes

ABOUT MOHAIR  
+ The Mohair fiber is completely biodegradable.  
+ Mohair is, like virgin wool, a renewable product. After the sheering of the goat, its fleece just grows back. In fact, the goats need to be sheered for their own well-being.  
+ The sheering of the goat is done in an animal friendly manner.  
+ The dyeing of our Mohair yarn is 100% ecological.

ABOUT BAMBOO  
+ Bamboo yarn is environmental friendly.  
It comes from a natural and sustainable source.  
+ During growth the soil and roots aren't disturbed which is great for soil health.  
+ It is a renewable source and the fastest growing woody plant on our planet.  
+ It releases abundant oxygen into the atmosphere.  
+ The dyeing of our Bamboo yarn is eco-friendly.

CERTIFICATES  
NP EN ISO 9001:2008 certified by TUV Rheinland  
Burning classification - EN 13501-1:2010 - Bfl-s1



SUPER MOON COLLECTION  
By Frankly Amsterdam



MATERIAL STUDY



SUPER MOON 4307  
Hand tufted  
100% Mohair  
18 mm (or custom height)  
9 Standard colors, custom colors from our Mohair color box  
Any size and shape possible

RUG SPECIFICATIONS:

Pile: 100% Mohair

Yarn origin: Europe

Latex: Luxury contract latex

Backing: 100% pes

ABOUT MOHAIR

+ The Mohair fiber is completely biodegradable.

+ Mohair is, like virgin wool, a renewable product. After the sheering of the goat, its fleece just grows back. In fact, the goats need to be sheered for their own well-being.

+ The sheering of the goat is done in an animal friendly manner.

+ The dyeing of our Mohair yarn is 100% ecological.

CERTIFICATES

NP EN ISO 9001:2008 certified by TUV Rheinland

Burning classification - EN 13501-1:2010 - Bfl-s1

Luxury Class - LC 5 (Prestige)



SUPER MOON 45 COLLECTION  
By Frankly Amsterdam



MATERIAL STUDY



SUPER MOON 45 4301  
Hand tufted  
100% Mohair  
45 mm (or custom height)  
9 Standard colors, custom colors from our Mohair color box  
Any size and shape possible

RUG SPECIFICATIONS:

Pile: 100% Mohair

Yarn origin: Europe

Latex: Luxury contract latex

Backing: 100% pes

ABOUT MOHAIR

+ The Mohair fiber is completely biodegradable.

+ Mohair is, like virgin wool, a renewable product. After the sheering of the goat, its fleece just grows back. In fact, the goats need to be sheered for their own well-being.

+ The sheering of the goat is done in an animal friendly manner.

+ The dyeing of our Mohair yarn is 100% ecological.

CERTIFICATES

NP EN ISO 9001:2008 certified by TUV Rheinland

Burning classification - EN 13501-1:2010 - Bfl-s1

Luxury Class - LC 5 (Prestige)



THINK BIG COLLECTION  
by Frankly Amsterdam



MATERIAL STUDY



THINK BIG 6901  
Hand tufted with rounded corners  
Eucalyptus & Mohair  
12mm (Eucalyptus center) and 45mm (Mohair border)  
1 Standard color  
Make your custom color from our Mohair and Eucalyptus color box

RUG SPECIFICATIONS:

Pile: Eucalyptus & Mohair

Yarn origin: Europe

Latex: Luxury contract latex

Backing: 100% pes

ABOUT EUCALYPTUS

- + It is one of the most sustainable processes of fiber-production to this day.
- + Woodpulp comes from European forests that are strictly managed according to FSC certificate.
- + The Eucalyptus fiber is completely biodegradable.
- + The land used for Eucalyptus is unsuitable for food crops, so there's no competition with the food-industry.
- + The production of Eucalyptus uses only 2,8% water compaired to the production of cotton.
- + The production process of Eucalyptus is a nearly closed loop process, where the the water involved in the production is recycled during manufacturing, and the finishing agents are fully biodegradable.
- + The dyeing of the Eucalyptus yarn is 100% ecological.

ABOUT MOHAIR

- + The Mohair fiber is completely biodegradable.
- + Mohair is, like virgin wool, a renewable product. After the sheering of the goat, its fleece just grows back. In fact, the goats need to be sheered for their own well-being.
- + The sheering of the goat is done in an animal friendly manner.
- + The dyeing of our Mohair yarn is 100% ecological.

CERTIFICATES

NP EN ISO 9001:2008 certified by TUV Rheinland

Burning classification - EN 13501-1:2010 - Cfl-s1

Luxury Class - LC 5 (Prestige)

Forest Stewardship Council (FSC) certified



UN FOLD COLLECTION  
By Frankly Amsterdam



MATERIAL STUDY



UN FOLD 8502  
Hand tufted  
100% Mohair  
14 mm & 20 mm  
7 standard + 110 uni  
Any size and shape possible

RUG SPECIFICATIONS:

Pile: 100% Mohair

Yarn origin: Europe

Latex: Luxury contract latex

Backing: 100% pes

ABOUT MOHAIR

+ The Mohair fiber is completely biodegradable.

+ Mohair is, like virgin wool, a renewable product. After the sheering of the goat, its fleece just grows back. In fact, the goats need to be sheered for their own well-being.

+ The sheering of the goat is done in an animal friendly manner.

+ The dyeing of our Mohair yarn is 100% ecological.

CERTIFICATES

NP EN ISO 9001:2008 certified by TUV Rheinland

Burning classification - EN 13501-1:2010 - Bfl-s1

Luxury Class - LC 5 (Prestige)

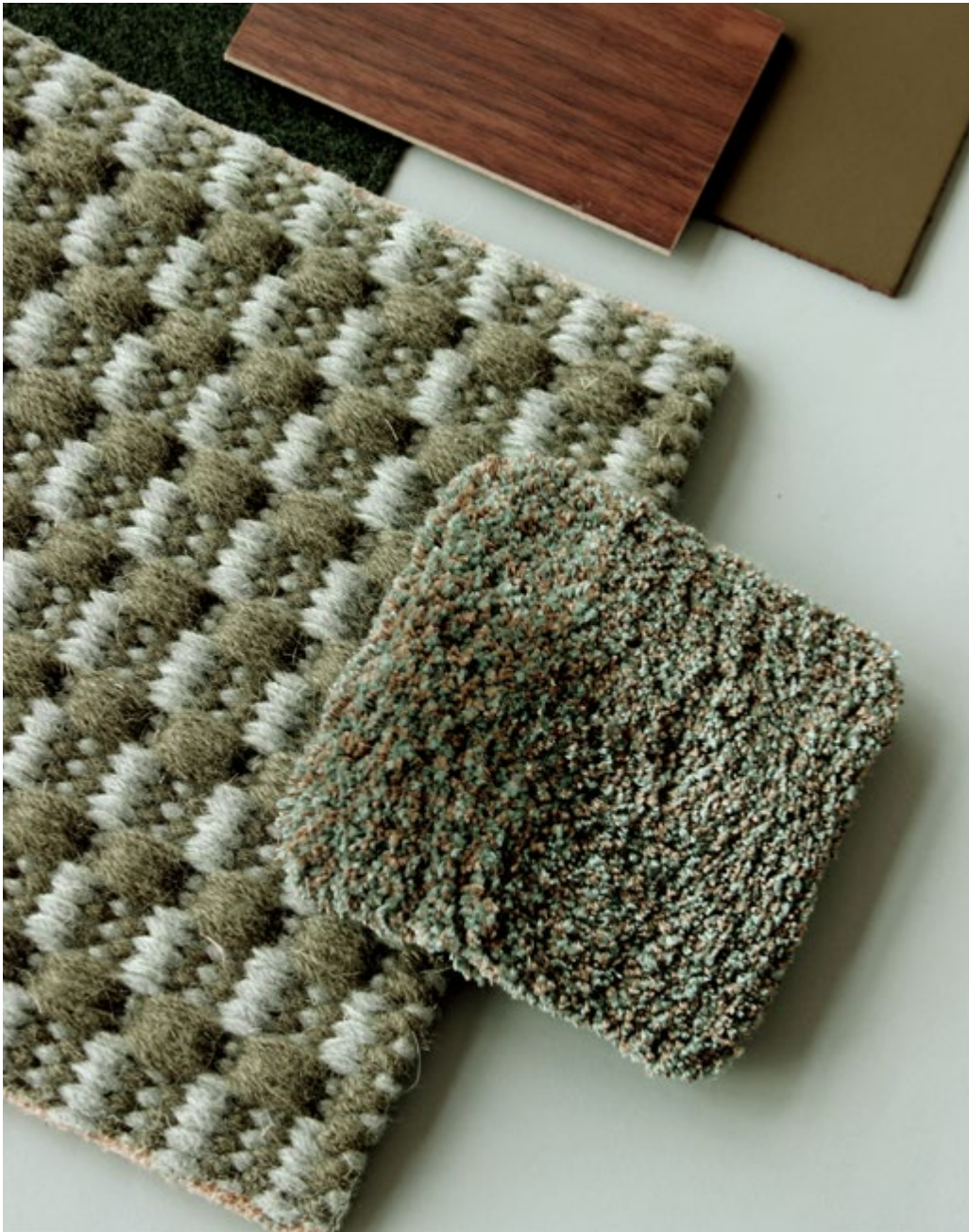


FRANKLY  
AMSTERDAM

HANDWOVEN RUGS



BOTTOM LINE - HANDWOVEN COLLECTION  
By Frankly Amsterdam



MATERIAL STUDY



BOTTOM LINE 5006

Handwoven  
100% Wool  
8 mm  
6 Standard colors, custom colors from our Wool color box  
Any length possible with maximum width 5 meters

RUG SPECIFICATIONS  
Pile: 100% Wool  
Yarn origin: Europe, New Zealand  
Latex: Luxury contract latex  
Backing: 100% pes

ABOUT WOOL  
+ Our Wool yarn is recovered strictly from sheep living in Europe and New Zealand.  
+ The Wool fiber is completely biodegradable.  
+ Wool is a renewable product. After the sheering of the sheep, their Wool fleece just grows back. In fact, the sheep needs to be sheered for their own well-being.  
+ The sheering of the sheep is done in an animal friendly manner.  
+The dyeing of our wool yarn is 100% ecological.

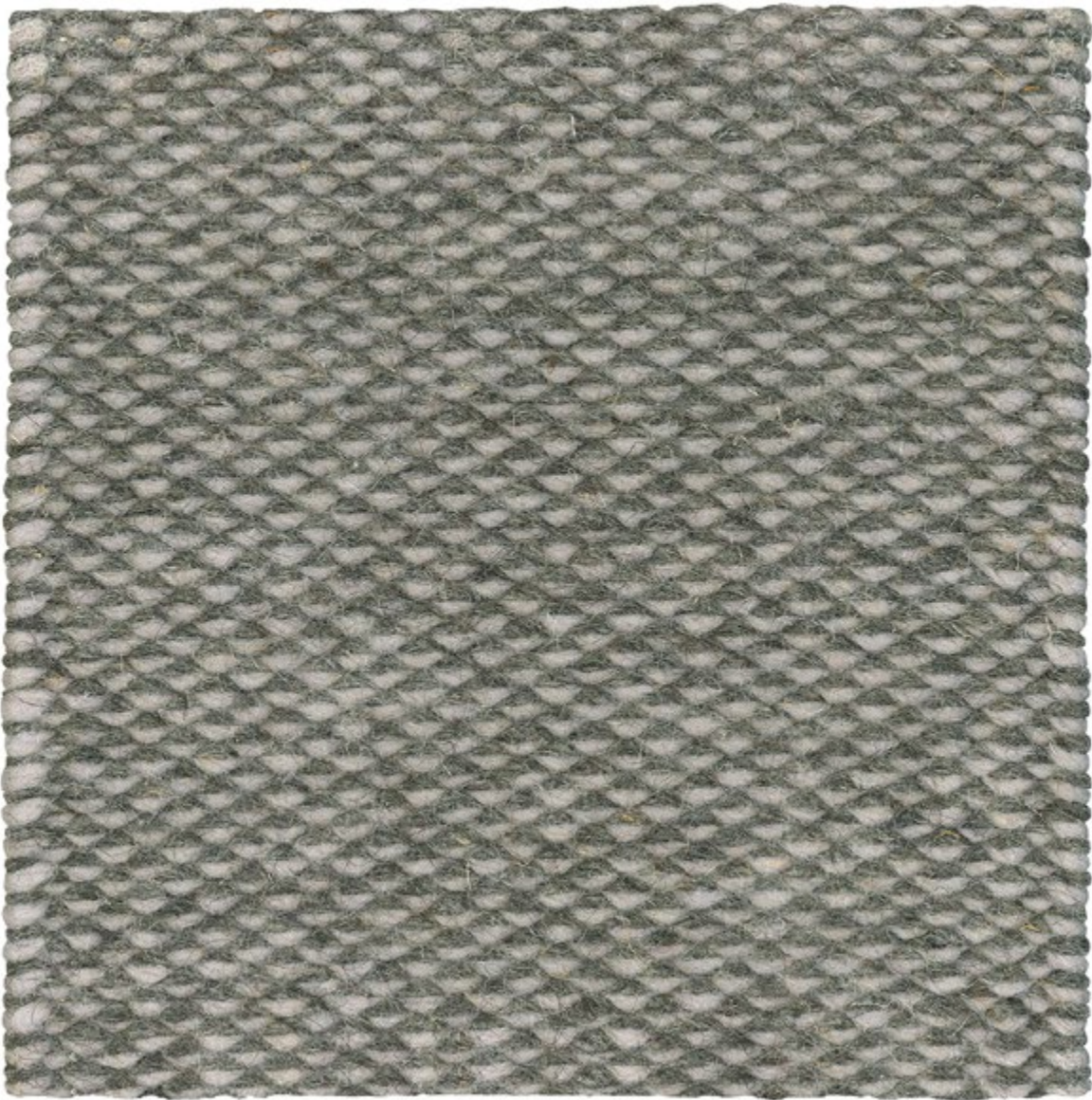
CERTIFICATES  
NP EN ISSO 9001:2008 certified by TUV Rheinland  
Burning classification - EN 13501-1:2010 - Bfl-s1  
Luxury Class - LC 5 (Prestige)



EAGLE EYE - HANDWOVEN COLLECTION  
By Frankly Amsterdam



MATERIAL STUDY



EAGLE EYE 5104

Handwoven  
100% Virgin Wool  
8 mm

7 Standard colors, custom colors from our Wool color box  
Any length possible with maximum width 5 meters

RUG SPECIFICATIONS

Pile: 100% Wool  
Yarn origin: Europe, New Zealand  
Latex: Luxury contract latex  
Backing: 100% pes

ABOUT WOOL

- + Our Wool yarn is recovered strictly from sheep living in Europe and New Zealand.
- + The Wool fiber is completely biodegradable.
- + Wool is a renewable product. After the sheering of the sheep, their Wool fleece just grows back. In fact, the sheep needs to be sheered for their own well-being.
- + The sheering of the sheep is done in an animal friendly manner.
- +The dyeing of our wool yarn is 100% ecological.

CERTIFICATES

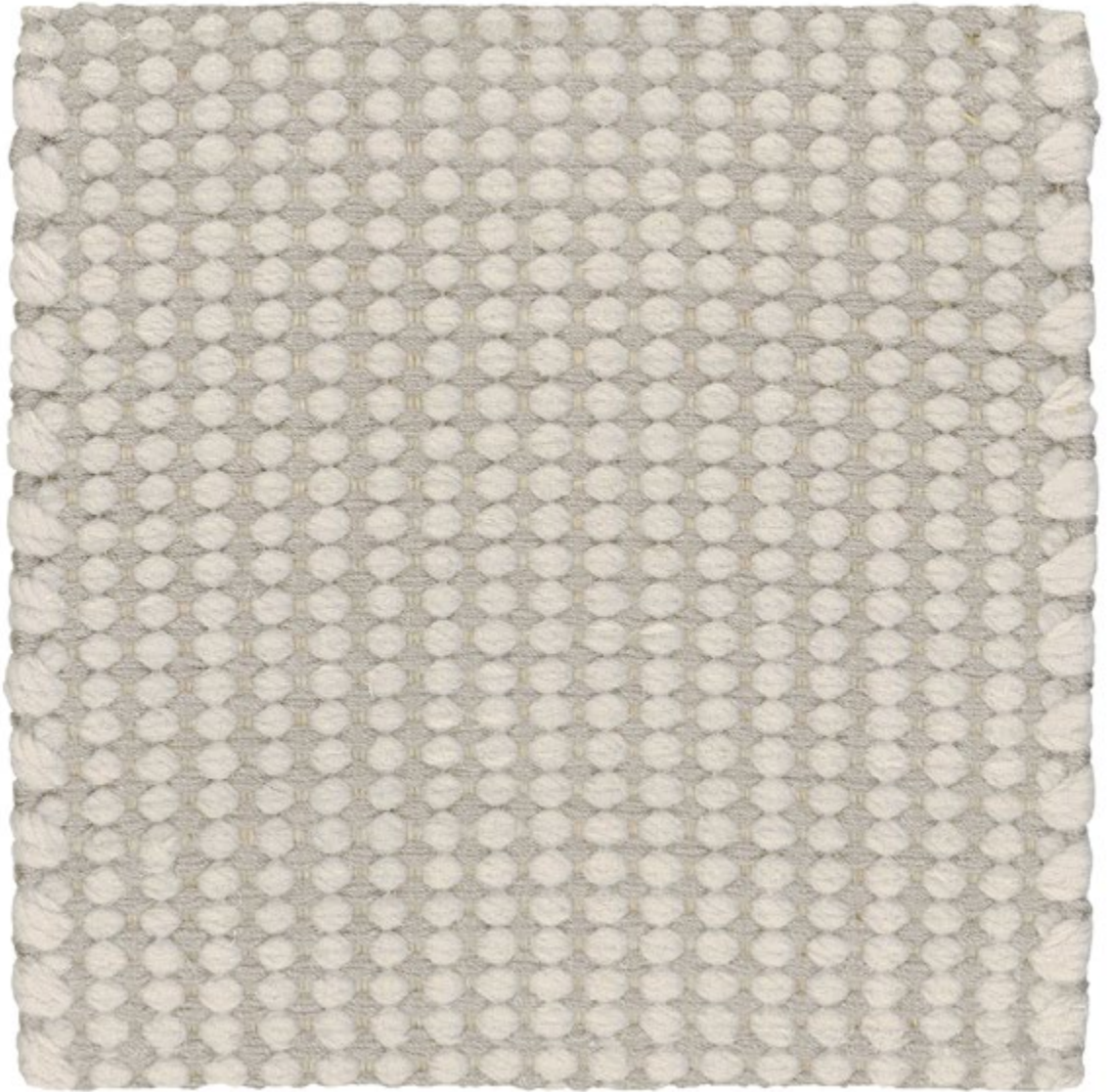
NP EN ISSO 9001:2008 certified by TUV Rheinland  
Burning classification - EN 13501-1:2010 - Bfl-s1  
Luxury Class - LC 5 (Prestige)



MILE STONE - HANDWOVEN COLLECTION  
By Frankly Amsterdam



MATERIAL STUDY



MILE STONE 4901  
Handwoven  
50% Wool, 50% Thick Eucalyptus  
8 mm  
6 Standard colors, custom colors from our Wool and Eucalyptus color box  
Any length possible with maximum width 5 meters

RUG SPECIFICATIONS  
Pile: 50% Wool, 50% Thick Eucalyptus  
Yarn origin: Europe, New Zealand  
Latex: Luxury contract latex  
Backing: 100% pes

ABOUT WOOL  
+ Our Wool yarn is recovered strictly from sheep living in Europe and New Zealand.  
+ The Wool fiber is completely biodegradable.  
+ Wool is a renewable product. After the sheering of the sheep, their Wool fleece just grows back. In fact, the sheep needs to be sheered for their own well-being.  
+ The sheering of the sheep is done in an animal friendly manner.  
+The dyeing of our wool yarn is 100% ecological.

ABOUT EUCALYPTUS  
+ It is one of the most sustainable processes of fiber-production to this day.  
+ Woodpulp comes from European forests that are strictly managed according to FSC certificate.  
+ The Eucalyptus fiber is completely biodegradable.  
+ The land used for Eucalyptus is unsuitable for food crops, so there's no competition with the food-industry.  
+ The production of Eucalyptus uses only 2,8% water compaired to the production of cotton.  
+ The production process of Eucalyptus is a nearly closed loop process, where the the water involved in the production is recycled during manufacturing, and the finishing agents are fully biodegradable.  
+ The dyeing of the Eucalyptus yarn is 100% ecological.

CERTIFICATES  
NP EN ISSO 9001:2008 certified by TUV Rheinland  
Burning classification - EN 13501-1:2010 - Cfl-s1  
Luxury Class - LC 5 (Prestige)  
Forest Stewardship Council (FSC) certified



FRANKLY  
AMSTERDAM

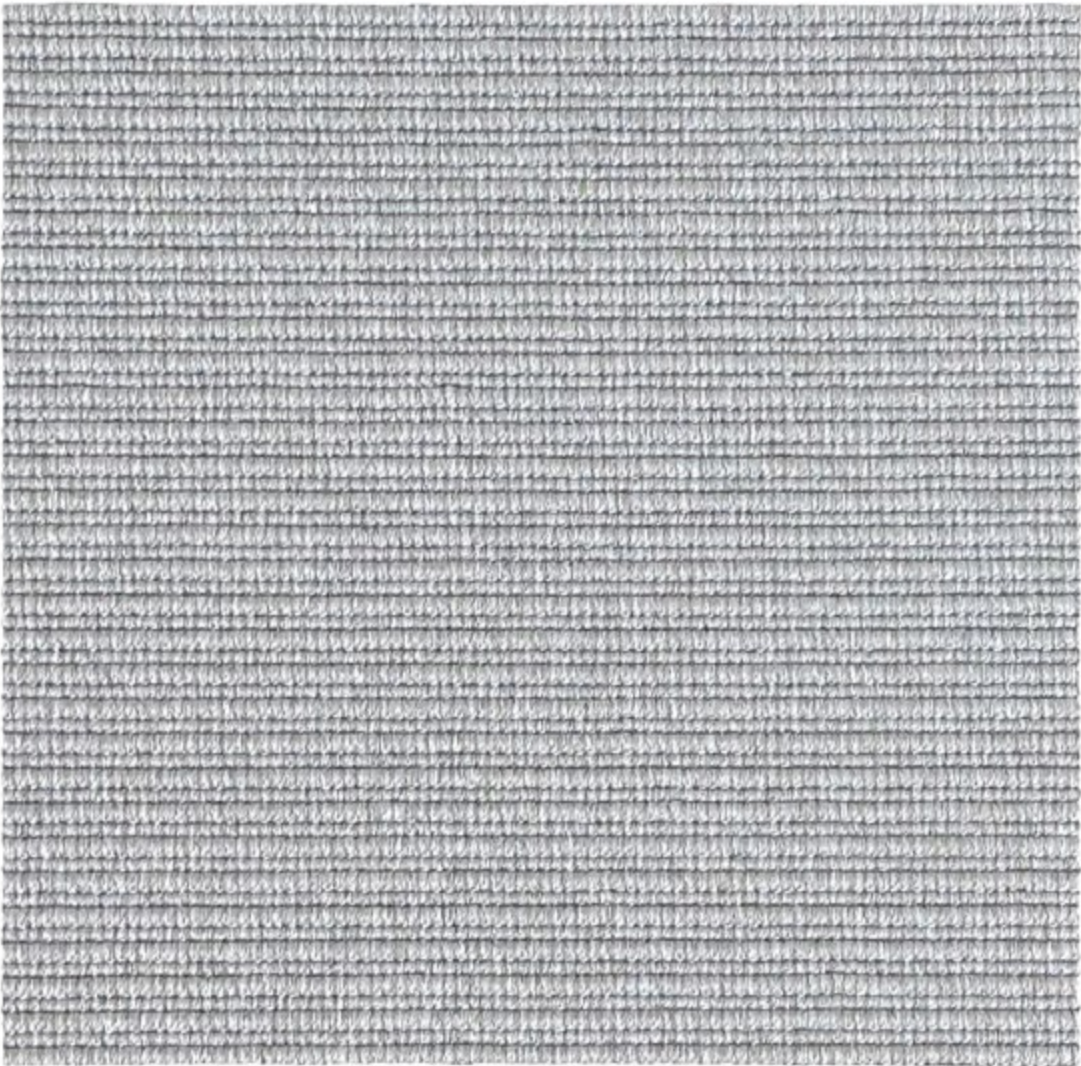
CONTRACT



DAY OFF - CONTRACT COLLECTION  
By Frankly Amsterdam



MATERIAL STUDY



RUG SPECIFICATIONS  
Pile: 100% Recycled PET  
Waste origin: Worldwide  
Yarn origin: Europe  
Backing: 100% P.P. + Latex  
Latex: Luxury contract latex

ABOUT RECYCLED PET  
+ Recycled PET is made of PET waste that is recovered from seas all over the world  
+ Recycled PET can be recycled over and over

CERTIFICATES  
Exemplary level for VOC Emissions  
Burning classification - Dfl-s1  
Classification EN 1307 and EN 14041

DAY OFF 7201  
Flatwoven  
100% Recycled PET plastic  
± 4,0 mm  
4 Standard colors and 2 finishing options  
For wall to wall use, finished as rug or stair runner  
Suitable for indoor and outdoor use



DONE DEAL - CONTRACT COLLECTION  
By Frankly Amsterdam



MATERIAL STUDY



DONE DEAL 7002

Tufted  
50% Wool, 50% Eucalyptus  
12 mm

9 Standard colors, custom colors available on request  
For wall to wall use from 24 m<sup>2</sup>

RUG SPECIFICATIONS

Pile: 100% Wool  
Yarn origin: Europe, New Zealand  
Backing: P.P and Latex  
Latex: Luxury contract latex

ABOUT WOOL

- + Our Wool yarn is recovered strictly from sheep living in Europe and New Zealand.
- + The Wool fiber is completely biodegradable.
- + Wool is a renewable product. After the sheering of the sheep, their Wool fleece just grows back. In fact, the sheep needs to be sheered for their own well-being.
- + The sheering of the sheep is done in an animal friendly manner.
- + The dyeing of our wool yarn is 100% ecological.

ABOUT EUCALYPTUS

- + It is one of the most sustainable processes of fiber-production to this day.
- + Woodpulp comes from European forests that are strictly managed according to FSC certificate.
- + The Eucalyptus fiber is completely biodegradable.
- + The land used for Eucalyptus is unsuitable for food crops, so there's no competition with the food-industry.
- + The production of Eucalyptus uses only 2,8% water compaired to the production of cotton.
- + The production process of Eucalyptus is a nearly closed loop process, where the the water involved in the production is recycled during manufacturing, and the finishing agents are fully biodegradable.
- + The dyeing of the Eucalyptus yarn is 100% ecological.

CERTIFICATES

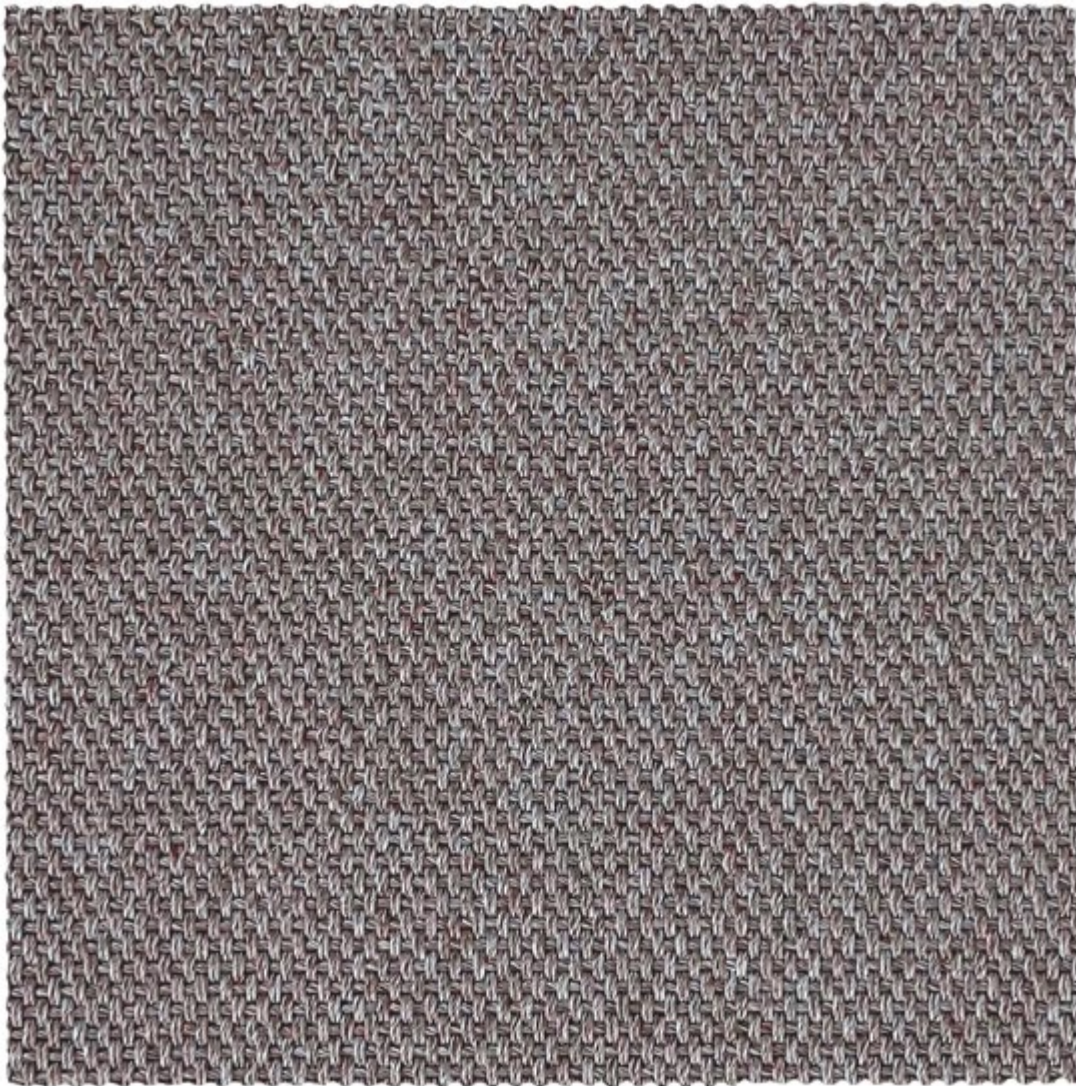
Burning classification: Bfl-s1  
Classification EN 1307:2014 and EN 14041:2004  
This product fulfills the requirements for LEED certified buildings (EQC 4.3)  
VOC-emission label A+



EASY GOING - CONTRACT COLLECTION  
By Frankly Amsterdam



MATERIAL STUDY



EASY GOING 7405  
Flatwoven  
100% Recycled PET plastic  
± 4,0 mm  
4 Standard colors and 2 finishing options  
For wall to wall use, finished as rug or stair runner  
Suitable for indoor and outdoor use

RUG SPECIFICATIONS  
Pile: 100% Recycled PET  
Waste origin: Worldwide  
Yarn origin: Europe  
Backing: 100% P.P. + Latex  
Latex: Luxury contract latex

ABOUT RECYCLED PET  
+ Recycled PET is made of PET waste that is recovered from seas all over the world  
+ Recycled PET can be recycled over and over

CERTIFICATES  
Exemplary level for VOC Emissions  
Burning classification - Dfl-s1  
Classification EN 1307 and EN 14041



GOOD LIFE - CONTRACT COLLECTION  
By Frankly Amsterdam



MATERIAL STUDY



GOOD LIFE 7302

Flatwoven  
100% Recycled PET plastic  
± 4,0 mm  
4 Standard colors and 2 finishing options  
For wall to wall use, finished as rug or stair runner  
Suitable for indoor and outdoor use

RUG SPECIFICATIONS  
Pile: 100% Recycled PET  
Waste origin: Worldwide  
Yarn origin: Europe  
Backing: 100% P.P. + Latex  
Latex: Luxury contract latex

ABOUT RECYCLED PET  
+ Recycled PET is made of PET waste that is recovered from seas all over the world  
+ Recycled PET can be recycled over and over

CERTIFICATES  
Exemplary level for VOC Emissions  
Burning classification - Dfl-s1  
Classification EN 1307 and EN 14041



HIGH TIDE - CONTRACT COLLECTION  
By Frankly Amsterdam



MATERIAL STUDY



HIGH TIDE 7103  
Flatwoven  
100% Recycled PET plastic  
± 4,0 mm  
4 Standard colors and 2 finishing options  
For wall to wall use, finished as rug or stair runner  
Suitable for indoor and outdoor use

RUG SPECIFICATIONS  
Pile: 100% Recycled PET  
Waste origin: Worldwide  
Yarn origin: Europe  
Backing: 100% P.P. + Latex  
Latex: Luxury contract latex

ABOUT RECYCLED PET  
+ Recycled PET is made of PET waste that is recovered from seas all over the world  
+ Recycled PET can be recycled over and over

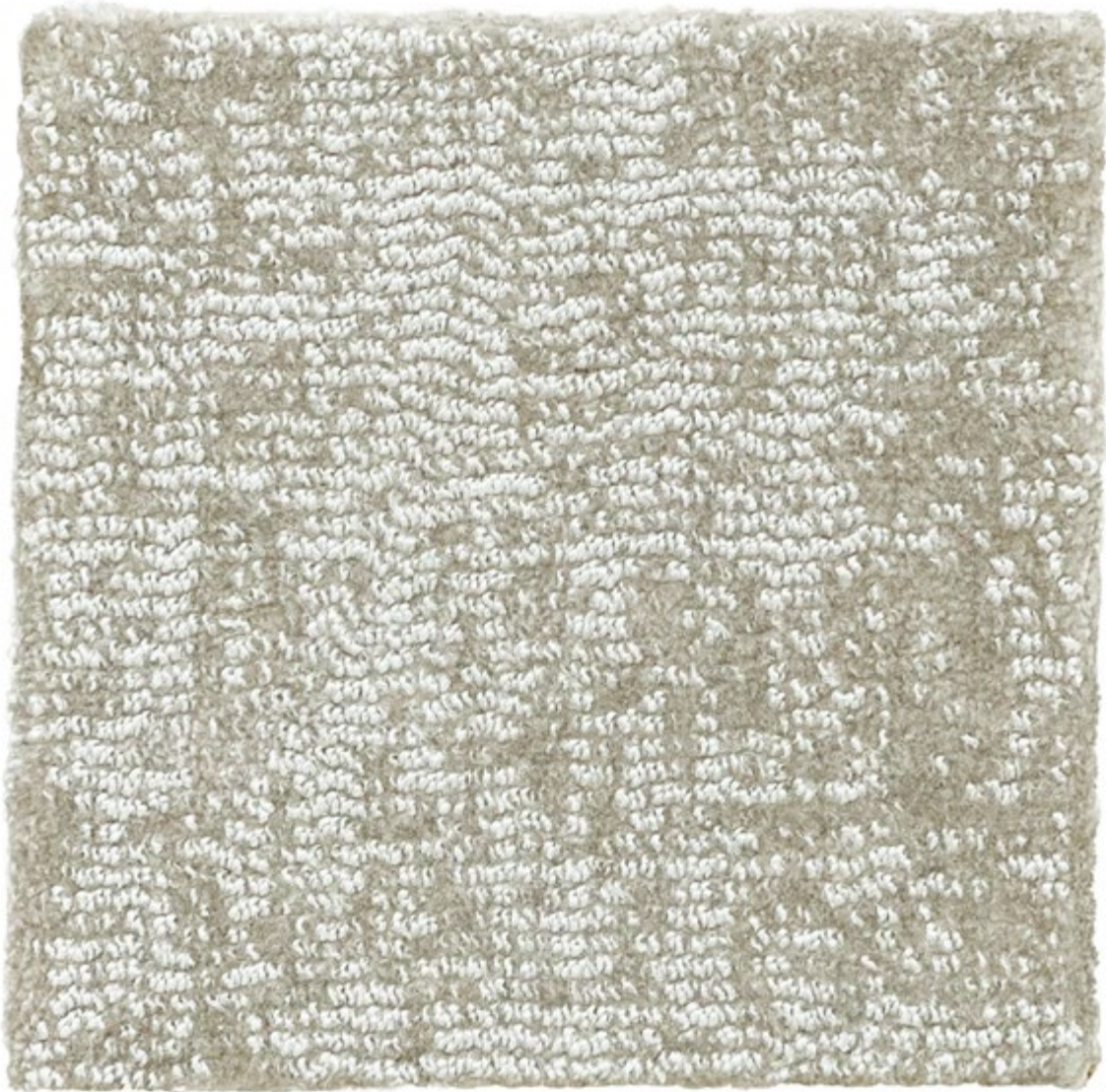
CERTIFICATES  
Exemplary level for VOC Emissions  
Burning classification - Dfl-s1  
Classification EN 1307 and EN 14041



ON RETURN - CONTRACT COLLECTION  
By Frankly Amsterdam



MATERIAL STUDY



ON RETURN 6002  
Machine woven  
100% Recycled plastic  
9 mm (11 mm including backing)  
12 Standard colors, custom colors available on request  
For wall to wall use or finished as rug

RUG SPECIFICATIONS  
Pile: 100% Recycled plastic  
Yarn origin: Europe  
Backing: 100% Jute + Latex  
Latex: Luxury contract latex

ABOUT RECYCLED PLASTIC  
+ Recycled plastic is made from fishing nets, fabric scraps, carpet flooring and industrial plastic  
+ Recycled plastic can be recycled endlessly  
+ After recycling, this recycled nylon is exactly the same as virgin fossil-based nylon

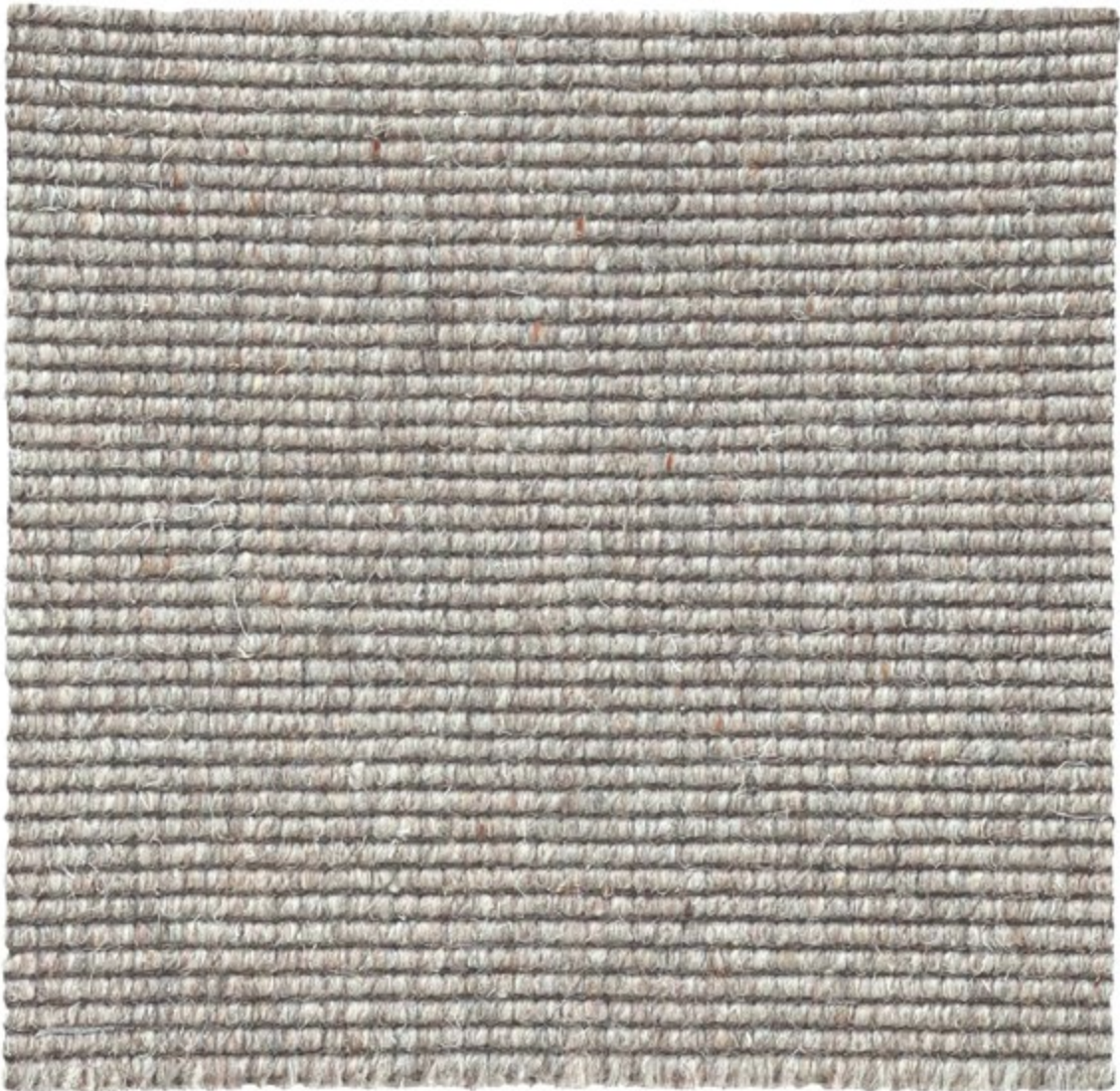
CERTIFICATES  
Exemplary level for VOC Emissions  
Burning classification - Cfl-s1  
Classification EN 1307:2014 and EN 14041:2004  
Cradle-to-Cradle Gold  
STANDARD 100 by OEKO-TEX



ROLL OVER - CONTRACT COLLECTION  
By Frankly Amsterdam



MATERIAL STUDY



ROLL OVER 6101  
Machine woven  
100% Wool  
3 mm (4 mm including backing)  
6 Standard colors  
For wall to wall use or finished as rug

RUG SPECIFICATIONS  
Pile: 100% Wool  
Yarn origin: Europe, New Zealand  
Backing: P.P and Latex  
Latex: Luxury contract latex

ABOUT WOOL  
+ Our Wool yarn is recovered strictly from sheep living in Europe and New Zealand.  
+ The Wool fiber is completely biodegradable.  
+ Wool is a renewable product. After the sheering of the sheep, their Wool fleece just grows back. In fact, the sheep needs to be sheered for their own well-being.  
+ The sheering of the sheep is done in an animal friendly manner.  
+The dyeing of our wool yarn is 100% ecological.

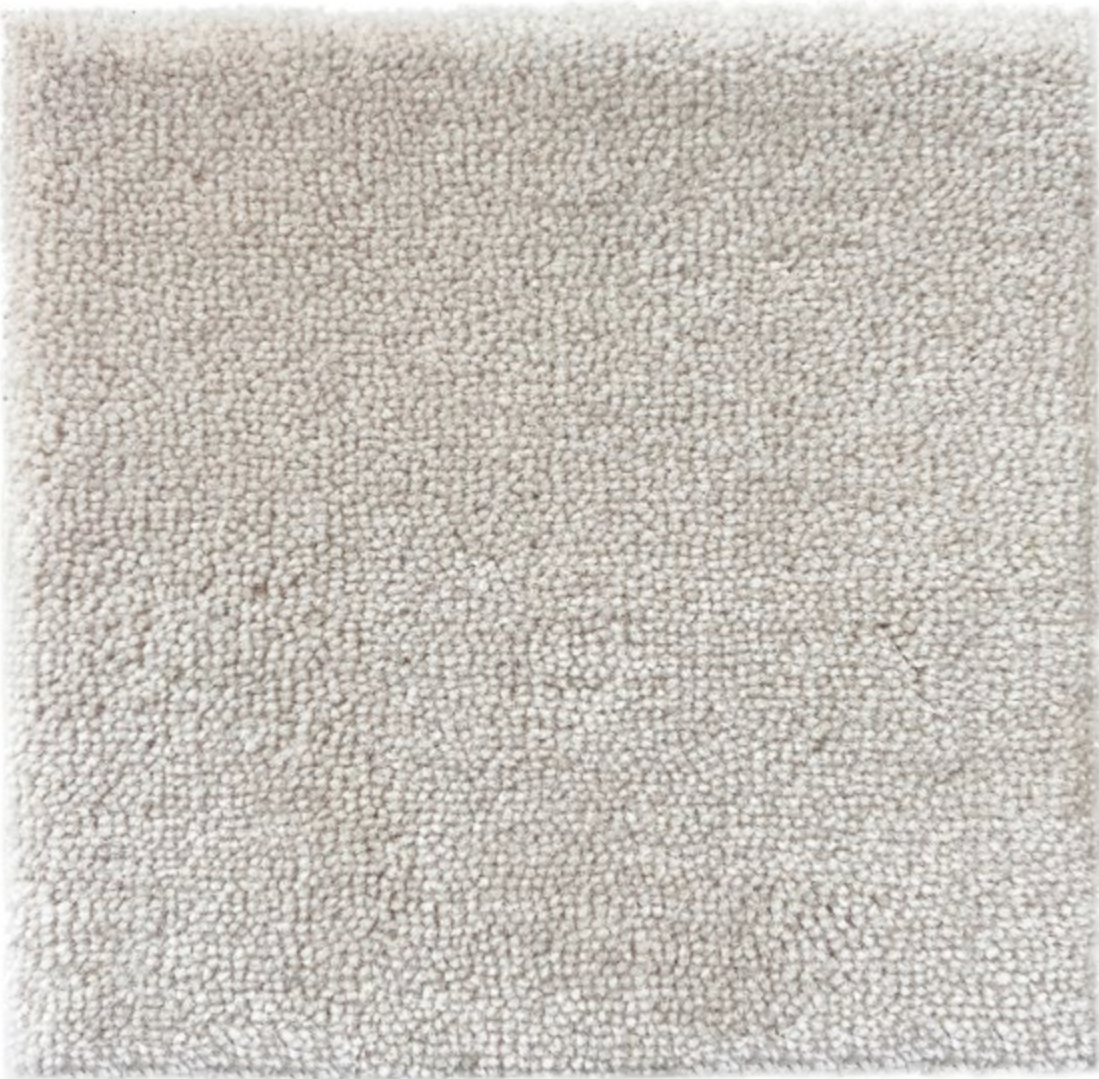
CERTIFICATES  
Burning classification: Bfl-s1  
Classification EN 1307:2014 and EN 14041:2004  
This product fulfills the requirements for LEED certified buildings (EQC 4.3)  
VOC-emission label A+



STEP UP 9 - CONTRACT COLLECTION  
By Frankly Amsterdam



MATERIAL STUDY



RUG SPECIFICATIONS  
Pile: 100% Wool  
Yarn origin: Europe, New Zealand  
Backing: 100% Action back P.P.  
Latex: Luxury contract latex

ABOUT WOOL  
+ Our Wool yarn is recovered strictly from sheep living in Europe and New Zealand.  
+ The Wool fiber is completely biodegradable.  
+ Wool is a renewable product. After the sheering of the sheep, their Wool fleece just grows back. In fact, the sheep needs to be sheered for their own well-being.  
+ The sheering of the sheep is done in an animal friendly manner.  
+The dyeing of our wool yarn is 100% ecological.

CERTIFICATES  
Burning classification: Bfl-s1  
Classification EN 1307:2014 and EN 14041:2004  
This product fulfills the requirements for LEED certified buildings (EQC 4.3)  
VOC-emission label A+

STEP UP 9 6302  
Machine knitted  
100% Pure New Wool  
7 mm (9 mm including backing)  
20 Standard colors, custom colors available on request  
For wall to wall use or finished as rug



STEP UP 16 - CONTRACT COLLECTION  
By Frankly Amsterdam



MATERIAL STUDY



STEP UP 16 6209  
Machine knitted  
100% Pure New Wool  
14 mm (16 mm including backing)  
9 Standard colors, custom colors available on request  
For wall to wall use or finished as rug

RUG SPECIFICATIONS  
Pile: 100% Wool  
Yarn origin: Europe, New Zealand  
Backing: 100% Action back P.P.  
Latex: Luxury contract latex

ABOUT WOOL  
+ Our Wool yarn is recovered strictly from sheep living in Europe and New Zealand.  
+ The Wool fiber is completely biodegradable.  
+ Wool is a renewable product. After the sheering of the sheep, their Wool fleece just grows back. In fact, the sheep needs to be sheered for their own well-being.  
+ The sheering of the sheep is done in an animal friendly manner.  
+The dyeing of our wool yarn is 100% ecological.

CERTIFICATES  
Burning classification: Bfl-s1  
Classification EN 1307:2014 and EN 14041:2004  
This product fulfills the requirements for LEED certified buildings (EQC 4.3)  
VOC-emission label A+



FRANKLY  
AMSTERDAM

CURTAINS



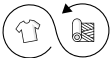
MIND FULL - CURTAIN COLLECTION  
By Frankly Amsterdam



CURTAIN



MIND FULL  
60% Recycled Cotton, 30% Polyester, 10% other recycled fibres  
Curtain  
Width 290 cm  
Available in 9 standard colors



CURTAIN SPECIFICATIONS  
Composition: 100% Recycled Cotton  
Waste origin: Worldwide  
Yarn origin: Europe

ABOUT RECYCLED COTTON  
+ High quality recycled cotton fibers made from pre- and post-consumer textile waste  
+ Transparent supply chain

CERTIFICATES  
Organic Cotton Standard (OCS)  
Global Recycled Standard (GRS)  
Higg Index: Higg Facility Social & Labor Module (FSLM),  
Higg Facility Environmental Module (FEM)  
STANDARD 100 by OEKO-TEX



RE COVER - CURTAIN COLLECTION  
By Frankly Amsterdam

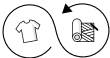


CURTAIN



RE COVER

60% Recycled Cotton, 30% Polyester, 10% other recycled fibres  
Curtain  
Width 280 cm  
Available in 5 standard colors



CURTAIN SPECIFICATIONS  
Composition: 100% Recycled Cotton  
Waste origin: Worldwide  
Yarn origin: Europe

ABOUT RECYCLED COTTON  
+ High quality recycled cotton fibers made from pre- and post-consumer textile waste  
+ Transparent supply chain

CERTIFICATES  
Organic Cotton Standard (OCS)  
Global Recycled Standard (GRS)  
Higg Index: Higg Facility Social & Labor Module (FSLM),  
Higg Facility Environmental Module (FEM)  
STANDARD 100 by OEKO-TEX



TRUE STORY - CURTAIN COLLECTION  
By Frankly Amsterdam



CURTAIN



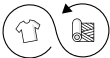
CURTAIN SPECIFICATIONS  
Composition: 100% Recycled Cotton  
Waste origin: Worldwide  
Yarn origin: Europe

ABOUT RECYCLED COTTON  
+ High quality recycled cotton fibers made from pre- and post-consumer textile waste  
+ Transparent supply chain

CERTIFICATES  
Organic Cotton Standard (OCS)  
Global Recycled Standard (GRS)  
Higg Index: Higg Facility Social & Labor Module (FSLM),  
Higg Facility Environmental Module (FEM)  
STANDARD 100 by OEKO-TEX

TRUE STORY

60% Recycled Cotton, 30% Polyester, 10% other recycled fibres  
Curtain  
Width 290 cm  
Available in 4 standard colors





FRANKLY  
AMSTERDAM

THROWS



COME OVER COLLECTION  
By Frankly Amsterdam



THROW



COME OVER BLEND 01  
Knitted  
100% Undyed Eco Cashmere  
140x180cm incl. 5cm knitted border  
3 Standard colors from undyed eco Cashmere

THROW SPECIFICATIONS  
Composition: 100% Eco Cashmere  
Yarn origin: Europe

ABOUT UNDYED ECO CASHMERE  
+ Our Cashmere yarn is recovered strictly from sheep living in Europe and traceable to the source.  
+ The Cashmere fiber is completely biodegradable.  
+ Cashmere is a renewable product. After the sheering of the goats, their Cashmere fleece just grows back. In fact, the goats needs to be sheered for their own well-being.  
+ The sheering of the goats is done in an animal friendly manner.  
+ The fibers of this throw are undyed cashmere fibers and naturally show the various colors of the Cashmere goat. This way, no harsh chemicals get in contact with the fiber.



FINE LINE COLLECTION  
By Frankly Amsterdam



THROW



FINE LINE 01  
Knitted  
100% Cashmere  
140x190cm with fringes  
3 Standard colors, made with undyed eco Cashmere

THROW SPECIFICATIONS  
Composition: 100% Eco Cashmere  
Yarn origin: Europe

ABOUT UNDYED ECO CASHMERE  
+ Our Cashmere yarn is recovered strictly from sheep living in Europe and traceable to the source.  
+ The Cashmere fiber is completely biodegradable.  
+ Cashmere is a renewable product. After the sheering of the goats, their Cashmere fleece just grows back. In fact, the goats needs to be sheered for their own well-being.  
+ The sheering of the goats is done in an animal friendly manner.  
+ Color 01, 02 and 03 are undyed cashmere fibers and naturally show the various colors of the Cashmere goat. This way, no harsh chemicals get in contact with the fiber.



SETTLE IN COLLECTION  
By Frankly Amsterdam



THROW



SETTLE IN 01

Knitted  
100% Cashmere  
140x180cm including 10cm border  
6 Standard colors (of which 3 colors from undyed eco Cashmere)  
Also available as baby blanket, 70x90cm

THROW SPECIFICATIONS  
Composition: 100% Eco Cashmere  
Yarn origin: Europe

ABOUT UNDYED ECO CASHMERE  
+ Our Cashmere yarn is recovered strictly from sheep living in Europe and traceable to the source.  
+ The Cashmere fiber is completely biodegradable.  
+ Cashmere is a renewable product. After the sheering of the goats, their Cashmere fleece just grows back. In fact, the goats needs to be sheered for their own well-being.  
+ The sheering of the goats is done in an animal friendly manner.  
+ Color 01, 02 and 03 are undyed cashmere fibers and naturally show the various colors of the Cashmere goat. This way, no harsh chemicals get in contact with the fiber.



SOFT SPACE COLLECTION  
By Frankly Amsterdam



THROW



SOFT SPACE 06  
Woven  
100% Cashmere  
140x190cm + 8cm fringes  
6 Standard colors (of which 3 colors from undyed eco Cashmere)  
Also available in dual color, 140x220cm + 8cm fringes

THROW SPECIFICATIONS  
Composition: 100% Eco Cashmere  
Yarn origin: Europe

ABOUT UNDYED ECO CASHMERE  
+ Our Cashmere yarn is recovered strictly from sheep living in Europe and traceable to the source.  
+ The Cashmere fiber is completely biodegradable.  
+ Cashmere is a renewable product. After the sheering of the goats, their Cashmere fleece just grows back. In fact, the goats needs to be sheered for their own well-being.  
+ The sheering of the goats is done in an animal friendly manner.  
+ Color 01, 02 and 03 are undyed cashmere fibers and naturally show the various colors of the Cashmere goat. This way, no harsh chemicals get in contact with the fiber.