


FRANKLY  
AMSTERDAM





## GENTLE BREEZE

Available as	Curtain
Roll width	300 cm
Pattern direction	
Turnable	Yes
Type	Sheer
Composition	100% Polyester
Colors	9 Standard: 1, 2, 4, 8, 9, 11, 13, 14, 16

Care instructions  
Note



- + dry cleaning is advised
- + due to different yarn dye lots a slight variation in color tone may occur
- + please note that this fabric is not suitable for roman blinds

A sheer curtain with a unique structure, Gentle Breeze is transparent enough to watch the world outside while still offering privacy. Made from 100% polyester the soft, open weave structure of Gentle Breeze allows for flowing movement in the fabric.

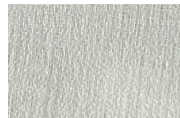
Gentle Breeze is custom made for you by skilled hands in the heart of Italy with a width of 300 cm.



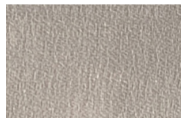
01



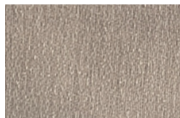
02



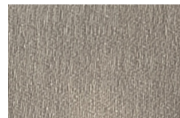
04



08



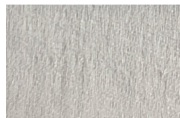
09



11



13



14



16

## CARE INSTRUCTIONS

- Professional dry-cleaning of the curtain fabrics is advised. If you decide to wash the fabrics at home, please follow the instructions mentioned below.
- Before cleaning the curtains dust them. Either with the vacuum brush attachment on a low setting or shake them out.
- Cold wash the curtains at 30°C without spin or centrifuge cycle.
- Do not rub or wring fabric after washing.
- All fabrics can be ironed on low temperature and steam ironed.
- When in **doubt**, please don't hesitate to contact us, or take a look on our website, [www.frankly.amsterdam/careinstructions](http://www.frankly.amsterdam/careinstructions), for more information.



Dry-cleaning is advised

## WARRANTY

- Frankly Amsterdam **guarantees** its curtains for 2 years of normal use.
- All our products are made with care. In case a **manufacturing defect** escaped our attention, please inform us within 14 days after delivery and leave the product unused.
- Small differences or **irregularities** in color or size may occur. This is inherent to the use of these fibers, in particular linen, and has to be accepted when within normal commercial tolerances.
- Frankly Amsterdam will not accept any complaint if shading is concerned.

