

FRANKLY
AMSTERDAM





MIND FULL

Available as	Curtain
Roll width	295 cm
Pattern direction	
Turnable	Yes
Type	Curtain
Composition	60% CO, 30% PES, 10% other recycled fibres
Colors	9 Standard: 7501 to 7509
Care instructions	
Note	+ dry cleaning is advised + due to the inherent imperfections in natural fibers, there may be a subtle variation in color tone and minor irregularities that are typical to linen and recycled materials

When thinking of a classic curtain, our Mind Full comes to mind. Made from a mix of recycled cotton and other fabric Mind Full is a stylish tightly woven curtain. Less movement in the fabric makes for a more structured finishing.

The recycled cotton used in this curtain is sourced from recycled textile waste. The material is process into fibres and woven in a new yarn. This technique helps move the textile industry to a closed-loop model.

Mind Full is custom made for you by skilled hands in Europe with a width of 295 cm.

This curtain is made of recycled fabric.



Textile waste gets collected



The textile is sorted by color



All textile gets recycled into new fiber



Fibers are made into new yarn



Yarn is made into new fabric



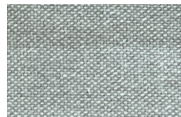
You contribute to a closed-loop end-to-end solution



7501



7502



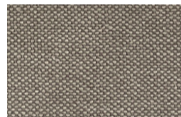
7503



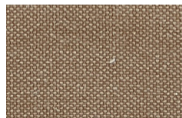
7504



7505



7506



7507



7508



7509

CARE INSTRUCTIONS

- Professional dry-cleaning of the curtain fabrics is advised. If you decide to wash the fabrics at home, please follow the instructions mentioned below.
- Before cleaning the curtains dust them. Either with the vacuum brush attachment on a low setting or shake them out.
- Cold wash the curtains at 30°C without spin or centrifuge cycle.
- Do not rub or wring fabric after washing.
- All fabrics can be ironed on low temperature and steam ironed.
- When in **doubt**, please don't hesitate to contact us, or take a look on our website, www.frankly.amsterdam/careinstructions, for more information.



Dry-cleaning is advised

WARRANTY

- Frankly Amsterdam **guarantees** its curtains for 2 years of normal use.
- All our products are made with care. In case a **manufacturing defect** escaped our attention, please inform us within 14 days after delivery and leave the product unused.
- Small differences or **irregularities** in color or size may occur. This is inherent to the use of these fibers, in particular linen, and has to be accepted when within normal commercial tolerances.
- Frankly Amsterdam will not accept any complaint if shading is concerned.

