

FRANKLY  
AMSTERDAM





## SOME DAY

Available as	Light upholstery
Width	140 cm
Weight	540 gr/m <sup>2</sup>
Composition	60% linen, 30% cotton, 10% polyester
Colors	2 standard colors 1, 2

Care instructions     

Martindale 20.000

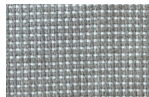
Pilling 3/4

Note

+ dry cleaning is advised  
+ due to the inherent imperfections in natural fibers, there may be a subtle variation in color tone and minor irregularities that are typical to linen and recycled materials

Some Day's stylish pattern has us dreaming of far away places. This blended fabric includes a natural linen with a a visible weave pattern. Its unique texture is the perfect choice for smaller statement pieces, cushions or a pouf.

Some Day is made for you by skilled hands in Europe.



01



02

## CARE INSTRUCTIONS

- Professional dry-cleaning of the upholstery fabrics is advised. If you decide to wash the fabrics at home, please follow the instructions mentioned below.
- Before cleaning the upholstery fabrics, dust them. Either with the vacuum brush attachment on a low setting or shake them out.
- Cold wash the fabric at 30°C without spin or centrifuge cycle.
- Do not rub or wring fabric after washing.
- All fabrics can be ironed on low temperature and steam ironed.
- When in **doubt**, please don't hesitate to contact us, or take a look on our website, [www.frankly.amsterdam/careinstructions](http://www.frankly.amsterdam/careinstructions), for more information.



Dry-cleaning is advised

## WARRANTY

- Frankly Amsterdam **guarantees** its curtains for 2 years of normal use.
- All our products are made with care. In case a **manufacturing defect** escaped our attention, please inform us within 14 days after delivery and leave the product unused.
- Small differences or **irregularities** in color or size may occur. This is inherent to the use of these fibers, in particular linen, and has to be accepted when within normal commercial tolerances.
- Frankly Amsterdam will not accept any complaint if shading is concerned.

