

FRANKLY
AMSTERDAM





TRUE STORY

Available as

Curtain

Roll width

290 cm

Pattern direction



Turnable

Yes

Type

Curtain

Composition

60% CO, 30% PES, 10% other recycled fibres

Colors

4 Standard:

7601 to 7604

Care instructions



Note

+ dry cleaning is advised

+ due to the inherent imperfections in natural fibers, there may be a subtle variation in color tone and minor irregularities that are typical to linen and recycled materials

A cotton blend beauty, True Story is made from a mix of recycled cotton and a blend of other materials. True Story is thicker in structure with visible two-tone weave, it adds a feeling of comfort to any space it inhabits.

The recycled cotton used in this curtain is sourced from recycled textile waste. The material is process into fibres and woven in a new yarn. This technique helps move the textile industry to a closed-loop model.

True Story is custom made for you by skilled hands in Europe with a width of 290 cm.

This curtain is made of recycled fabric.



Textile waste gets collected



The textile is sorted by color



All textile gets recycled into new fiber



Fibers are made into new yarn



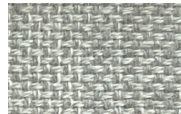
Yarn is made into new fabric



You contribute to a closed-loop end-to-end solution



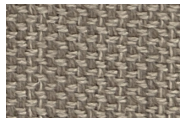
7601



7602



7603



7604

CARE INSTRUCTIONS

- Professional dry-cleaning of the curtain fabrics is advised. If you decide to wash the fabrics at home, please follow the instructions mentioned below.
- Before cleaning the curtains dust them. Either with the vacuum brush attachment on a low setting or shake them out.
- Cold wash the curtains at 30°C without spin or centrifuge cycle.
- Do not rub or wring fabric after washing.
- All fabrics can be ironed on low temperature and steam ironed.
- When in **doubt**, please don't hesitate to contact us, or take a look on our website, www.frankly.amsterdam/careinstructions, for more information.



Dry-cleaning is advised

WARRANTY

- Frankly Amsterdam **guarantees** its curtains for 2 years of normal use.
- All our products are made with care. In case a **manufacturing defect** escaped our attention, please inform us within 14 days after delivery and leave the product unused.
- Small differences or **irregularities** in color or size may occur. This is inherent to the use of these fibers, in particular linen, and has to be accepted when within normal commercial tolerances.
- Frankly Amsterdam will not accept any complaint if shading is concerned.

