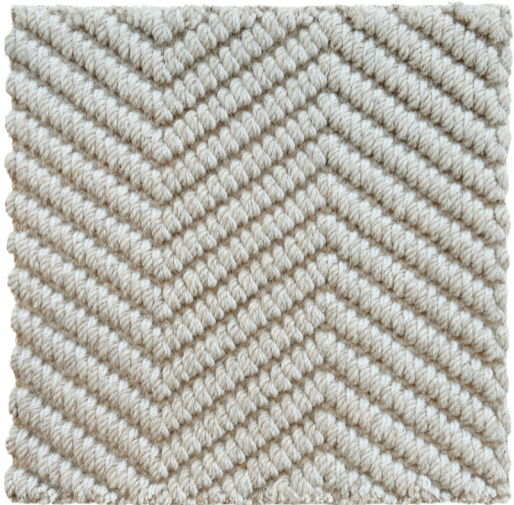


FRANKLY
AMSTERDAM





LINE UP

Manufacturing	Wilton woven
Pile surface	Loop pile
Material	100% Wool
Carpet weight	± 2.700 g/m ²
Carpet thickness	± 7 mm
Roll width	4 meters
Backing	Jute & cotton
Fire classification	Bfl-s1
Colors	4 standard
Delivery time	1-6 weeks
Advantages	+ available as rug and runner + suitable for heavy domestic use and soft contract + durable and hypoallergenic properties + natural backing with jute and cotton + custom shape possible

Line Up draws inspiration from the beauty of symmetry found in every day life. This design merges contemporary style with practical functionality for both residential and soft contract use.

Made in Europe, Line Up showcases a unique geometric pattern, woven using the Wilton technique. Constructed from 100% wool, this rug offers durability, hypoallergenic properties, and temperature moderation.

The artisan-made design showcases a perfect blend of softness and resilience, suitable as a custom-sized rug or runner. Available in four standard colors, to compliment any design scheme.



1701



1702



1703



1704

CARE INSTRUCTIONS

- We advise you to **vacuum** the carpet once or twice a week for domestic applications and light use areas. For commercial applications and heavier traffic use, daily vacuuming is advised to reduce the presence and buildup of loose dirt particles.
- Do not use a vacuumer with a rotating brush, this will damage the yarn.
- For flat weave carpets use only a suction vacuum to prevent distortion or pilling of the carpet surface. Do not use the brush or beater bar.
- Rugs made from natural materials are subject to some **pilling** during the first few months. This is a common characteristic of natural cut fibers and will disappear after 3 or 4 months of normal use.
- A dry environment can result in extra pilling of the yarn. A **humidity** between 50 - 70% will benefit the lifecycle of your rug.
- In order to avoid '**regular use marks**', we advise you to turn the rug every once in a while.
- **Wet stains** need to be removed immediately, before the yarn absorbs the fluid. Absorb the stain using a strong absorbing paper (like kitchen paper). Do not, in any case, rub the rug when wet. This can damage the fibers and the structure of the rug.
- **Light stains** can safely be treated with JAMES cleaning agents, which have been successfully tested on our products. Please follow the

instructions of the JAMES staindisc, also shown on our site. We can not guarantee safe use of cleaning agents by any other brand, since they have not been tested.

- Please do not use highly acidic cleaning agents to remove stains from your rug. This will cause discoloration of the yarn.
- In case of **heavy staining** or transferred dirt, we advise you to always have your rug drycleaned by a specialist in rug cleaning. Please state clearly that this rug needs to be cleaned without using water.
- When in **doubt**, please don't hesitate to contact us, or take a look on our website, www.frankly.amsterdam/careinstructions, for more information.

WARRANTY

- Frankly Amsterdam **guarantees** its rugs for 2 years of normal use.
- All our products are made with care. In case a **manufacturing defect** escaped our attention, please inform us within 14 days after delivery and leave the product unused.
- Small differences or **irregularities** in color, weight or size may occur. This is inherent to the use of natural fibers and has to be accepted when within normal commercial tolerances.
- Frankly Amsterdam will not accept any complaint if shading is concerned.

