

FRANKLY
AMSTERDAM





3301

AT EASE

| | |
|---------------------|--|
| Available as | Rug, wall-to-wall, runner |
| Design | Frankly Amsterdam |
| Size | Any size possible |
| Weight | 6000 gr/m ² |
| Height | 35 mm (standard) or custom height |
| Technique | Hand tufted |
| Colors | 10 Standard colors + 220 uni + any custom color |
| Color design | Christiane Müller |
| Material | 50% Eucalyptus 50% Wool |
| Fire classification | Eucalyptus Cfl-s1, Wool Bfl-s1 |
| Advantages | + any size and shape possible + possibility to create your own mix color out of 220 uni colors (see Eucalyptus box & Wool box) + custom colors can be lab-dyed on request (ask about the terms and possibilities) + suitable for residential as well as soft contract |

www.frankly.amsterdam | T + 31 (0) 20 737 0818

At Ease is one of those friends we would all like to have. Easy going, level-headed. Never asking too much attention, but always there when you need them. A bare necessity in all lives, and all interiors. A classic high pile with a playful, yet elegant twist.

In addition to the 10 colors in our standard collection, we can provide you with any desired mix of colors. We have 220 colors to choose from! The rugs are handmade to measure, in any shape, size, height or color you desire.



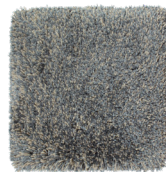
3302



3303



3304



3305



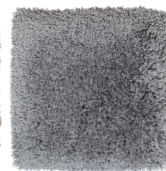
3306



3307



3308



3309



3310

CARE INSTRUCTIONS

- We advise you to **vacuum** the rug once or twice a week with a normal (upright or cylinder) vacuum cleaner but without the brush or beater bar engaged. Rugs with a high pile need to be vacuumed even more often.
- Do not use a vacuumer with a rotating brush, this will damage the yarn.
- Rugs made from natural materials are subject to some **pilling** during the first few months. This is a common characteristic of natural cut fibers and will disappear after 3 or 4 months of normal use.
- A dry environment can result in extra pilling of the yarn. A **humidity** between 50-70% will benefit the lifecycle of your rug.
- In order to avoid '**regular use marks**', we advise you to turn the rug every once in a while.
- **Wet stains** need to be removed immediately, before the yarn absorbs the fluid. Absorb the stain using a strong absorbing paper (like kitchen paper). Do not, in any case, rub the rug when wet. This can damage the fibers and the structure of the rug.
- **Light stains** can safely be treated with JAMES cleaning agents, which have been successfully tested on our products. Please follow the instructions of the JAMES staindisc delivered with the James starter kit. Treating stains within 24 hours increases the possibility of successful stain removal, nevertheless, complete removal can never be

guaranteed. The usage of a cleaning agent that is not tested on our products cannot be guaranteed for safe cleaning.

- Please do not use highly acidic cleaning agents to remove stains from your rug. This will cause discoloration of the yarn.
- In case of **heavy staining** or transferred dirt, we advise you to always have your rug dry cleaned by a specialist in rug cleaning. Please state clearly that this rug needs to be cleaned without using water.
- When in **doubt**, please don't hesitate to contact us, or take a look at www.frankly.amsterdam/careinstructions for more information.

WARRANTY

- Frankly Amsterdam **guarantees** its rugs for 2 years of normal use.
- All our products are made with care. In case a **manufacturing defect** escaped our attention, please inform us within 14 days after delivery and leave the product unused.
- Small differences or **irregularities** in color, weft or size may occur. This is inherent to the use of natural fibers and has to be accepted when within normal commercial tolerances.
- Frankly Amsterdam will not accept any complaint if shading is concerned.

